

V&V Reference Report

L2 ASCDS Version : 10.2.2

Observation 16286 - L2 Version 2
Chandra X-Ray Center

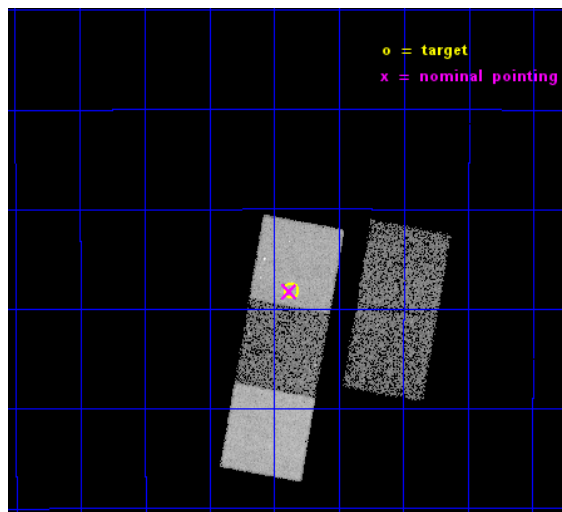
L2 Processing Date : Dec 11 2014

Contents

1	Front	2
2	OBI	3
2.1	OBI	3
2.1.1	Images	3
2.1.2	Bias	3
2.1.3	Parameters	4
2.1.4	Events	4
2.2	Compared Parameters	5
2.3	Aspect	6
2.4	Star Slots	9
2.4.1	Slot 3	9
2.4.2	Slot 4	10
2.4.3	Slot 5	11
2.4.4	Slot 6	12
2.4.5	Slot 7	13
2.5	FID Slots	14
2.5.1	Slot 0	14
2.5.2	Slot 1	15
2.5.3	Slot 2	16
A	Summary	17
A.1	Status	17
A.2	Comments	17

1 Front

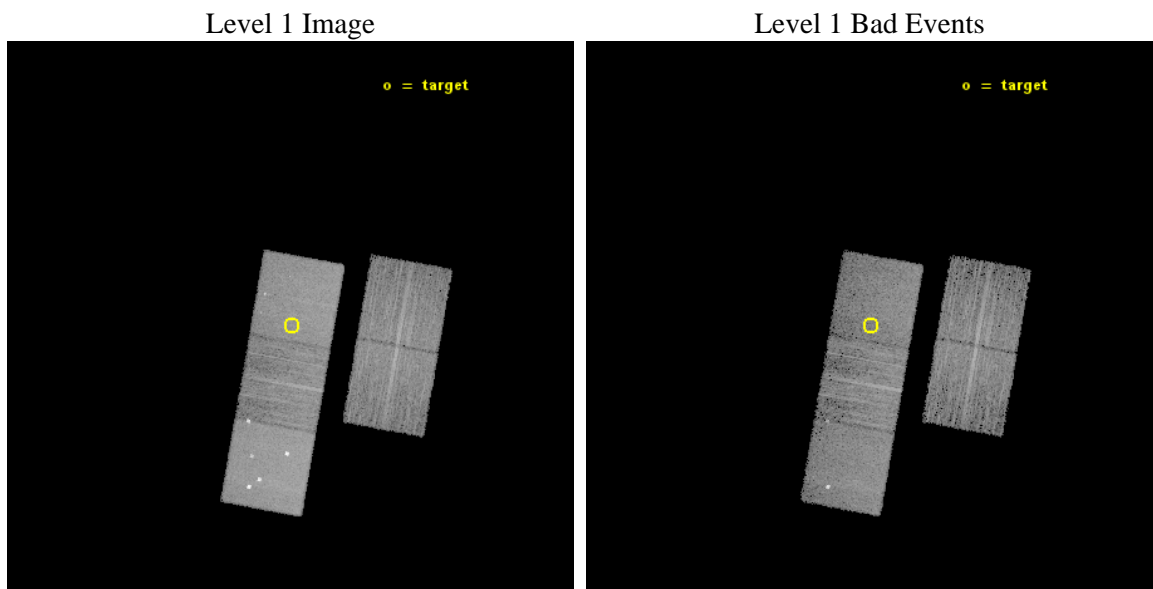
seq_num	901117	Sequence number
obs_id	16286	Observation id
title	Exploring low stellar mass galaxies in large dark matter halos	Pro
observer	Dr. Stephen Murray	Principal investigator
object	ESO512-009	Source name
dtcycle	0	
cycle	P	events from which exps? Prim/Second/Both
ra_targ	219.8425	Observer's specified target RA [deg]
dec_targ	-25.470028	Observer's specified target Dec [deg]
ra_nom	219.84561166821	Nominal RA [deg]
dec_nom	-25.471156948489	Nominal Dec [deg]
roll_nom	280.1579514405	Nominal Roll [deg]
revision	2	Processing version of data
ontime	13071.589162827	Sum of GTIs [s]
livetime	12900.79922725	Livetime [s]
ontime2	13071.425002813	Sum of GTIs [s]
ontime3	13071.466042817	Sum of GTIs [s]
ontime5	13071.548122823	Sum of GTIs [s]
ontime6	13071.50708282	Sum of GTIs [s]
ontime7	13071.589162827	Sum of GTIs [s]
l2events	100835	Number of level 2 events



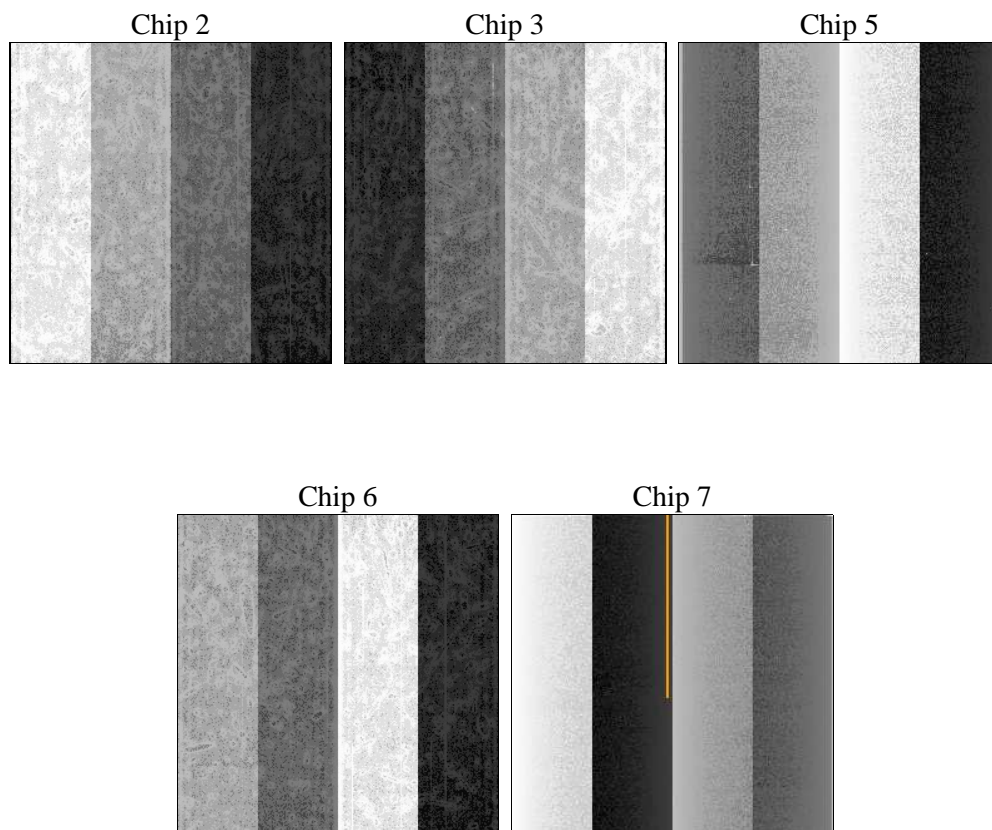
2 OBI

2.1 OBI

2.1.1 Images



2.1.2 Bias



2.1.3 Parameters

obi_num	0	Obi number	sched_exp_time	13000.000000	[s] Scheduled observation exposure time
ascdsver	10.3.1	Processing system revision	ontime	13071.589162827	Sum of GTIs [s]
caldsver	4.6.4	 	ontime2	13071.425002813	Sum of GTIs [s]
date	2014-12-12T01:37:53	Date and time of file creation	ontime3	13071.466042817	Sum of GTIs [s]
revision	2	Processing version of data	ontime5	13071.548122823	Sum of GTIs [s]
			ontime6	13071.50708282	Sum of GTIs [s]
			ontime7	13071.589162827	Sum of GTIs [s]
			l1events	374497	Number of level 1 events

2.1.4 Events

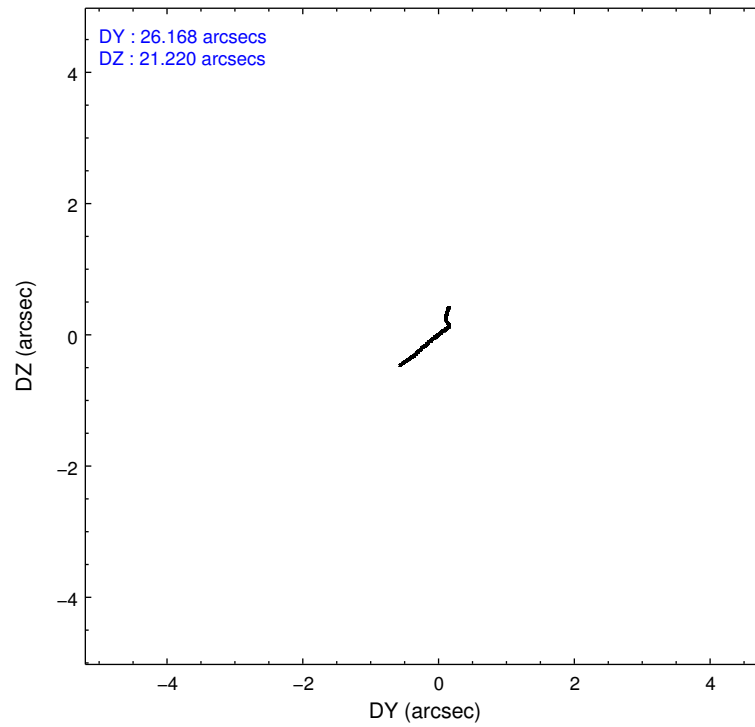
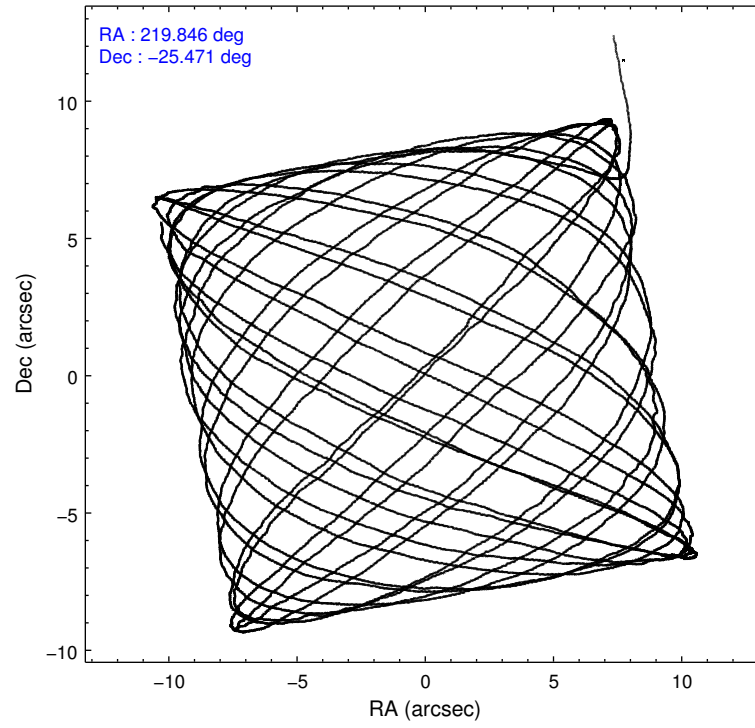
	ccd 2	ccd 3	ccd 5	ccd 6	ccd 7
level 1 events	58424	56372	113086	61952	84663
rejected events	51585	49646	55319	54320	47432
rejected %	88%	88%	48%	87%	56%

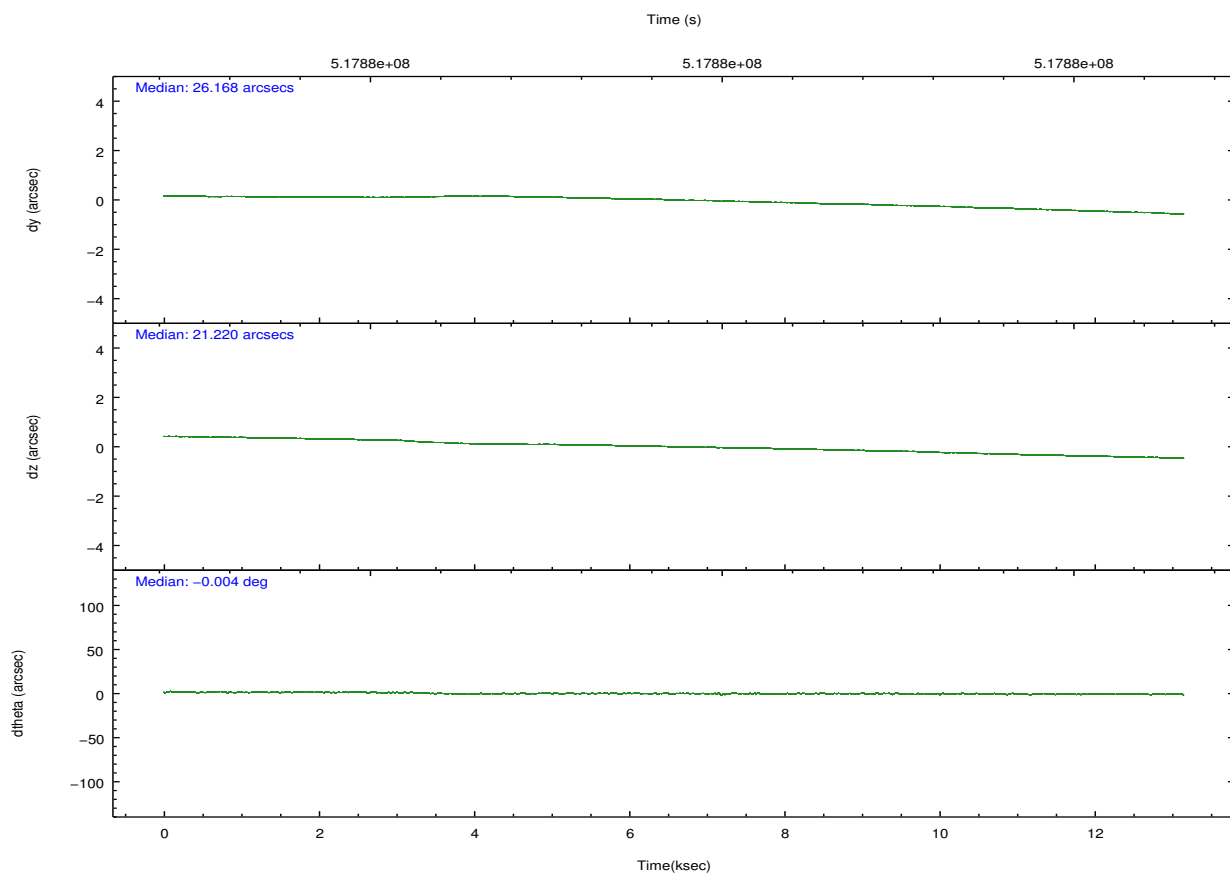
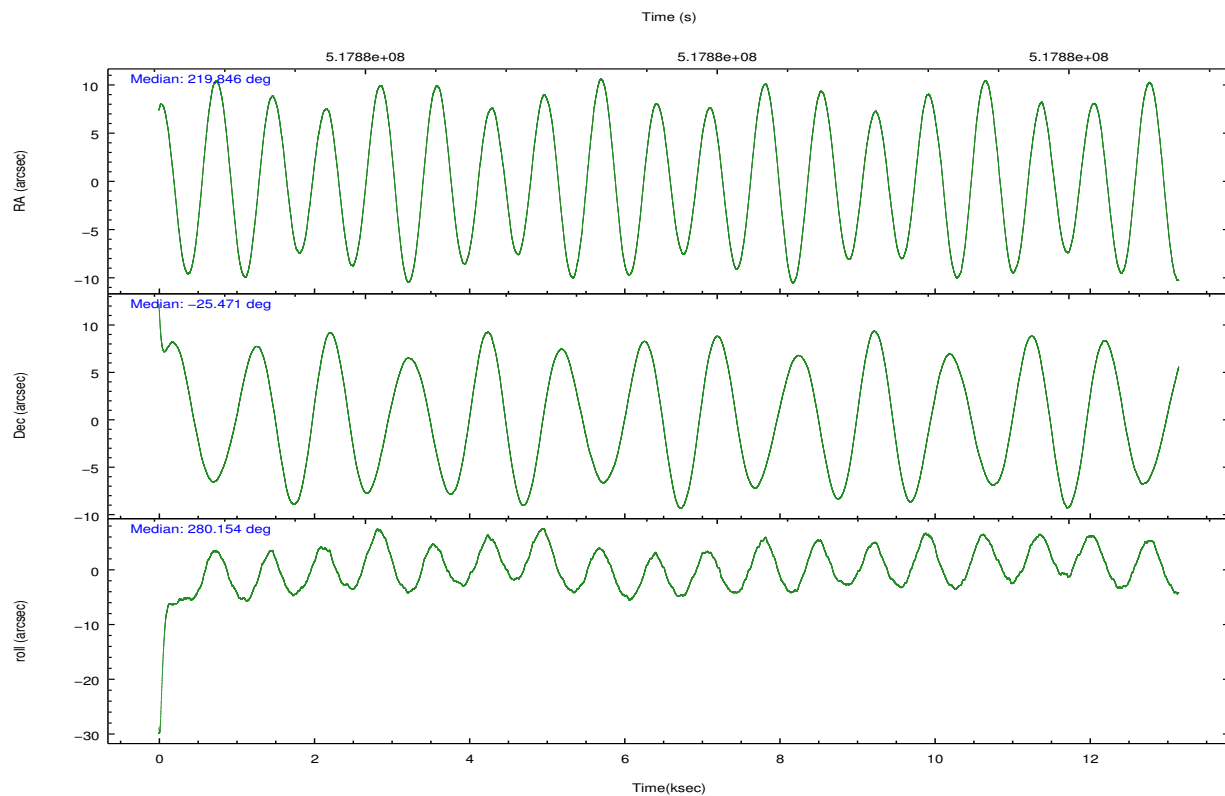
	ccd 2	ccd 3	ccd 5	ccd 6	ccd 7
grade 0 events	2437	2328	11035	2708	3321
	4%	4%	9%	4%	3%
grade 1 events	26	24	312	37	97
	0%	0%	0%	0%	0%
grade 2 events	1704	1512	16737	1648	7643
	2%	2%	14%	2%	9%
grade 3 events	676	750	1771	797	3182
	1%	1%	1%	1%	3%
grade 4 events	731	709	1601	742	3193
	1%	1%	1%	1%	3%
grade 5 events	2689	3253	8084	3253	8612
	4%	5%	7%	5%	10%
grade 6 events	1293	1427	26641	1738	19906
	2%	2%	23%	2%	23%
grade 7 events	48868	46369	46905	51029	38709
	83%	82%	41%	82%	45%

2.2 Compared Parameters

Parameter	Planned	Actual	Parameter	Planned	Actual
Instrument	ACIS	ACIS	Obspar format version number	7	7
Detector	ACIS-23567	ACIS-23567	Obspar file type	PREDICTED	ACTUAL
Grating	NONE	NONE	Obspar update status	NONE	UPDATED
Data mode	VFAINT	VFAINT	Number of optional ACIS chips dropped	0	0
Observation mode	POINTING	POINTING	On-chip summing requested	N	N
[deg] Pointing RA	219.825765	219.8456116682077	Subarray requested	NONE	NONE
[deg] Pointing Dec	-25.450524	-25.47115694848873	Alternating exposures requested	N	N
[deg] Pointing Roll	279.992811	280.1579514405038	[s] Primary exposure time	0.000000	3.1
[mm] SIM focus pos	-0.684267	-0.6828225247311905			
[mm] SIM defocus	0	0.001444936568705701			
[mm] SIM translation stage pos	-190.132523	-190.1425803651734			
[mm] SIM translation stage offset	0	0.01005778216563158			
[s] Observation start time (MET)	517872876.184000	517871603.83255			
Observation start date	2014-05-30T21:33:29	2014-05-30T21:13:23			
[s] Observation end time (MET)	517885876.184000	517886824.57089			
Observation end date	2014-05-31T01:10:09	2014-05-31T01:27:04			
Read mode	TIMED	TIMED			

2.3 Aspect



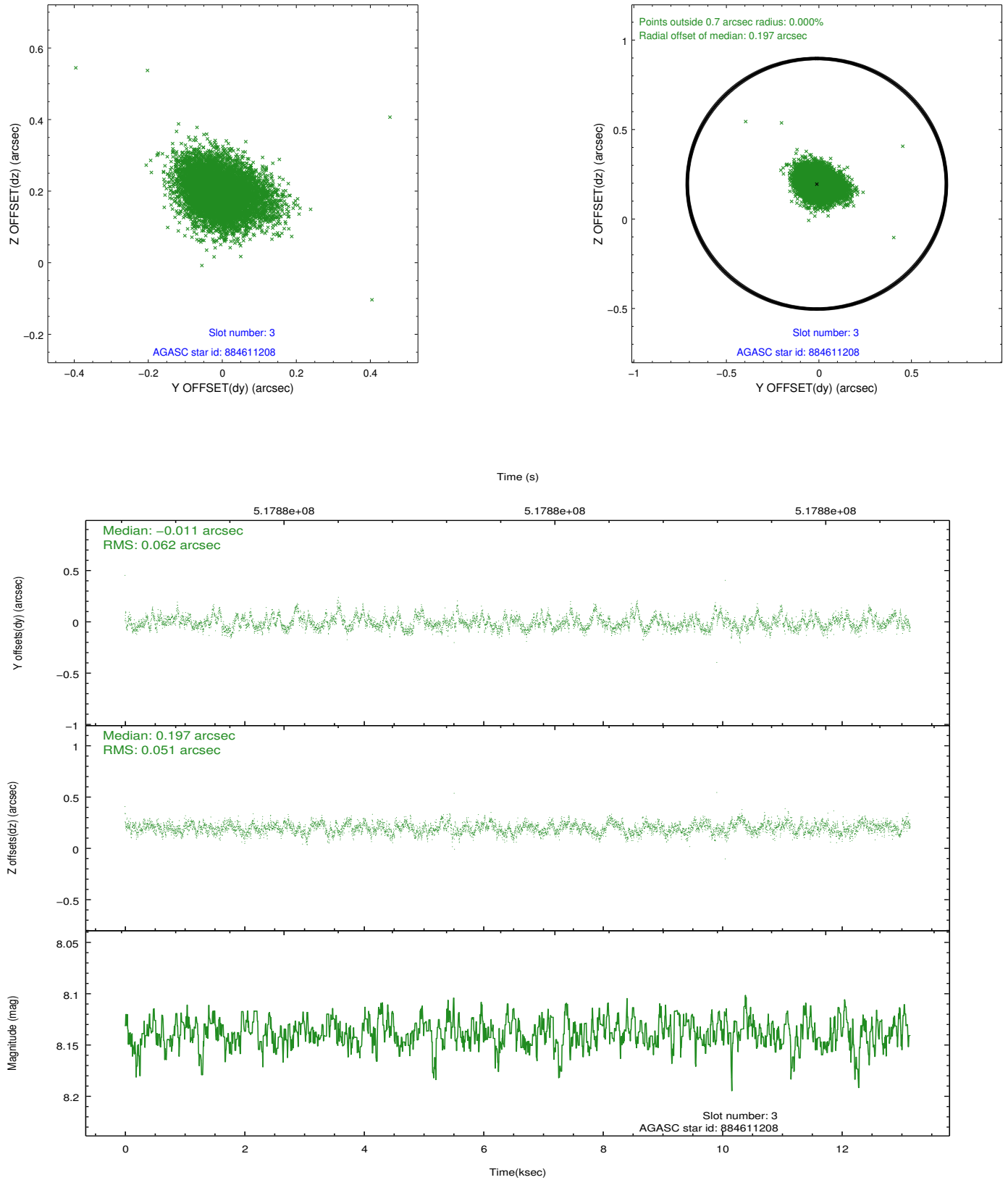


Slot Statistics

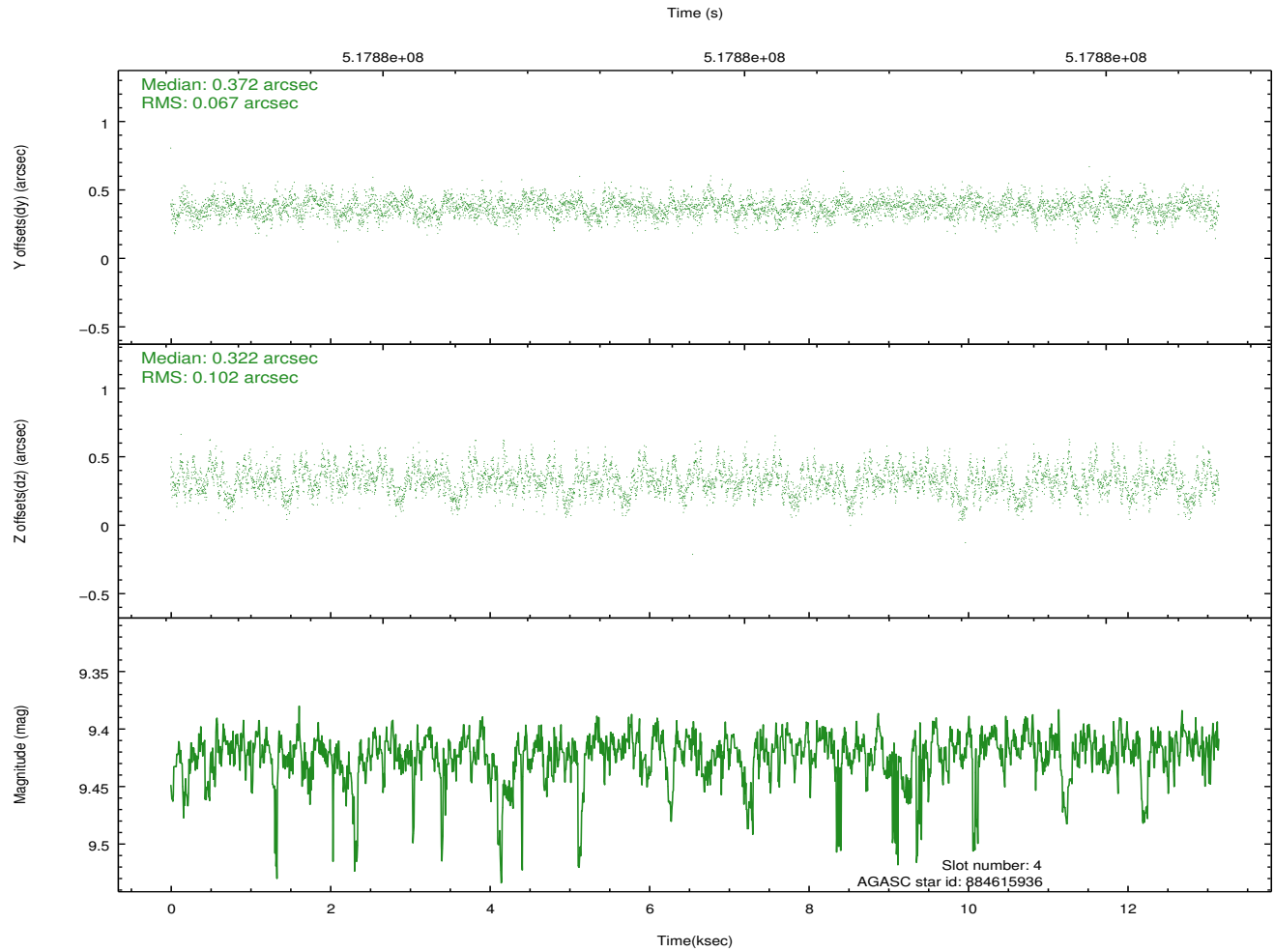
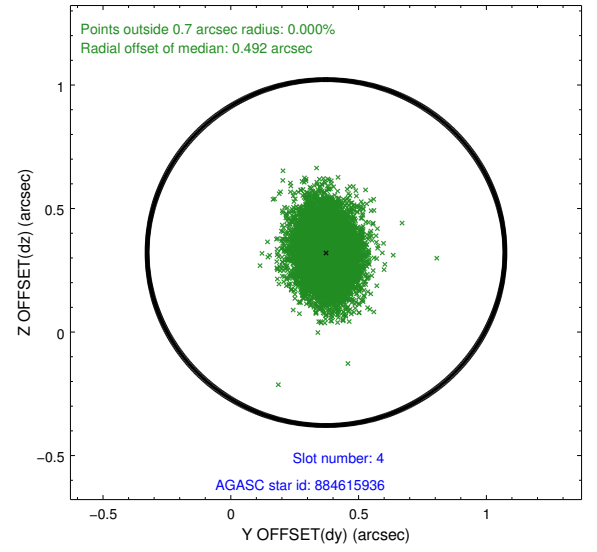
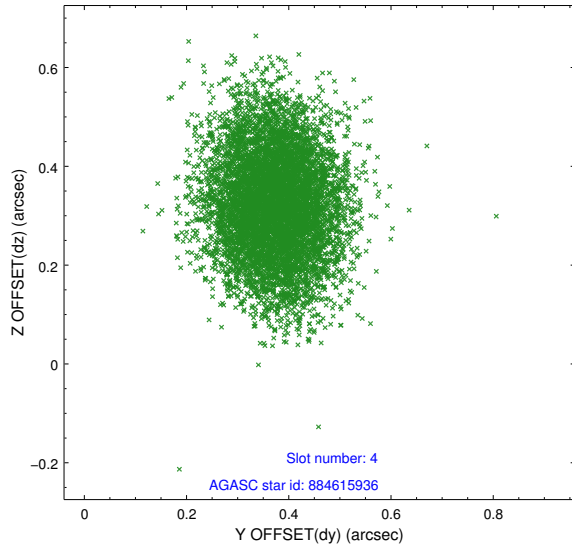
slot	status	used	id	mag	n_pts	med_dy	med_dz	dr1	dr2	ra	dec	mean_y	mean_z
0	FID		ACIS-S-2	6.96	3206	-0.183	-0.010	0.014	0.021	0.000000	0.000000	-779.54	-1742.72
1	FID		ACIS-S-4	7.05	3207	0.354	0.091	0.007	0.013	0.000000	0.000000	2134.10	165.48
2	FID		ACIS-S-5	7.08	3207	-0.202	-0.072	0.013	0.020	0.000000	0.000000	-1831.94	159.40
3	GUIDE	used	884611208	8.14	6412	-0.011	0.197	0.083	0.138	219.270364	-25.802567	941.93	-1993.47
4	GUIDE	used	884615936	9.42	6408	0.372	0.322	0.130	0.211	219.673615	-25.304215	-603.44	-396.08
5	GUIDE	used	884738056	8.41	6412	-0.213	-0.360	0.076	0.120	220.445710	-25.848537	1764.52	1728.41
6	GUIDE	used	884736328	8.72	6410	-0.258	-0.236	0.097	0.148	220.617292	-25.740493	1481.31	2345.76
7	GUIDE	used	884746648	9.77	6407	0.104	0.082	0.192	0.301	219.800864	-25.072008	-1355.32	156.80

2.4 Star Slots

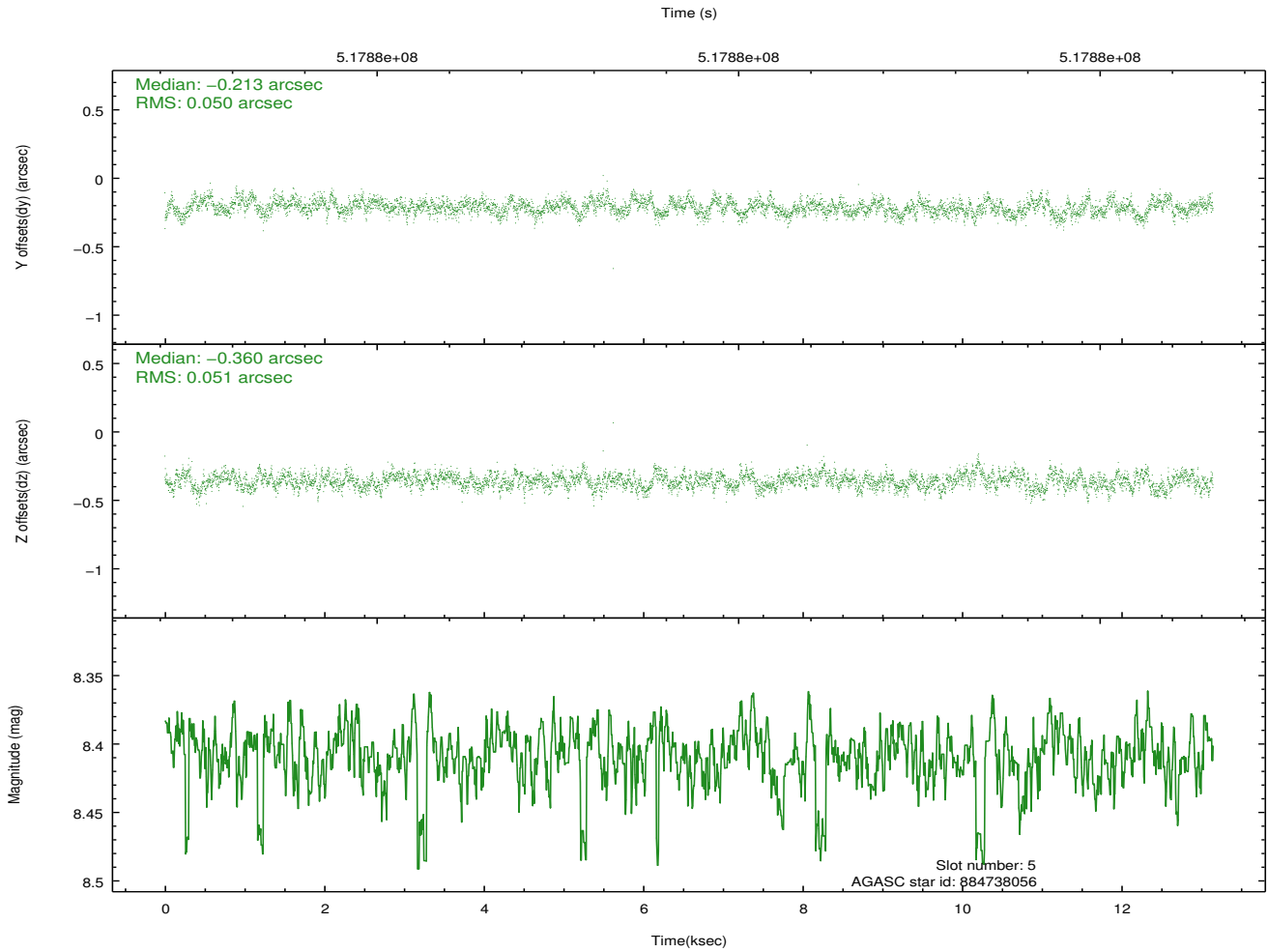
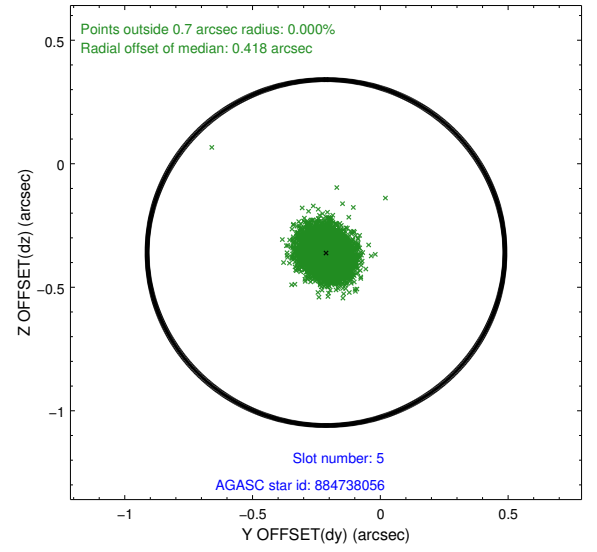
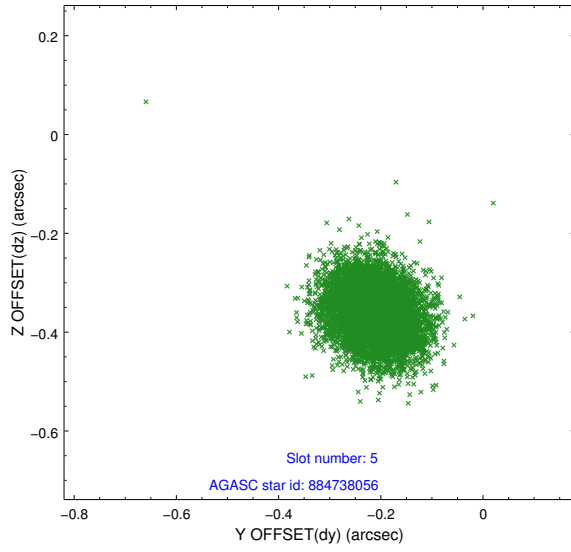
2.4.1 Slot 3



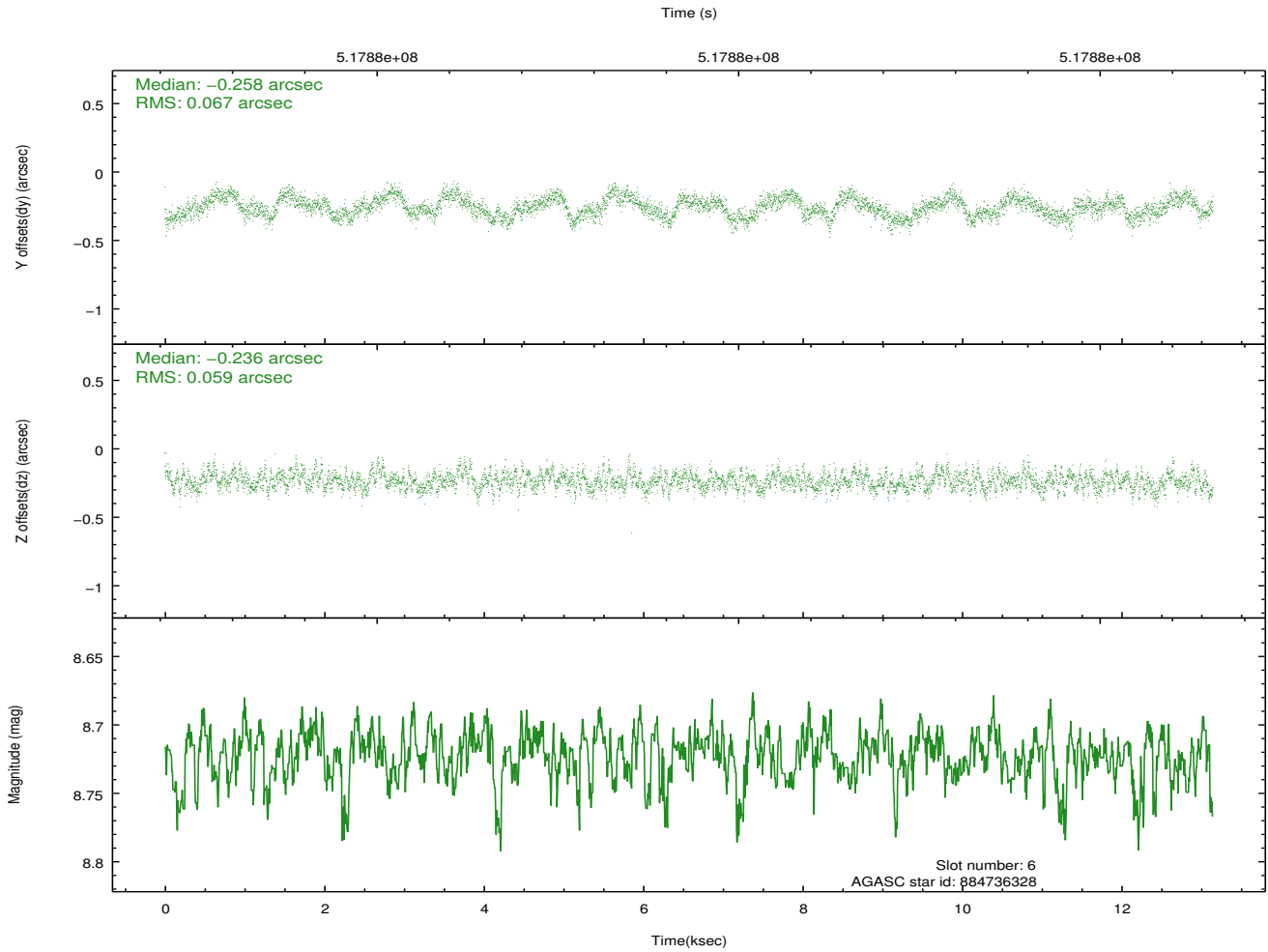
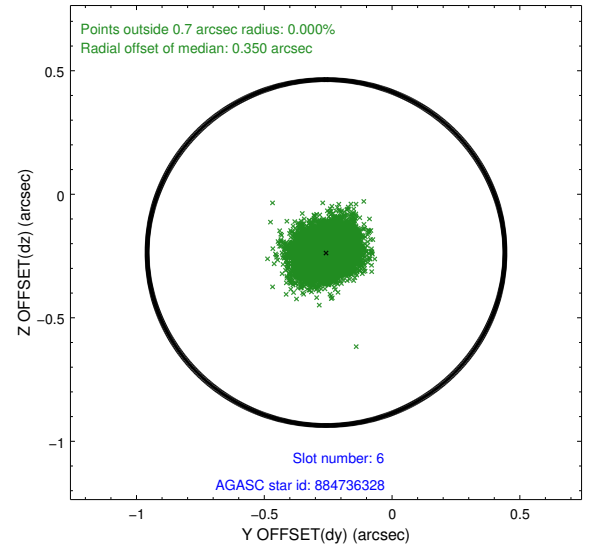
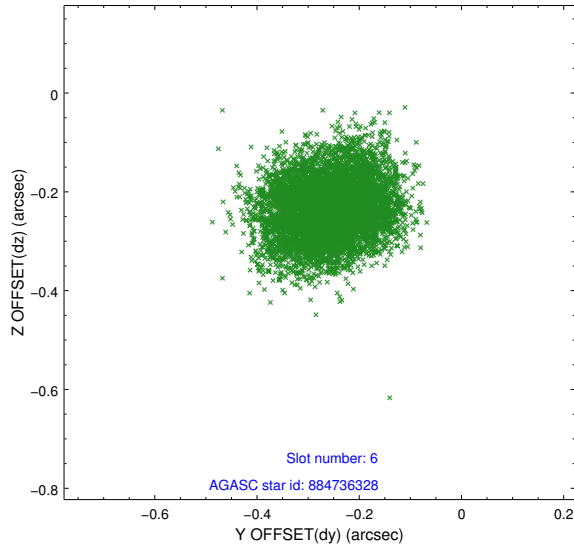
2.4.2 Slot 4



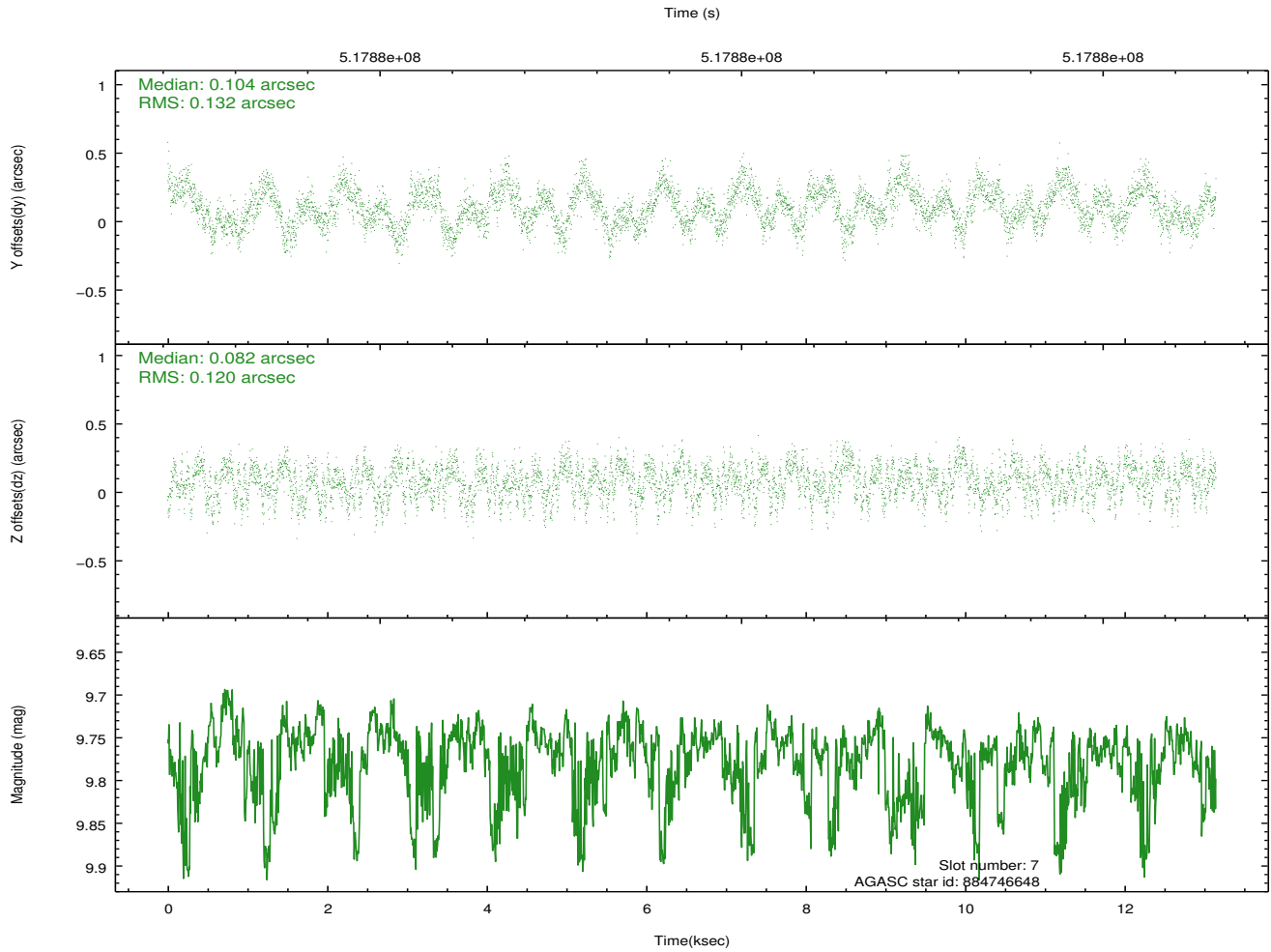
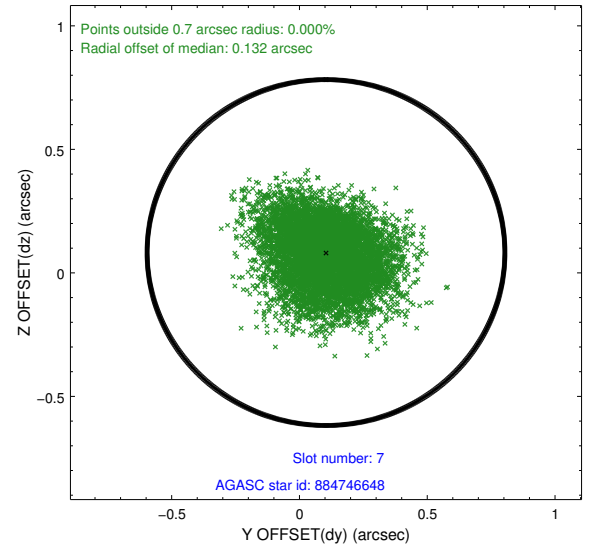
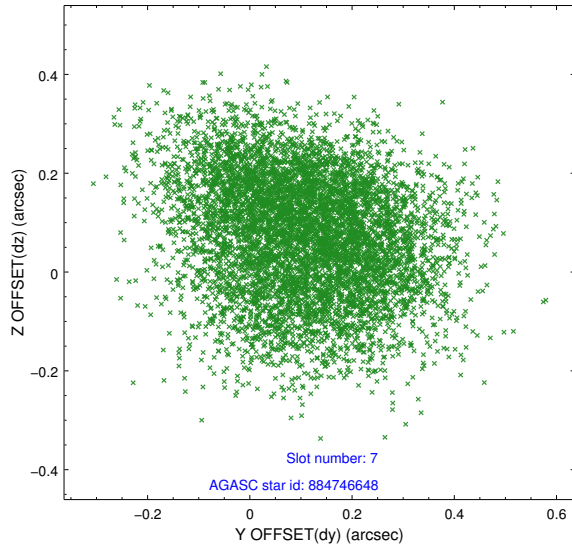
2.4.3 Slot 5



2.4.4 Slot 6

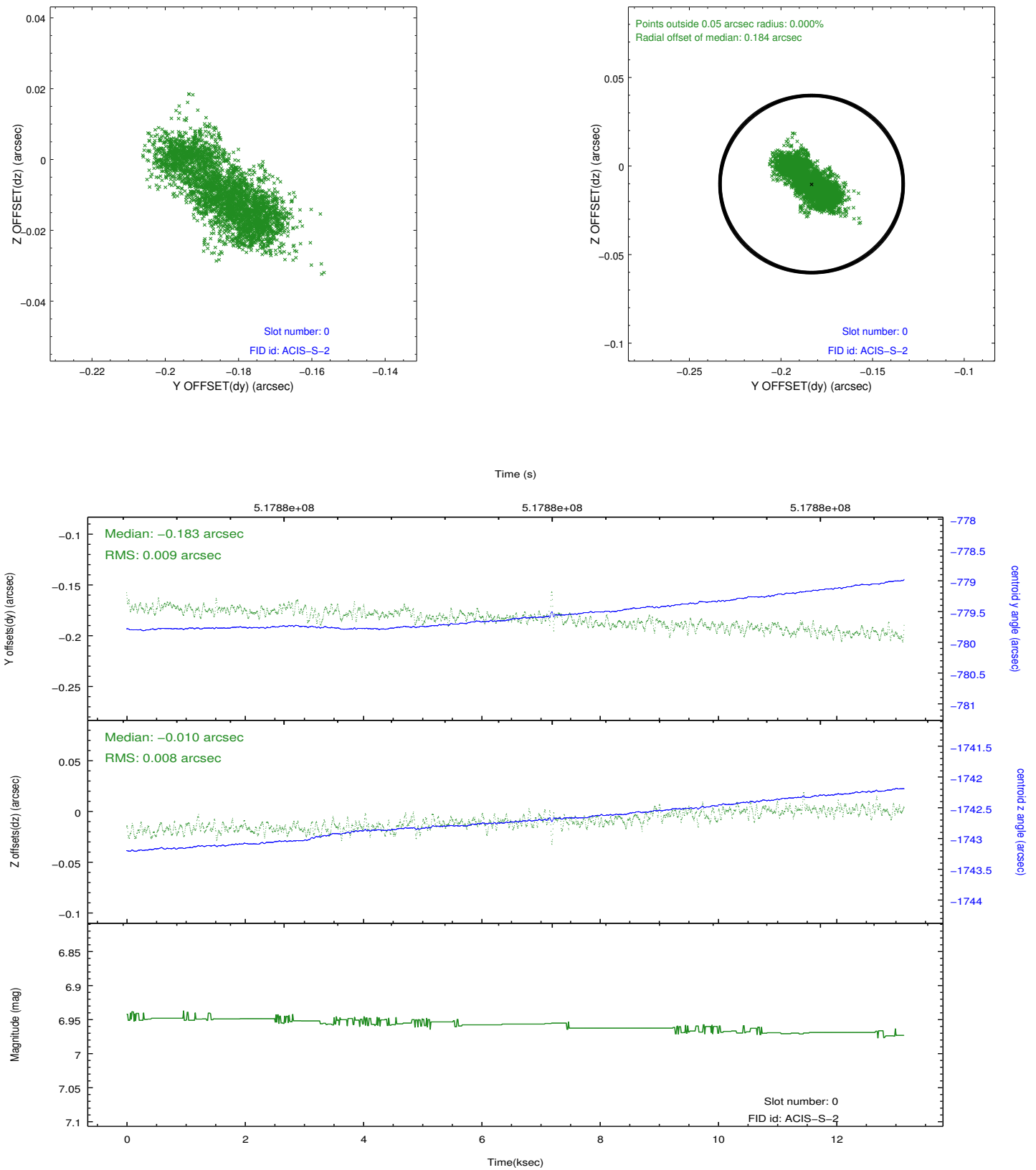


2.4.5 Slot 7

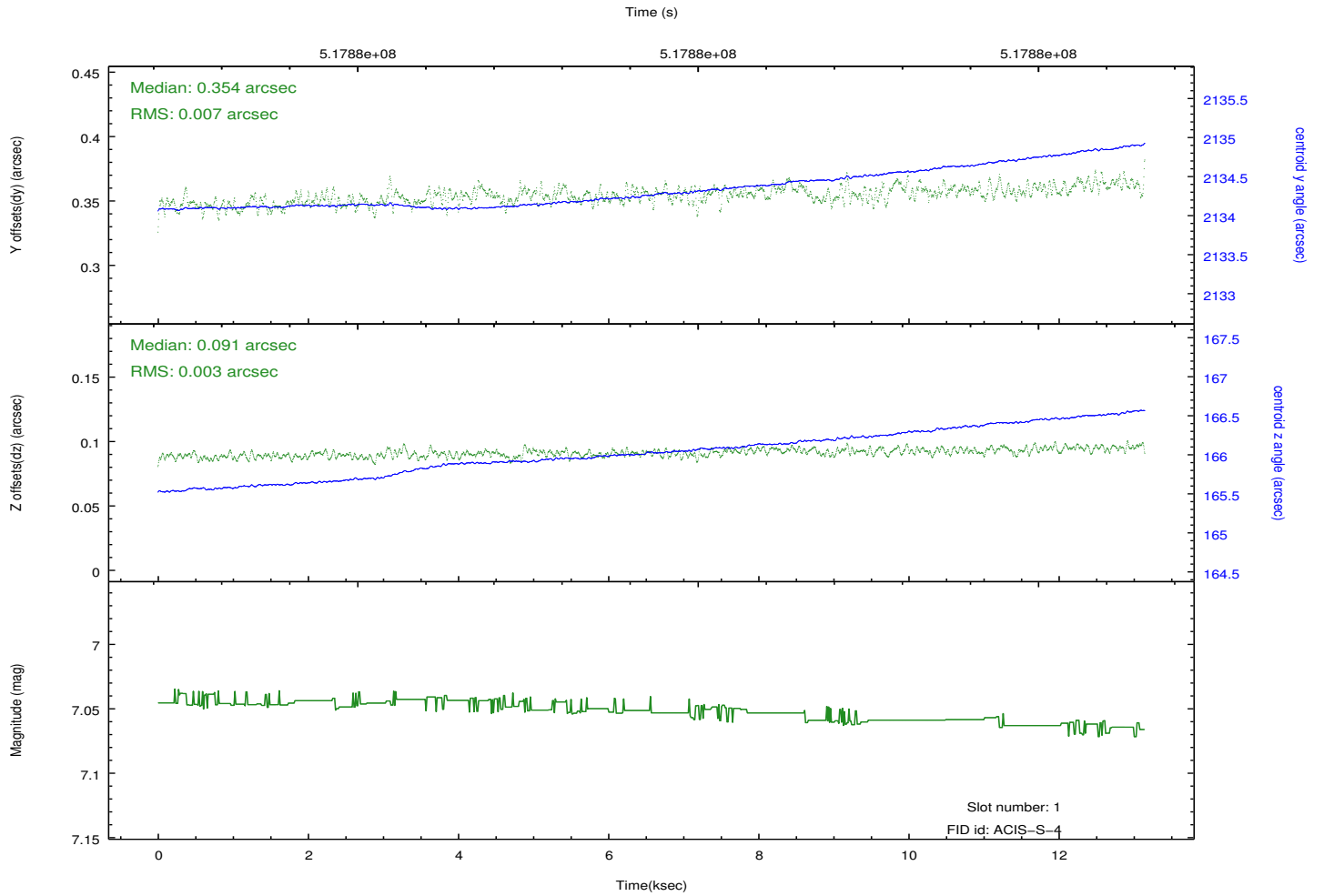
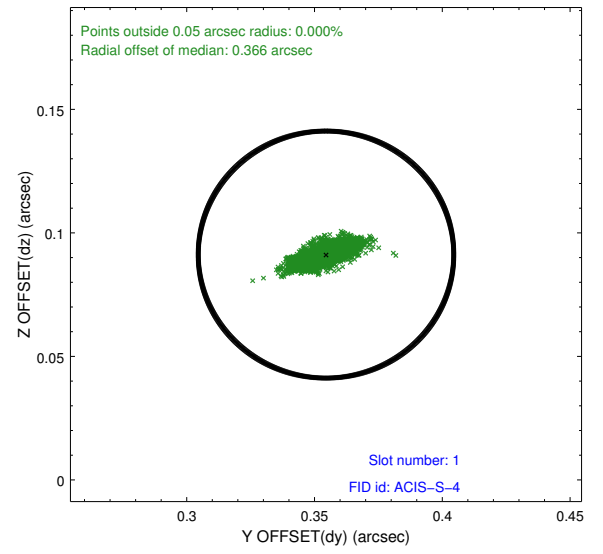
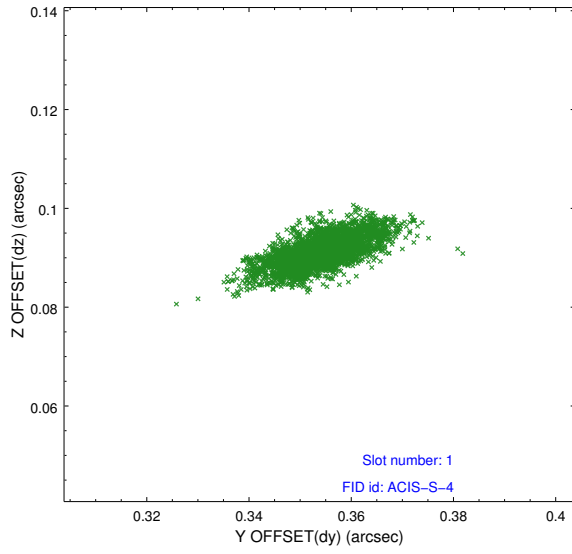


2.5 FID Slots

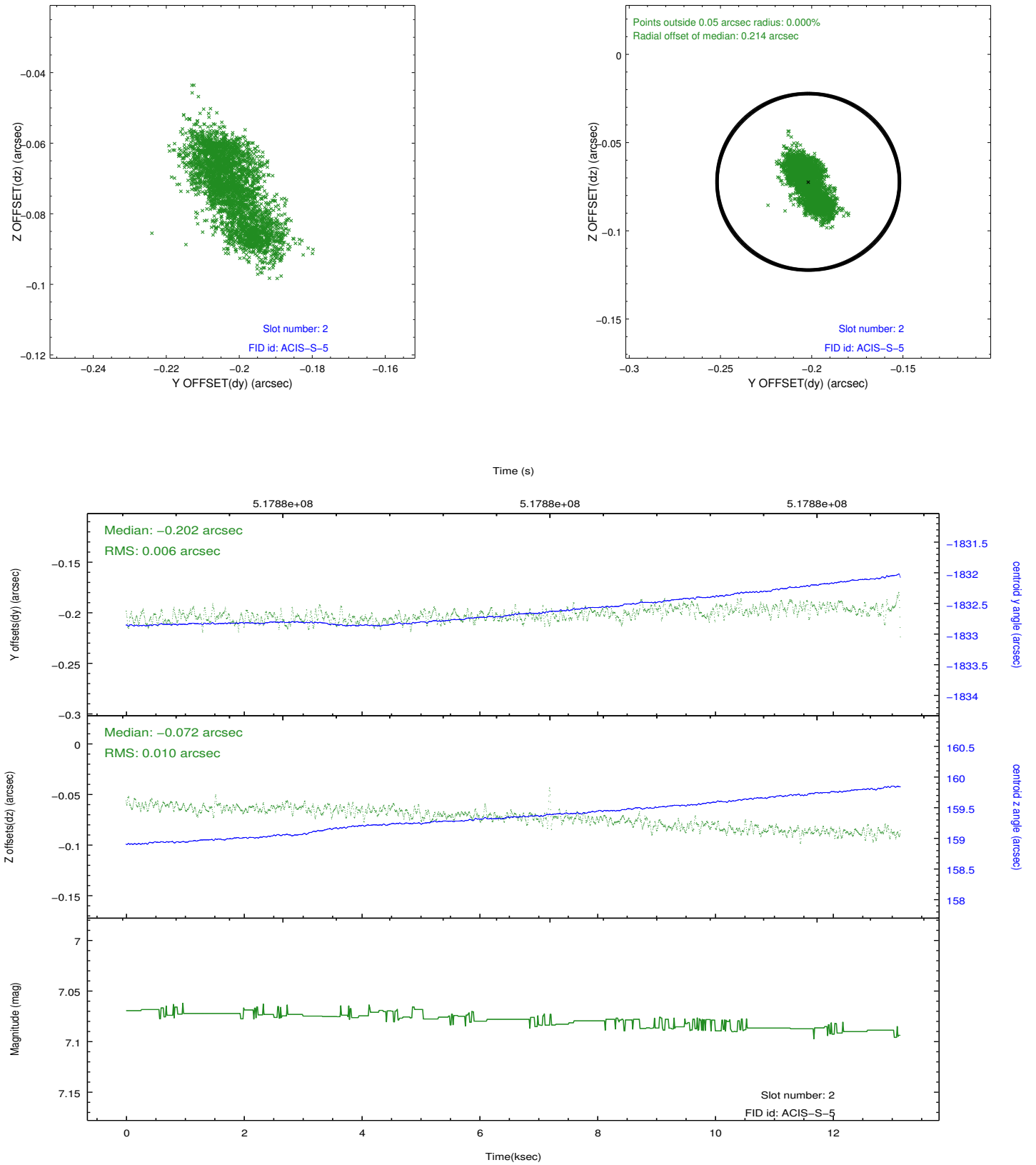
2.5.1 Slot 0



2.5.2 Slot 1



2.5.3 Slot 2



A Summary

A.1 Status

V&V Scientist	Beth Sundheim
V&V Date (YYYY-MM-DD)	2014.12.19
V&V Edition	1
V&V Disposition and Status	OK
V&V Charge Time	13.071589162827

A.2 Comments

These data have been reprocessed with new aspect alignment calibration files that correct small mean offsets (up to 0.4 arcsecs) and improve overall astrometric accuracy. The new calibration was determined using data from the time period being reprocessed and was performed using cross-correlation of X-ray sources with radio and optical counterparts.