

# V&V Reference Report

## L2 ASCDS Version : 7.6.9

Observation 1626 - L2 Version 001  
Chandra X-Ray Center

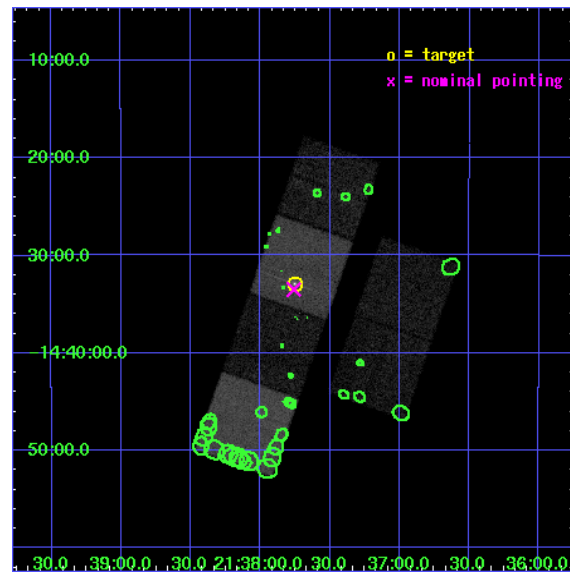
L2 Processing Date : Jan 5 2007

## Contents

<b>1</b>	<b>Front</b>	<b>2</b>
<b>2</b>	<b>OBI</b>	<b>3</b>
2.1	OBI . . . . .	3
2.1.1	Images . . . . .	3
2.1.2	Bias . . . . .	3
2.1.3	Parameters . . . . .	4
2.1.4	Events . . . . .	4
2.2	Compared Parameters . . . . .	5
2.3	Aspect . . . . .	6
2.4	Star Slots . . . . .	9
2.4.1	Slot 3 . . . . .	9
2.4.2	Slot 4 . . . . .	10
2.4.3	Slot 5 . . . . .	11
2.4.4	Slot 6 . . . . .	12
2.4.5	Slot 7 . . . . .	13
2.5	FID Slots . . . . .	14
2.5.1	Slot 0 . . . . .	14
2.5.2	Slot 1 . . . . .	15
2.5.3	Slot 2 . . . . .	16
<b>3</b>	<b>Point Sources</b>	<b>17</b>
<b>A</b>	<b>Summary</b>	<b>18</b>
A.1	Status . . . . .	18
A.2	Comments . . . . .	18

# 1 Front

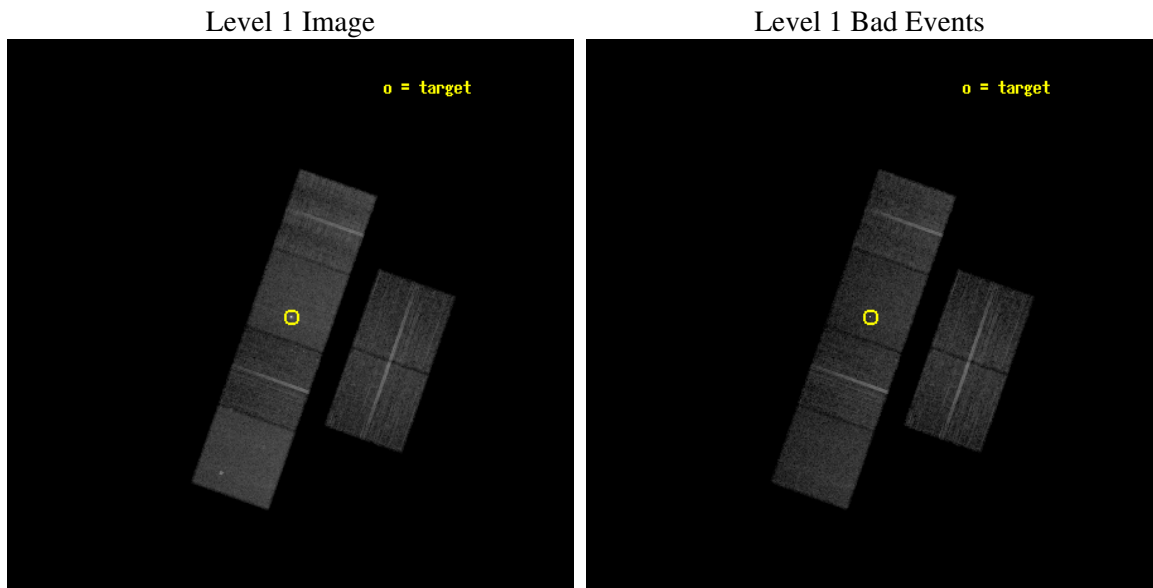
seq_num	700242
obs_id	1626
title	STUDIES OF RADIO JETS AND THE NARROW LINE REGIONS OF ACTIVE GALAXIES
observer	Prof. Andrew Wilson
object	PKS 2135-14
dtcycle	0
cycle	P
ra_targ	324.438333
dec_targ	-14.548722
ra_nom	324.43992411251
dec_nom	-14.558357689945
roll_nom	289.34583875691
revision	2
ontime	15126.400014088
livetime	14934.860429085
ontime2	15126.400014088
ontime3	15126.400014088
ontime5	15126.400014088
ontime6	15126.400014088
ontime7	15126.400014088
ontime8	15126.400014088
l2events	147442



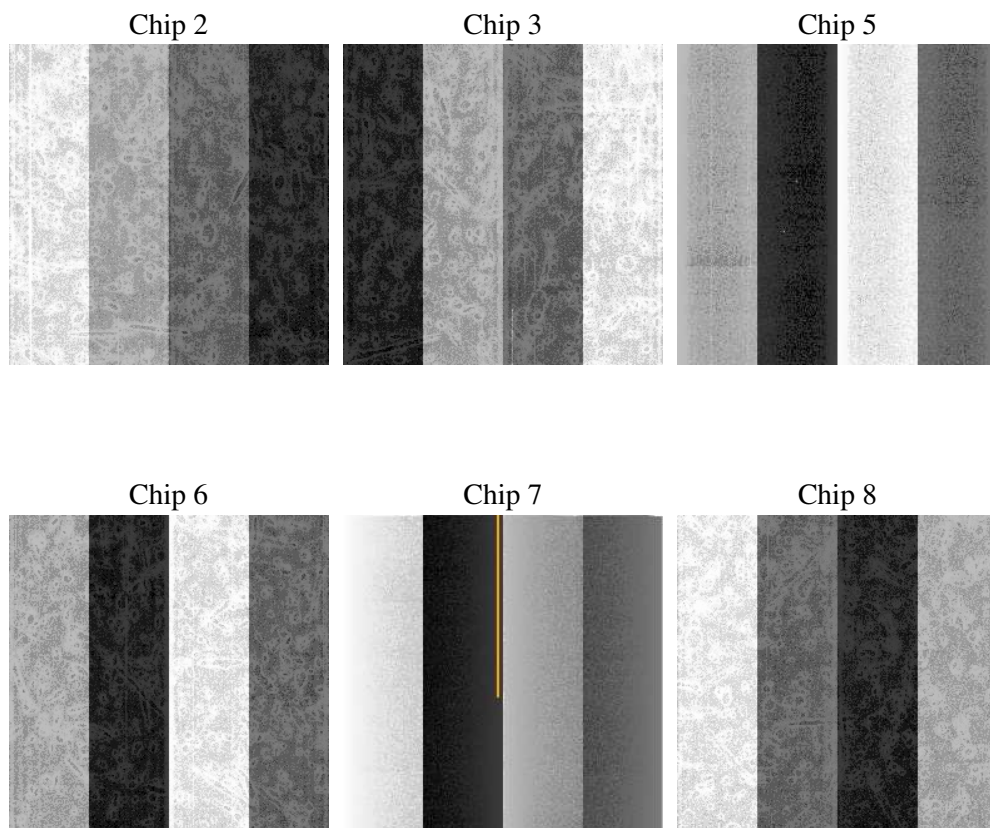
## 2 OBI

### 2.1 OBI

#### 2.1.1 Images



#### 2.1.2 Bias



### 2.1.3 Parameters

obi_num	1
ascdsver	7.6.9
caldbver	3.2.4
date	2007-01-05T13:35:47
revision	2

sched_exp_time	15000.000000
ontime	15128.990430295
ontime2	15128.990410388
ontime3	15128.990410388
ontime5	15128.990430295
ontime6	15128.990410388
ontime7	15128.990430295
ontime8	15128.990410388
l1events	667640

### 2.1.4 Events

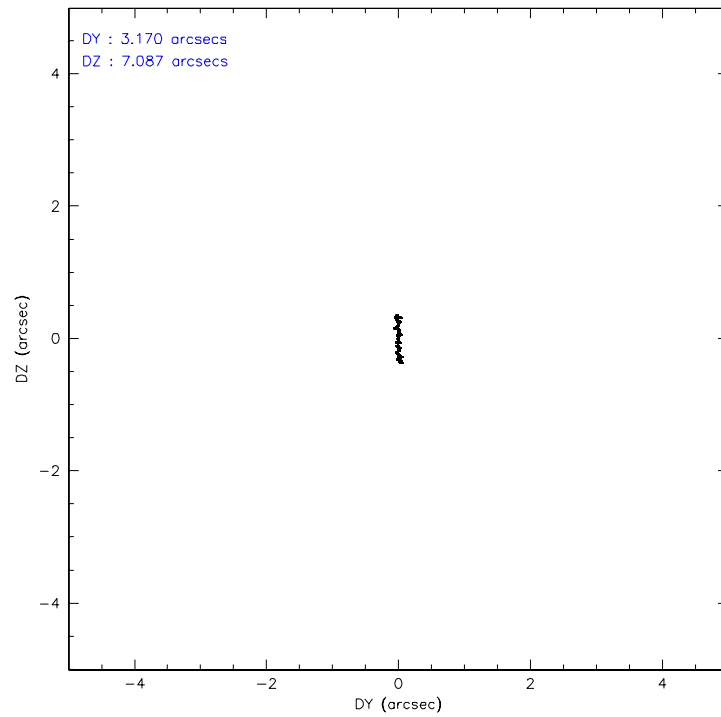
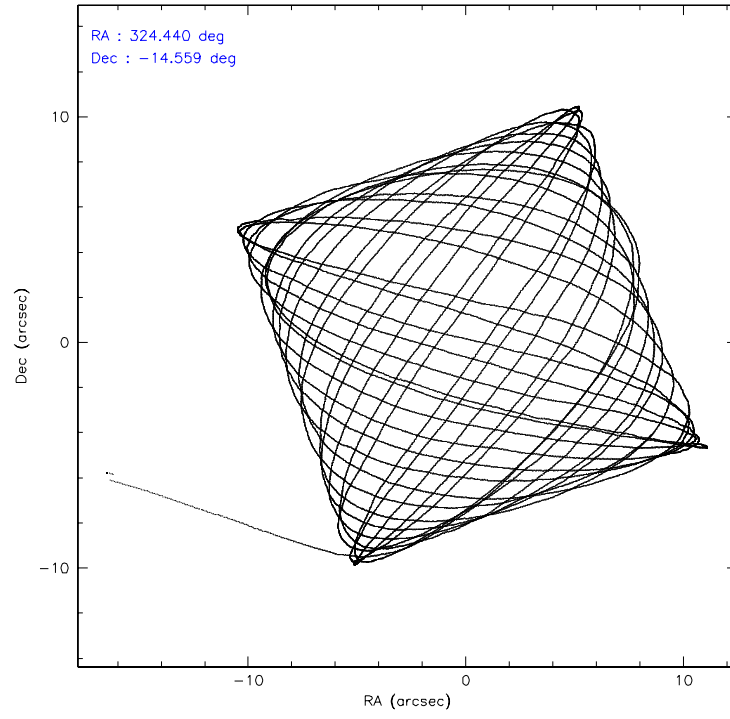
	ccd 2	ccd 3	ccd 5	ccd 6	ccd 7	ccd 8
level 1 events	96569	92640	130055	94207	128938	125231
rejected events	85190	81491	73126	82180	77769	93466
rejected %	88%	87%	56%	87%	60%	74%

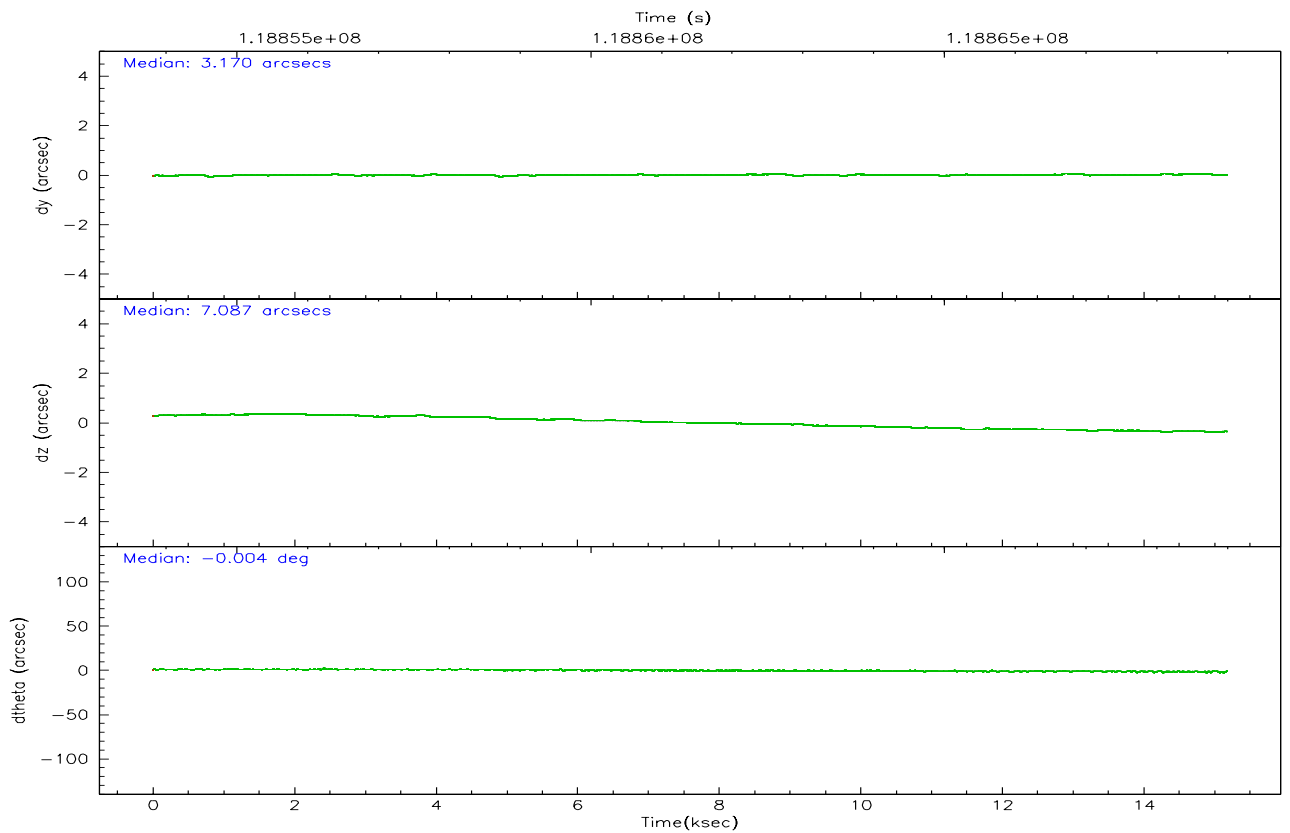
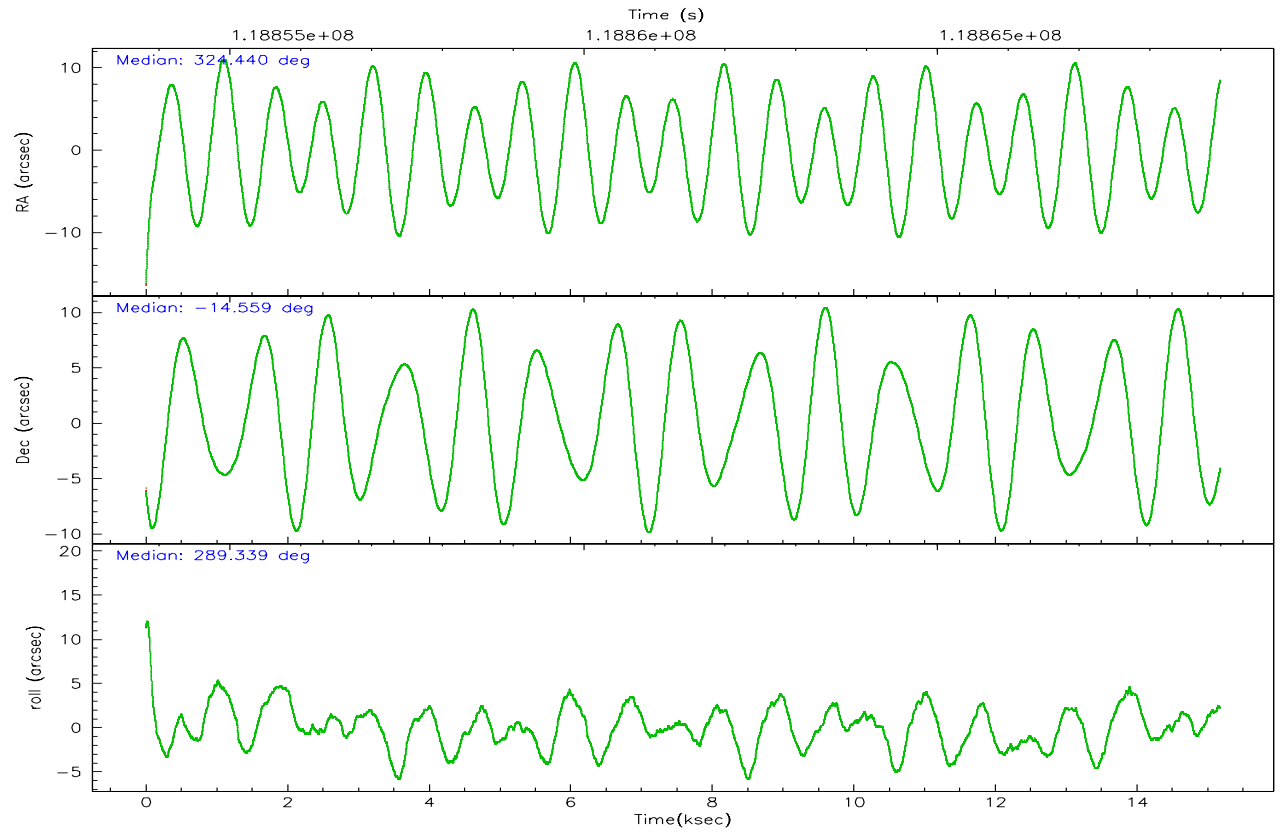
	ccd 2	ccd 3	ccd 5	ccd 6	ccd 7	ccd 8
grade 0 events	4754	4690	3202	5027	4102	10184
	4%	5%	2%	5%	3%	8%
grade 1 events	53	47	135	49	141	95
	0%	0%	0%	0%	0%	0%
grade 2 events	2638	2418	17920	2553	12500	6251
	2%	2%	13%	2%	9%	4%
grade 3 events	1024	1029	1447	1077	2908	3887
	1%	1%	1%	1%	2%	3%
grade 4 events	1020	998	1352	1094	2778	3551
	1%	1%	1%	1%	2%	2%
grade 5 events	3170	3697	6303	3860	8365	5108
	3%	3%	4%	4%	6%	4%
grade 6 events	1949	2018	33021	2277	28888	7892
	2%	2%	25%	2%	22%	6%
grade 7 events	81961	77743	66675	78270	69256	88263
	84%	83%	51%	83%	53%	70%

## 2.2 Compared Parameters

Parameter	Planned	Actual	Parameter	Planned	Actual
Instrument	ACIS	ACIS	Obspar format version number	6	6
Detector	ACIS-235678	ACIS-235678	Obspar file type	PREDICTED	ACTUAL
Grating	NONE	NONE	Obspar update status	NONE	UPDATED
Data mode	VFAINT	VFAINT	Number of optional ACIS chips dropped	0	0
Observation mode	POINTING	POINTING	On-chip summing requested	N	N
Pointing RA	324.418350	324.4399241125072	Subarray requested	NONE	NONE
Pointing Dec	-14.540812	-14.55835768994538	Alternating exposures requested	N	N
Pointing Roll	289.183783	289.3458387569127	Primary exposure time	0.000000	3.2
SIM focus pos (mm)	-0.684267	-0.6828225247311905			
SIM defocus (mm)	0	0.001444936568705701			
SIM translation stage pos (mm)	-190.132523	-190.1400660498719			
SIM translation stage offset (mm)	0	0.00754346686406393			
Observation start time	118853993.184000	118852922.89238			
Observation start date	2001-10-07T14:58:49	2001-10-07T14:42:02			
Observation end time	118868993.184000	118869376.70553			
Observation end date	2001-10-07T19:08:49	2001-10-07T19:16:16			
Read mode	TIMED	TIMED			

## 2.3 Aspect





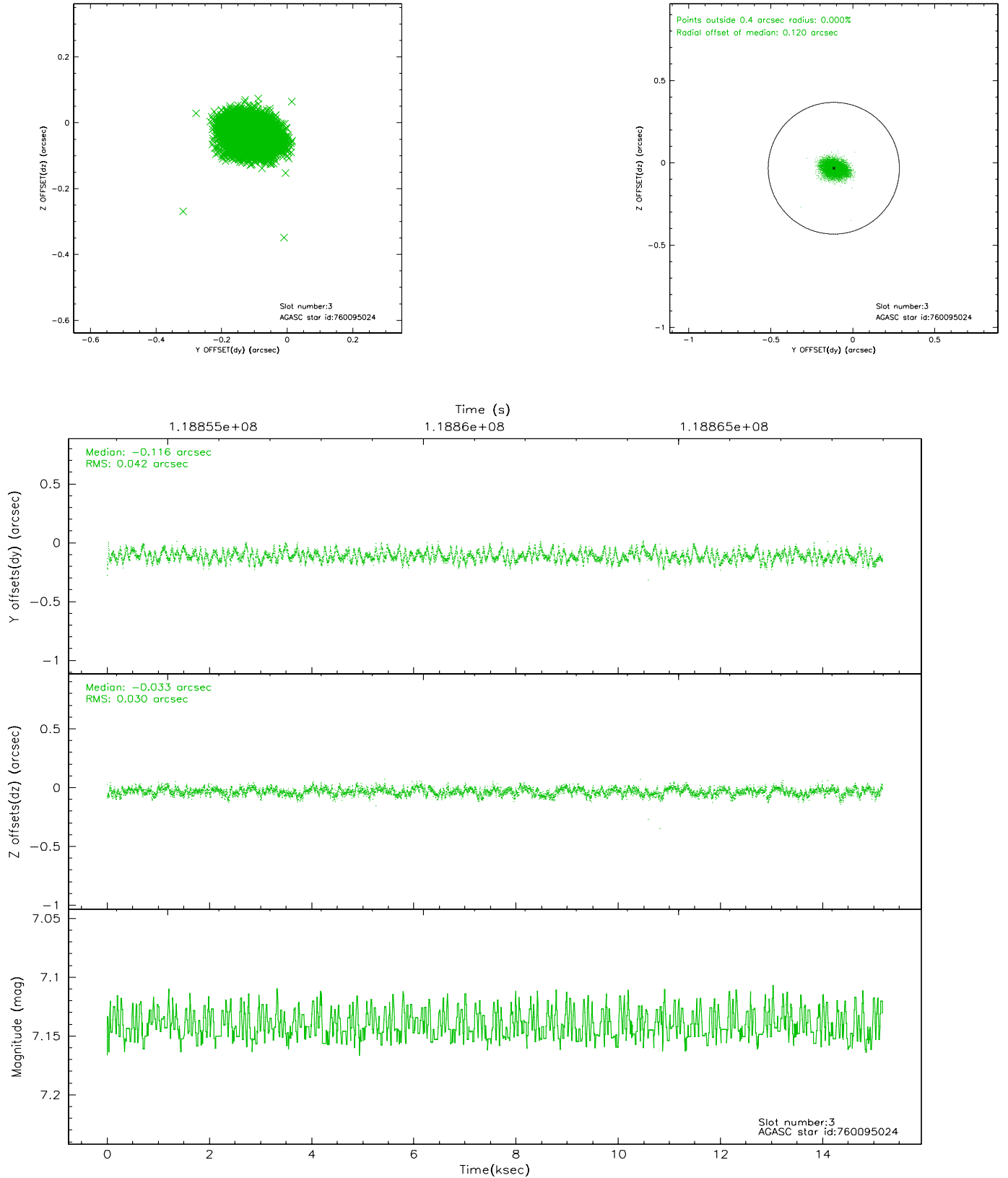
### Slot Statistics

slot	status	id	mag	n_pts	med_dy	med_dz	dr1	dr2	ra	dec	mean_y	mean_z
0	FID	ACIS-S-2	7.12	3703	0.005	0.029	0.009	0.014	0.000000	0.000000	-755.81	-1728.24
1	FID	ACIS-S-4	7.20	3703	-0.074	-0.010	0.007	0.012	0.000000	0.000000	2157.25	179.91
2	FID	ACIS-S-5	7.24	3703	0.038	-0.010	0.007	0.012	0.000000	0.000000	-1808.24	173.91
3	GUIDE	760095024	7.14	7402	-0.116	-0.033	0.054	0.089	324.813350	-13.894859	-1742.92	2067.11
4	GUIDE	760087264	8.78	7402	-0.128	0.005	0.078	0.121	323.928594	-14.062450	-2188.04	-1050.33
5	GUIDE	760092504	9.34	7392	0.084	-0.138	0.092	0.150	323.979177	-14.585530	-350.41	-1499.07
6	GUIDE	760091120	9.43	7404	0.184	0.133	0.137	0.222	325.186892	-14.699006	1420.45	2338.88
7	GUIDE	760088424	9.26	7398	-0.029	0.032	0.077	0.128	324.102285	-13.978674	-2274.26	-378.27

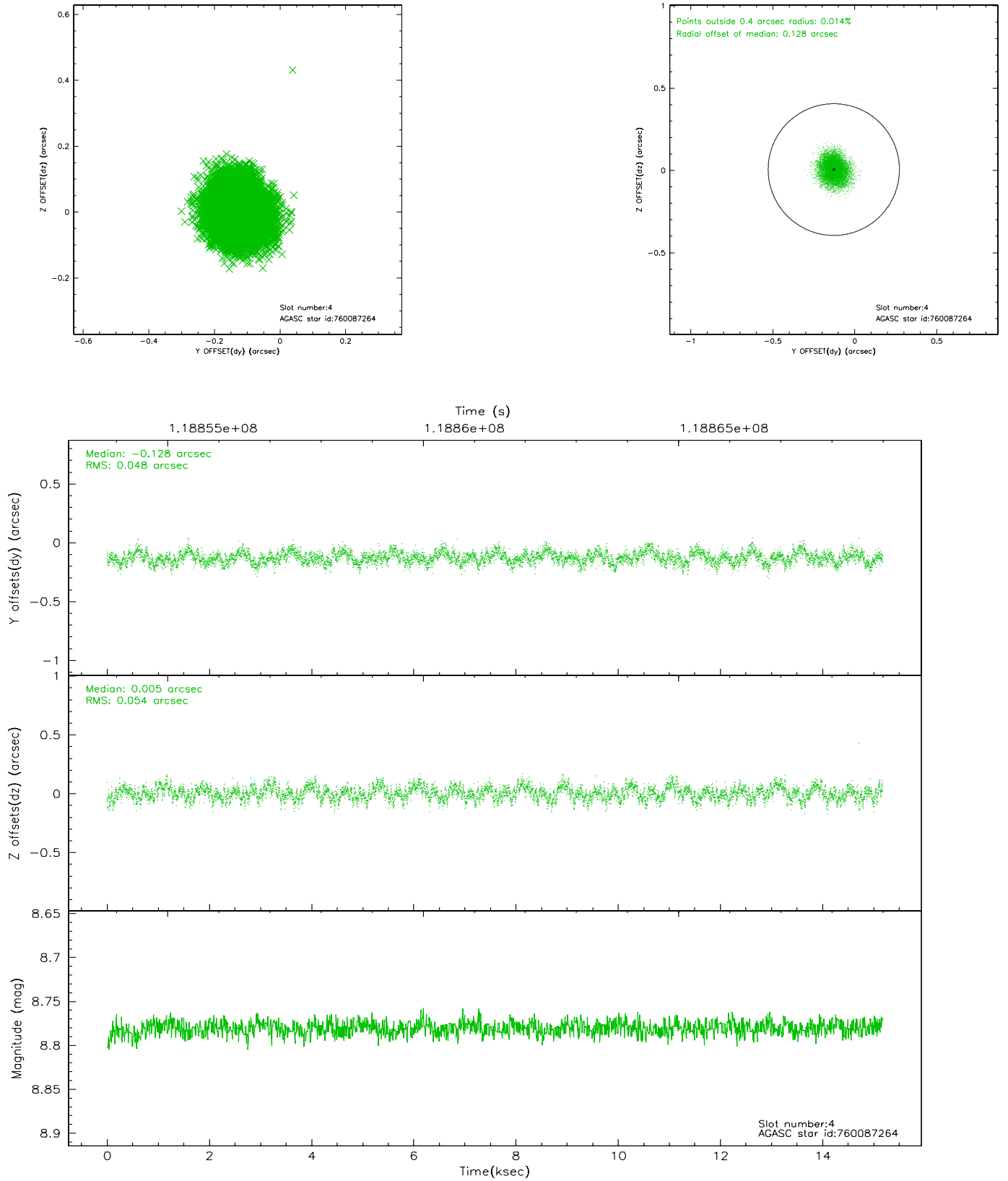


## 2.4 Star Slots

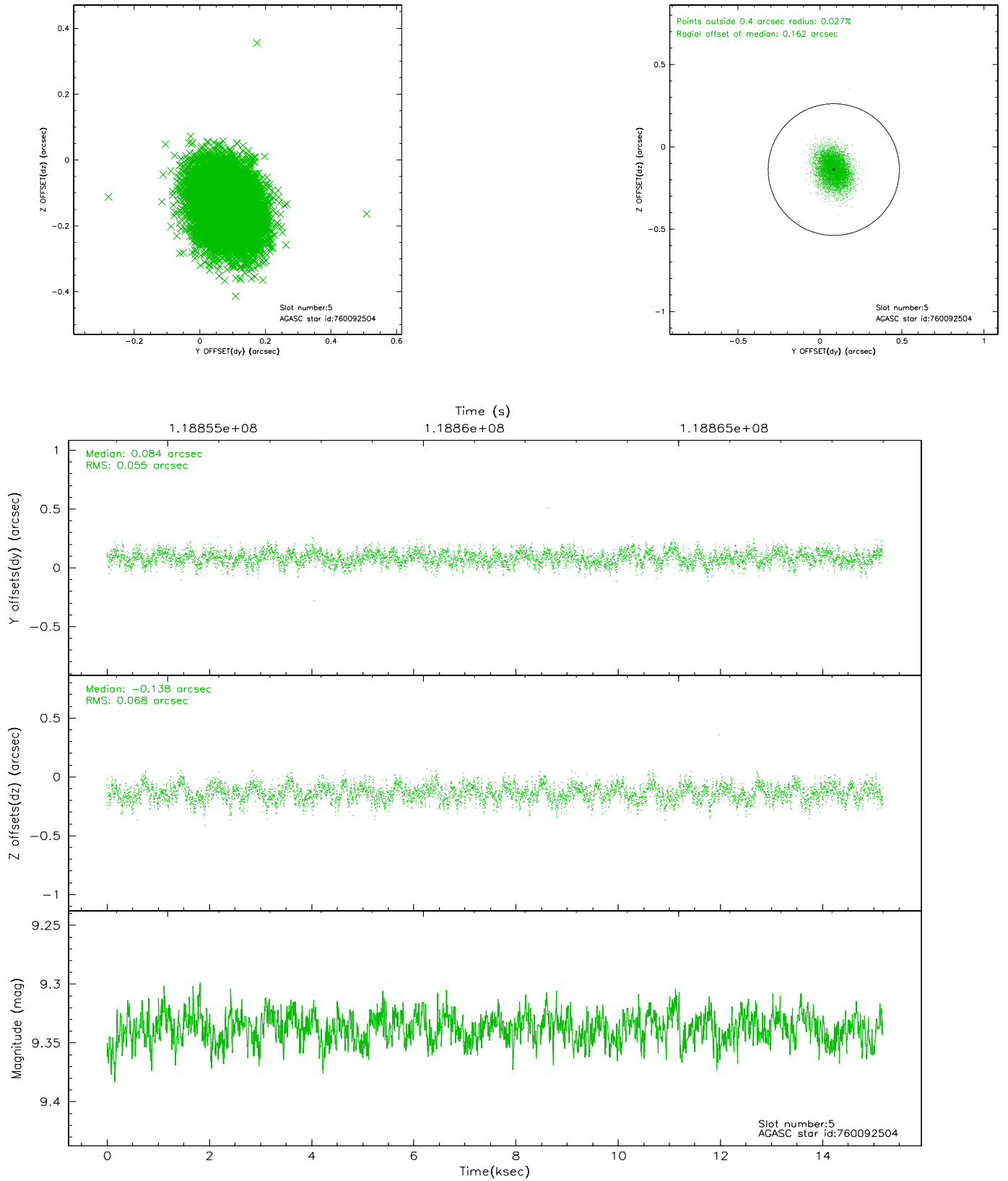
### 2.4.1 Slot 3



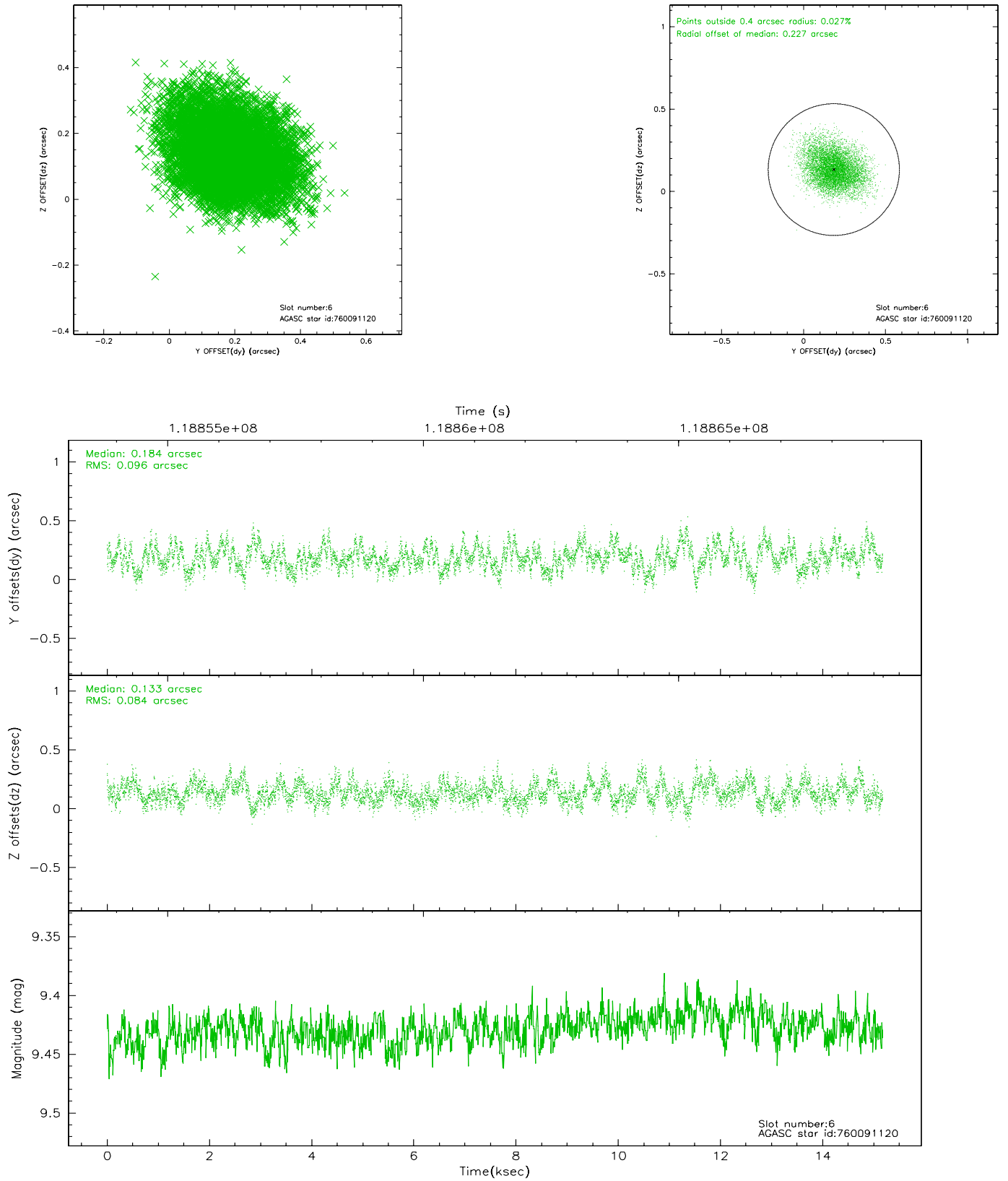
## 2.4.2 Slot 4



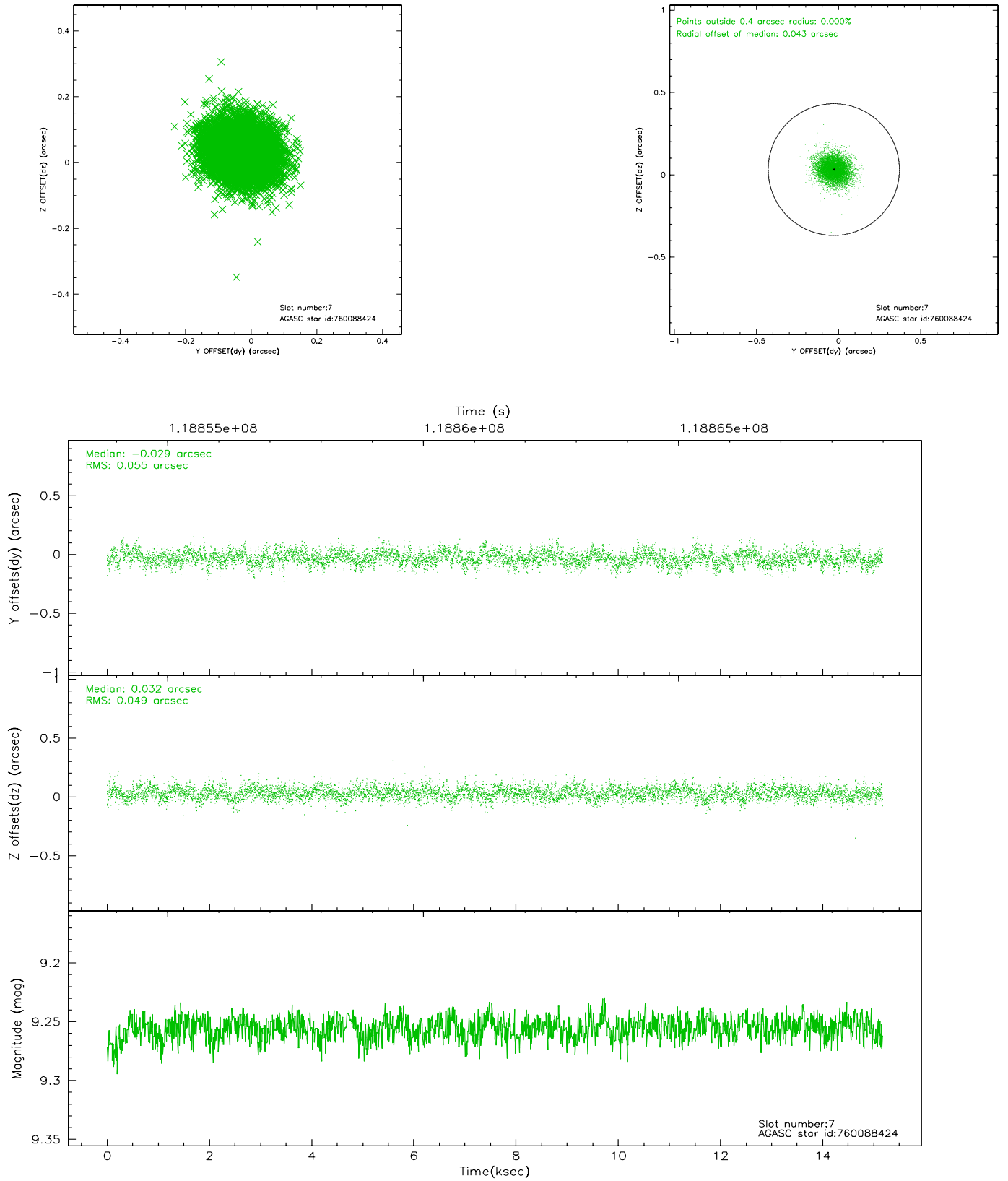
### 2.4.3 Slot 5



## 2.4.4 Slot 6

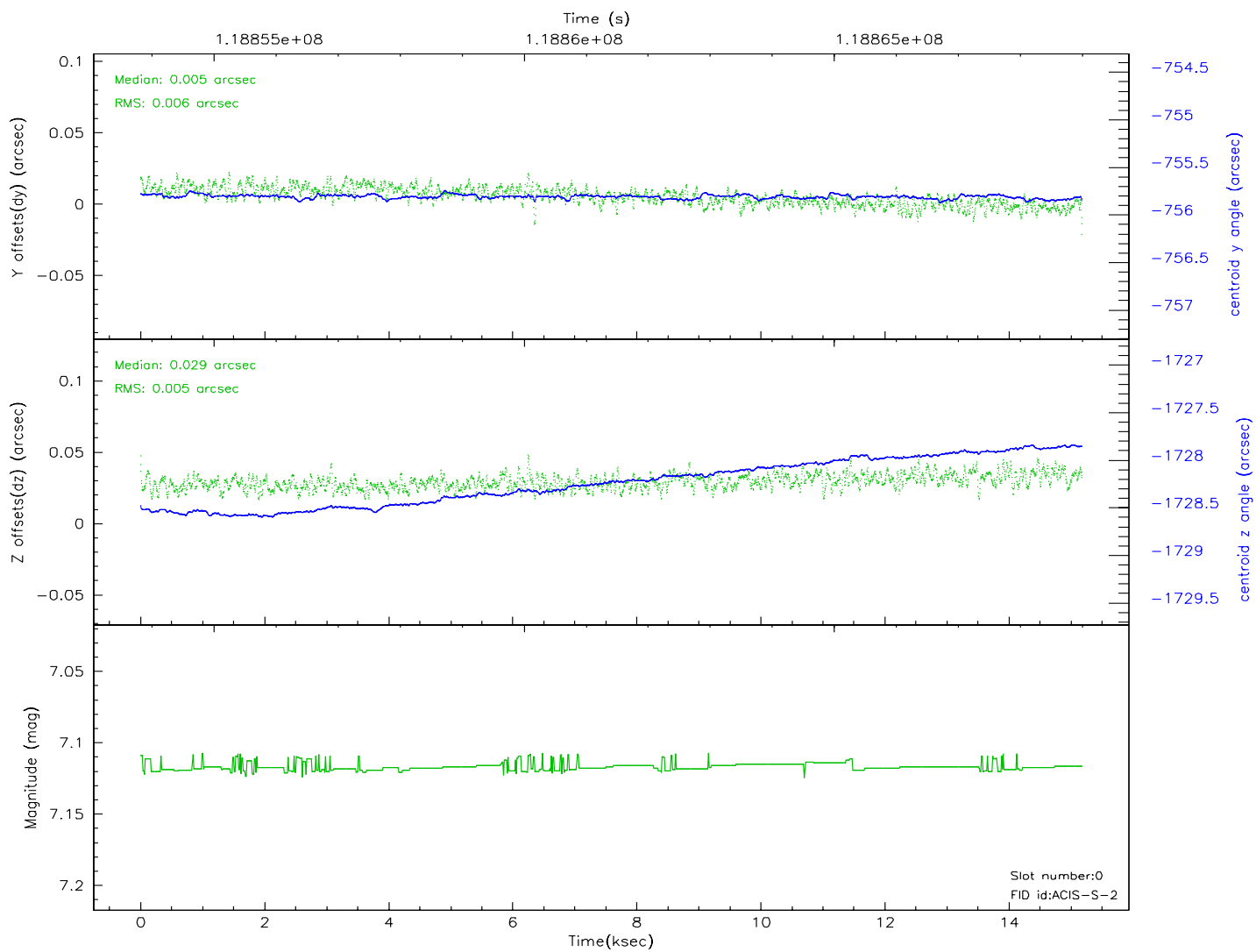
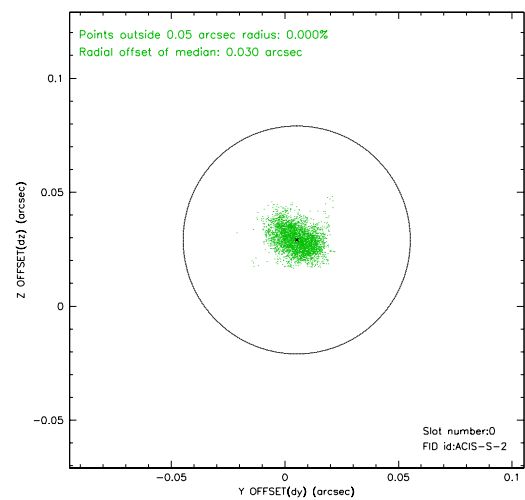
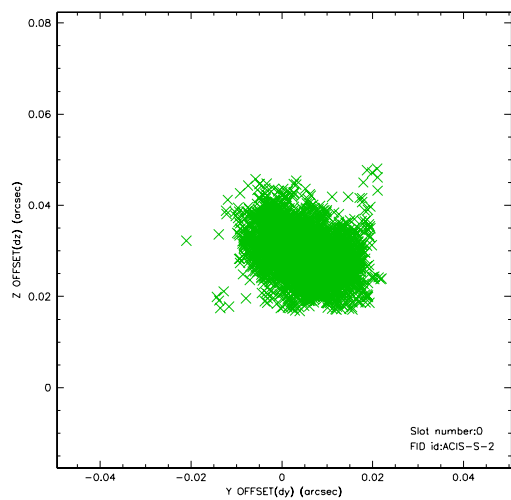


## 2.4.5 Slot 7

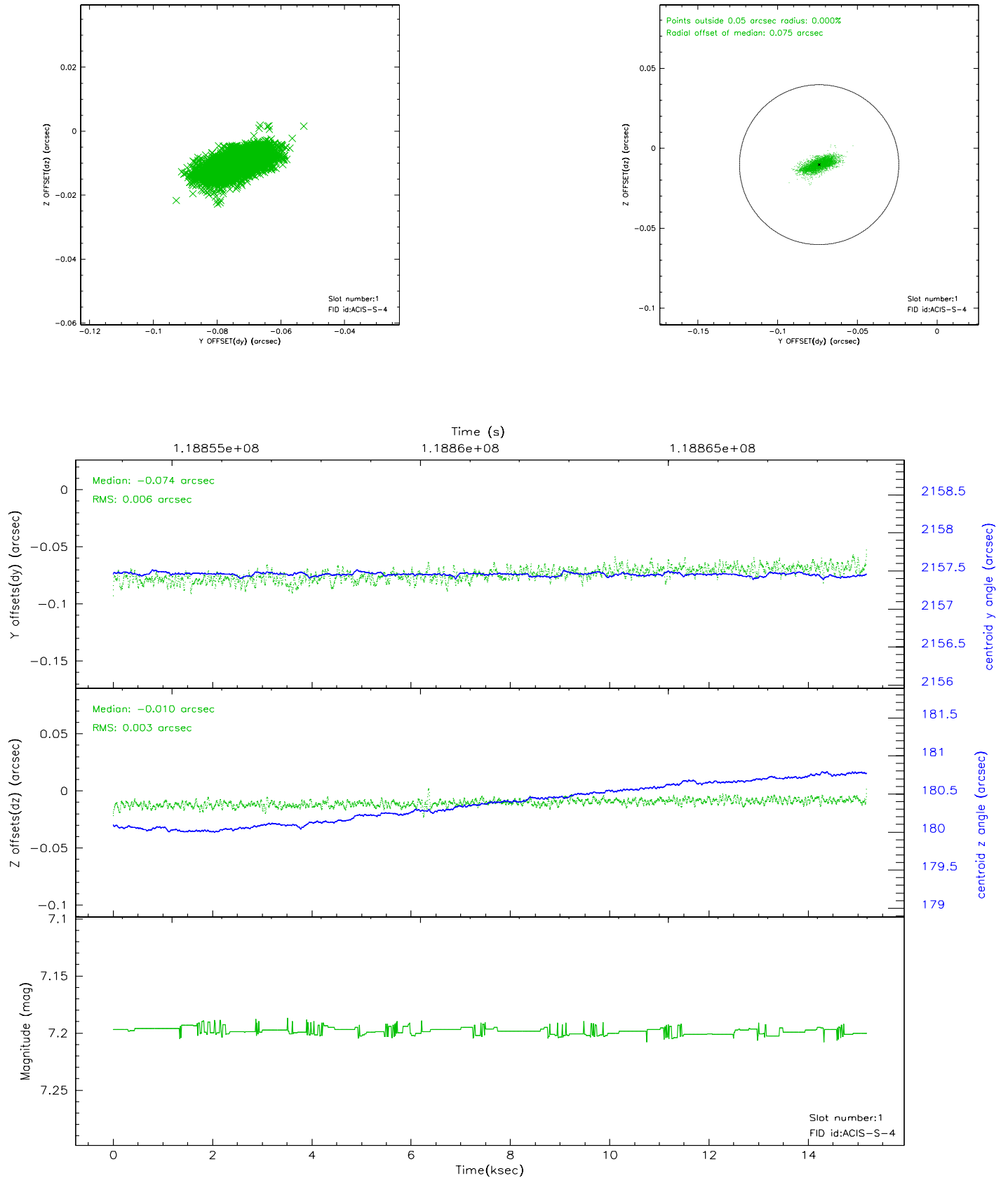


## 2.5 FID Slots

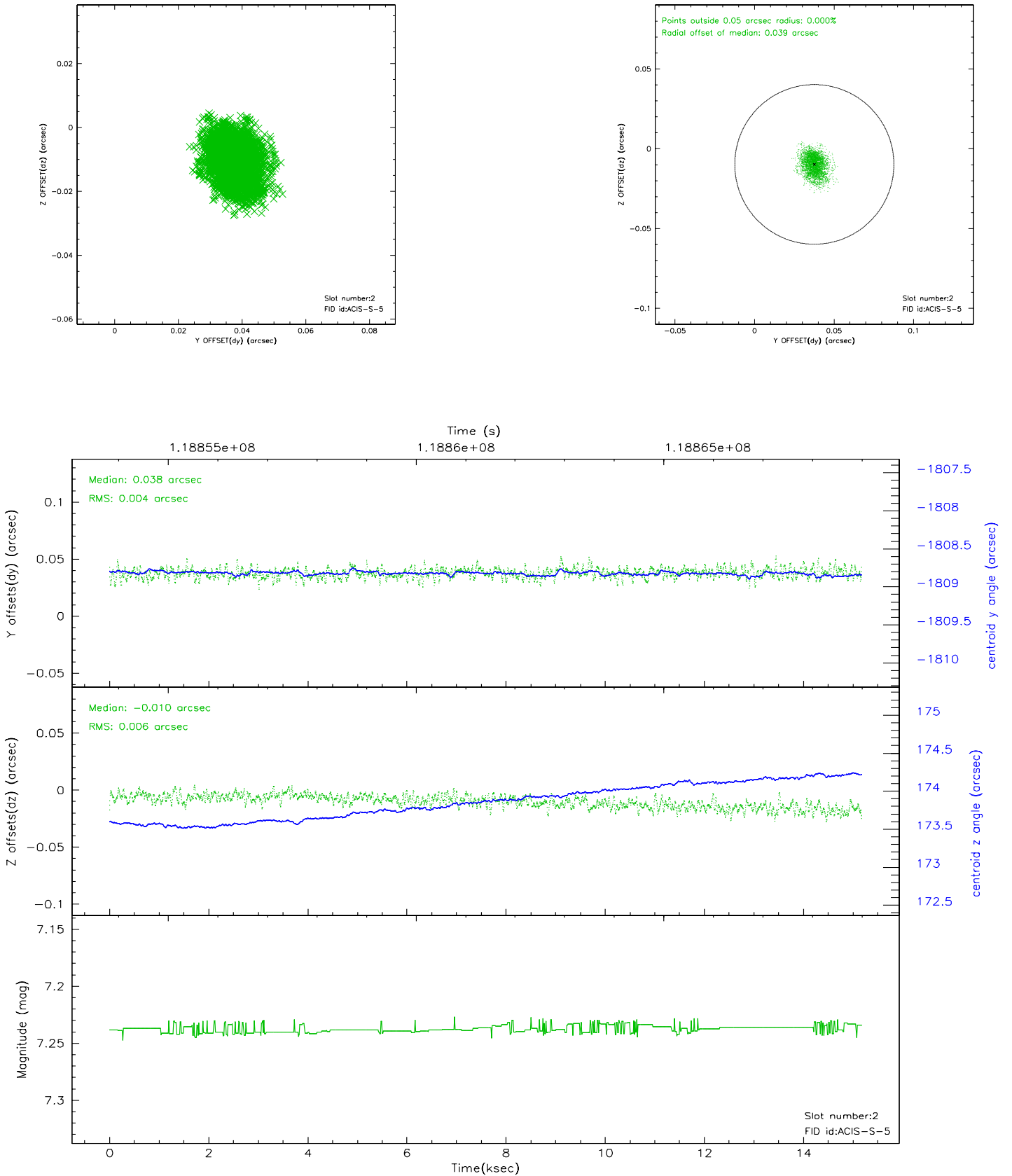
### 2.5.1 Slot 0



## 2.5.2 Slot 1

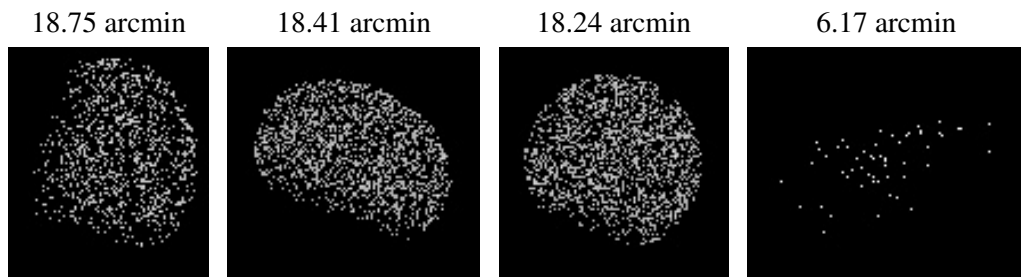


### 2.5.3 Slot 2





### 3 Point Sources



## A Summary

### A.1 Status

V&V Scientist	Beth Sundheim
V&V Date (YYYY-MM-DD)	2007.01.05
V&V Edition	1
V&V Disposition and Status	OK
V&V Charge Time	15.126

### A.2 Comments