

V&V Reference Report

L2 ASCDS Version : 10.3.3

Observation 16076 - L2 Version 2
Chandra X-Ray Center

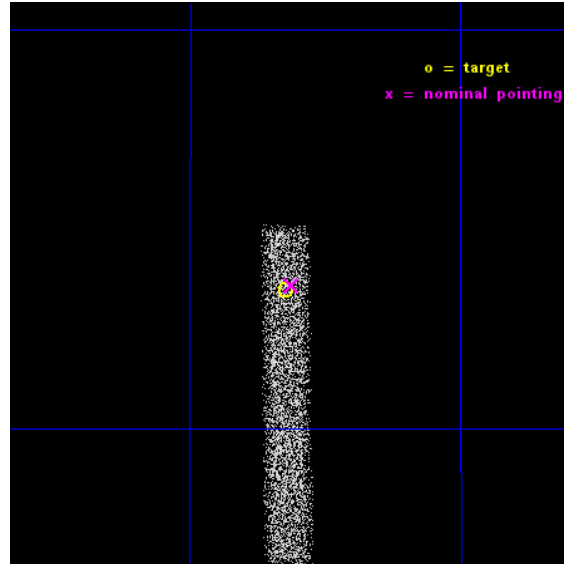
L2 Processing Date : Feb 4 2015

Contents

1	Front	2
2	OBI	3
2.1	OBI	3
2.1.1	Images	3
2.1.2	Bias	3
2.1.3	Parameters	4
2.1.4	Events	4
2.2	Compared Parameters	5
2.3	Aspect	6
2.4	Star Slots	9
2.4.1	Slot 4	9
2.4.2	Slot 5	10
2.4.3	Slot 6	11
2.4.4	Slot 7	12
2.5	FID Slots	13
2.5.1	Slot 0	13
2.5.2	Slot 1	14
2.5.3	Slot 2	15
A	Summary	16
A.1	Status	16
A.2	Comments	16

1 Front

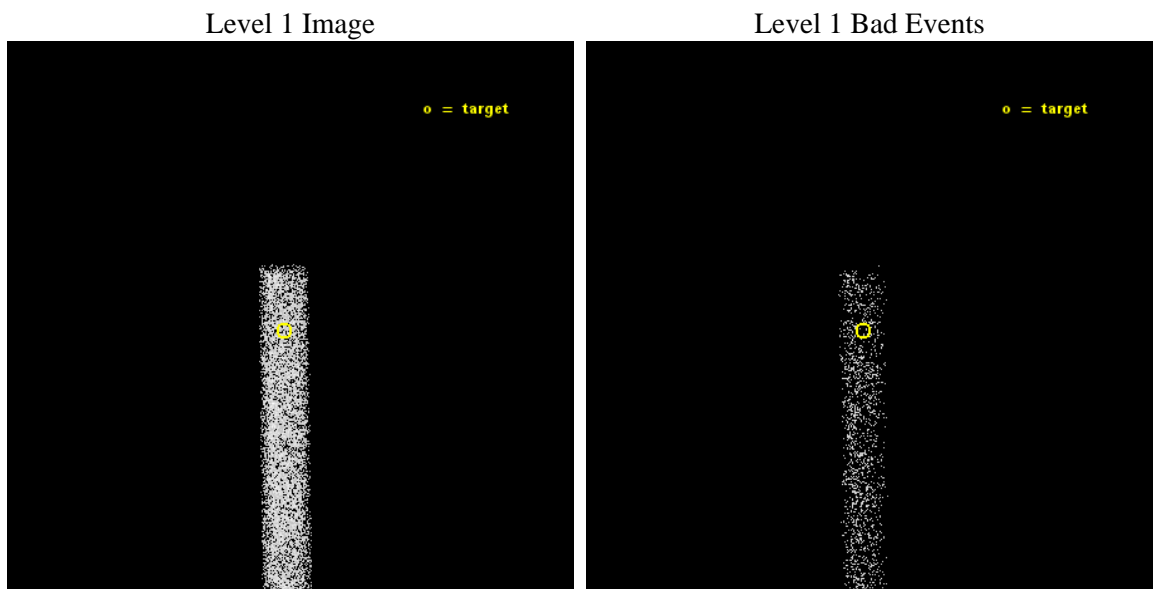
seq_num	702969	Sequence number
obs_id	16076	Observation id
title	PRE-SELECTING DUAL AGN CANDIDATES USING WISE: A CHANDRA PILOT STUDY	
observer	Dr. Shobita Satyapal	Principal investigator
object	SDSSJ1126+1913	Source name
dtcycle	0	
cycle	P	events from which exps? Prim/Second/Both
ra_targ	171.580833	Observer's specified target RA [deg]
dec_targ	19.224889	Observer's specified target Dec [deg]
ra_nom	171.57809332306	Nominal RA [deg]
dec_nom	19.22663533966	Nominal Dec [deg]
roll_nom	89.298257851497	Nominal Roll [deg]
revision	2	Processing version of data
ontime	15069.020478964	Sum of GTIs [s]
livetime	13666.806166301	Livetime [s]
ontime7	15069.020478964	Sum of GTIs [s]
l2events	5999	Number of level 2 events



2 OBI

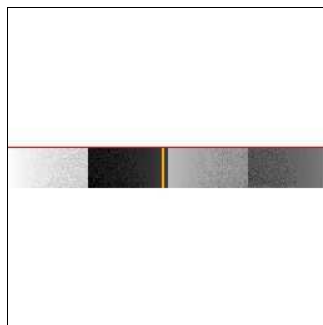
2.1 OBI

2.1.1 Images



2.1.2 Bias

Chip 7



2.1.3 Parameters

obi_num	0	Obi number	sched_exp_time	15000.000000	[s] Scheduled observation exposure time
ascdsver	10.3.3	Processing system revision	ontime	15069.020478964	Sum of GTIs [s]
caldbver	4.6.6	 	ontime7	15069.020478964	Sum of GTIs [s]
date	2015-02-04T20:00:14	Date and time of file creation	l1events	13027	Number of level 1 events
revision	2	Processing version of data			

2.1.4 Events

	ccd 7
level 1 events	13027
rejected events	6787
rejected %	52%

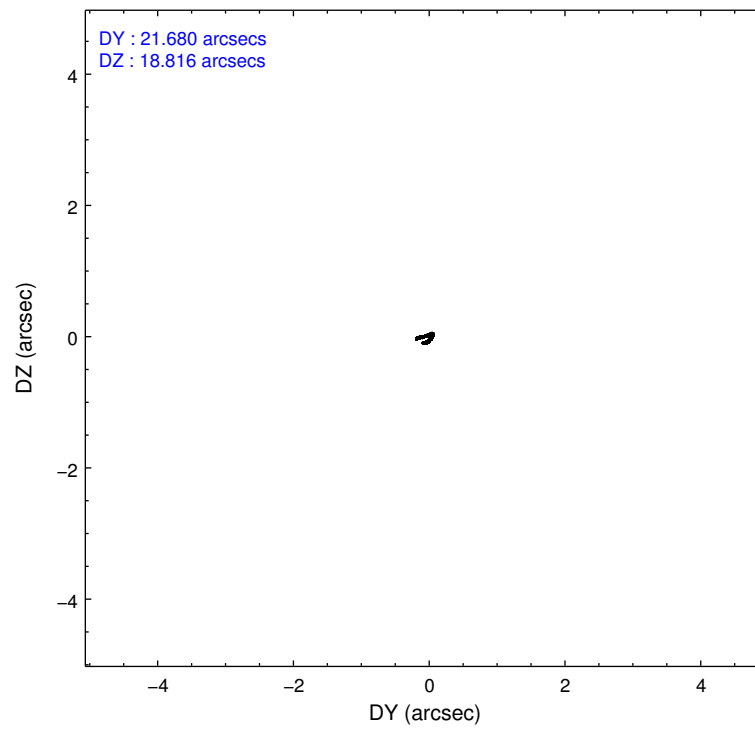
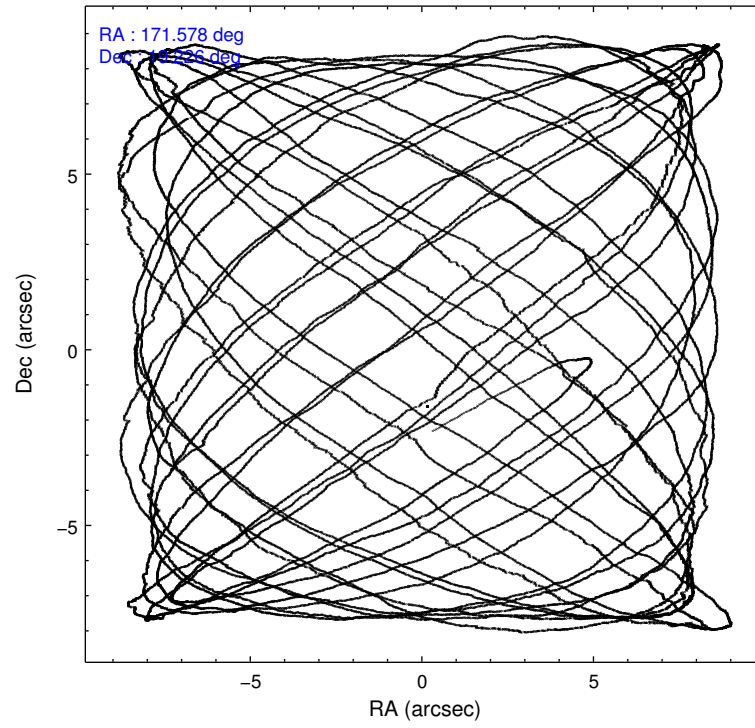
	ccd 7
grade 0 events	641
	4%
grade 1 events	23
	0%
grade 2 events	1145
	8%
grade 3 events	814
	6%
grade 4 events	789
	6%
grade 5 events	1330
	10%
grade 6 events	2851
	21%
grade 7 events	5434
	41%

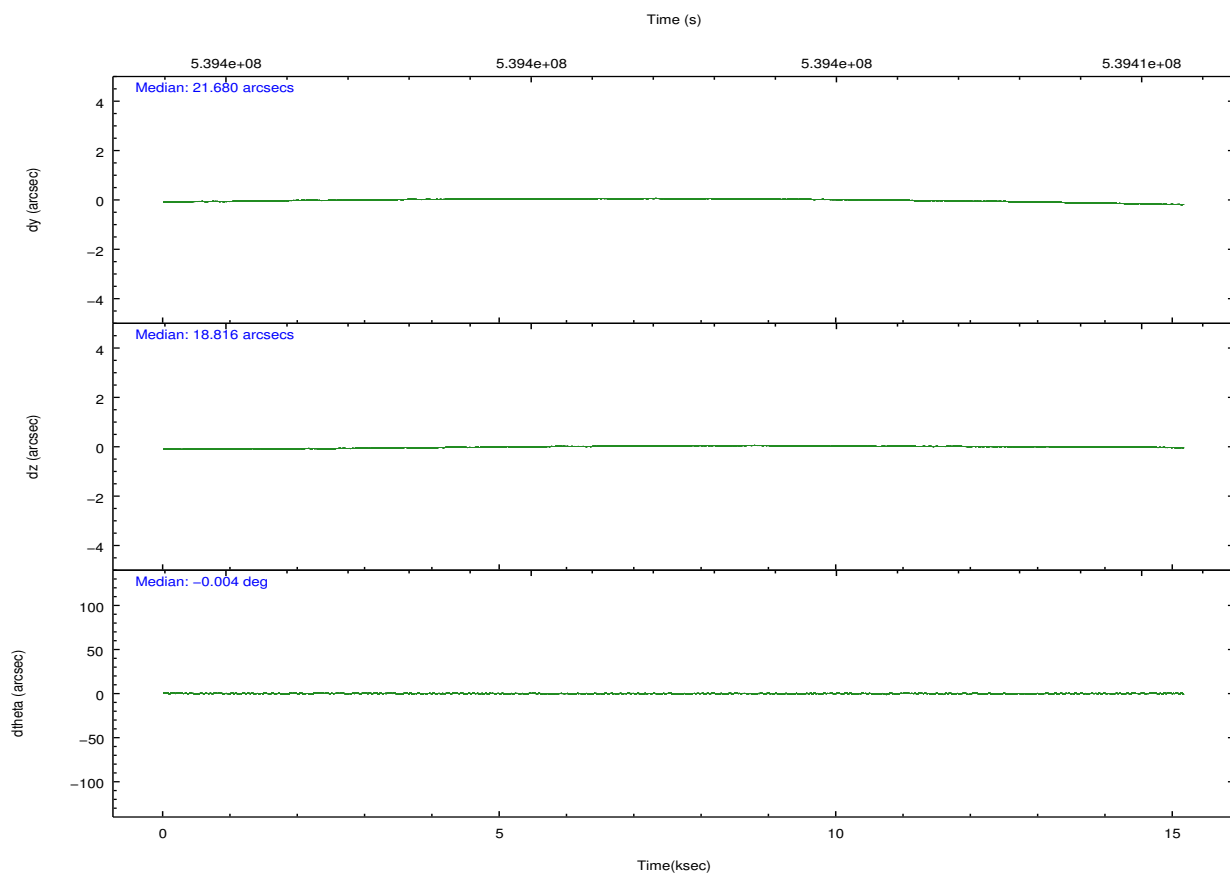
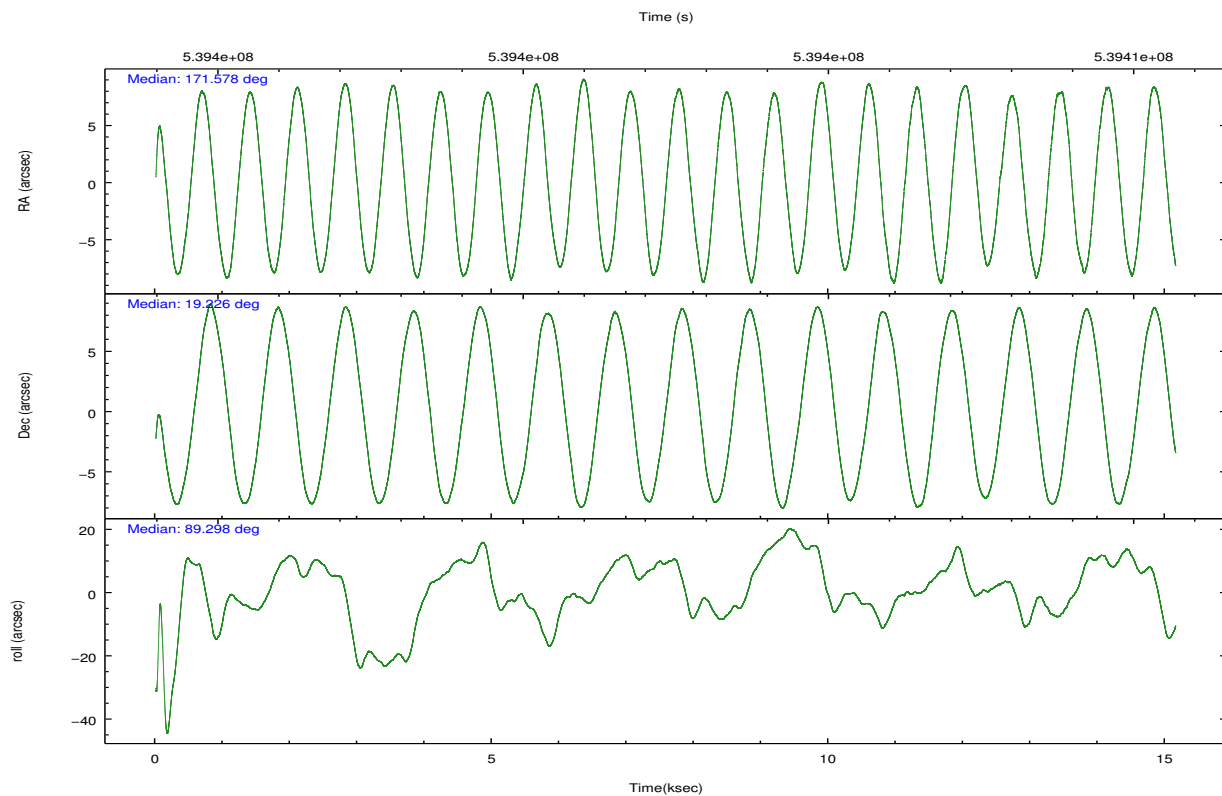
2.2 Compared Parameters

Parameter	Planned	Actual
Instrument	ACIS	ACIS
Detector	ACIS-7	ACIS-7
Grating	NONE	NONE
Data mode	FAINT	FAINT
Observation mode	POINTING	POINTING
[deg] Pointing RA	171.592659	171.5780933230617
[deg] Pointing Dec	19.202890	19.22663533965998
[deg] Pointing Roll	89.136808	89.29825785149741
[mm] SIM focus pos	-0.684267	-0.6828225247311905
[mm] SIM defocus	0	0.001444936568705701
[mm] SIM translation stage pos	-190.132523	-190.1425803651734
[mm] SIM translation stage offset	0	0.01005778216563158
[s] Observation start time (MET)	539394923.184000	539393917.9909
Observation start date	2015-02-03T23:54:16	2015-02-03T23:38:37
[s] Observation end time (MET)	539409923.184000	539410266.74182
Observation end date	2015-02-04T04:04:16	2015-02-04T04:11:06
Read mode	TIMED	TIMED

Parameter	Planned	Actual
Obspar format version number	7	7
Obspar file type	PREDICTED	ACTUAL
Obspar update status	NONE	UPDATED
Number of optional ACIS chips dropped	0	0
On-chip summing requested	N	N
Subarray requested	CUSTOM	1/8
Subarray start row	449	449
Subarray row count	128	128
Alternating exposures requested	N	N
[s] Primary exposure time	0.000000	0.4

2.3 Aspect



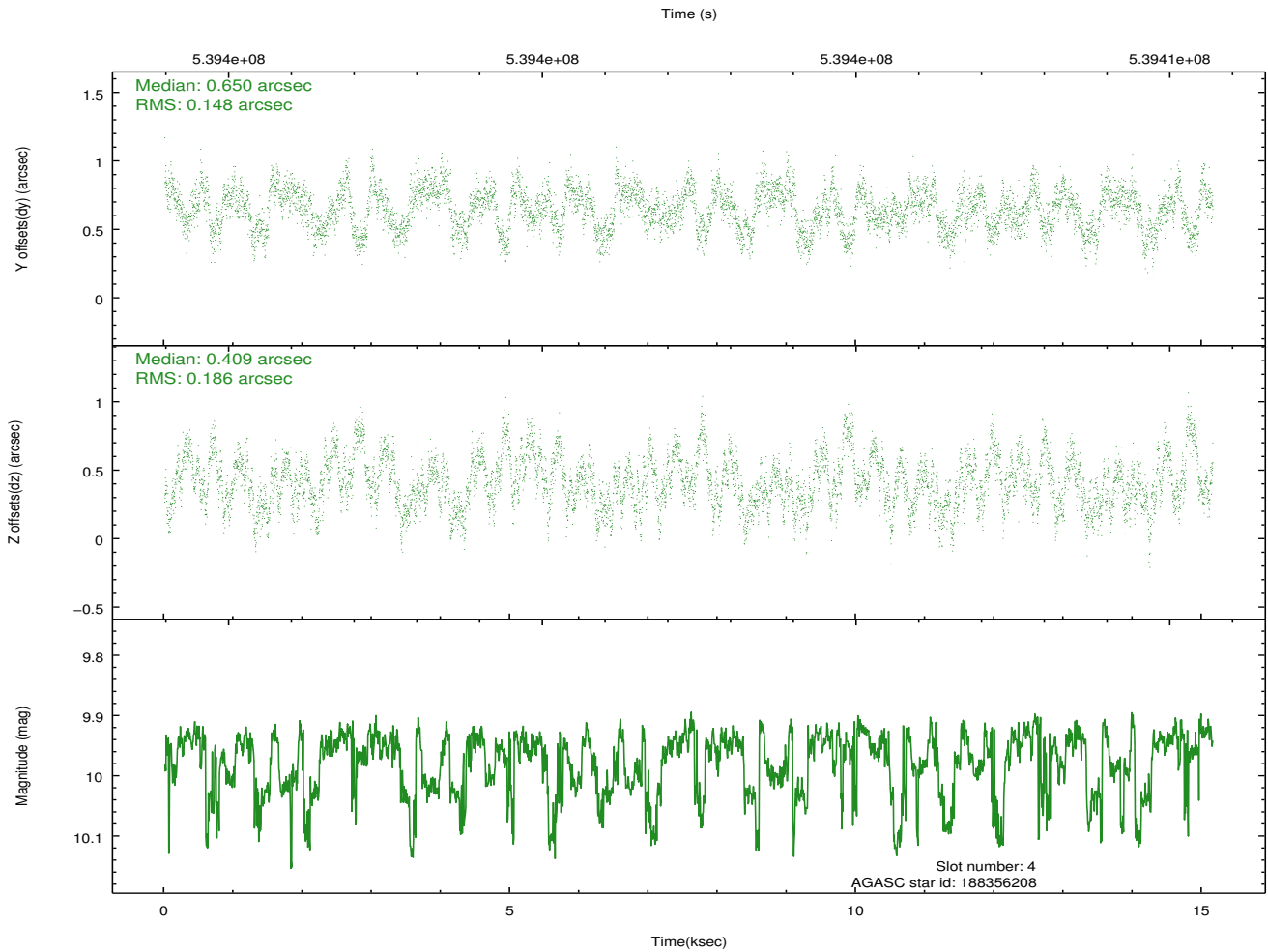
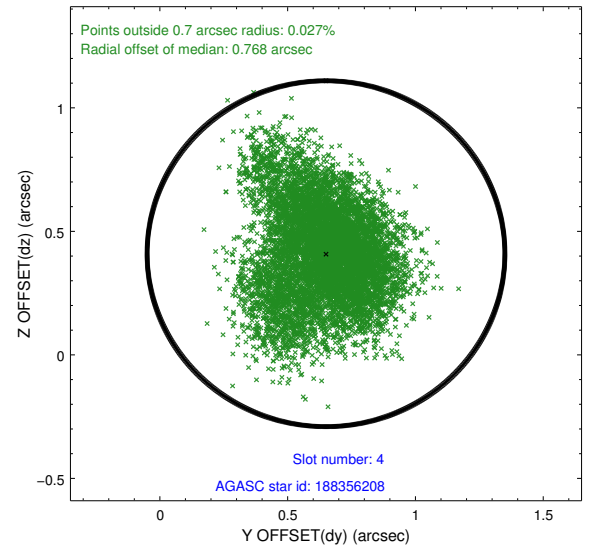
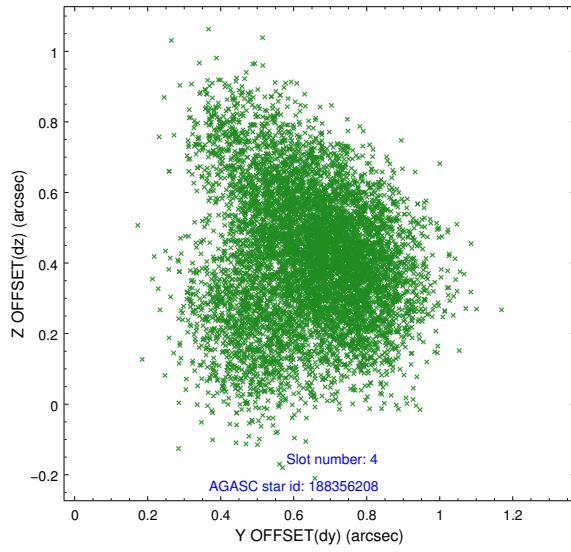


Slot Statistics

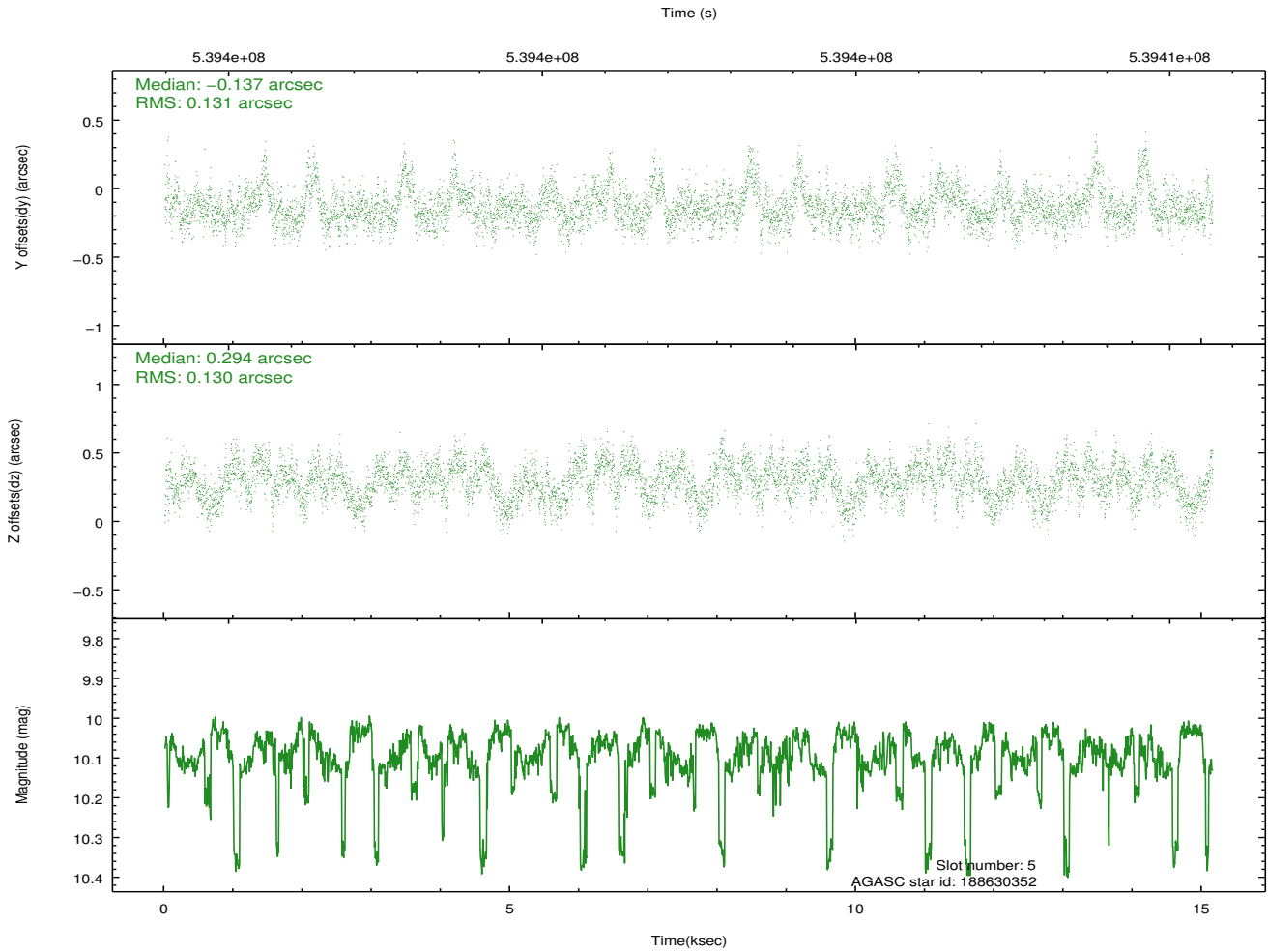
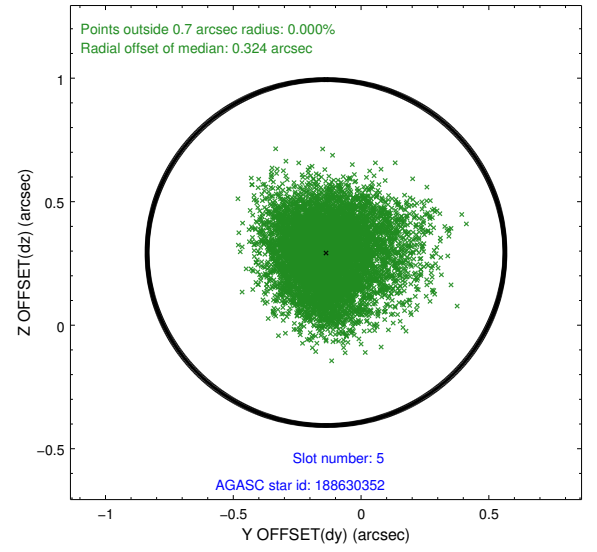
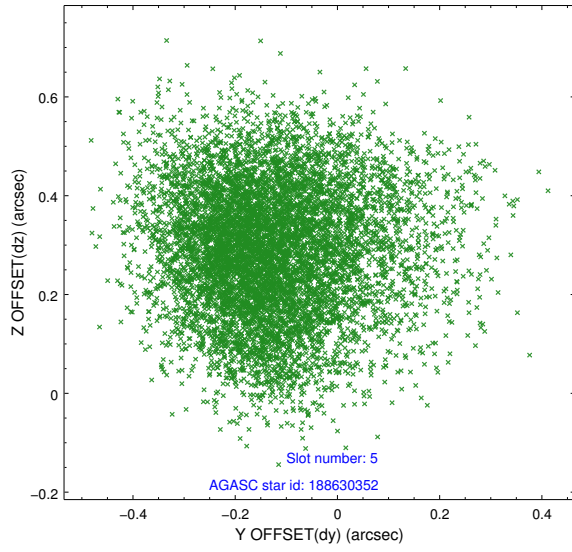
slot	status	used	id	mag	n_pts	med_dy	med_dz	dr1	dr2	ra	dec	mean_y	mean_z
0	FID		ACIS-S-2	7.12	3696	-0.144	-0.115	0.007	0.011	0.000000	0.000000	-774.96	-1740.34
1	FID		ACIS-S-4	7.22	3696	0.362	0.100	0.006	0.010	0.000000	0.000000	2138.69	168.03
2	FID		ACIS-S-5	7.22	3696	-0.249	0.024	0.006	0.011	0.000000	0.000000	-1827.52	161.98
3	OMITTED			0.00	0	0.000	0.000	0.000	0.000	0.000000	0.000000	0.00	0.00
4	GUIDE	used	188356208	9.97	7379	0.650	0.409	0.253	0.417	171.828550	18.737455	-1661.91	-828.35
5	GUIDE	used	188630352	10.09	7375	-0.137	0.294	0.197	0.320	171.776738	19.692394	1771.59	-596.13
6	GUIDE	used	188631912	9.40	7384	-0.280	-0.361	0.144	0.242	171.175114	19.651700	1595.98	1440.51
7	GUIDE	used	188632368	8.59	7388	-0.252	-0.313	0.185	0.302	171.306366	19.484250	999.16	986.70

2.4 Star Slots

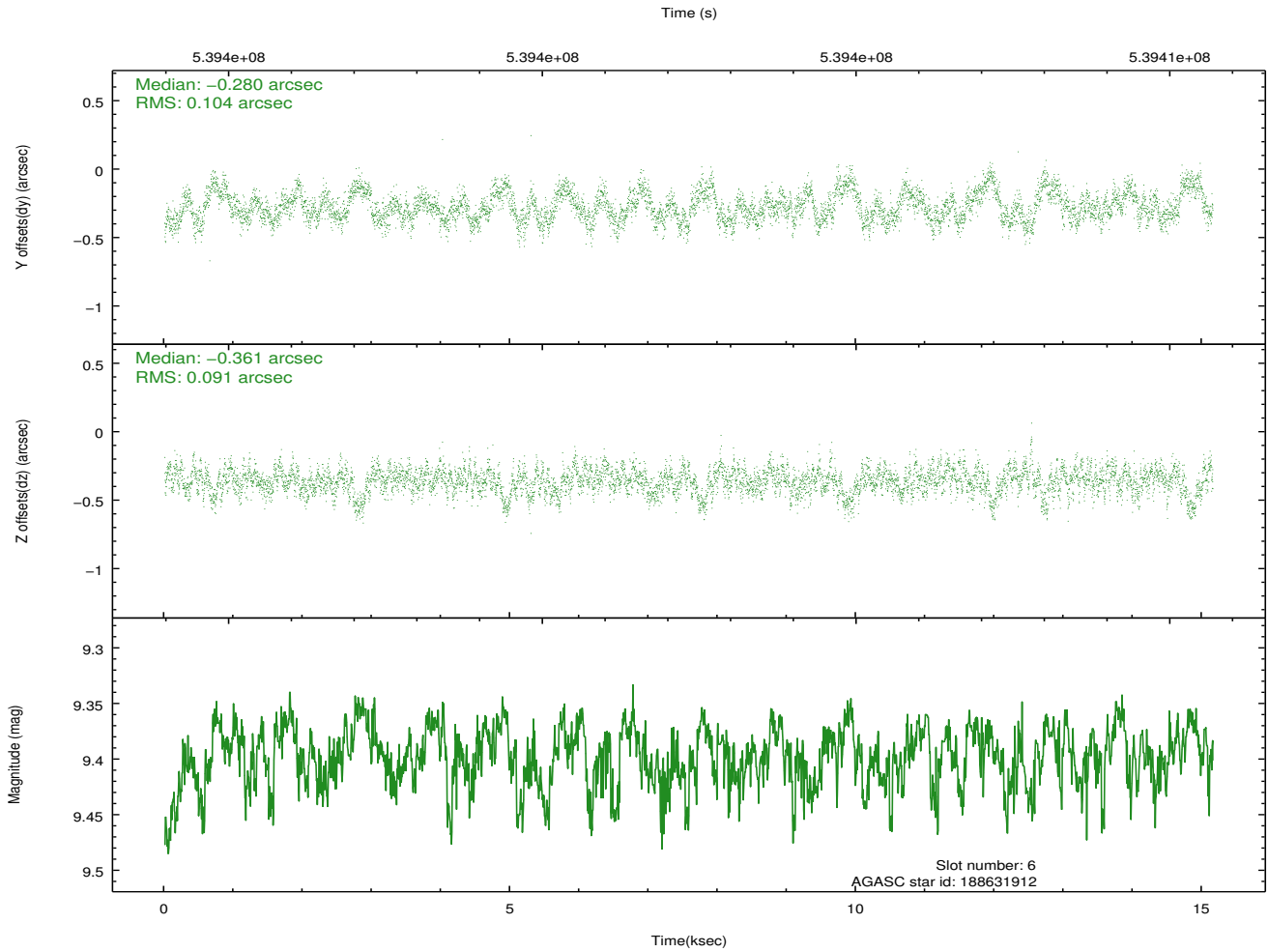
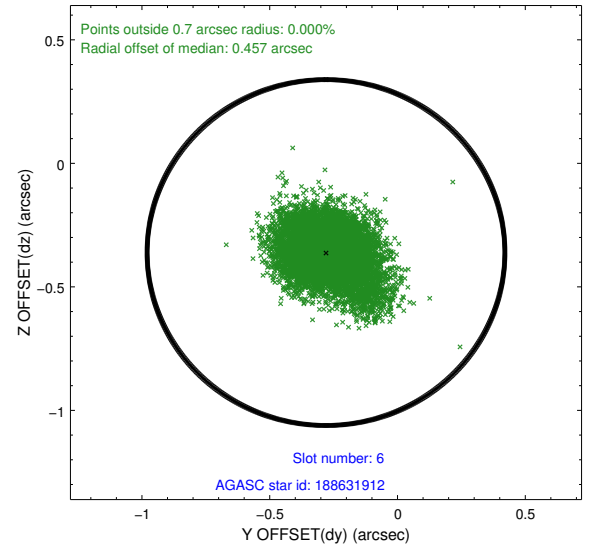
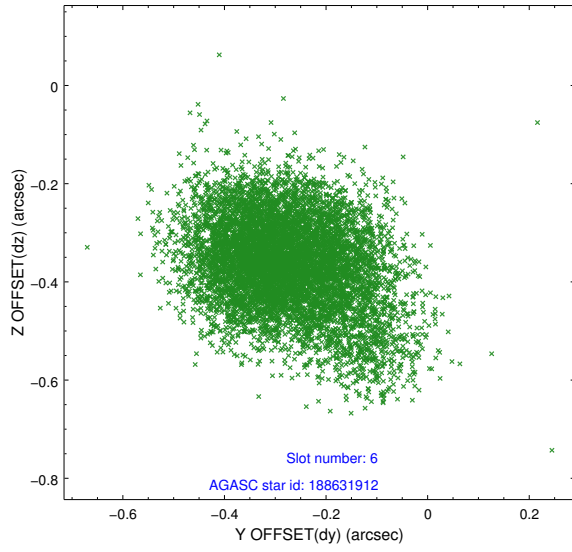
2.4.1 Slot 4



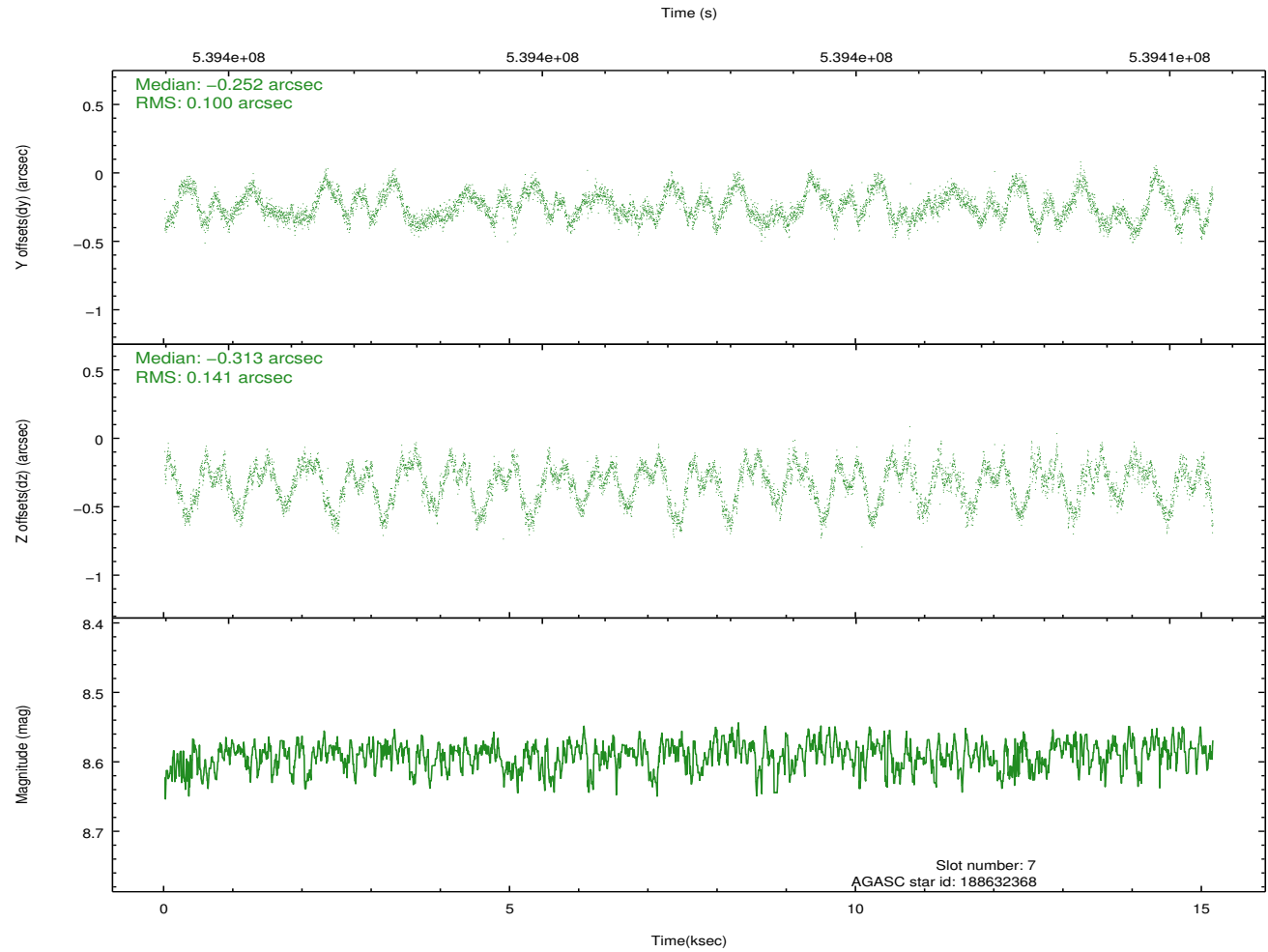
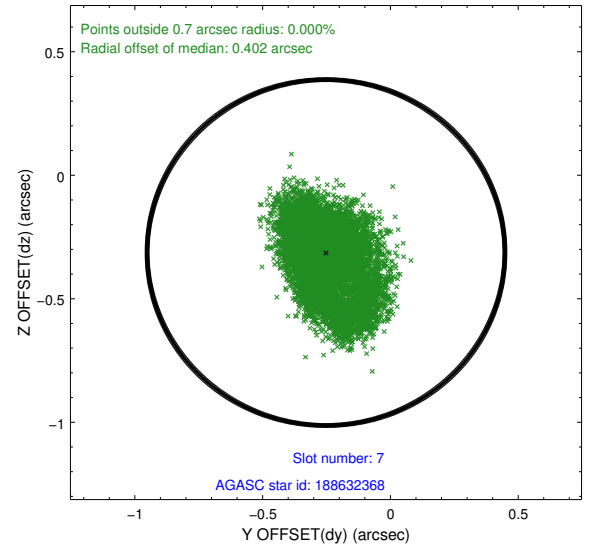
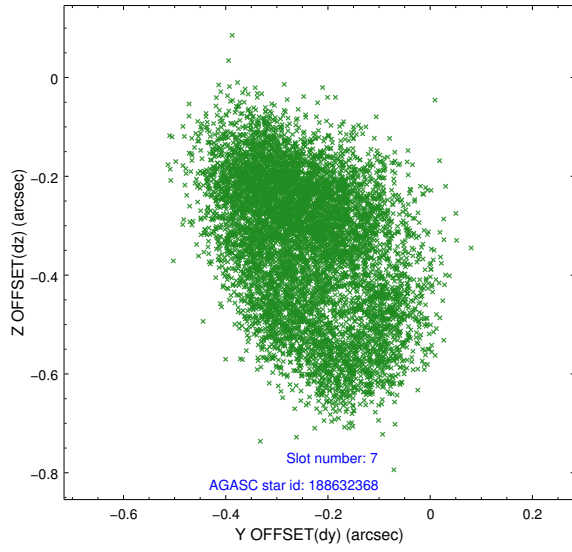
2.4.2 Slot 5



2.4.3 Slot 6

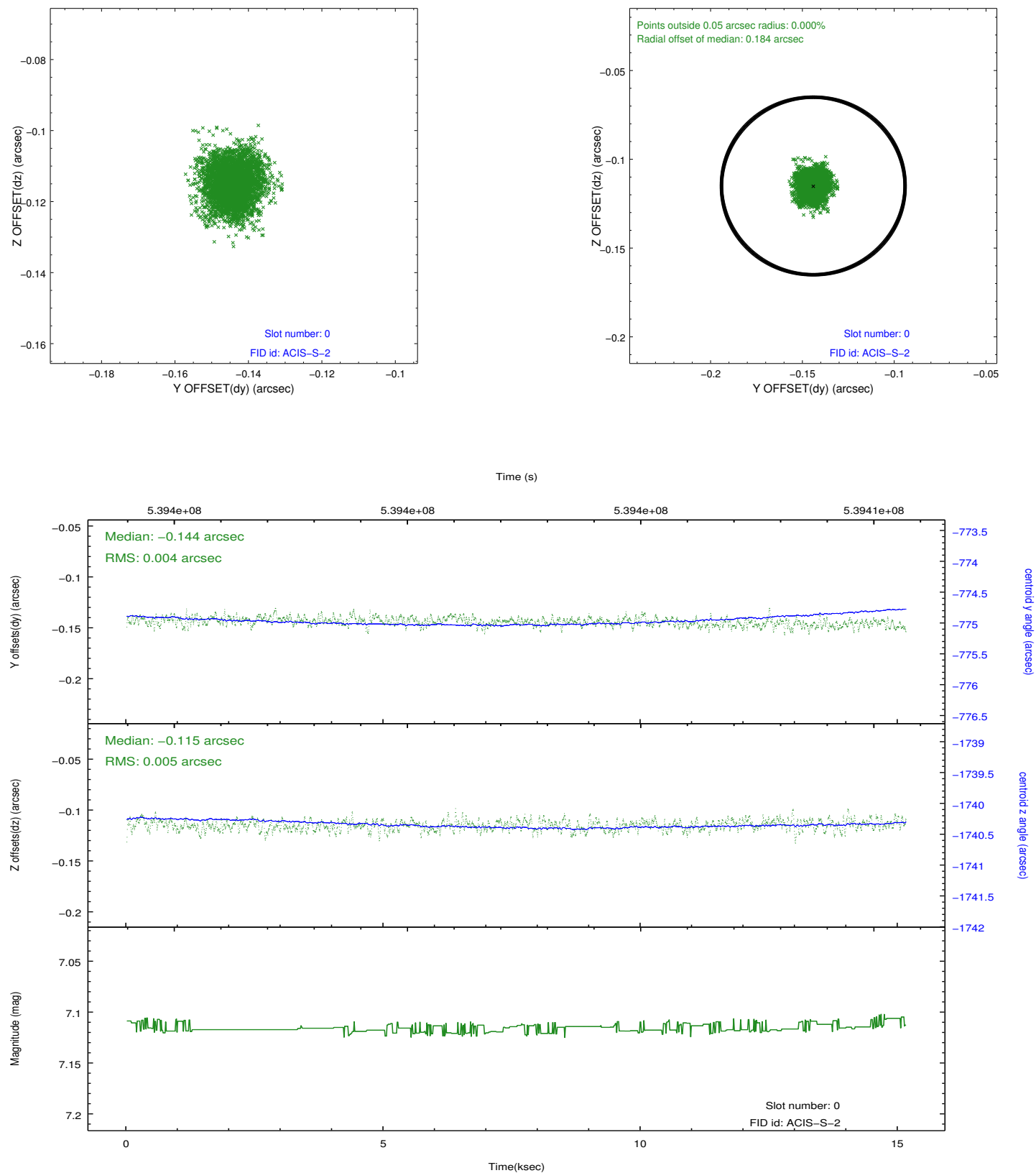


2.4.4 Slot 7

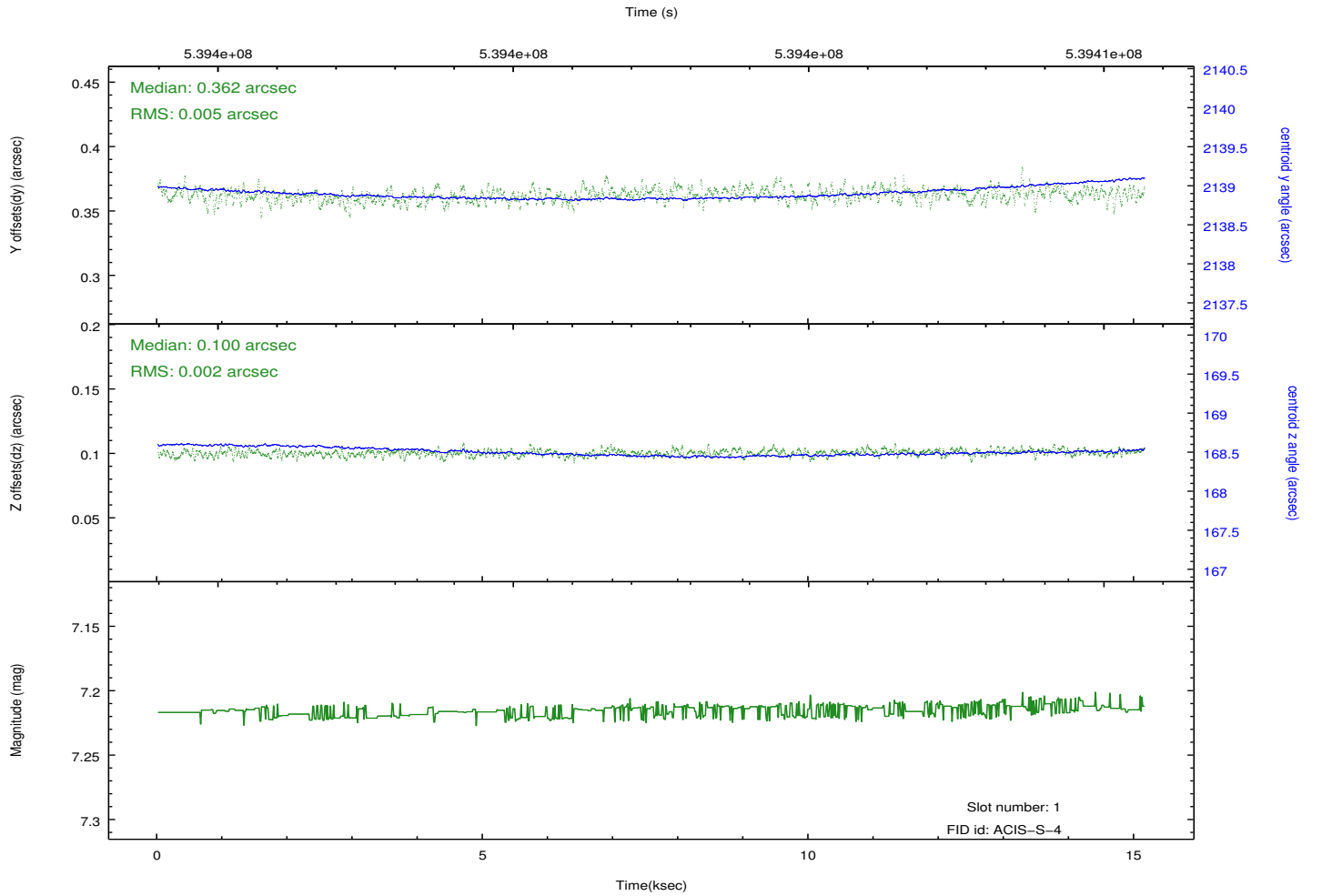
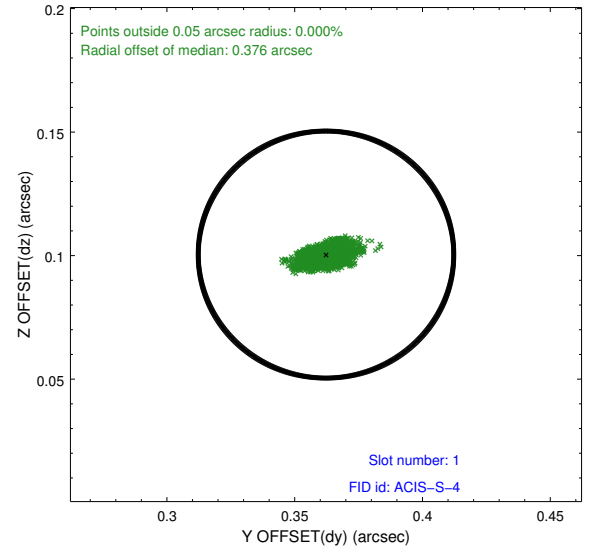
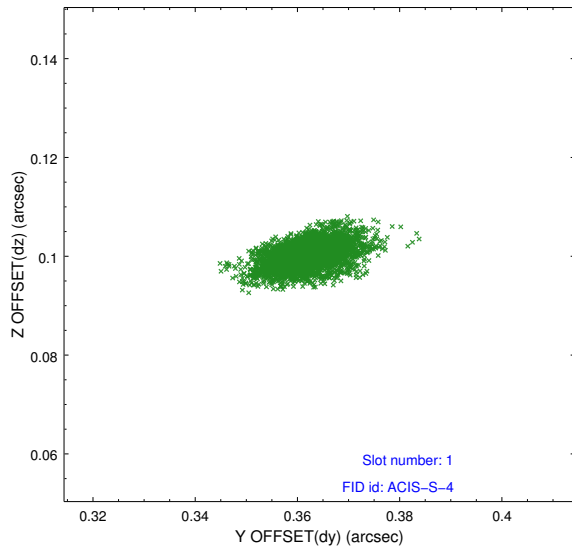


2.5 FID Slots

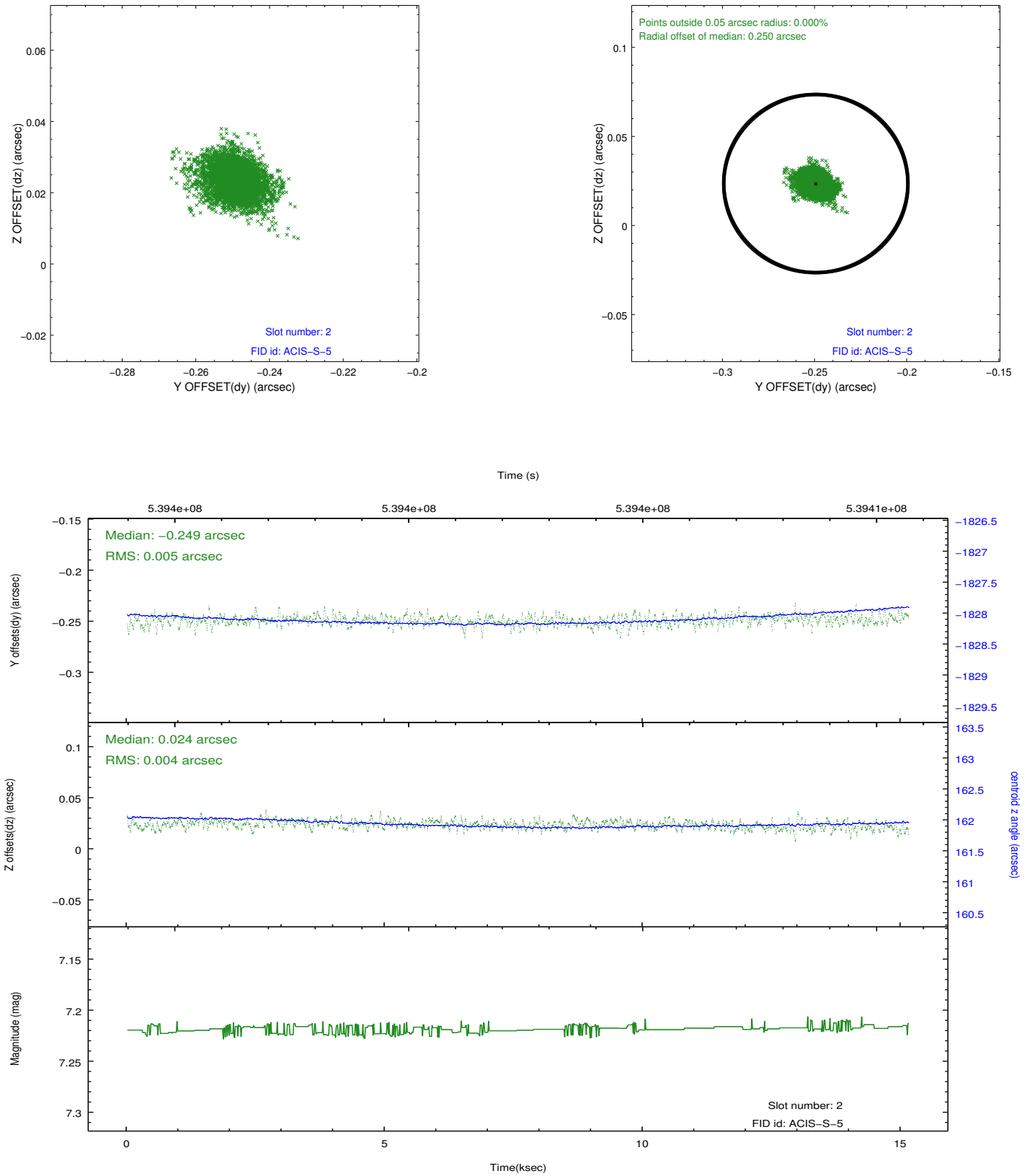
2.5.1 Slot 0



2.5.2 Slot 1



2.5.3 Slot 2



A Summary

A.1 Status

V&V Scientist	Beth Sundheim
V&V Date (YYYY-MM-DD)	2015.02.04
V&V Edition	1
V&V Disposition and Status	OK
V&V Charge Time	15.069020478964

A.2 Comments

The guide star in slot 3 was removed from the aspect solution due to poor data quality. The aspect solution is improved by the removal of this star from the solution.