

V&V Reference Report

L2 ASCDS Version : 7.6.10

Observation 1526 - L2 Version 001
Chandra X-Ray Center

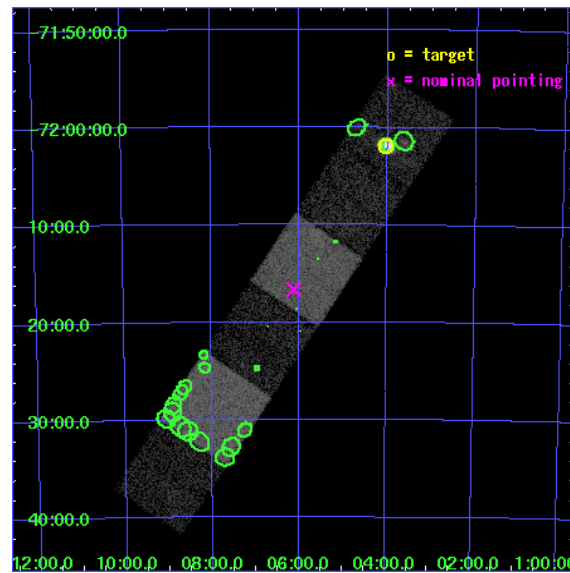
L2 Processing Date : Jun 19 2007

Contents

1	Front	2
2	OBI	3
2.1	OBI	3
2.1.1	Images	3
2.1.2	Bias	3
2.1.3	Parameters	4
2.1.4	Events	4
2.2	Compared Parameters	5
2.3	Aspect	6
2.4	Star Slots	9
2.4.1	Slot 3	9
2.4.2	Slot 4	10
2.4.3	Slot 5	11
2.4.4	Slot 6	12
2.4.5	Slot 7	13
2.5	FID Slots	14
2.5.1	Slot 0	14
2.5.2	Slot 1	15
2.5.3	Slot 2	16
3	Point Sources	17
A	Summary	18
A.1	Status	18
A.2	Comments	18

1 Front

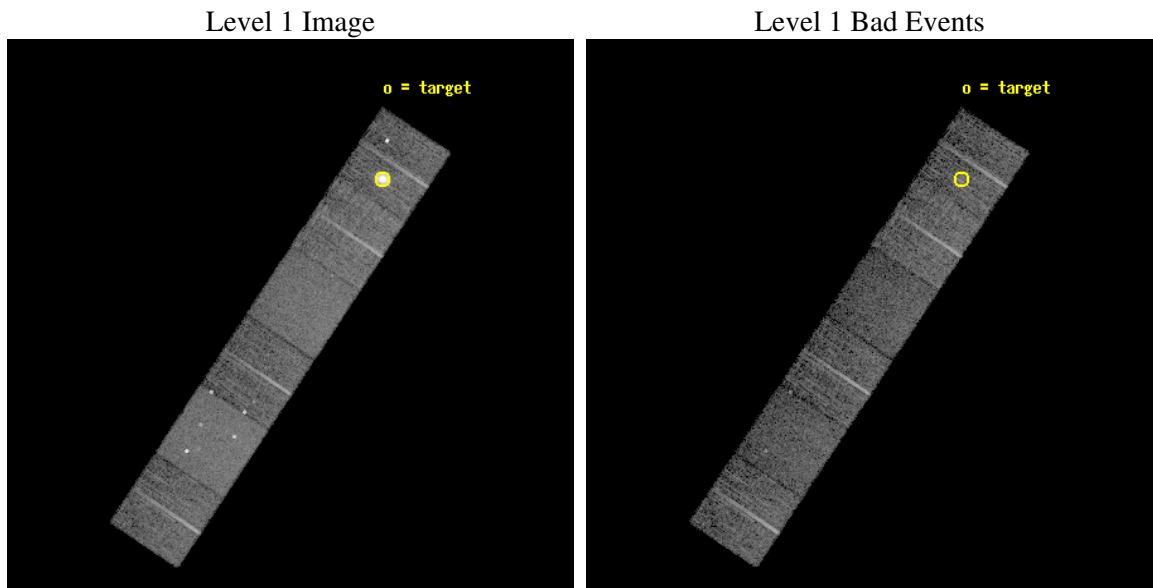
seq_num	590135
obs_id	1526
title	ACIS CALIBRATION OBSERVATION OF THE SUPERNOVA REMNANT E0102-72 (DEC 2000)
observer	Dr. CXC Calibration
object	E0102-72.3 [Chip S5, T=120, Offsets=-17,0,]
dtcycle	0
cycle	P
ra_targ	16.01
dec_targ	-72.032028
ra_nom	16.52815962002
dec_nom	-72.277468936908
roll_nom	303.65123383676
revision	2
ontime	7756.8000072241
livetime	7658.5787349484
ontime4	7756.8000072241
ontime5	7756.8000072241
ontime6	7756.8000072241
ontime7	7756.8000072241
ontime8	7756.8000072241
ontime9	7756.8000072241
l2events	97418



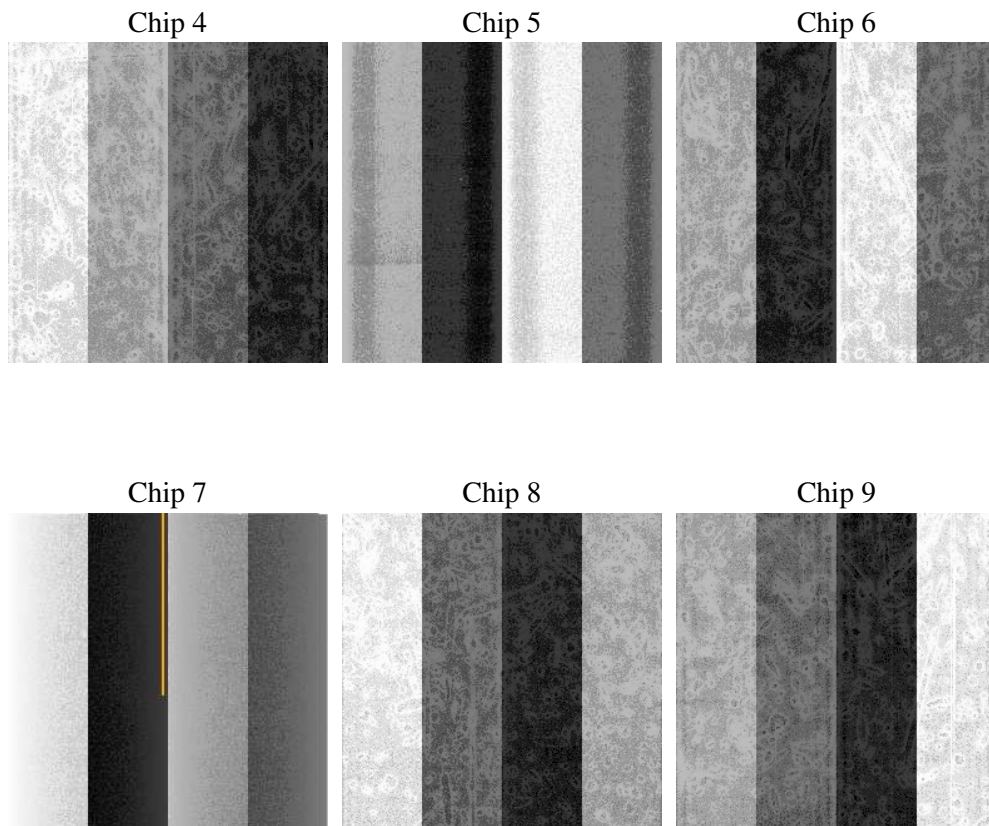
2 OBI

2.1 OBI

2.1.1 Images



2.1.2 Bias



2.1.3 Parameters

obi_num	0
ascdsver	7.6.10
caldbver	3.4.0
date	2007-06-20T00:48:36
revision	2

sched_exp_time	8000.000000
ontime	7756.8000072241
ontime4	7756.8000072241
ontime5	7756.8000072241
ontime6	7756.8000072241
ontime7	7756.8000072241
ontime8	7756.8000072241
ontime9	7756.8000072241
l1events	360725

2.1.4 Events

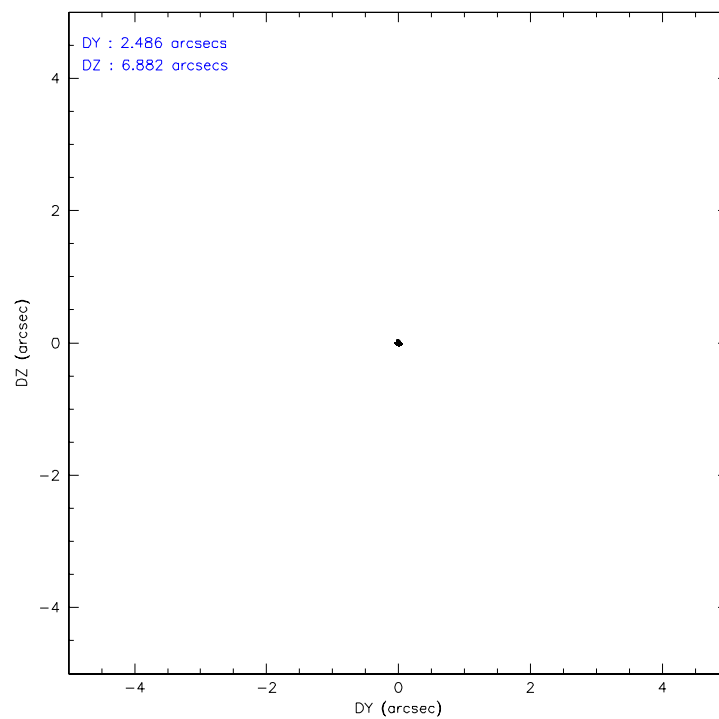
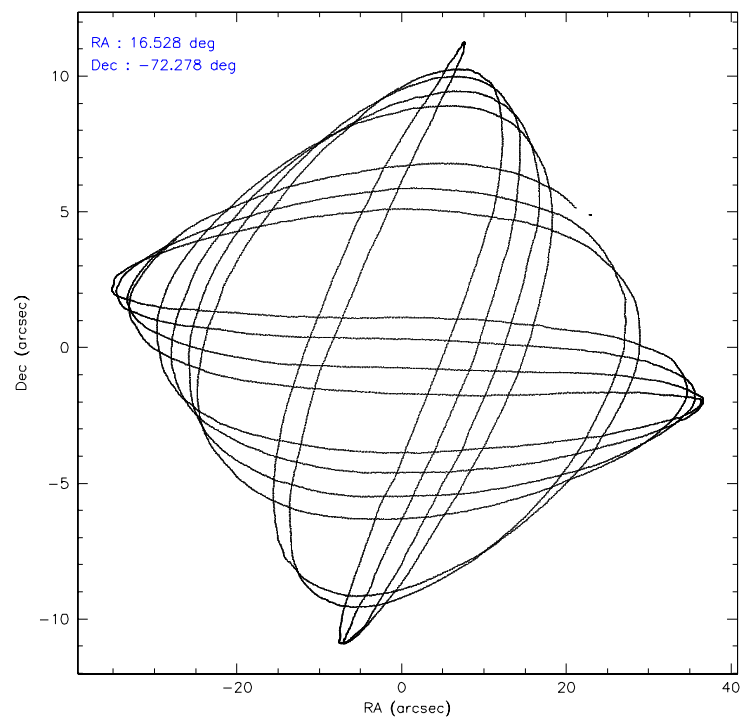
	ccd 4	ccd 5	ccd 6	ccd 7	ccd 8	ccd 9
level 1 events	49247	68845	47057	59653	62201	73722
rejected events	43683	34814	40396	33390	50168	42001
rejected %	88%	50%	85%	55%	80%	56%

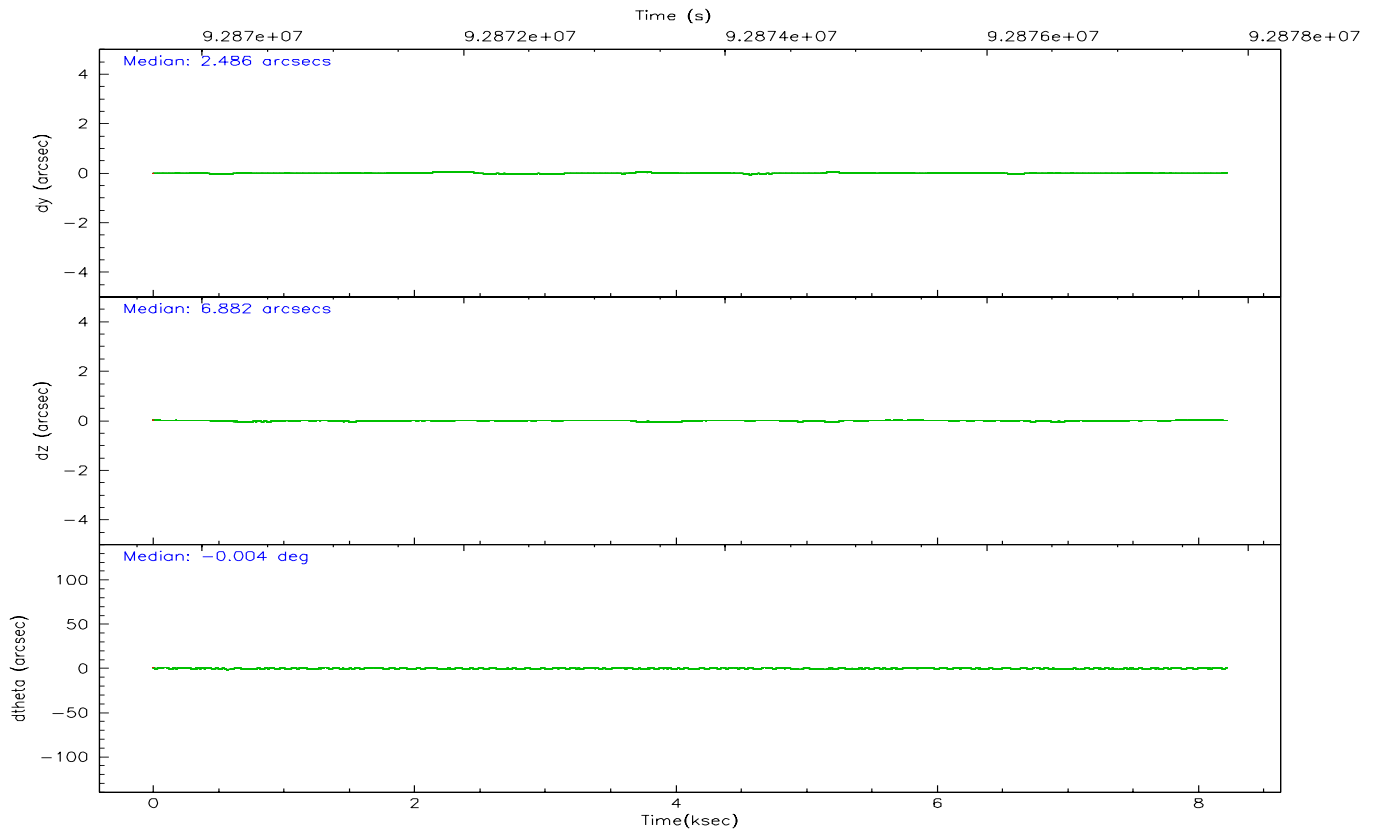
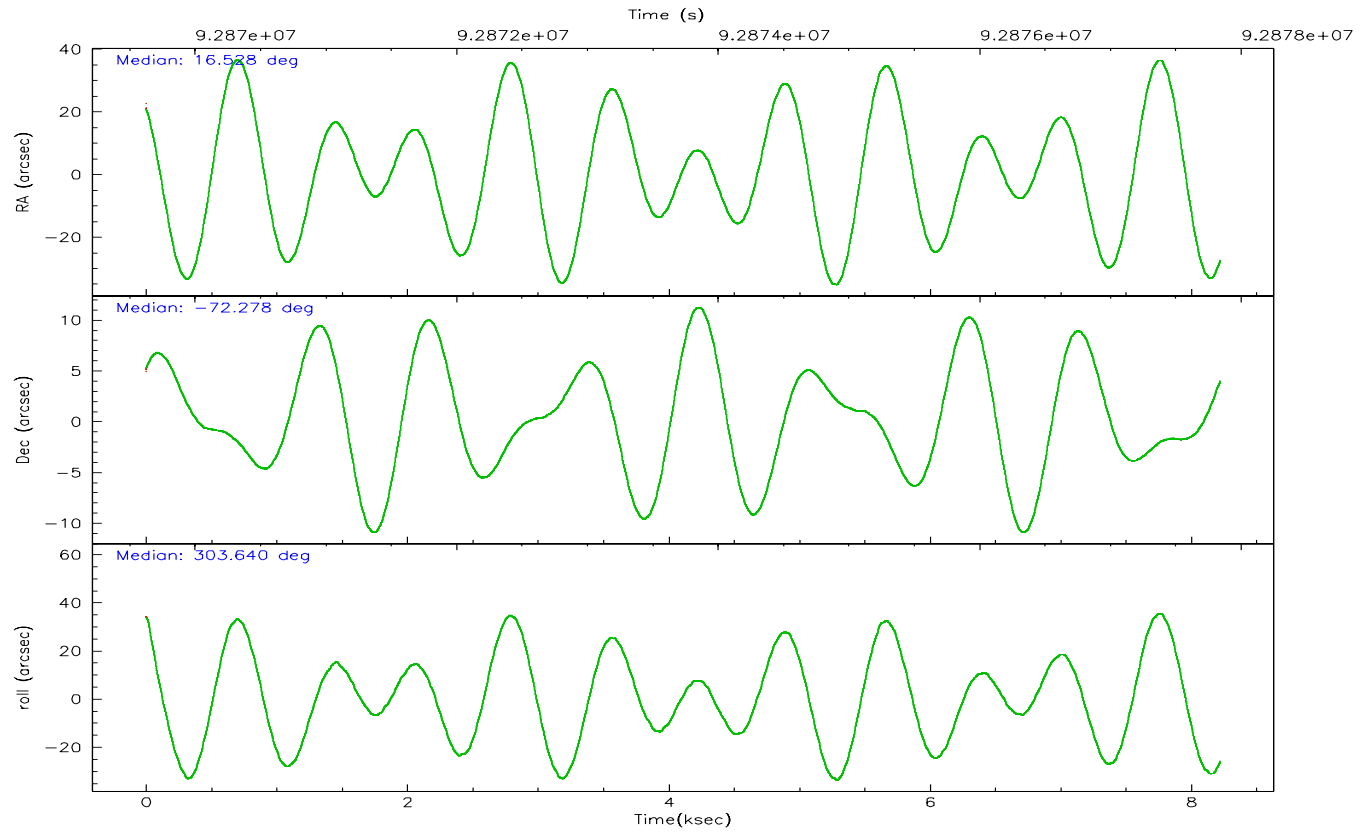
	ccd 4	ccd 5	ccd 6	ccd 7	ccd 8	ccd 9
grade 0 events	2308	4897	3517	2881	4113	26108
	4%	7%	7%	4%	6%	35%
grade 1 events	27	317	26	51	35	150
	0%	0%	0%	0%	0%	0%
grade 2 events	1290	10576	1107	5247	2590	2761
	2%	15%	2%	8%	4%	3%
grade 3 events	482	1466	521	2317	1150	897
	0%	2%	1%	3%	1%	1%
grade 4 events	478	1464	523	2451	1031	839
	0%	2%	1%	4%	1%	1%
grade 5 events	1603	4992	1804	5557	2441	2010
	3%	7%	3%	9%	3%	2%
grade 6 events	1008	15656	995	13383	3151	1146
	2%	22%	2%	22%	5%	1%
grade 7 events	42051	29477	38564	27766	47690	39811
	85%	42%	81%	46%	76%	54%

2.2 Compared Parameters

Parameter	Planned	Actual	Parameter	Planned	Actual
Instrument	ACIS	ACIS	Obspar format version number	6	6
Detector	ACIS-456789	ACIS-456789	Obspar file type	PREDICTED	ACTUAL
Grating	NONE	NONE	Obspar update status	NONE	UPDATED
Data mode	FAINT	FAINT	Number of optional ACIS chips dropped	0	0
Observation mode	POINTING	POINTING	On-chip summing requested	N	N
Pointing RA	16.447579	16.52815962001969	Subarray requested	NONE	NONE
Pointing Dec	-72.265525	-72.27746893690765	Alternating exposures requested	N	N
Pointing Roll	303.417857	303.6512338367592	Primary exposure time	0.000000	3.2
SIM focus pos (mm)	-0.684267	-0.6828225247311905			
SIM defocus (mm)	0	0.001444936568705701			
SIM translation stage pos (mm)	-190.132523	-190.1400660498719			
SIM translation stage offset (mm)	0	0.00754346686406393			
Observation start time	92869818.184000	92869441.96894801			
Observation start date	2000-12-10T21:09:14	2000-12-10T21:04:01			
Observation end time	92877818.184000	92878512.70679399			
Observation end date	2000-12-10T23:22:34	2000-12-10T23:35:12			
Read mode	TIMED	TIMED			

2.3 Aspect



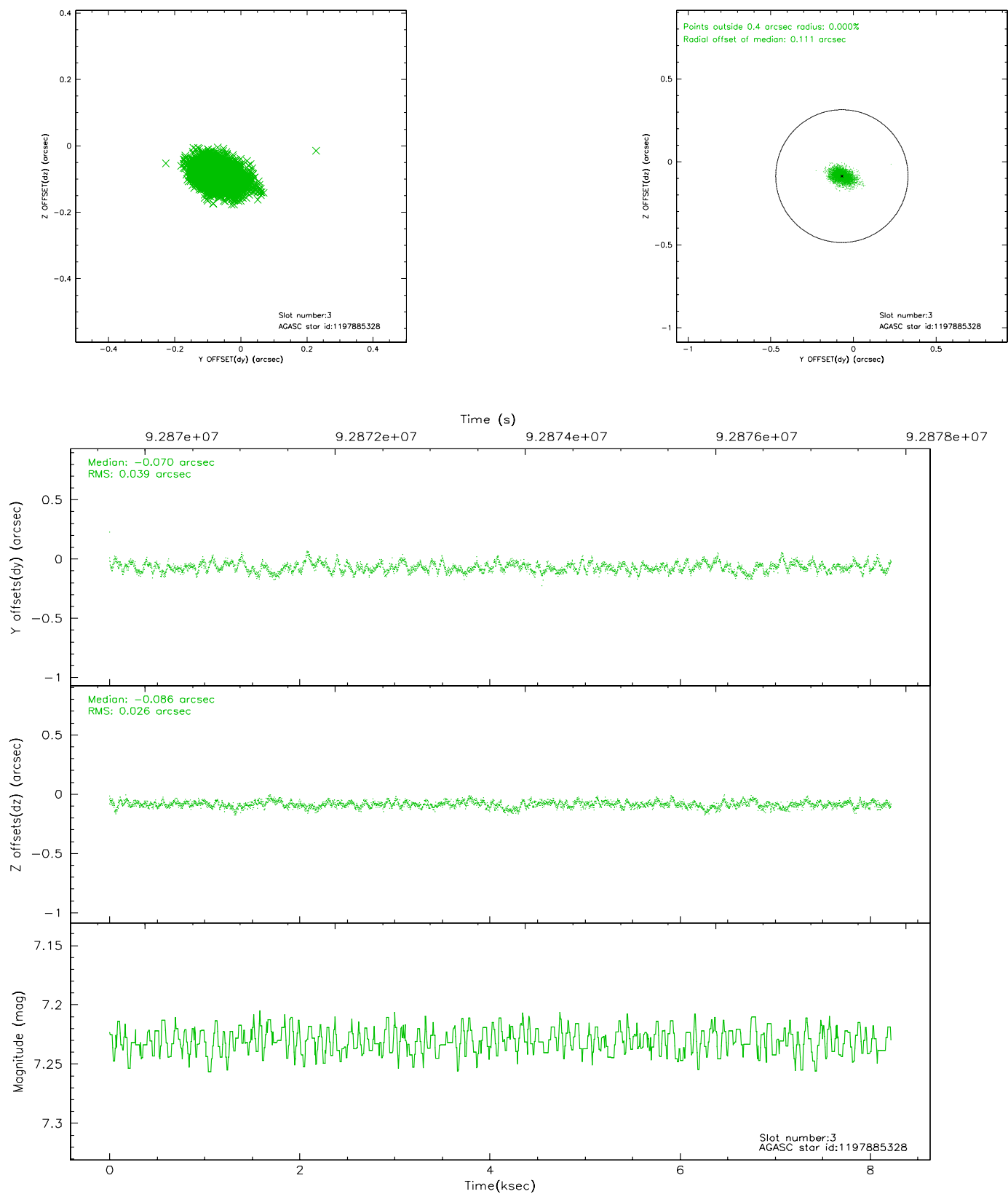


Slot Statistics

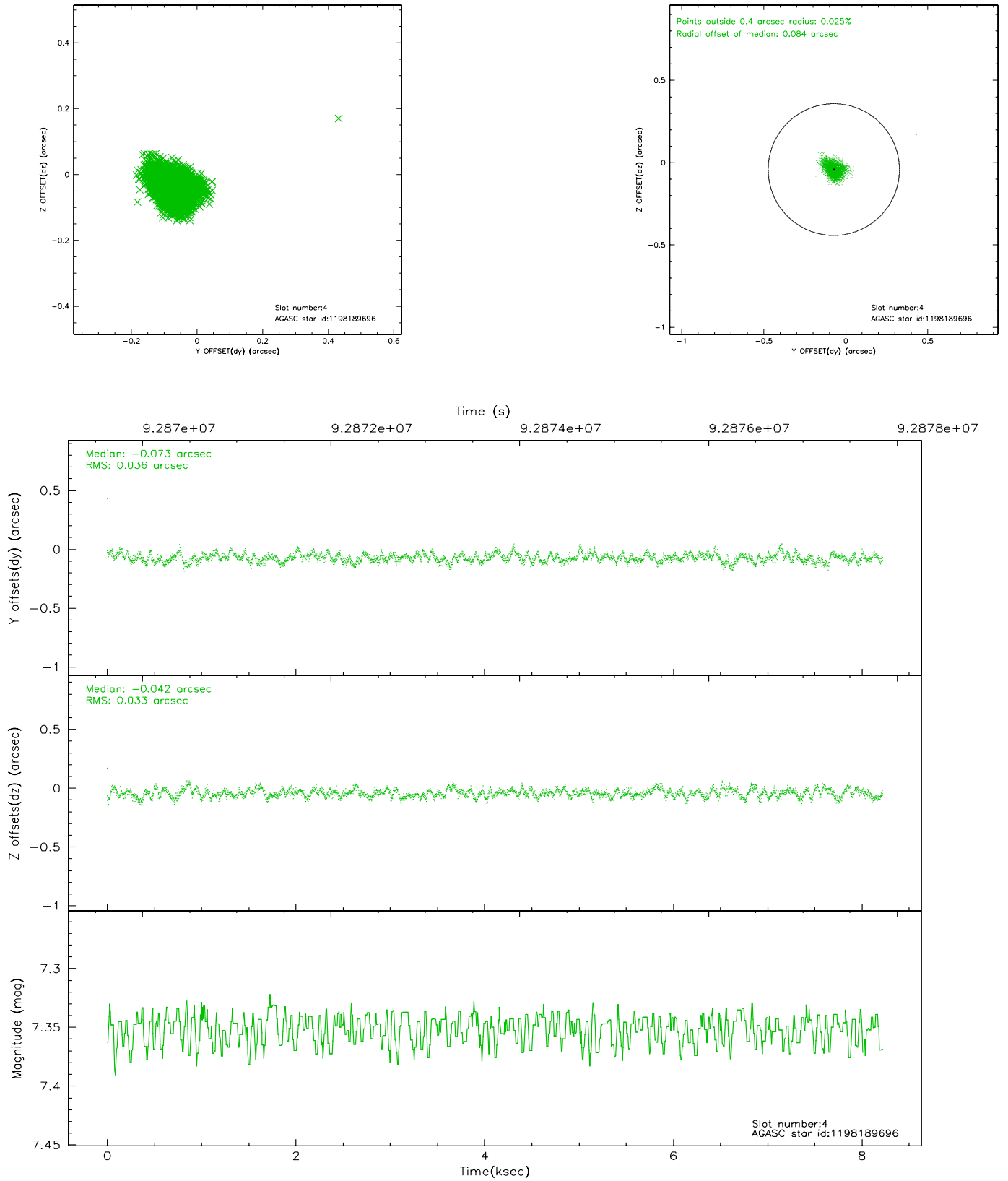
slot	status	id	mag	n_pts	med_dy	med_dz	dr1	dr2	ra	dec	mean_y	mean_z
0	FID	ACIS-S-2	7.12	2004	-0.011	0.019	0.006	0.011	0.000000	0.000000	-755.13	-1728.02
1	FID	ACIS-S-4	7.20	2005	-0.066	0.000	0.005	0.009	0.000000	0.000000	2157.79	179.73
2	FID	ACIS-S-5	7.23	2005	0.045	-0.010	0.006	0.011	0.000000	0.000000	-1807.03	174.18
3	GUIDE	1197885328	7.23	4011	-0.070	-0.086	0.049	0.082	16.283090	-71.733943	-1699.70	899.01
4	GUIDE	1198189696	7.35	4009	-0.073	-0.042	0.052	0.083	15.223750	-72.697522	587.36	-1956.81
5	GUIDE	1197884536	8.50	4009	-0.009	0.025	0.060	0.099	17.160729	-71.835289	-848.35	1518.23
6	GUIDE	1197884712	8.31	4010	0.094	0.032	0.052	0.087	16.087398	-72.252690	-255.45	-304.34
7	GUIDE	1197750640	9.76	4003	0.055	0.076	0.089	0.147	15.758835	-72.088048	-949.73	-286.80

2.4 Star Slots

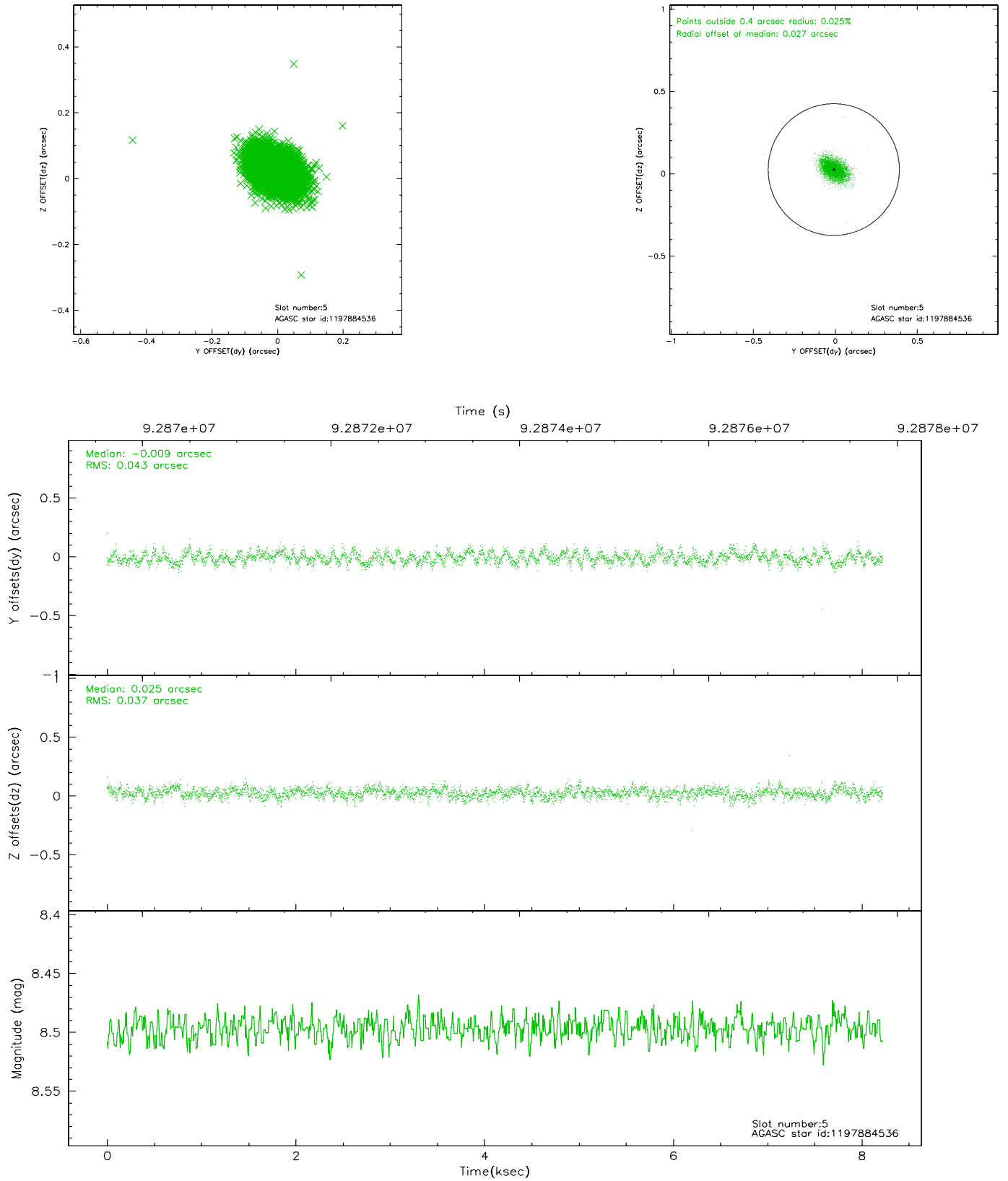
2.4.1 Slot 3



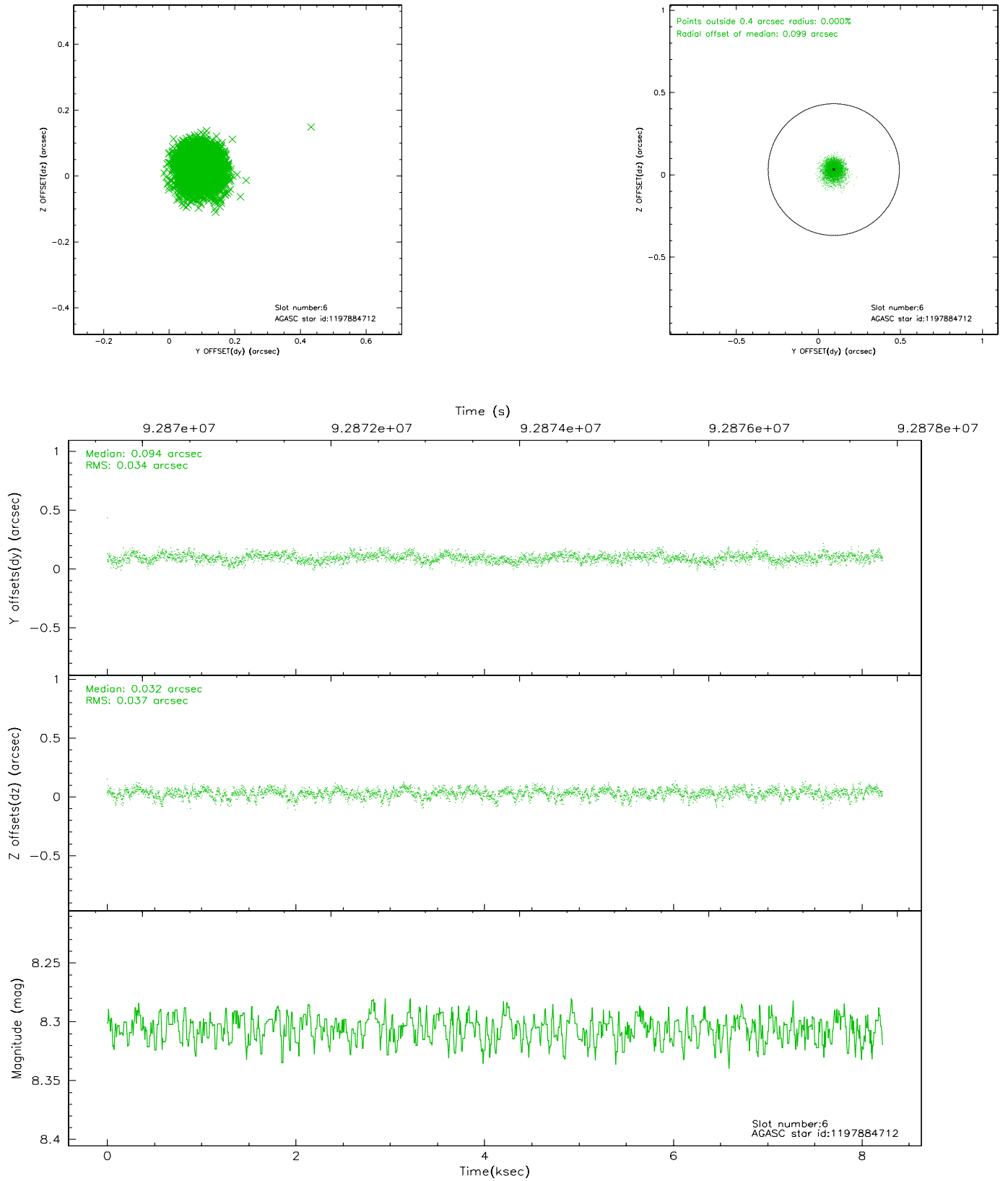
2.4.2 Slot 4



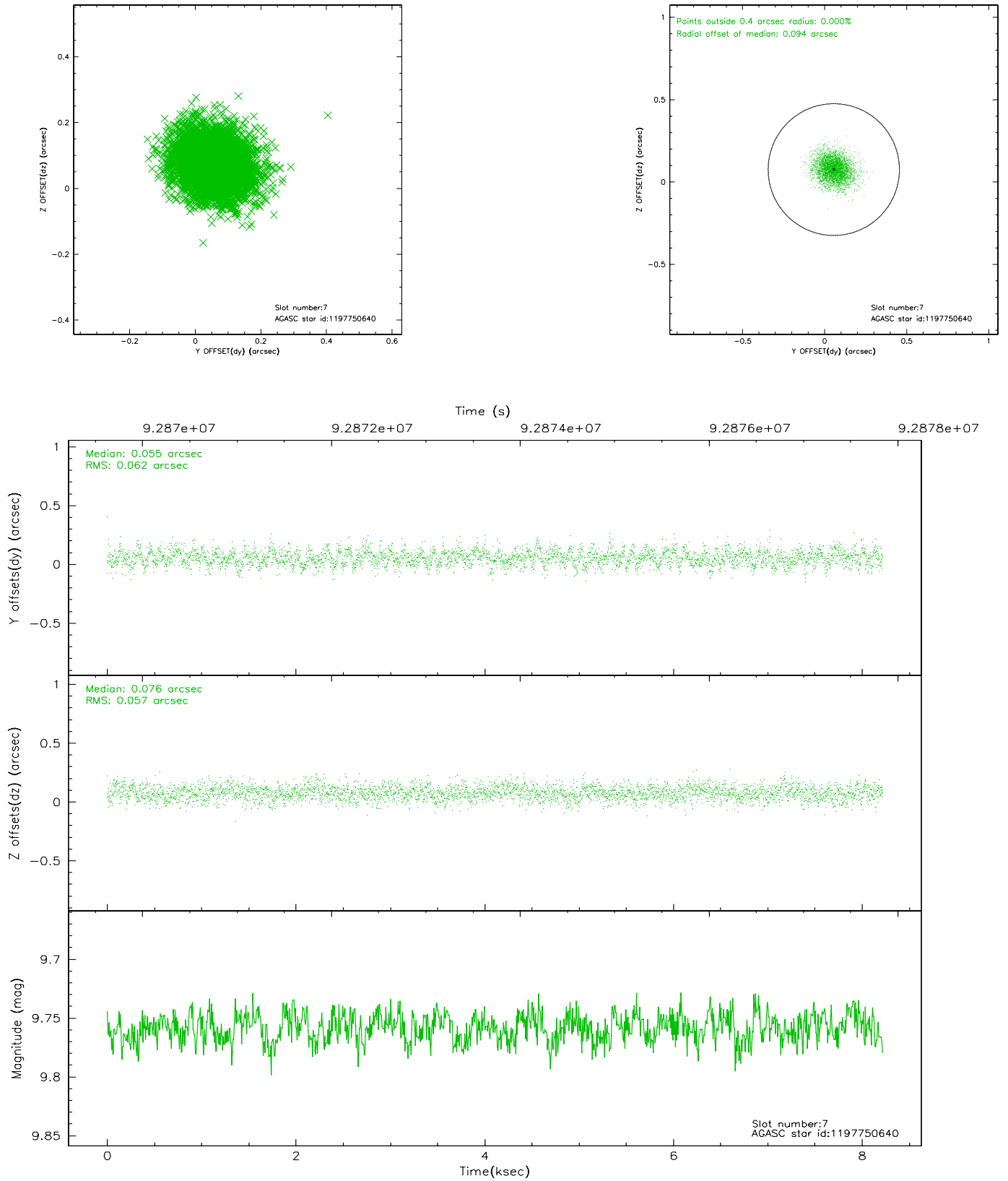
2.4.3 Slot 5



2.4.4 Slot 6

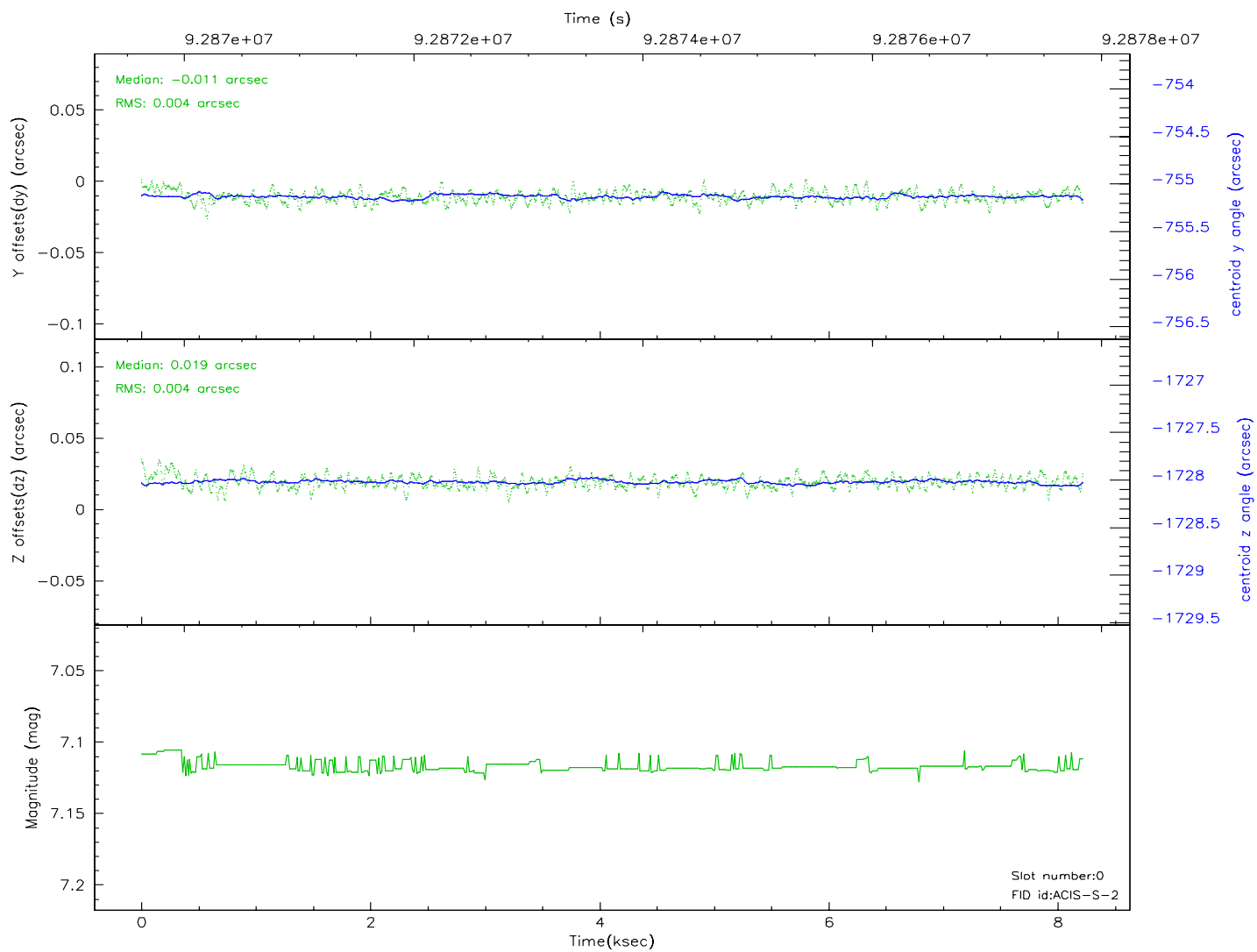
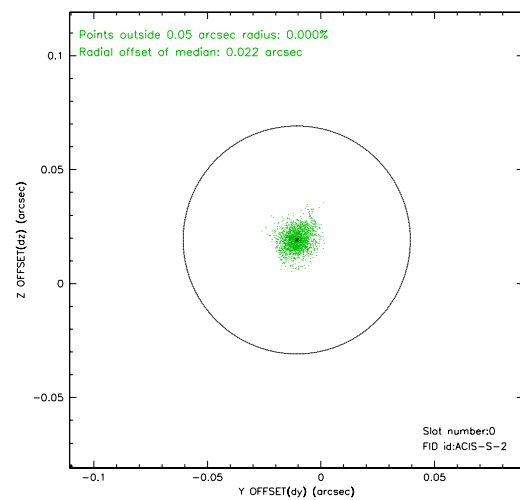
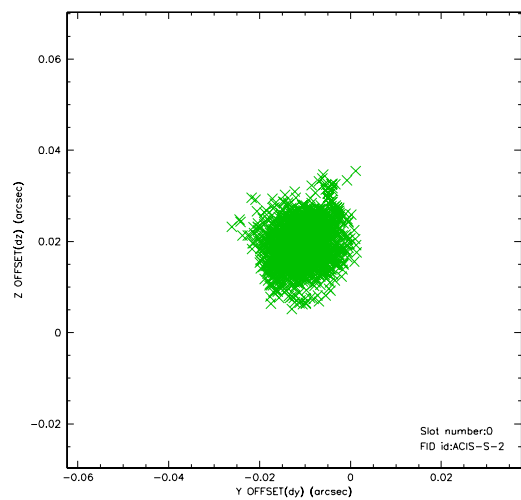


2.4.5 Slot 7

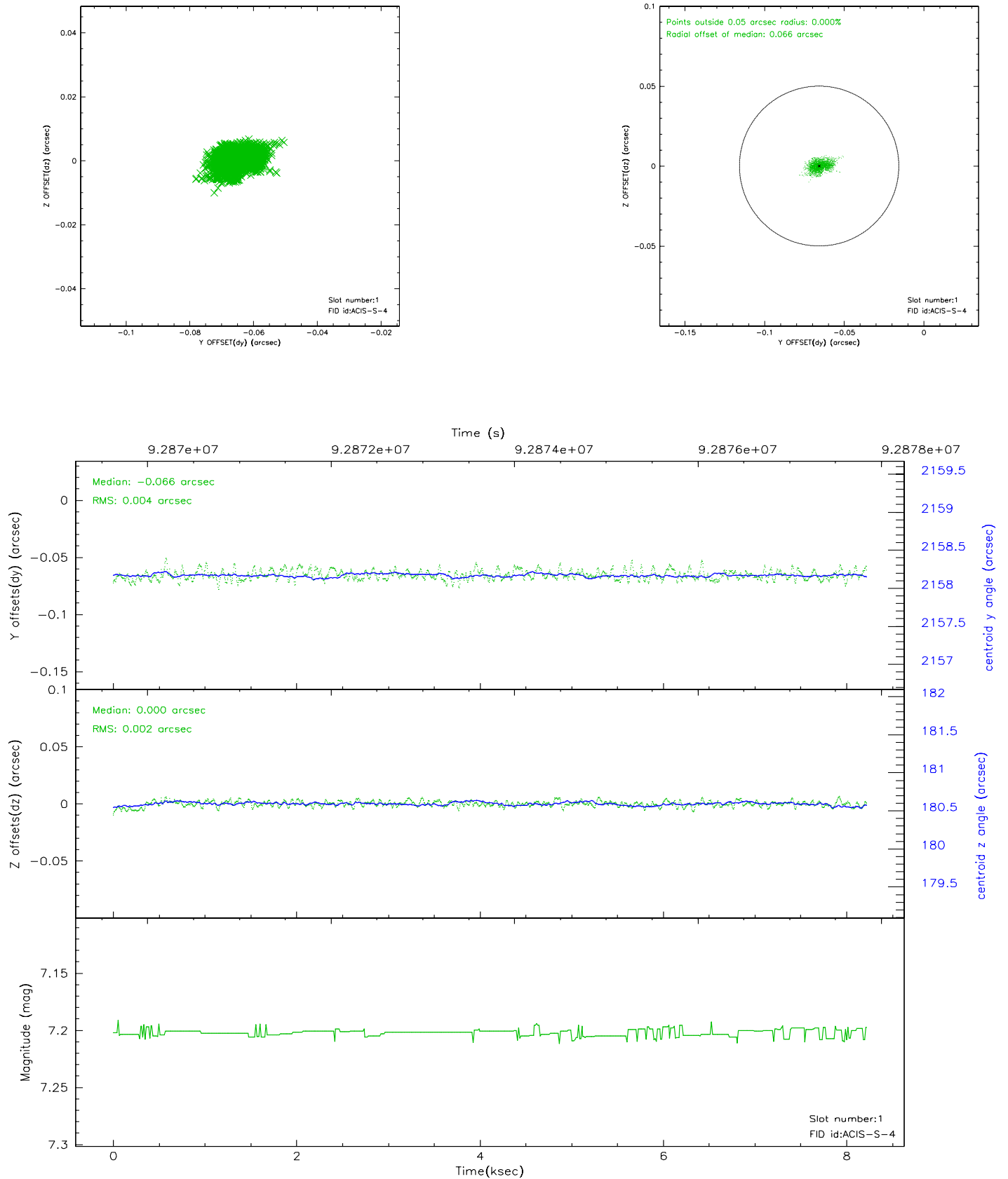


2.5 FID Slots

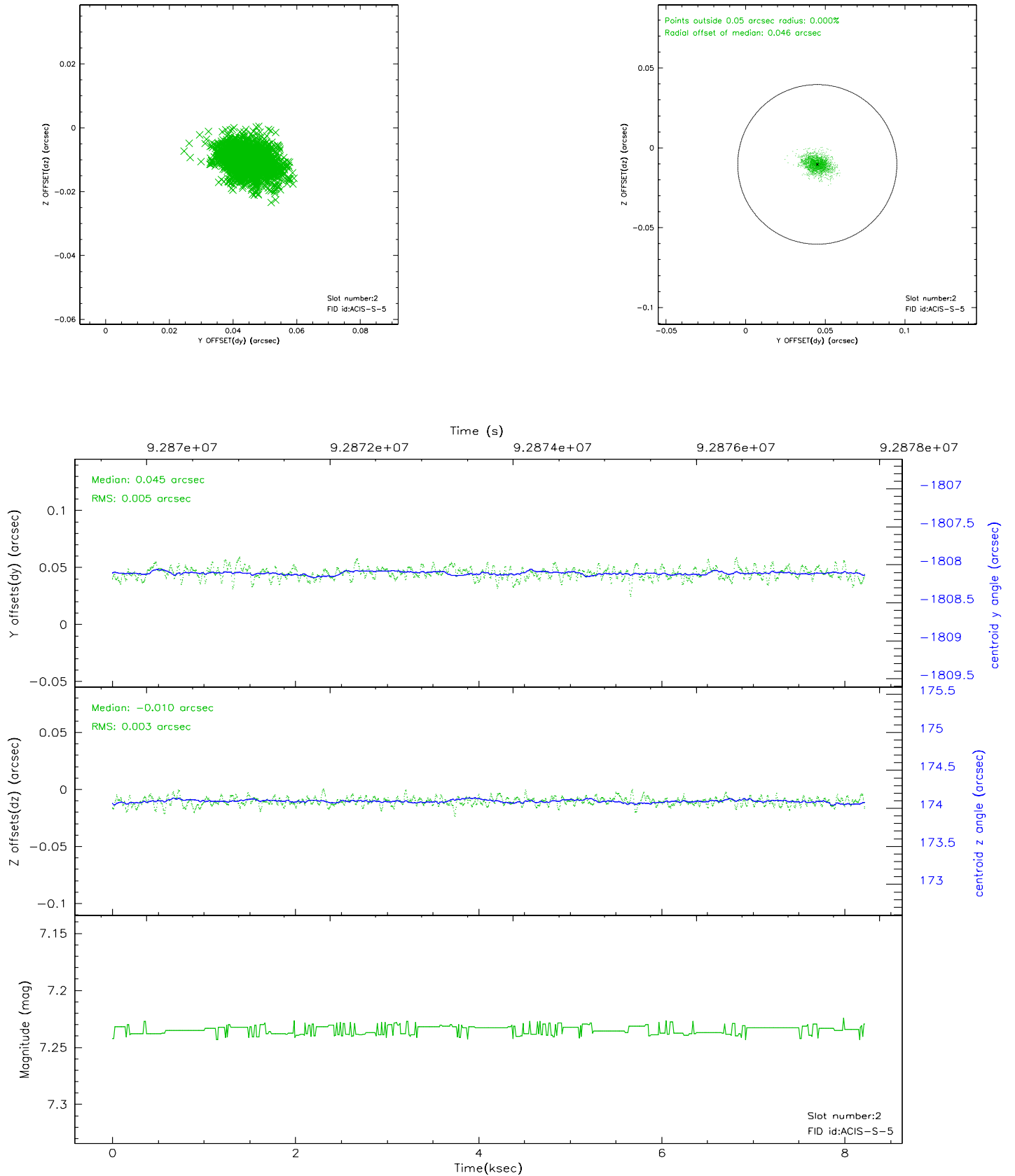
2.5.1 Slot 0



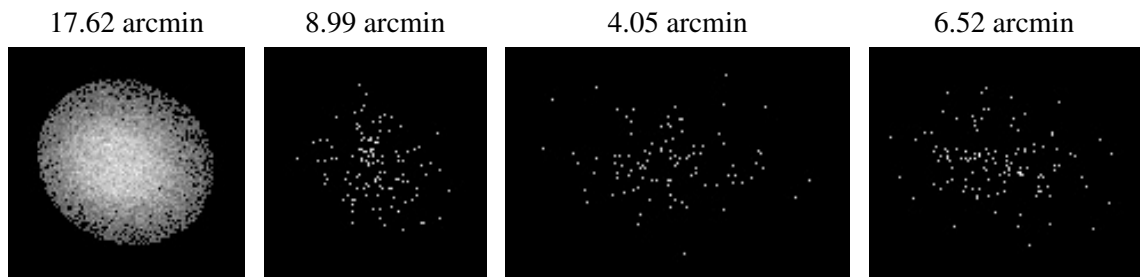
2.5.2 Slot 1



2.5.3 Slot 2



3 Point Sources



A Summary

A.1 Status

V&V Scientist	Beth Sundheim
V&V Date (YYYY-MM-DD)	2007.06.20
V&V Edition	1
V&V Disposition and Status	OK
V&V Charge Time	7.76

A.2 Comments