

# V&V Reference Report

## L2 ASCDS Version : 8.4.5

Observation 11746 - L2 Version 2  
Chandra X-Ray Center

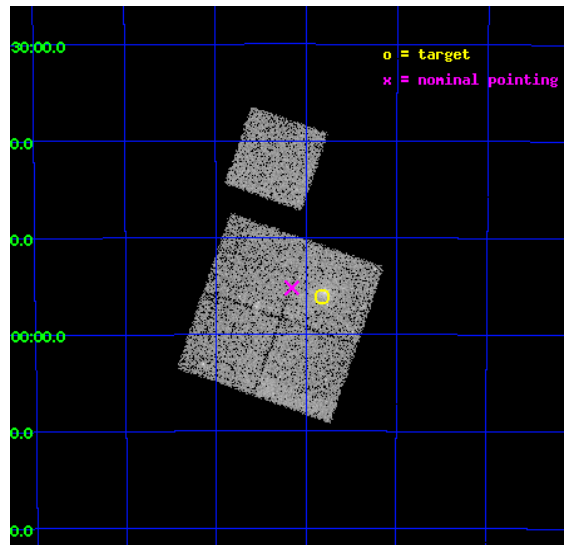
L2 Processing Date : Jun 13 2012

## Contents

<b>1</b>	<b>Front</b>	<b>2</b>
<b>2</b>	<b>OBI</b>	<b>3</b>
2.1	OBI . . . . .	3
2.1.1	Images . . . . .	3
2.1.2	Bias . . . . .	3
2.1.3	Parameters . . . . .	4
2.1.4	Events . . . . .	4
2.2	Compared Parameters . . . . .	5
2.3	Aspect . . . . .	6
2.4	Star Slots . . . . .	9
2.4.1	Slot 3 . . . . .	9
2.4.2	Slot 4 . . . . .	10
2.4.3	Slot 5 . . . . .	11
2.4.4	Slot 6 . . . . .	12
2.4.5	Slot 7 . . . . .	13
2.5	FID Slots . . . . .	14
2.5.1	Slot 0 . . . . .	14
2.5.2	Slot 1 . . . . .	15
2.5.3	Slot 2 . . . . .	16
<b>A</b>	<b>Summary</b>	<b>17</b>
A.1	Status . . . . .	17
A.2	Comments . . . . .	17

# 1 Front

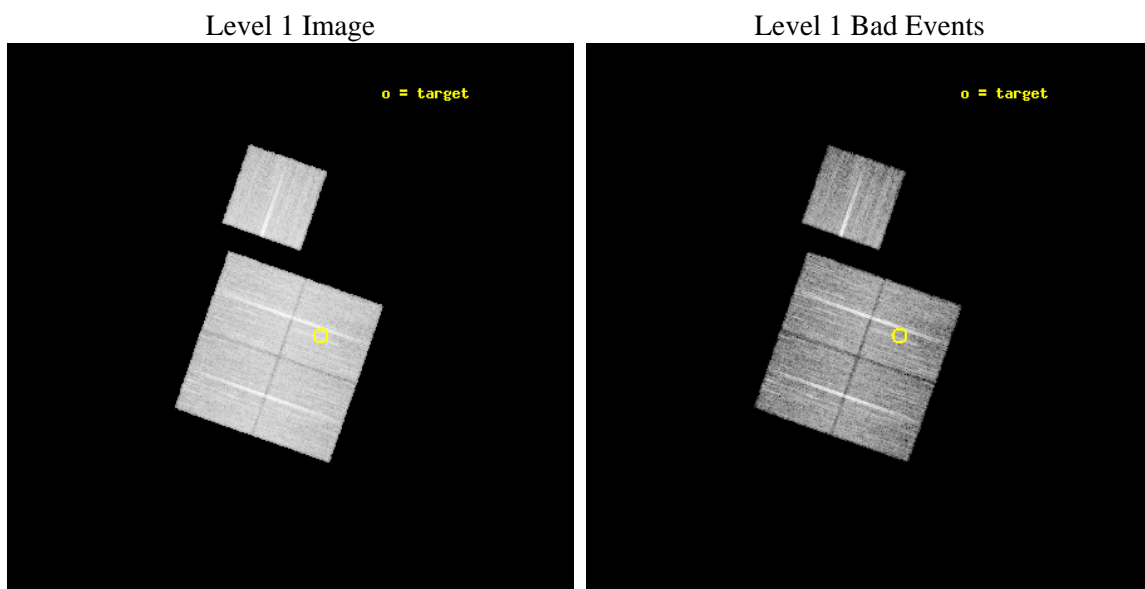
seq_num	800886	Sequence number
obs_id	11746	Observation id
title	Chandra Observations of a Complete Sample of SZE Selected Galaxy Clusters	Proposal title
observer	Dr Joseph Mohr	Principal investigator
object	SPT-CL 2356-5056	Source name
dtcycle	0	&#160
cycle	P	events from which exps? Prim/Second/Both
ra_targ	358.957083	Observer's specified target RA [deg]
dec_targ	-50.936	Observer's specified target Dec [deg]
ra_nom	359.03960897683	Nominal RA [deg]
dec_nom	-50.919911461798	Nominal Dec [deg]
roll_nom	19.23502622836	Nominal Roll [deg]
revision	2	Processing version of data
ontime	11652.859089434	Sum of GTIs [s]
livetime	11500.605906721	Livetime [s]
ontime0	11652.859109282	Sum of GTIs [s]
ontime1	11652.859099329	Sum of GTIs [s]
ontime2	11656.000089645	Sum of GTIs [s]
ontime3	11652.859089434	Sum of GTIs [s]
ontime6	11656.000089645	Sum of GTIs [s]
l2events	46292	Number of level 2 events



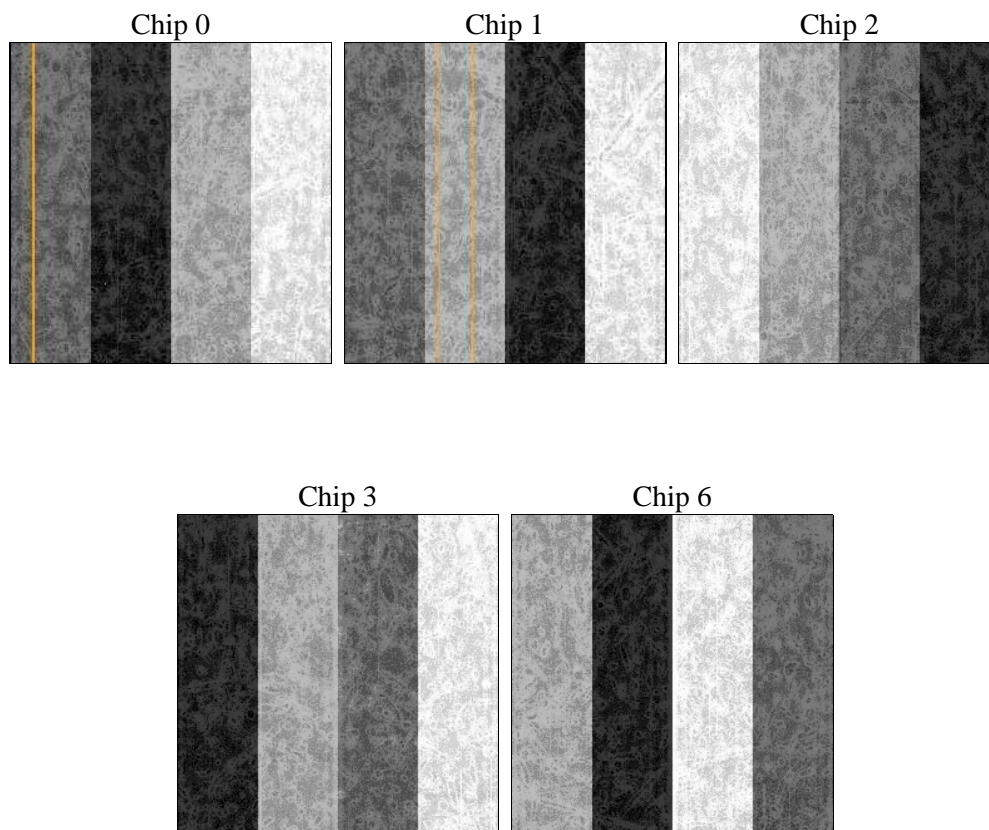
## 2 OBI

### 2.1 OBI

#### 2.1.1 Images



#### 2.1.2 Bias



### 2.1.3 Parameters

obi_num	0	Obi number	sched_exp_time	11500.000000	[s] Scheduled observation exposure time
ascdsver	8.4.5	Processing system revision	ontime	11652.859089434	Sum of GTIs [s]
caldsver	4.4.10	&#160	ontime0	11652.859109282	Sum of GTIs [s]
date	2012-06-13T02:58:53	Date and time of file creation	ontime1	11652.859099329	Sum of GTIs [s]
revision	2	Processing version of data	ontime2	11656.000089645	Sum of GTIs [s]
			ontime3	11652.859089434	Sum of GTIs [s]
			ontime6	11656.000089645	Sum of GTIs [s]
			l1events	502352	Number of level 1 events

### 2.1.4 Events

	ccd 0	ccd 1	ccd 2	ccd 3	ccd 6
level 1 events	95072	95281	108523	102422	101054
rejected events	84620	83392	97725	90835	90522
rejected %	89%	87%	90%	88%	89%

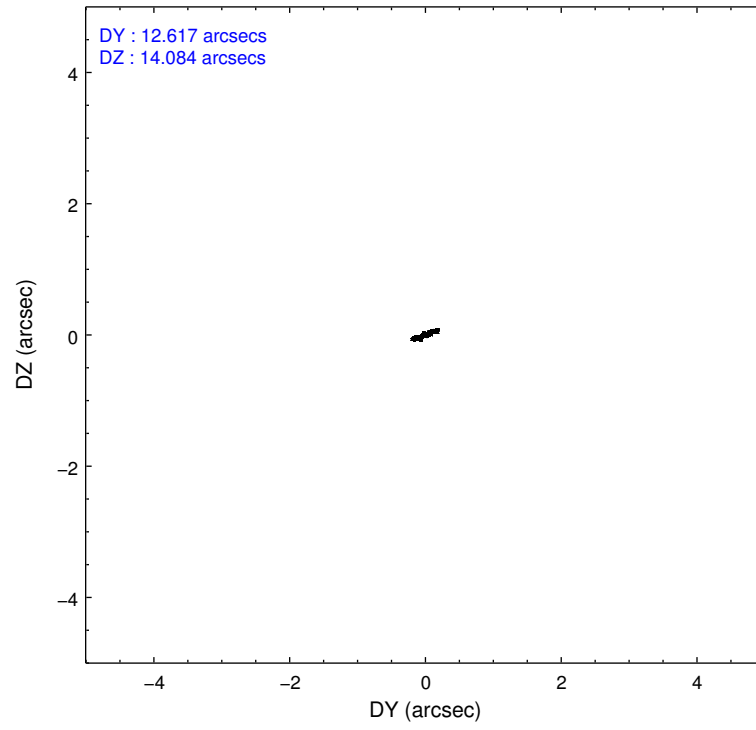
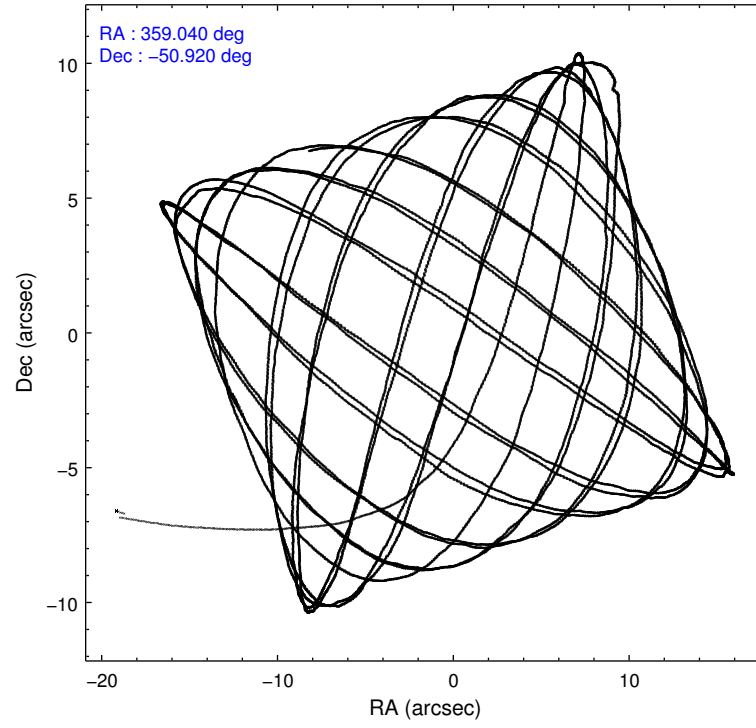
	ccd 0	ccd 1	ccd 2	ccd 3	ccd 6
grade 0 events	3849	4352	4080	4878	3655
	4%	4%	3%	4%	3%
grade 1 events	57	67	79	77	52
	0%	0%	0%	0%	0%
grade 2 events	2527	2799	2554	2458	2346
	2%	2%	2%	2%	2%
grade 3 events	1121	1302	1139	1157	1183
	1%	1%	1%	1%	1%
grade 4 events	1092	1218	1130	1141	1153
	1%	1%	1%	1%	1%
grade 5 events	3602	3988	3438	4283	4176
	3%	4%	3%	4%	4%
grade 6 events	2002	2351	2013	2093	2321
	2%	2%	1%	2%	2%
grade 7 events	80822	79204	94090	86335	86168
	85%	83%	86%	84%	85%

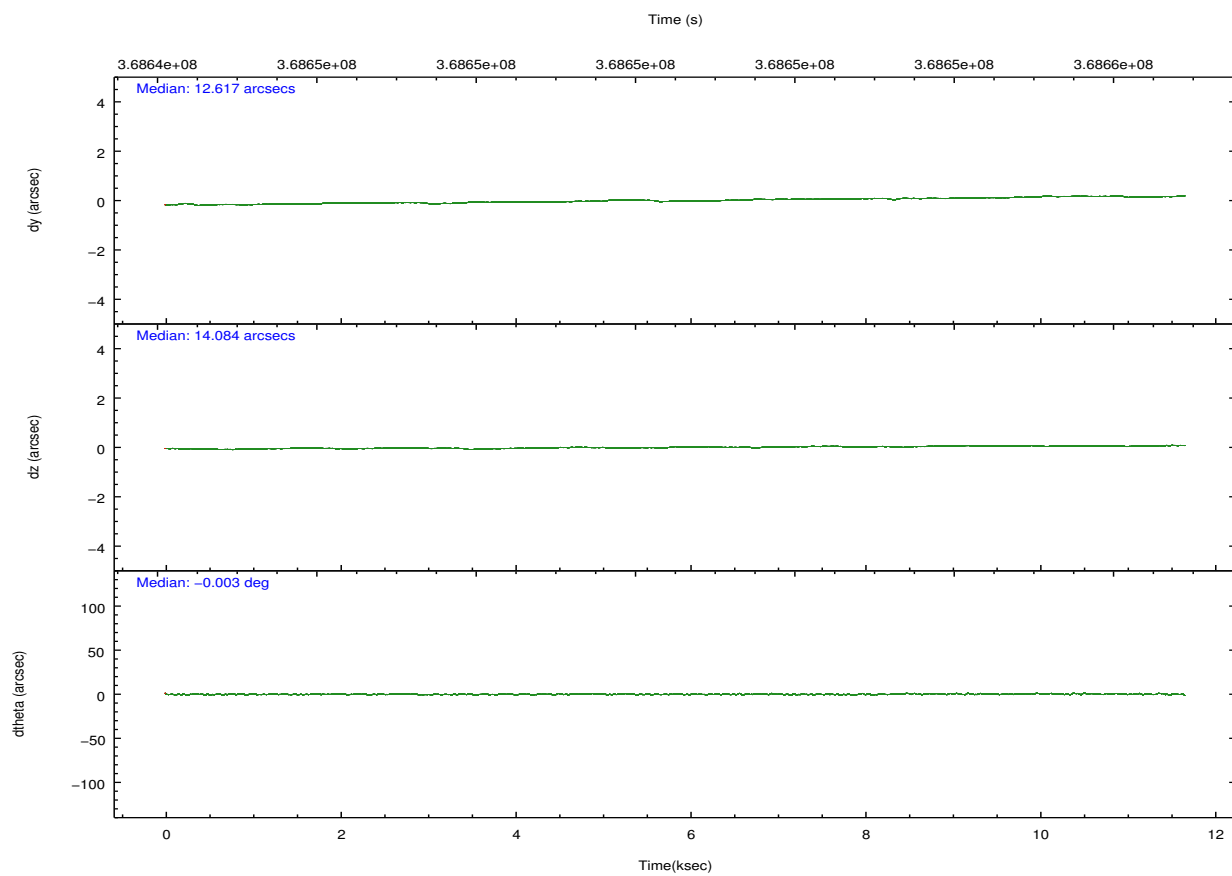
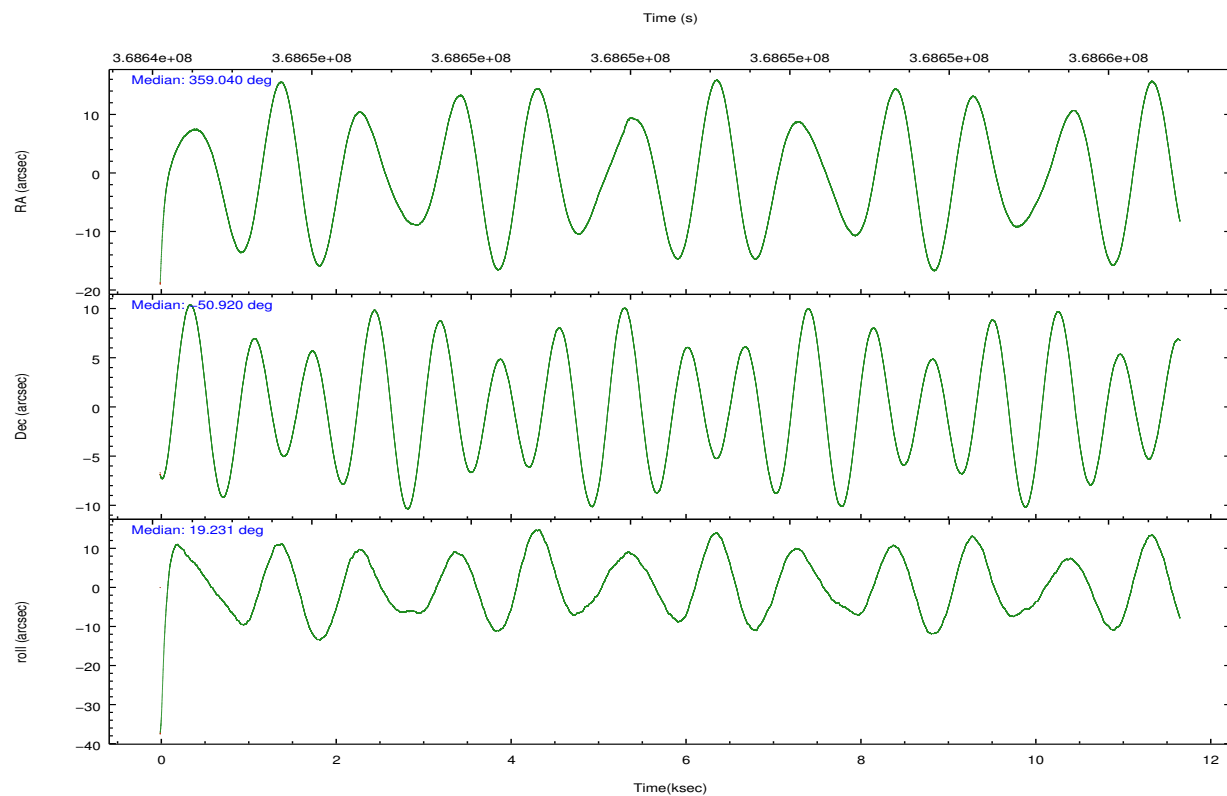


## 2.2 Compared Parameters

Parameter	Planned	Actual	Parameter	Planned	Actual
Instrument	ACIS	ACIS	Obspar format version number	7	7
Detector	ACIS-01236	ACIS-01236	Obspar file type	PREDICTED	ACTUAL
Grating	NONE	NONE	Obspar update status	NONE	UPDATED
Data mode	VFAINT	VFAINT	CCD I0 on	Y	Y
Observation mode	POINTING	POINTING	CCD I1 on	Y	Y
[deg] Pointing RA	359.011195	359.0396089768264	CCD I2 on	Y	Y
[deg] Pointing Dec	-50.940830	-50.91991146179772	CCD I3 on	Y	Y
[deg] Pointing Roll	19.004307	19.23502622835966	CCD S0 on	N	N
[mm] SIM focus pos	-0.782348	-0.7809083437167272	CCD S1 on	N	N
[mm] SIM defocus	0	0.001439871863259334	CCD S2 on	O1	Y
[mm] SIM translation stage pos	-225.840463	-225.8433433320239	CCD S3 on	N	N
[mm] SIM translation stage offset	-7.752	-7.749109670905796	CCD S4 on	N	N
[s] Observation start time (MET)	368644820.184000	368643767.90558	CCD S5 on	N	N
Observation start date	2009-09-06T17:19:14	2009-09-06T17:02:47	Number of optional ACIS chips dropped	0	0
[s] Observation end time (MET)	368656320.184000	368657121.09375	On-chip summing requested	N	N
Observation end date	2009-09-06T20:30:54	2009-09-06T20:45:21	Subarray requested	NONE	NONE
Read mode	TIMED	TIMED	Alternating exposures requested	N	N
			[s] Primary exposure time	0.000000	3.1

## 2.3 Aspect



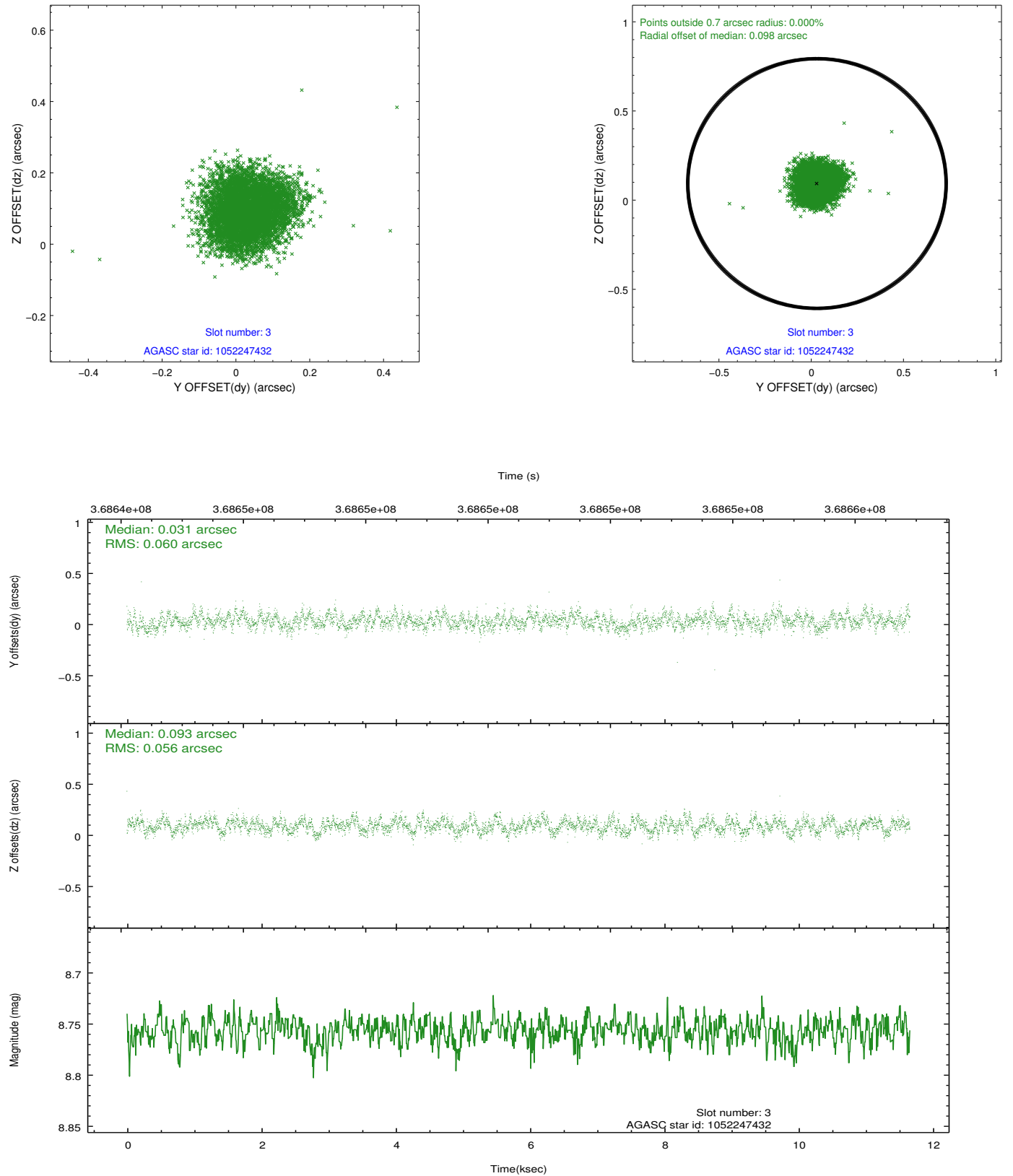


### Slot Statistics

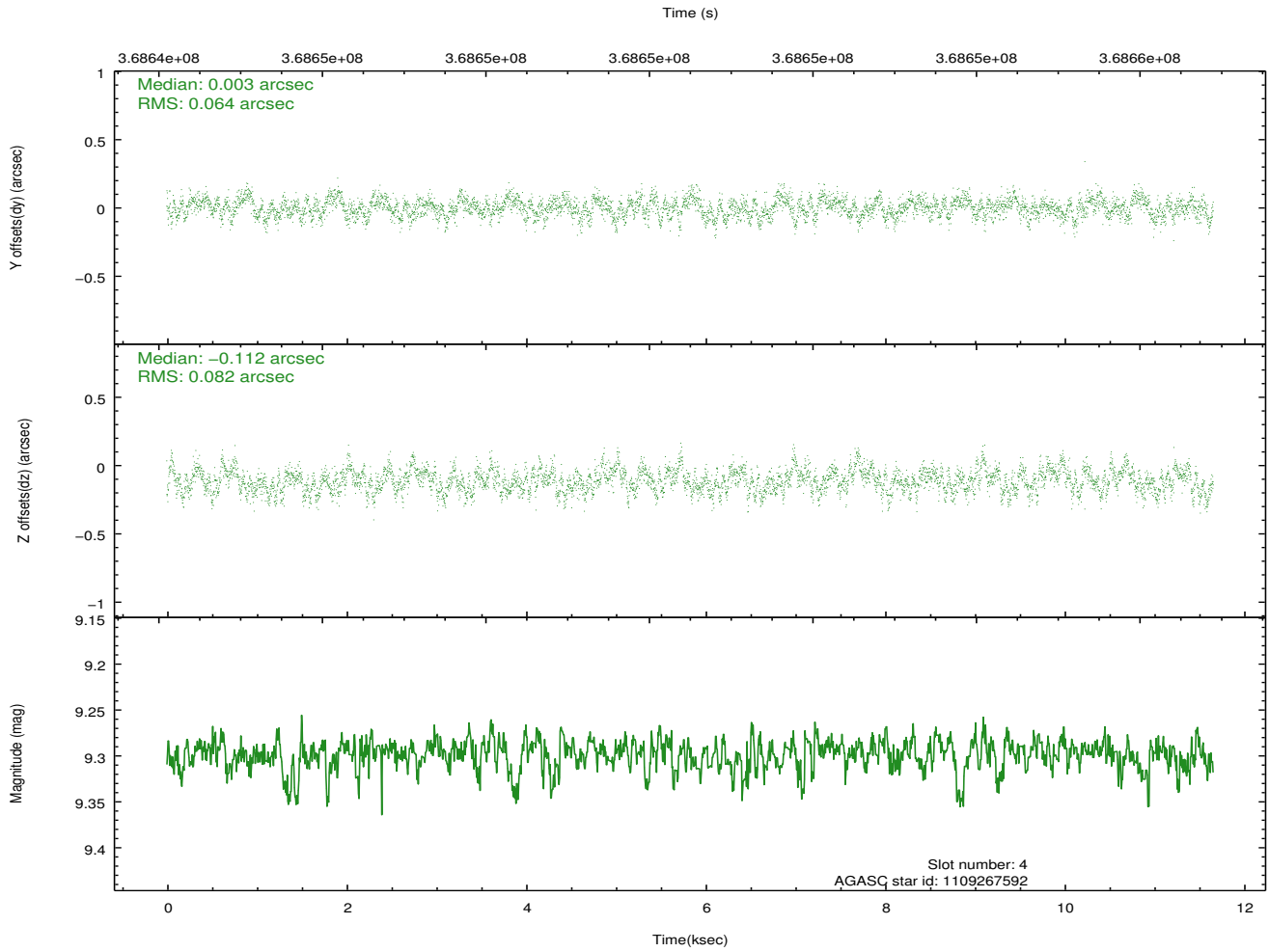
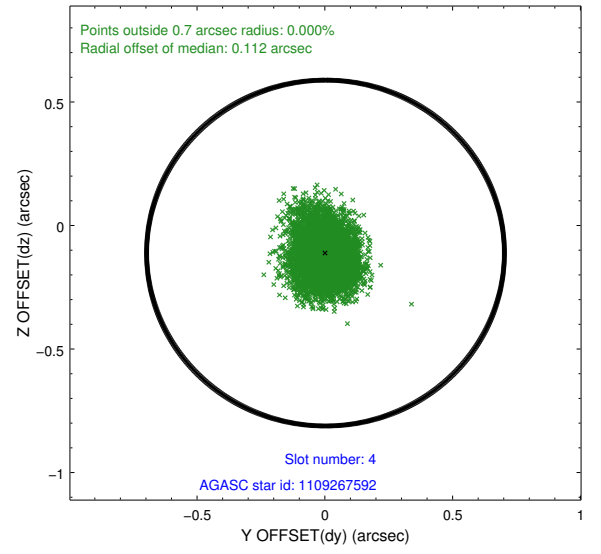
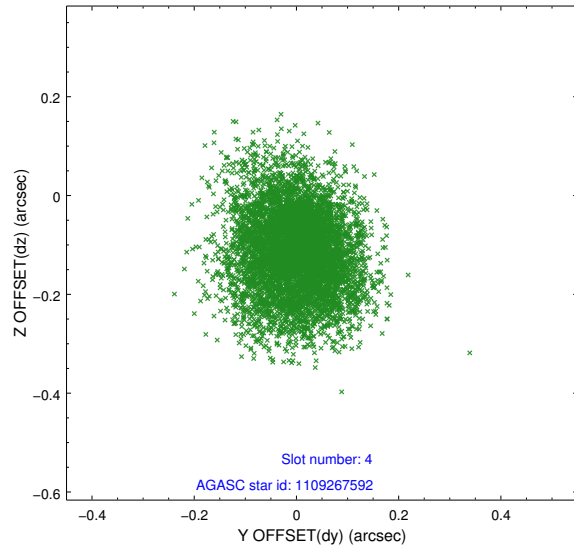
slot	status	id	mag	n_pts	med_dy	med_dz	dr1	dr2	ra	dec	mean_y	mean_z
0	FID	ACIS-I-1	7.03	2845	0.089	-0.078	0.007	0.013	0.000000	0.000000	926.87	-996.80
1	FID	ACIS-I-5	7.01	2845	-0.242	0.075	0.008	0.014	0.000000	0.000000	-1821.36	900.52
2	FID	ACIS-I-6	7.04	2845	0.062	0.073	0.008	0.014	0.000000	0.000000	391.87	1545.56
3	GUIDE	1052247432	8.76	5685	0.031	0.093	0.088	0.138	0.036415	-50.866976	2284.18	-521.98
4	GUIDE	1109267592	9.30	5685	0.003	-0.112	0.110	0.181	359.147847	-50.303746	1042.97	2064.74
5	GUIDE	1109269104	7.18	5688	-0.102	0.055	0.068	0.105	359.942074	-50.999251	1921.27	-898.12
6	GUIDE	1109269904	8.40	5686	0.063	-0.007	0.062	0.099	359.567113	-50.130971	2161.95	2333.71
7	GUIDE	1109270368	8.54	5685	0.006	-0.032	0.084	0.141	358.906310	-51.374260	-729.42	-1399.67

## 2.4 Star Slots

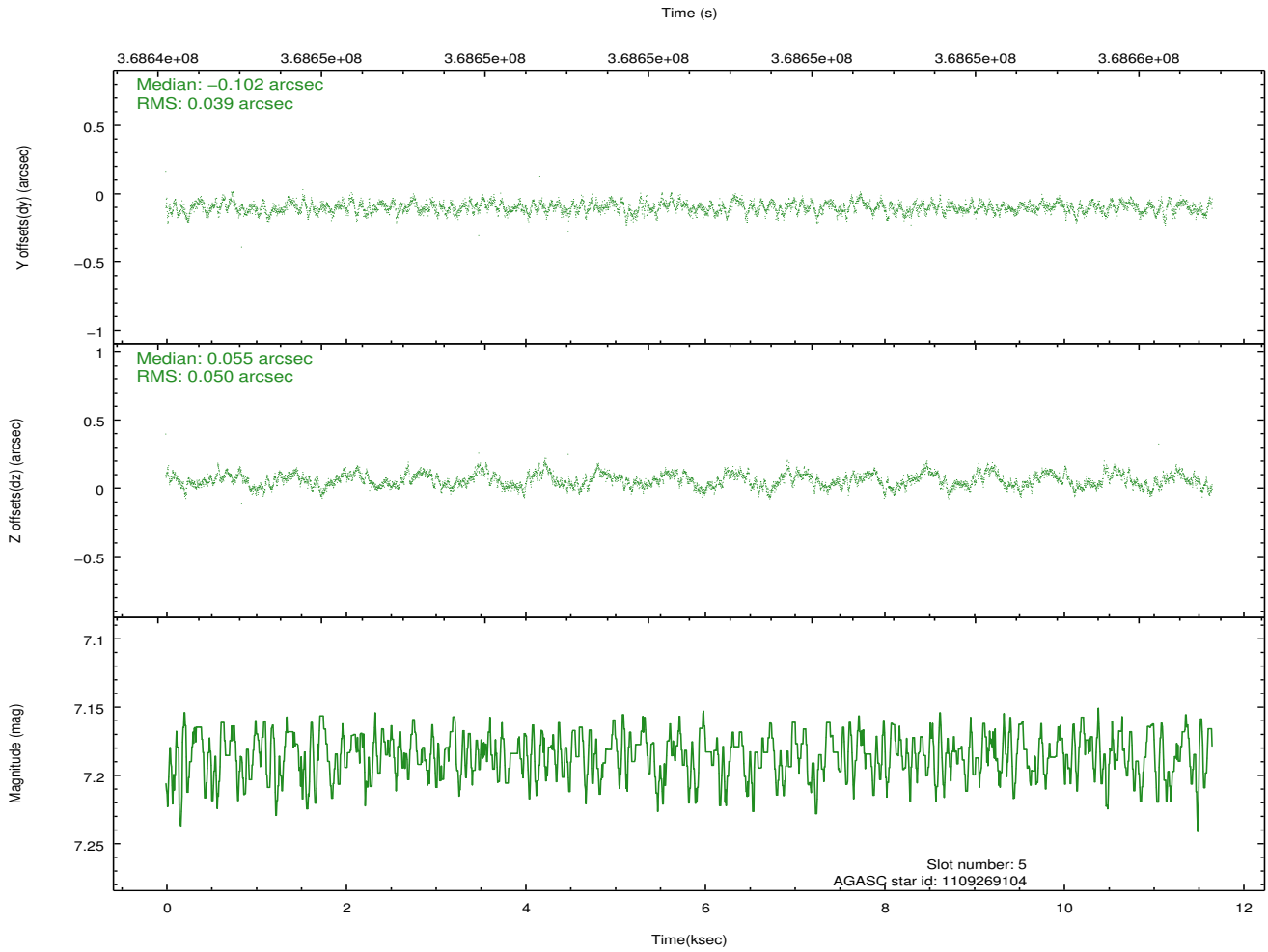
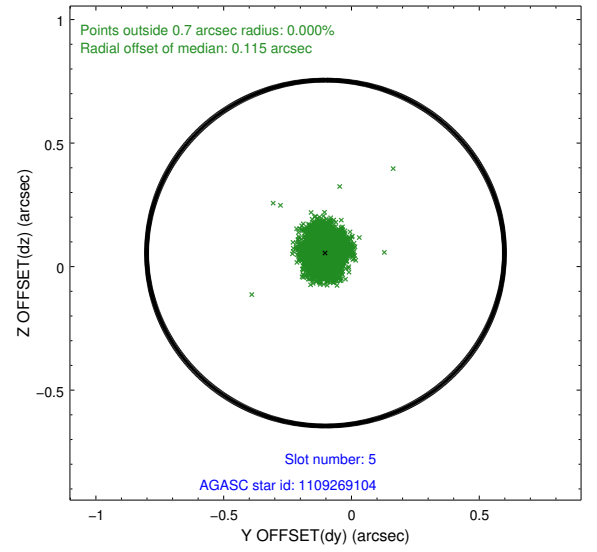
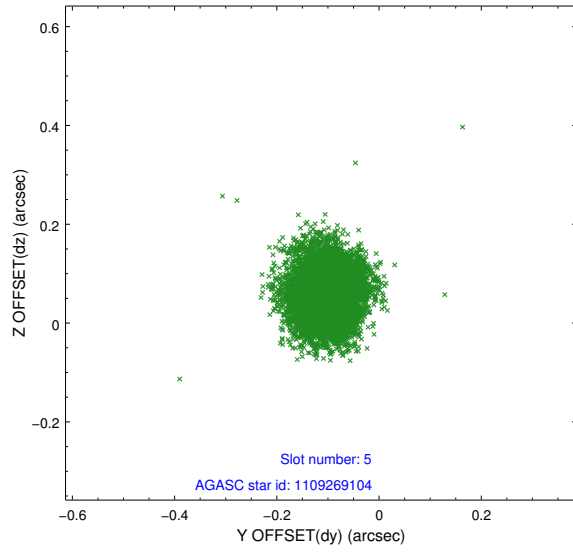
### 2.4.1 Slot 3



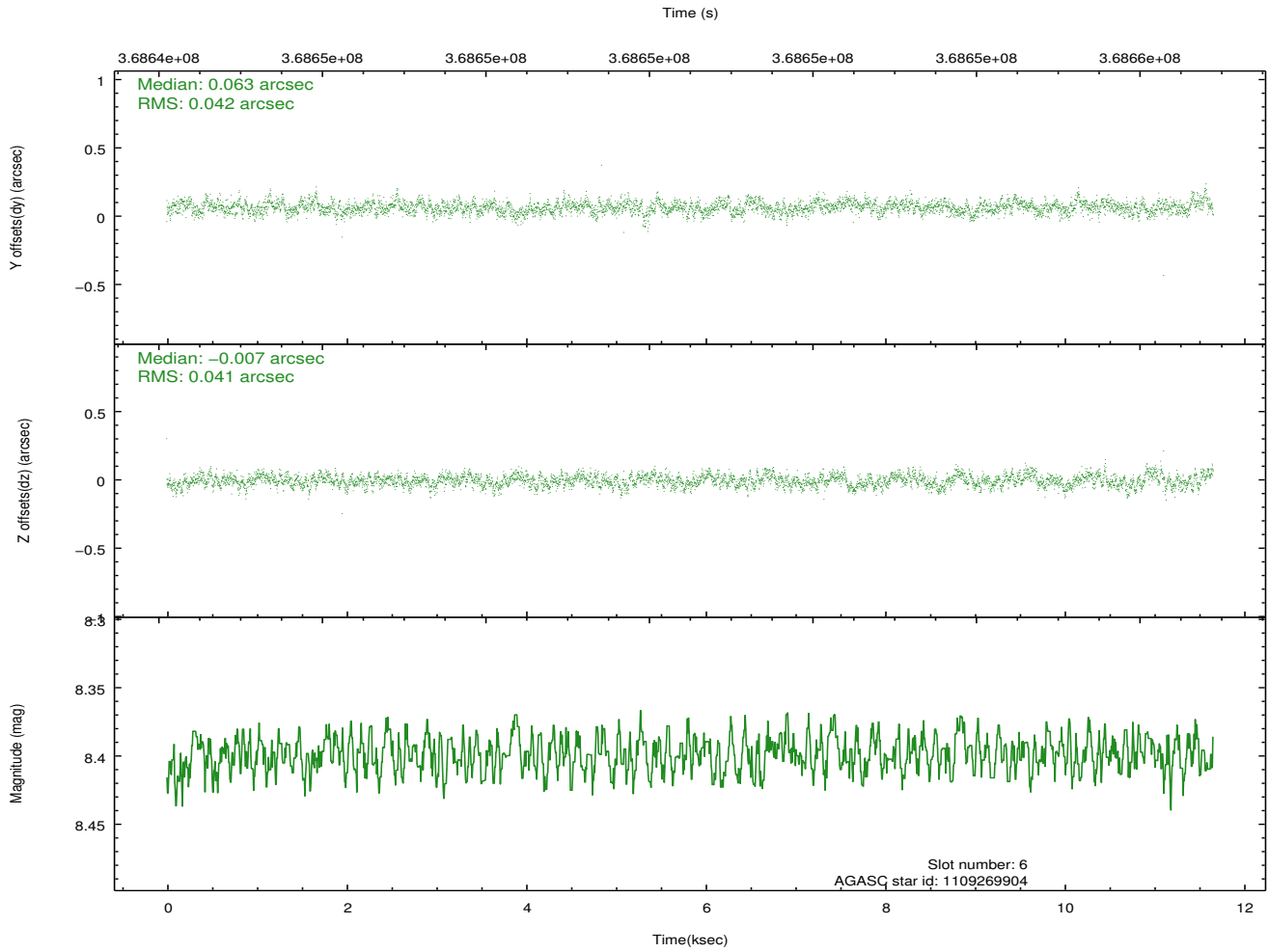
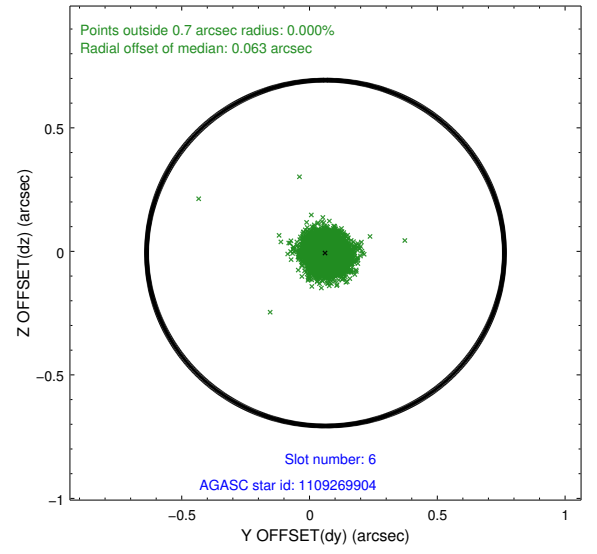
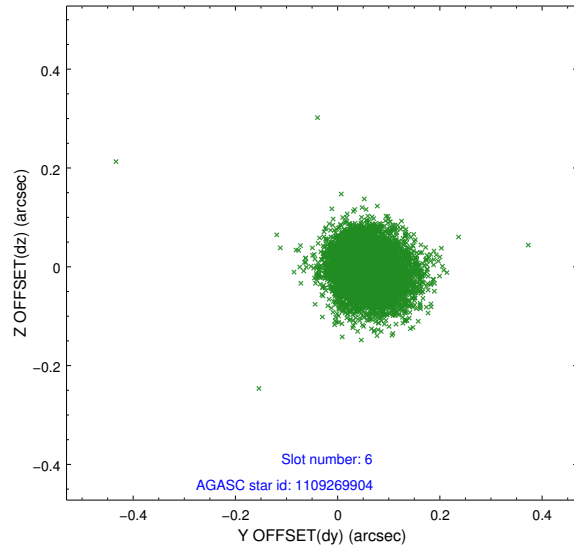
## 2.4.2 Slot 4



### 2.4.3 Slot 5

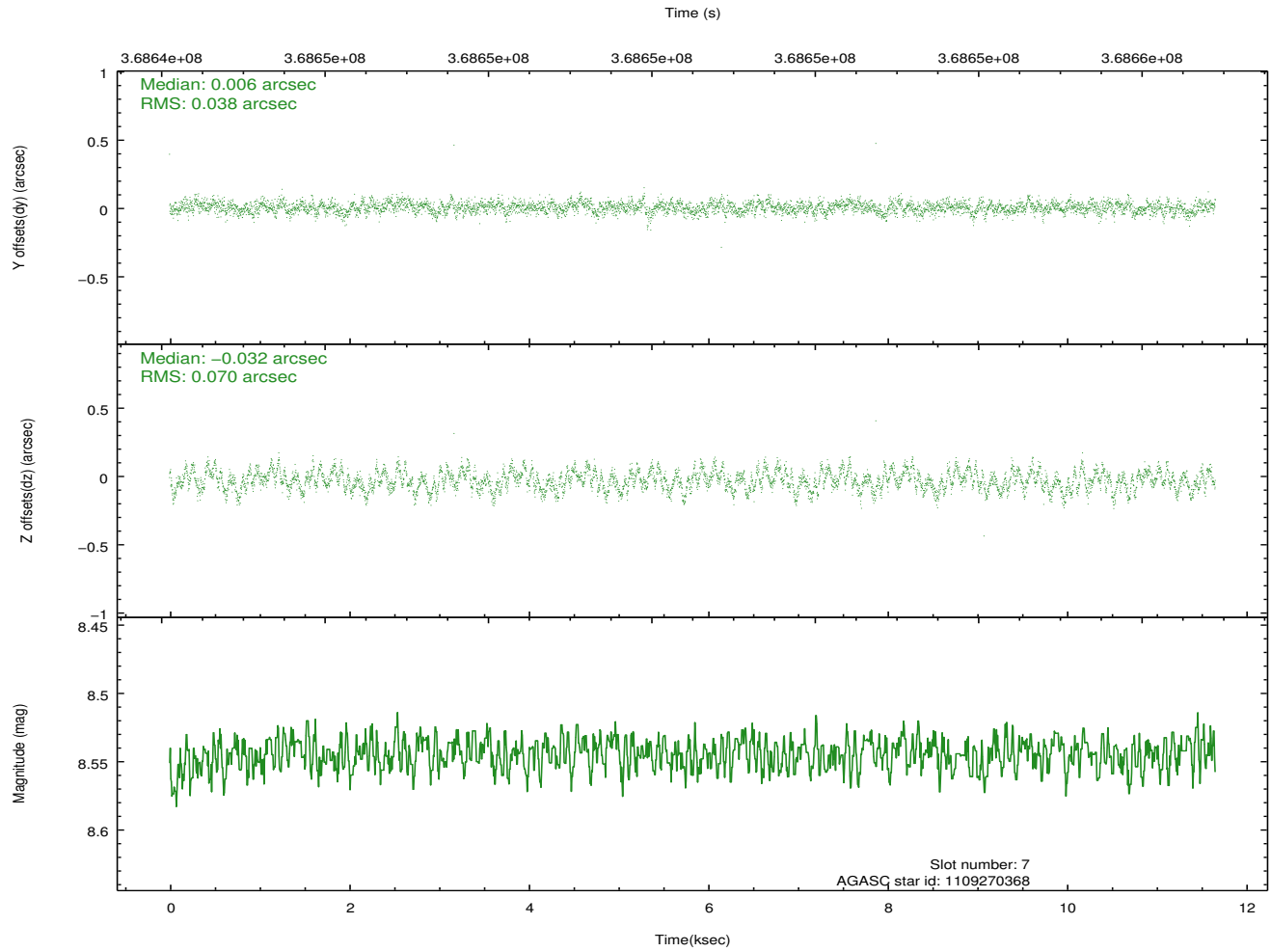
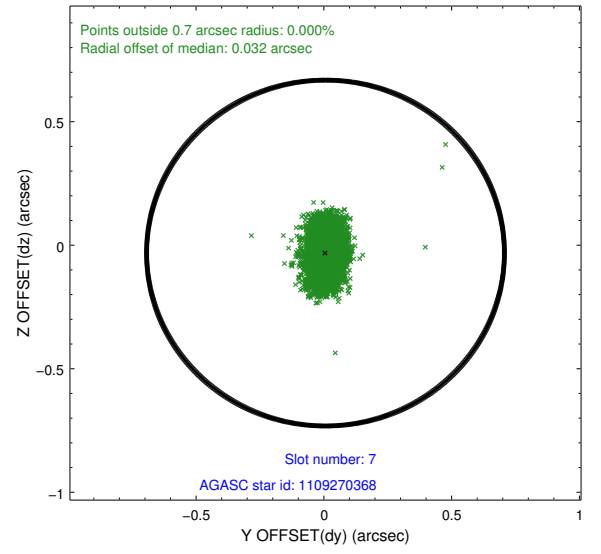
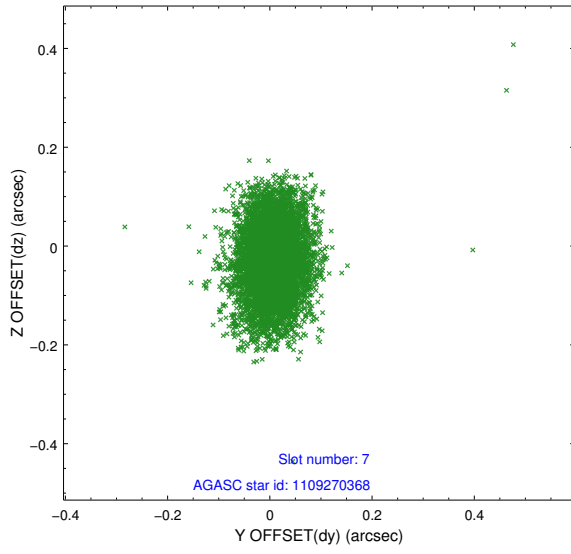


## 2.4.4 Slot 6



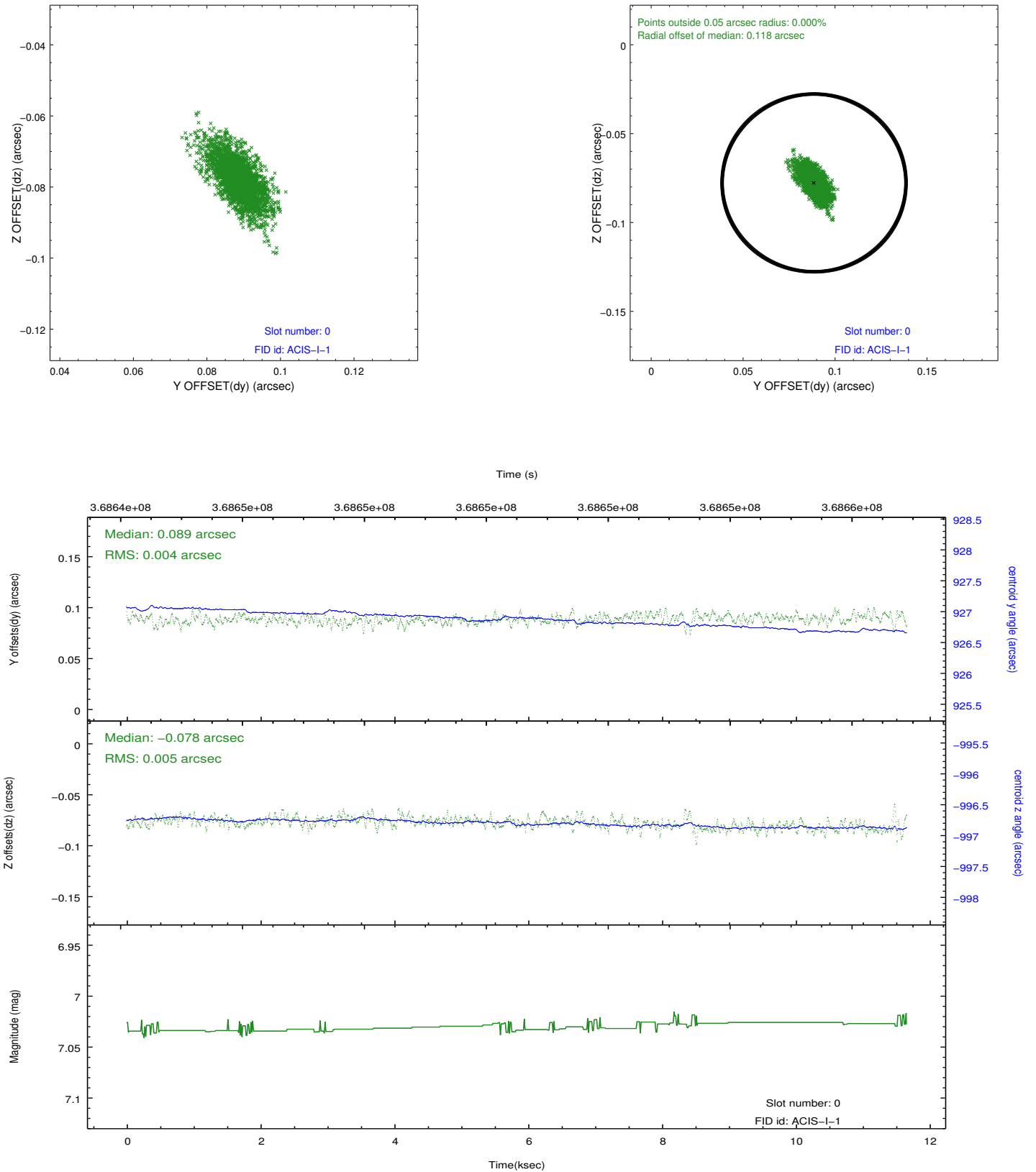


## 2.4.5 Slot 7

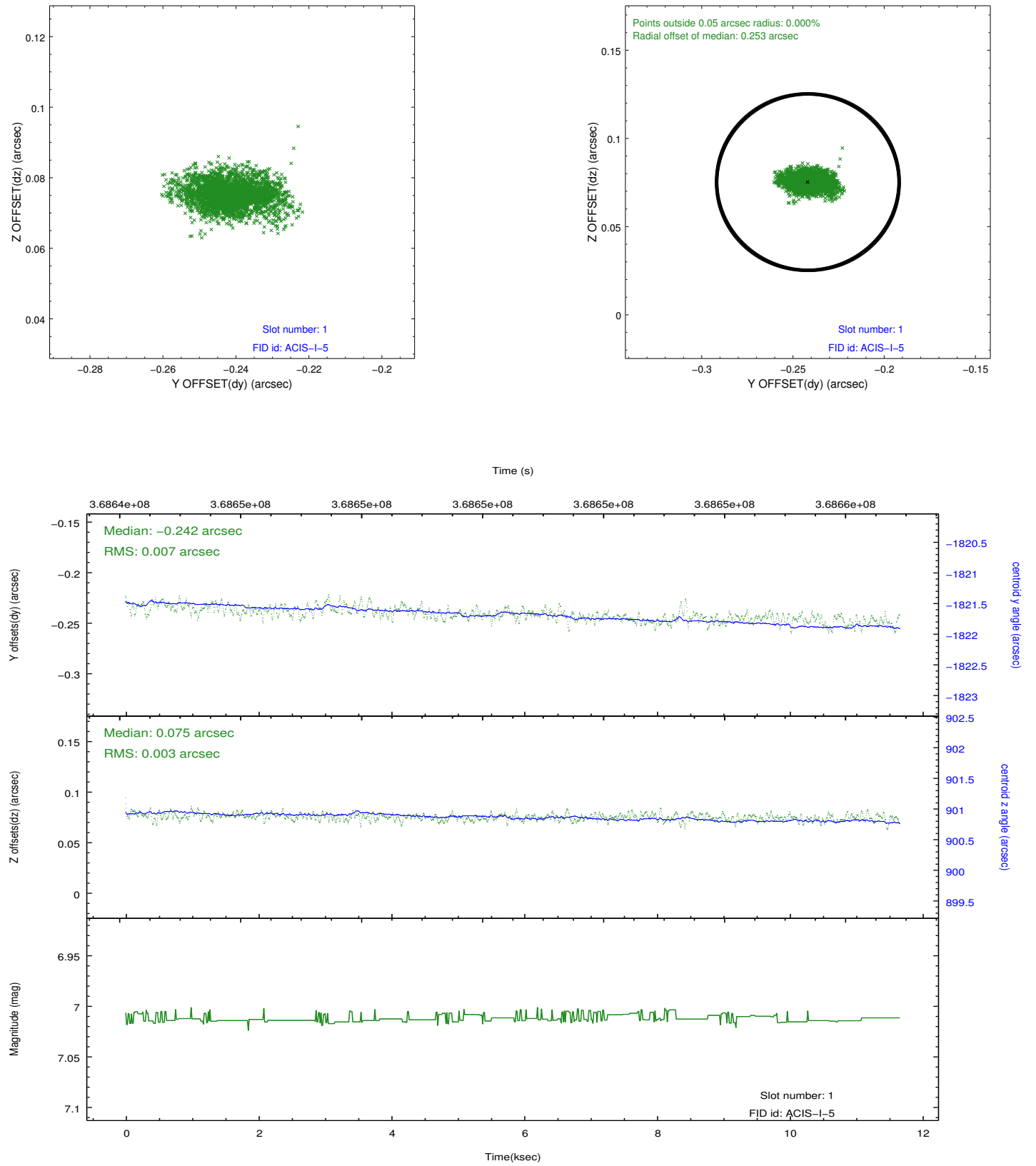


## 2.5 FID Slots

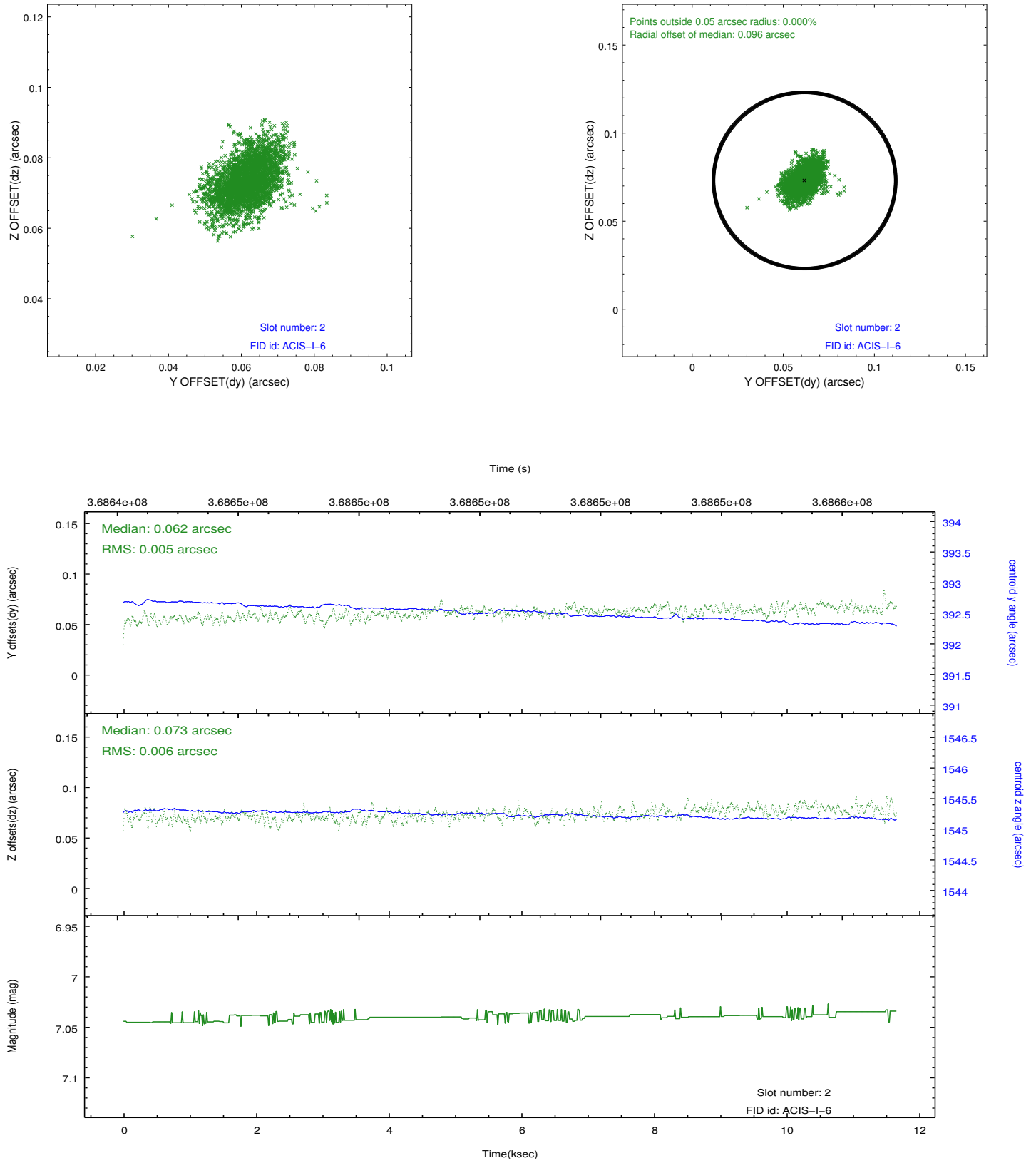
### 2.5.1 Slot 0



## 2.5.2 Slot 1



### 2.5.3 Slot 2



## A Summary

### A.1 Status

V&V Scientist	Jen Lauer
V&V Date (YYYY-MM-DD)	2012.06.15
V&V Edition	1
V&V Disposition and Status	OK
V&V Charge Time	11.652859089434

### A.2 Comments