

# V&V Reference Report

## L2 ASCDS Version : 8.4.4

Observation 10876 - L2 Version 2  
Chandra X-Ray Center

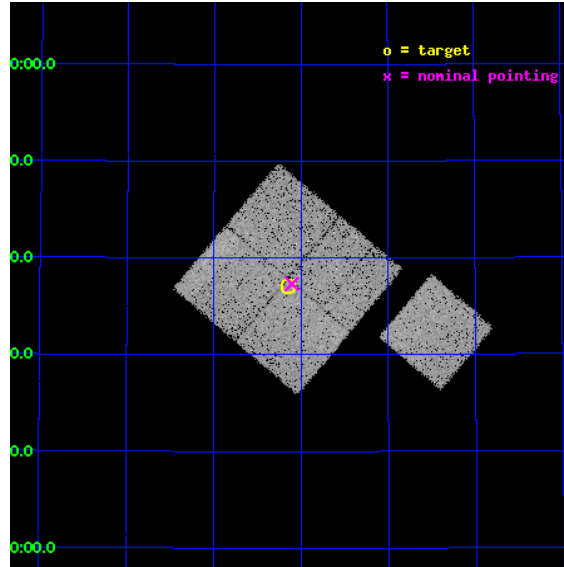
L2 Processing Date : Jun 2 2012

## Contents

<b>1</b>	<b>Front</b>	<b>2</b>
<b>2</b>	<b>OBI</b>	<b>3</b>
2.1	OBI . . . . .	3
2.1.1	Images . . . . .	3
2.1.2	Bias . . . . .	3
2.1.3	Parameters . . . . .	4
2.1.4	Events . . . . .	4
2.2	Compared Parameters . . . . .	5
2.3	Aspect . . . . .	6
2.4	Star Slots . . . . .	9
2.4.1	Slot 3 . . . . .	9
2.4.2	Slot 4 . . . . .	10
2.4.3	Slot 5 . . . . .	11
2.4.4	Slot 6 . . . . .	12
2.4.5	Slot 7 . . . . .	13
2.5	FID Slots . . . . .	14
2.5.1	Slot 0 . . . . .	14
2.5.2	Slot 1 . . . . .	15
2.5.3	Slot 2 . . . . .	16
<b>A</b>	<b>Summary</b>	<b>17</b>
A.1	Status . . . . .	17
A.2	Comments . . . . .	17

# 1 Front

seq_num	900798	Sequence number
obs_id	10876	Observation id
title	The Evolution of Faint AGN at High Redshift	Proposal title
observer	Prof Kirpal Nandra	Principal investigator
object	AEGIS-3	Source name
dtcycle	0	&#160
cycle	P	events from which exps? Prim/Second/Both
ra_targ	214.5375	Observer's specified target RA [deg]
dec_targ	52.617889	Observer's specified target Dec [deg]
ra_nom	214.52625865772	Nominal RA [deg]
dec_nom	52.622219806996	Nominal Dec [deg]
roll_nom	130.21762032262	Nominal Roll [deg]
revision	2	Processing version of data
ontime	17436.695322156	Sum of GTIs [s]
livetime	17208.872061064	Livetime [s]
ontime0	17439.713202417	Sum of GTIs [s]
ontime1	17433.4722417	Sum of GTIs [s]
ontime2	17424.090230942	Sum of GTIs [s]
ontime3	17436.695322156	Sum of GTIs [s]
ontime6	17436.531172037	Sum of GTIs [s]
l2events	64220	Number of level 2 events

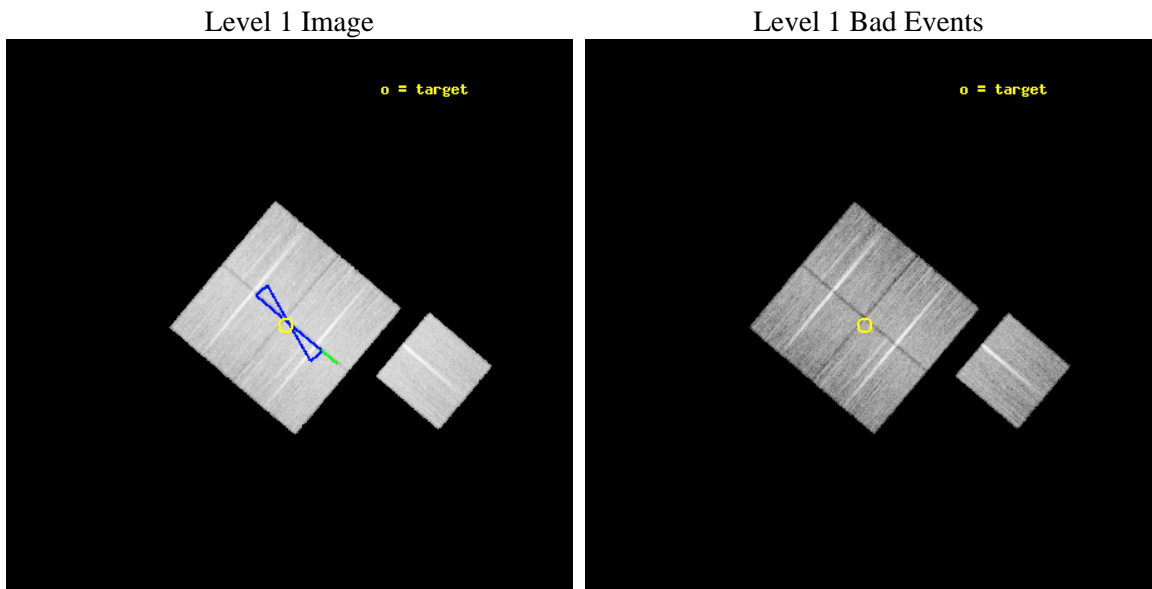




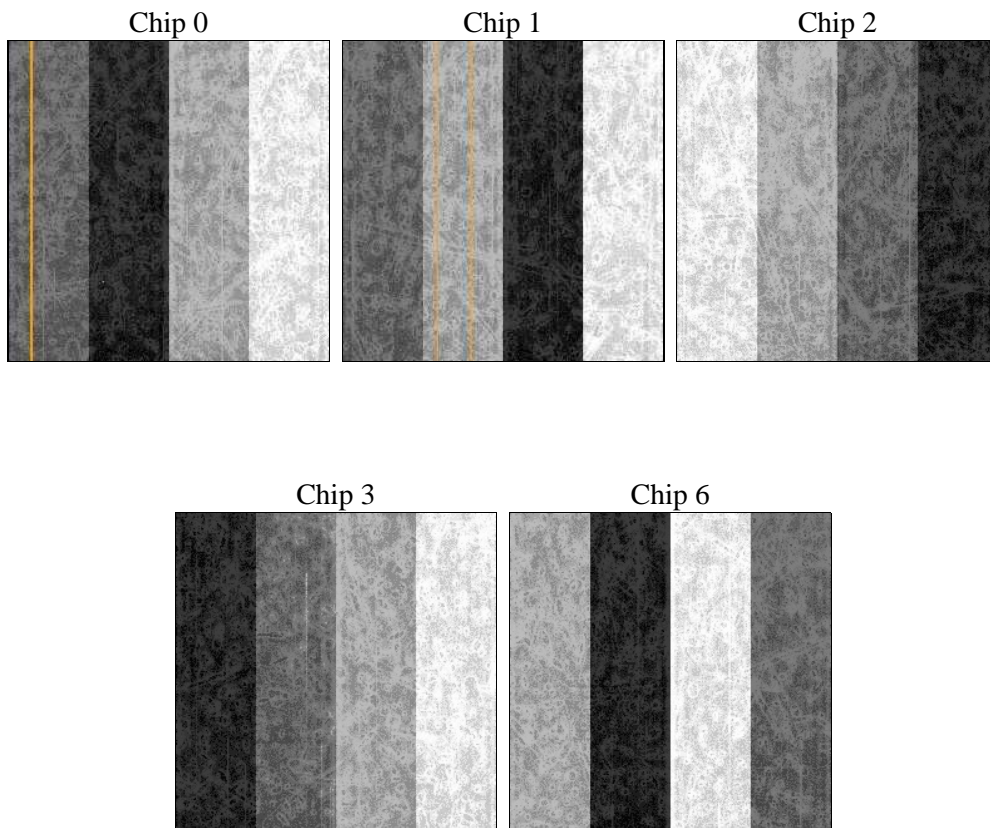
## 2 OBI

### 2.1 OBI

#### 2.1.1 Images



#### 2.1.2 Bias



### 2.1.3 Parameters

obi_num	0	Obi number	sched_exp_time	17400.000000	[s] Scheduled observation exposure time
ascdsver	8.4.4	Processing system revision	ontime	17436.695322156	Sum of GTIs [s]
caldsver	4.4.9	&#160	ontime0	17439.713202417	Sum of GTIs [s]
date	2012-06-02T01:43:12	Date and time of file creation	ontime1	17433.4722417	Sum of GTIs [s]
revision	2	Processing version of data	ontime2	17424.090230942	Sum of GTIs [s]
			ontime3	17436.695322156	Sum of GTIs [s]
			ontime6	17436.531172037	Sum of GTIs [s]
			l1events	746996	Number of level 1 events

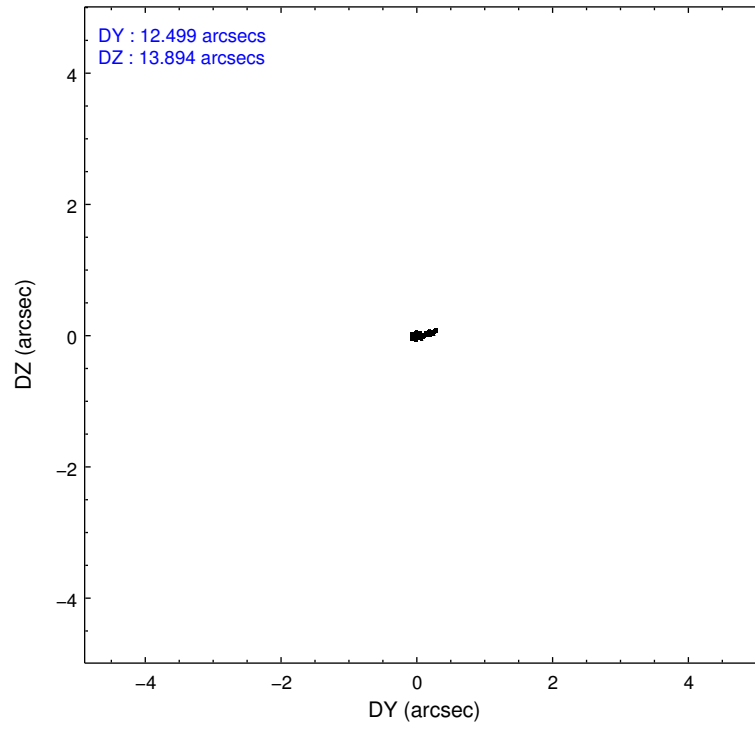
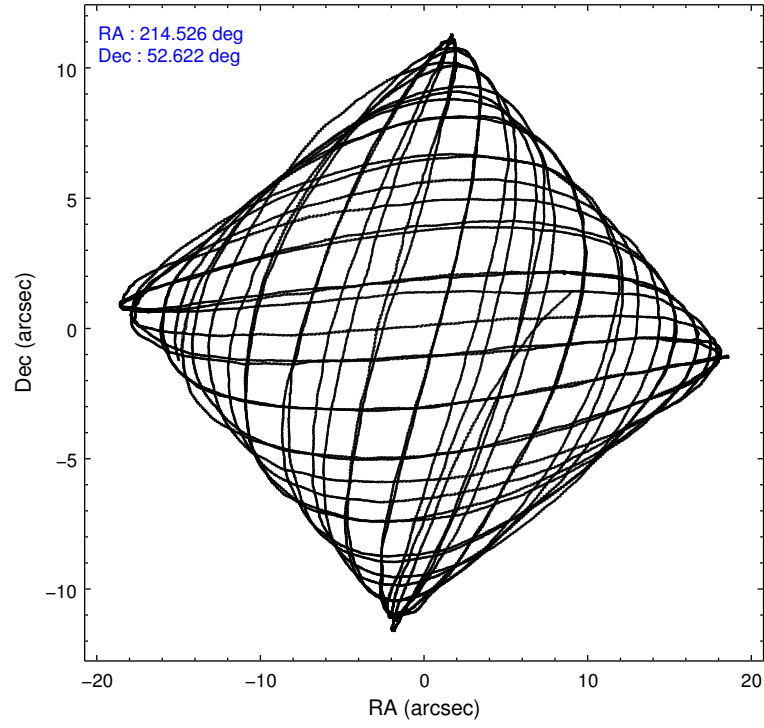
### 2.1.4 Events

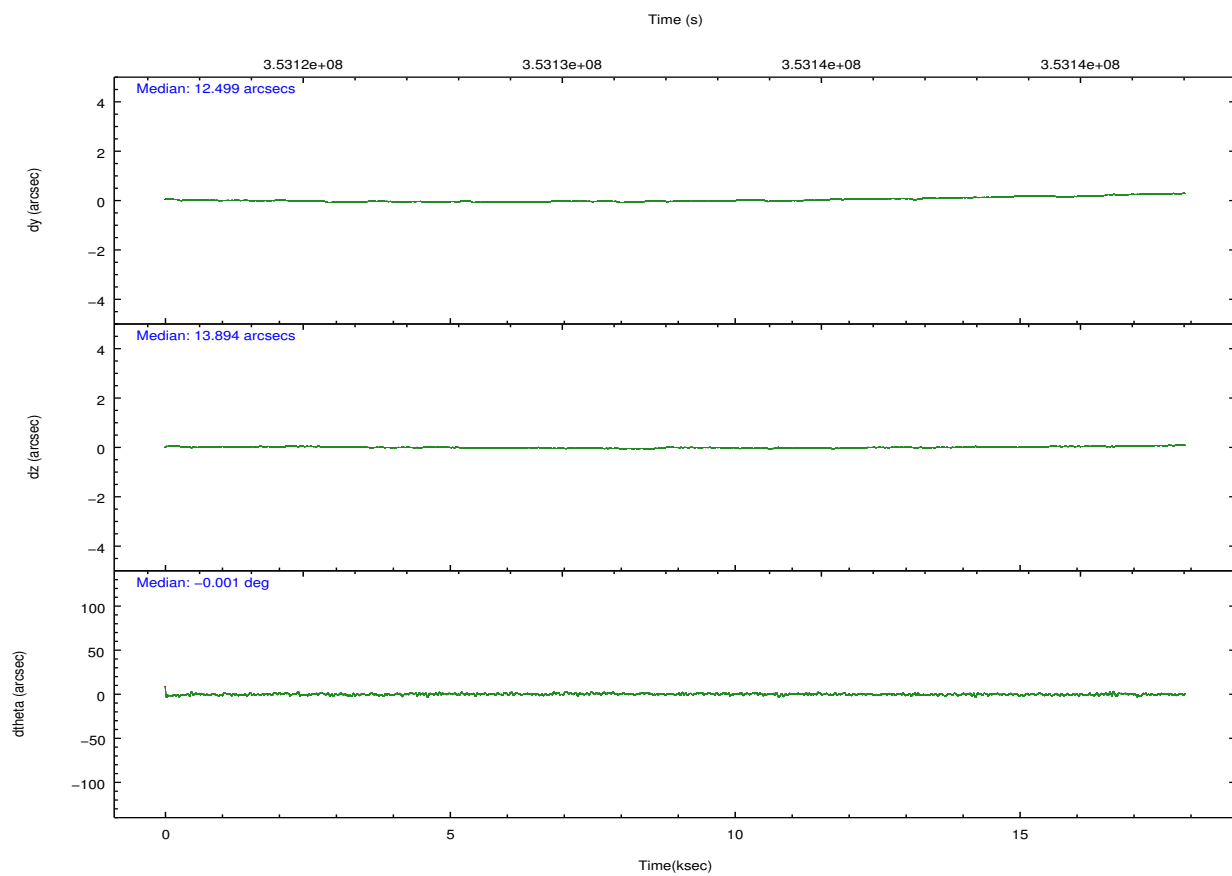
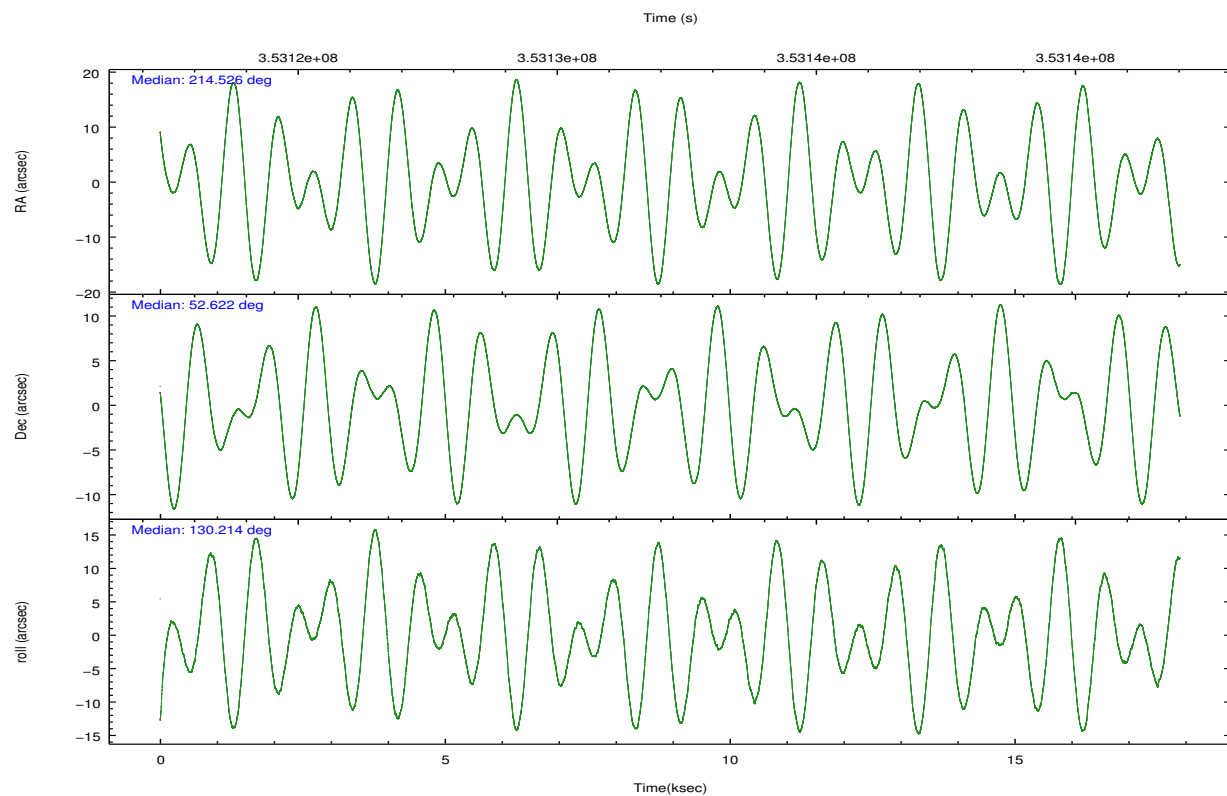
	ccd 0	ccd 1	ccd 2	ccd 3	ccd 6		ccd 0	ccd 1	ccd 2	ccd 3	ccd 6
level 1 events	141954	143497	157883	148397	155265	grade 0 events	5296	5946	5400	5037	5392
rejected events	126548	126763	142722	133895	139869		3%	4%	3%	3%	3%
rejected %	89%	88%	90%	90%	90%	grade 1 events	75	86	84	100	68
							0%	0%	0%	0%	0%
						grade 2 events	3867	3891	3686	3269	3443
							2%	2%	2%	2%	2%
						grade 3 events	1749	1785	1575	1663	1626
							1%	1%	0%	1%	1%
						grade 4 events	1578	1749	1622	1570	1583
							1%	1%	1%	1%	1%
						grade 5 events	5559	5888	5268	6400	6228
							3%	4%	3%	4%	4%
						grade 6 events	2921	3369	2886	2967	3358
							2%	2%	1%	1%	2%
						grade 7 events	120909	120783	137362	127391	133567
							85%	84%	87%	85%	86%

## 2.2 Compared Parameters

Parameter	Planned	Actual	Parameter	Planned	Actual
Instrument	ACIS	ACIS	Obspar format version number	7	7
Detector	ACIS-01236	ACIS-01236	Obspar file type	PREDICTED	ACTUAL
Grating	NONE	NONE	Obspar update status	NONE	UPDATED
Data mode	VFAINT	VFAINT	CCD I0 on	Y	Y
Observation mode	POINTING	POINTING	CCD I1 on	Y	Y
[deg] Pointing RA	214.568942	214.5262586577186	CCD I2 on	Y	Y
[deg] Pointing Dec	52.613020	52.62221980699621	CCD I3 on	Y	Y
[deg] Pointing Roll	129.975019	130.2176203226181	CCD S0 on	N	N
[deg] Roll angle	50.000000	50.000000	CCD S1 on	N	N
[deg] Roll tolerance	10.000000	10.000000	CCD S2 on	O1	Y
Roll constraint allows 180D rotation	Y	Y	CCD S3 on	N	N
[mm] SIM focus pos	-0.782348	-0.7809083437167272	CCD S4 on	N	N
[mm] SIM defocus	0	0.001439871863259334	CCD S5 on	N	N
[mm] SIM translation stage pos	-233.592463	-233.5874344608287	Number of optional ACIS chips dropped	0	0
[mm] SIM translation stage offset	0	-0.005018542100998502	On-chip summing requested	N	N
[s] Observation start time (MET)	353123725.184000	353122640.05591	Subarray requested	NONE	NONE
Observation start date	2009-03-11T01:54:19	2009-03-11T01:37:20	Alternating exposures requested	N	N
[s] Observation end time (MET)	353141125.184000	353141944.90687	[s] Primary exposure time	0.000000	3.1
Observation end date	2009-03-11T06:44:19	2009-03-11T06:59:04			
Read mode	TIMED	TIMED			

## 2.3 Aspect



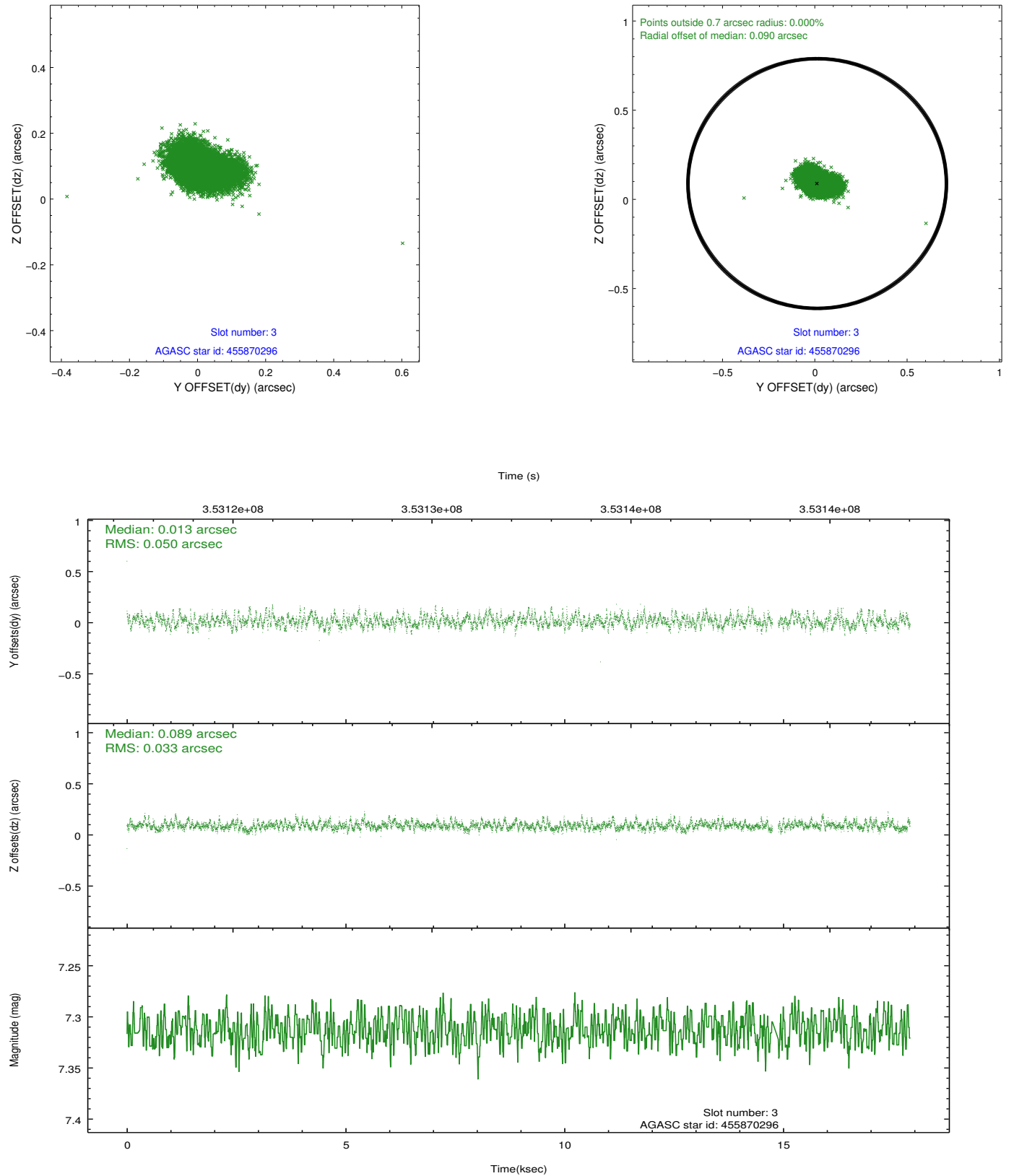


### Slot Statistics

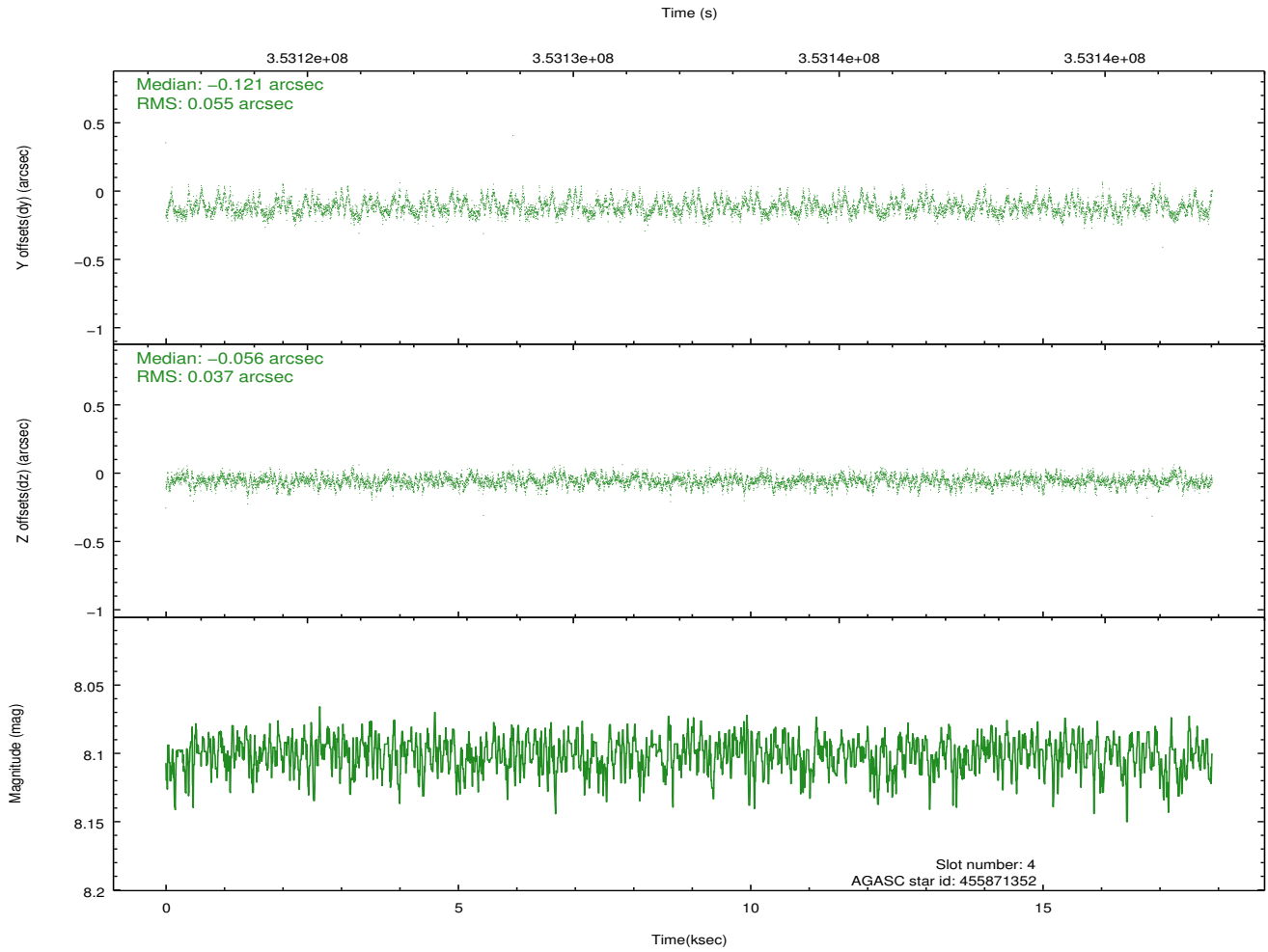
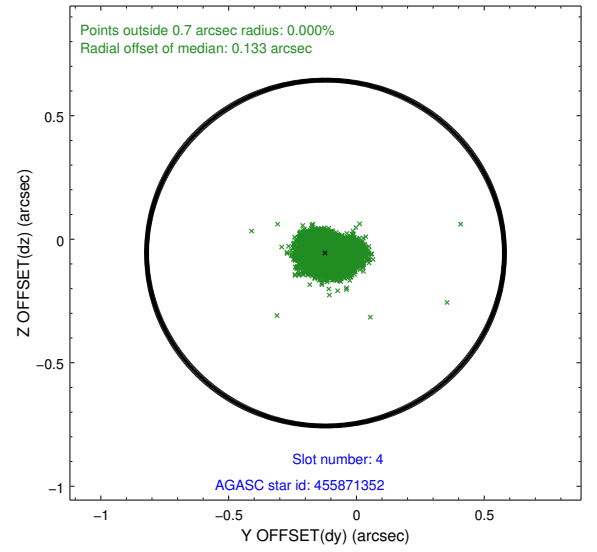
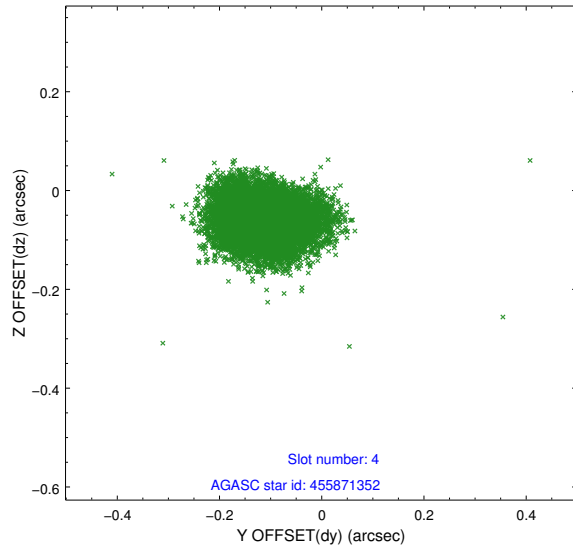
slot	status	id	mag	n_pts	med_dy	med_dz	dr1	dr2	ra	dec	mean_y	mean_z
0	FID	ACIS-I-1	7.10	4366	-0.056	0.063	0.009	0.016	0.000000	0.000000	926.92	-837.42
1	FID	ACIS-I-2	7.02	4364	-0.155	-0.092	0.008	0.013	0.000000	0.000000	-767.14	-844.10
2	FID	ACIS-I-4	7.02	4366	0.113	0.097	0.007	0.014	0.000000	0.000000	2146.91	1062.28
3	GUIDE	455870296	7.31	8668	0.013	0.089	0.063	0.106	214.629779	52.033323	-1685.60	1237.64
4	GUIDE	455871352	8.10	8726	-0.121	-0.056	0.071	0.114	215.099961	52.172669	-1964.85	117.44
5	GUIDE	505806936	7.01	8731	0.010	-0.068	0.074	0.118	213.820815	52.535927	846.20	1428.45
6	GUIDE	505812088	8.17	8729	0.017	0.093	0.072	0.116	214.186617	53.263562	2325.66	-874.53
7	GUIDE	505812376	7.65	8729	0.072	-0.063	0.048	0.079	214.039537	52.937930	1638.05	126.19

## 2.4 Star Slots

### 2.4.1 Slot 3

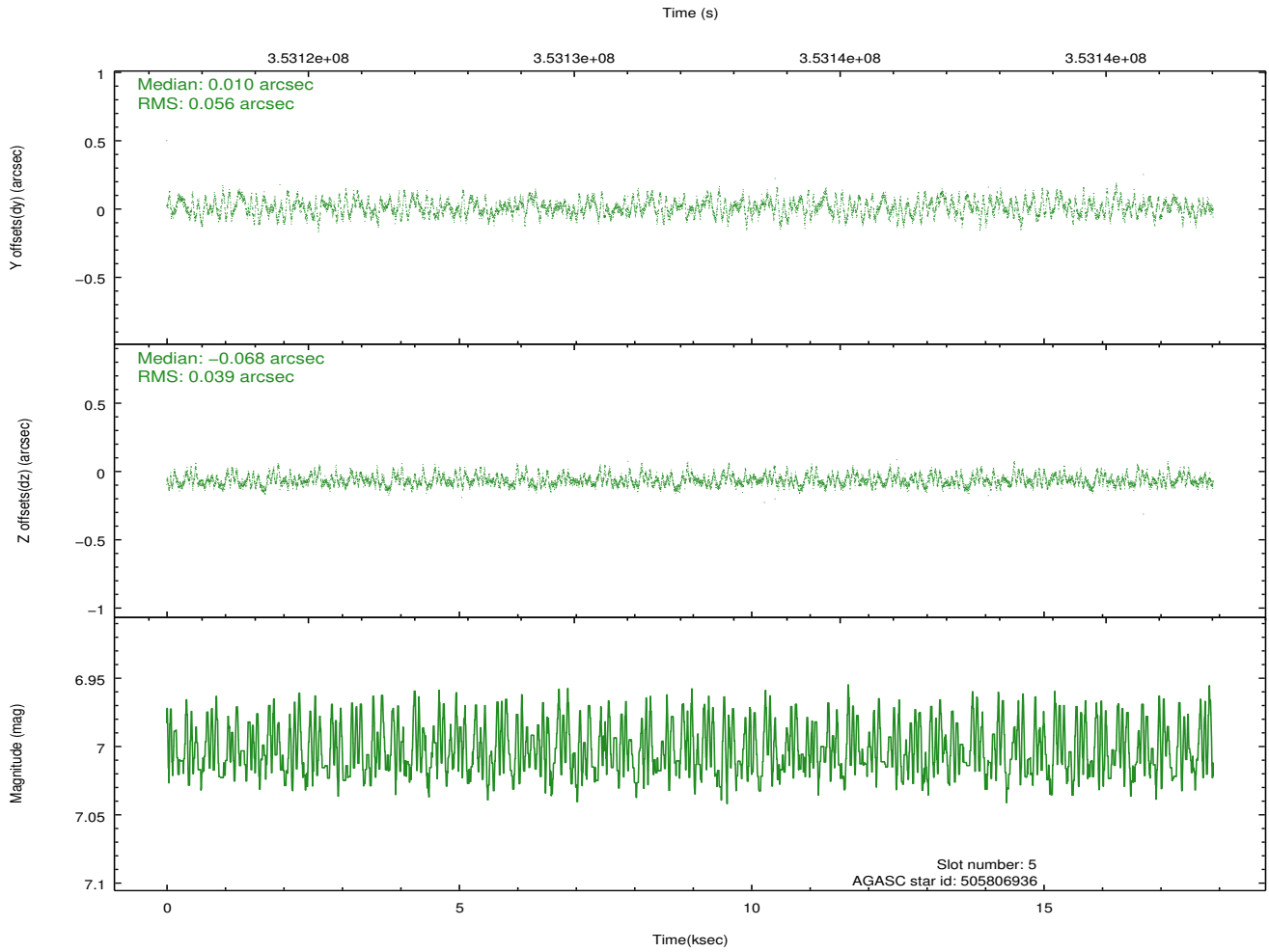
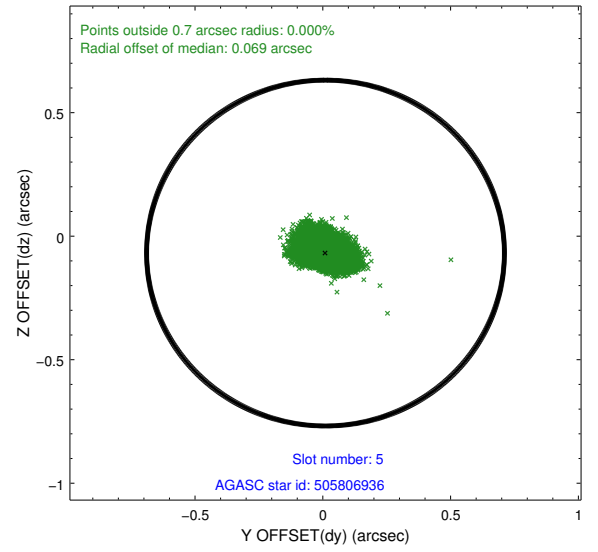
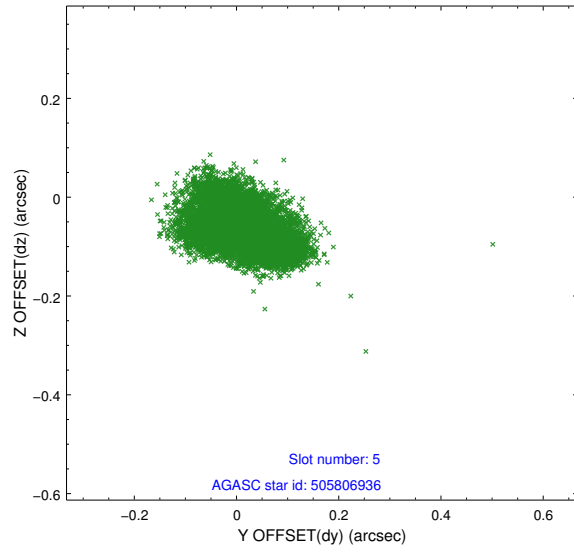


## 2.4.2 Slot 4

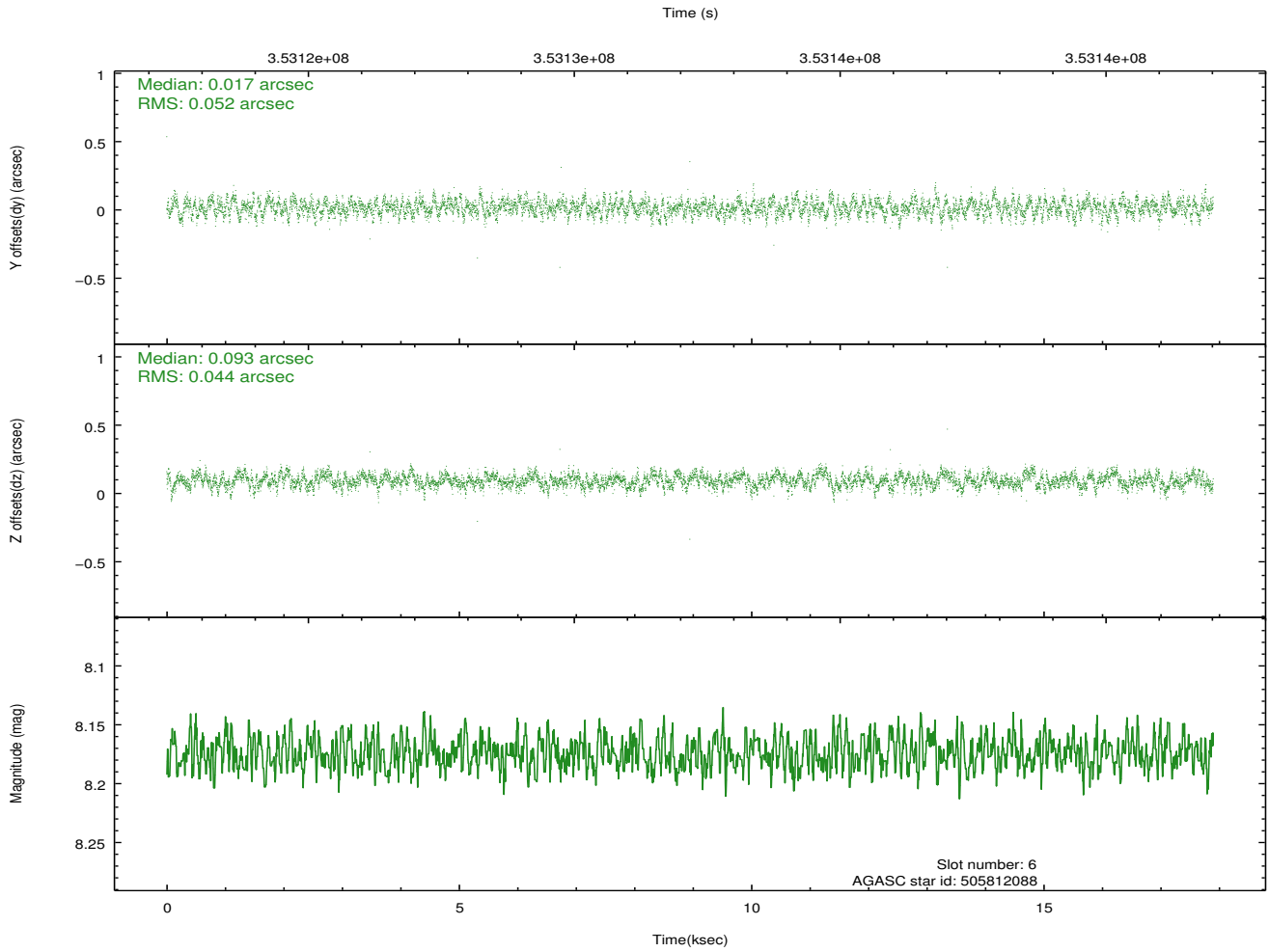
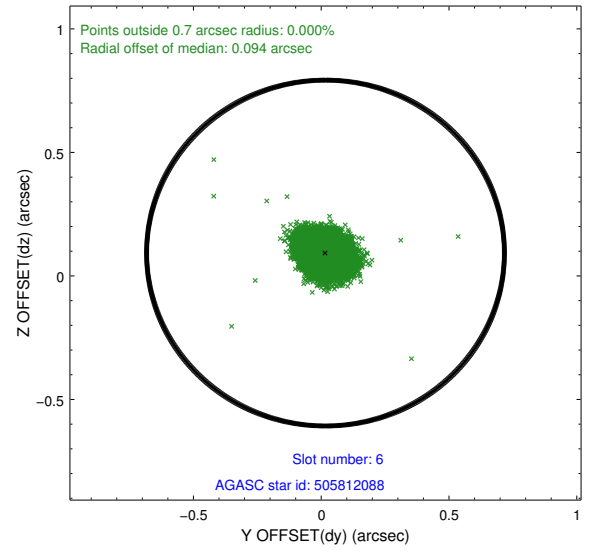
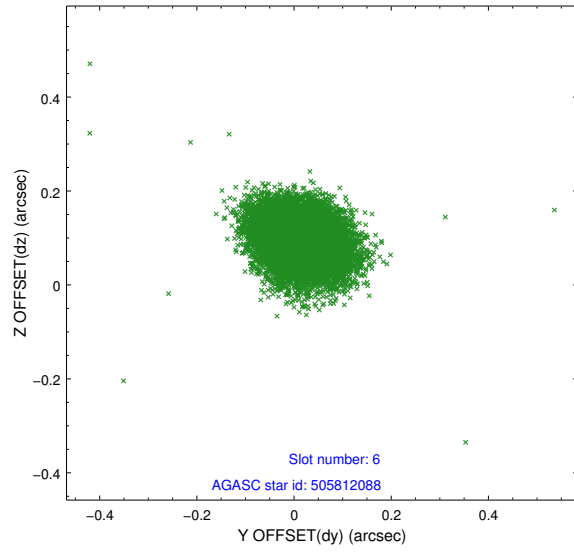




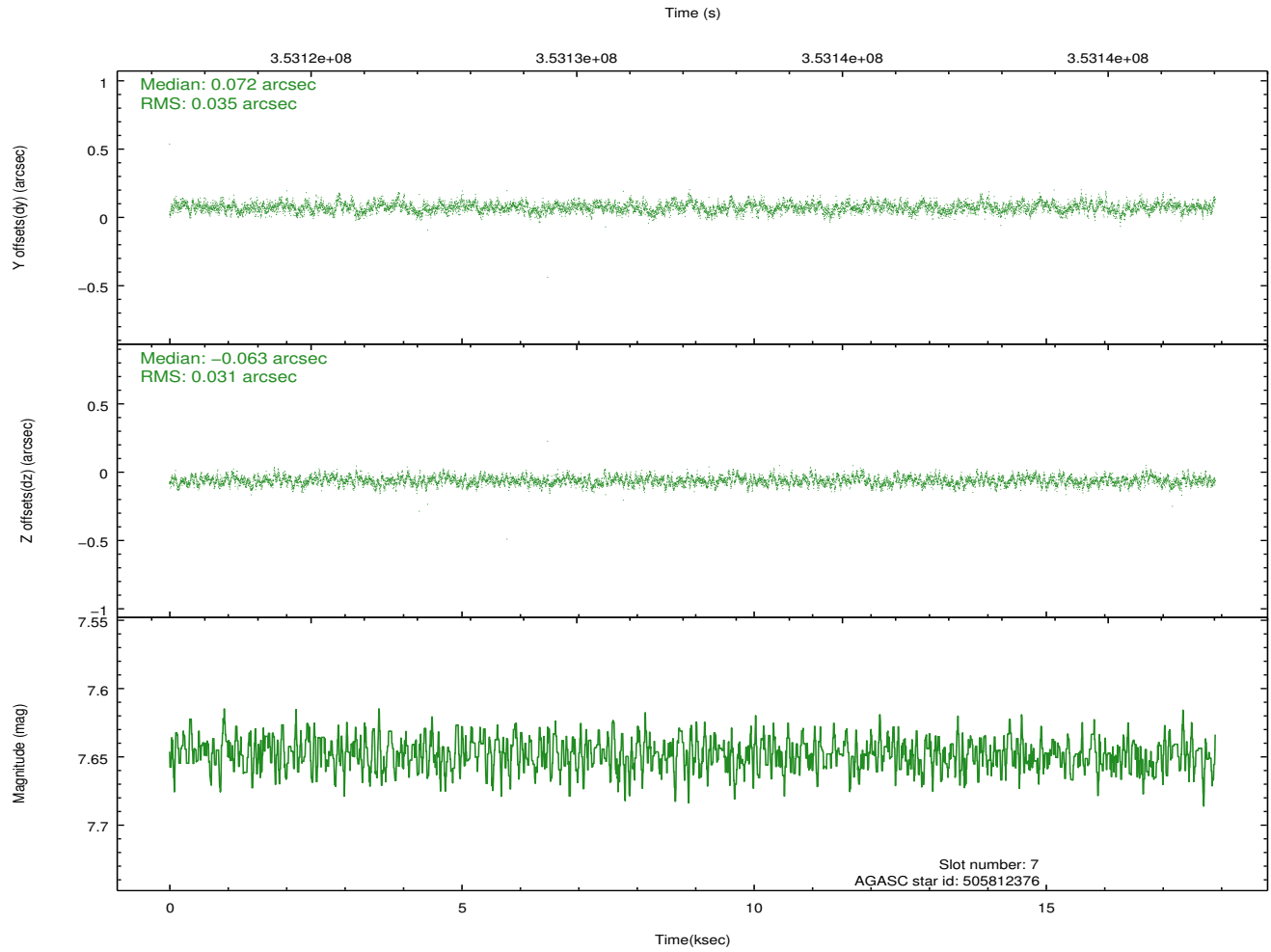
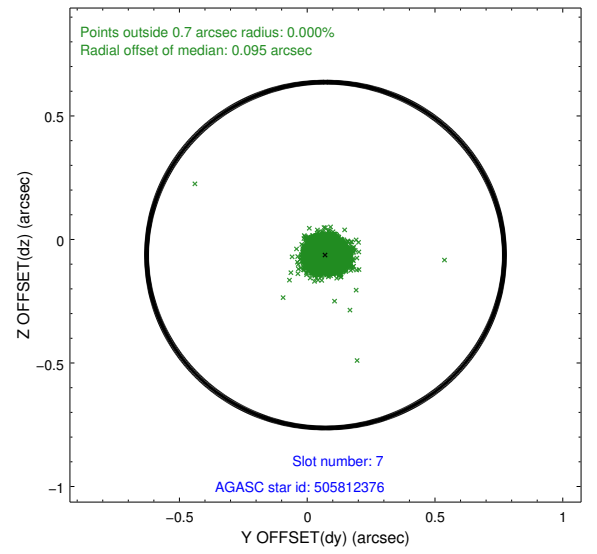
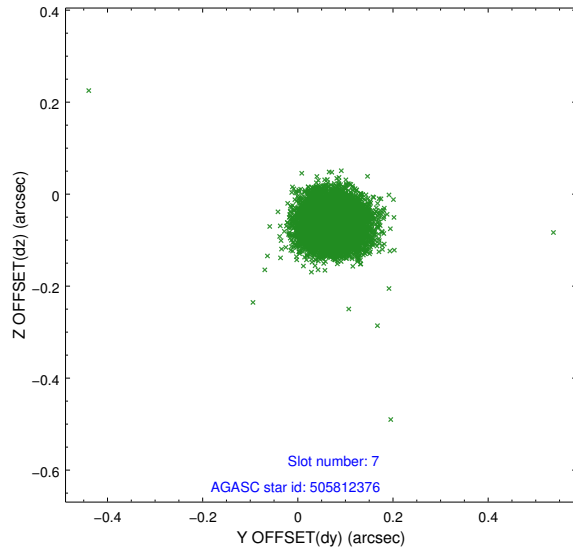
### 2.4.3 Slot 5



## 2.4.4 Slot 6

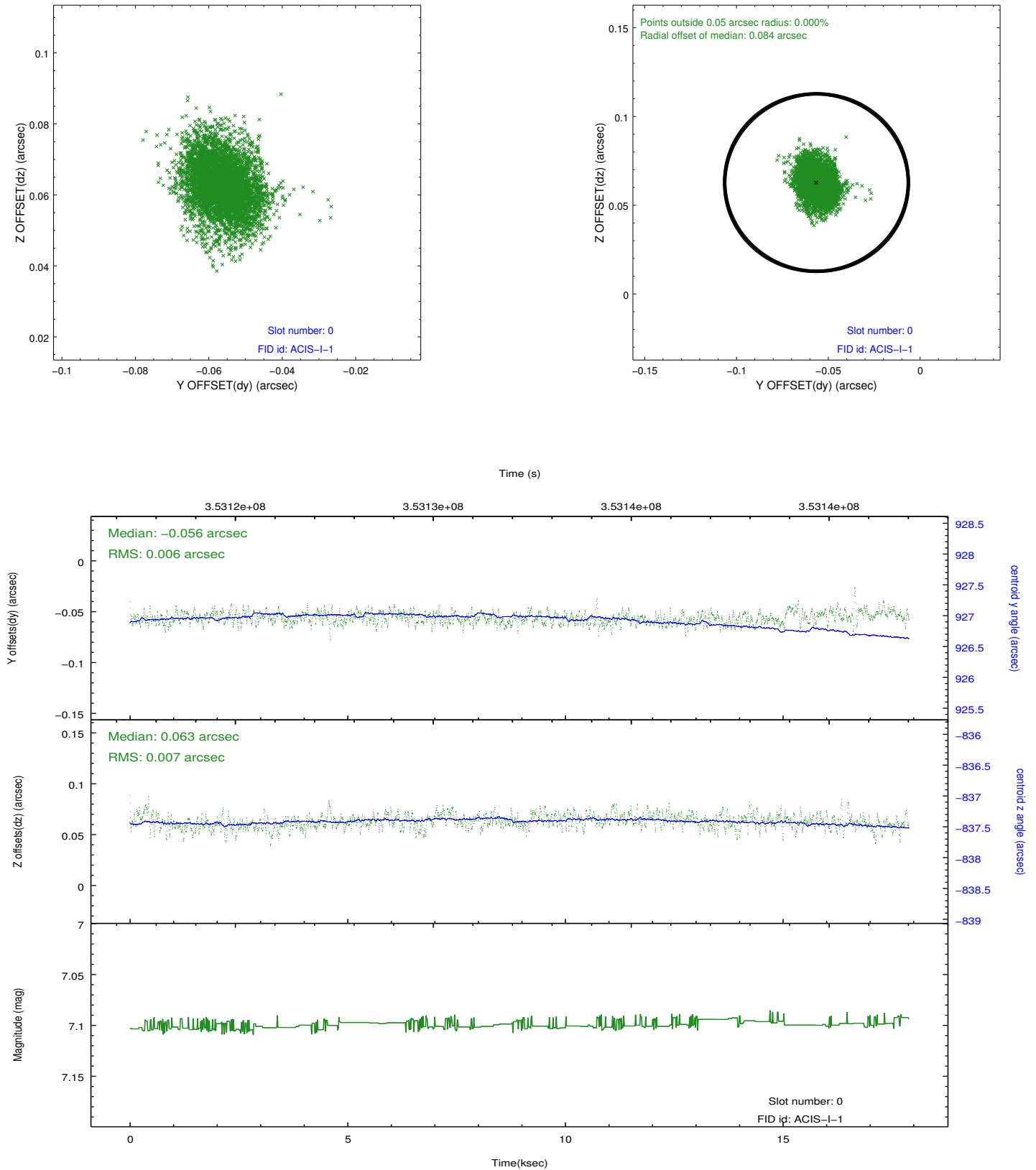


## 2.4.5 Slot 7

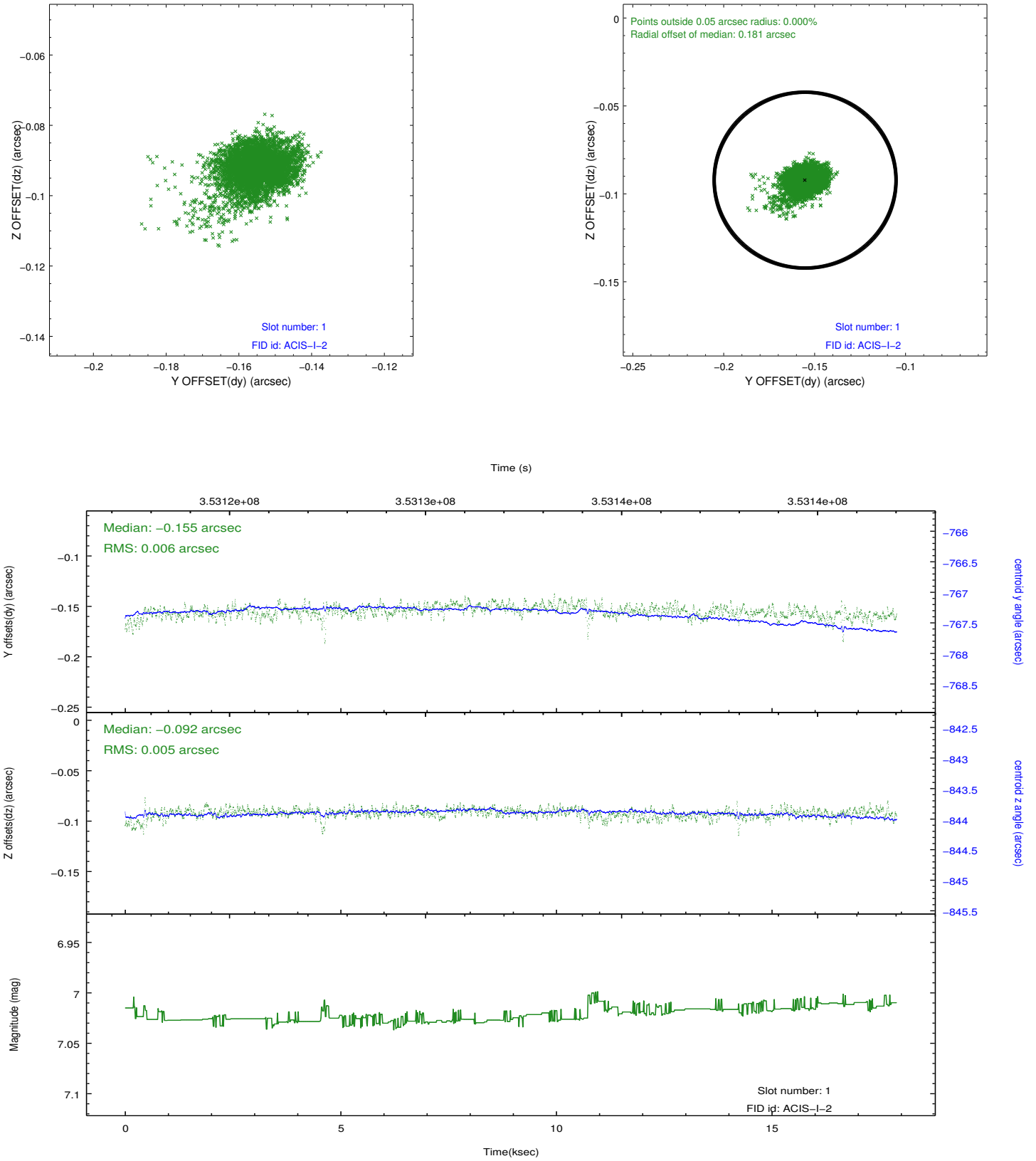


## 2.5 FID Slots

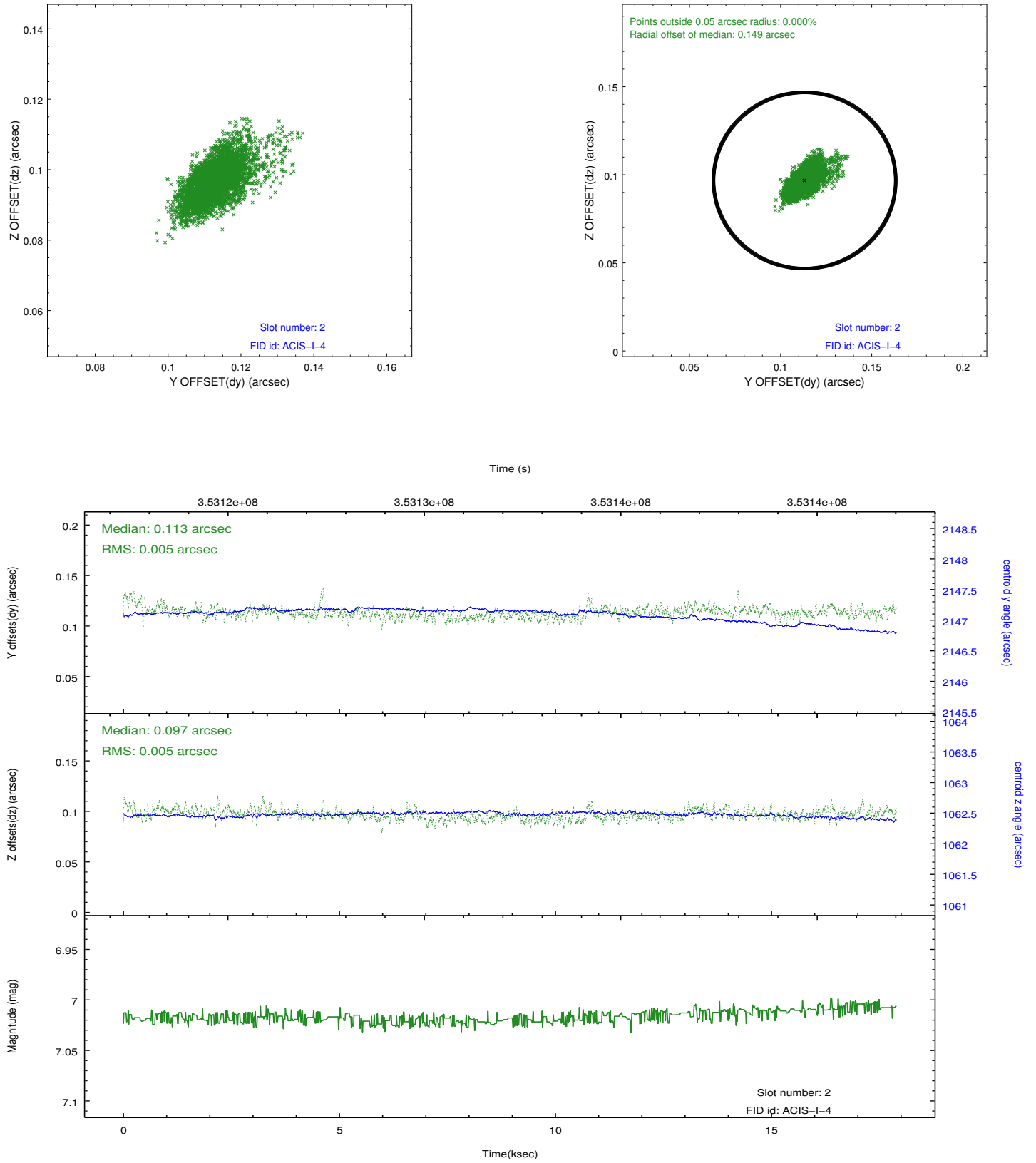
### 2.5.1 Slot 0



## 2.5.2 Slot 1



### 2.5.3 Slot 2



## A Summary

### A.1 Status

V&V Scientist	Joy Nichols
V&V Date (YYYY-MM-DD)	2012.06.07
V&V Edition	1
V&V Disposition and Status	OK
V&V Charge Time	17.4374591

### A.2 Comments

Joint proposal with Spitzer. Roll constraint met.