

V&V Reference Report

L2 ASCDS Version : 8.4.4

Observation 10546 - L2 Version 2
Chandra X-Ray Center

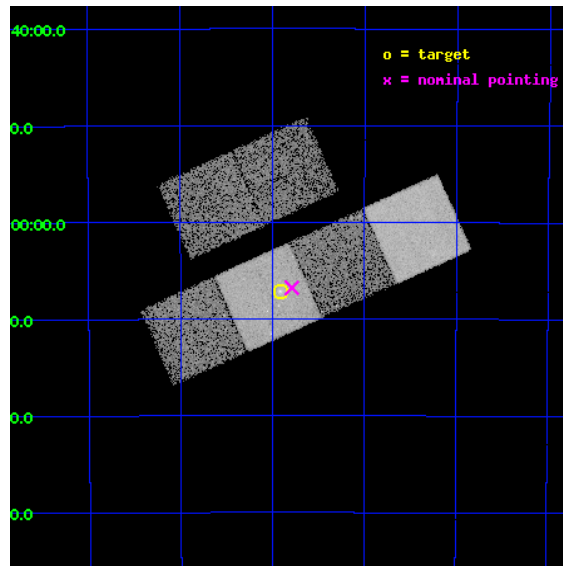
L2 Processing Date : Jun 1 2012

Contents

1	Front	2
2	OBI	3
2.1	OBI	3
2.1.1	Images	3
2.1.2	Bias	3
2.1.3	Parameters	4
2.1.4	Events	4
2.2	Compared Parameters	5
2.3	Aspect	6
2.4	Star Slots	9
2.4.1	Slot 3	9
2.4.2	Slot 4	10
2.4.3	Slot 5	11
2.4.4	Slot 6	12
2.4.5	Slot 7	13
2.5	FID Slots	14
2.5.1	Slot 0	14
2.5.2	Slot 1	15
2.5.3	Slot 2	16
A	Summary	17
A.1	Status	17
A.2	Comments	17

1 Front

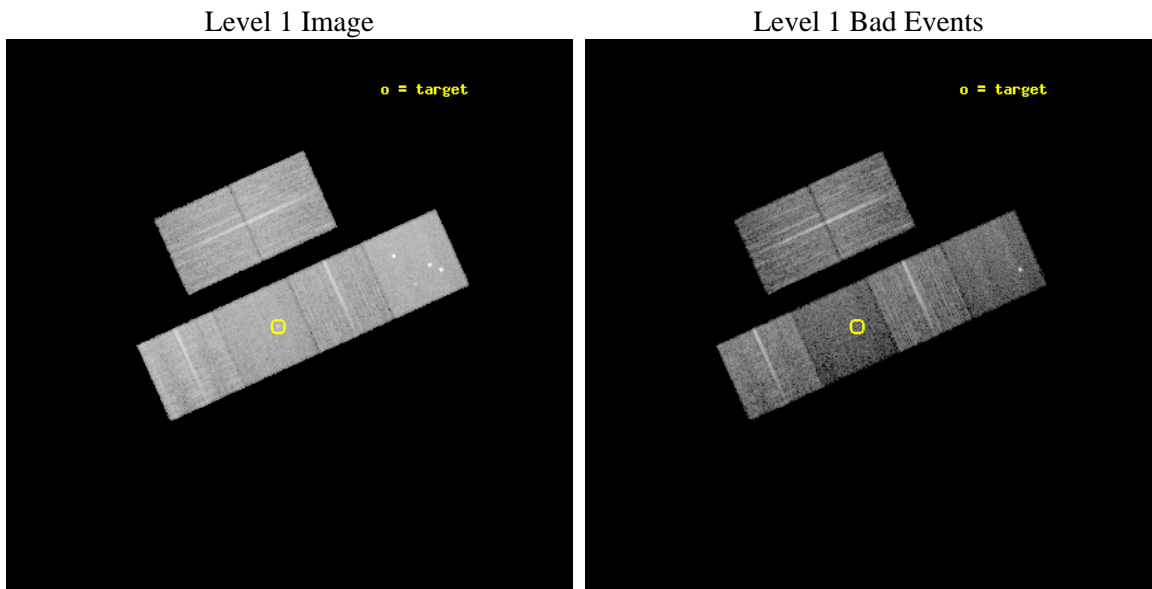
seq_num	600739	Sequence number
obs_id	10546	Observation id
title	A Chandra Study of Field Early-Type Galaxies	Proposal title
observer	Dr. John Mulchaey	Principal investigator
object	NGC 7196	Source name
dtcycle	0	
cycle	P	events from which exps? Prim/Second/Both
ra_targ	331.478333	Observer's specified target RA [deg]
dec_targ	-50.119333	Observer's specified target Dec [deg]
ra_nom	331.44713126397	Nominal RA [deg]
dec_nom	-50.113113025174	Nominal Dec [deg]
roll_nom	155.72427871548	Nominal Roll [deg]
revision	2	Processing version of data
ontime	10236.799961925	Sum of GTIs [s]
livetime	10107.175436946	Livetime [s]
ontime2	10233.559001625	Sum of GTIs [s]
ontime3	10233.558971703	Sum of GTIs [s]
ontime5	10236.799961925	Sum of GTIs [s]
ontime6	10236.799961925	Sum of GTIs [s]
ontime7	10236.799961925	Sum of GTIs [s]
ontime8	10233.558971763	Sum of GTIs [s]
l2events	121118	Number of level 2 events



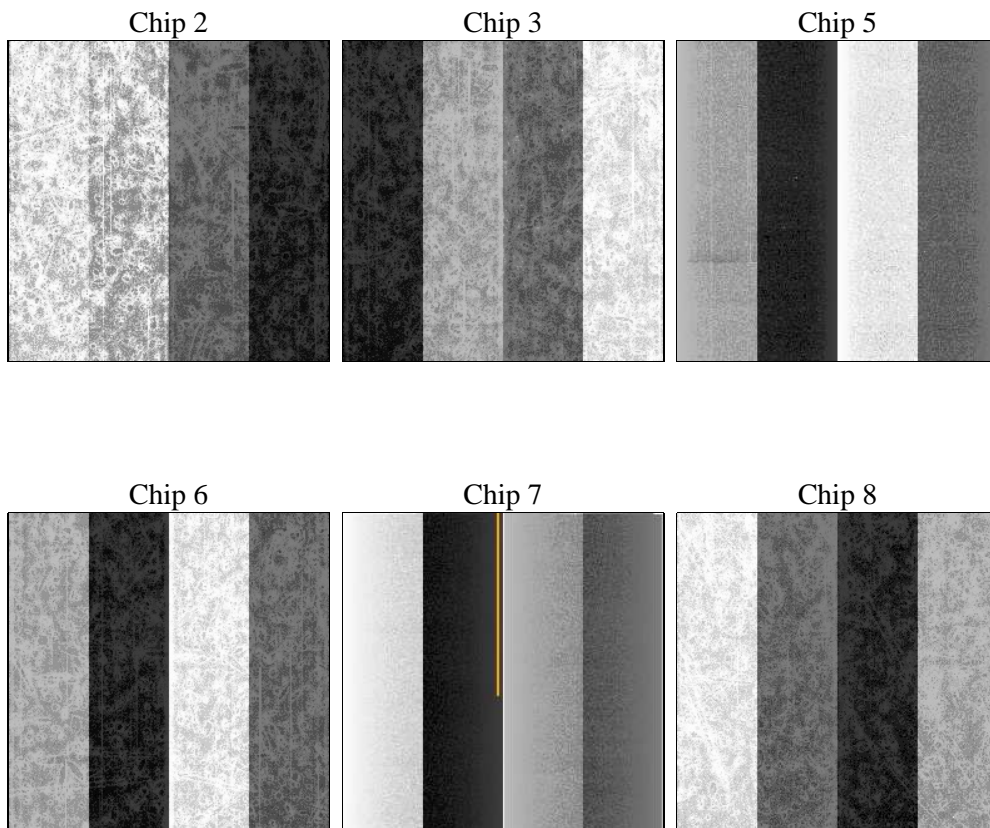
2 OBI

2.1 OBI

2.1.1 Images



2.1.2 Bias



2.1.3 Parameters

obi_num	0	Obi number	sched_exp_time	10100.000000	[s] Scheduled observation exposure time
ascdsver	8.4.4	Processing system revision	ontime	10236.799961925	Sum of GTIs [s]
caldsver	4.4.9	 	ontime2	10233.559001625	Sum of GTIs [s]
date	2012-06-02T00:19:06	Date and time of file creation	ontime3	10233.558971703	Sum of GTIs [s]
revision	2	Processing version of data	ontime5	10236.799961925	Sum of GTIs [s]
			ontime6	10236.799961925	Sum of GTIs [s]
			ontime7	10236.799961925	Sum of GTIs [s]
			ontime8	10233.558971763	Sum of GTIs [s]
			l1events	613899	Number of level 1 events

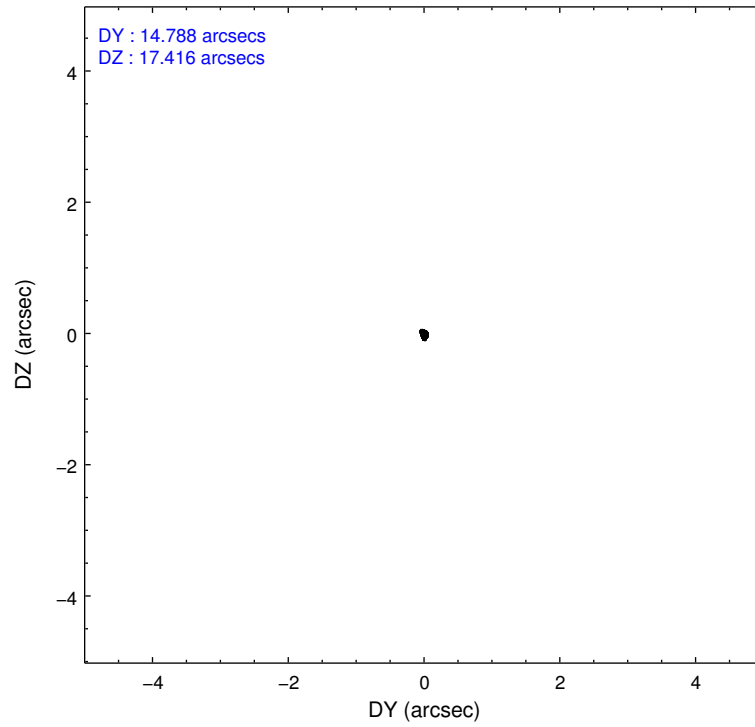
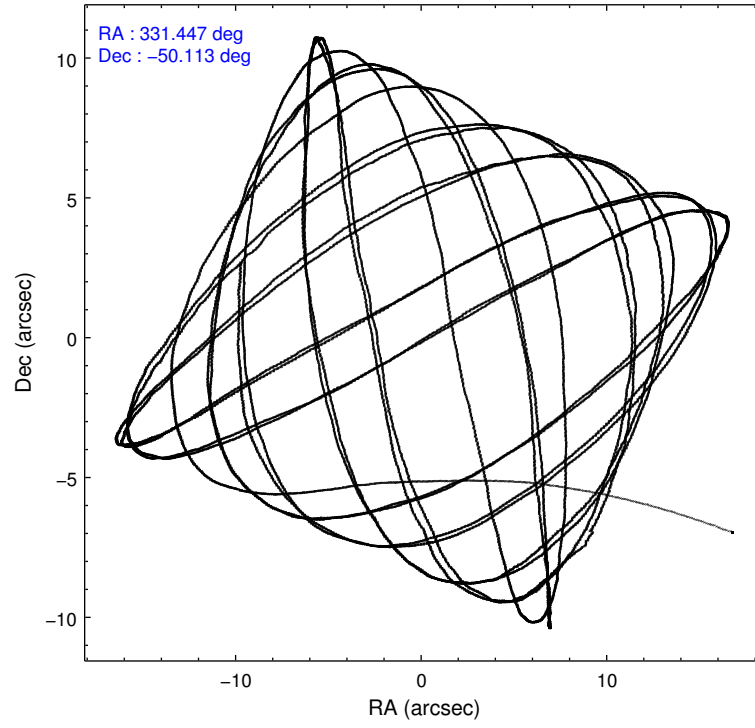
2.1.4 Events

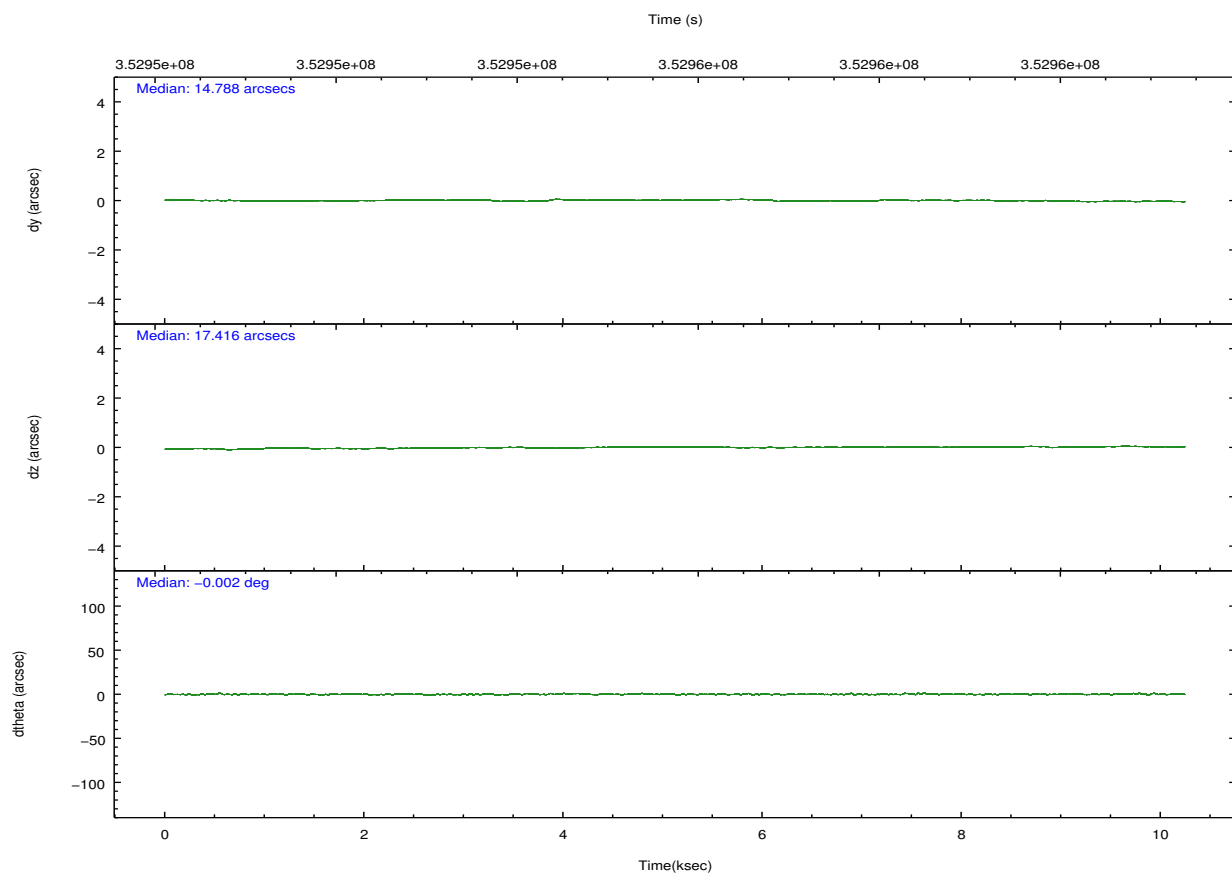
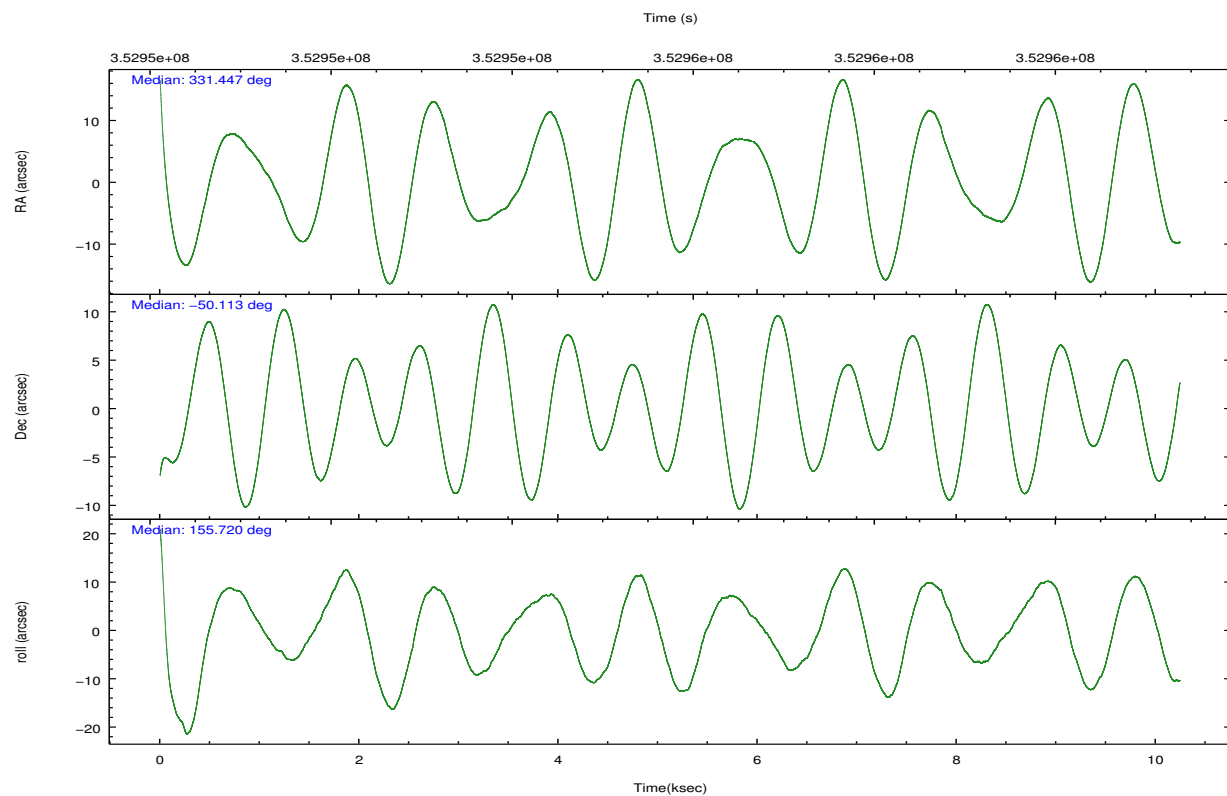
	ccd 2	ccd 3	ccd 5	ccd 6	ccd 7	ccd 8		ccd 2	ccd 3	ccd 5	ccd 6	ccd 7	ccd 8
level 1 events	100183	90194	123199	91894	92547	115882	grade 0 events	3403	3355	8924	3755	5277	8507
rejected events	92044	82405	65129	83258	51349	89985		3%	3%	7%	4%	5%	7%
rejected %	91%	91%	52%	90%	55%	77%	grade 1 events	81	54	281	52	161	90
								0%	0%	0%	0%	0%	0%
							grade 2 events	2234	1958	19786	2139	9829	6875
								2%	2%	16%	2%	10%	5%
							grade 3 events	910	970	2979	989	4440	3312
								0%	1%	2%	1%	4%	2%
							grade 4 events	1007	913	2587	966	4357	3088
								1%	1%	2%	1%	4%	2%
							grade 5 events	2868	3178	10043	3220	9582	4832
								2%	3%	8%	3%	10%	4%
							grade 6 events	1663	1651	31788	1964	22675	7946
								1%	1%	25%	2%	24%	6%
							grade 7 events	88017	78115	46811	78809	36226	81232
								87%	86%	37%	85%	39%	70%

2.2 Compared Parameters

Parameter	Planned	Actual	Parameter	Planned	Actual
Instrument	ACIS	ACIS	Obspar format version number	7	7
Detector	ACIS-235678	ACIS-235678	Obspar file type	PREDICTED	ACTUAL
Grating	NONE	NONE	Obspar update status	NONE	UPDATED
Data mode	VFAINT	VFAINT	CCD I0 on	N	N
Observation mode	POINTING	POINTING	CCD I1 on	N	N
[deg] Pointing RA	331.489532	331.4471312639723	CCD I2 on	O3	Y
[deg] Pointing Dec	-50.109956	-50.11311302517396	CCD I3 on	O4	Y
[deg] Pointing Roll	155.600166	155.7242787154816	CCD S0 on	N	N
[mm] SIM focus pos	-0.684267	-0.6828225247311905	CCD S1 on	O1	Y
[mm] SIM defocus	0	0.001444936568705701	CCD S2 on	O2	Y
[mm] SIM translation stage pos	-190.132523	-190.1425803651734	CCD S3 on	Y	Y
[mm] SIM translation stage offset	0	0.01005778216563158	CCD S4 on	O5	Y
[s] Observation start time (MET)	352950771.184000	352949025.03478	CCD S5 on	N	N
Observation start date	2009-03-09T01:51:45	2009-03-09T01:23:45	Number of optional ACIS chips dropped	0	0
[s] Observation end time (MET)	352960871.184000	352961663.79791	On-chip summing requested	N	N
Observation end date	2009-03-09T04:40:05	2009-03-09T04:54:23	Subarray requested	NONE	NONE
Read mode	TIMED	TIMED	Alternating exposures requested	N	N
			[s] Primary exposure time	0.000000	3.2

2.3 Aspect



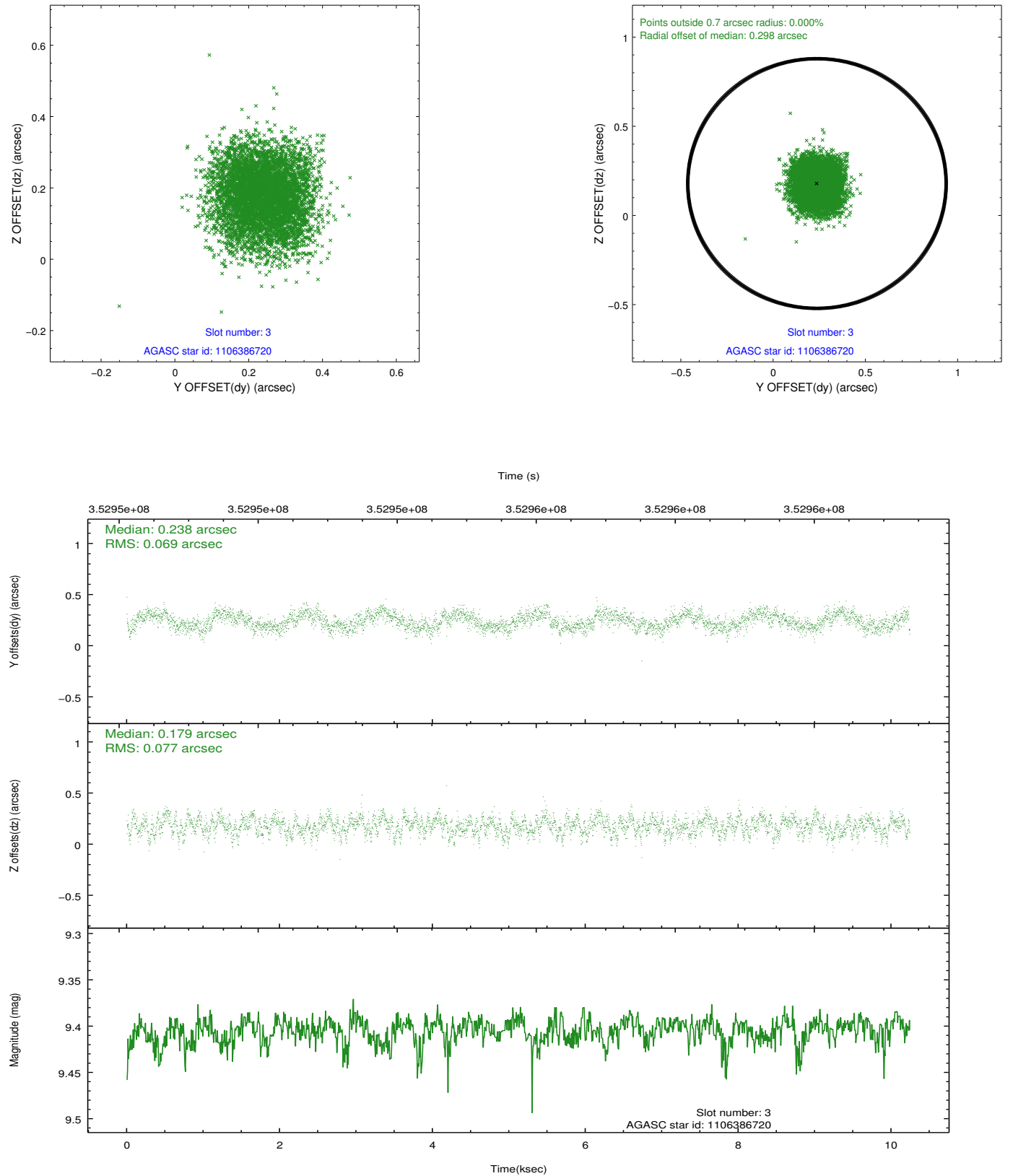


Slot Statistics

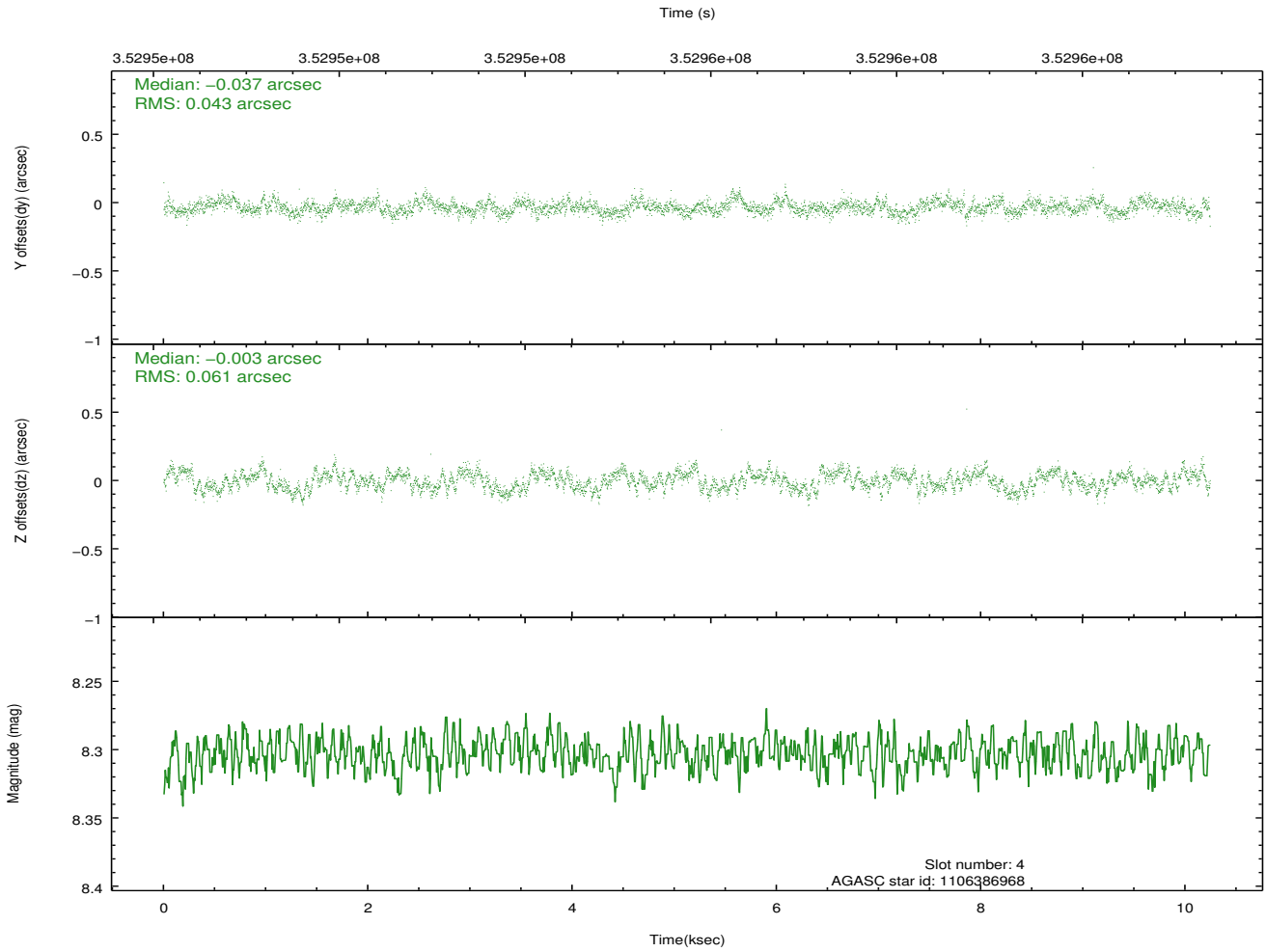
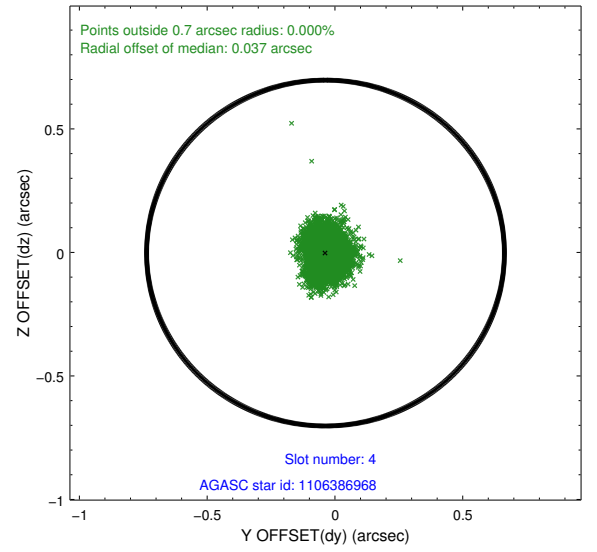
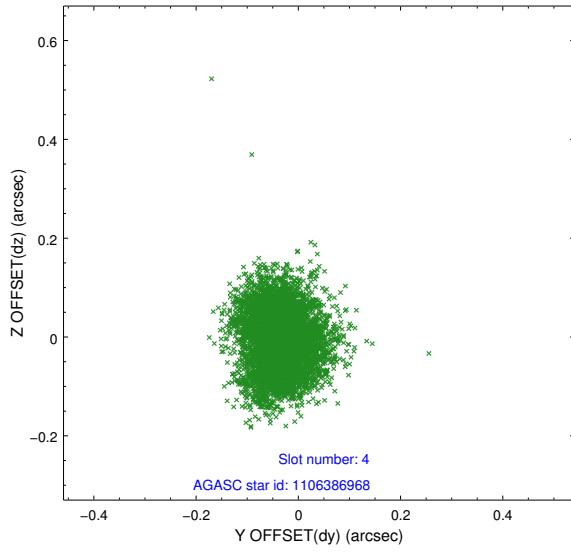
slot	status	id	mag	n_pts	med_dy	med_dz	dr1	dr2	ra	dec	mean_y	mean_z
0	FID	ACIS-S-2	6.90	2499	-0.090	-0.044	0.006	0.010	0.000000	0.000000	-767.91	-1738.82
1	FID	ACIS-S-4	6.98	2499	0.103	0.052	0.006	0.010	0.000000	0.000000	2145.40	169.12
2	FID	ACIS-S-6	7.12	2499	-0.042	-0.001	0.006	0.010	0.000000	0.000000	394.88	807.11
3	GUIDE	1106386720	9.40	4988	0.238	0.179	0.113	0.174	332.255624	-49.886675	-1289.66	-1457.45
4	GUIDE	1106386968	8.30	4998	-0.037	-0.003	0.080	0.125	331.530717	-49.686244	542.64	-1428.85
5	GUIDE	1106782200	8.17	4998	0.094	0.151	0.099	0.147	332.072999	-50.105429	-1221.47	-566.88
6	GUIDE	1106781000	9.48	4992	-0.159	-0.174	0.103	0.167	330.334845	-50.169904	2326.91	1315.15
7	GUIDE	1106780672	10.18	4986	-0.140	-0.154	0.184	0.296	330.884578	-50.630874	481.62	2283.82

2.4 Star Slots

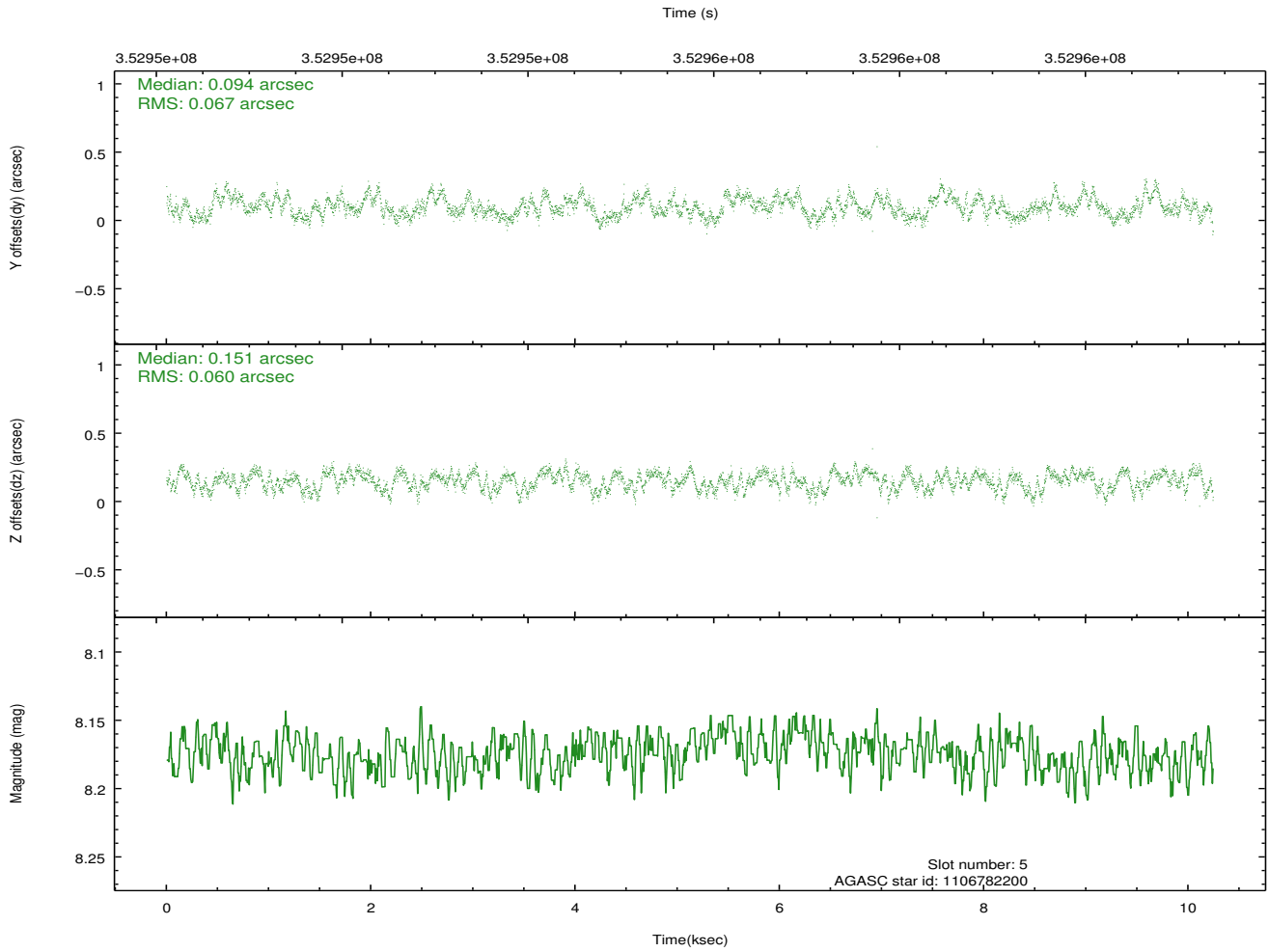
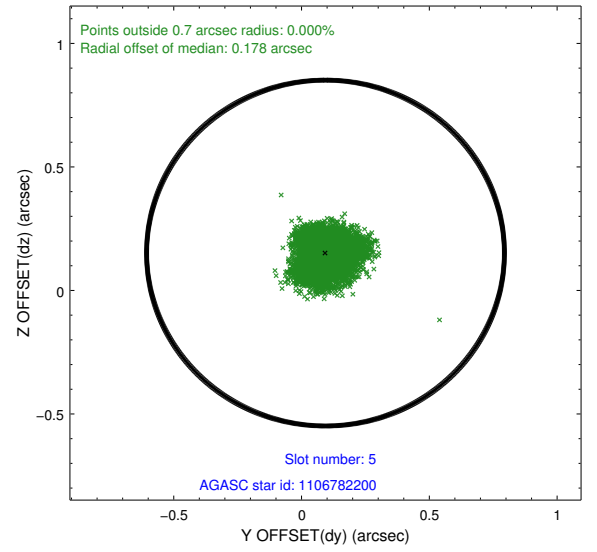
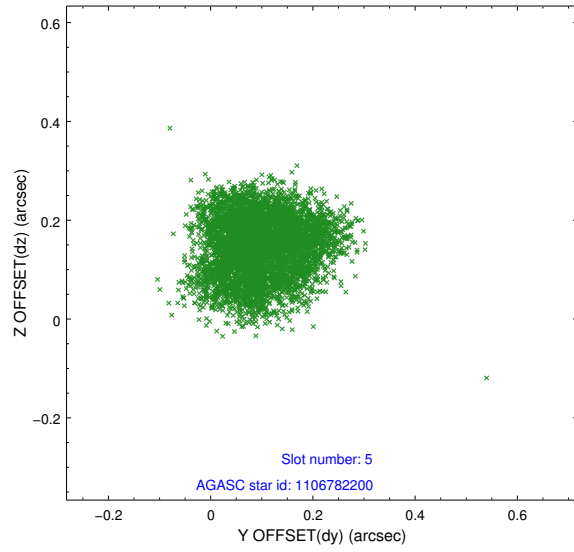
2.4.1 Slot 3



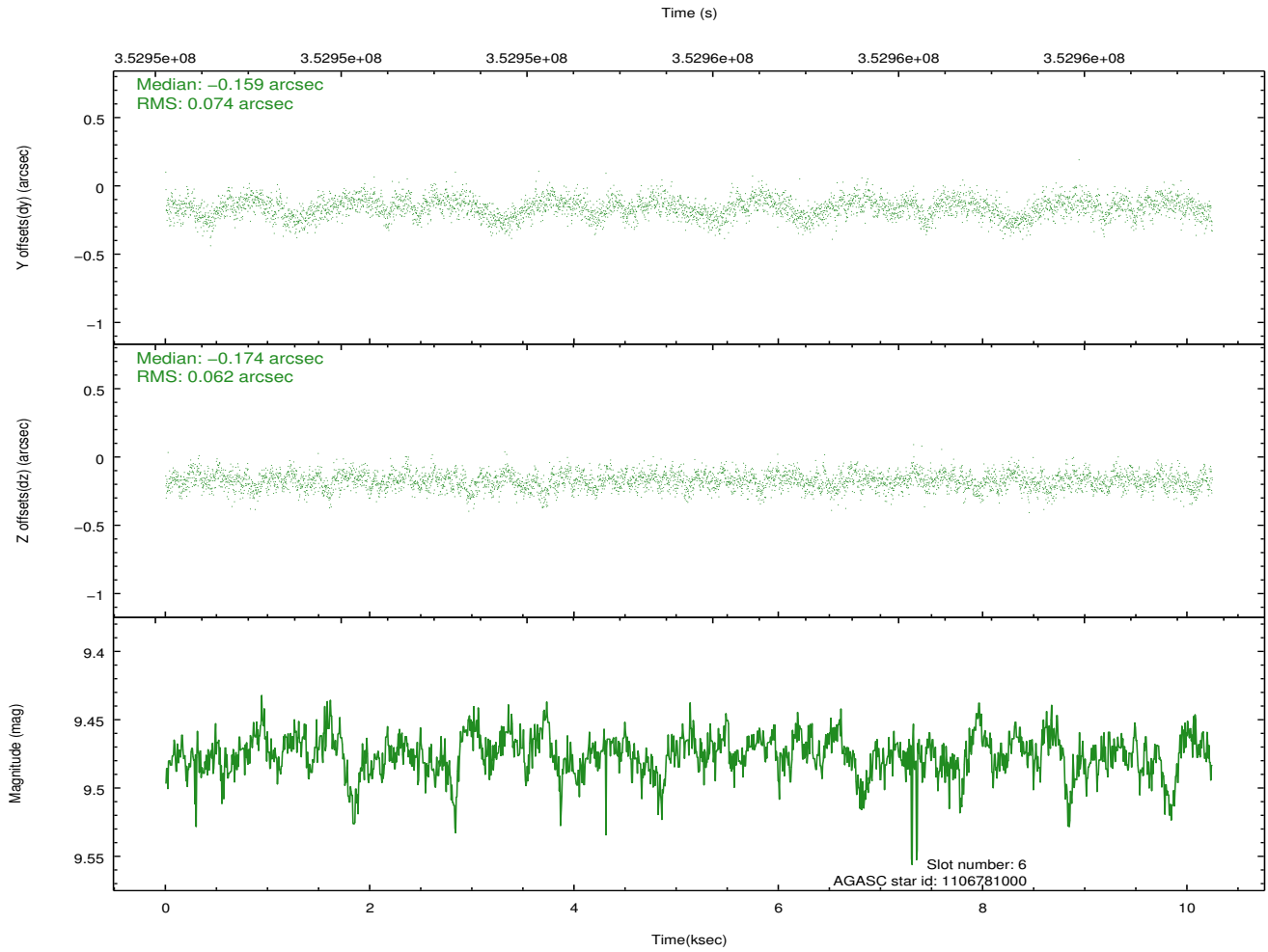
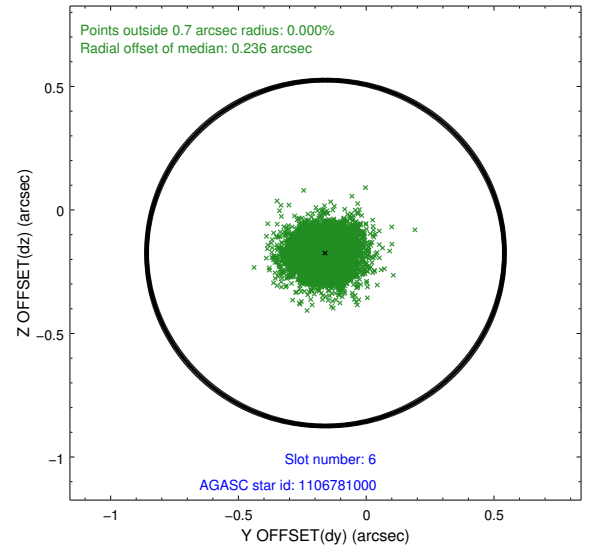
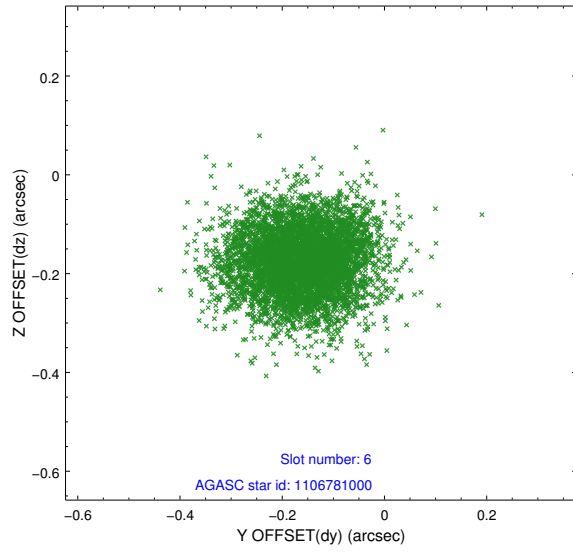
2.4.2 Slot 4



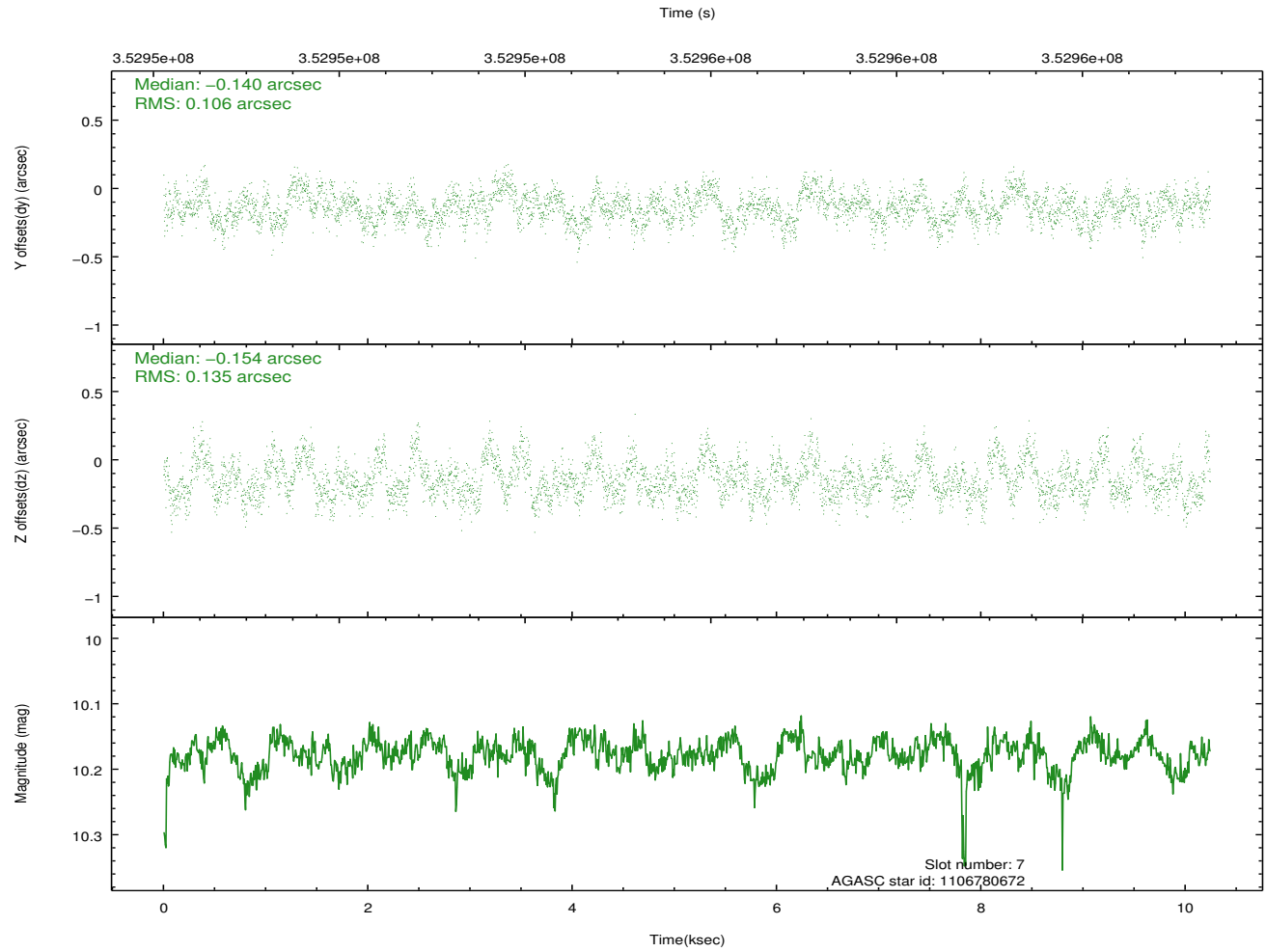
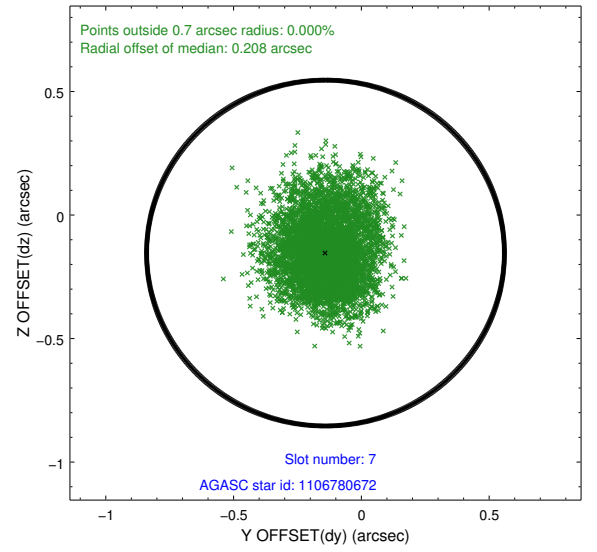
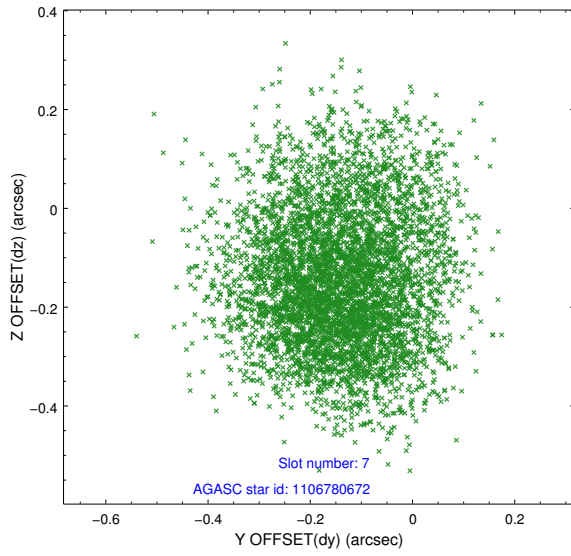
2.4.3 Slot 5



2.4.4 Slot 6

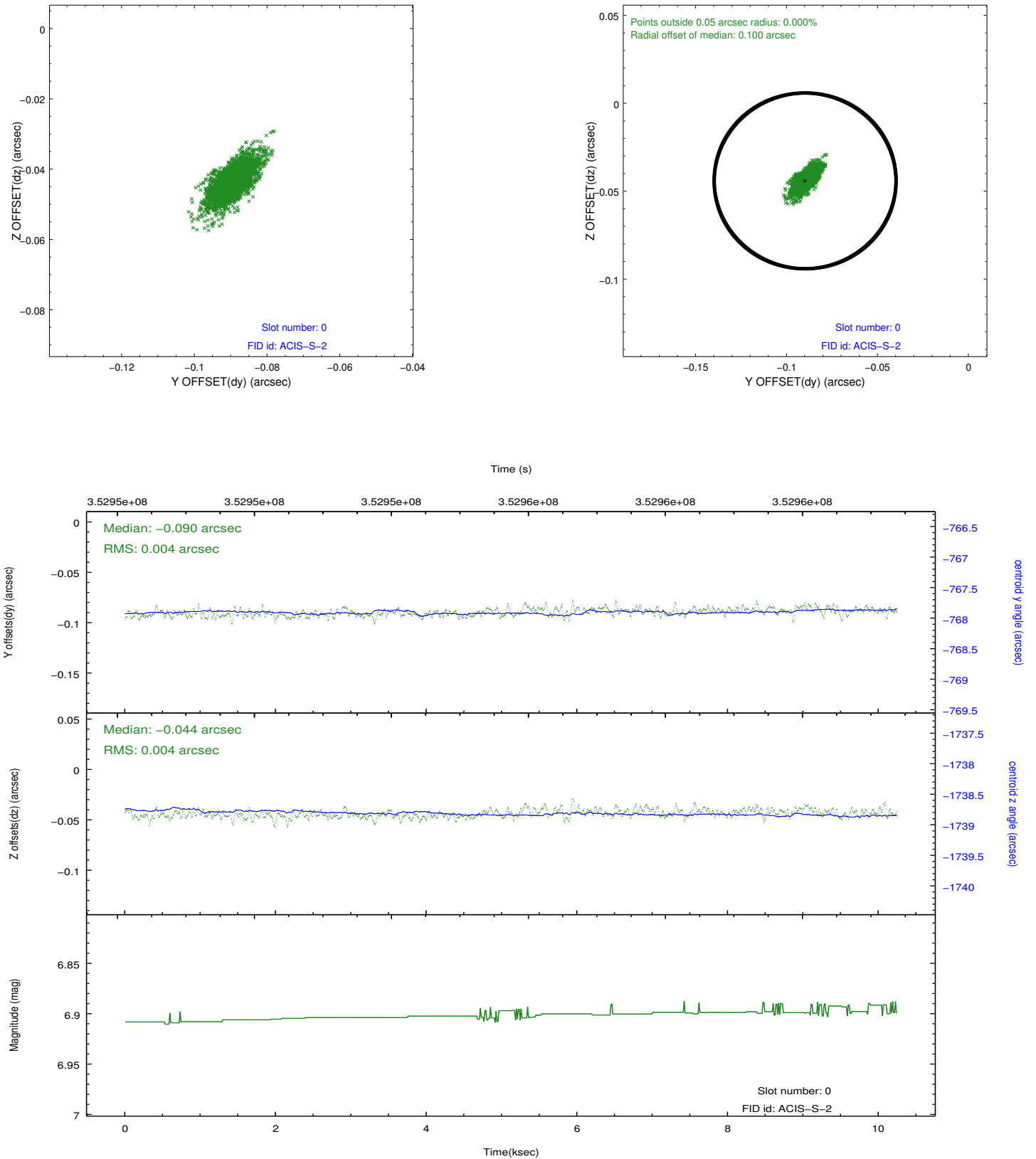


2.4.5 Slot 7

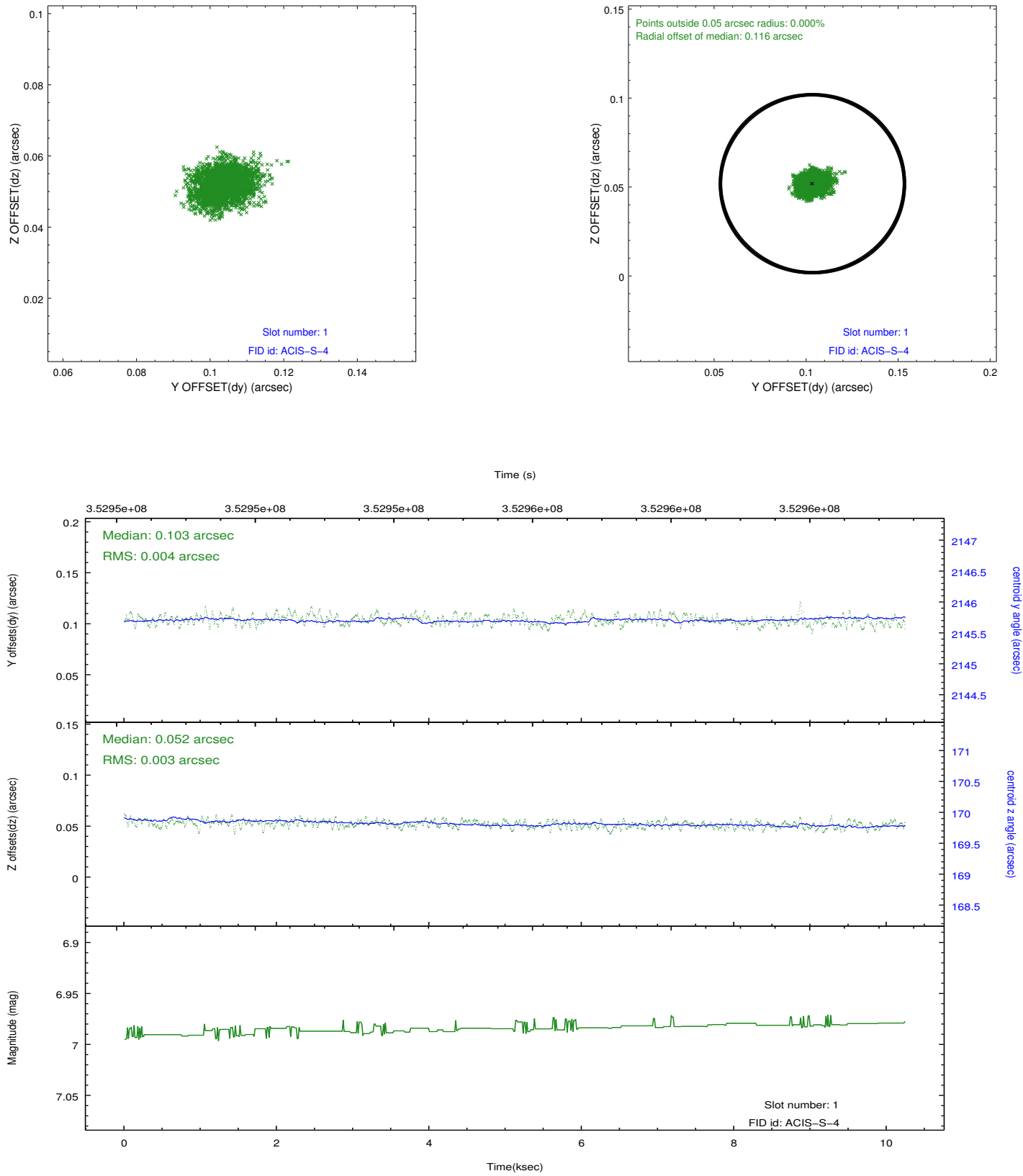


2.5 FID Slots

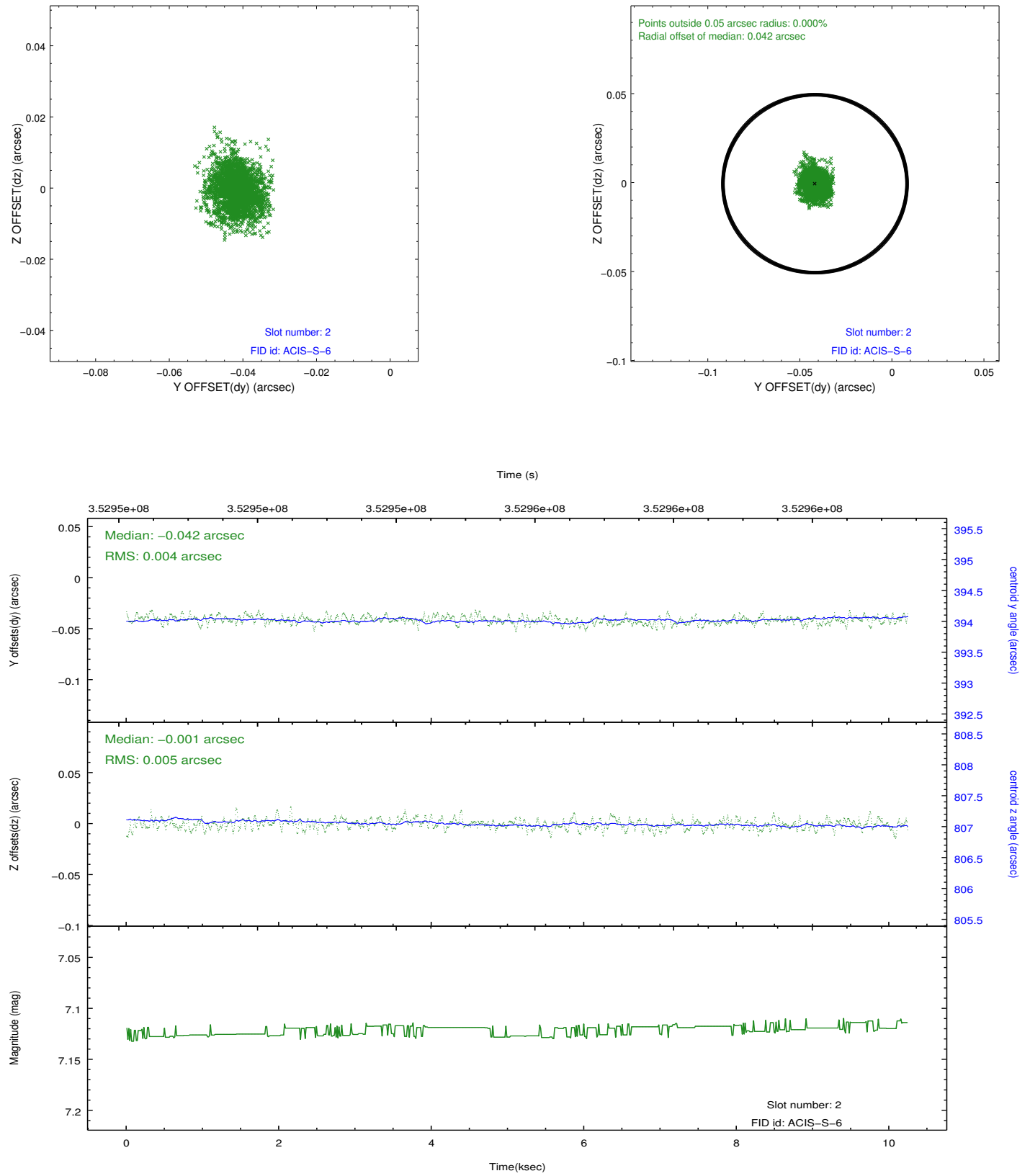
2.5.1 Slot 0



2.5.2 Slot 1



2.5.3 Slot 2



A Summary

A.1 Status

V&V Scientist	Joy Nichols
V&V Date (YYYY-MM-DD)	2012.06.07
V&V Edition	1
V&V Disposition and Status	OK
V&V Charge Time	10.2367999

A.2 Comments