

V&V Reference Report

L2 ASCDS Version : 8.4.4

Observation 10476 - L2 Version 3
Chandra X-Ray Center

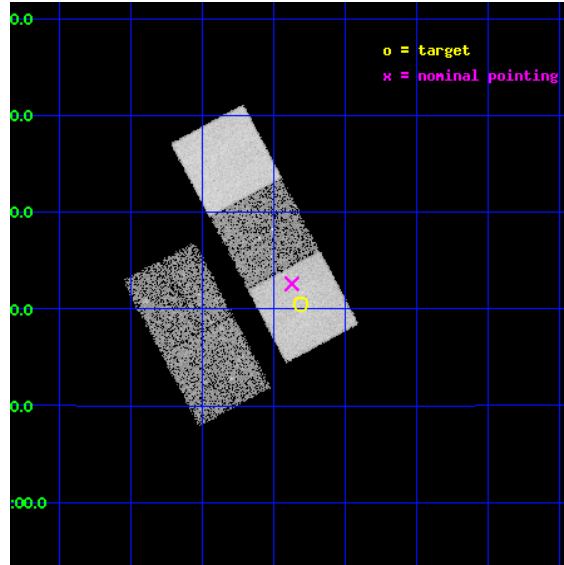
L2 Processing Date : Jun 1 2012

Contents

1	Front	2
2	OBI	3
2.1	OBI	3
2.1.1	Images	3
2.1.2	Bias	3
2.1.3	Parameters	4
2.1.4	Events	4
2.2	Compared Parameters	5
2.3	Aspect	6
2.4	Star Slots	9
2.4.1	Slot 3	9
2.4.2	Slot 5	10
2.4.3	Slot 6	11
2.4.4	Slot 7	12
2.5	FID Slots	13
2.5.1	Slot 0	13
2.5.2	Slot 1	14
2.5.3	Slot 2	15
A	Summary	16
A.1	Status	16
A.2	Comments	16

1 Front

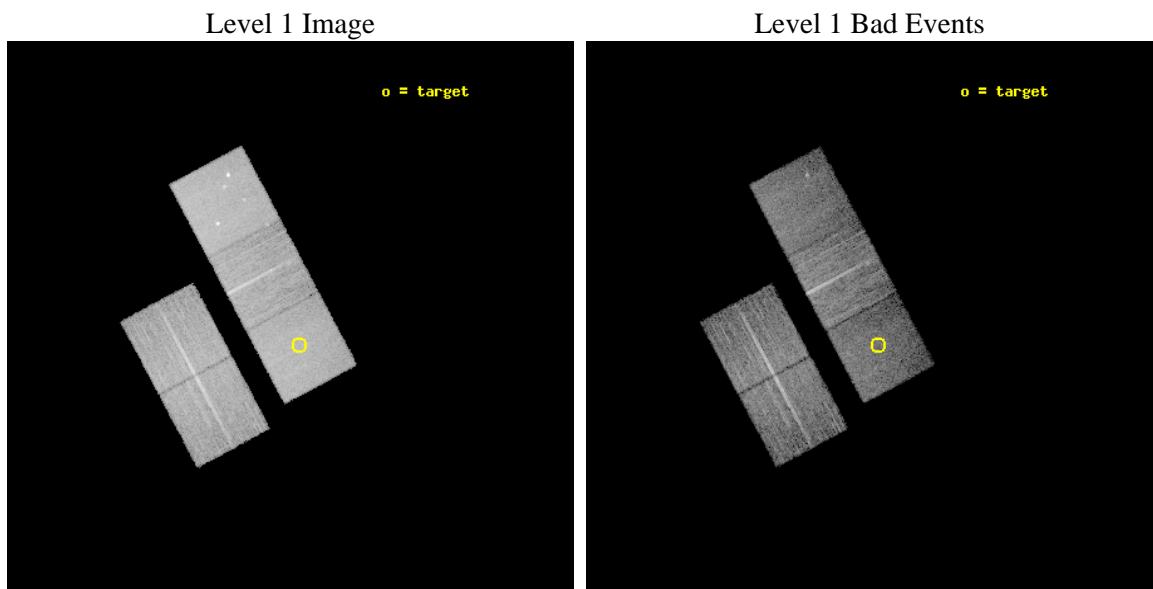
seq_num	800834	Sequence number
obs_id	10476	Observation id
title	The Origin and Evolution of Fossil Groups	Proposal title
observer	Dr. Eli Rykoff	Principal investigator
object	SDSS J1045+0420	Source name
dtcycle	0	
cycle	P	events from which exps? Prim/Second/Both
ra_targ	161.452083	Observer's specified target RA [deg]
dec_targ	4.342389	Observer's specified target Dec [deg]
ra_nom	161.46751630703	Nominal RA [deg]
dec_nom	4.3765889803861	Nominal Dec [deg]
roll_nom	61.967215088683	Nominal Roll [deg]
revision	3	Processing version of data
ontime	10037.593895912	Sum of GTIs [s]
livetime	9906.445342093	Livetime [s]
ontime2	10034.288725615	Sum of GTIs [s]
ontime3	10037.470775902	Sum of GTIs [s]
ontime5	10037.552855909	Sum of GTIs [s]
ontime6	10037.511815906	Sum of GTIs [s]
ontime7	10037.593895912	Sum of GTIs [s]
l2events	119167	Number of level 2 events



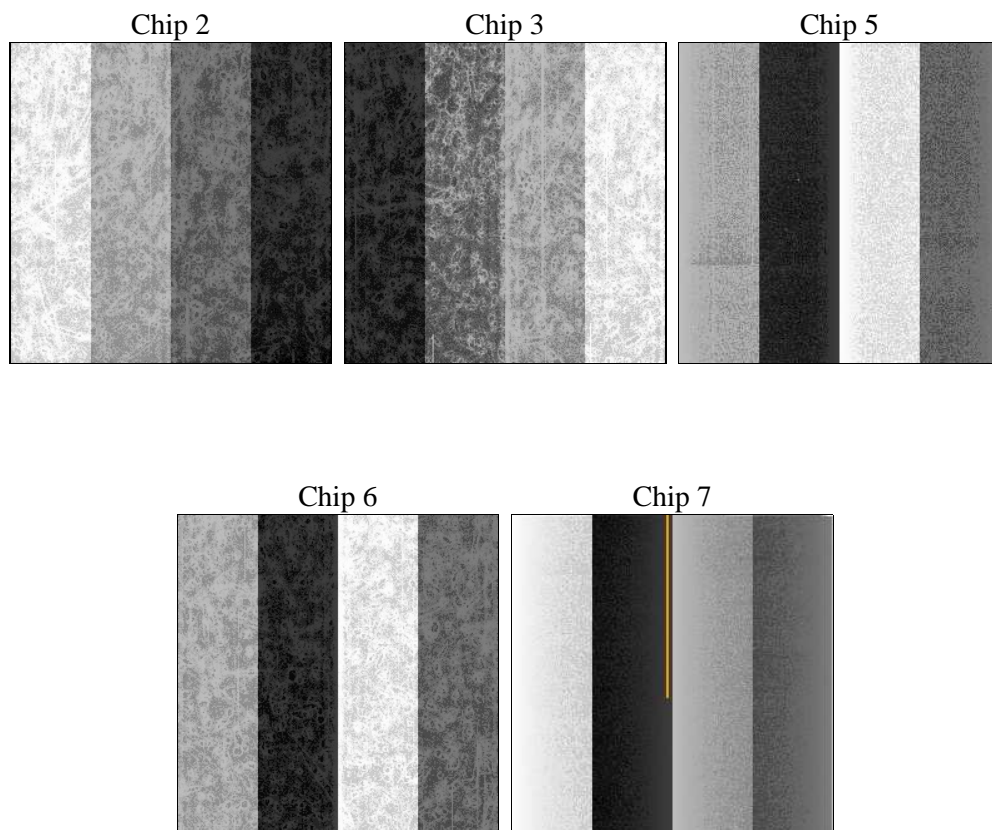
2 OBI

2.1 OBI

2.1.1 Images



2.1.2 Bias



2.1.3 Parameters

obi_num	0	Obi number	sched_exp_time	10000.000000	[s] Scheduled observation exposure time
ascdsver	8.4.4	Processing system revision	ontime	10037.593895912	Sum of GTIs [s]
caldbver	4.4.9	 	ontime2	10034.288725615	Sum of GTIs [s]
date	2012-06-02T00:12:45	Date and time of file creation	ontime3	10037.470775902	Sum of GTIs [s]
revision	3	Processing version of data	ontime5	10037.552855909	Sum of GTIs [s]
			ontime6	10037.511815906	Sum of GTIs [s]
			ontime7	10037.593895912	Sum of GTIs [s]
			l1events	460937	Number of level 1 events

2.1.4 Events

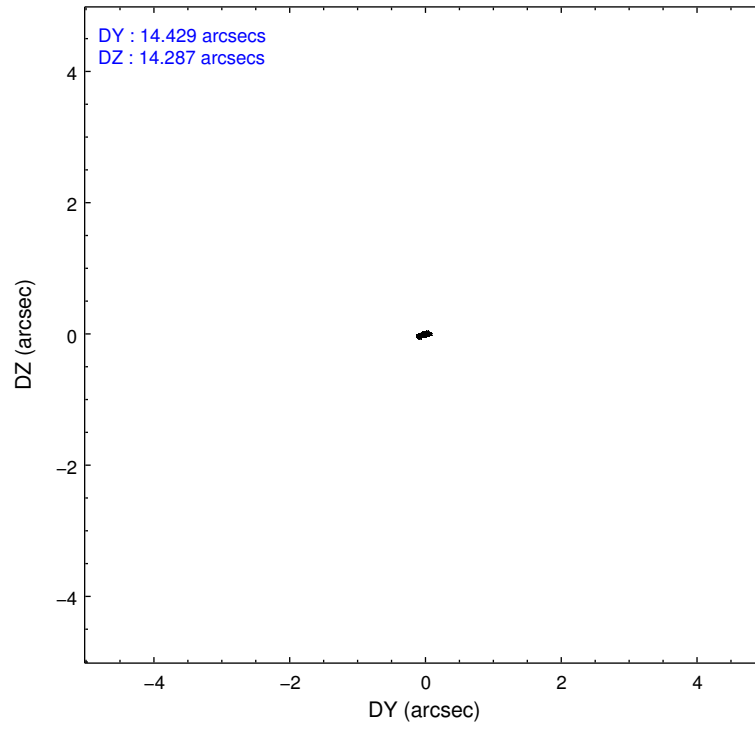
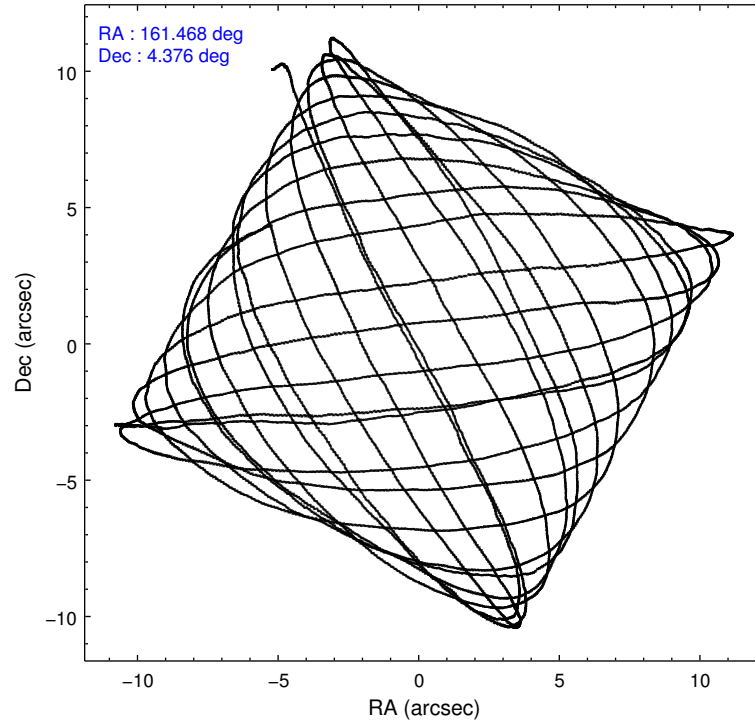
	ccd 2	ccd 3	ccd 5	ccd 6	ccd 7
level 1 events	85733	78313	117951	83897	95043
rejected events	77463	70634	58624	75133	50780
rejected %	90%	90%	49%	89%	53%

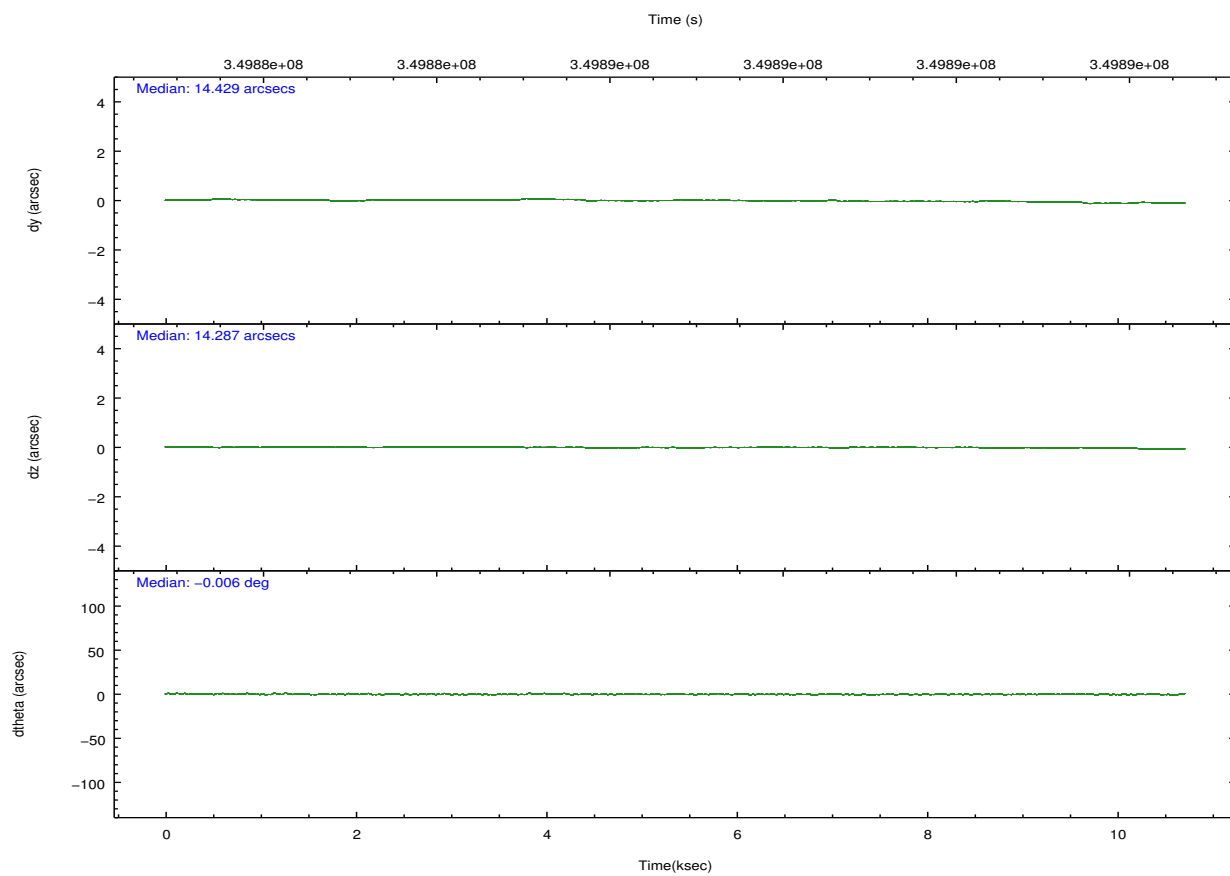
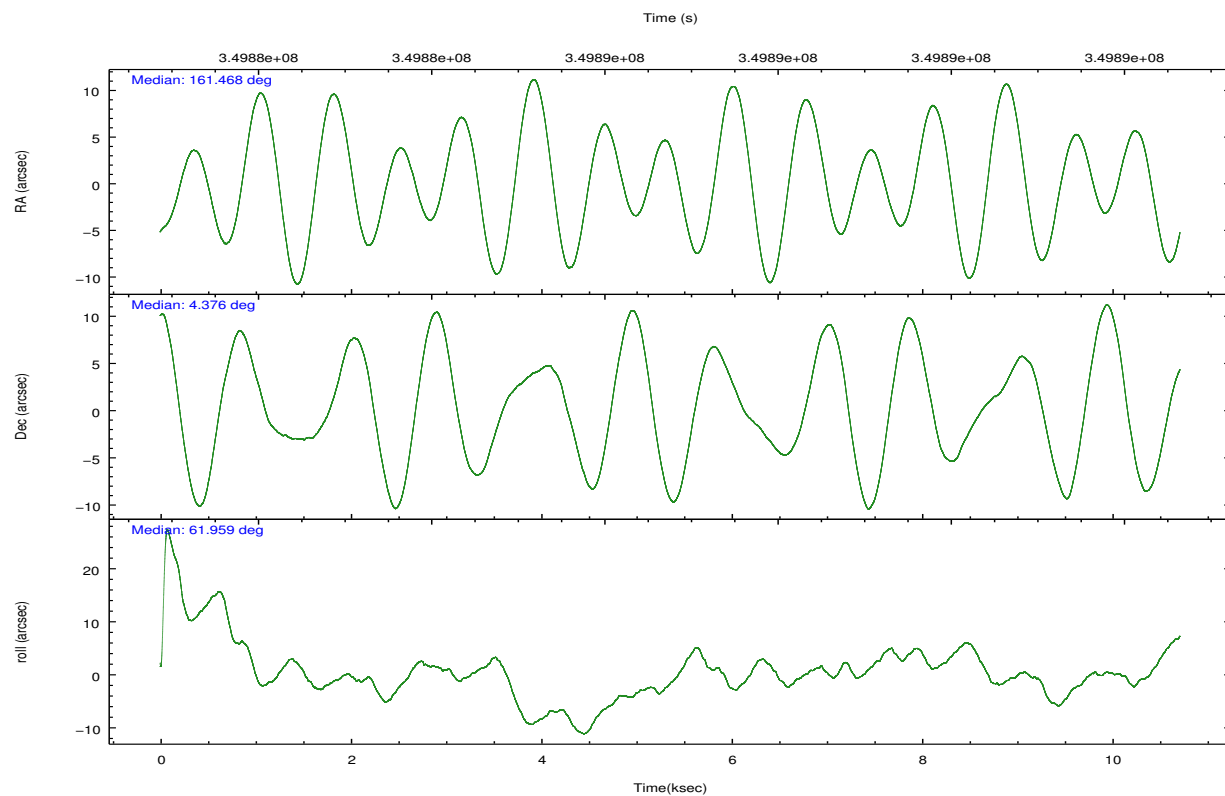
	ccd 2	ccd 3	ccd 5	ccd 6	ccd 7
grade 0 events	3109	2710	6052	3177	4406
	3%	3%	5%	3%	4%
grade 1 events	42	38	231	60	132
	0%	0%	0%	0%	0%
grade 2 events	1975	1656	18169	1942	9278
	2%	2%	15%	2%	9%
grade 3 events	881	850	2347	948	4068
	1%	1%	1%	1%	4%
grade 4 events	891	890	2277	911	3947
	1%	1%	1%	1%	4%
grade 5 events	2741	3406	9114	3335	9867
	3%	4%	7%	3%	10%
grade 6 events	1416	1575	30502	1789	22575
	1%	2%	25%	2%	23%
grade 7 events	74678	67188	49259	71735	40770
	87%	85%	41%	85%	42%

2.2 Compared Parameters

Parameter	Planned	Actual	Parameter	Planned	Actual
Instrument	ACIS	ACIS	Obspar format version number	7	7
Detector	ACIS-23567	ACIS-23567	Obspar file type	PREDICTED	ACTUAL
Grating	NONE	NONE	Obspar update status	NONE	UPDATED
Data mode	VFAINT	VFAINT	CCD I0 on	N	N
Observation mode	POINTING	POINTING	CCD I1 on	N	N
[deg] Pointing RA	161.468878	161.4675163070292	CCD I2 on	O1	Y
[deg] Pointing Dec	4.349300	4.376588980386123	CCD I3 on	O2	Y
[deg] Pointing Roll	61.810521	61.96721508868335	CCD S0 on	N	N
[mm] SIM focus pos	-0.684267	-0.6828225247311905	CCD S1 on	Y	Y
[mm] SIM defocus	0	0.001444936568705701	CCD S2 on	Y	Y
[mm] SIM translation stage pos	-190.132523	-190.1425803651734	CCD S3 on	Y	Y
[mm] SIM translation stage offset	0	0.01005778216563158	CCD S4 on	N	N
[s] Observation start time (MET)	349882110.184000	349880913.39507	CCD S5 on	N	N
Observation start date	2009-02-01T13:27:24	2009-02-01T13:08:33	Number of optional ACIS chips dropped	0	0
[s] Observation end time (MET)	349892110.184000	349893136.52068	On-chip summing requested	N	N
Observation end date	2009-02-01T16:14:04	2009-02-01T16:32:16	Subarray requested	NONE	NONE
Read mode	TIMED	TIMED	Alternating exposures requested	N	N
			[s] Primary exposure time	0.000000	3.1

2.3 Aspect



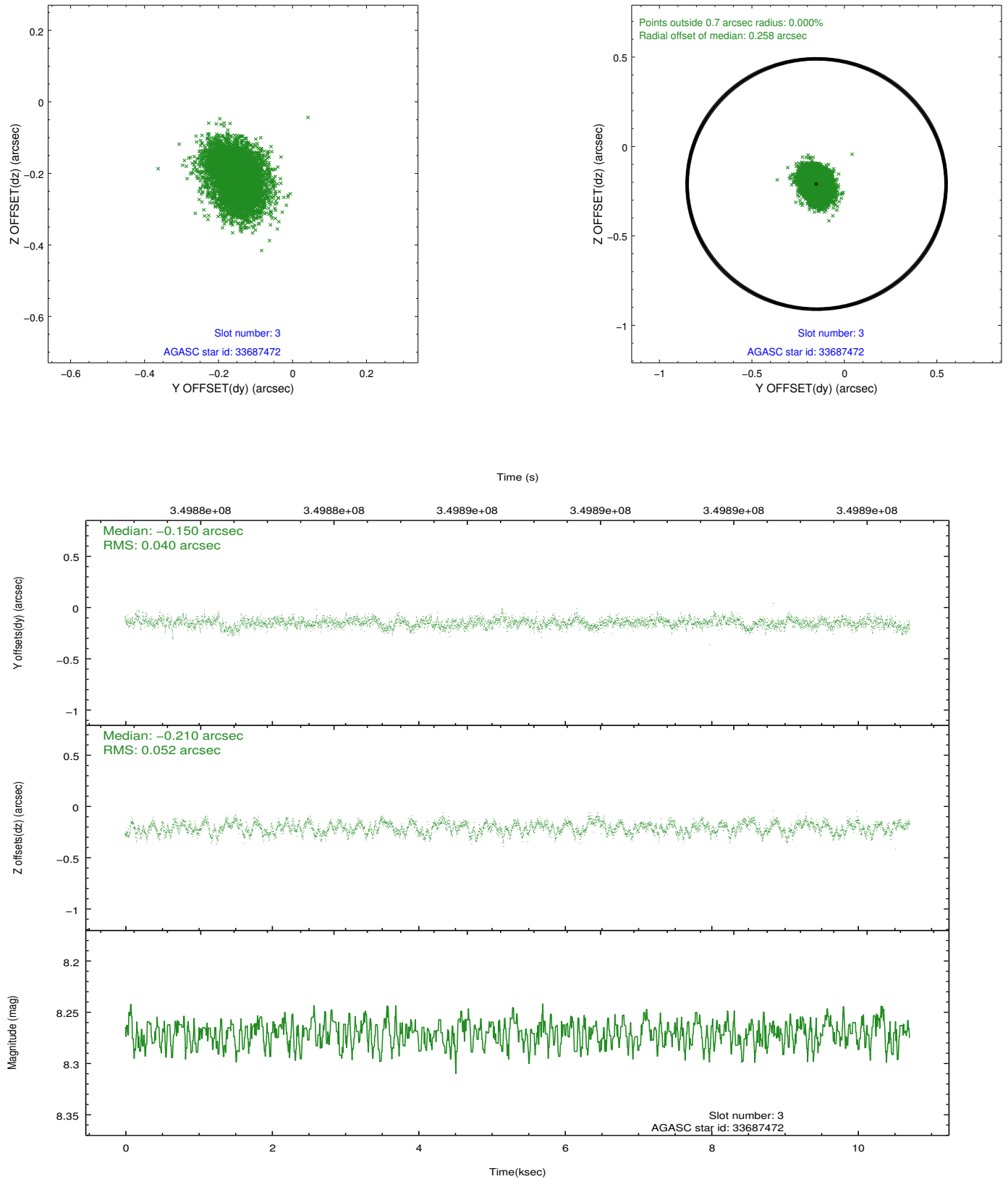


Slot Statistics

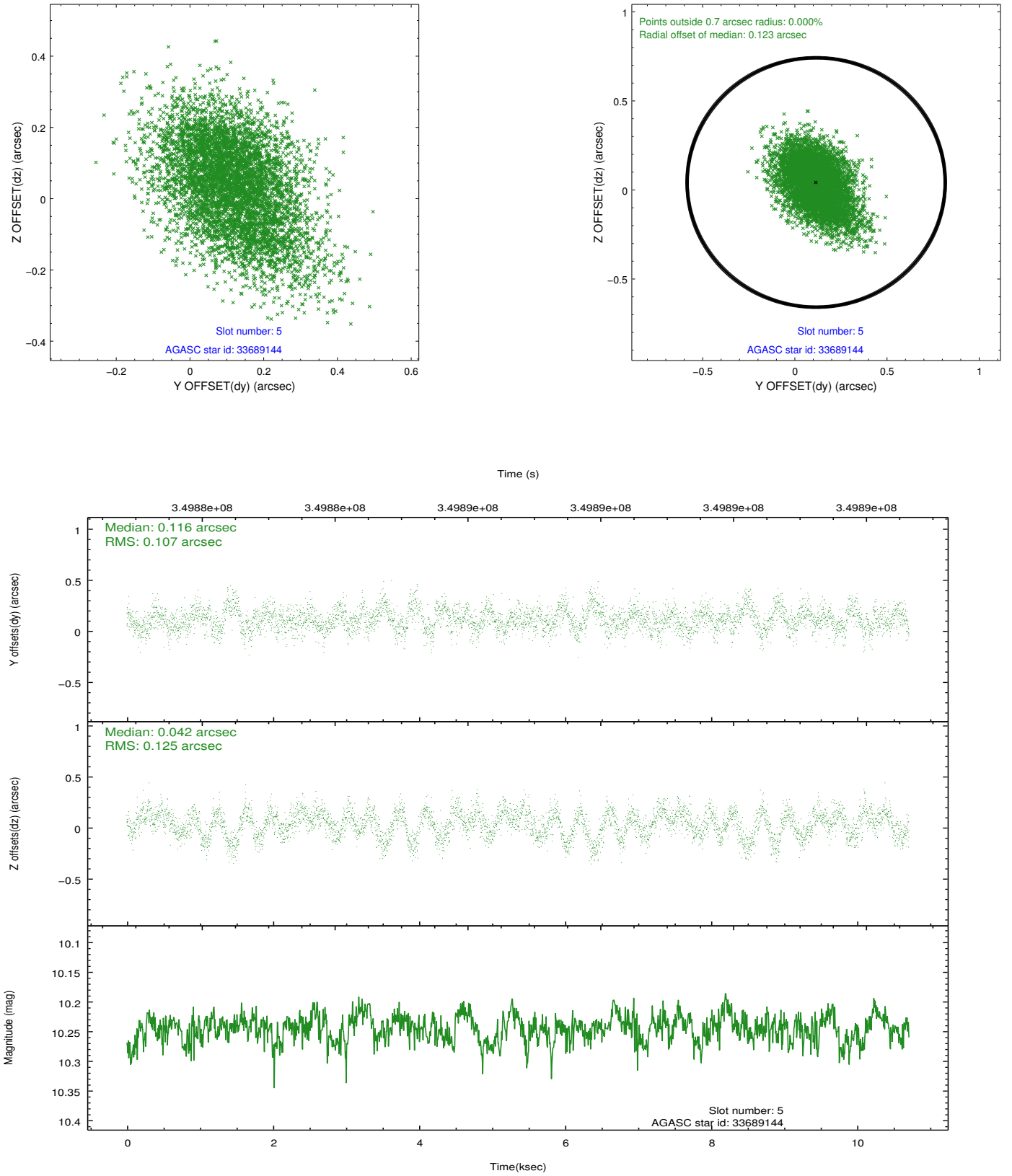
slot	status	id	mag	n_pts	med_dy	med_dz	dr1	dr2	ra	dec	mean_y	mean_z
0	FID	ACIS-S-1	7.02	2613	0.062	-0.013	0.006	0.011	0.000000	0.000000	928.73	-1731.23
1	FID	ACIS-S-5	7.06	2614	-0.150	0.037	0.006	0.011	0.000000	0.000000	-1820.22	165.86
2	FID	ACIS-S-6	7.17	2613	0.067	-0.013	0.006	0.011	0.000000	0.000000	393.75	810.33
3	GUIDE	33687472	8.27	5221	-0.150	-0.210	0.070	0.112	161.250046	4.338066	-406.34	673.16
4	OMITTED		0.00	0	0.000	0.000	0.000	0.000	0.000000	0.000000	0.00	0.00
5	GUIDE	33689144	10.24	5202	0.116	0.042	0.172	0.288	161.784866	4.655818	1508.90	-477.69
6	GUIDE	33691848	7.67	5223	0.080	0.147	0.064	0.103	161.306152	3.729995	-2240.31	-538.01
7	GUIDE	33691944	9.21	5216	-0.044	0.026	0.092	0.148	161.673612	4.451001	669.84	-474.31

2.4 Star Slots

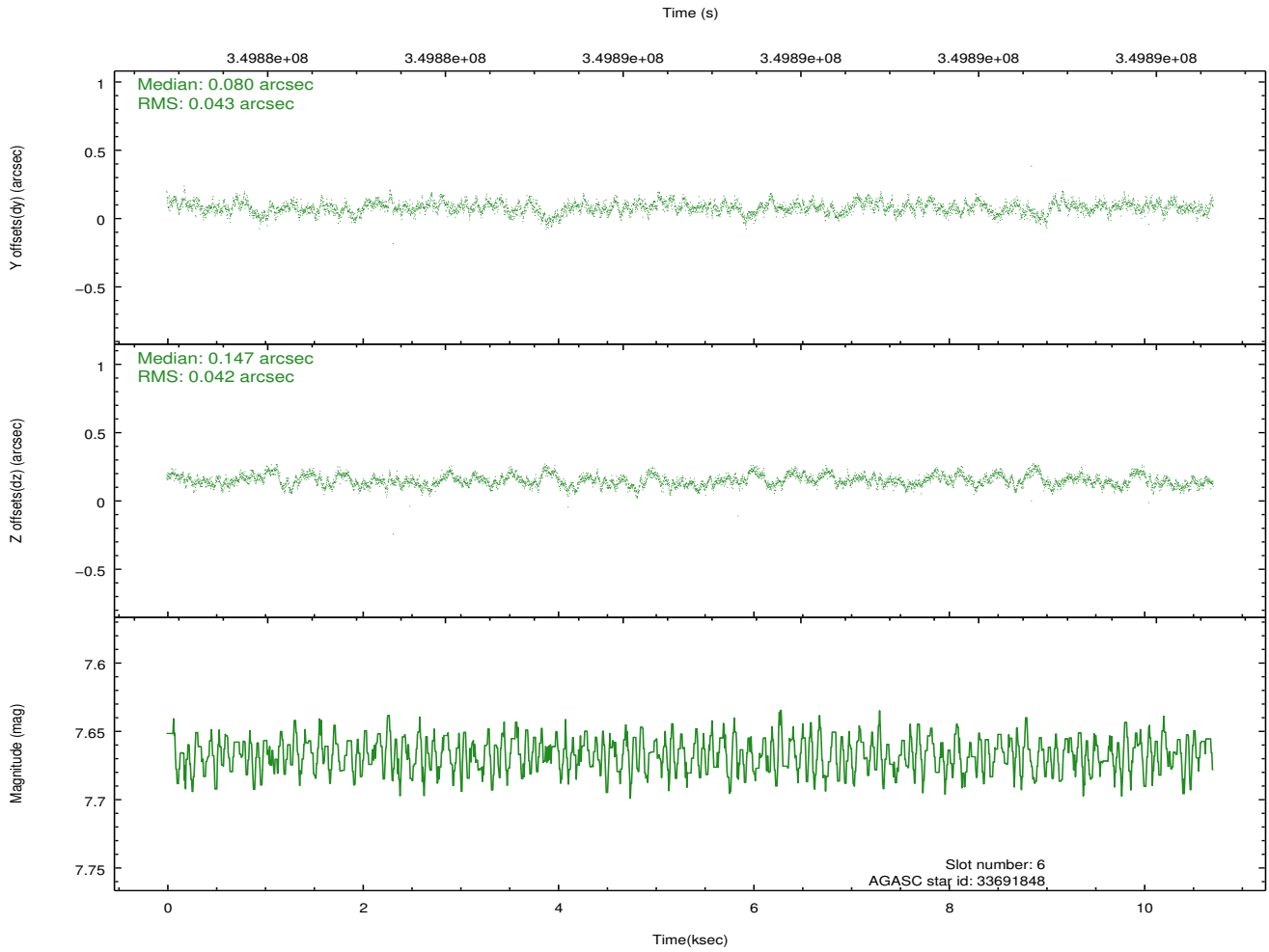
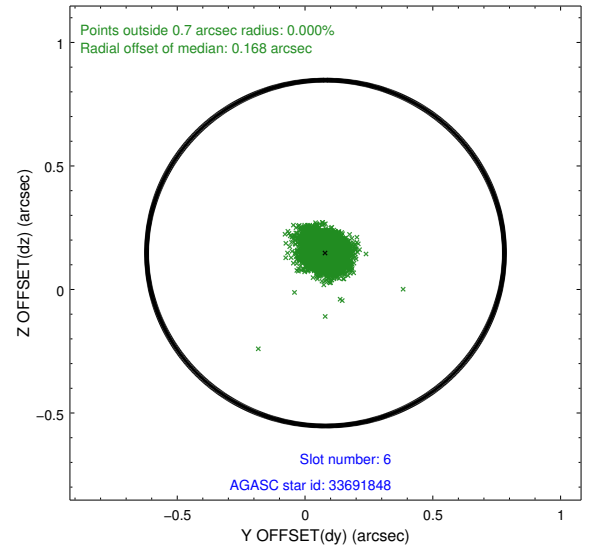
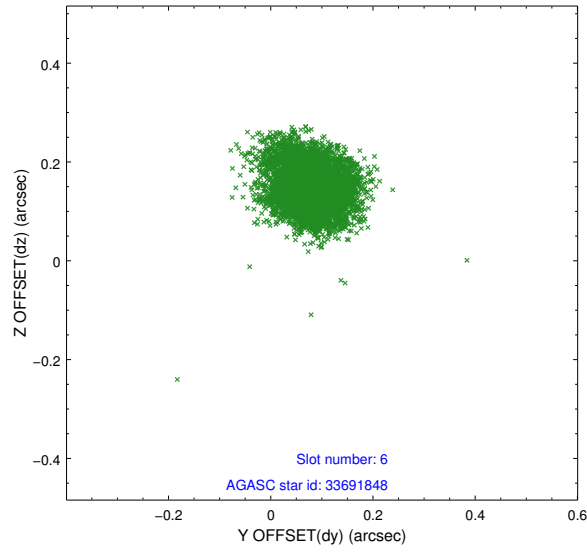
2.4.1 Slot 3



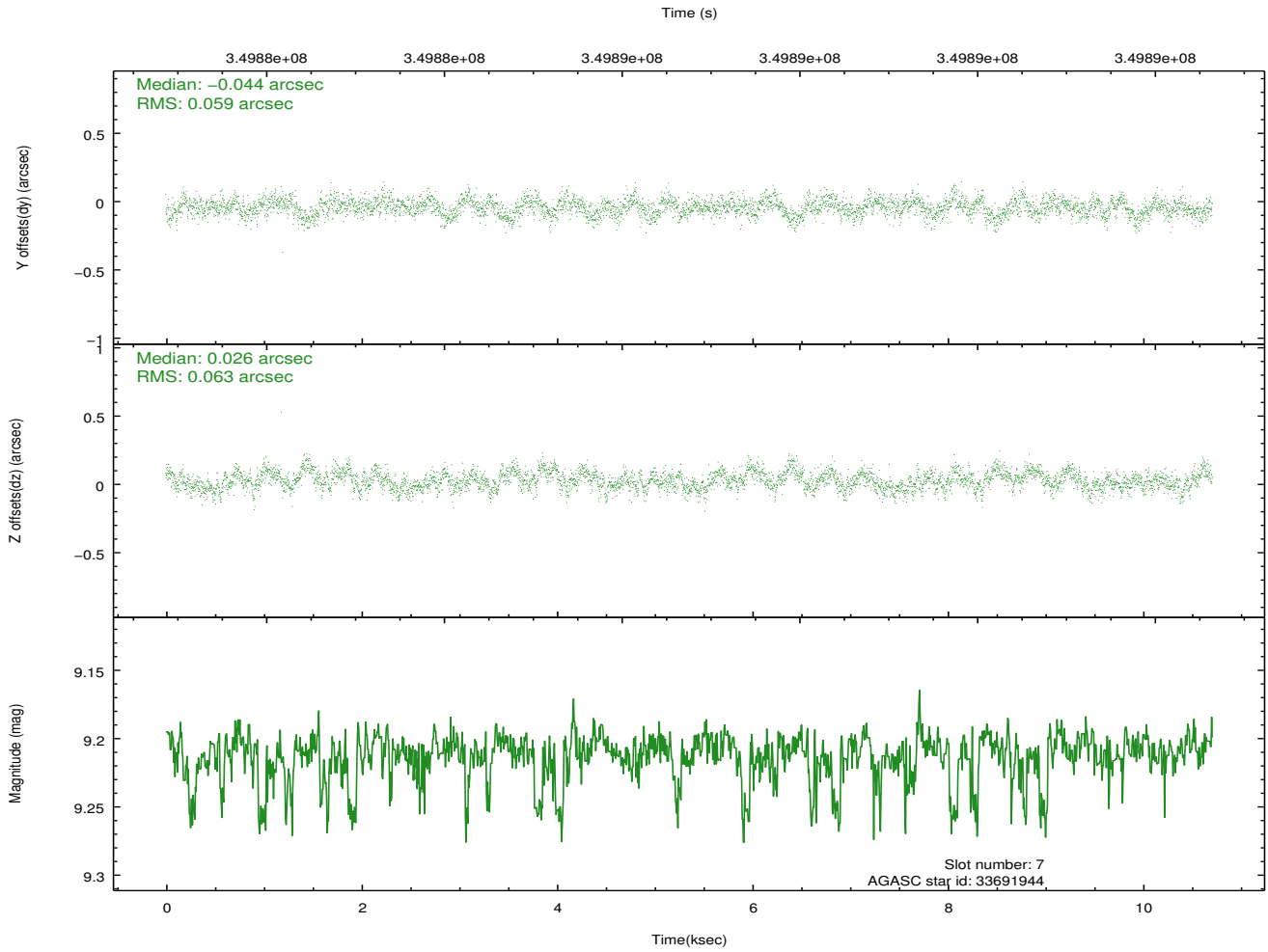
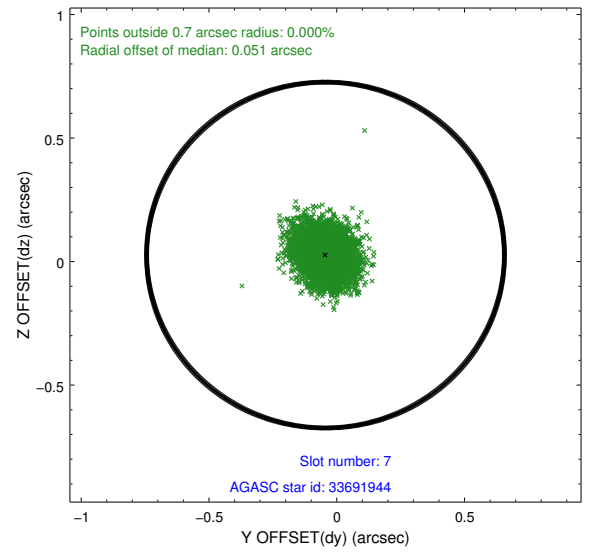
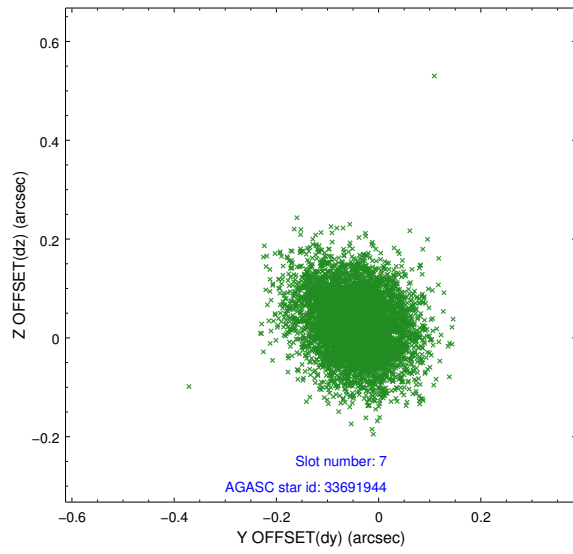
2.4.2 Slot 5



2.4.3 Slot 6

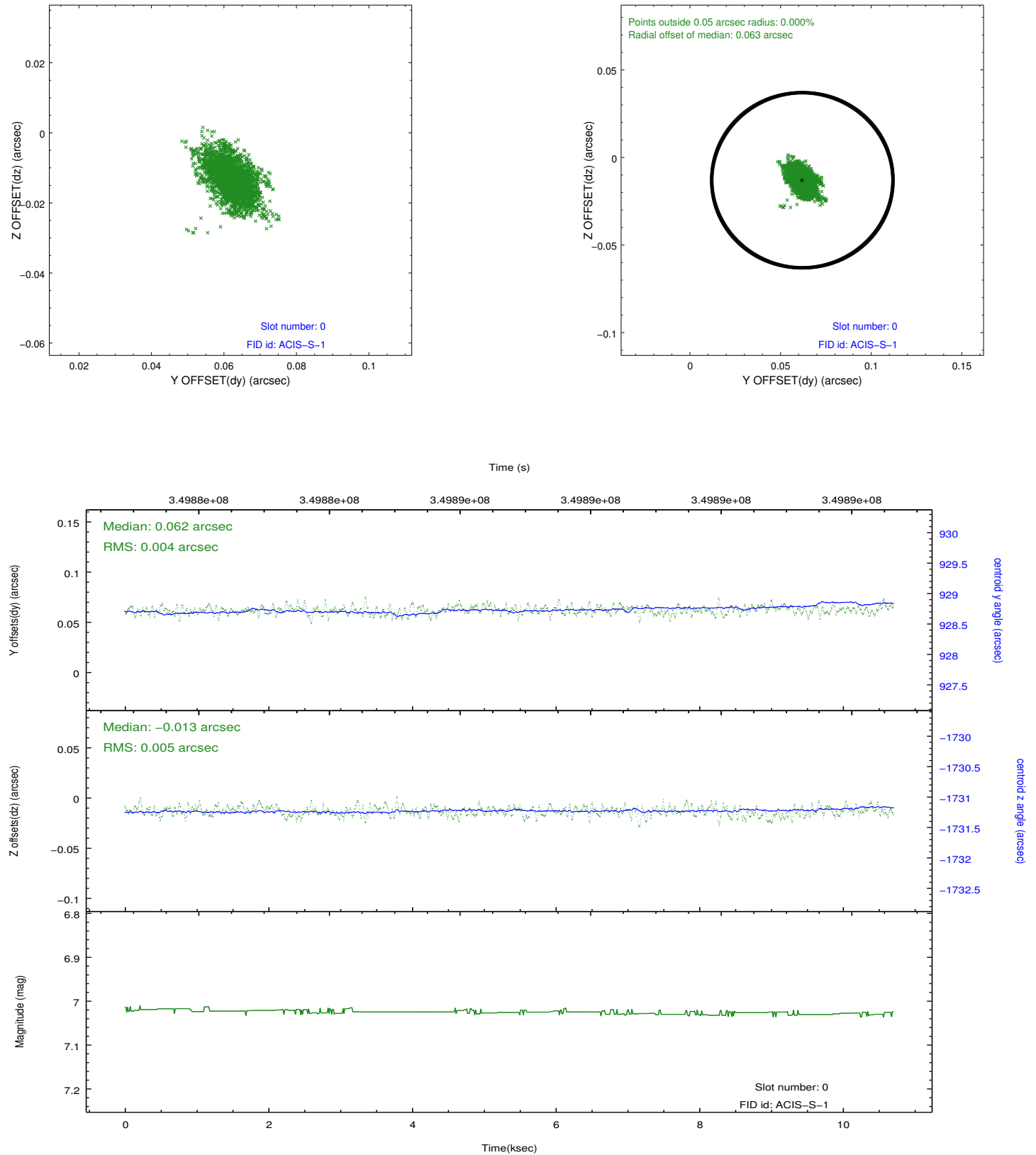


2.4.4 Slot 7

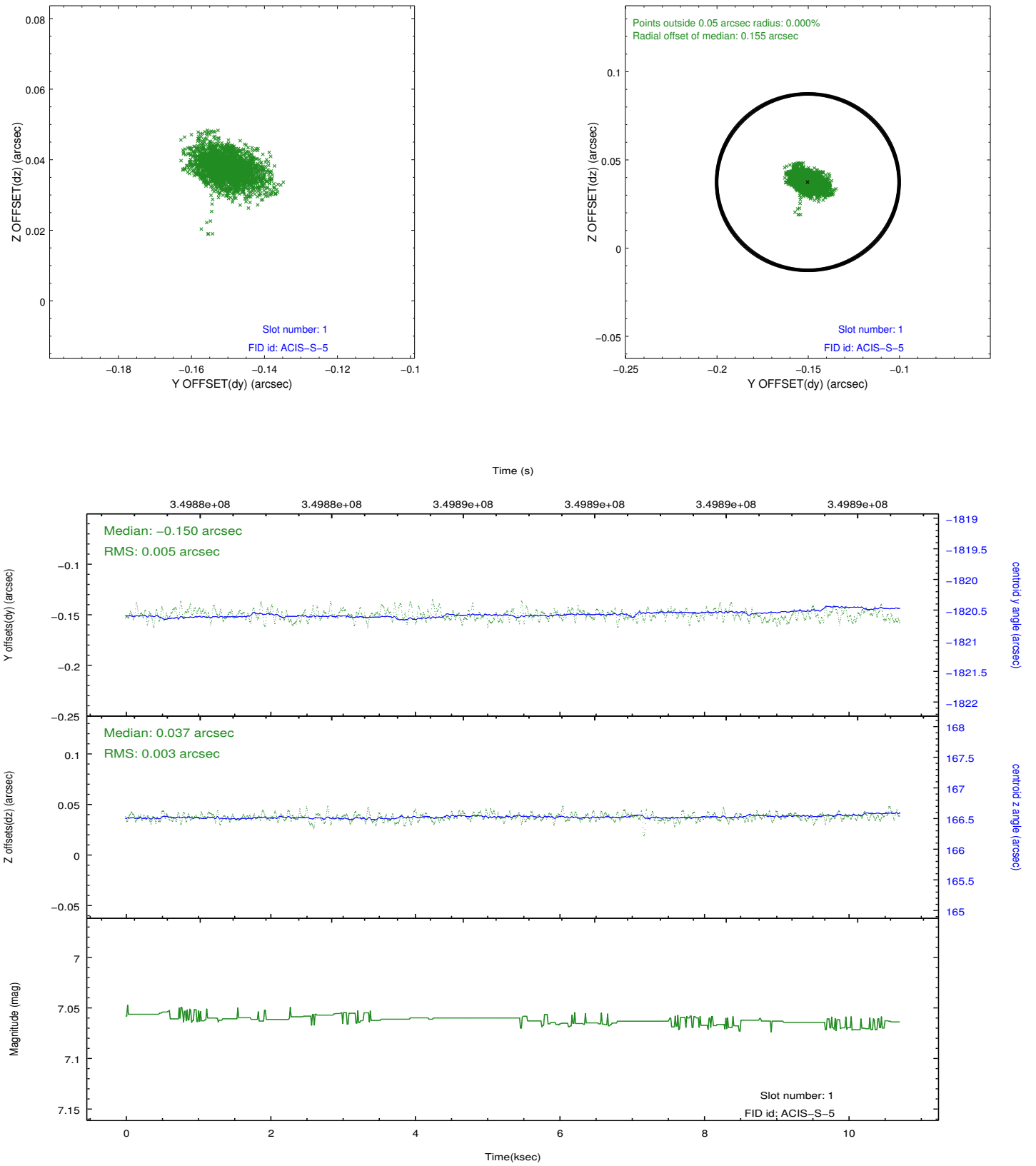


2.5 FID Slots

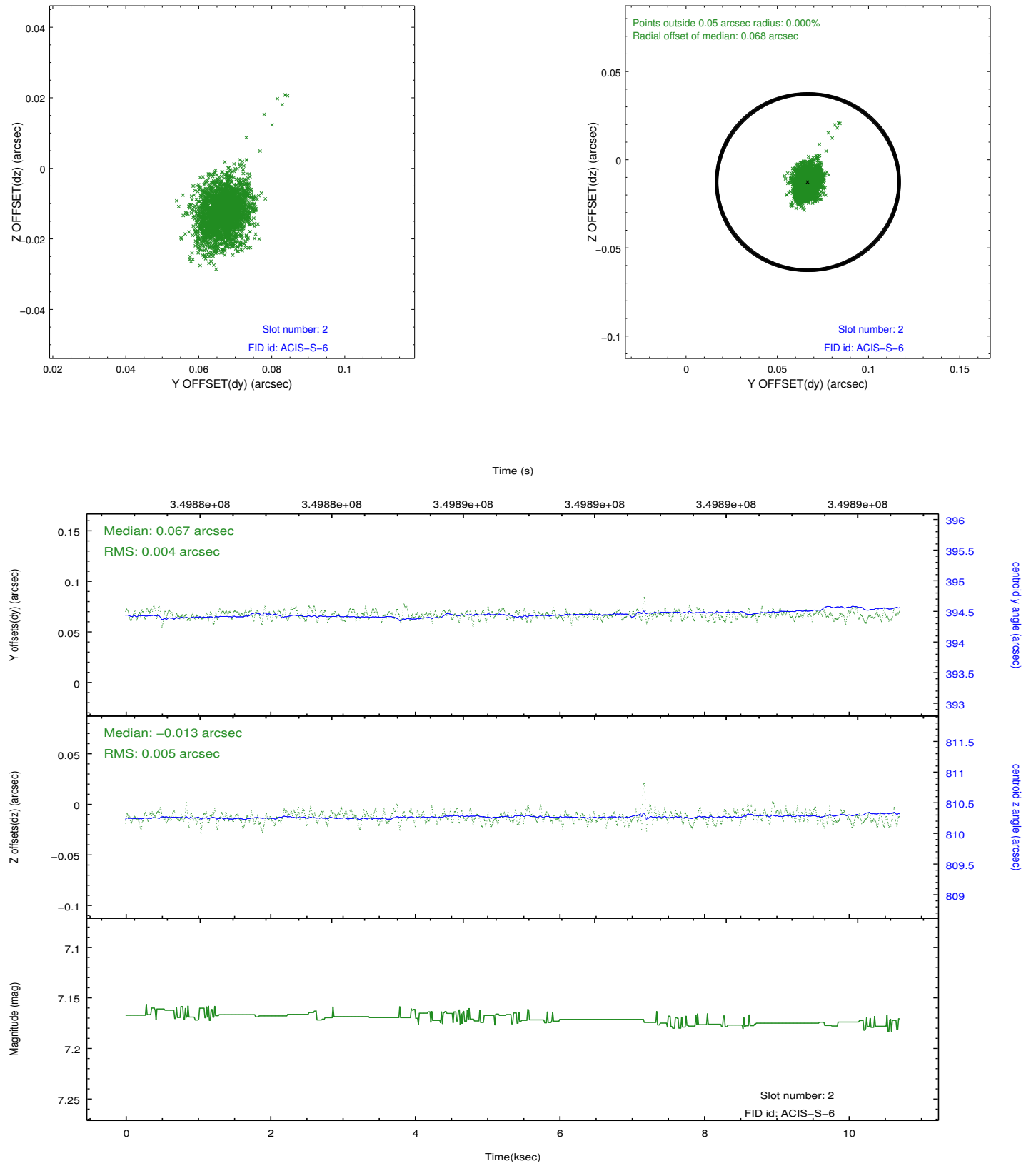
2.5.1 Slot 0



2.5.2 Slot 1



2.5.3 Slot 2



A Summary

A.1 Status

V&V Scientist	Beth Sundheim
V&V Date (YYYY-MM-DD)	2012.06.06
V&V Edition	1
V&V Disposition and Status	OK
V&V Charge Time	10.0378

A.2 Comments

The guide star in slot 4 was removed from the aspect solution due to poor data quality. The aspect solution is improved by the removal of this star from the solution.