

V&V Reference Report

L2 ASCDS Version : 8.4.4

Observation 10346 - L2 Version 2
Chandra X-Ray Center

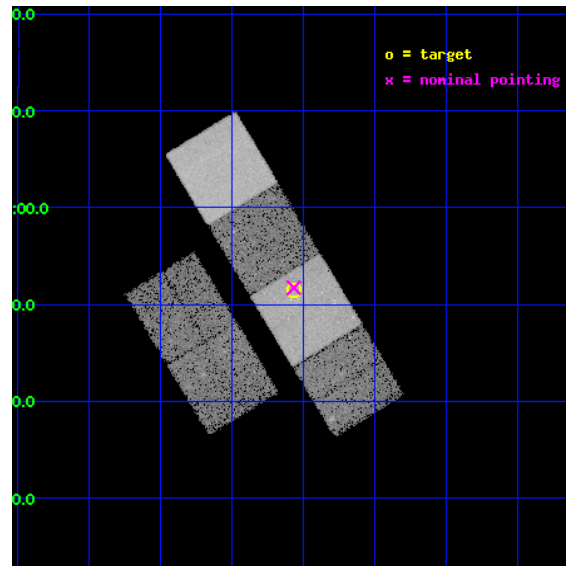
L2 Processing Date : May 29 2012

Contents

1	Front	2
2	OBI	3
2.1	OBI	3
2.1.1	Images	3
2.1.2	Bias	3
2.1.3	Parameters	4
2.1.4	Events	4
2.2	Compared Parameters	5
2.3	Aspect	6
2.4	Star Slots	9
2.4.1	Slot 3	9
2.4.2	Slot 4	10
2.4.3	Slot 5	11
2.4.4	Slot 6	12
2.4.5	Slot 7	13
2.5	FID Slots	14
2.5.1	Slot 0	14
2.5.2	Slot 1	15
2.5.3	Slot 2	16
A	Summary	17
A.1	Status	17
A.2	Comments	17

1 Front

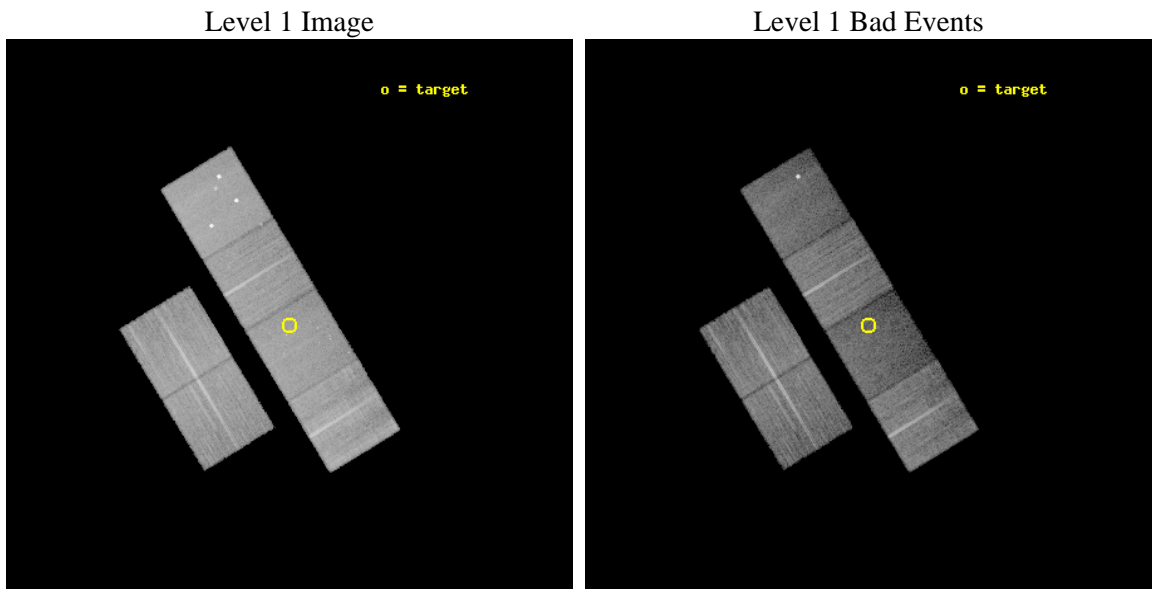
seq_num	701889	Sequence number
obs_id	10346	Observation id
title	Evolution of Activity in Massive Gas-rich Mergers: The X-ray Perspective	Proposal title
observer	Prof. Sylvain Veilleux	Principal investigator
object	F09039+0503	Source name
dtcycle	0	
cycle	P	events from which exps? Prim/Second/Both
ra_targ	136.642083	Observer's specified target RA [deg]
dec_targ	4.857222	Observer's specified target Dec [deg]
ra_nom	136.64205282013	Nominal RA [deg]
dec_nom	4.8620820241015	Nominal Dec [deg]
roll_nom	58.777901729102	Nominal Roll [deg]
revision	2	Processing version of data
ontime	16140.79993993	Sum of GTIs [s]
livetime	15936.415412268	Livetime [s]
ontime2	16140.79993993	Sum of GTIs [s]
ontime3	16140.79993993	Sum of GTIs [s]
ontime5	16140.79993993	Sum of GTIs [s]
ontime6	16140.79993993	Sum of GTIs [s]
ontime7	16140.79993993	Sum of GTIs [s]
ontime8	16140.79993993	Sum of GTIs [s]
l2events	180482	Number of level 2 events



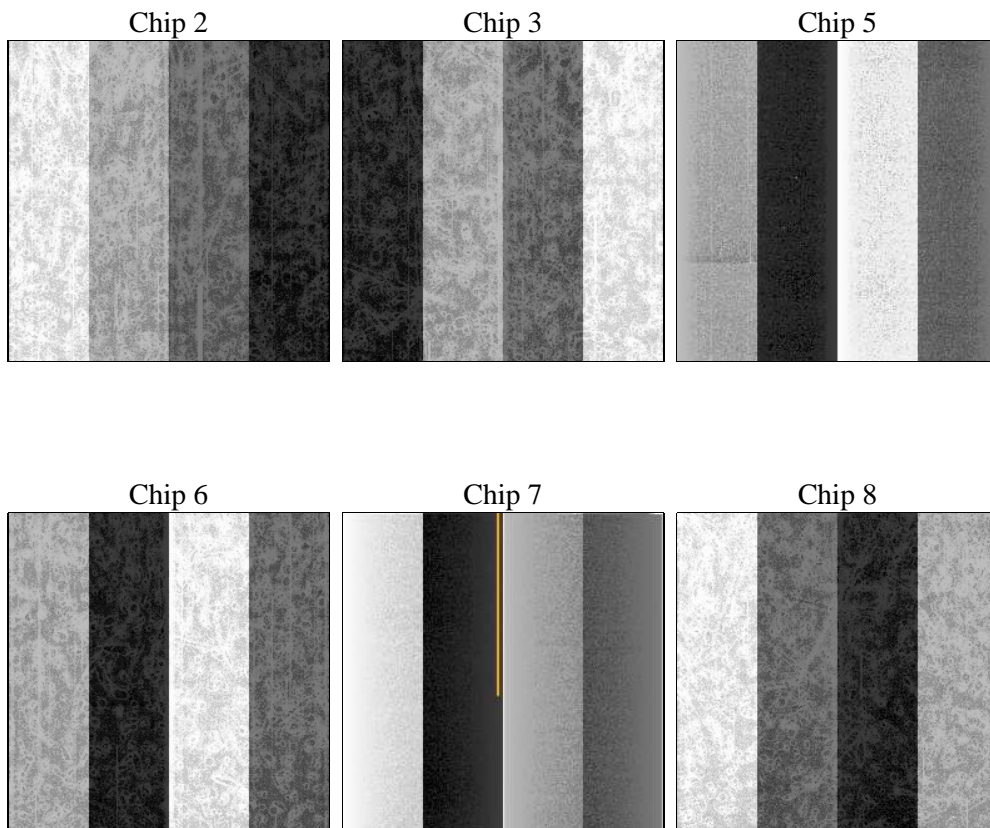
2 OBI

2.1 OBI

2.1.1 Images



2.1.2 Bias



2.1.3 Parameters

obi_num	0	Obi number	sched_exp_time	16000.000000	[s] Scheduled observation exposure time
ascdsver	8.4.4	Processing system revision	ontime	16140.79993993	Sum of GTIs [s]
caldsver	4.4.9	 	ontime2	16140.79993993	Sum of GTIs [s]
date	2012-05-29T17:02:17	Date and time of file creation	ontime3	16140.79993993	Sum of GTIs [s]
revision	2	Processing version of data	ontime5	16140.79993993	Sum of GTIs [s]
			ontime6	16140.79993993	Sum of GTIs [s]
			ontime7	16140.79993993	Sum of GTIs [s]
			ontime8	16140.79993993	Sum of GTIs [s]
			l1events	842075	Number of level 1 events

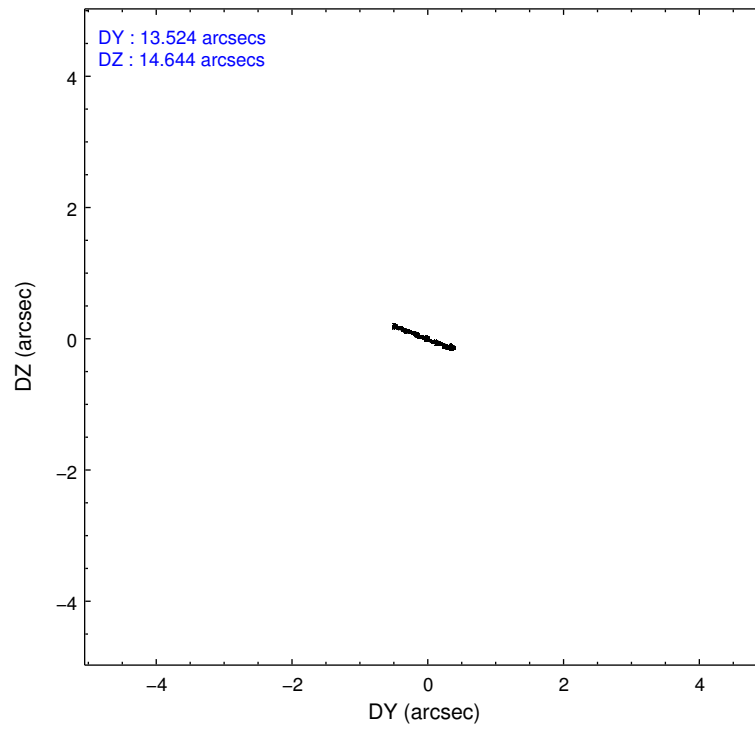
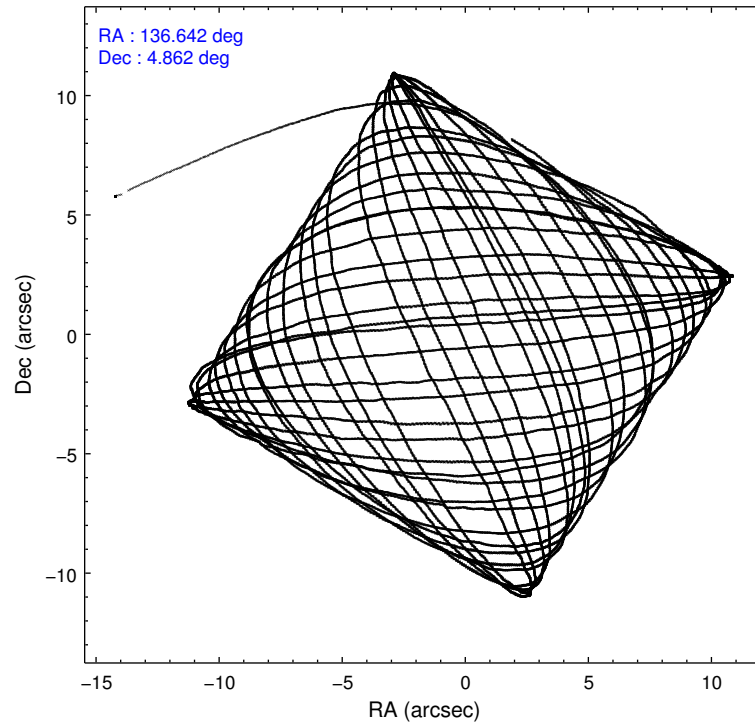
2.1.4 Events

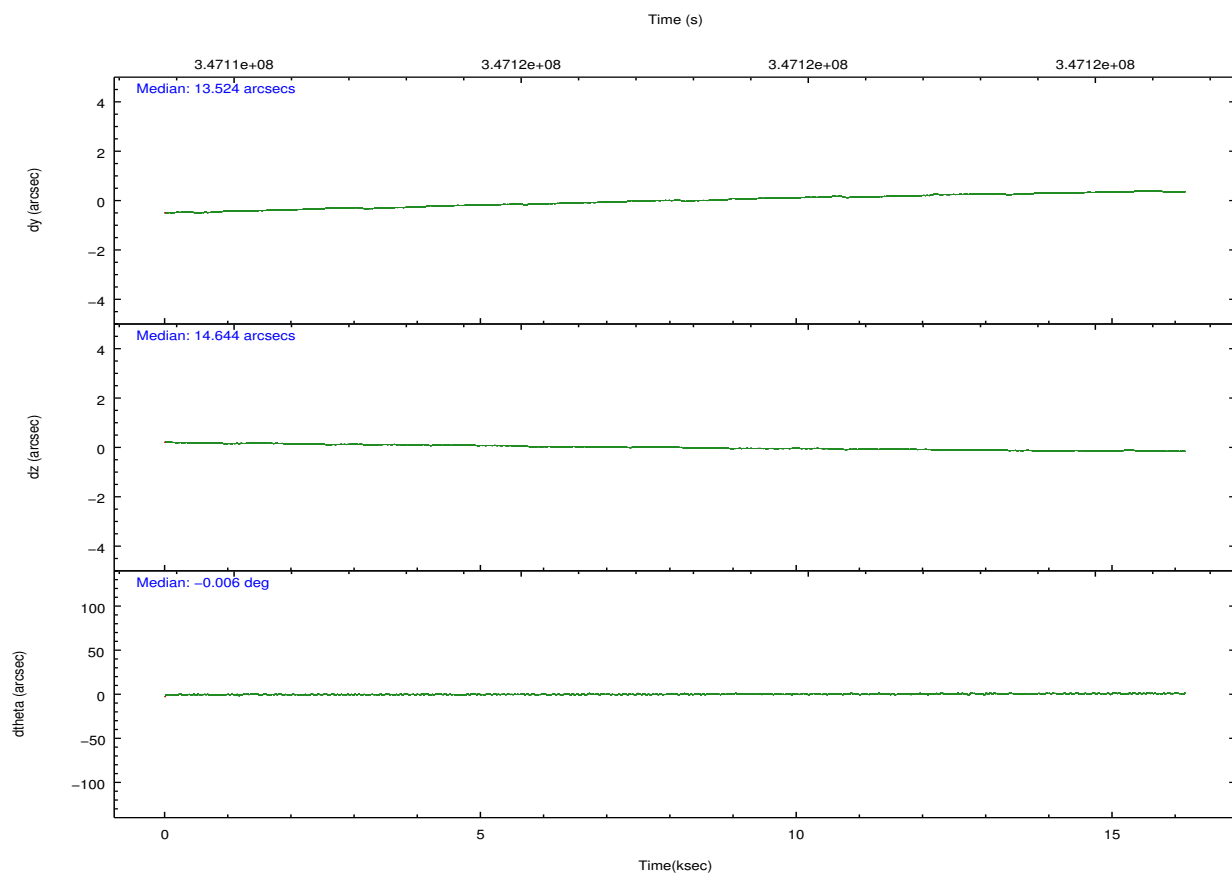
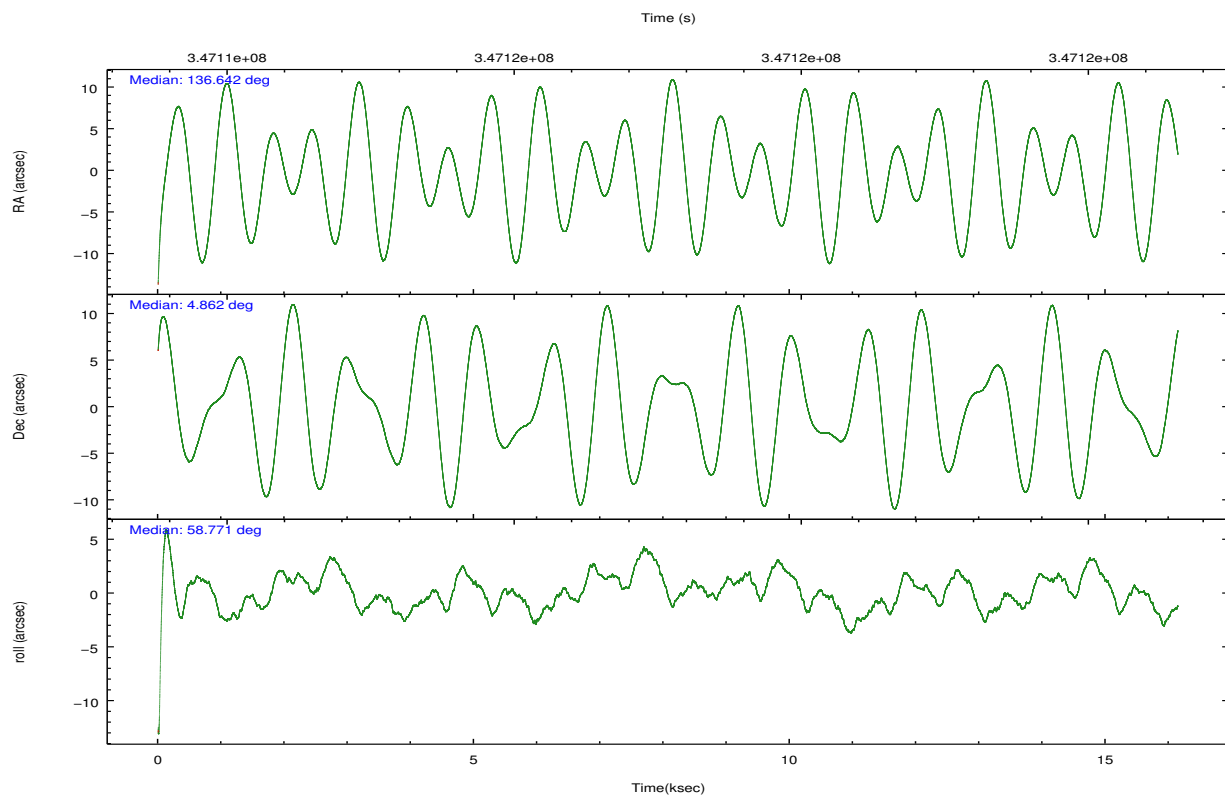
	ccd 2	ccd 3	ccd 5	ccd 6	ccd 7	ccd 8		ccd 2	ccd 3	ccd 5	ccd 6	ccd 7	ccd 8
level 1 events	138662	122459	172559	129067	124373	154955	grade 0 events	4462	4555	15081	4773	6278	10832
rejected events	126378	110540	80790	116132	64442	116326		3%	3%	8%	3%	5%	6%
rejected %	91%	90%	46%	89%	51%	75%	grade 1 events	88	69	380	65	201	124
								0%	0%	0%	0%	0%	0%
							grade 2 events	3103	2628	27049	2939	12935	9397
								2%	2%	15%	2%	10%	6%
							grade 3 events	1289	1367	4103	1397	5732	4296
								0%	1%	2%	1%	4%	2%
							grade 4 events	1310	1311	3495	1336	5489	3996
								0%	1%	2%	1%	4%	2%
							grade 5 events	3795	4385	14752	4488	13298	6587
								2%	3%	8%	3%	10%	4%
							grade 6 events	2285	2245	43481	2702	30403	10539
								1%	1%	25%	2%	24%	6%
							grade 7 events	122330	105899	64218	111367	50037	109184
								88%	86%	37%	86%	40%	70%

2.2 Compared Parameters

Parameter	Planned	Actual	Parameter	Planned	Actual
Instrument	ACIS	ACIS	Obspar format version number	7	7
Detector	ACIS-235678	ACIS-235678	Obspar file type	PREDICTED	ACTUAL
Grating	NONE	NONE	Obspar update status	NONE	UPDATED
Data mode	VFAINT	VFAINT	CCD I0 on	N	N
Observation mode	POINTING	POINTING	CCD I1 on	N	N
[deg] Pointing RA	136.641829	136.6420528201314	CCD I2 on	O1	Y
[deg] Pointing Dec	4.834730	4.862082024101521	CCD I3 on	O2	Y
[deg] Pointing Roll	58.621304	58.7779017291023	CCD S0 on	N	N
[mm] SIM focus pos	-0.684267	-0.6828225247311905	CCD S1 on	O3	Y
[mm] SIM defocus	0	0.001444936568705701	CCD S2 on	O4	Y
[mm] SIM translation stage pos	-190.132523	-190.1425803651734	CCD S3 on	Y	Y
[mm] SIM translation stage offset	0	0.01005778216563158	CCD S4 on	O5	Y
[s] Observation start time (MET)	347109754.184000	347108577.82038	CCD S5 on	N	N
Observation start date	2008-12-31T11:21:29	2008-12-31T11:02:57	Number of optional ACIS chips dropped	0	0
[s] Observation end time (MET)	347125754.184000	347126576.30877	On-chip summing requested	N	N
Observation end date	2008-12-31T15:48:09	2008-12-31T16:02:56	Subarray requested	NONE	NONE
Read mode	TIMED	TIMED	Alternating exposures requested	N	N
			[s] Primary exposure time	0.000000	3.2

2.3 Aspect



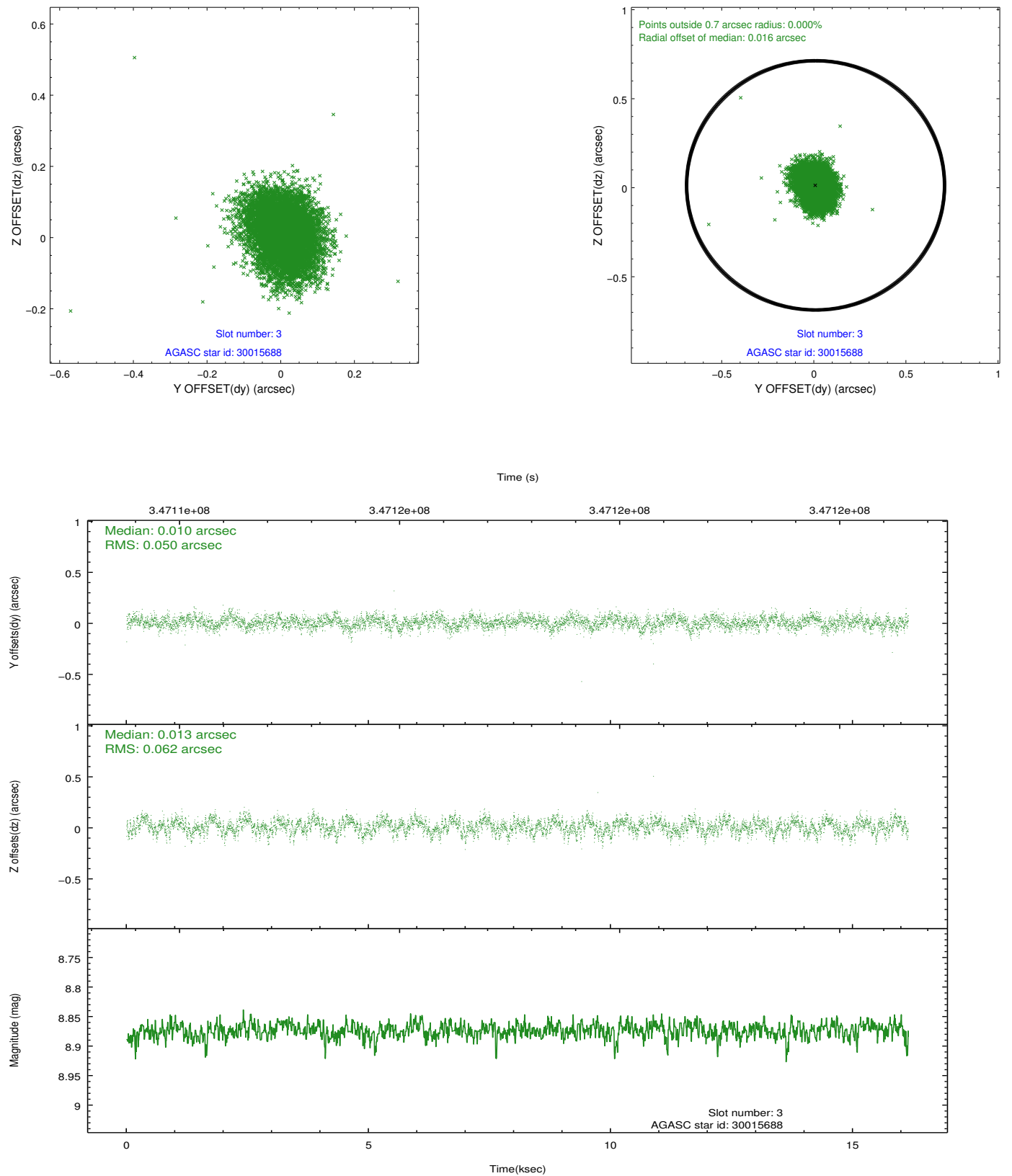


Slot Statistics

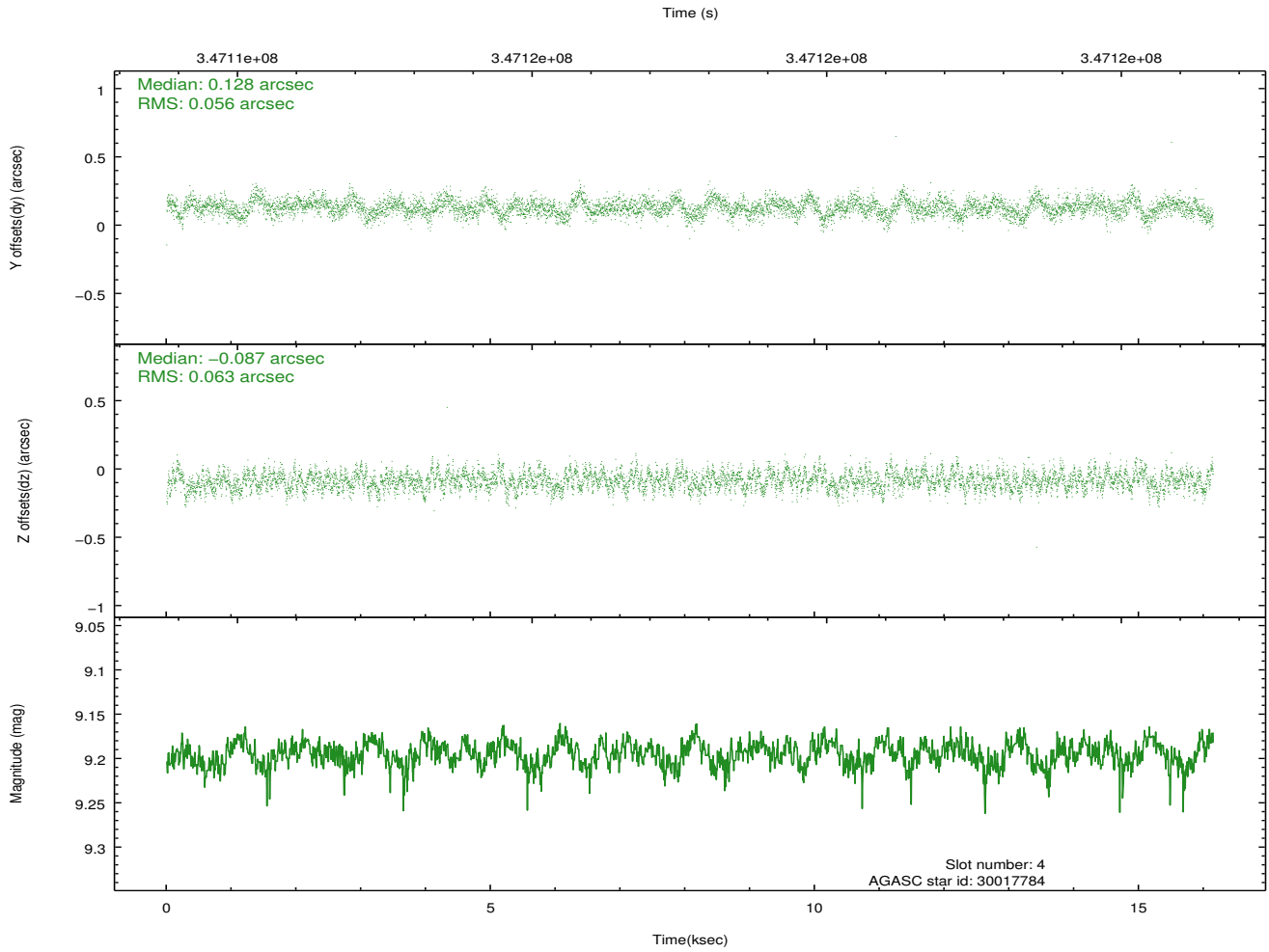
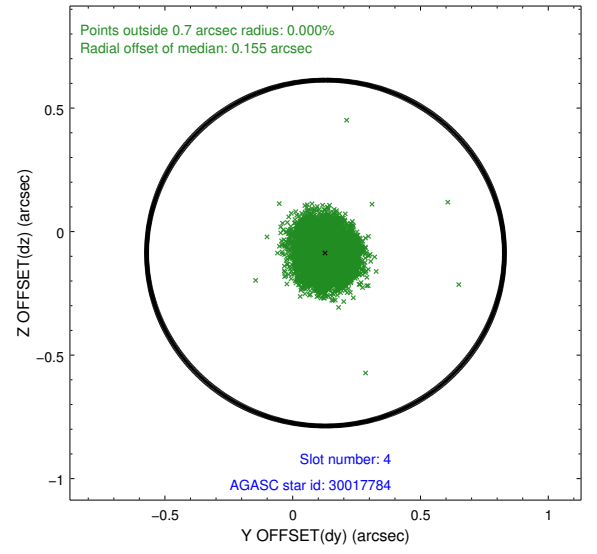
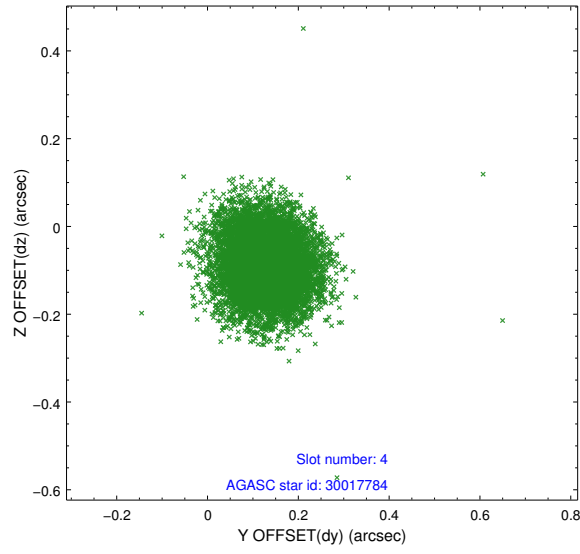
slot	status	id	mag	n_pts	med_dy	med_dz	dr1	dr2	ra	dec	mean_y	mean_z
0	FID	ACIS-S-1	6.99	3939	0.075	-0.041	0.007	0.012	0.000000	0.000000	929.71	-1731.62
1	FID	ACIS-S-5	7.02	3938	-0.151	0.045	0.011	0.019	0.000000	0.000000	-1819.39	165.70
2	FID	ACIS-S-6	7.12	3939	0.055	0.007	0.011	0.018	0.000000	0.000000	394.91	809.96
3	GUIDE	30015688	8.87	7873	0.010	0.013	0.085	0.136	136.470981	4.742250	-603.06	350.11
4	GUIDE	30017784	9.19	7875	0.128	-0.087	0.089	0.144	136.270410	4.913312	-452.06	1285.04
5	GUIDE	30033912	9.63	7846	0.023	0.190	0.130	0.213	137.124336	4.844401	931.94	-1458.59
6	GUIDE	30416800	9.31	7870	-0.166	-0.120	0.087	0.144	136.749776	5.488850	2211.86	896.15
7	GUIDE	30424848	9.81	7841	0.010	0.012	0.157	0.250	137.464450	5.043638	2180.57	-2125.65

2.4 Star Slots

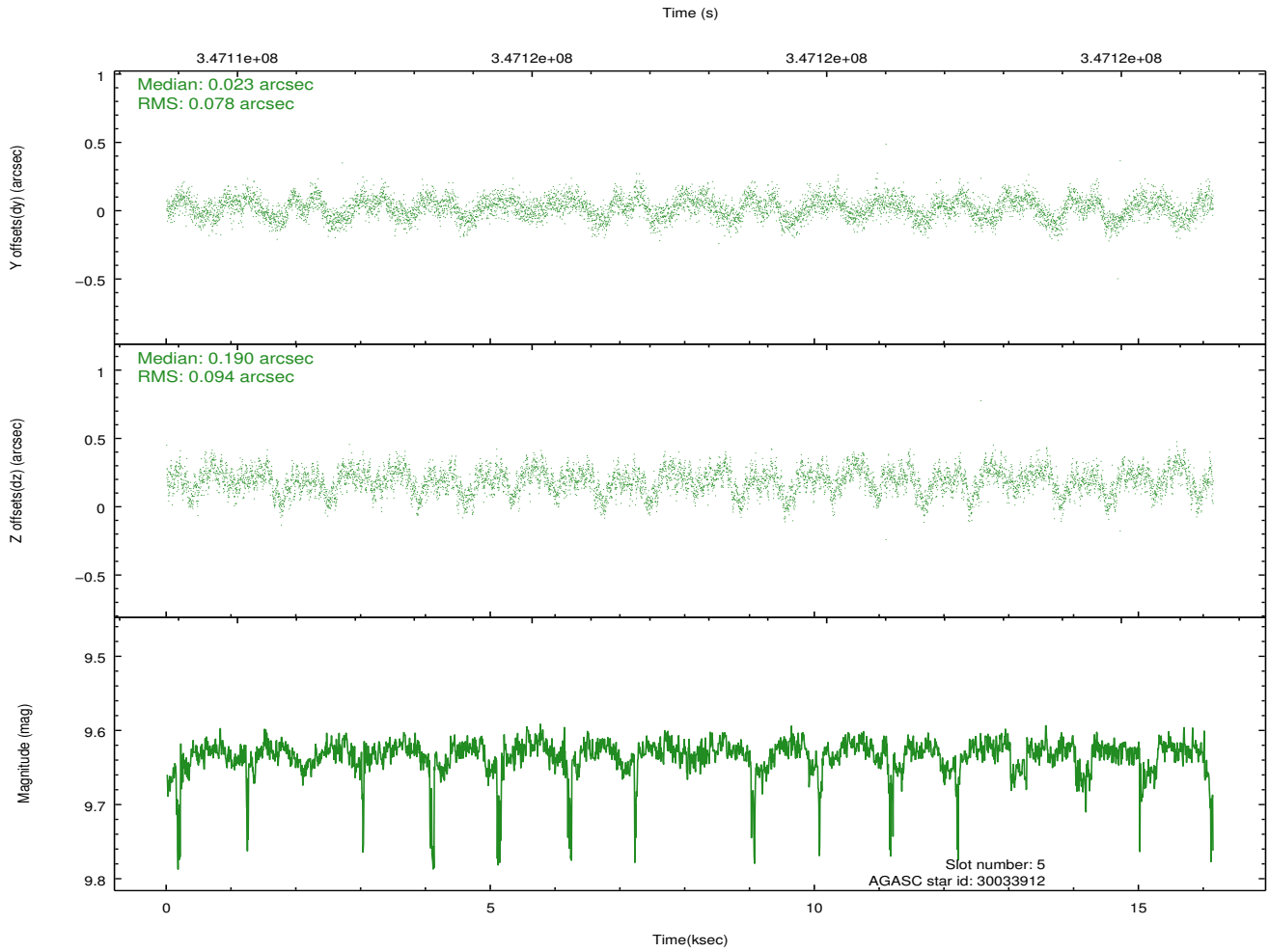
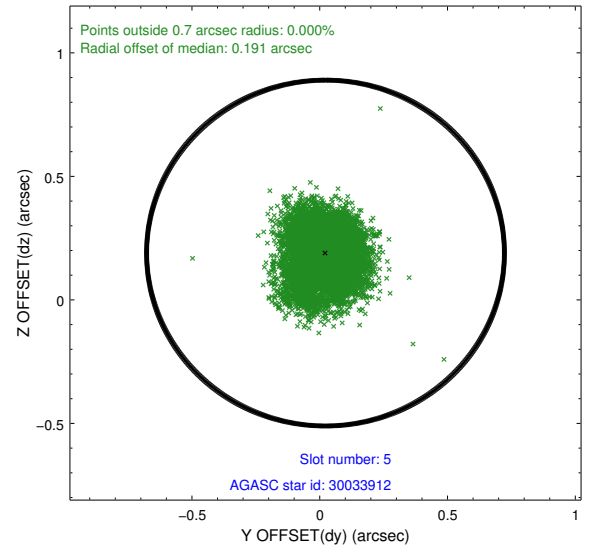
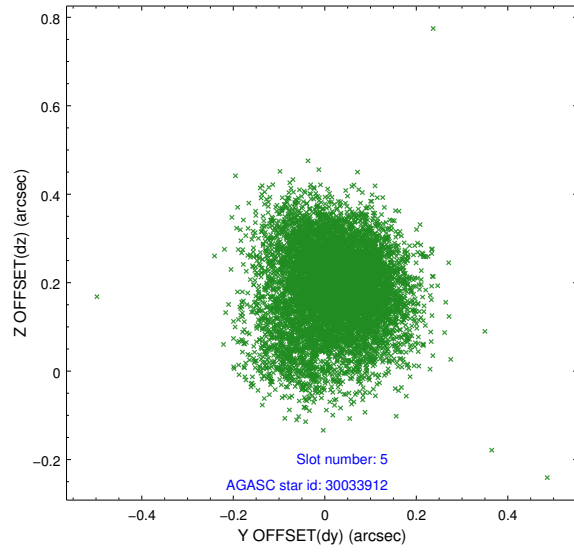
2.4.1 Slot 3



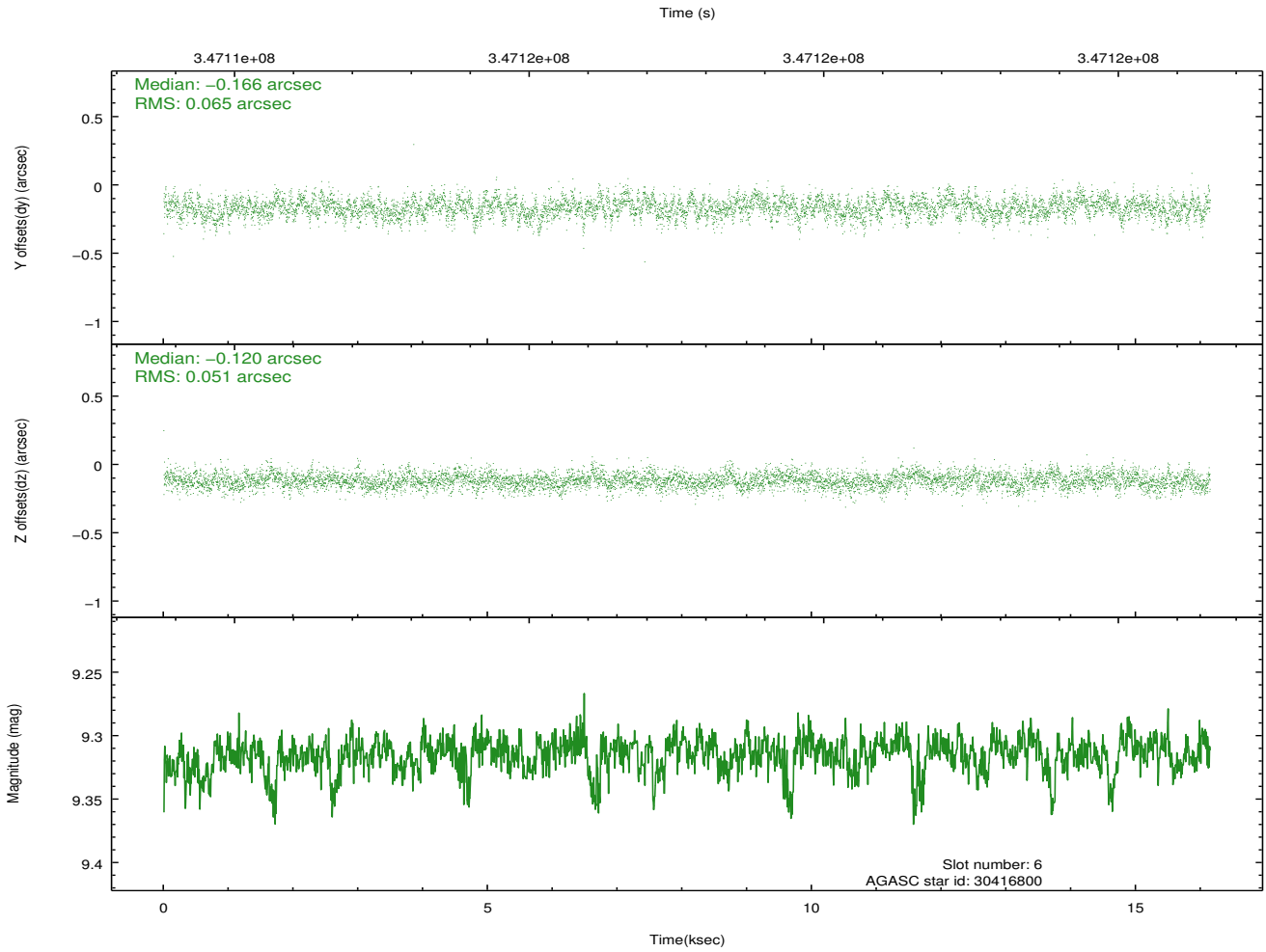
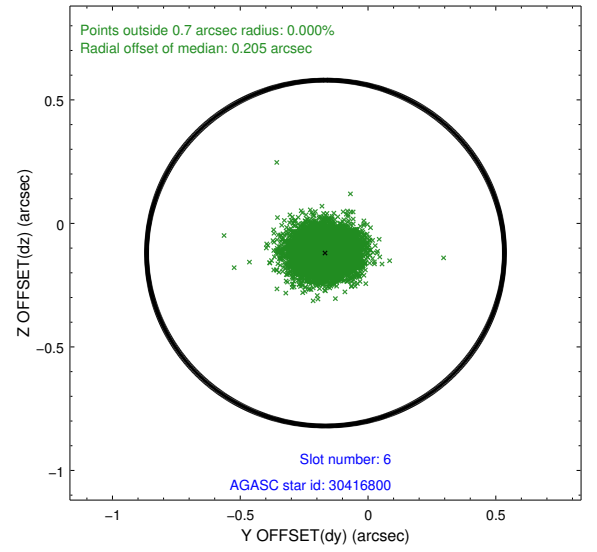
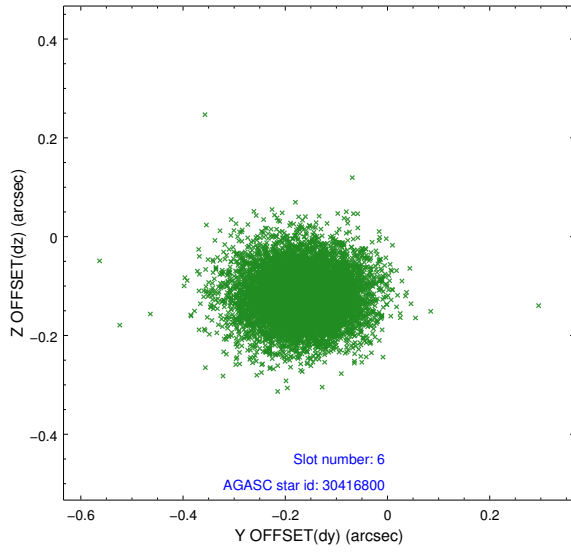
2.4.2 Slot 4



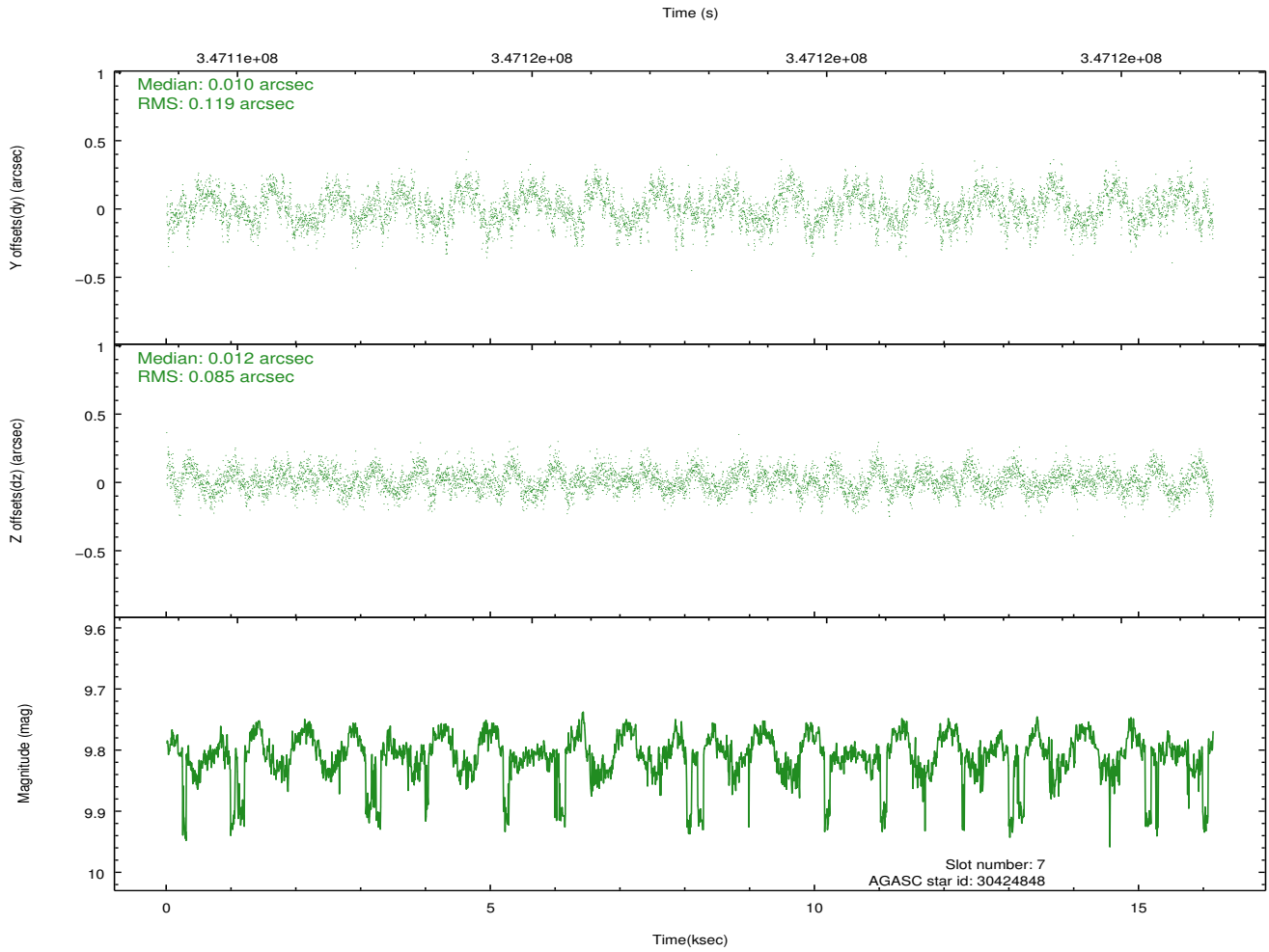
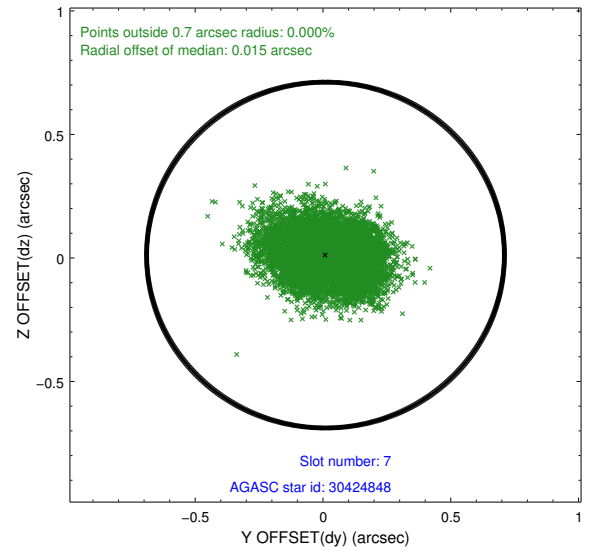
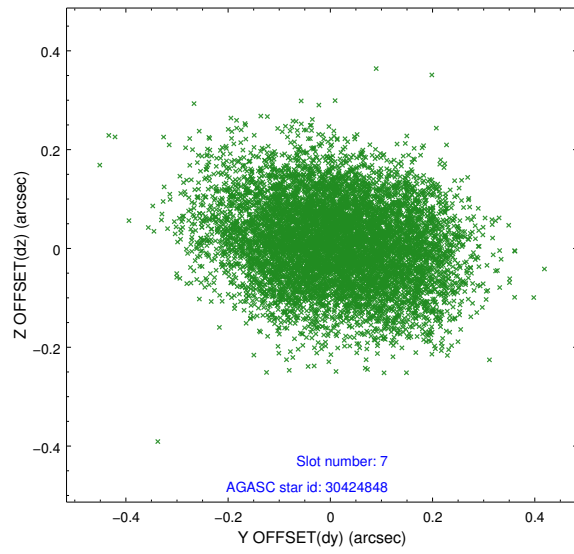
2.4.3 Slot 5



2.4.4 Slot 6

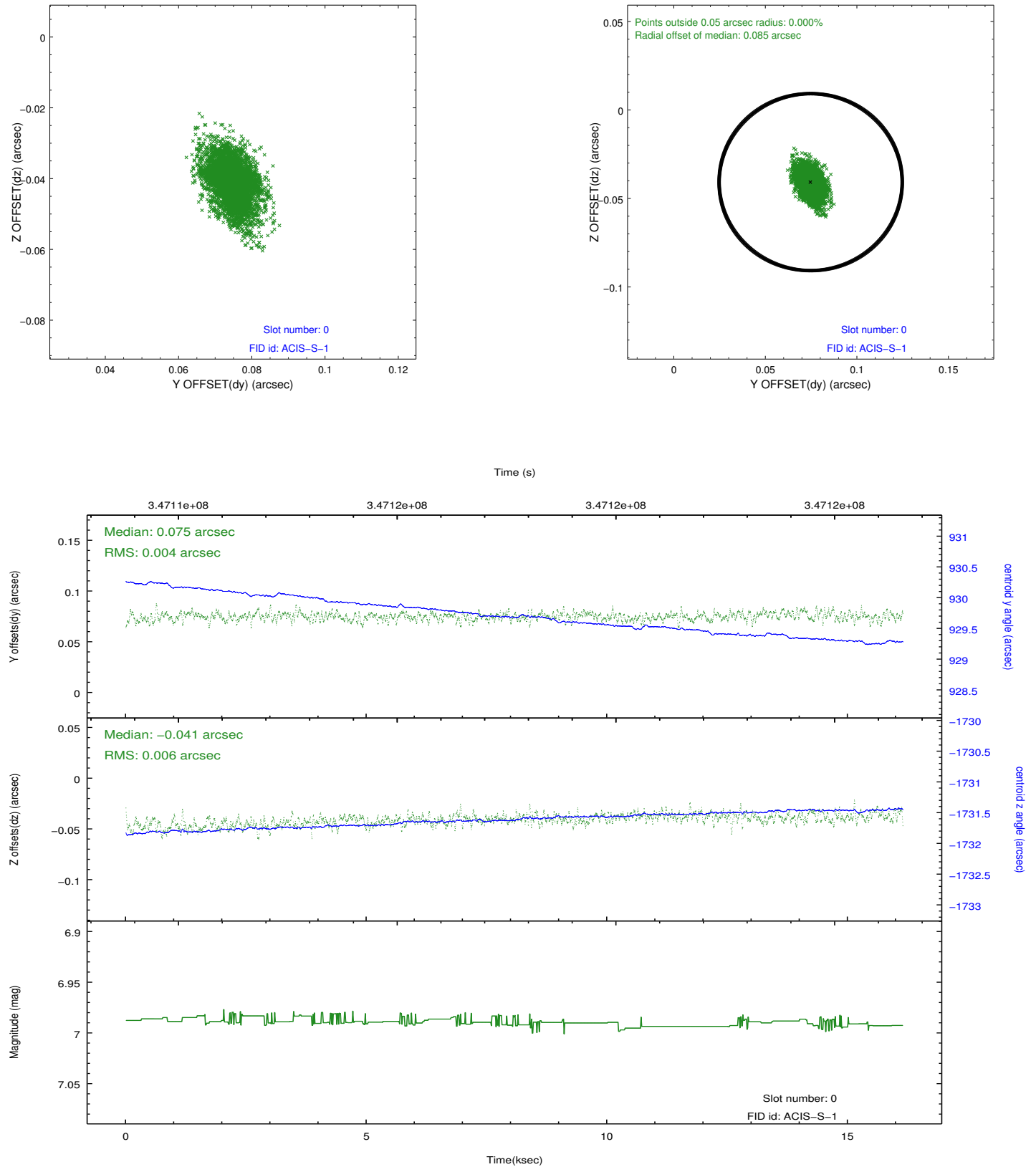


2.4.5 Slot 7

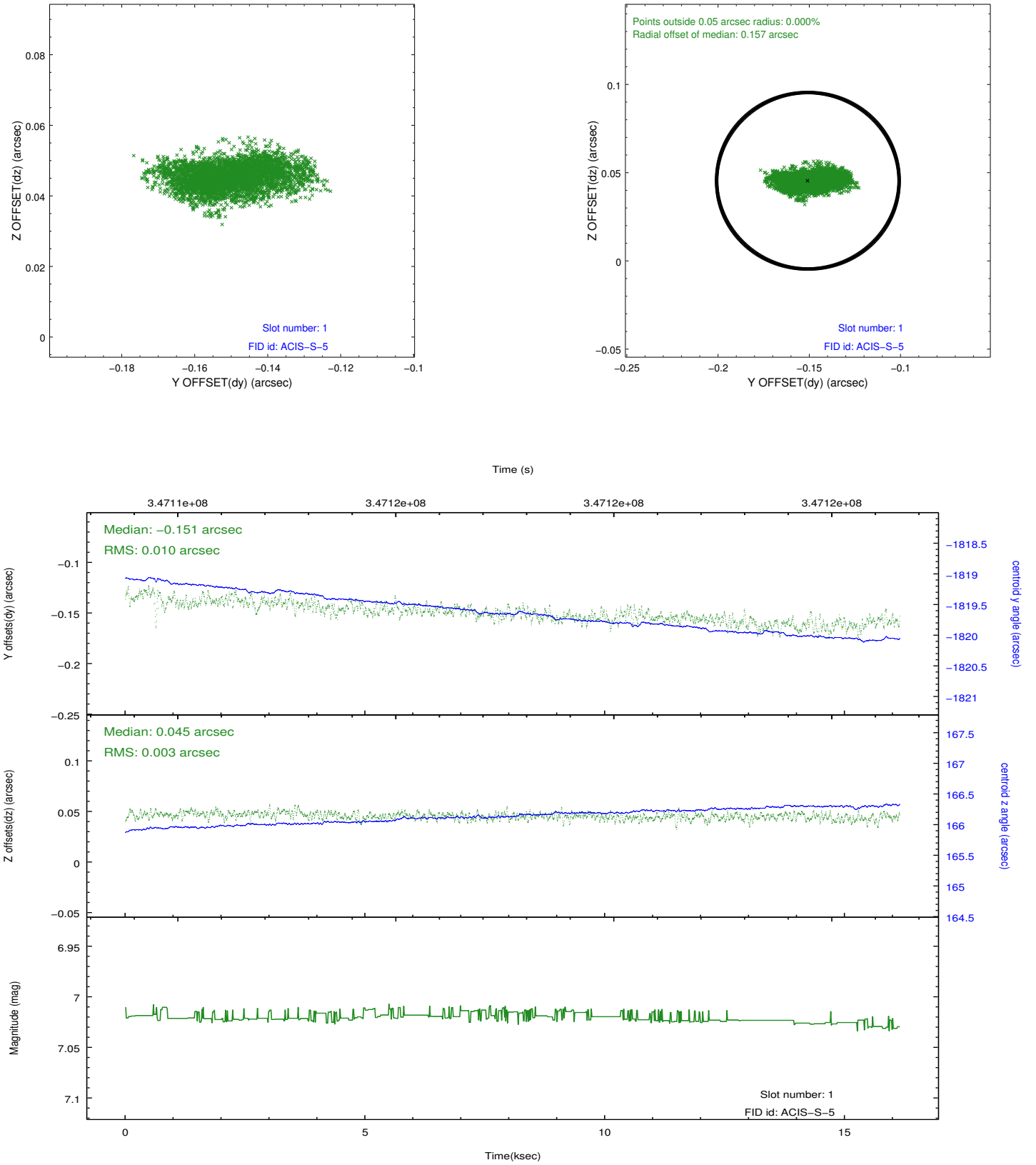


2.5 FID Slots

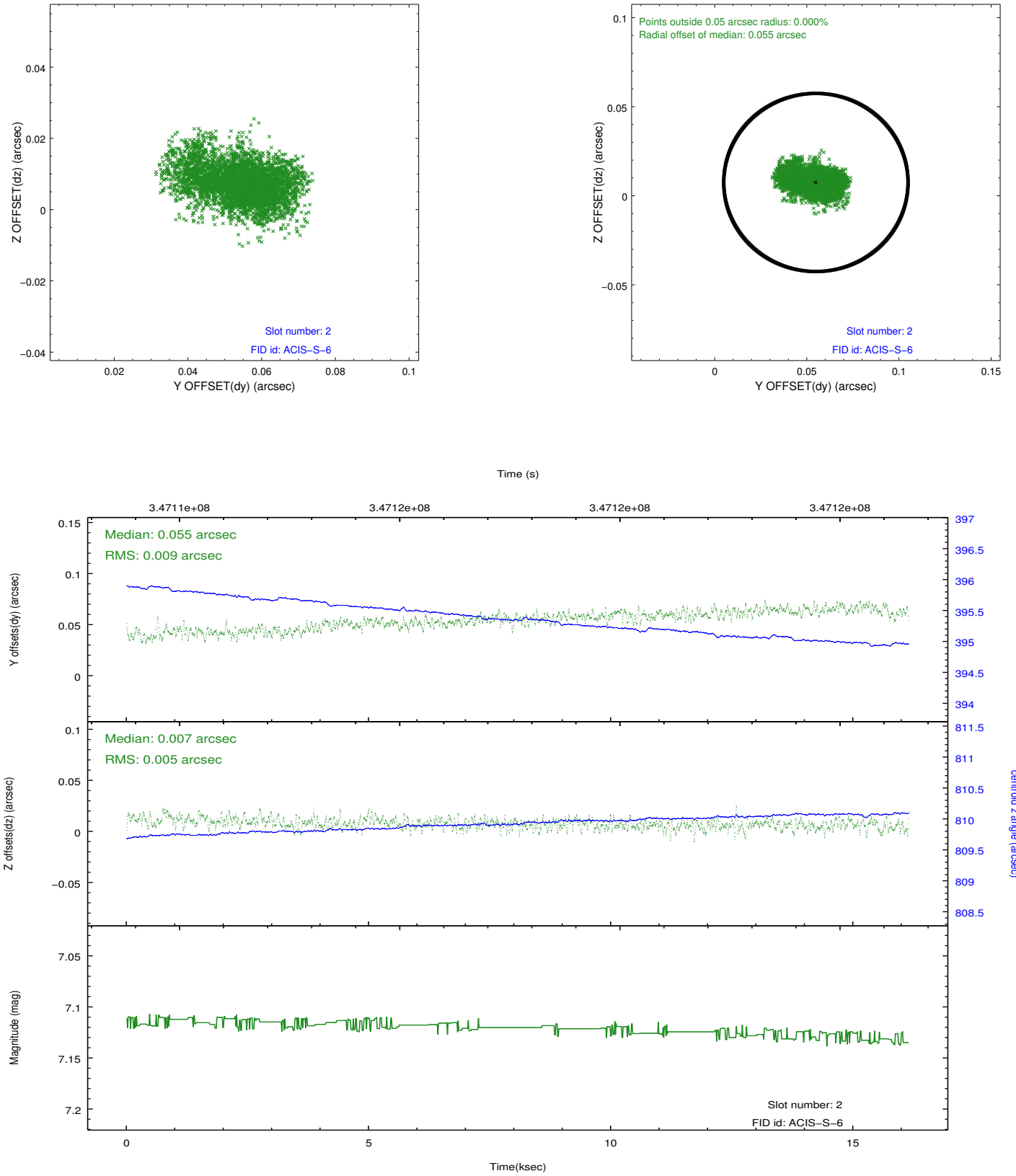
2.5.1 Slot 0



2.5.2 Slot 1



2.5.3 Slot 2



A Summary

A.1 Status

V&V Scientist	Beth Sundheim
V&V Date (YYYY-MM-DD)	2012.06.04
V&V Edition	1
V&V Disposition and Status	OK
V&V Charge Time	16.1407999

A.2 Comments