

V&V Reference Report

L2 ASCDS Version : 8.4.4

Observation 9505 - L2 Version 2
Chandra X-Ray Center

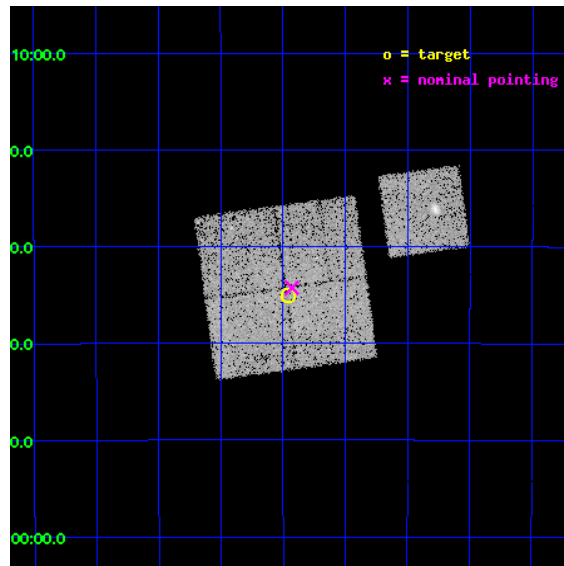
L2 Processing Date : May 14 2012

Contents

1	Front	2
2	OBI	3
2.1	OBI	3
2.1.1	Images	3
2.1.2	Bias	3
2.1.3	Parameters	4
2.1.4	Events	4
2.2	Compared Parameters	5
2.3	Aspect	6
2.4	Star Slots	9
2.4.1	Slot 3	9
2.4.2	Slot 4	10
2.4.3	Slot 5	11
2.4.4	Slot 6	12
2.4.5	Slot 7	13
2.5	FID Slots	14
2.5.1	Slot 0	14
2.5.2	Slot 1	15
2.5.3	Slot 2	16
A	Summary	17
A.1	Status	17
A.2	Comments	17

1 Front

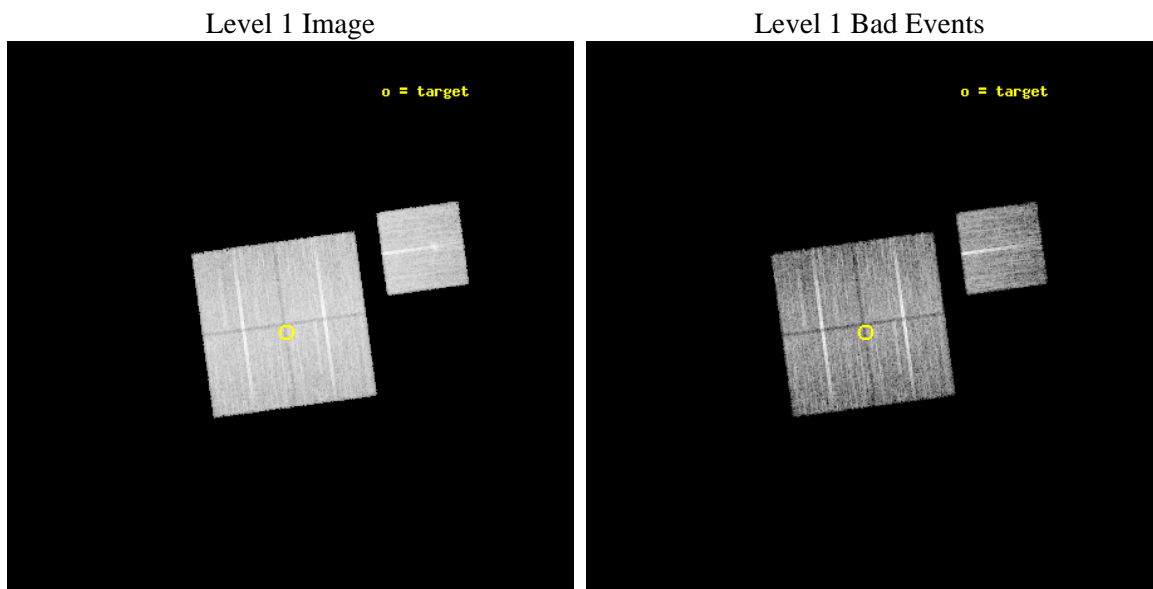
seq_num	900837	Sequence number
obs_id	9505	Observation id
title	THE ORIGIN OF THE GALACTIC RIDGE X-RAY EMISSION	Proposal title
observer	Dr. Mikhail Revnivtsev	Principal investigator
object	1.5deg_window	Source name
dtcycle	0	
cycle	P	events from which exps? Prim/Second/Both
ra_targ	267.86375	Observer's specified target RA [deg]
dec_targ	-29.58475	Observer's specified target Dec [deg]
ra_nom	267.85740094024	Nominal RA [deg]
dec_nom	-29.571229054895	Nominal Dec [deg]
roll_nom	82.222549366961	Nominal Roll [deg]
revision	2	Processing version of data
ontime	10865.459093273	Sum of GTIs [s]
livetime	10723.493871184	Livetime [s]
ontime0	10868.60008359	Sum of GTIs [s]
ontime1	10865.459093273	Sum of GTIs [s]
ontime2	10862.318142772	Sum of GTIs [s]
ontime3	10868.60008359	Sum of GTIs [s]
ontime6	10868.60008359	Sum of GTIs [s]
l2events	55618	Number of level 2 events



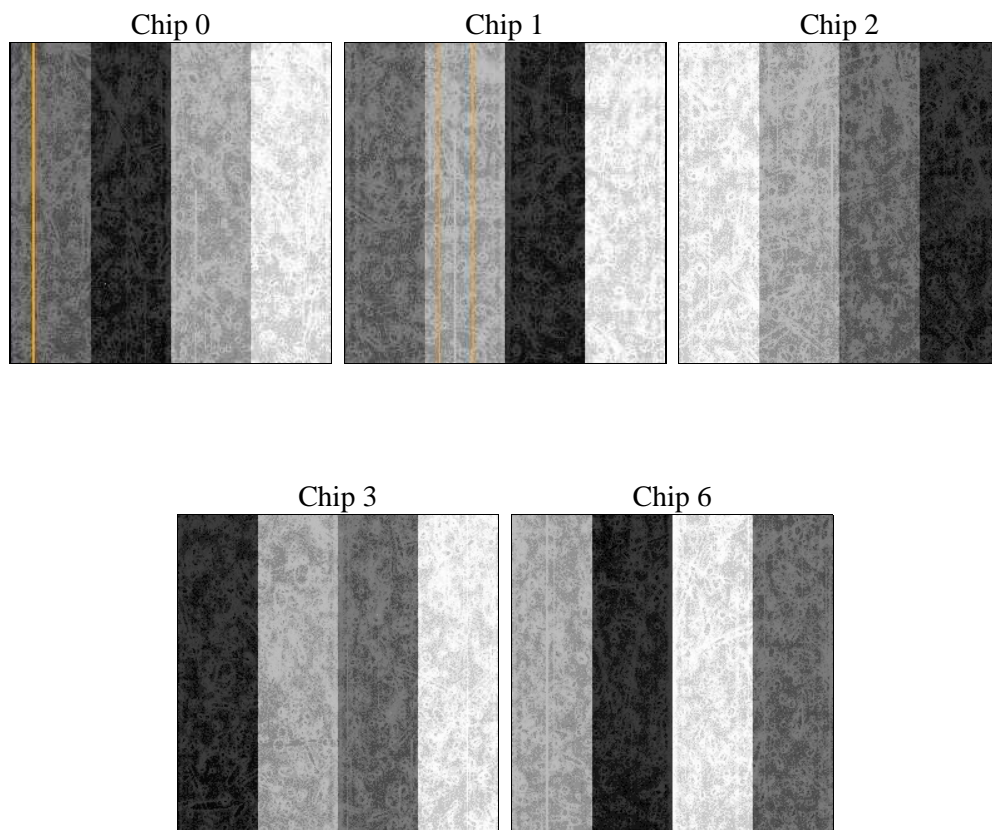
2 OBI

2.1 OBI

2.1.1 Images



2.1.2 Bias



2.1.3 Parameters

obi_num	0	Obi number	sched_exp_time	105187.000000	[s] Scheduled observation exposure time
ascdsver	8.4.4	Processing system revision	ontime	10865.459093273	Sum of GTIs [s]
caldsver	4.4.9	 	ontime0	10868.60008359	Sum of GTIs [s]
date	2012-05-14T02:42:20	Date and time of file creation	ontime1	10865.459093273	Sum of GTIs [s]
revision	2	Processing version of data	ontime2	10862.318142772	Sum of GTIs [s]
			ontime3	10868.60008359	Sum of GTIs [s]
			ontime6	10868.60008359	Sum of GTIs [s]
			l1events	437967	Number of level 1 events

2.1.4 Events

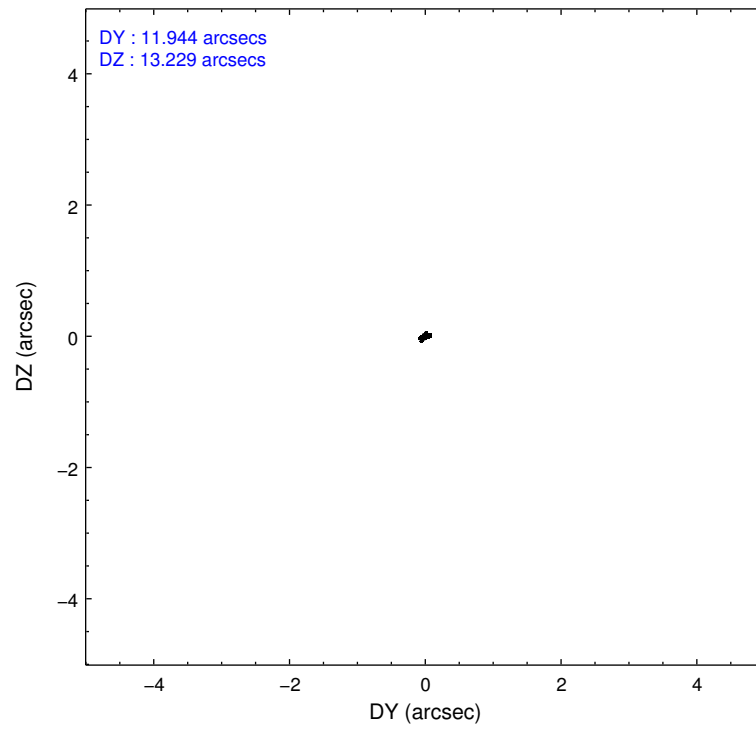
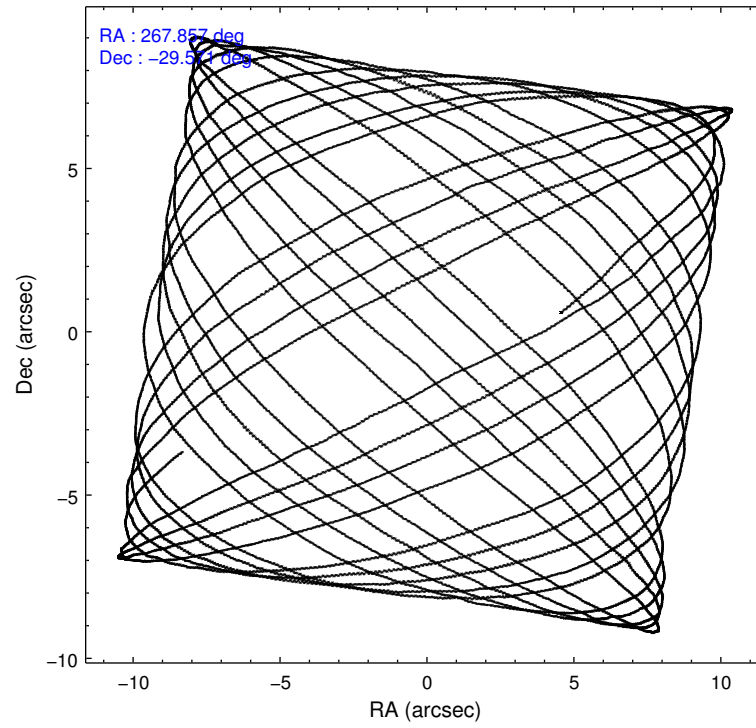
	ccd 0	ccd 1	ccd 2	ccd 3	ccd 6
level 1 events	83518	85693	94080	86641	88035
rejected events	71350	71406	81798	73668	75488
rejected %	85%	83%	86%	85%	85%

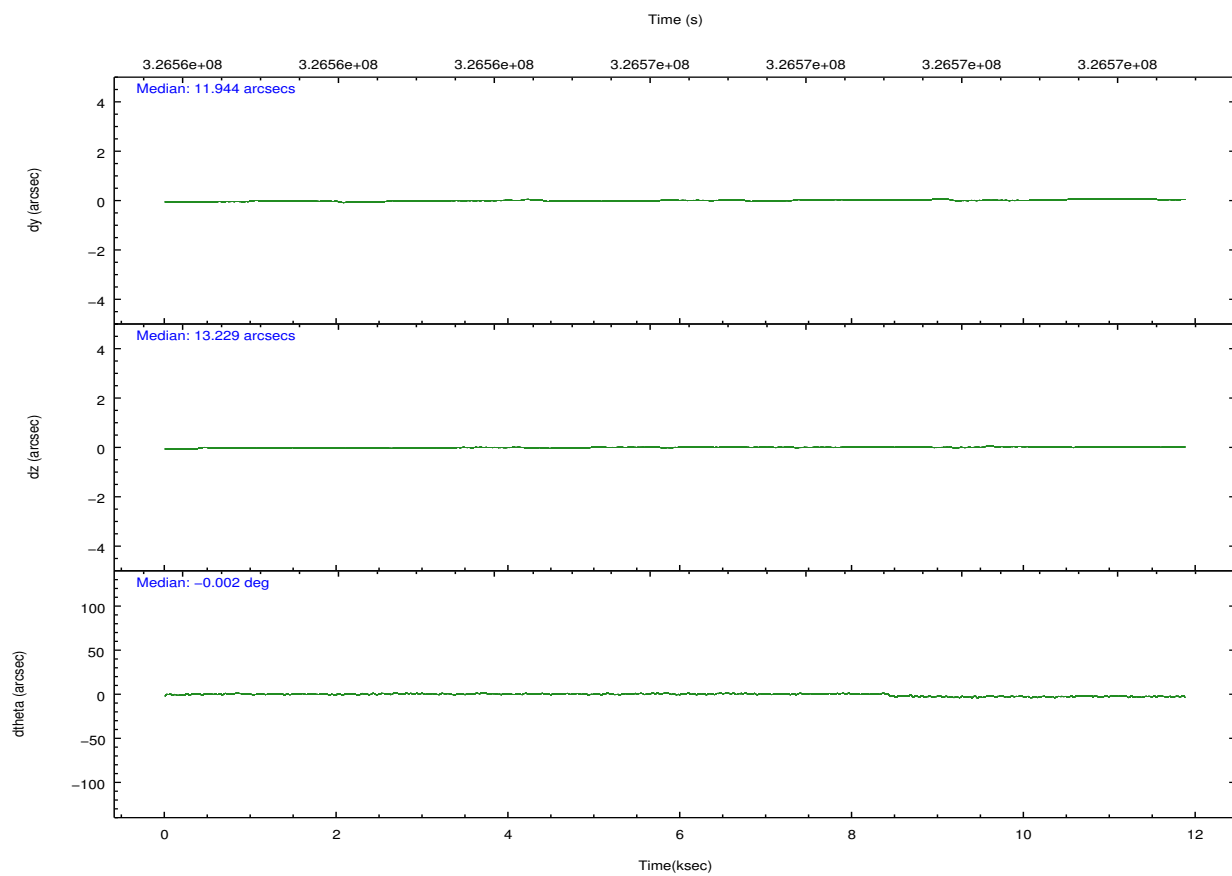
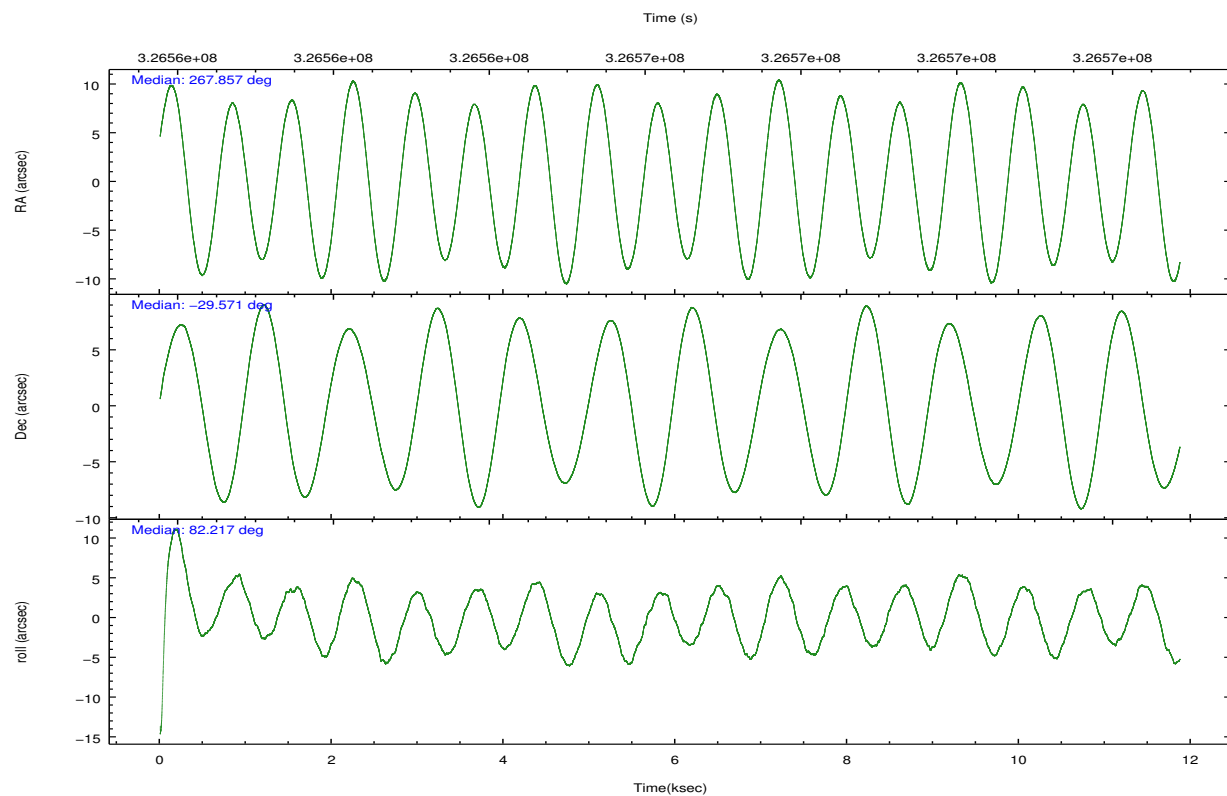
	ccd 0	ccd 1	ccd 2	ccd 3	ccd 6
grade 0 events	5899	7436	6092	6856	6181
	7%	8%	6%	7%	7%
grade 1 events	62	65	66	86	50
	0%	0%	0%	0%	0%
grade 2 events	2470	2562	2461	2230	2271
	2%	2%	2%	2%	2%
grade 3 events	1042	1172	970	1053	1062
	1%	1%	1%	1%	1%
grade 4 events	1016	1160	1061	1101	1048
	1%	1%	1%	1%	1%
grade 5 events	3149	3342	3012	3460	3271
	3%	3%	3%	3%	3%
grade 6 events	1748	1965	1700	1738	1986
	2%	2%	1%	2%	2%
grade 7 events	68132	67991	78718	70117	72166
	81%	79%	83%	80%	81%

2.2 Compared Parameters

Parameter	Planned	Actual	Parameter	Planned	Actual
Instrument	ACIS	ACIS	Obspar format version number	7	7
Detector	ACIS-01236	ACIS-01236	Obspar file type	PREDICTED	ACTUAL
Grating	NONE	NONE	Obspar update status	NONE	UPDATED
Data mode	VFAINT	VFAINT	CCD I0 on	Y	Y
Observation mode	POINTING	POINTING	CCD I1 on	Y	Y
[deg] Pointing RA	267.869485	267.857400940245	CCD I2 on	Y	Y
[deg] Pointing Dec	-29.596639	-29.57122905489549	CCD I3 on	Y	Y
[deg] Pointing Roll	82.019828	82.22254936696051	CCD S0 on	N	N
[mm] SIM focus pos	-0.782348	-0.7809083437167272	CCD S1 on	N	N
[mm] SIM defocus	0	0.001439871863259334	CCD S2 on	O1	Y
[mm] SIM translation stage pos	-233.592463	-233.5874344608287	CCD S3 on	N	N
[mm] SIM translation stage offset	0	-0.005018542100998502	CCD S4 on	N	N
[s] Observation start time (MET)	326561442.184000	326560079.16369	CCD S5 on	N	N
Observation start date	2008-05-07T15:29:37	2008-05-07T15:07:59	Number of optional ACIS chips dropped	0	0
[s] Observation end time (MET)	326666629.184000	326573144.83933	On-chip summing requested	N	N
Observation end date	2008-05-08T20:42:44	2008-05-07T18:45:44	Subarray requested	NONE	NONE
Read mode	TIMED	TIMED	Alternating exposures requested	N	N
			[s] Primary exposure time	0.000000	3.1

2.3 Aspect



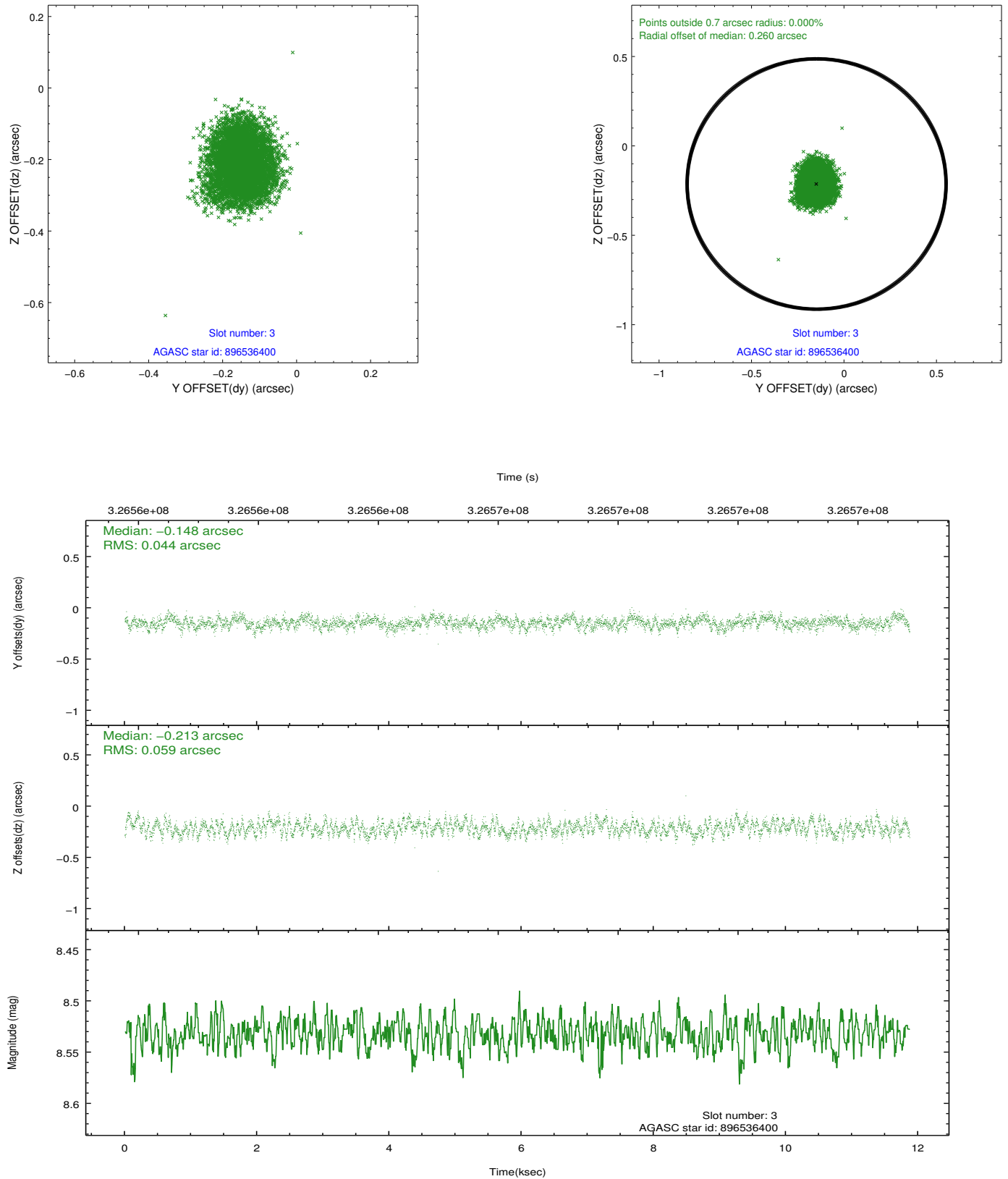


Slot Statistics

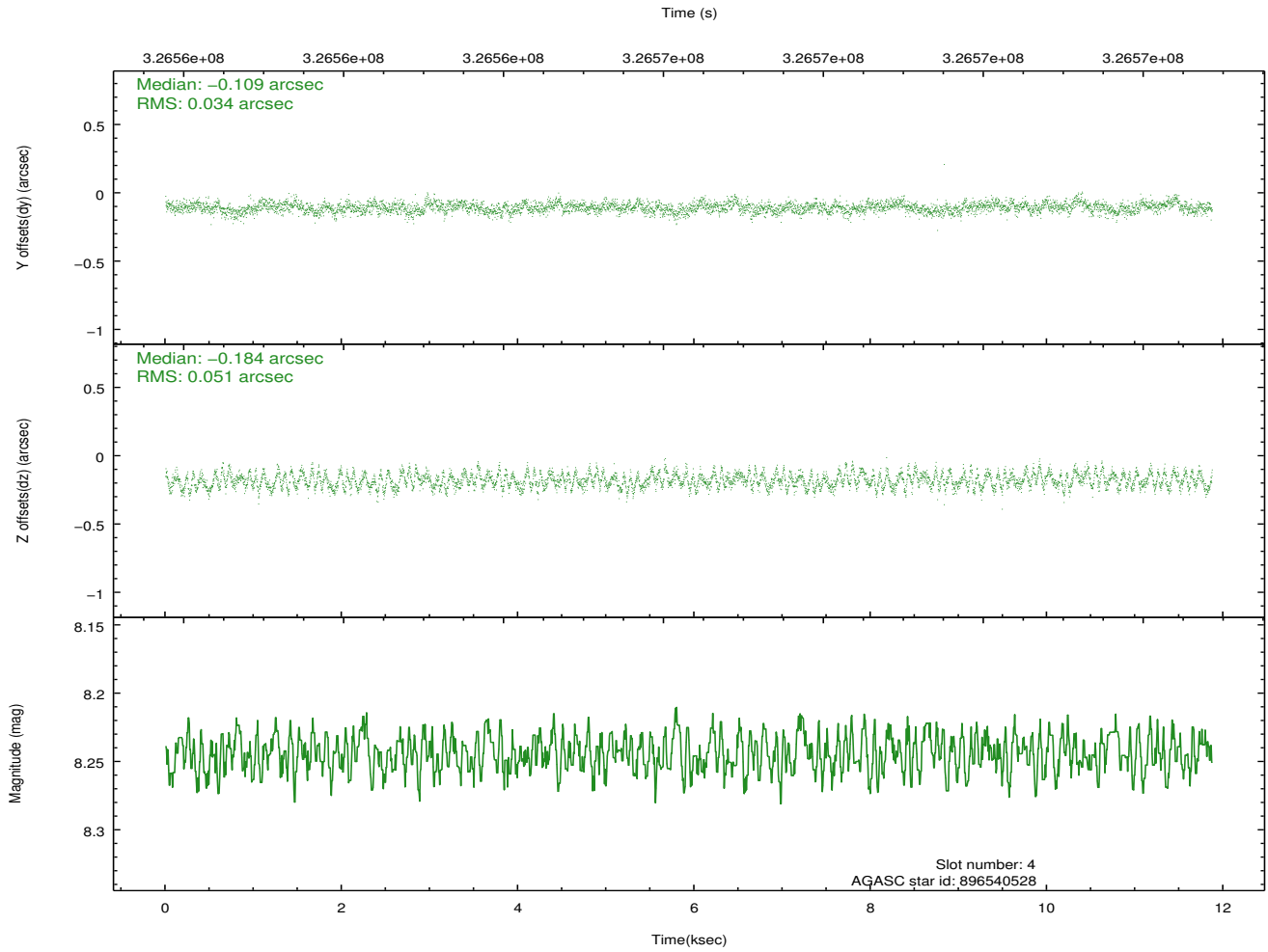
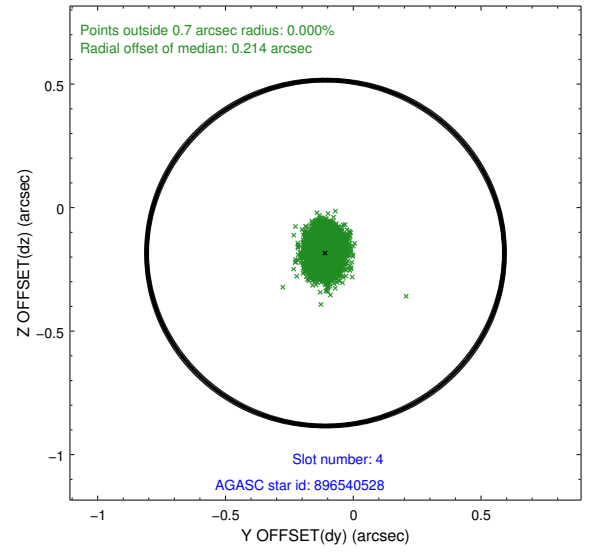
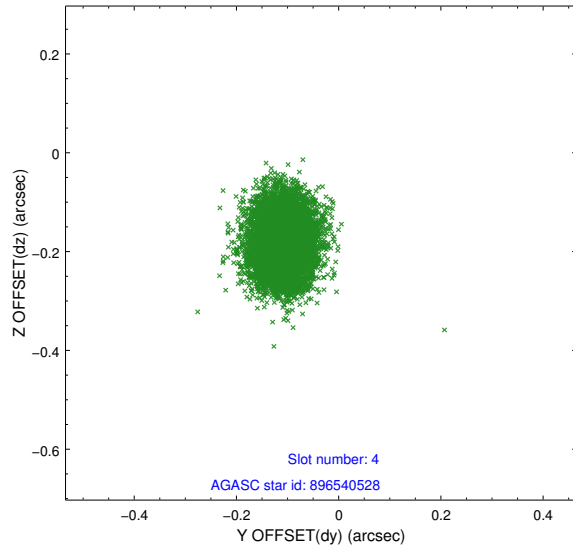
slot	status	id	mag	n_pts	med_dy	med_dz	dr1	dr2	ra	dec	mean_y	mean_z
0	FID	ACIS-I-1	7.03	2896	-0.019	0.008	0.017	0.037	0.000000	0.000000	927.58	-836.78
1	FID	ACIS-I-4	6.97	2895	0.151	0.027	0.014	0.029	0.000000	0.000000	2148.03	1062.84
2	FID	ACIS-I-5	7.02	2896	-0.230	0.036	0.009	0.015	0.000000	0.000000	-1820.08	1061.19
3	GUIDE	896536400	8.53	5792	-0.148	-0.213	0.080	0.124	267.359146	-29.438655	337.49	1662.81
4	GUIDE	896540528	8.24	5786	-0.109	-0.184	0.066	0.104	267.368305	-29.314773	783.02	1698.20
5	GUIDE	898247688	8.67	5791	0.002	0.021	0.089	0.146	268.426687	-29.012154	2323.67	-1445.21
6	GUIDE	898248800	8.23	5727	0.098	0.196	0.070	0.112	267.977609	-29.931731	-1147.20	-501.65
7	GUIDE	967053960	9.25	5786	0.152	0.180	0.091	0.146	268.185736	-30.091336	-1628.01	-1223.04

2.4 Star Slots

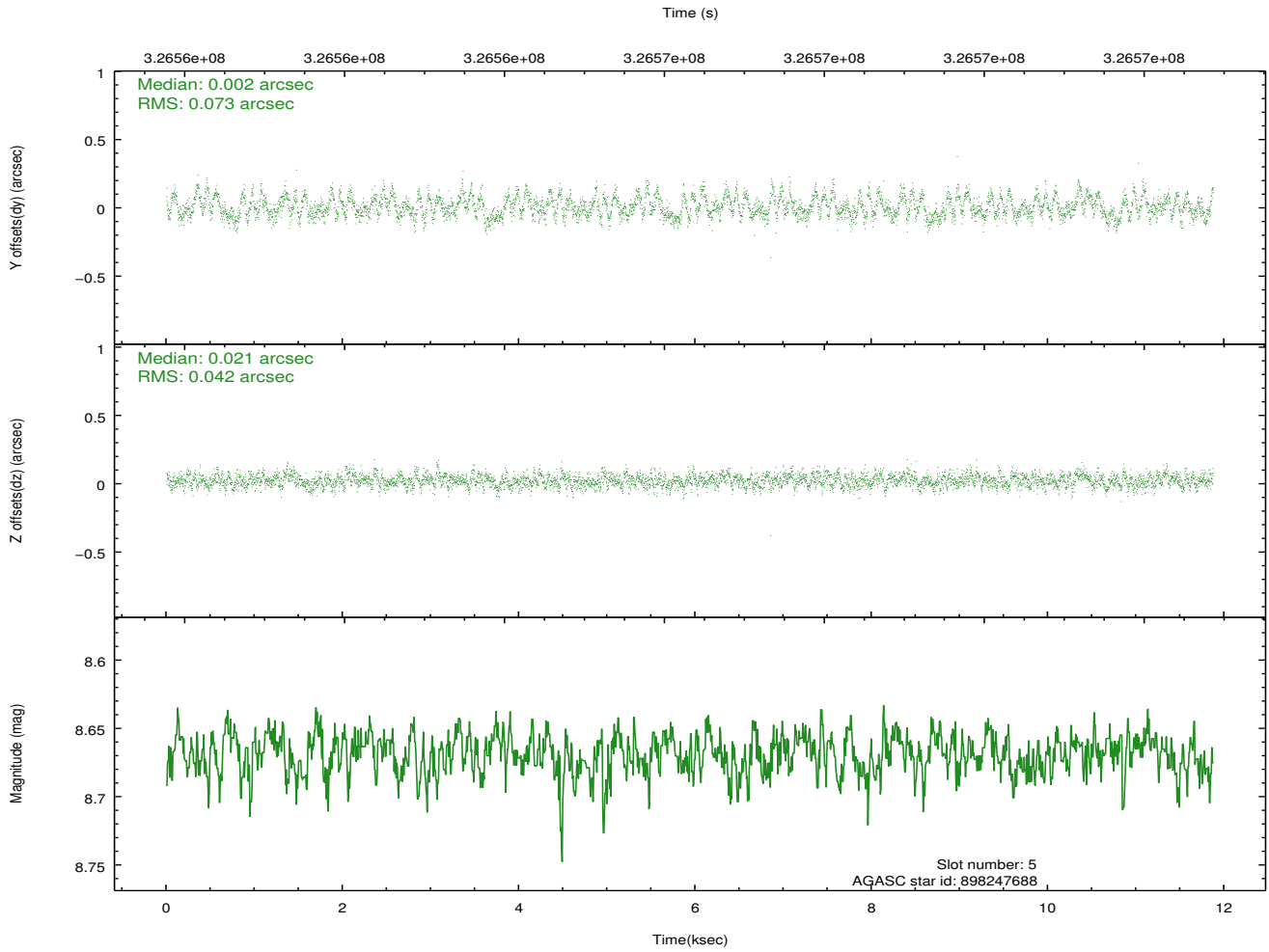
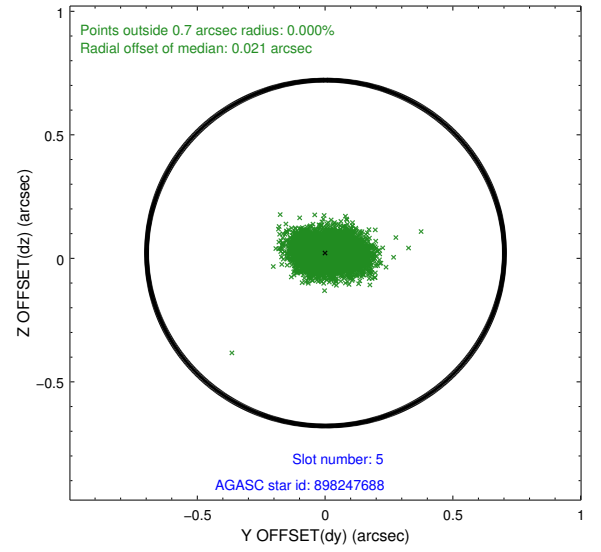
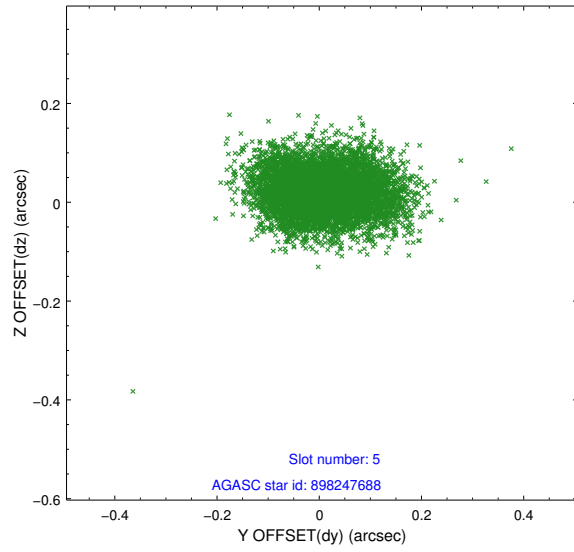
2.4.1 Slot 3



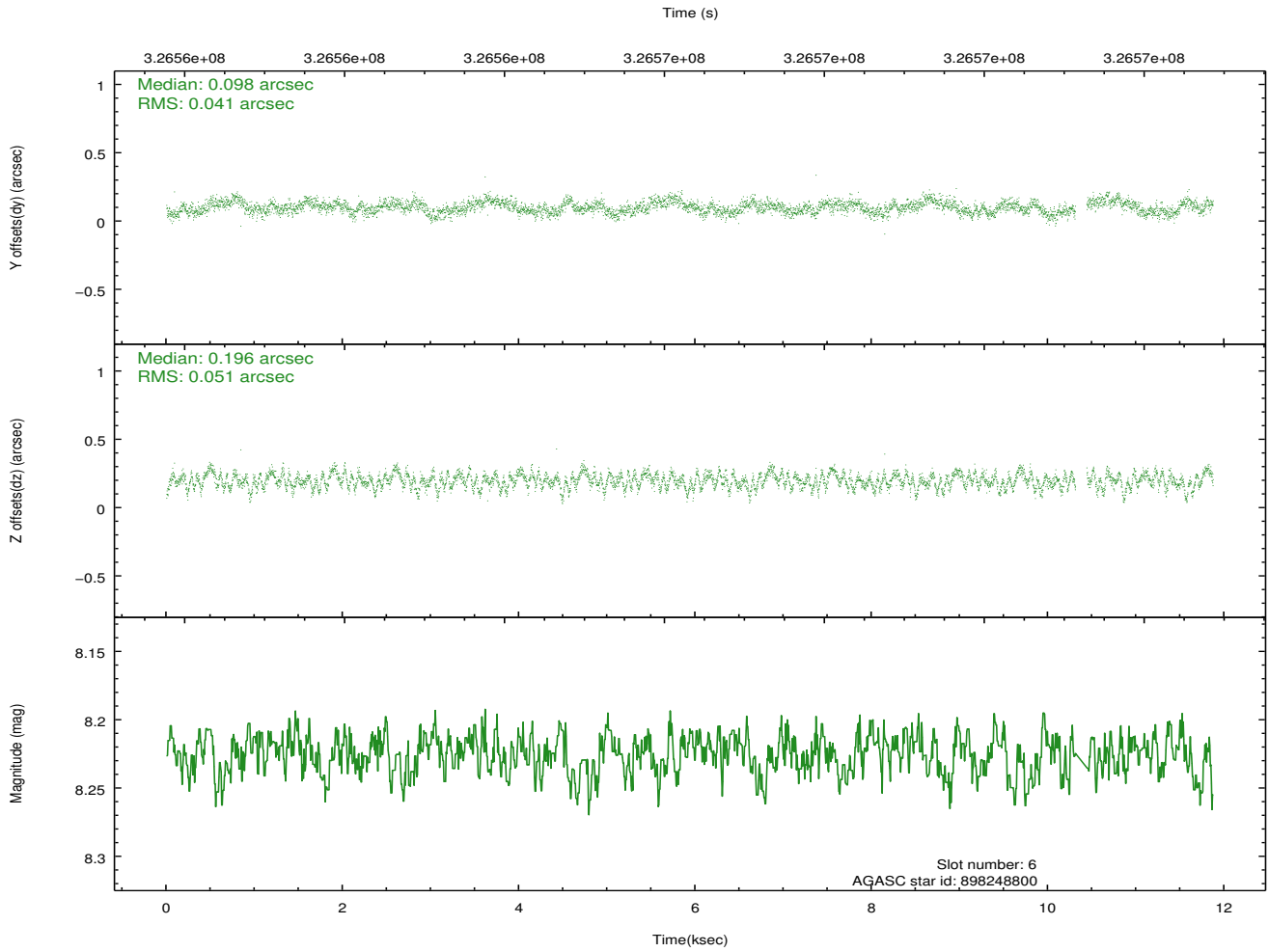
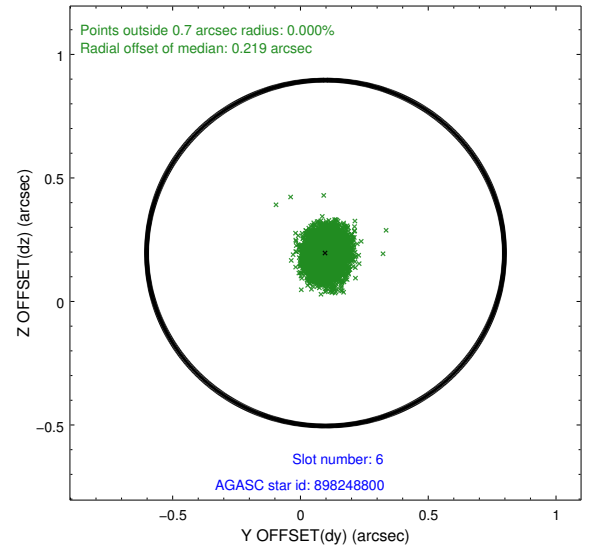
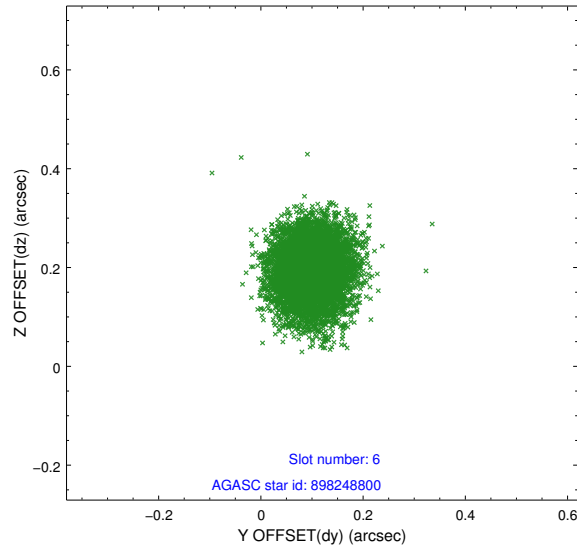
2.4.2 Slot 4



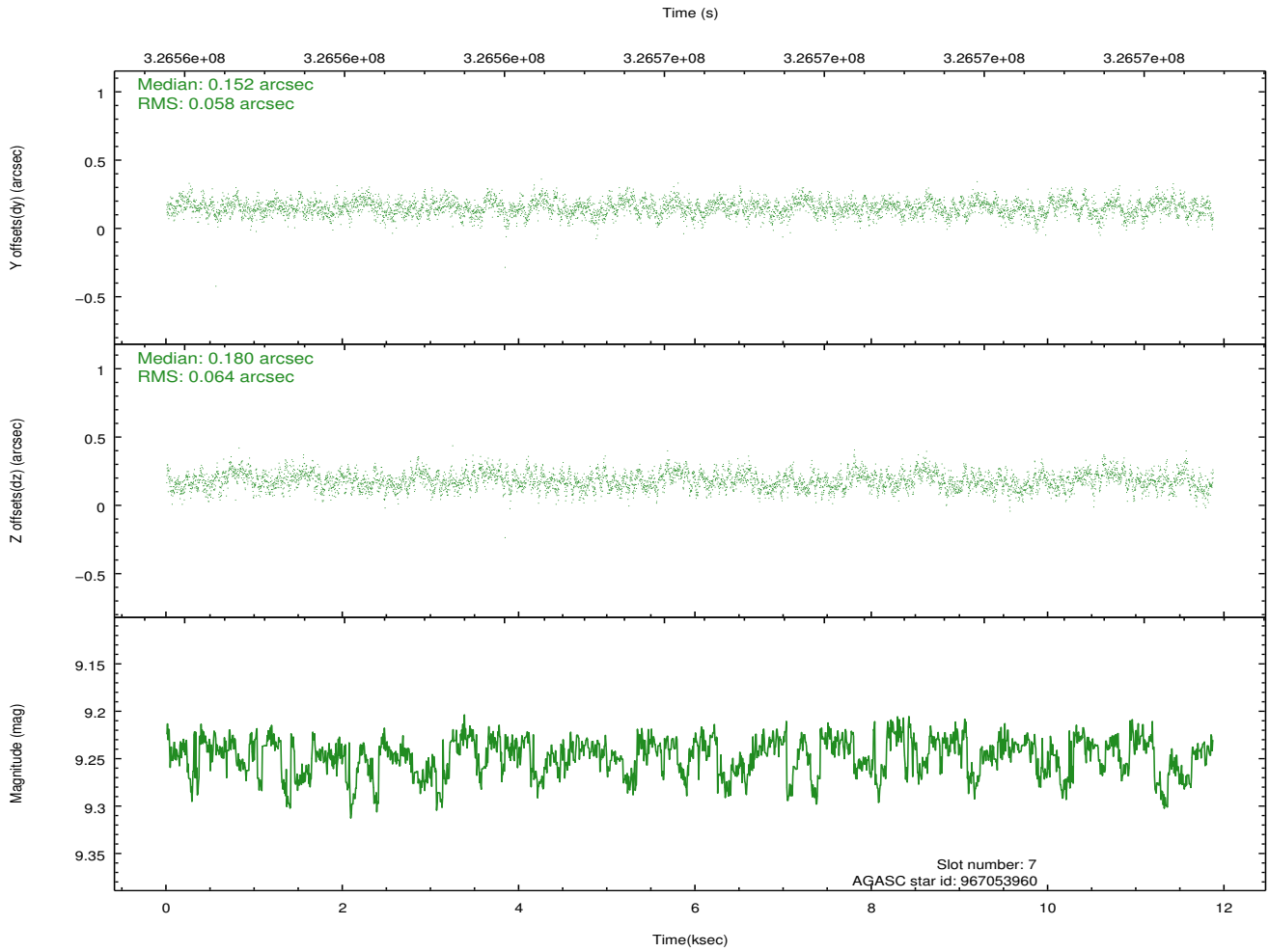
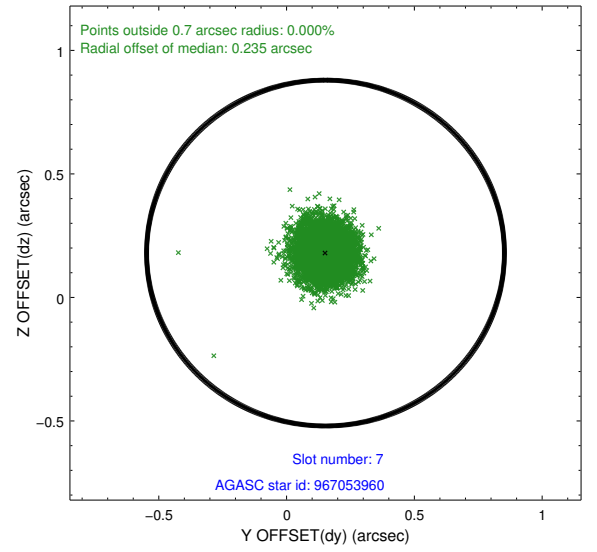
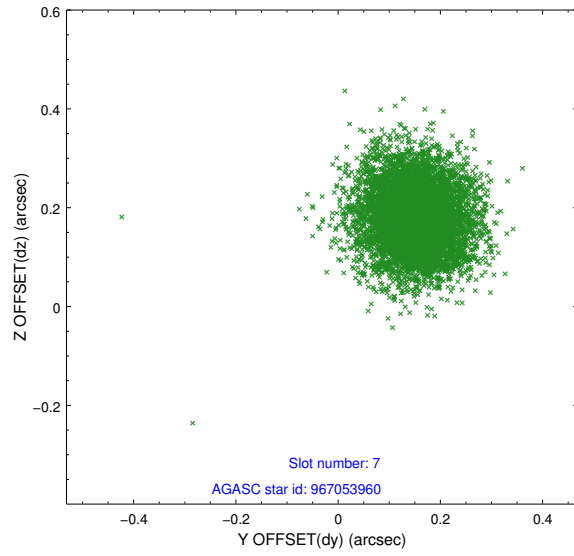
2.4.3 Slot 5



2.4.4 Slot 6

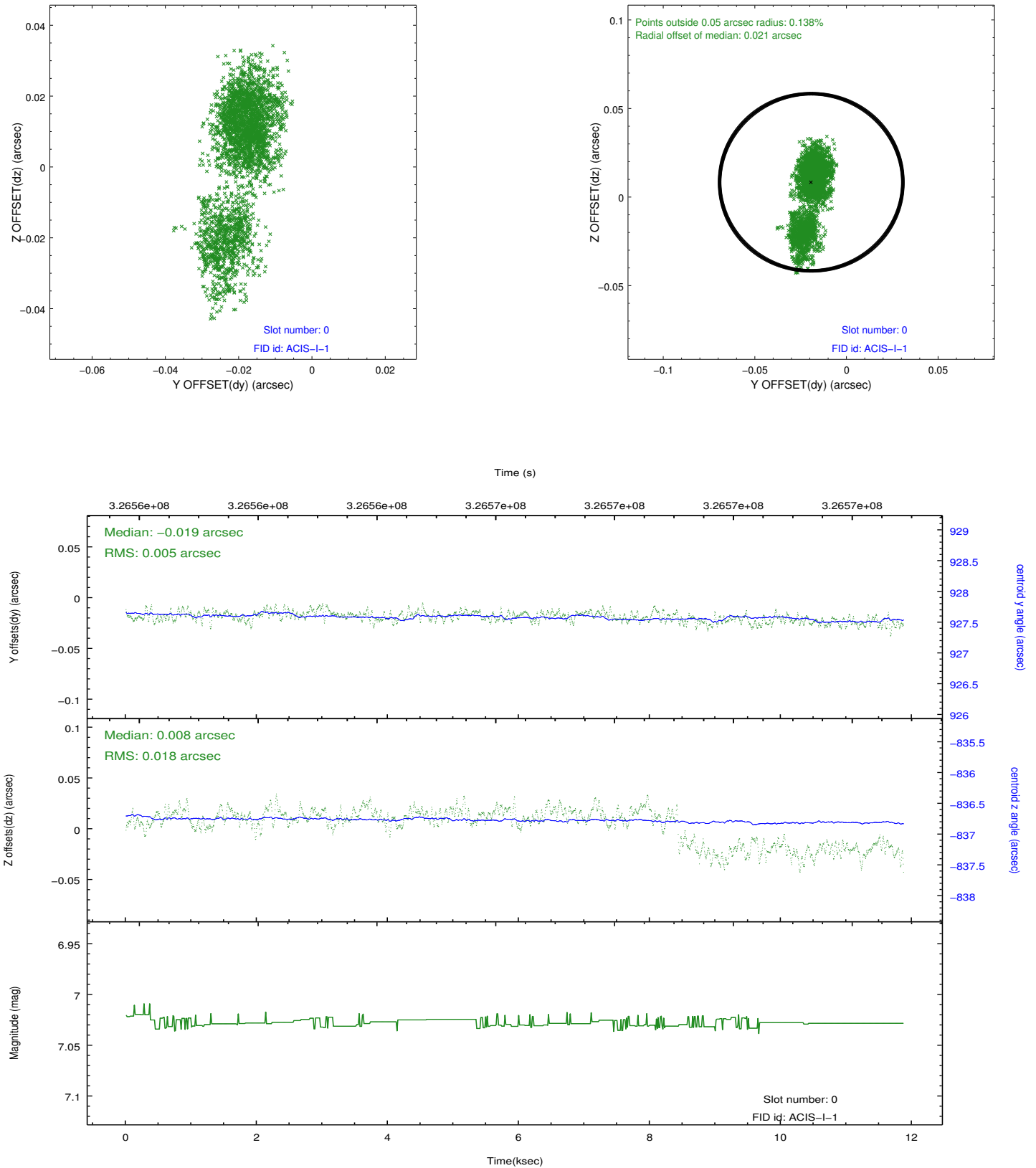


2.4.5 Slot 7

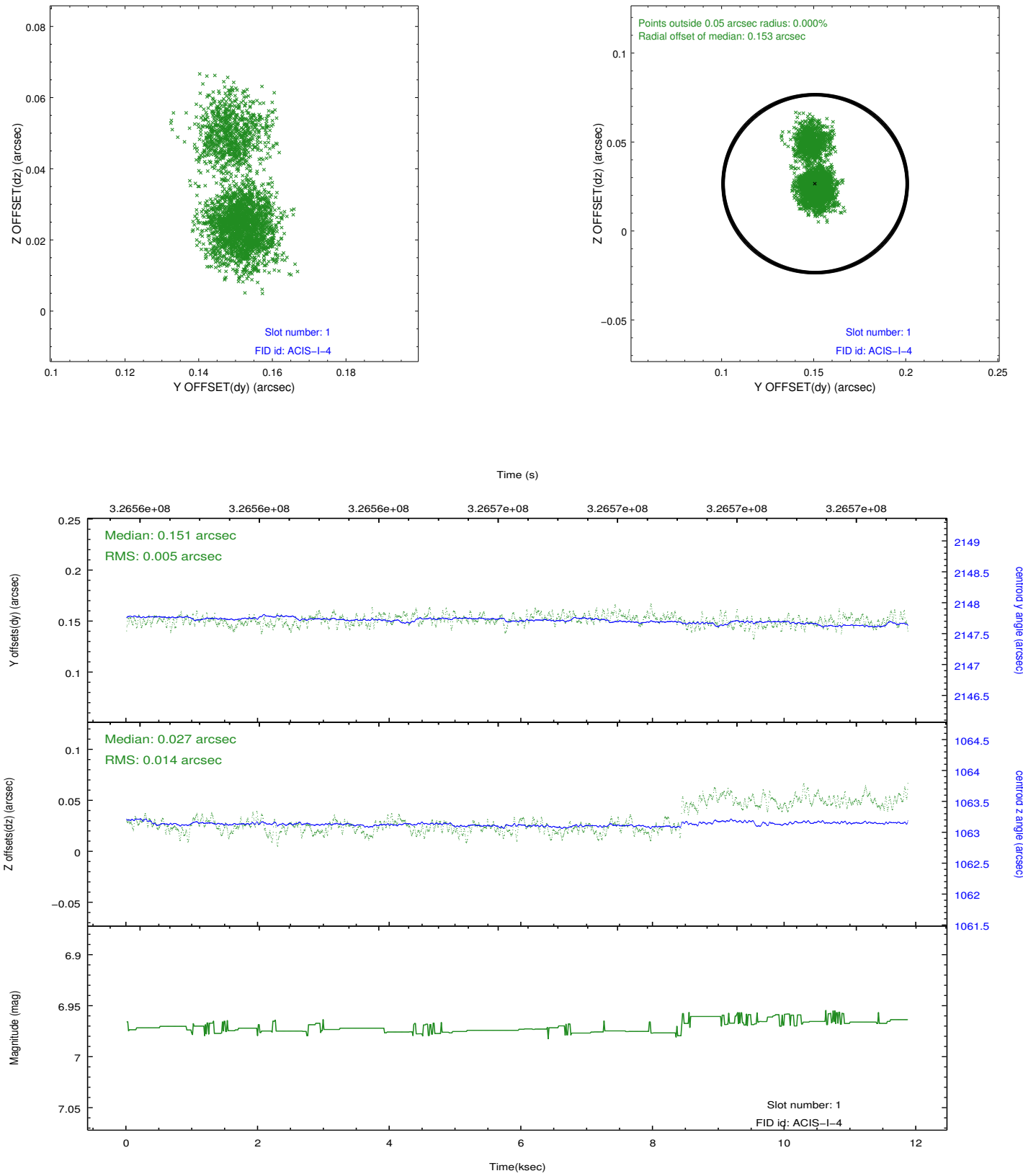


2.5 FID Slots

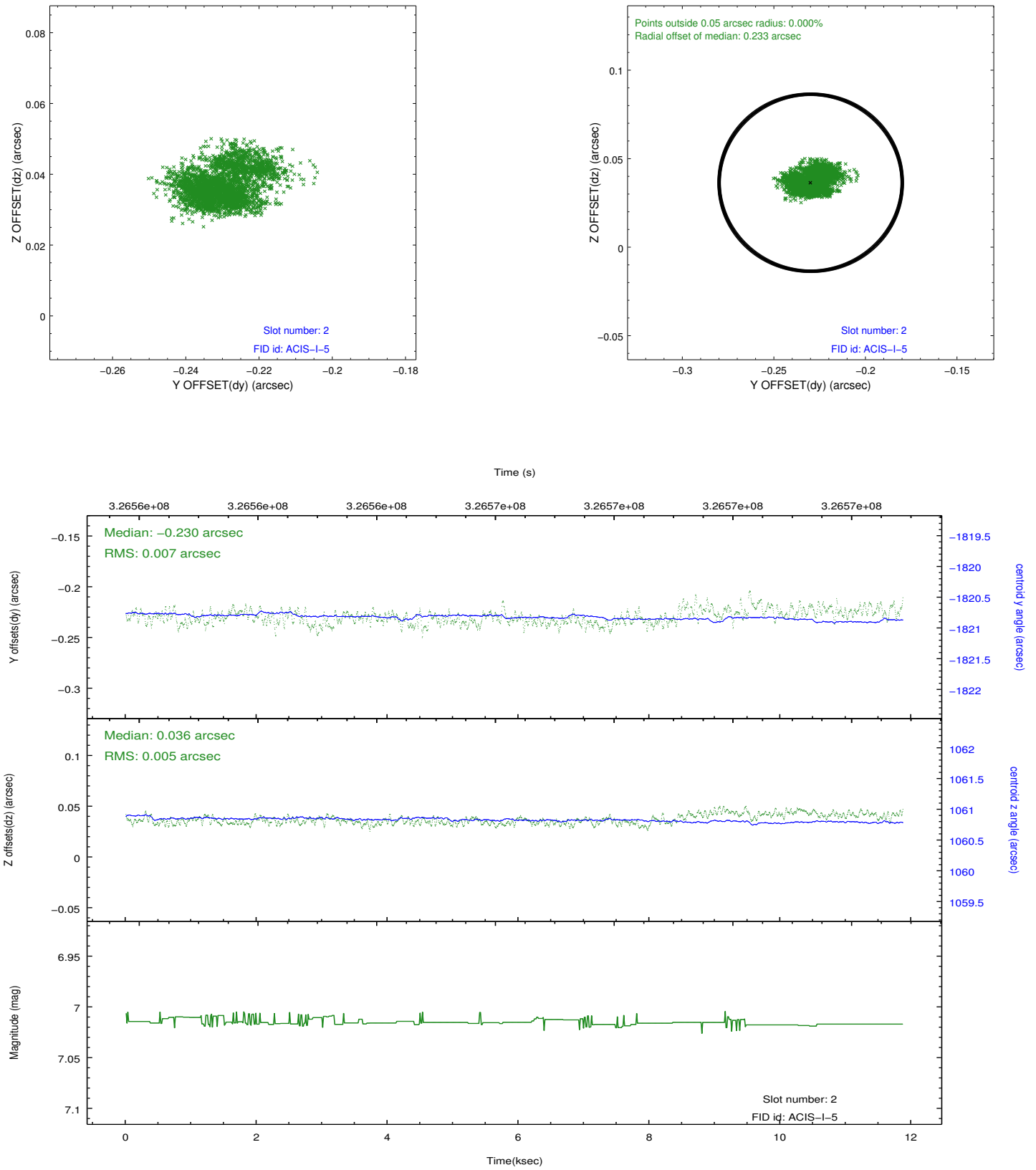
2.5.1 Slot 0



2.5.2 Slot 1



2.5.3 Slot 2



A Summary

A.1 Status

V&V Scientist	Beth Sundheim
V&V Date (YYYY-MM-DD)	2012.06.14
V&V Edition	1
V&V Disposition and Status	OK
V&V Charge Time	10.865459

A.2 Comments