

# V&V Reference Report

## L2 ASCDS Version : 7.6.10

Observation 945 - L2 Version 001  
Chandra X-Ray Center

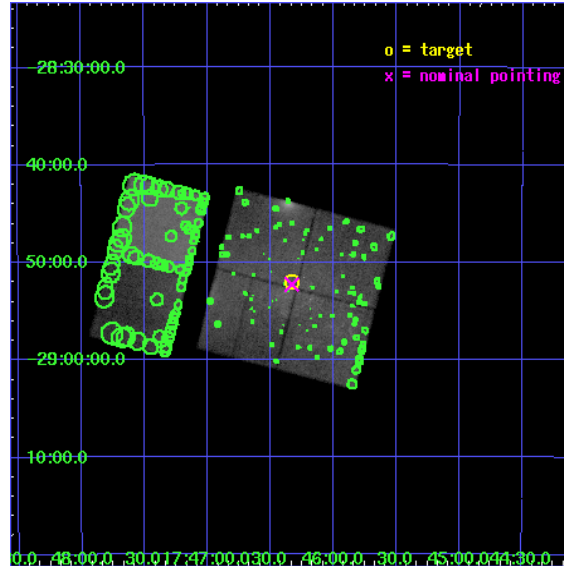
L2 Processing Date : May 30 2007

## Contents

<b>1</b>	<b>Front</b>	<b>2</b>
<b>2</b>	<b>OBI</b>	<b>3</b>
2.1	OBI . . . . .	3
2.1.1	Images . . . . .	3
2.1.2	Bias . . . . .	3
2.1.3	Parameters . . . . .	4
2.1.4	Events . . . . .	4
2.2	Compared Parameters . . . . .	5
2.3	Aspect . . . . .	6
2.4	Star Slots . . . . .	9
2.4.1	Slot 3 . . . . .	9
2.4.2	Slot 4 . . . . .	10
2.4.3	Slot 5 . . . . .	11
2.4.4	Slot 6 . . . . .	12
2.4.5	Slot 7 . . . . .	13
2.5	FID Slots . . . . .	14
2.5.1	Slot 0 . . . . .	14
2.5.2	Slot 1 . . . . .	15
2.5.3	Slot 2 . . . . .	16
<b>3</b>	<b>Point Sources</b>	<b>17</b>
<b>A</b>	<b>Summary</b>	<b>18</b>
A.1	Status . . . . .	18
A.2	Comments . . . . .	18

# 1 Front

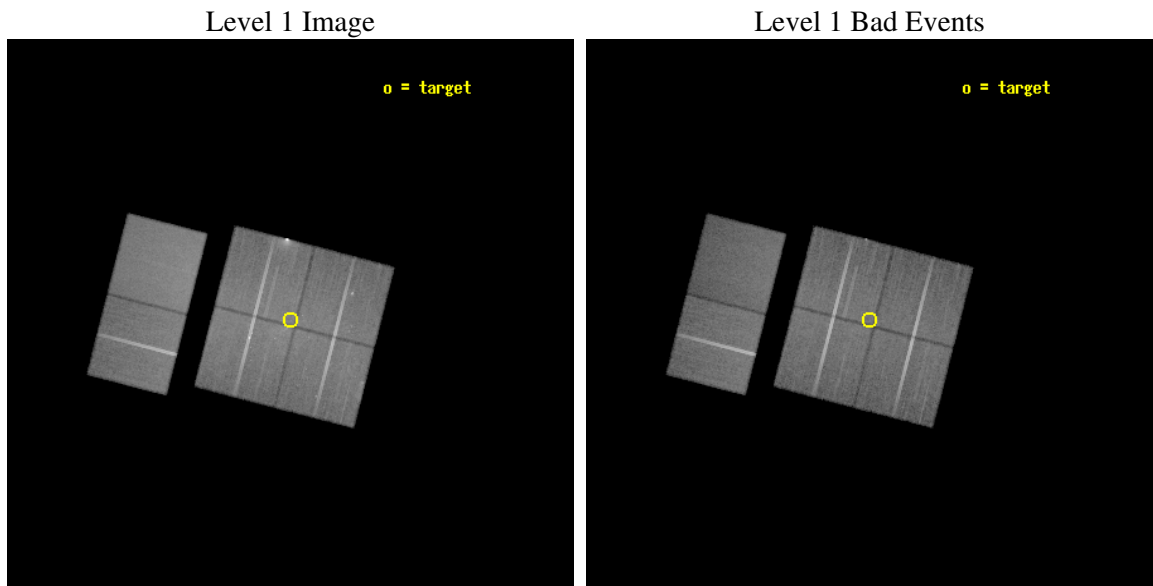
seq_num	900017
obs_id	945
title	THE ASSOCIATION OF THE HOT X-RAY GAS WITH THE NONTHERMAL RADIO ARC NEAR THE GALACTIC CENTER
observer	Professor Farhad Yusef-Zadeh
object	GALACTIC CENTER ARC
dtcycle	0
cycle	P
ra_targ	266.583333
dec_targ	-28.86667
ra_nom	266.58248380755
dec_nom	-28.871538161493
roll_nom	284.40918250183
revision	3
ontime	49376.000045985
livetime	48750.771402745
ontime0	49372.759055808
ontime1	49369.518065676
ontime2	49369.518095583
ontime3	49376.000045985
ontime6	49369.518105507
ontime7	49376.000045985
l2events	569340



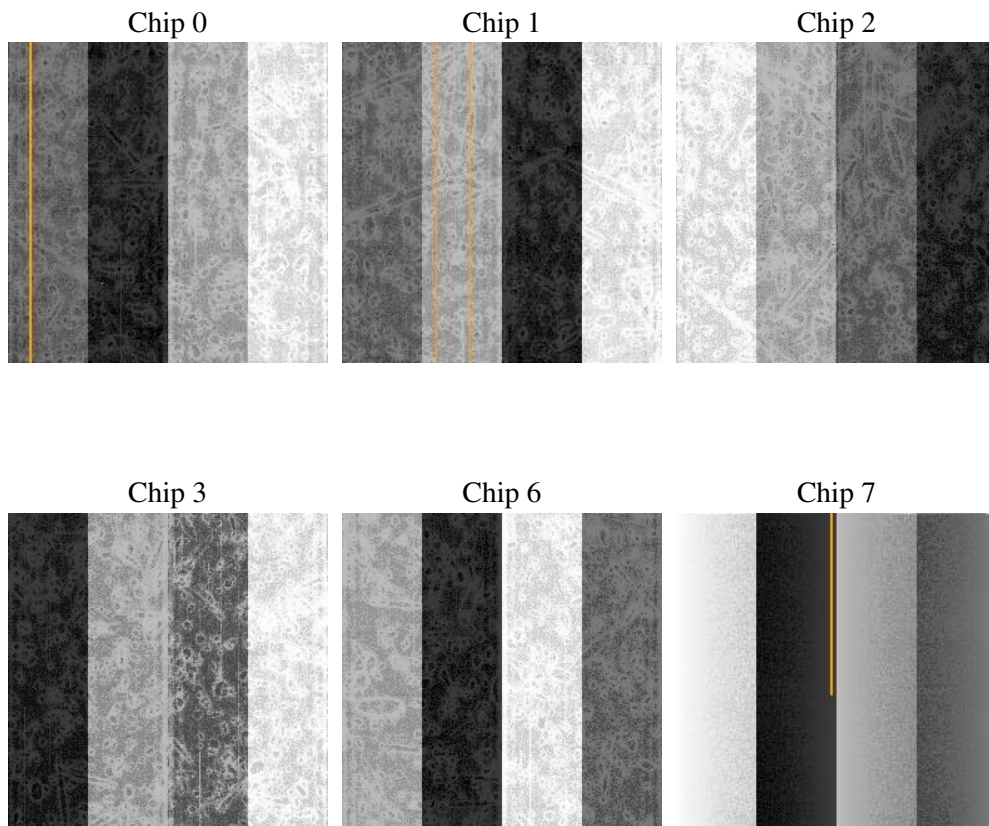
## 2 OBI

### 2.1 OBI

#### 2.1.1 Images



#### 2.1.2 Bias



### 2.1.3 Parameters

obi_num	0
ascdsver	7.6.10
caldsver	3.4.0
date	2007-05-30T16:23:59
revision	3

sched_exp_time	49465.000000
ontime	49376.000045985
ontime0	49372.759055808
ontime1	49369.518065676
ontime2	49369.518095583
ontime3	49376.000045985
ontime6	49369.518105507
ontime7	49376.000045985
l1events	2260087

### 2.1.4 Events

	ccd 0	ccd 1	ccd 2	ccd 3	ccd 6	ccd 7
level 1 events	369088	347017	392130	395876	351171	404805
rejected events	267985	262740	298409	292113	299517	225301
rejected %	72%	75%	76%	73%	85%	55%

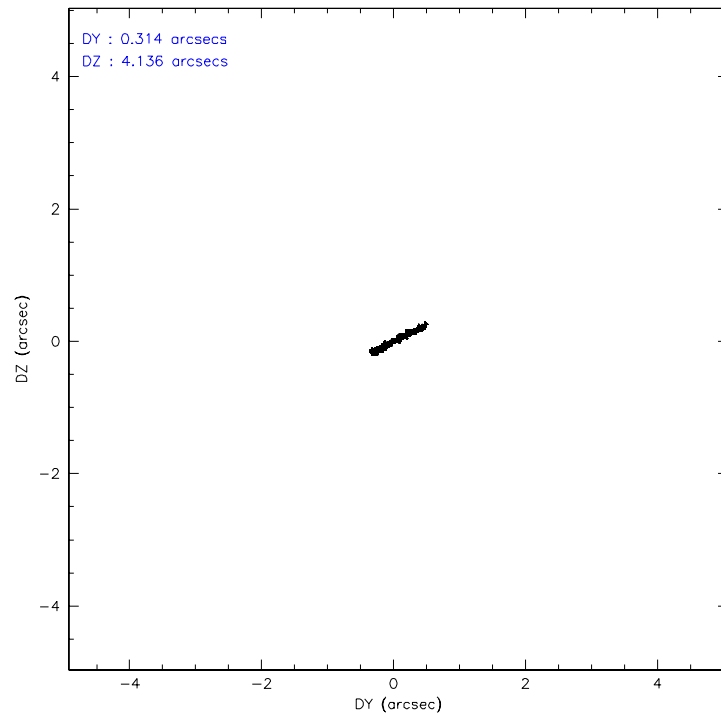
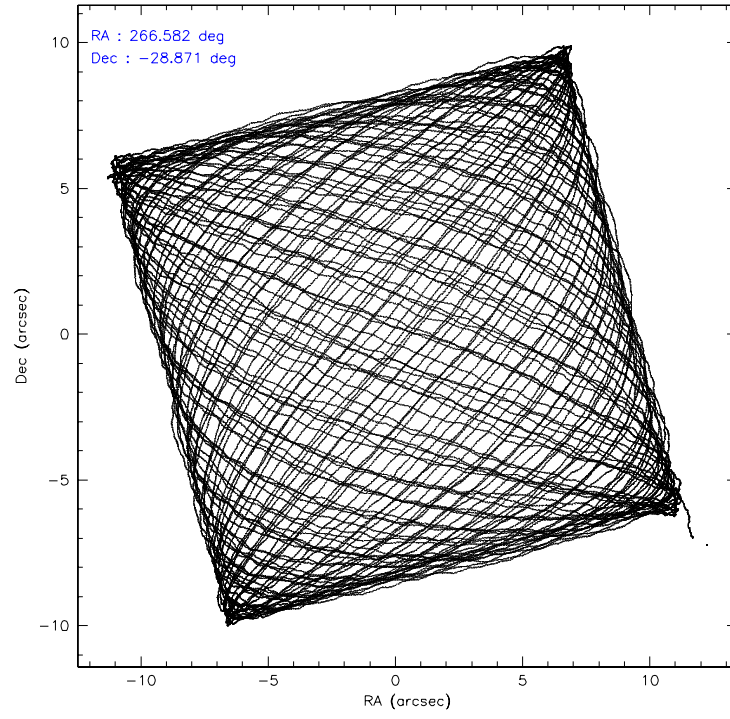
	ccd 0	ccd 1	ccd 2	ccd 3	ccd 6	ccd 7
grade 0 events	61597	48543	57815	62504	26694	18696
	16%	13%	14%	15%	7%	4%
grade 1 events	429	282	363	466	228	373
	0%	0%	0%	0%	0%	0%
grade 2 events	16115	13650	14799	16314	8978	36367
	4%	3%	3%	4%	2%	8%
grade 3 events	6664	6063	6123	6791	4260	17260
	1%	1%	1%	1%	1%	4%
grade 4 events	6418	6051	5778	6832	4224	16833
	1%	1%	1%	1%	1%	4%
grade 5 events	10570	11332	10341	11664	12676	38101
	2%	3%	2%	2%	3%	9%
grade 6 events	10315	9975	9209	11326	7502	90365
	2%	2%	2%	2%	2%	22%
grade 7 events	256980	251121	287702	279979	286609	186810
	69%	72%	73%	70%	81%	46%

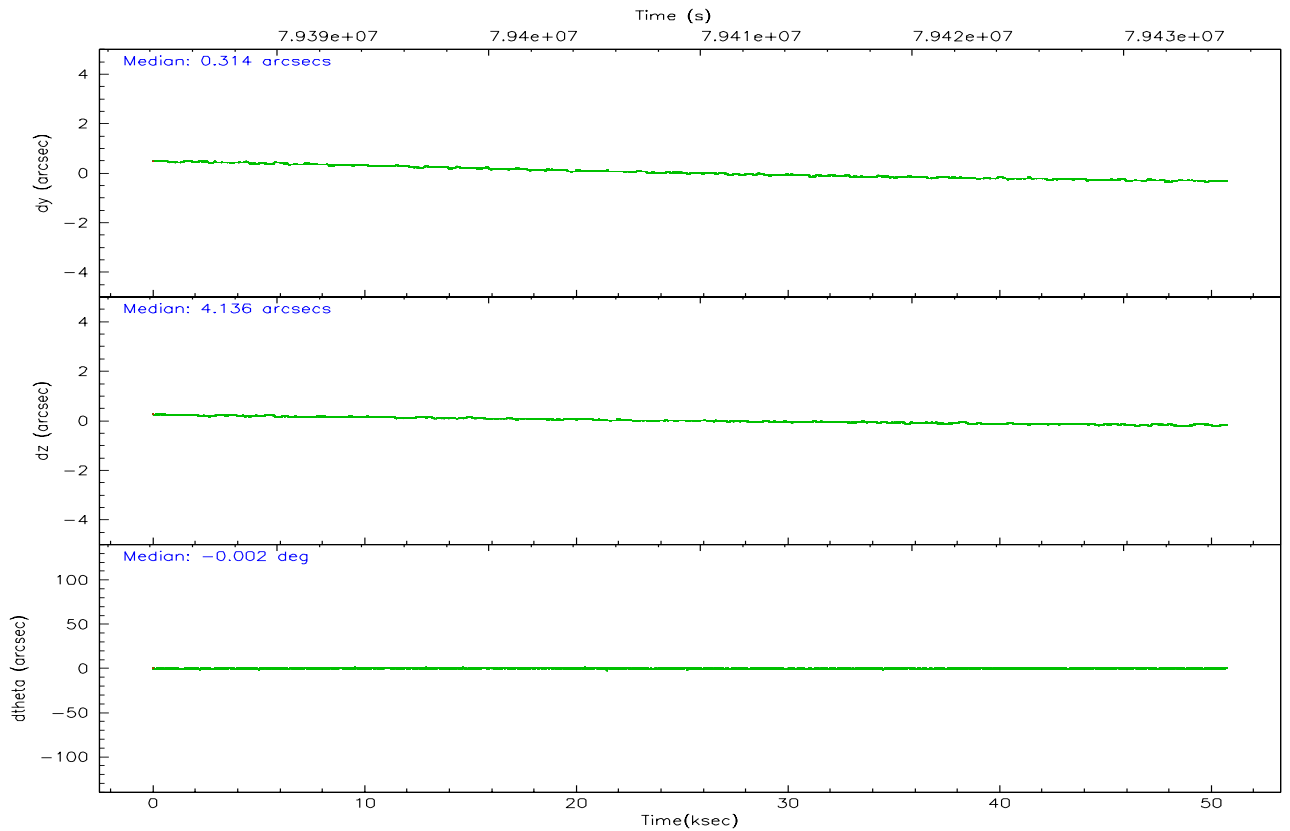
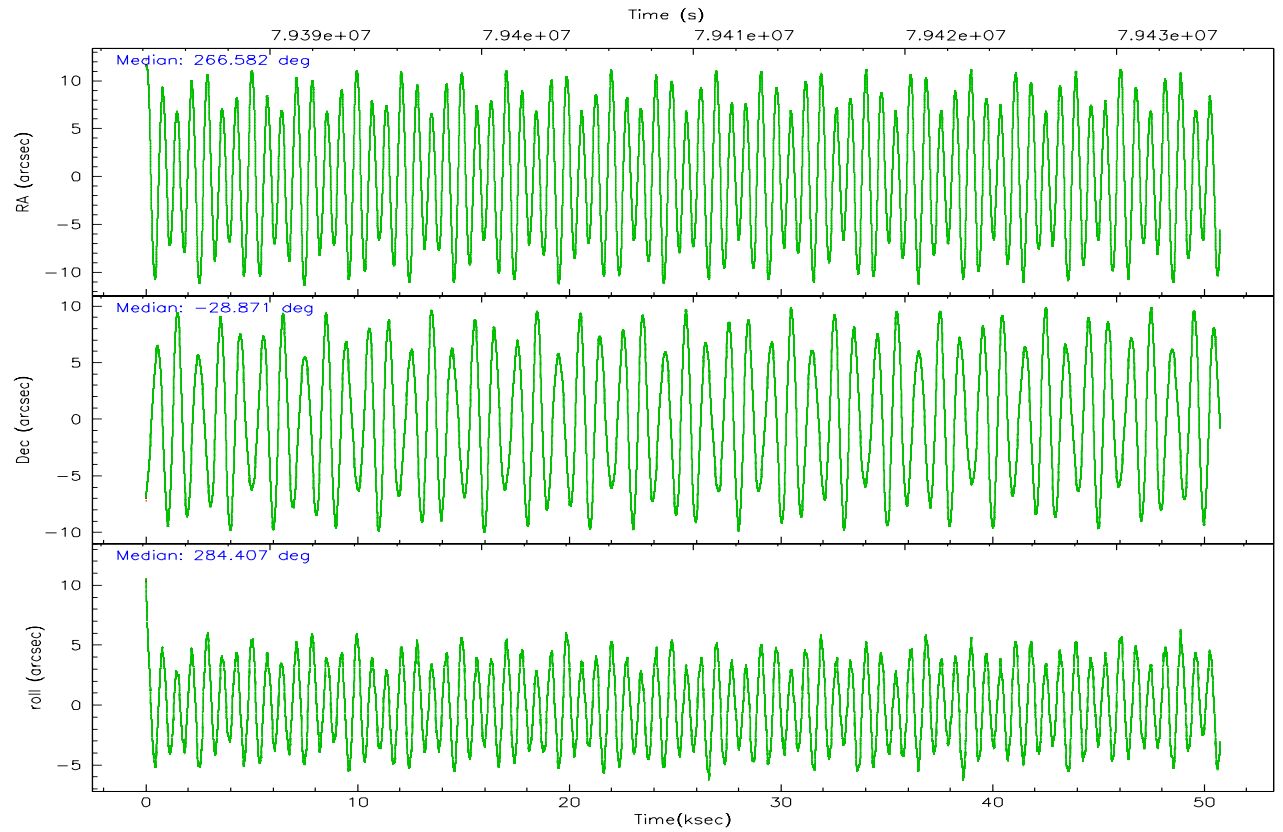


## 2.2 Compared Parameters

Parameter	Planned	Actual	Parameter	Planned	Actual
Instrument	ACIS	ACIS	Obspar format version number	6	6
Detector	ACIS-012367	ACIS-012367	Obspar file type	PREDICTED	ACTUAL
Grating	NONE	NONE	Obspar update status	NONE	UPDATED
Data mode	VFAINT	VFAINT	Number of optional ACIS chips dropped	0	0
Observation mode	POINTING	POINTING	On-chip summing requested	N	N
Pointing RA	266.560576	266.5824838075453	Subarray requested	NONE	NONE
Pointing Dec	-28.851775	-28.87153816149338	Alternating exposures requested	N	N
Pointing Roll	284.189920	284.4091825018348	Primary exposure time	3.200000	3.2
SIM focus pos (mm)	-0.782348	-0.7809083437167272			
SIM defocus (mm)	0	0.001439871863259334			
SIM translation stage pos (mm)	-233.592463	-233.5874344608287			
SIM translation stage offset (mm)	0	-0.005018542100998502			
Observation start time	79385424.184000	79383919.28638899			
Observation start date	2000-07-07T19:29:20	2000-07-07T19:05:19			
Observation end time	79434889.184000	79435990.825808			
Observation end date	2000-07-08T09:13:45	2000-07-08T09:33:10			
Read mode	TIMED	TIMED			

## 2.3 Aspect



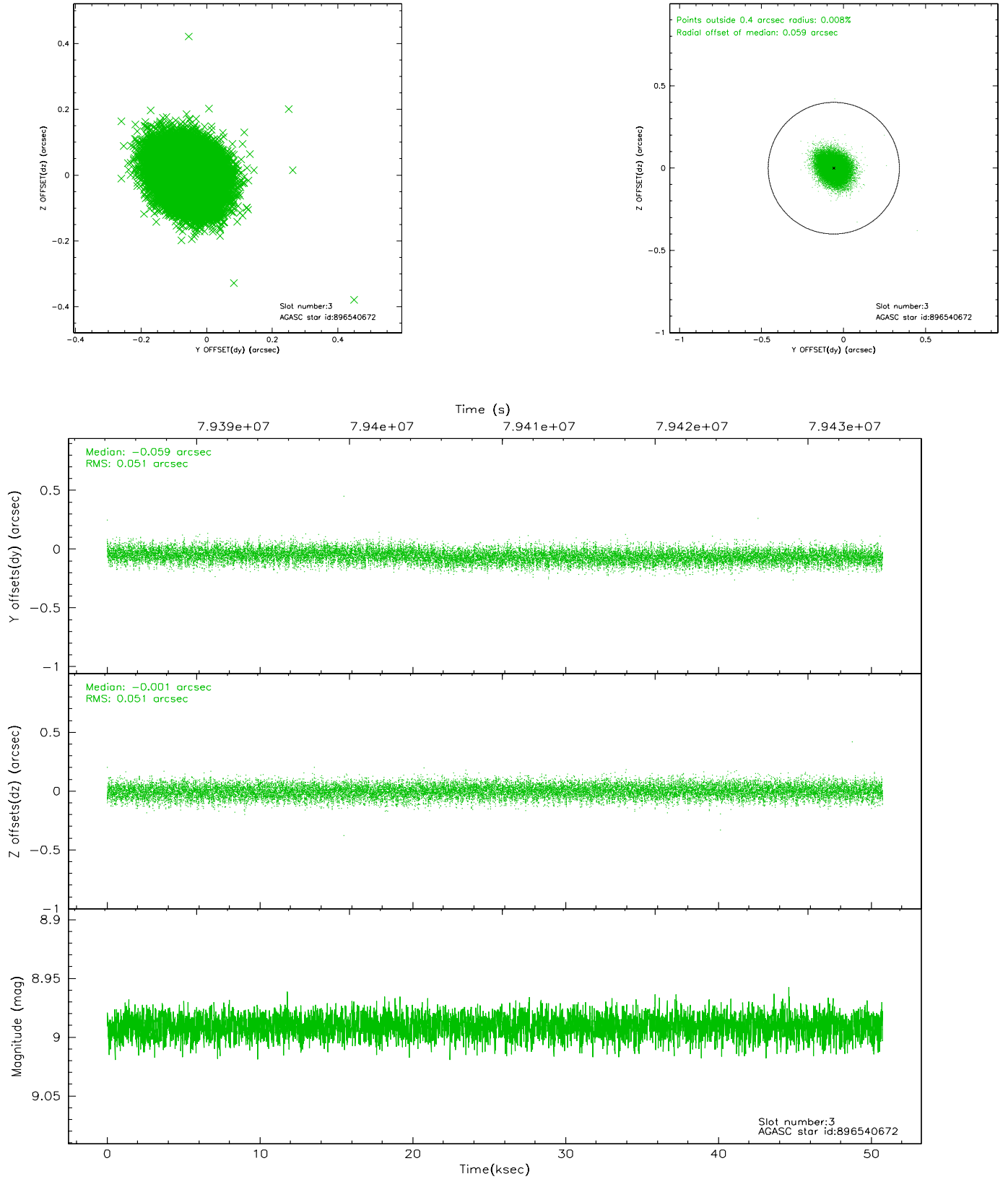


### Slot Statistics

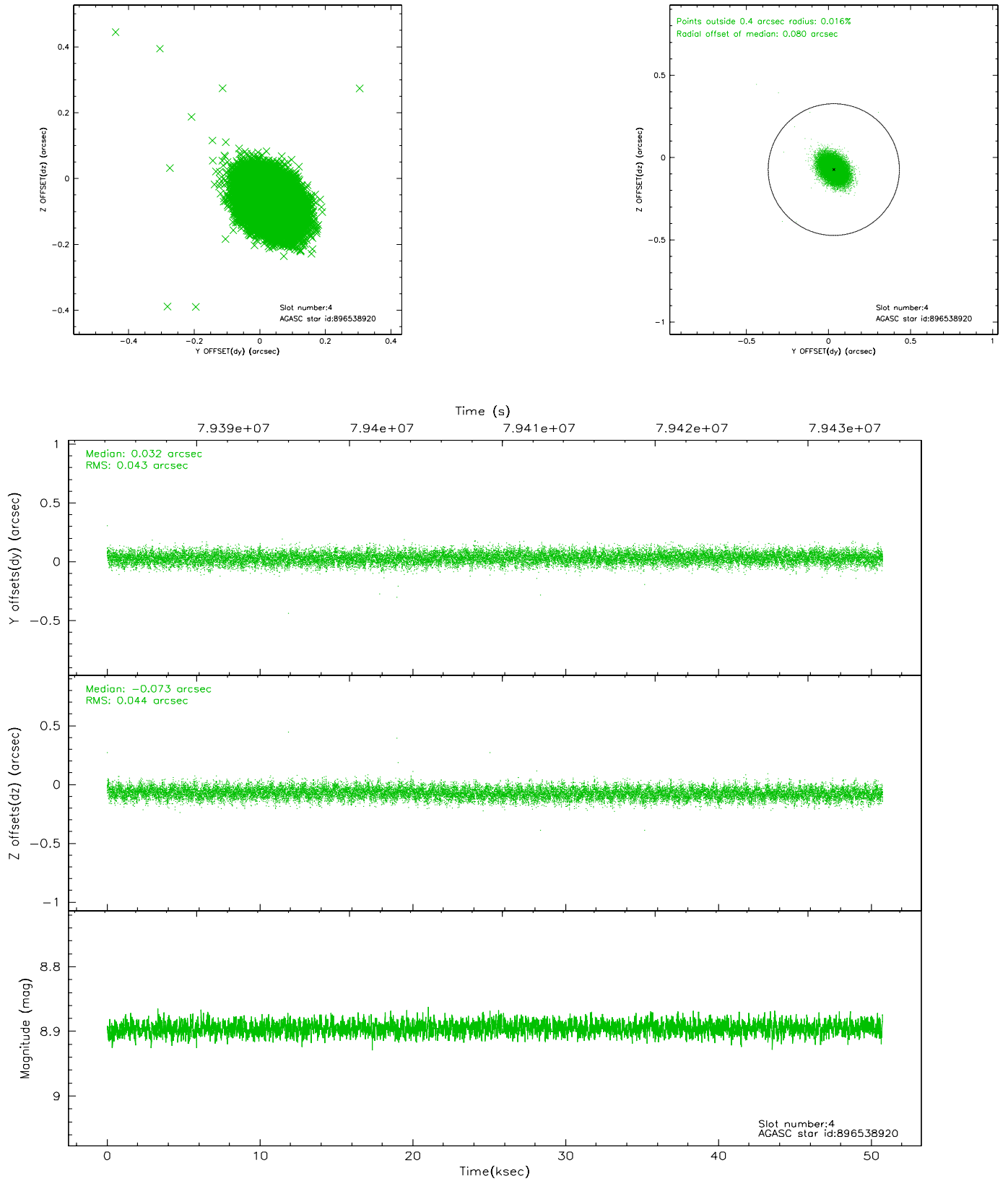
slot	status	id	mag	n_pts	med_dy	med_dz	dr1	dr2	ra	dec	mean_y	mean_z
0	FID	ACIS-I-1	7.25	12377	-0.037	0.085	0.015	0.024	0.000000	0.000000	939.48	-827.38
1	FID	ACIS-I-5	7.24	12377	-0.056	0.024	0.022	0.033	0.000000	0.000000	-1808.66	1070.04
2	FID	ACIS-I-6	7.26	12377	-0.002	-0.040	0.011	0.017	0.000000	0.000000	405.07	1714.47
3	GUIDE	896540672	8.99	24745	-0.059	-0.001	0.077	0.124	266.662941	-28.185372	-2245.70	903.48
4	GUIDE	896538920	8.90	24748	0.032	-0.073	0.064	0.107	266.278728	-29.143592	802.75	-1116.41
5	GUIDE	896534000	9.27	24746	-0.075	0.055	0.079	0.130	267.299113	-29.228915	1892.51	1915.50
6	GUIDE	896542744	9.41	24738	0.120	-0.050	0.083	0.139	266.765496	-29.248460	1543.52	274.44
7	GUIDE	896544560	9.01	24751	-0.016	0.069	0.066	0.106	265.902975	-28.371895	-2179.36	-1596.88

## 2.4 Star Slots

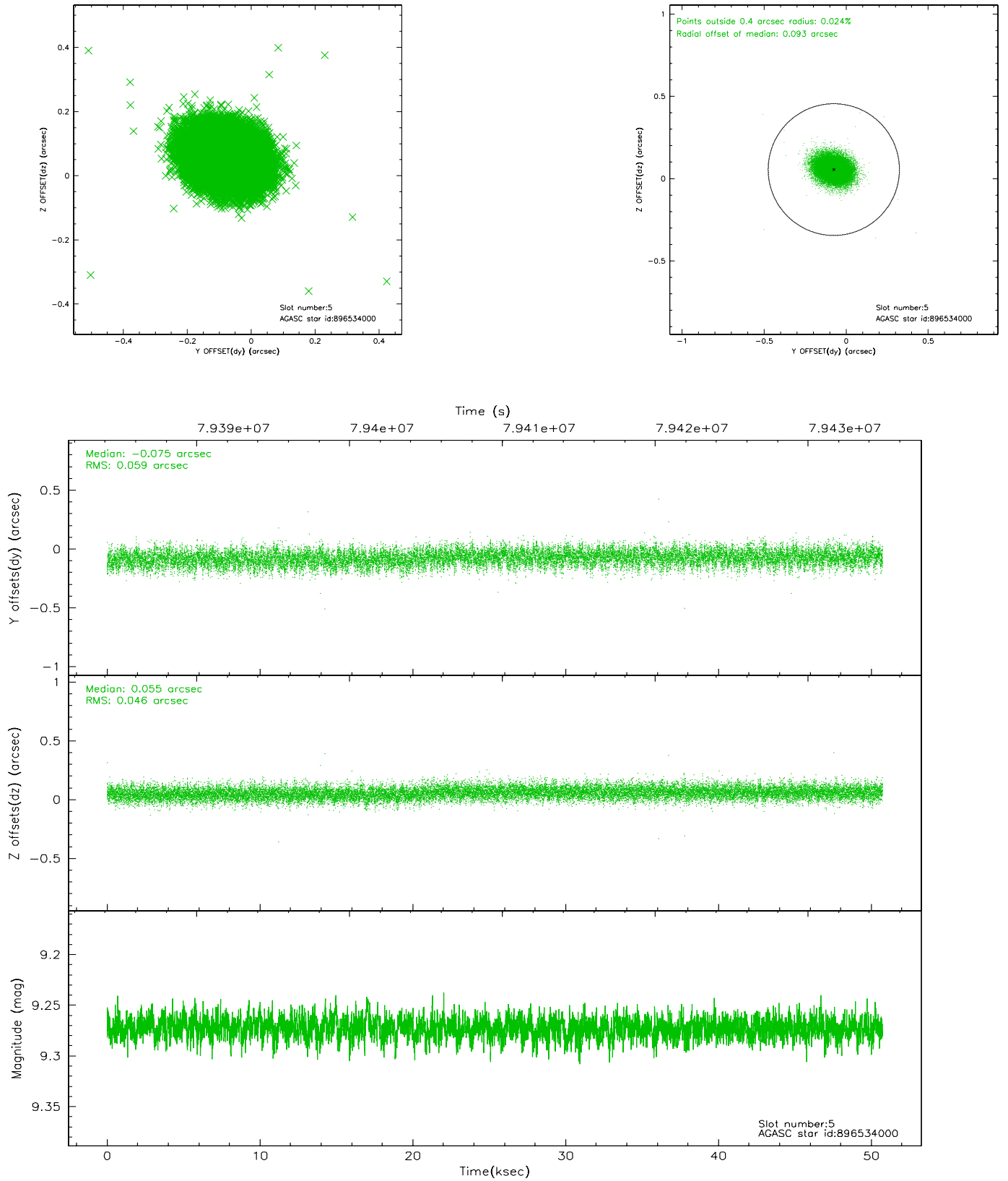
### 2.4.1 Slot 3



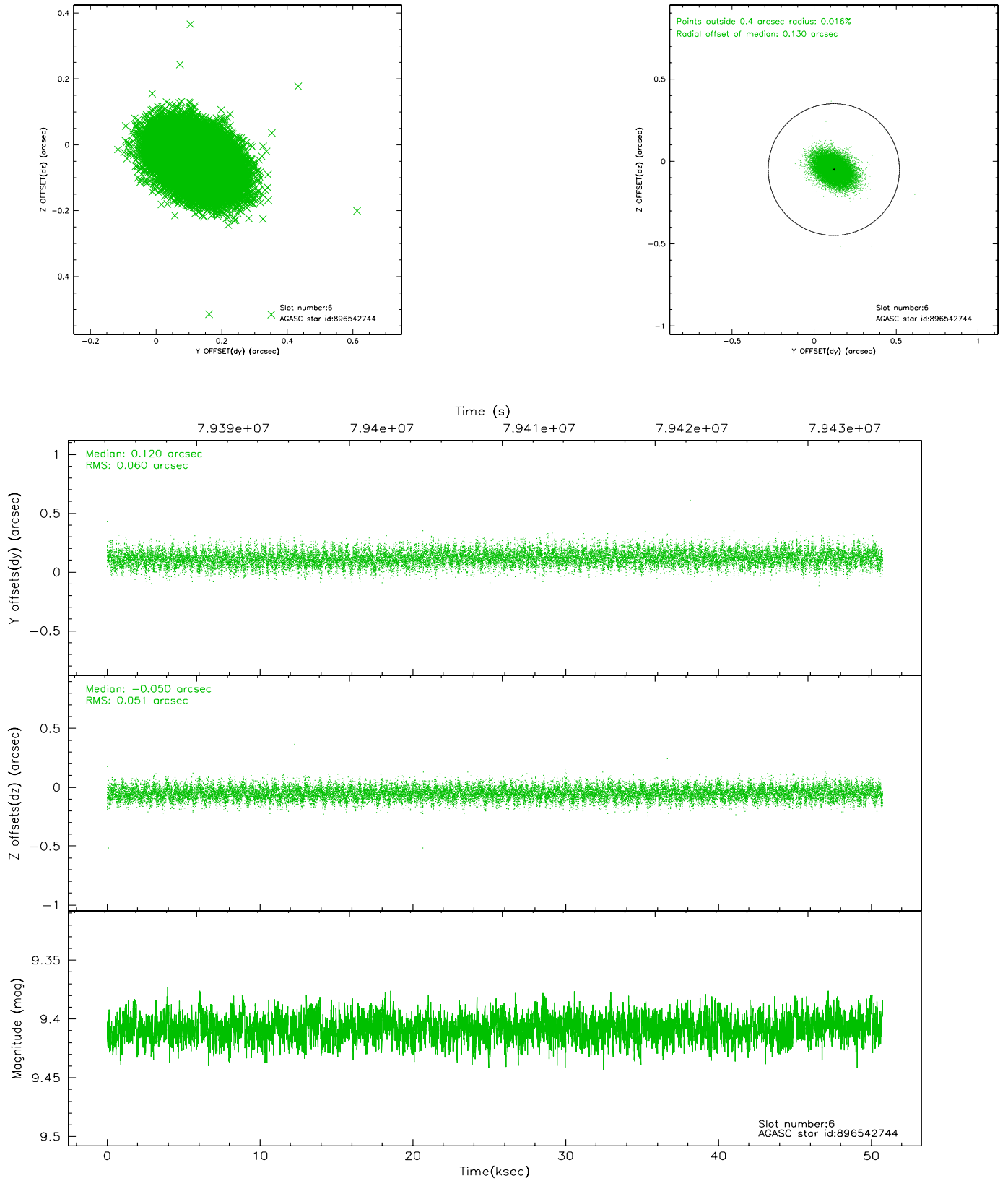
## 2.4.2 Slot 4



### 2.4.3 Slot 5

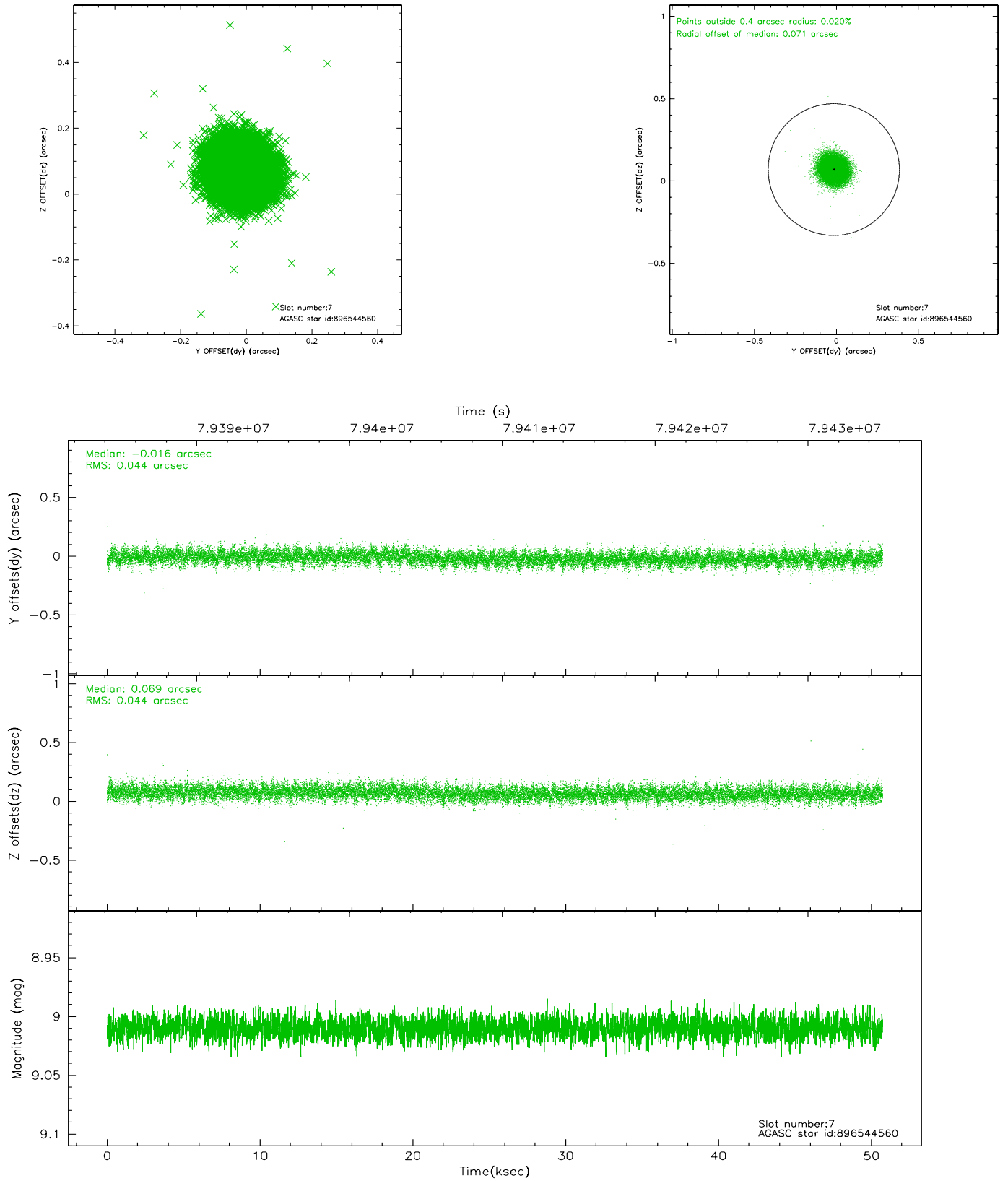


## 2.4.4 Slot 6



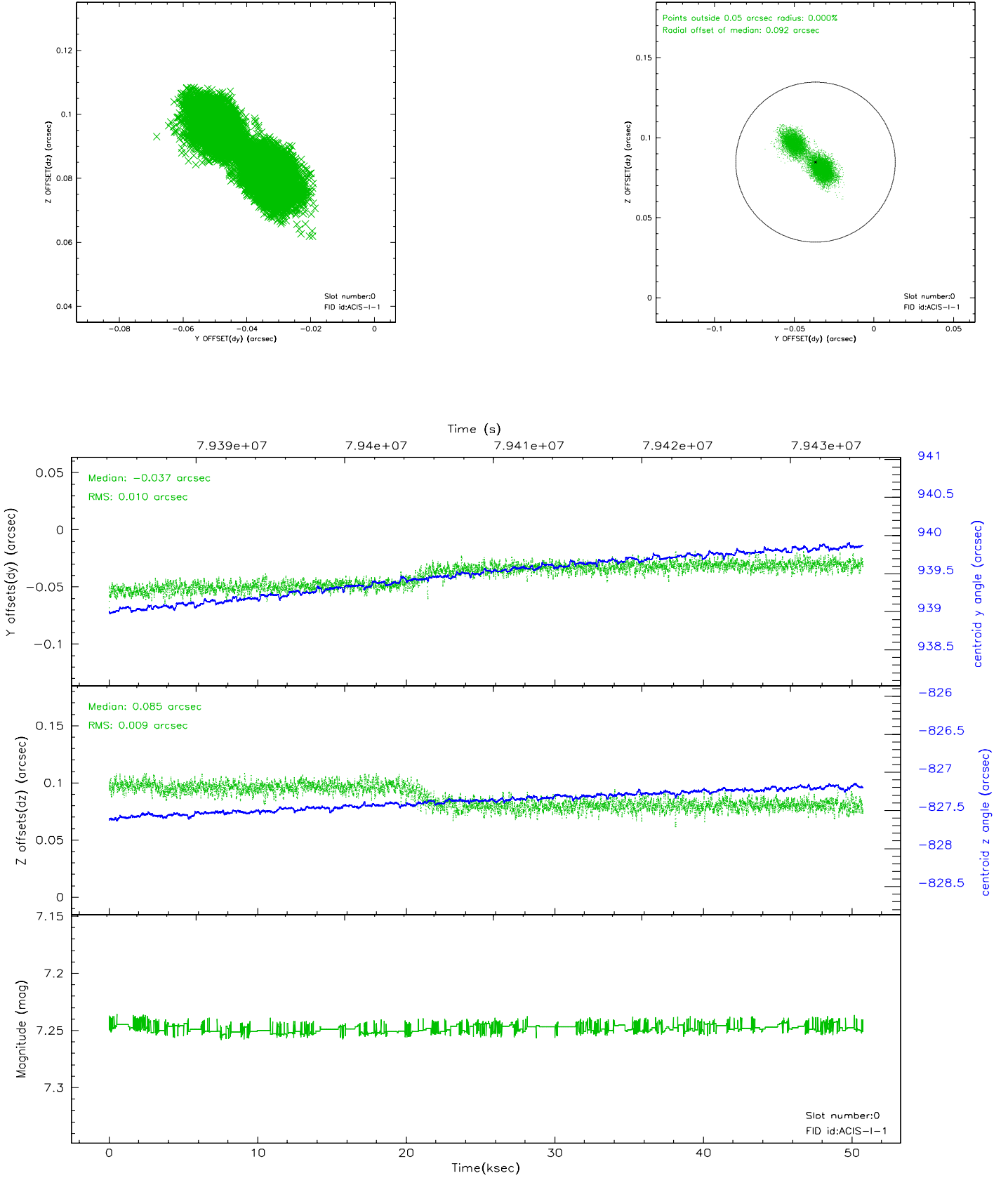


## 2.4.5 Slot 7

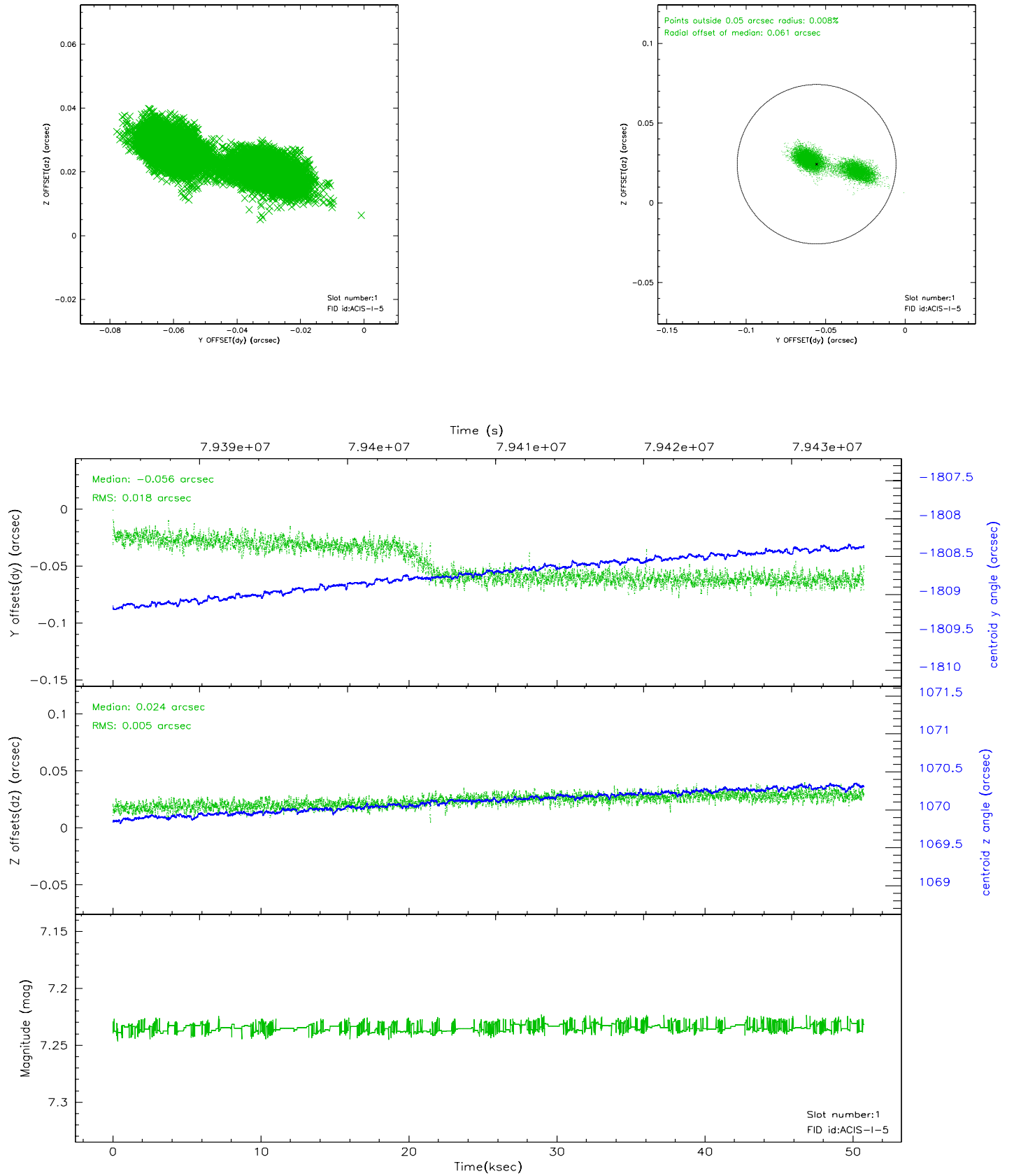


## 2.5 FID Slots

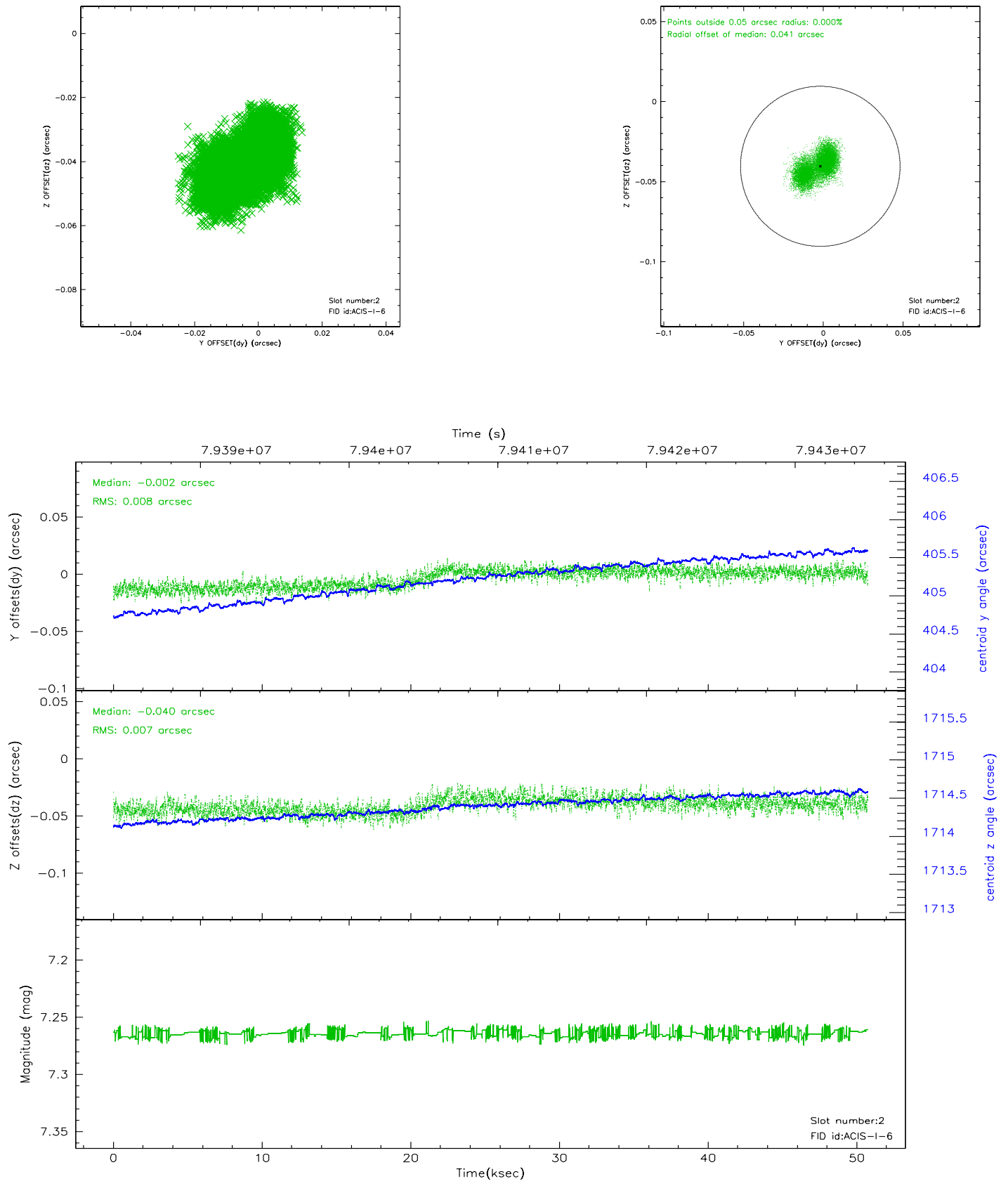
### 2.5.1 Slot 0



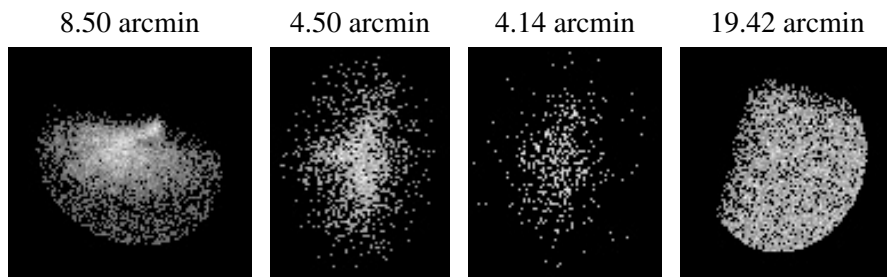
## 2.5.2 Slot 1



### 2.5.3 Slot 2



### 3 Point Sources



## A Summary

### A.1 Status

V&V Scientist	Jen Lauer
V&V Date (YYYY-MM-DD)	2007.05.30
V&V Edition	1
V&V Disposition and Status	OK
V&V Charge Time	49.376

### A.2 Comments