

V&V Reference Report

L2 ASCDS Version : 8.4.4

Observation 9385 - L2 Version 2
Chandra X-Ray Center

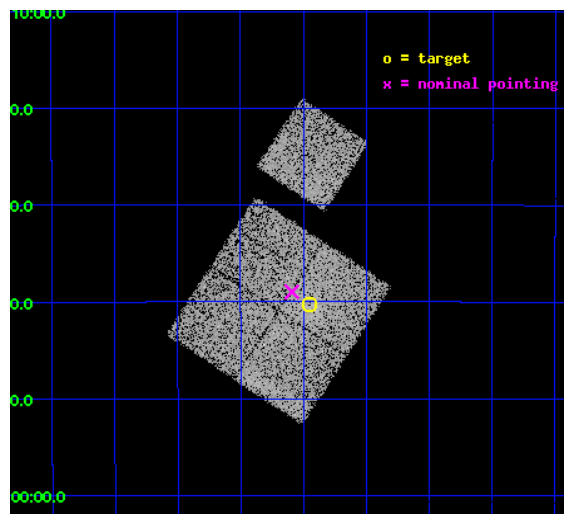
L2 Processing Date : May 25 2012

Contents

1	Front	2
2	OBI	3
2.1	OBI	3
2.1.1	Images	3
2.1.2	Bias	3
2.1.3	Parameters	4
2.1.4	Events	4
2.2	Compared Parameters	5
2.3	Aspect	6
2.4	Star Slots	9
2.4.1	Slot 3	9
2.4.2	Slot 4	10
2.4.3	Slot 5	11
2.4.4	Slot 6	12
2.4.5	Slot 7	13
2.5	FID Slots	14
2.5.1	Slot 0	14
2.5.2	Slot 1	15
2.5.3	Slot 2	16
A	Summary	17
A.1	Status	17
A.2	Comments	17

1 Front

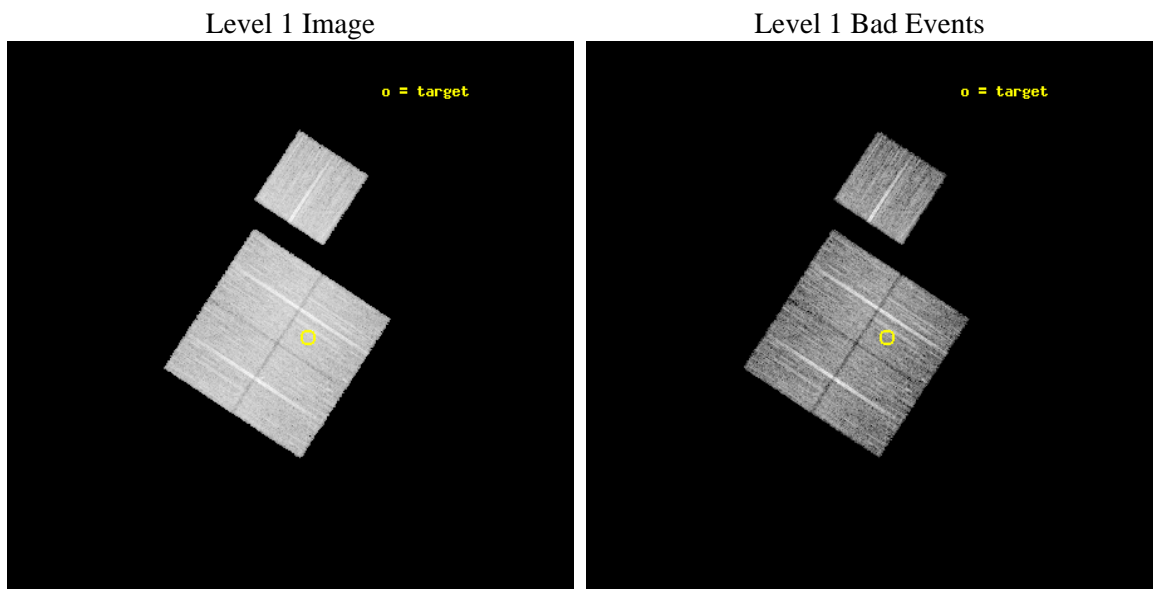
seq_num	800722	Sequence number
obs_id	9385	Observation id
title	SCALING RELATIONS FOR LOW-MASS GALAXY CLUSTERS AND GROUPS	Proposal
observer	Dr. Alexey Vikhlinin	Principal investigator
object	cl0340-2840	Source name
dtcycle	0	
cycle	P	events from which exps? Prim/Second/Both
ra_targ	55.113333	Observer's specified target RA [deg]
dec_targ	-28.672222	Observer's specified target Dec [deg]
ra_nom	55.147884352263	Nominal RA [deg]
dec_nom	-28.64964077868	Nominal Dec [deg]
roll_nom	33.225260137395	Nominal Roll [deg]
revision	2	Processing version of data
ontime	9770.4431125522	Sum of GTIs [s]
livetime	9642.7850803911	Livetime [s]
ontime0	9773.4609828591	Sum of GTIs [s]
ontime1	9770.3610920906	Sum of GTIs [s]
ontime2	9773.5430628657	Sum of GTIs [s]
ontime3	9770.4431125522	Sum of GTIs [s]
ontime6	9767.1379621625	Sum of GTIs [s]
l2events	36587	Number of level 2 events



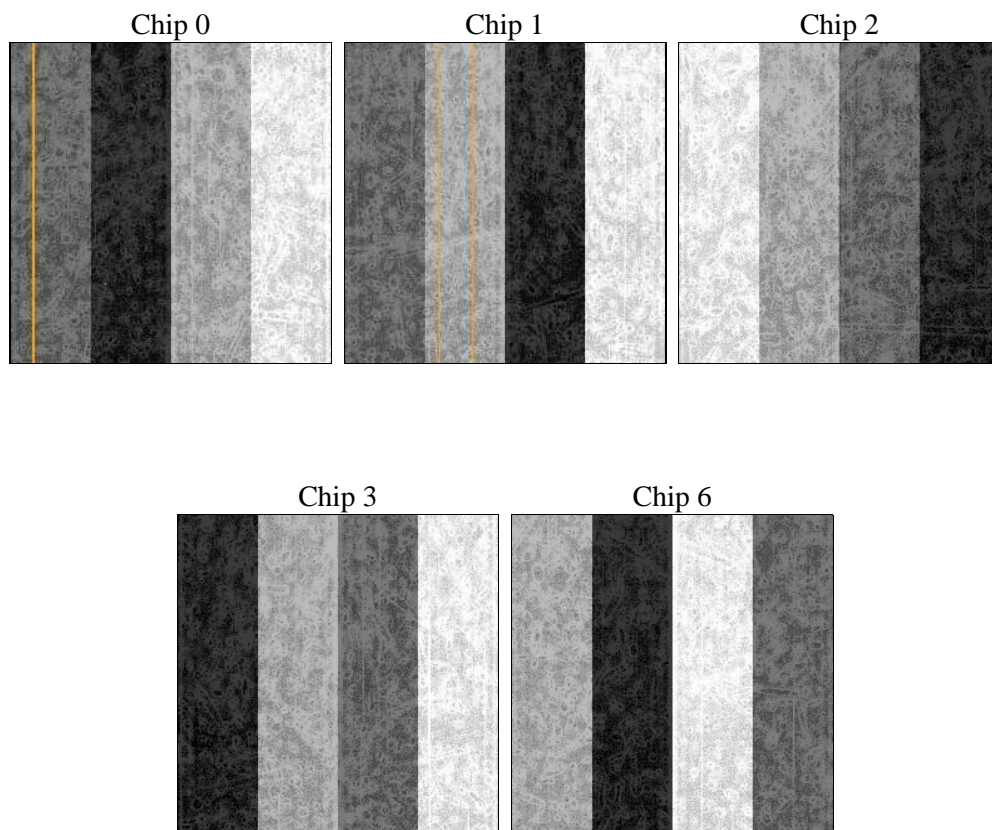
2 OBI

2.1 OBI

2.1.1 Images



2.1.2 Bias



2.1.3 Parameters

obi_num	0	Obi number	sched_exp_time	10000.000000	[s] Scheduled observation exposure time
ascdsver	8.4.4	Processing system revision	ontime	9770.4431125522	Sum of GTIs [s]
caldsver	4.4.9	 	ontime0	9773.4609828591	Sum of GTIs [s]
date	2012-05-25T05:25:00	Date and time of file creation	ontime1	9770.3610920906	Sum of GTIs [s]
revision	2	Processing version of data	ontime2	9773.5430628657	Sum of GTIs [s]
			ontime3	9770.4431125522	Sum of GTIs [s]
			ontime6	9767.1379621625	Sum of GTIs [s]
			l1events	399487	Number of level 1 events

2.1.4 Events

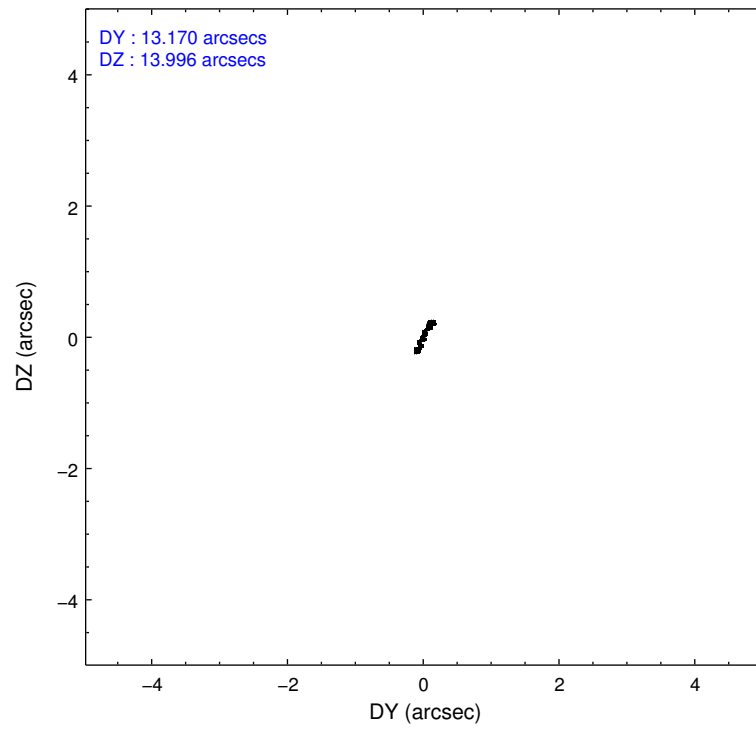
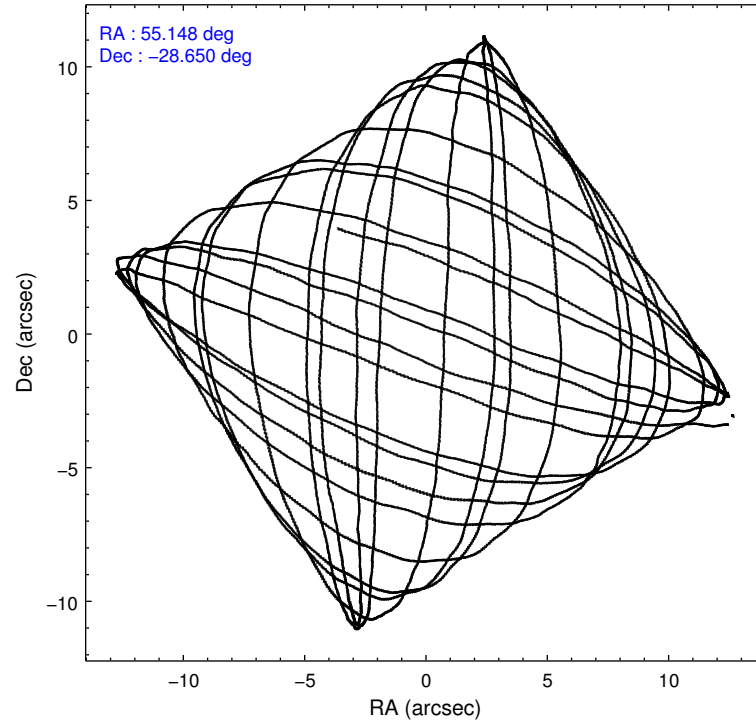
	ccd 0	ccd 1	ccd 2	ccd 3	ccd 6
level 1 events	76166	74399	87043	79849	82030
rejected events	67832	64839	78682	70822	73598
rejected %	89%	87%	90%	88%	89%

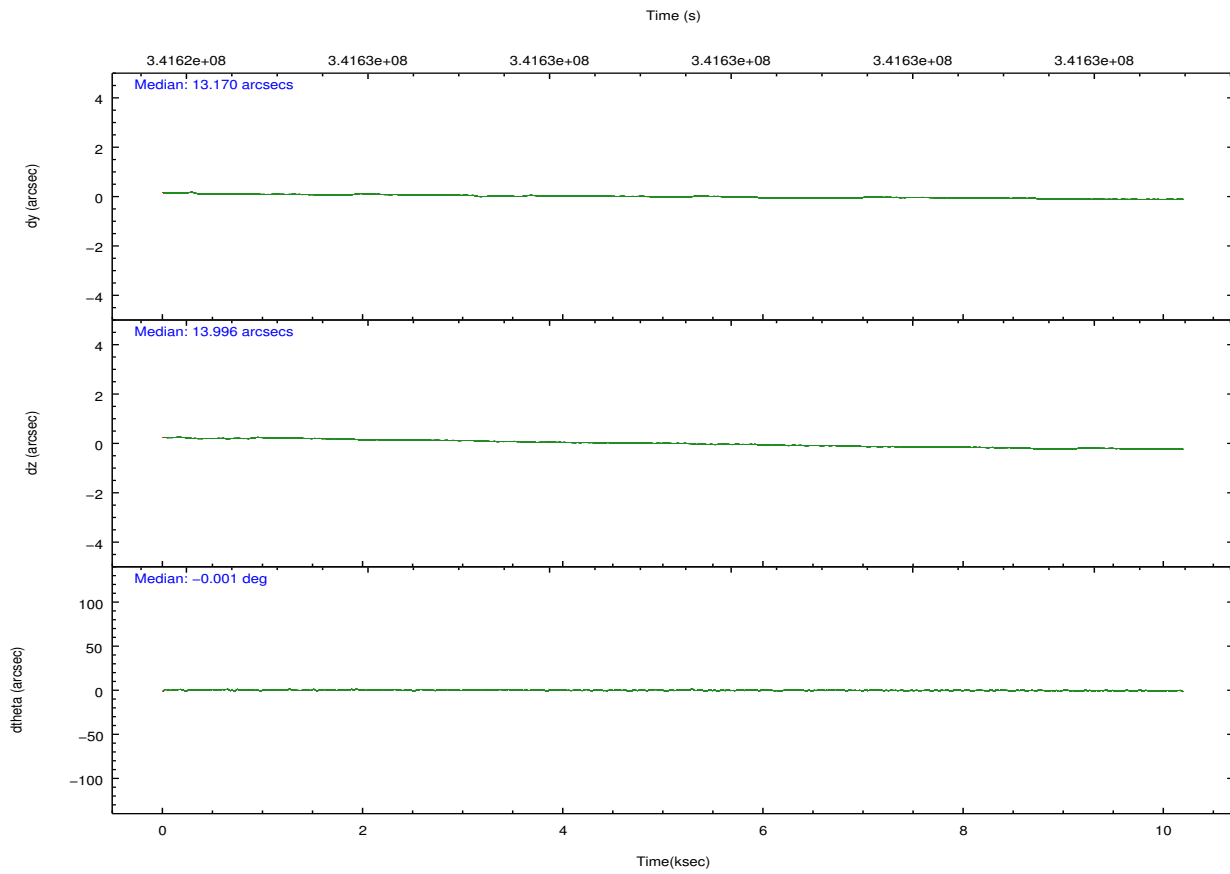
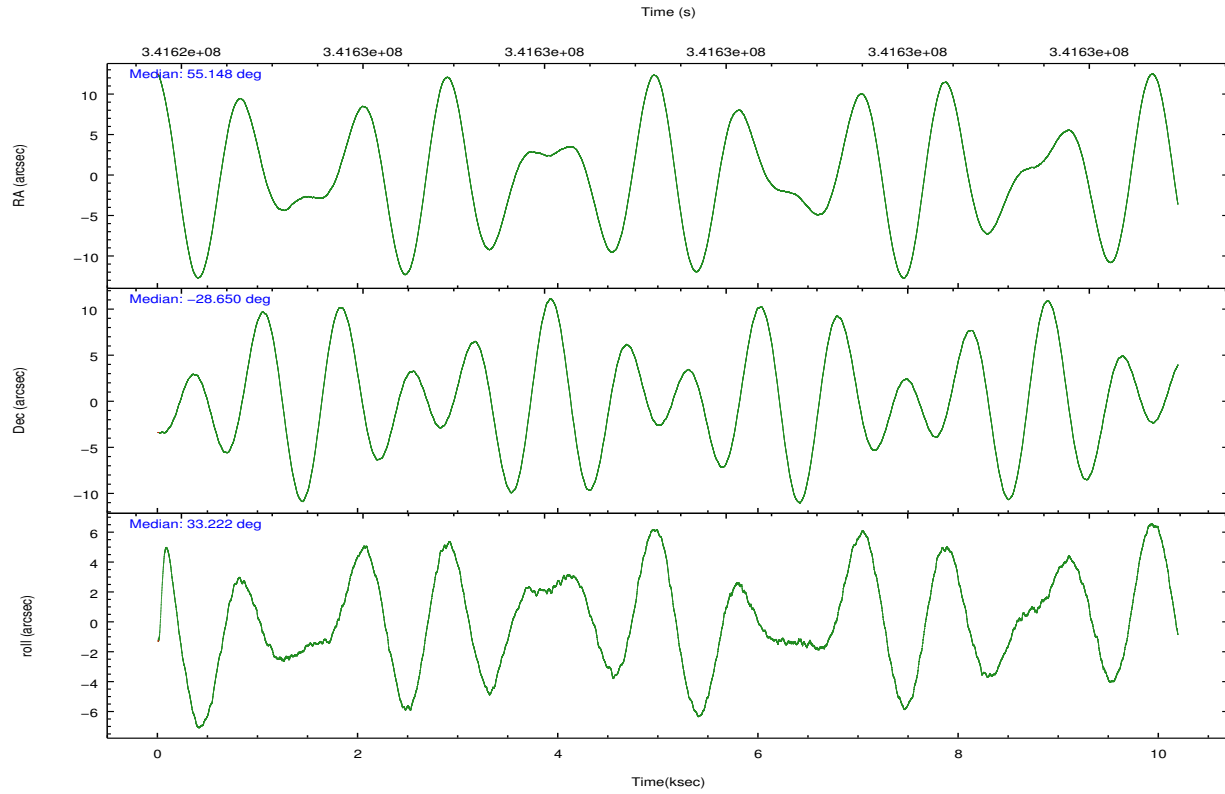
	ccd 0	ccd 1	ccd 2	ccd 3	ccd 6
grade 0 events	2971	3703	3092	3872	2977
	3%	4%	3%	4%	3%
grade 1 events	42	41	52	65	35
	0%	0%	0%	0%	0%
grade 2 events	1906	2046	2048	1815	1865
	2%	2%	2%	2%	2%
grade 3 events	1004	1028	842	874	856
	1%	1%	0%	1%	1%
grade 4 events	867	932	863	928	869
	1%	1%	0%	1%	1%
grade 5 events	2963	3276	2733	3322	3308
	3%	4%	3%	4%	4%
grade 6 events	1589	1853	1520	1543	1868
	2%	2%	1%	1%	2%
grade 7 events	64824	61520	75893	67430	70252
	85%	82%	87%	84%	85%

2.2 Compared Parameters

Parameter	Planned	Actual	Parameter	Planned	Actual
Instrument	ACIS	ACIS	Obspar format version number	7	7
Detector	ACIS-01236	ACIS-01236	Obspar file type	PREDICTED	ACTUAL
Grating	NONE	NONE	Obspar update status	NONE	UPDATED
Data mode	VFAINT	VFAINT	CCD I0 on	Y	Y
Observation mode	POINTING	POINTING	CCD I1 on	Y	Y
[deg] Pointing RA	55.133859	55.14788435226275	CCD I2 on	Y	Y
[deg] Pointing Dec	-28.674235	-28.64964077867983	CCD I3 on	Y	Y
[deg] Pointing Roll	33.009838	33.22526013739517	CCD S0 on	N	N
[mm] SIM focus pos	-0.782348	-0.7809083437167272	CCD S1 on	N	N
[mm] SIM defocus	0	0.001439871863259334	CCD S2 on	O1	Y
[mm] SIM translation stage pos	-228.592463	-228.6015472178352	CCD S3 on	N	N
[mm] SIM translation stage offset	-5	-4.990905785094469	CCD S4 on	N	N
[s] Observation start time (MET)	341624453.184000	341623606.26199	CCD S5 on	N	N
Observation start date	2008-10-28T23:39:48	2008-10-28T23:26:46	Number of optional ACIS chips dropped	0	0
[s] Observation end time (MET)	341634453.184000	341635442.96257	On-chip summing requested	N	N
Observation end date	2008-10-29T02:26:28	2008-10-29T02:44:02	Subarray requested	NONE	NONE
Read mode	TIMED	TIMED	Alternating exposures requested	N	N
			[s] Primary exposure time	0.000000	3.1

2.3 Aspect



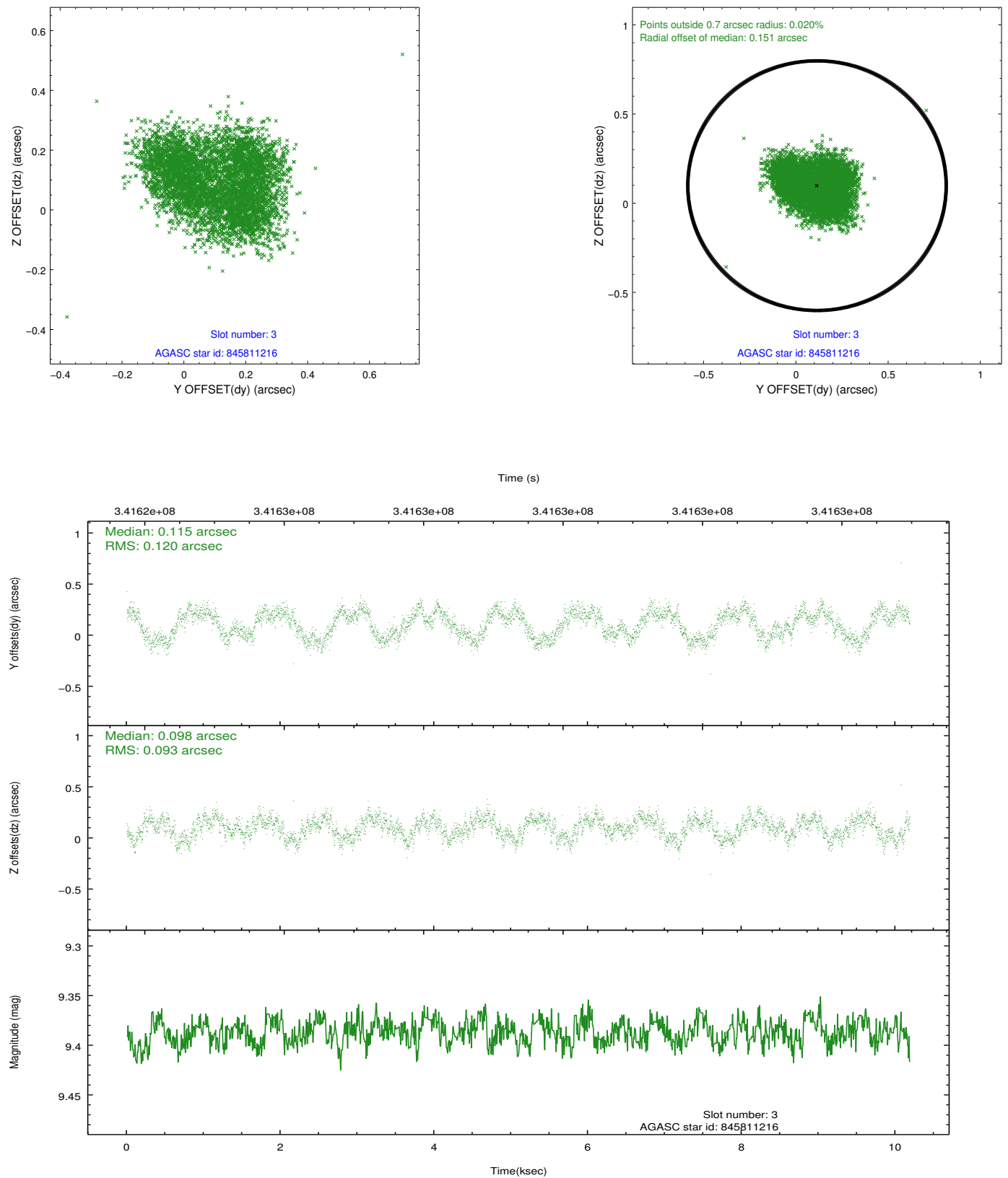


Slot Statistics

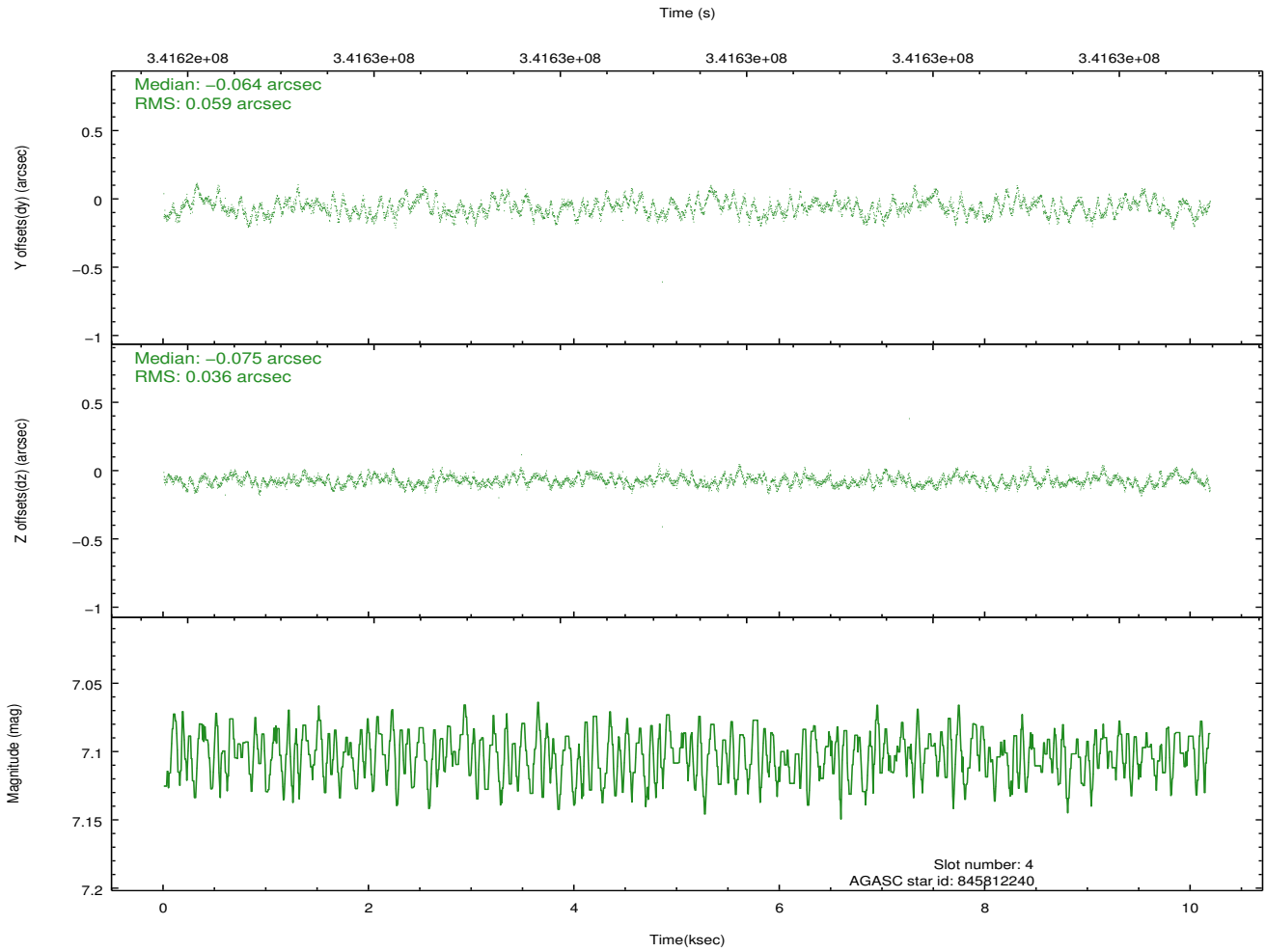
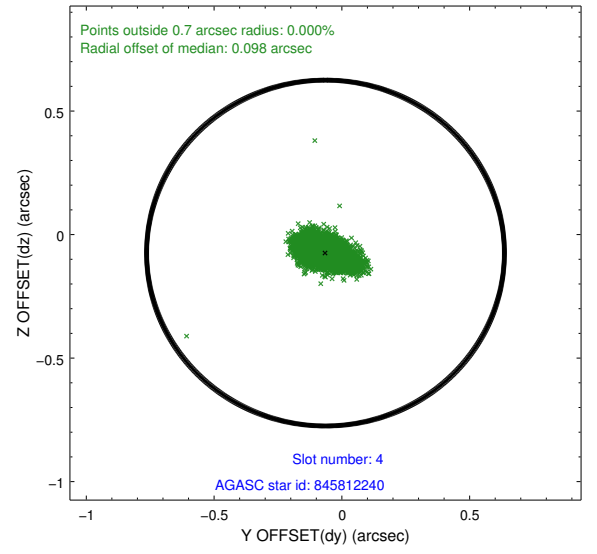
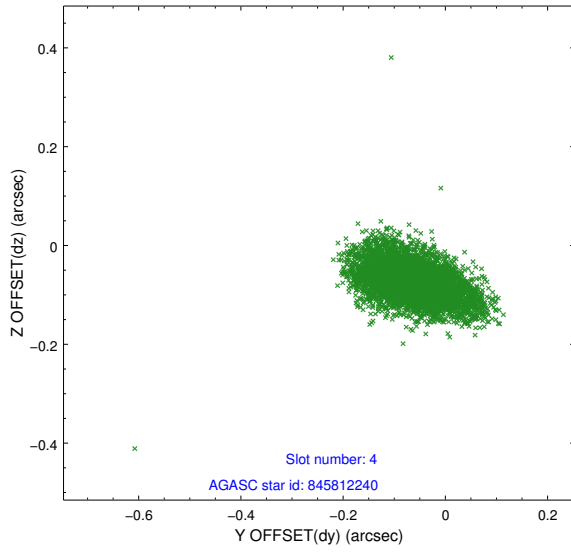
slot	status	id	mag	n_pts	med_dy	med_dz	dr1	dr2	ra	dec	mean_y	mean_z
0	FID	ACIS-I-1	6.99	2485	0.107	-0.056	0.006	0.010	0.000000	0.000000	926.34	-940.05
1	FID	ACIS-I-5	6.97	2486	-0.235	0.103	0.007	0.012	0.000000	0.000000	-1821.80	957.33
2	FID	ACIS-I-6	6.98	2486	0.038	0.024	0.007	0.011	0.000000	0.000000	391.28	1602.32
3	GUIDE	845811216	9.39	4964	0.115	0.098	0.166	0.240	55.454338	-28.787773	625.00	-894.42
4	GUIDE	845812240	7.10	4965	-0.064	-0.075	0.072	0.122	54.972671	-28.511492	-108.94	768.03
5	GUIDE	845812904	8.91	4965	0.007	0.005	0.091	0.141	55.417167	-28.833728	436.34	-968.71
6	GUIDE	845812912	8.03	4969	-0.020	0.023	0.081	0.122	54.885871	-29.102274	-1493.91	-868.10
7	GUIDE	845940392	7.56	4969	-0.028	-0.053	0.069	0.115	55.991231	-28.628645	2356.08	-1346.38

2.4 Star Slots

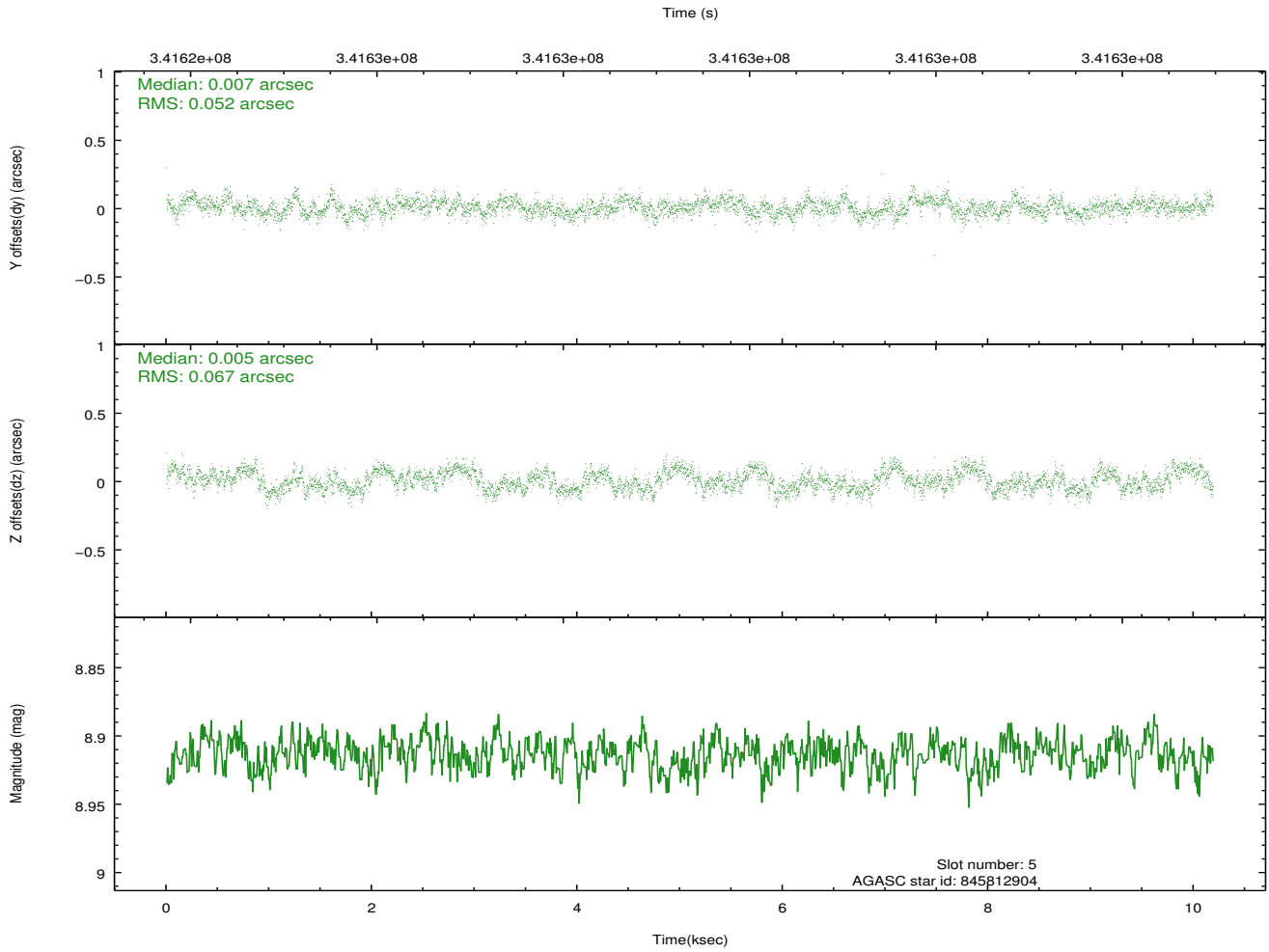
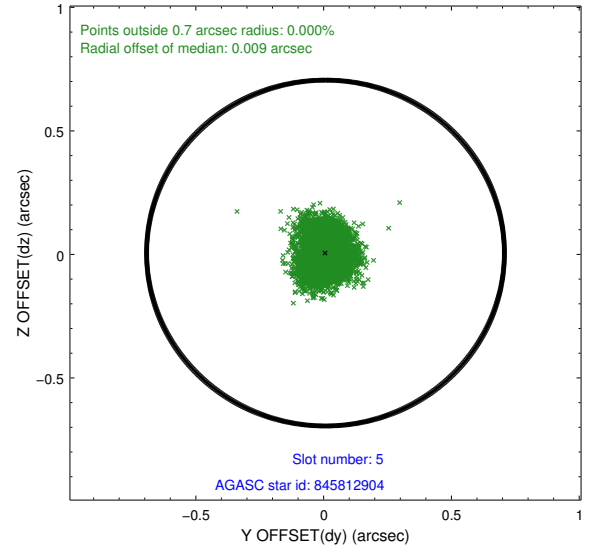
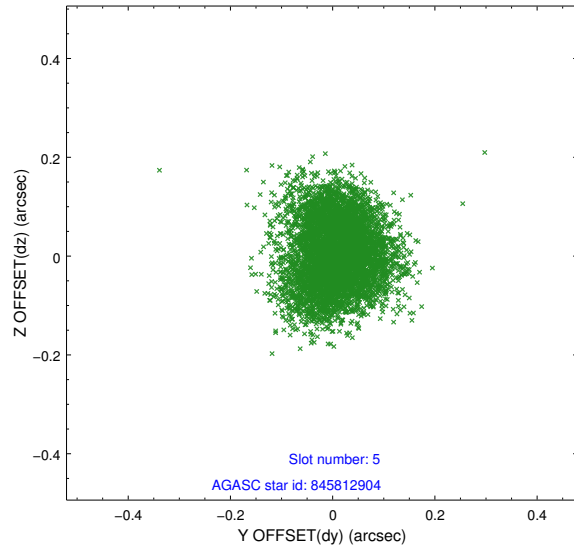
2.4.1 Slot 3



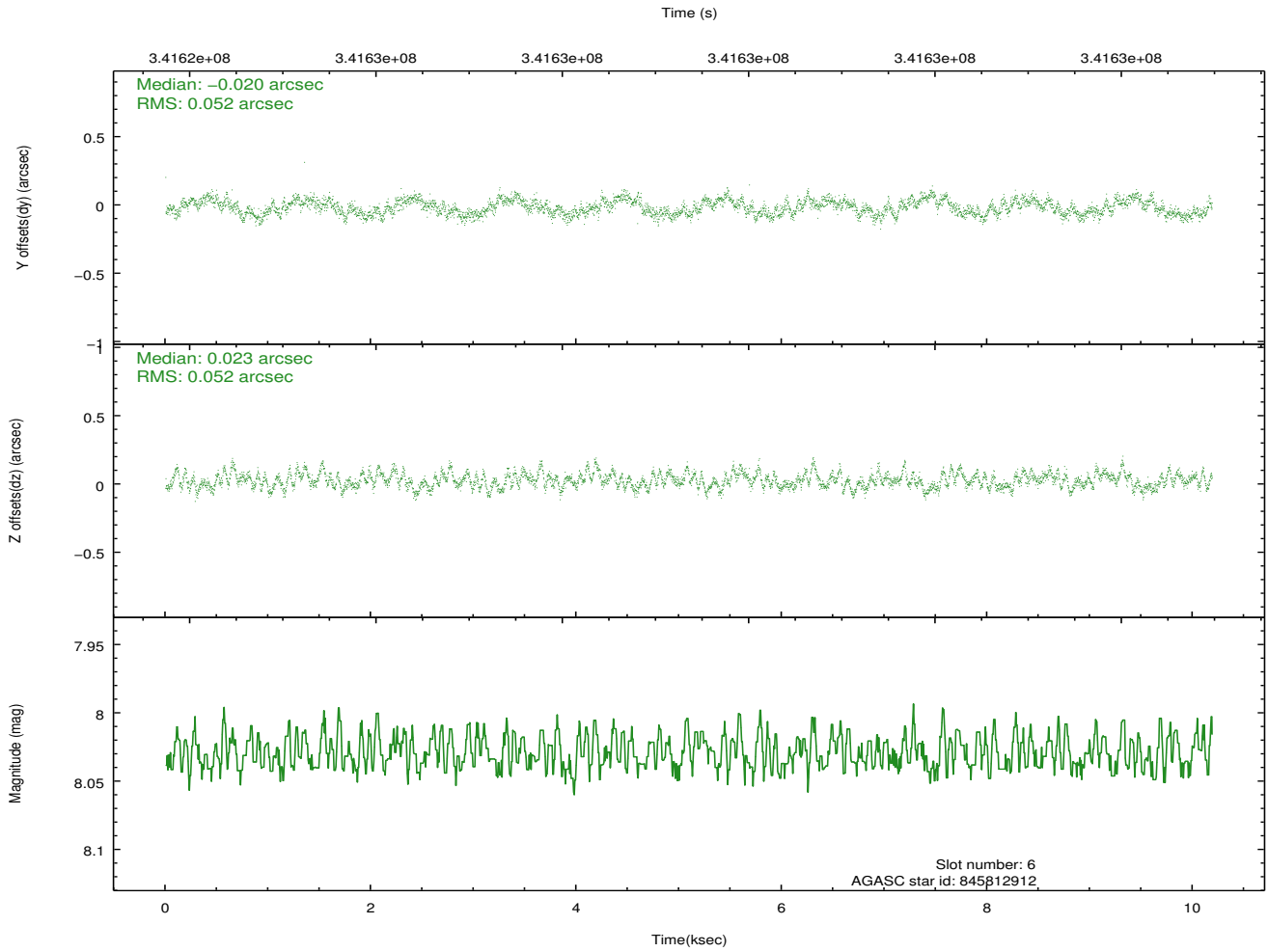
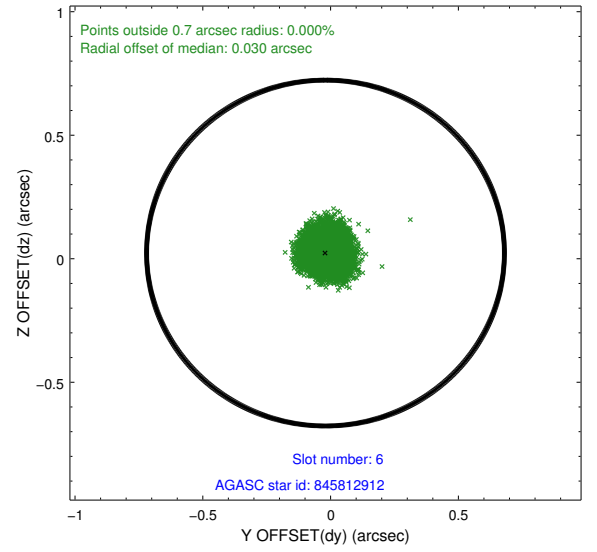
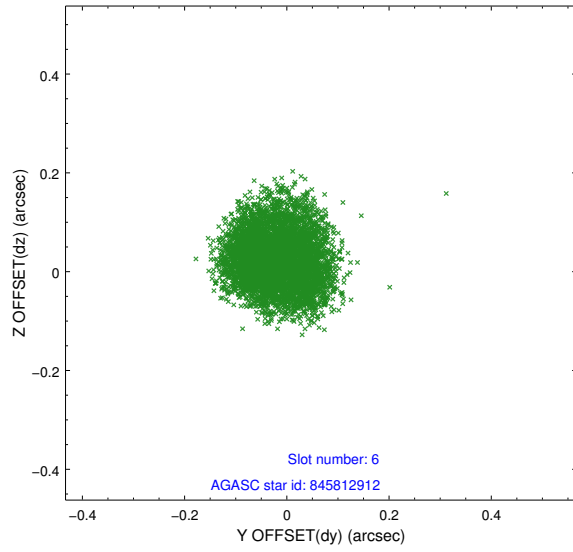
2.4.2 Slot 4



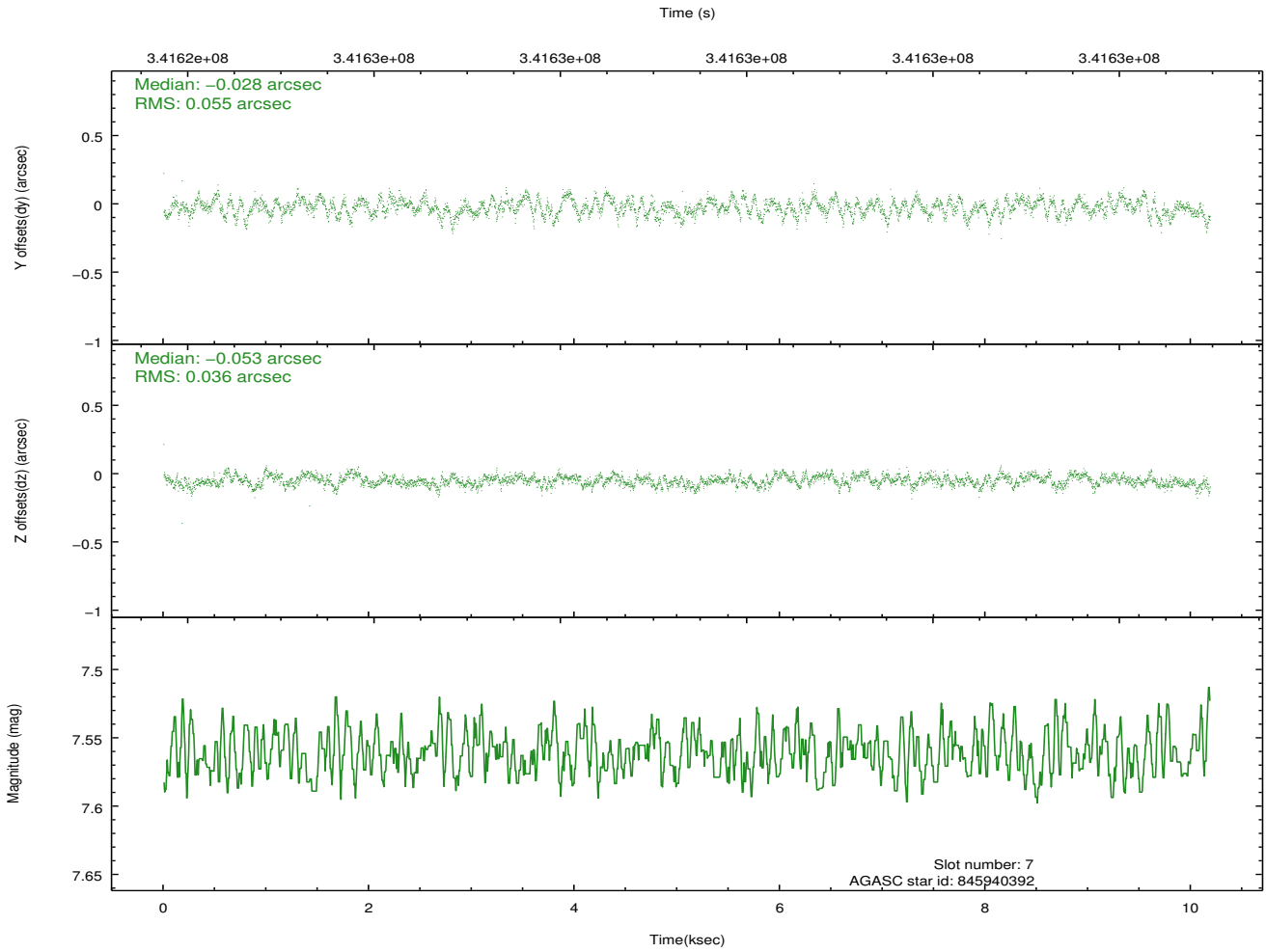
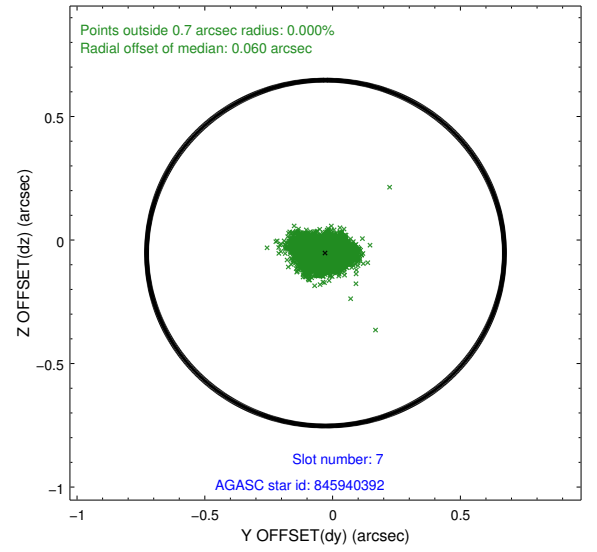
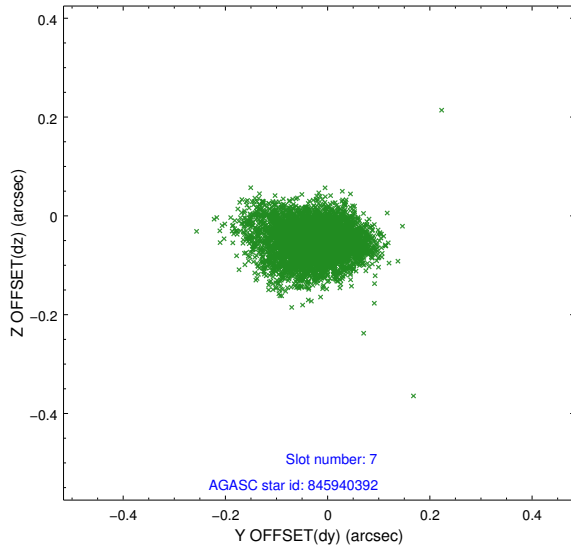
2.4.3 Slot 5



2.4.4 Slot 6

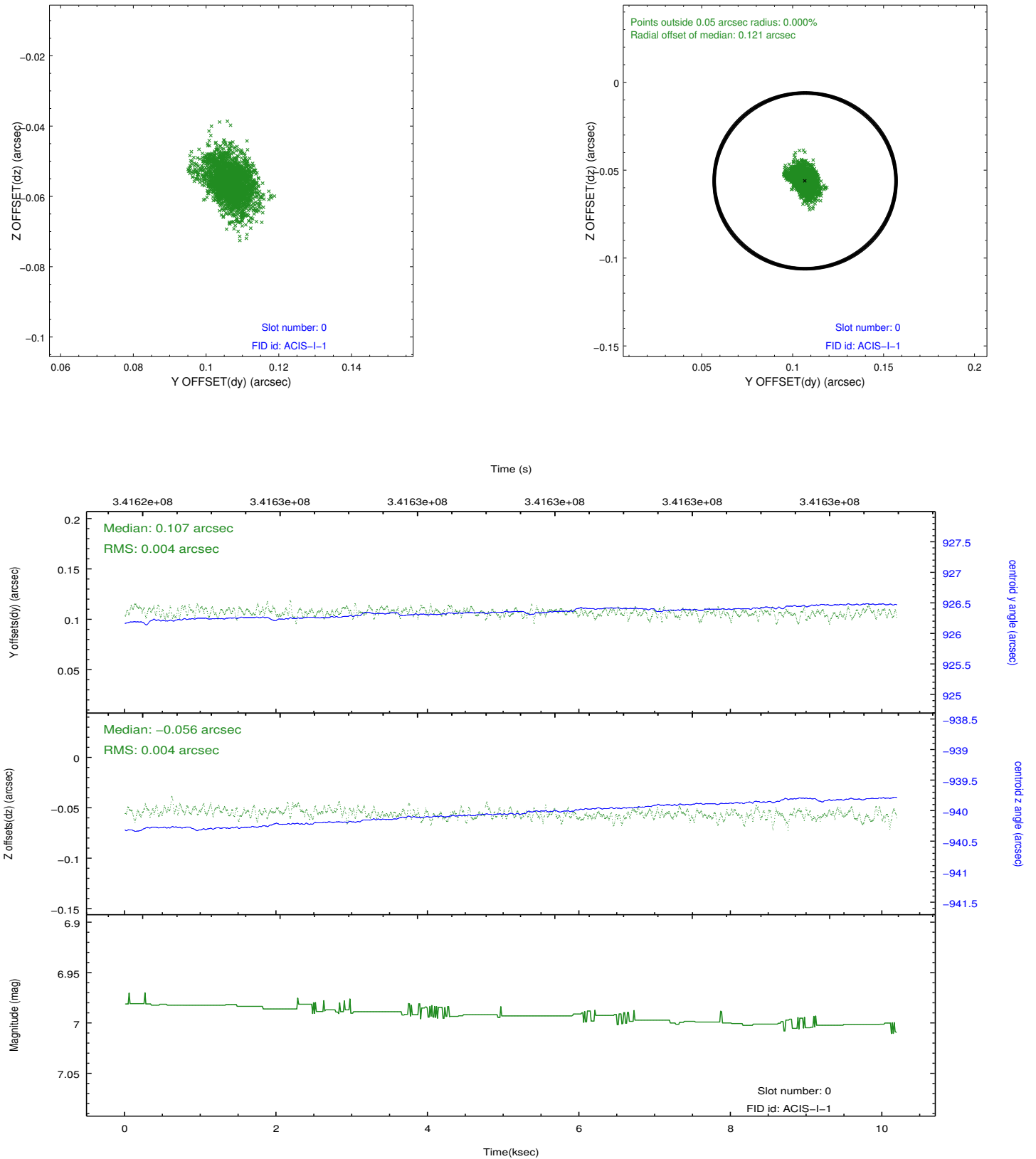


2.4.5 Slot 7

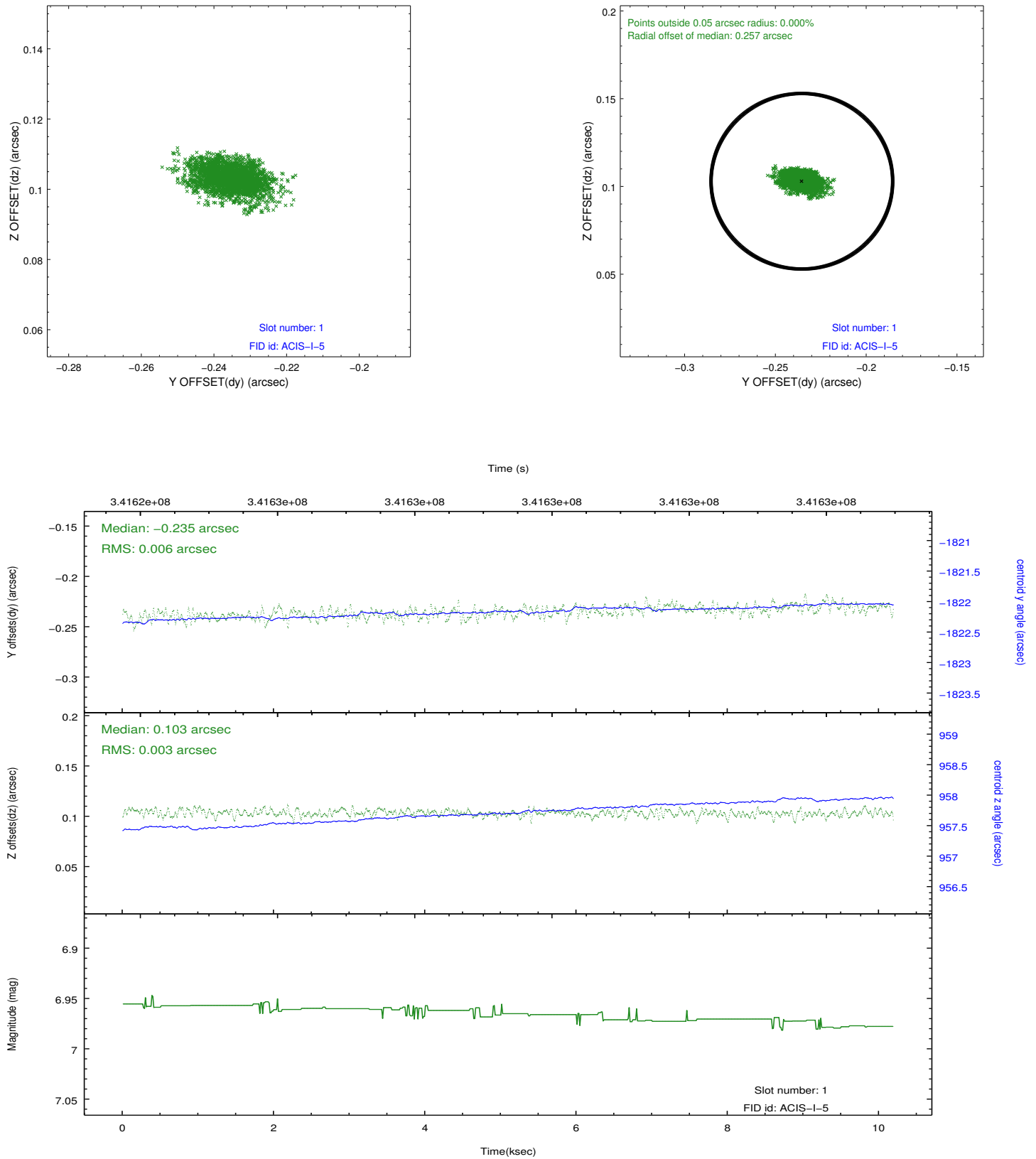


2.5 FID Slots

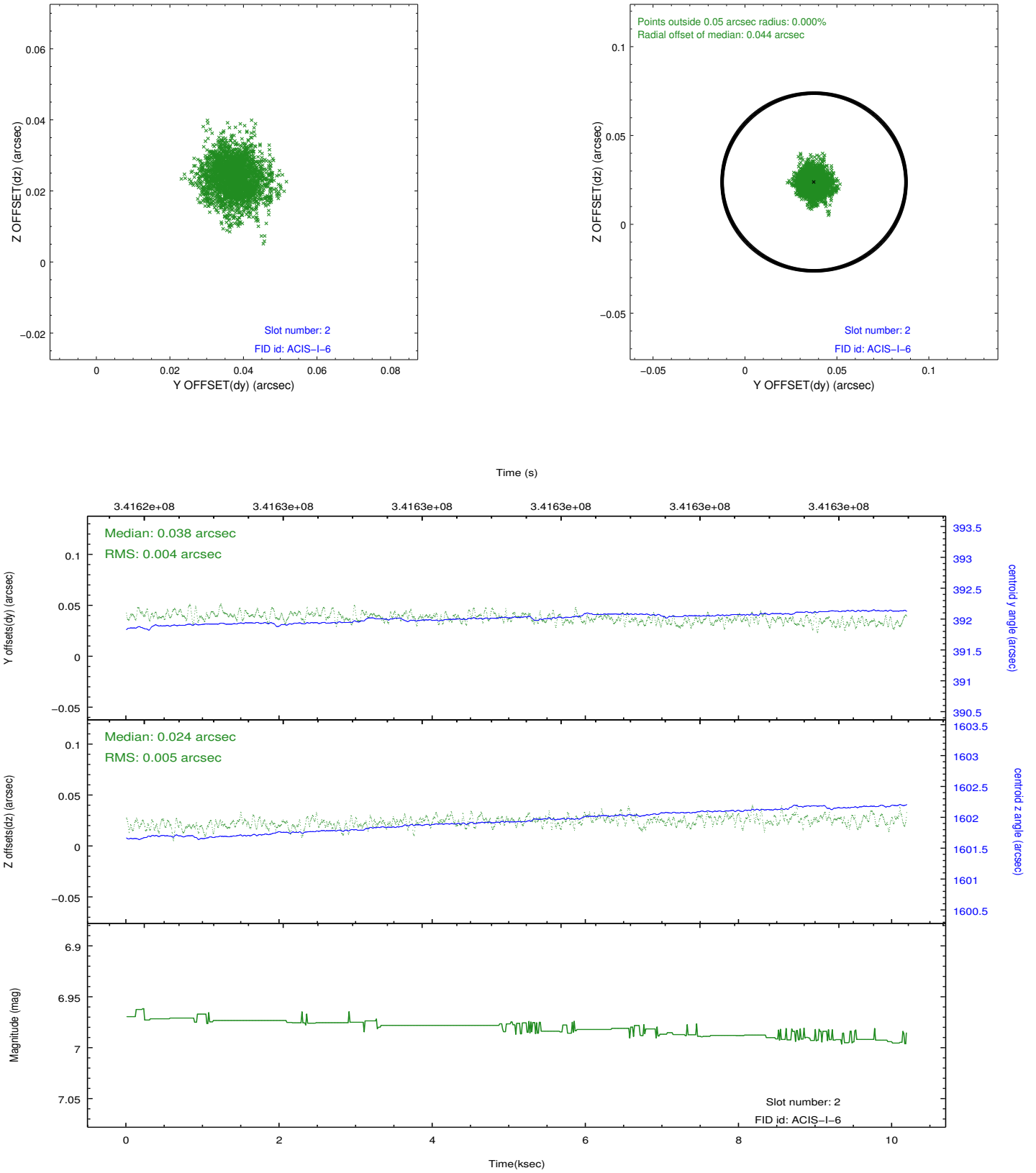
2.5.1 Slot 0



2.5.2 Slot 1



2.5.3 Slot 2



A Summary

A.1 Status

V&V Scientist	Joy Nichols
V&V Date (YYYY-MM-DD)	2012.06.01
V&V Edition	1
V&V Disposition and Status	OK
V&V Charge Time	9.77115908

A.2 Comments