

V&V Reference Report

L2 ASCDS Version : 7.6.10

Observation 935 - L2 Version 001
Chandra X-Ray Center

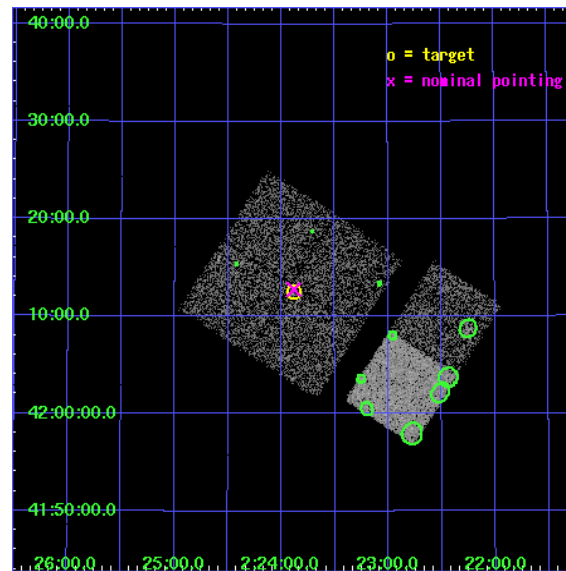
L2 Processing Date : Jun 6 2007

Contents

1	Front	2
2	OBI	3
2.1	OBI	3
2.1.1	Images	3
2.1.2	Bias	3
2.1.3	Parameters	4
2.1.4	Events	4
2.2	Compared Parameters	5
2.3	Aspect	6
2.4	Star Slots	9
2.4.1	Slot 3	9
2.4.2	Slot 4	10
2.4.3	Slot 5	11
2.4.4	Slot 6	12
2.4.5	Slot 7	13
2.5	FID Slots	14
2.5.1	Slot 0	14
2.5.2	Slot 1	15
2.5.3	Slot 2	16
3	Point Sources	17
A	Summary	18
A.1	Status	18
A.2	Comments	18

1 Front

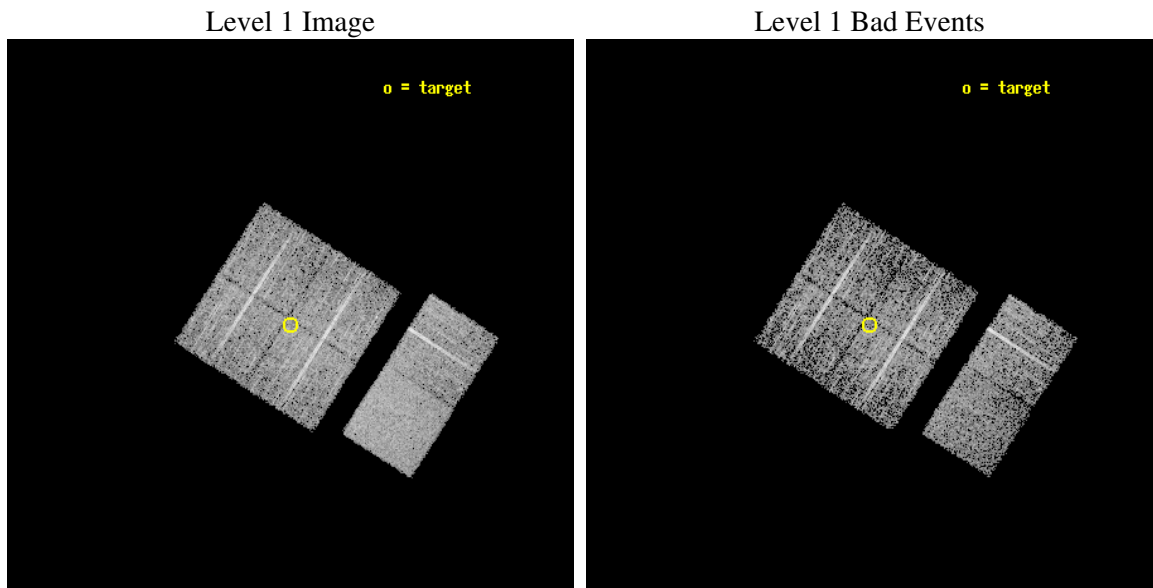
seq_num	900007
obs_id	935
title	AXAF OBSERVATION OF FAINT HARD X-RAY SOURCES DISCOVERED WITH ASCA
observer	DR. TADAYUKI TAKAHASHI
object	AX J0223+4212
dtcycle	0
cycle	P
ra_targ	35.972083
dec_targ	42.208306
ra_nom	35.970913158444
dec_nom	42.213039160194
roll_nom	122.74466393708
revision	2
ontime	4454.4000041485
livetime	4397.9957091783
ontime0	4451.1590139866
ontime1	4454.4000041485
ontime2	4454.4000041485
ontime3	4454.4000041485
ontime6	4454.4000041485
ontime7	4454.4000041485
l2events	27229



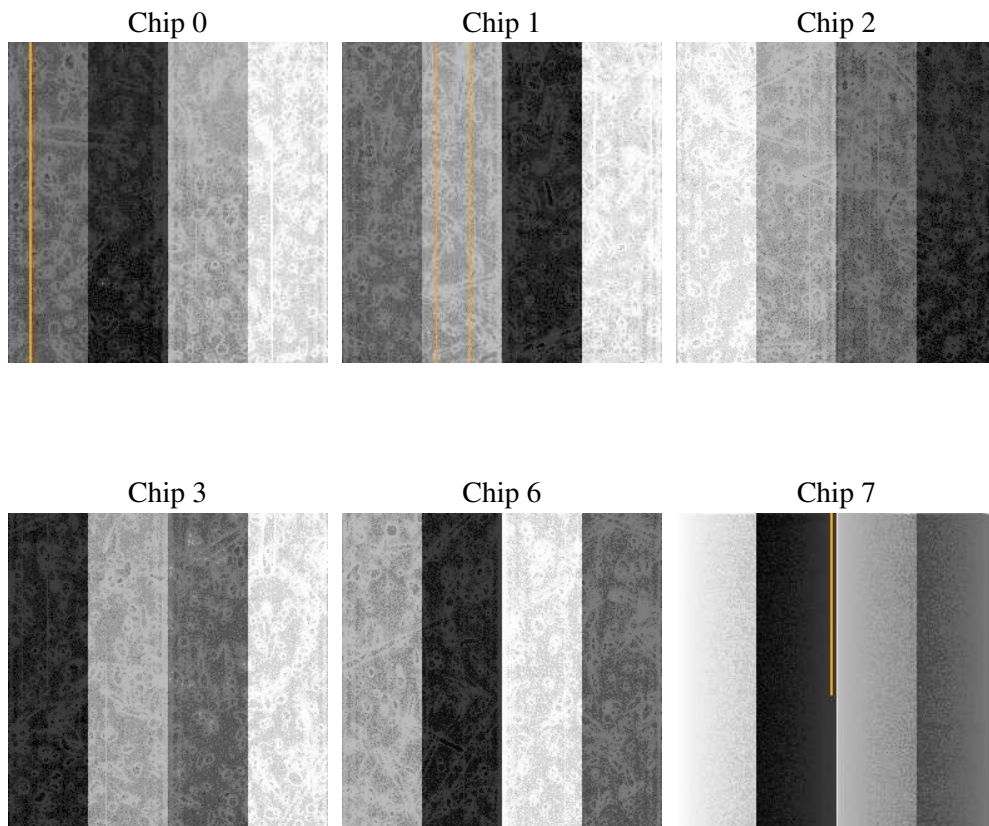
2 OBI

2.1 OBI

2.1.1 Images



2.1.2 Bias



2.1.3 Parameters

obi_num	0
ascdsver	7.6.10
caldsver	3.4.0
date	2007-06-06T17:50:16
revision	2

sched_exp_time	4500.000000
ontime	4454.4000041485
ontime0	4451.1590139866
ontime1	4454.4000041485
ontime2	4454.4000041485
ontime3	4454.4000041485
ontime6	4454.4000041485
ontime7	4454.4000041485
l1events	164057

2.1.4 Events

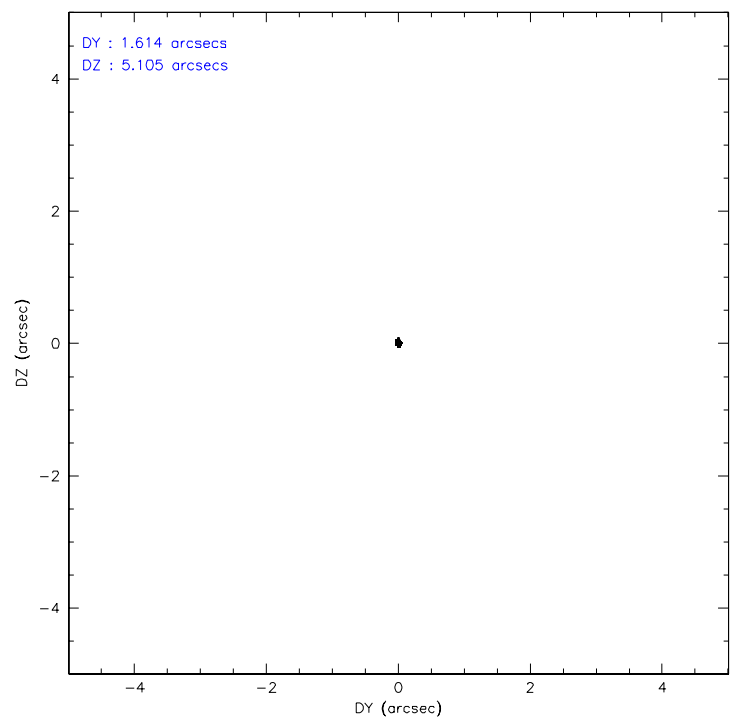
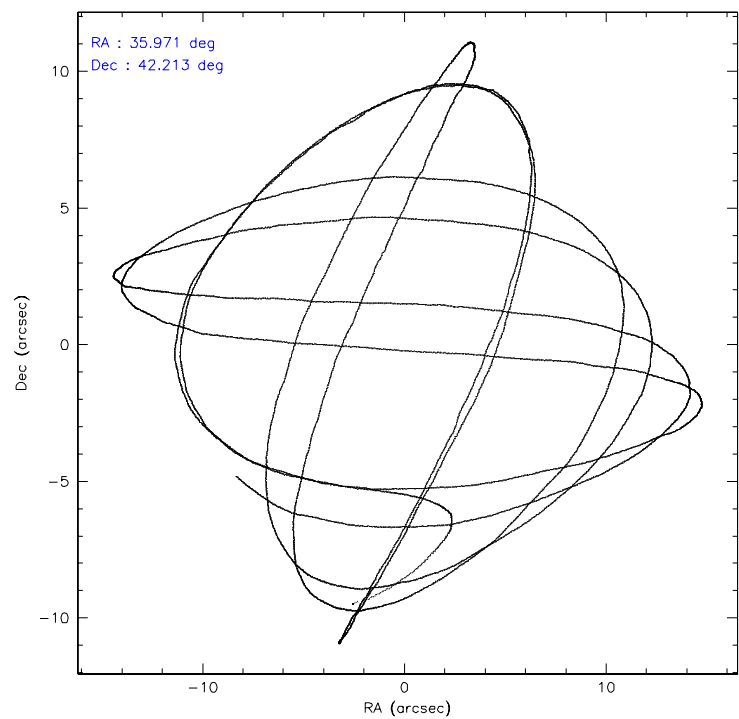
	ccd 0	ccd 1	ccd 2	ccd 3	ccd 6	ccd 7
level 1 events	24135	25444	26927	27169	28069	32313
rejected events	20908	21963	23748	24010	24811	18689
rejected %	86%	86%	88%	88%	88%	57%

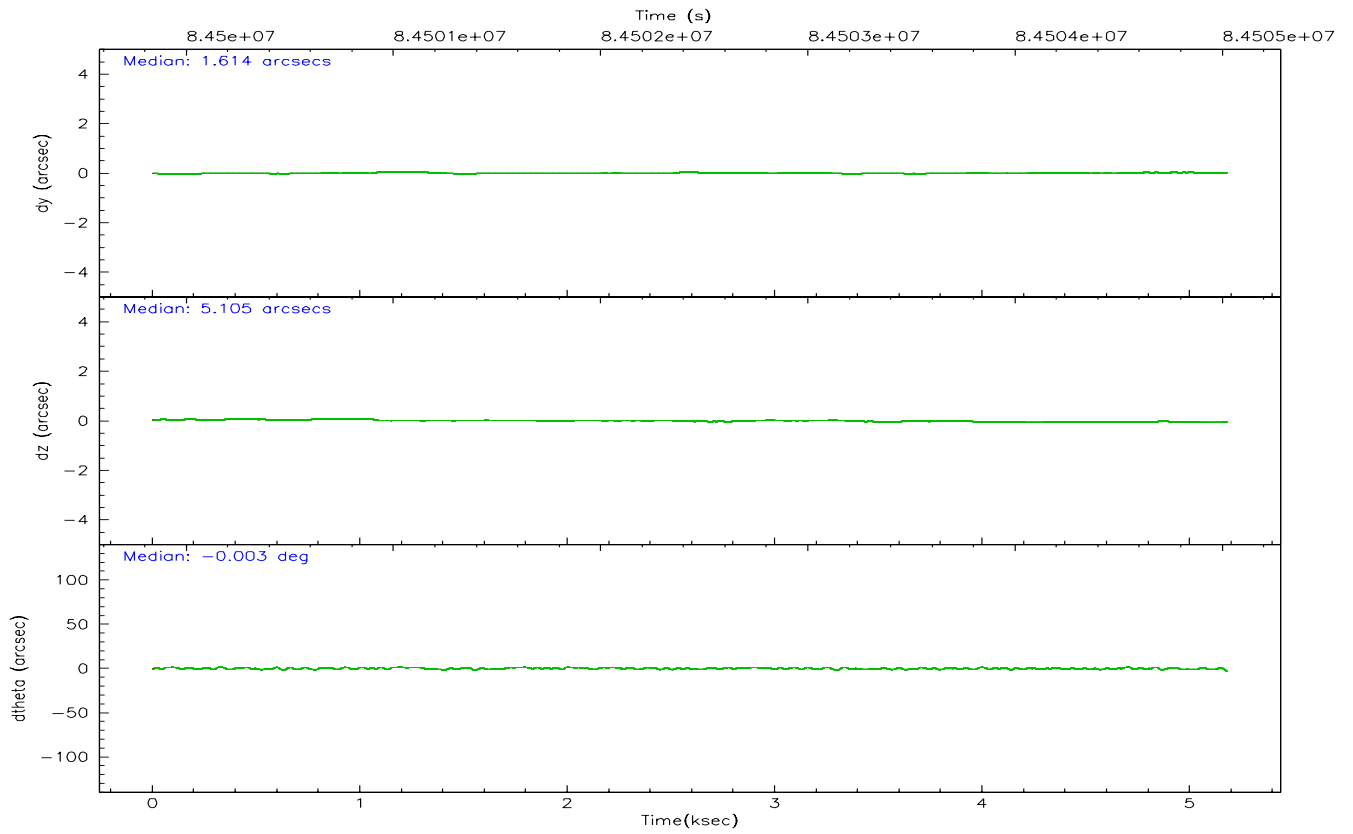
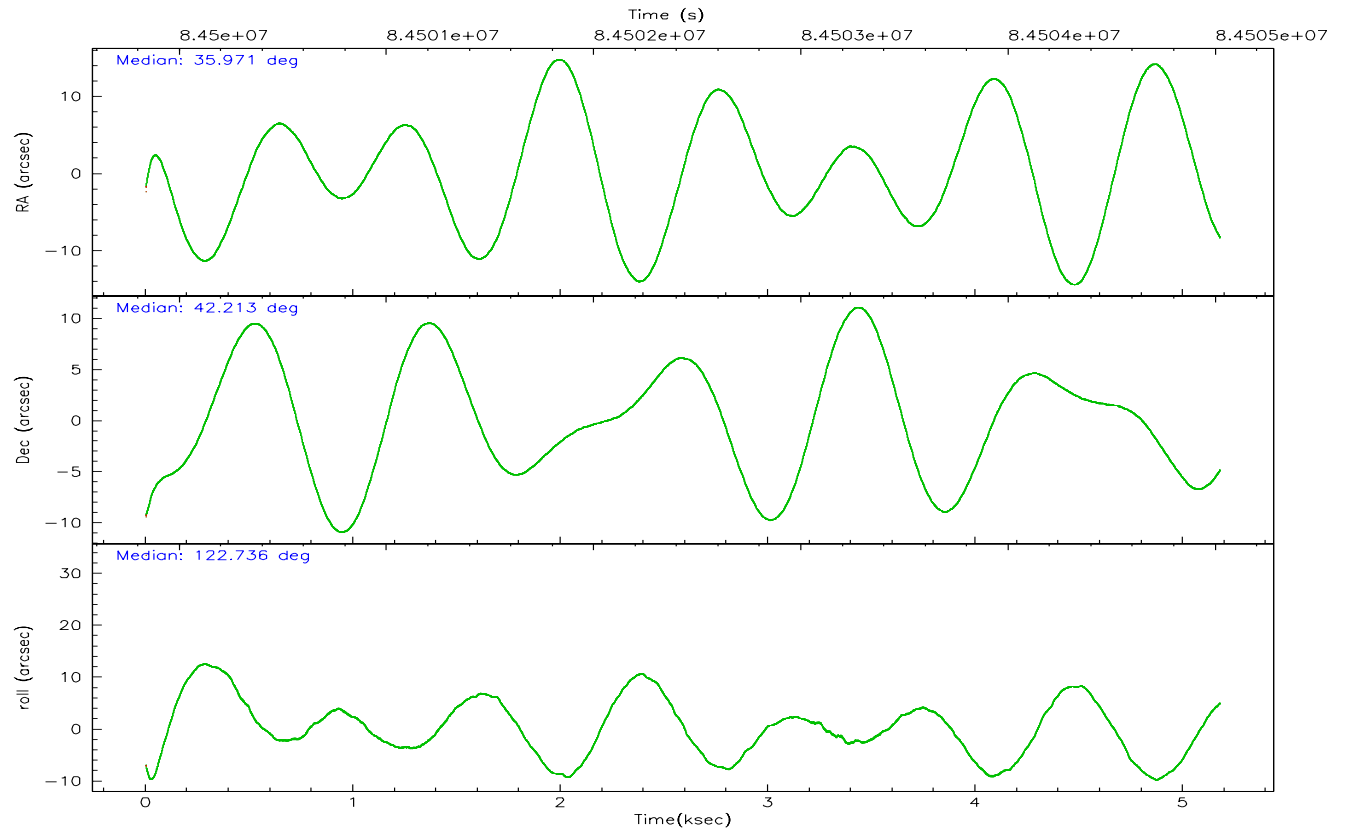
	ccd 0	ccd 1	ccd 2	ccd 3	ccd 6	ccd 7
grade 0 events	1391	1513	1371	1430	1372	1222
	5%	5%	5%	5%	4%	3%
grade 1 events	17	11	14	17	10	24
	0%	0%	0%	0%	0%	0%
grade 2 events	702	698	699	627	668	2720
	2%	2%	2%	2%	2%	8%
grade 3 events	322	312	277	274	293	1210
	1%	1%	1%	1%	1%	3%
grade 4 events	271	372	293	289	275	1252
	1%	1%	1%	1%	0%	3%
grade 5 events	918	962	845	958	1029	3164
	3%	3%	3%	3%	3%	9%
grade 6 events	545	588	540	542	652	7228
	2%	2%	2%	1%	2%	22%
grade 7 events	19969	20988	22888	23032	23770	15493
	82%	82%	85%	84%	84%	47%

2.2 Compared Parameters

Parameter	Planned	Actual	Parameter	Planned	Actual
Instrument	ACIS	ACIS	Obspar format version number	6	6
Detector	ACIS-012367	ACIS-012367	Obspar file type	PREDICTED	ACTUAL
Grating	NONE	NONE	Obspar update status	NONE	UPDATED
Data mode	VFAINT	VFAINT	Number of optional ACIS chips dropped	0	0
Observation mode	POINTING	POINTING	On-chip summing requested	N	N
Pointing RA	36.003946	35.9709131584442	Subarray requested	NONE	NONE
Pointing Dec	42.200425	42.21303916019395	Alternating exposures requested	N	N
Pointing Roll	122.513799	122.7446639370849	Primary exposure time	3.200000	3.2
SIM focus pos (mm)	-0.782348	-0.7809083437167272			
SIM defocus (mm)	0	0.001439871863259334			
SIM translation stage pos (mm)	-233.592463	-233.5874344608287			
SIM translation stage offset (mm)	0	-0.005018542100998502			
Observation start time	84500524.184000	84499321.37707999			
Observation start date	2000-09-05T00:21:00	2000-09-05T00:02:01			
Observation end time	84505024.184000	84505802.452323			
Observation end date	2000-09-05T01:36:00	2000-09-05T01:50:02			
Read mode	TIMED	TIMED			

2.3 Aspect



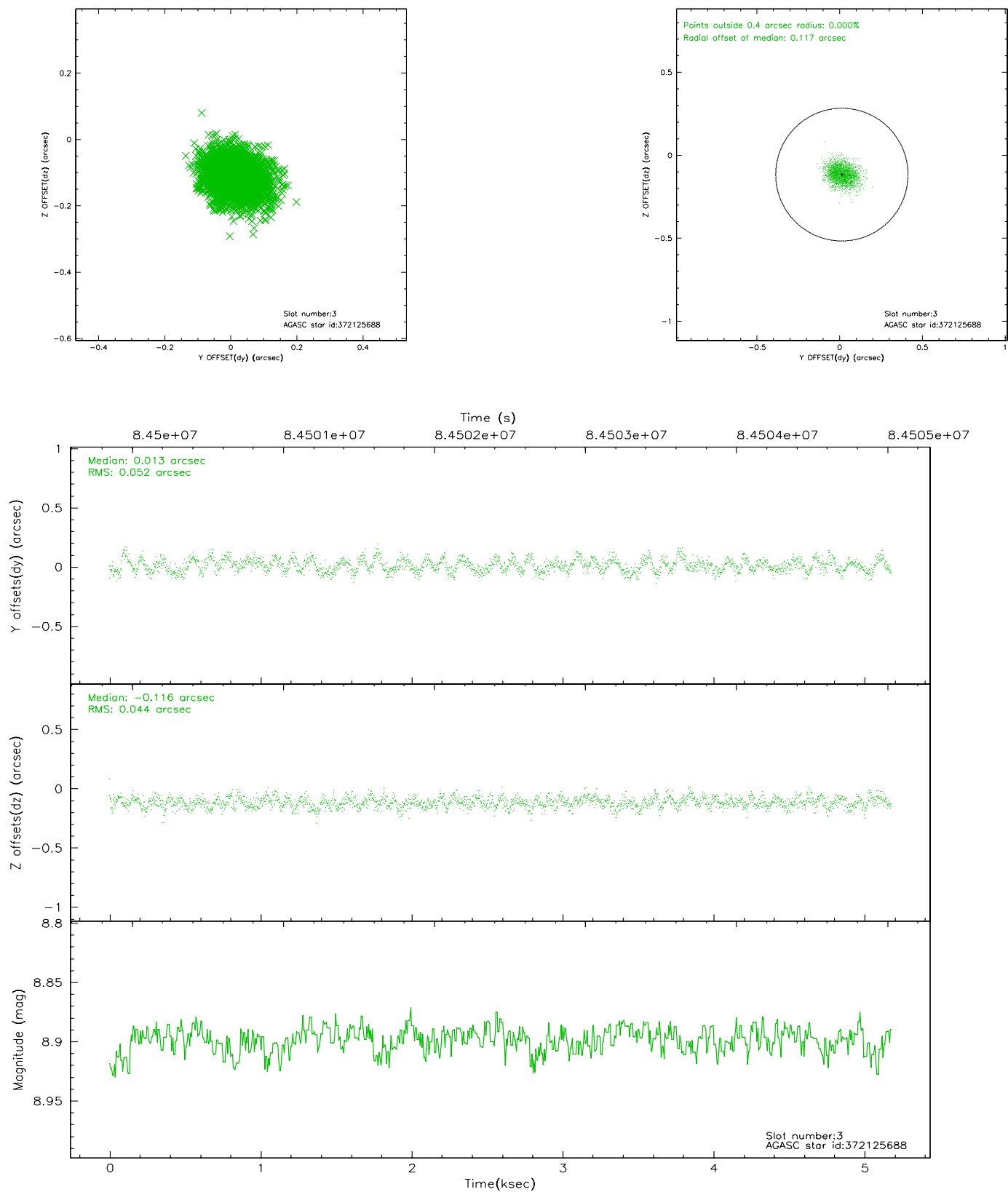


Slot Statistics

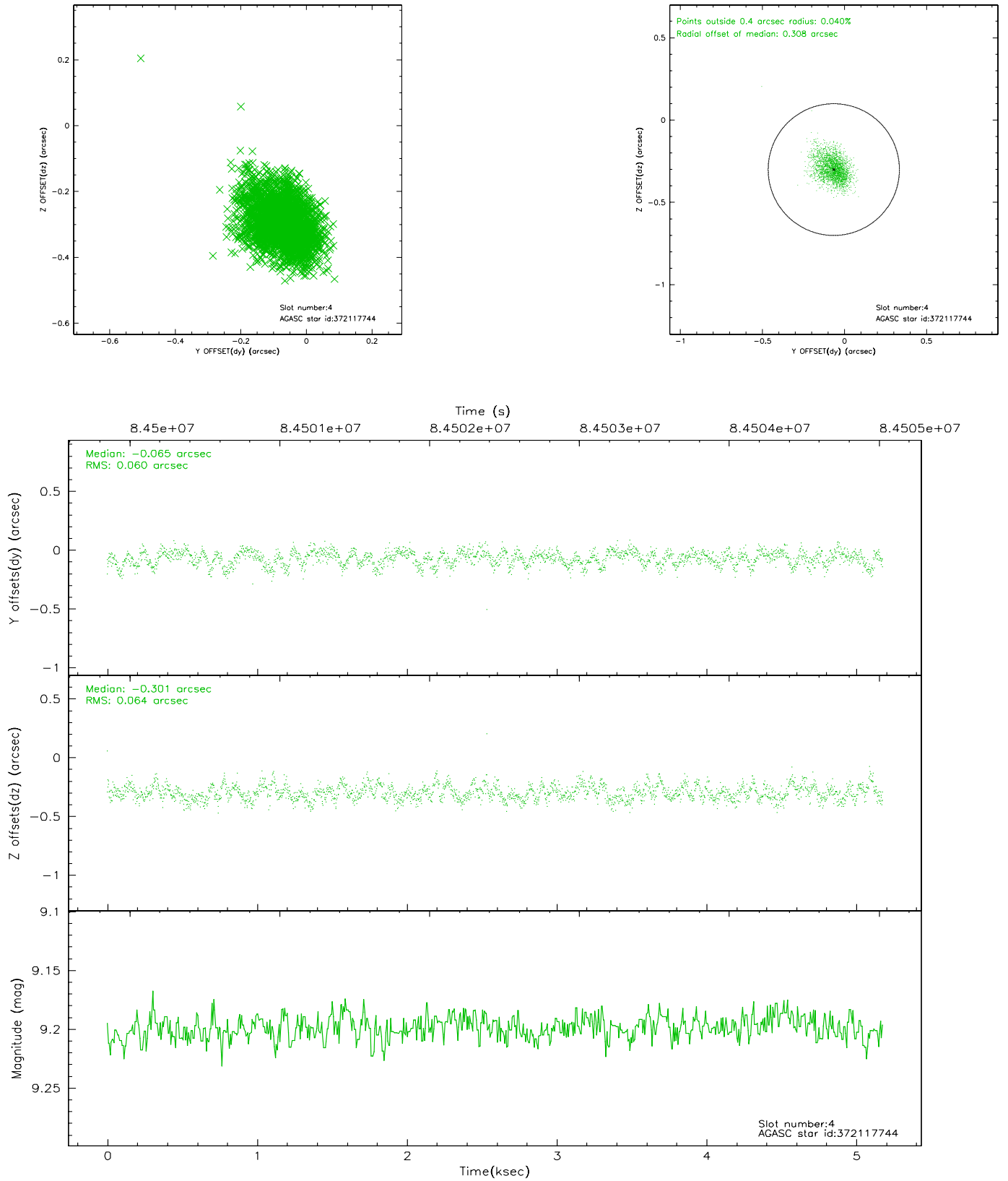
slot	status	id	mag	n_pts	med_dy	med_dz	dr1	dr2	ra	dec	mean_y	mean_z
0	FID	ACIS-I-2	7.15	1264	-0.031	0.012	0.006	0.010	0.000000	0.000000	-755.97	-834.81
1	FID	ACIS-I-4	7.19	1264	-0.057	0.020	0.007	0.012	0.000000	0.000000	2157.51	1070.82
2	FID	ACIS-I-6	7.27	1263	-0.012	0.033	0.009	0.015	0.000000	0.000000	405.60	1714.33
3	GUIDE	372125688	8.90	2527	0.013	-0.116	0.074	0.116	35.571507	41.884148	-335.56	1587.40
4	GUIDE	372117744	9.20	2526	-0.065	-0.301	0.091	0.150	35.244211	42.008785	517.03	2079.87
5	GUIDE	372125704	9.69	2527	-0.186	0.205	0.087	0.142	36.176193	42.780843	1517.38	-1506.14
6	GUIDE	372120640	9.67	2527	0.176	0.072	0.091	0.151	36.428641	41.991235	-1243.26	-555.90
7	GUIDE	372129888	9.54	2526	0.063	0.139	0.086	0.141	36.789935	42.174459	-1198.65	-1723.73

2.4 Star Slots

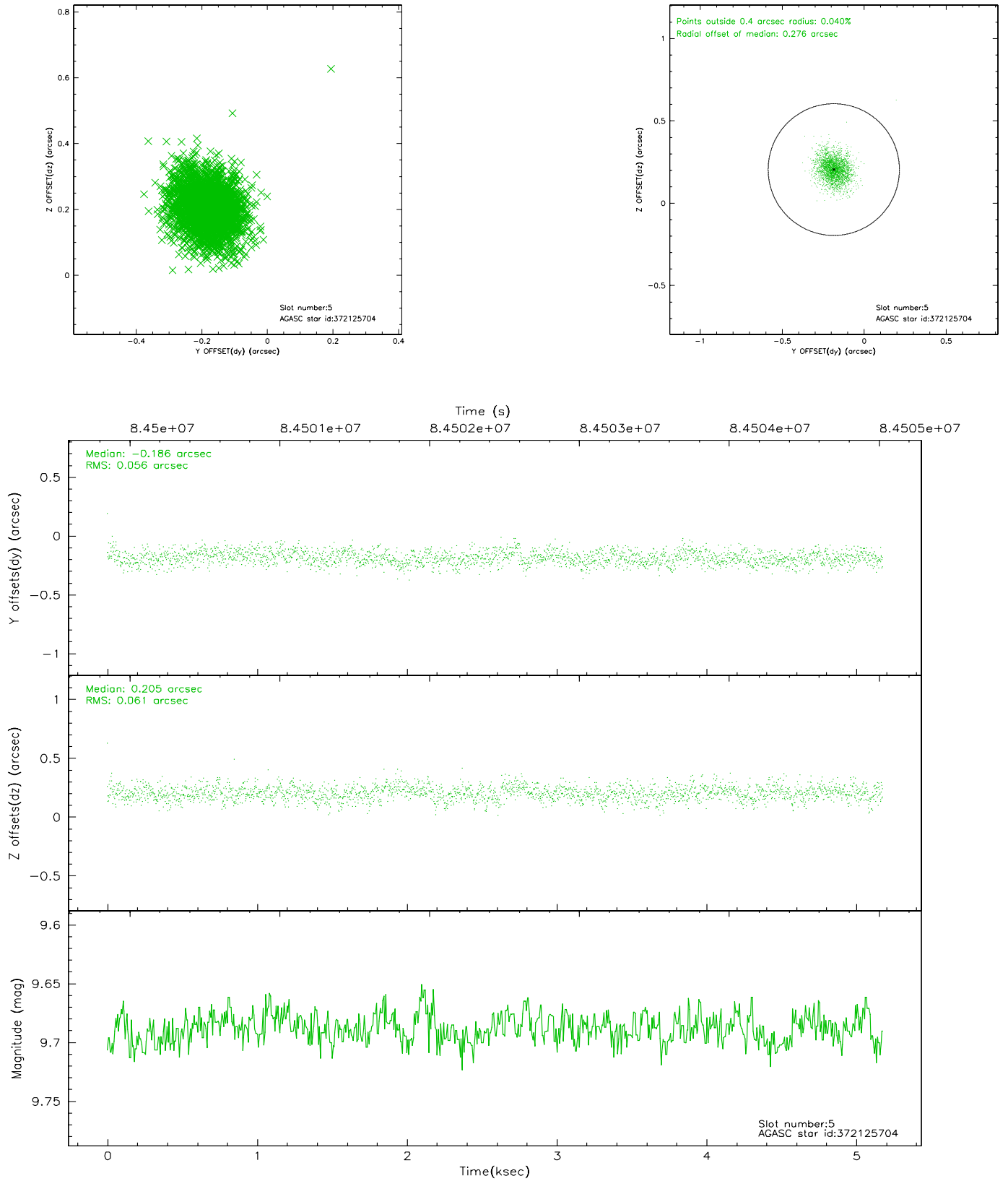
2.4.1 Slot 3



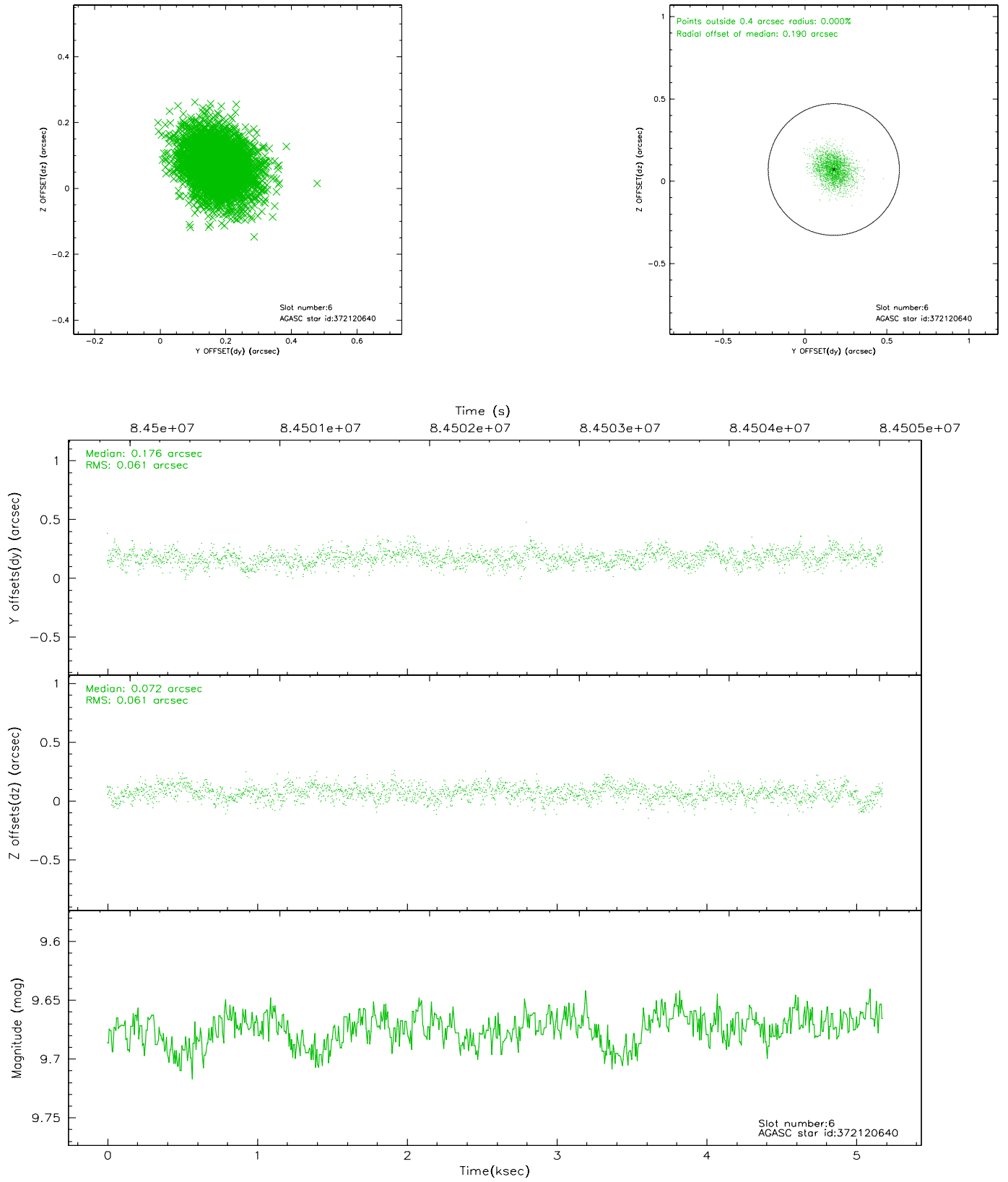
2.4.2 Slot 4



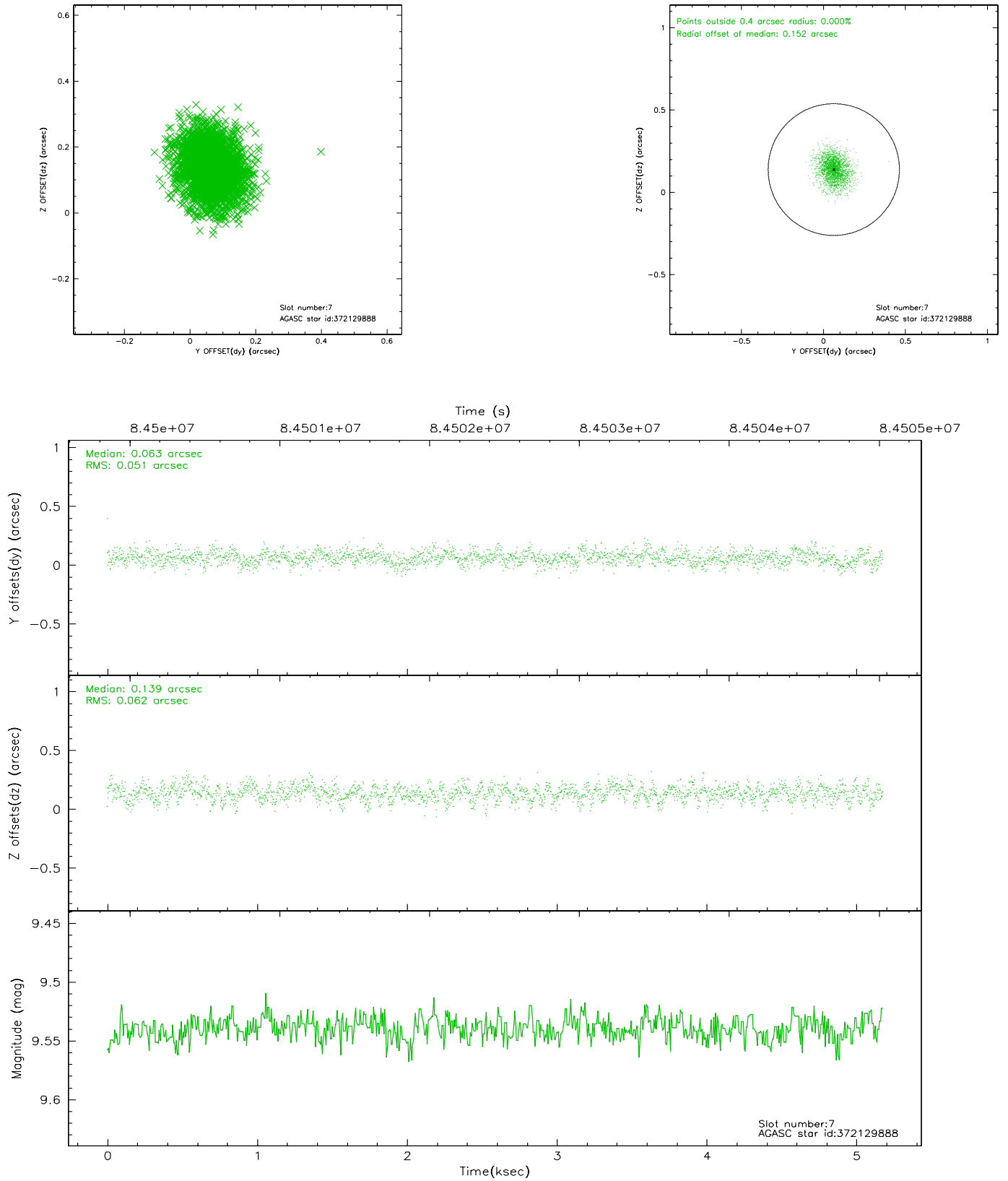
2.4.3 Slot 5



2.4.4 Slot 6

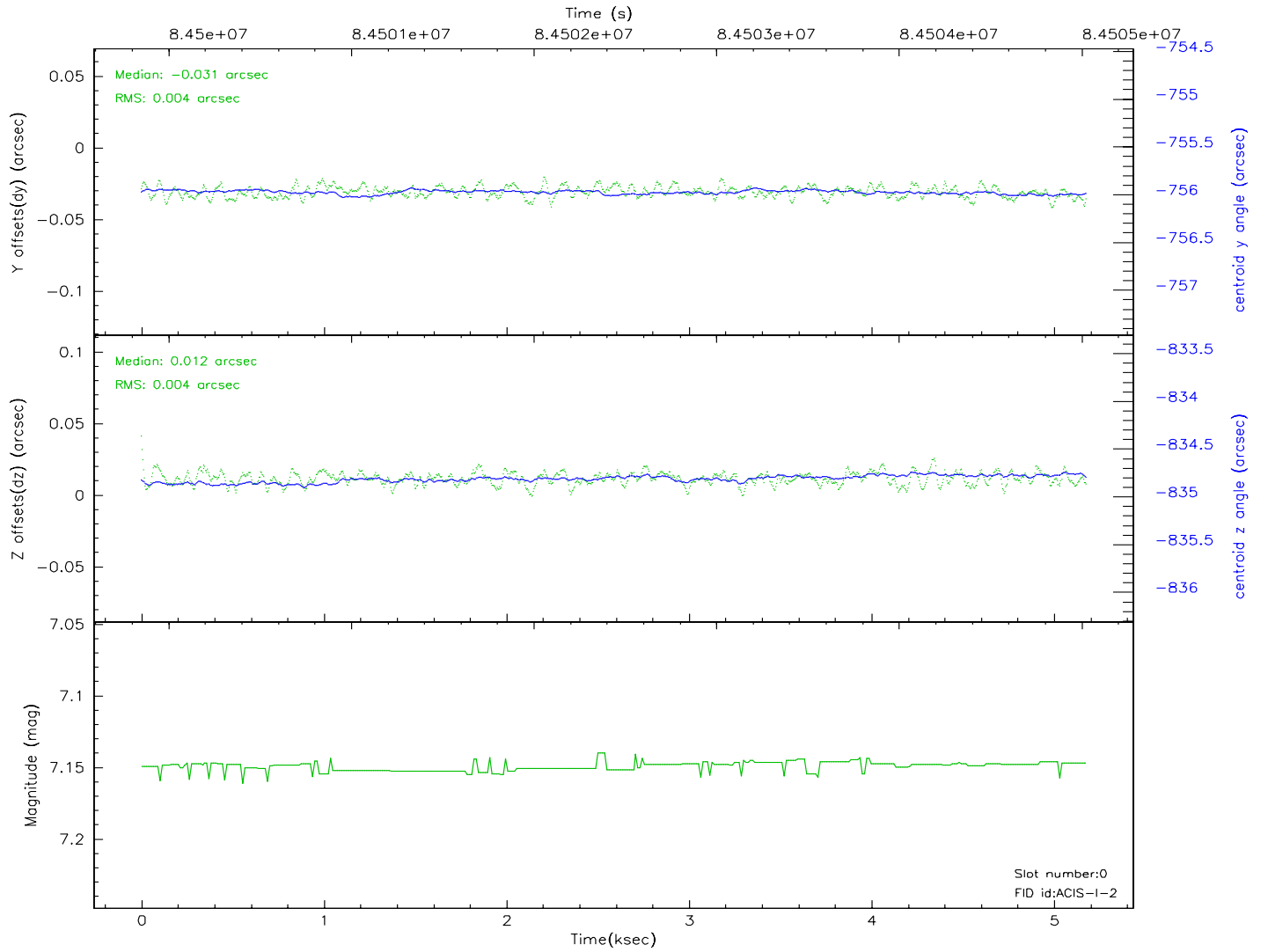
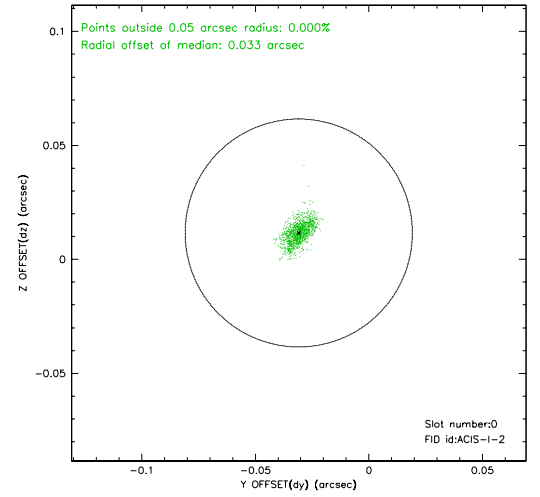
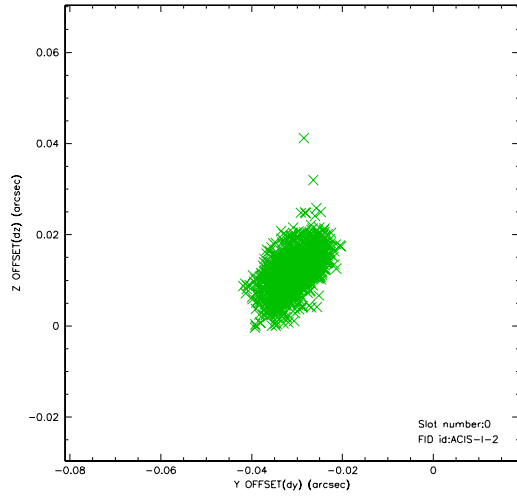


2.4.5 Slot 7

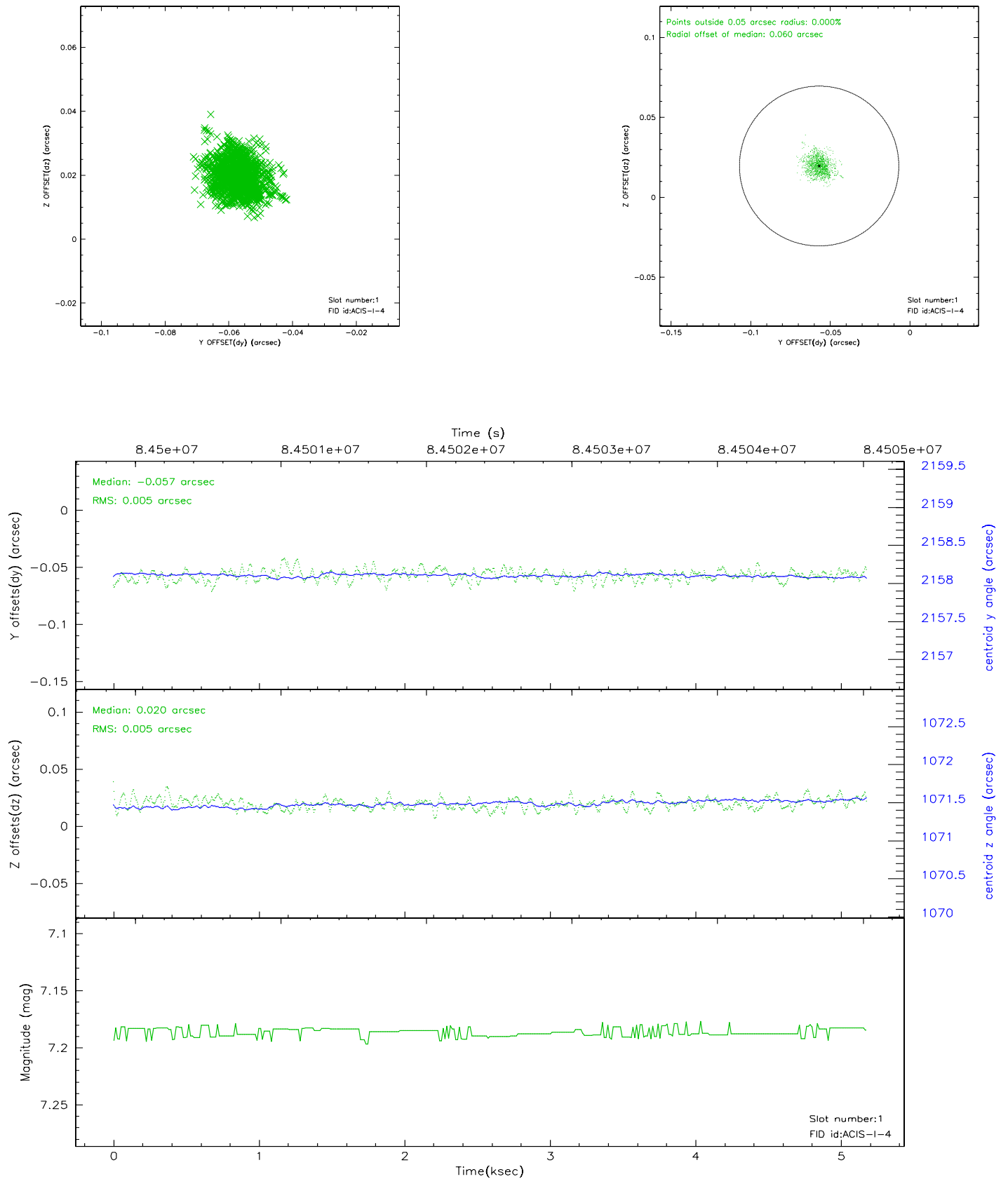


2.5 FID Slots

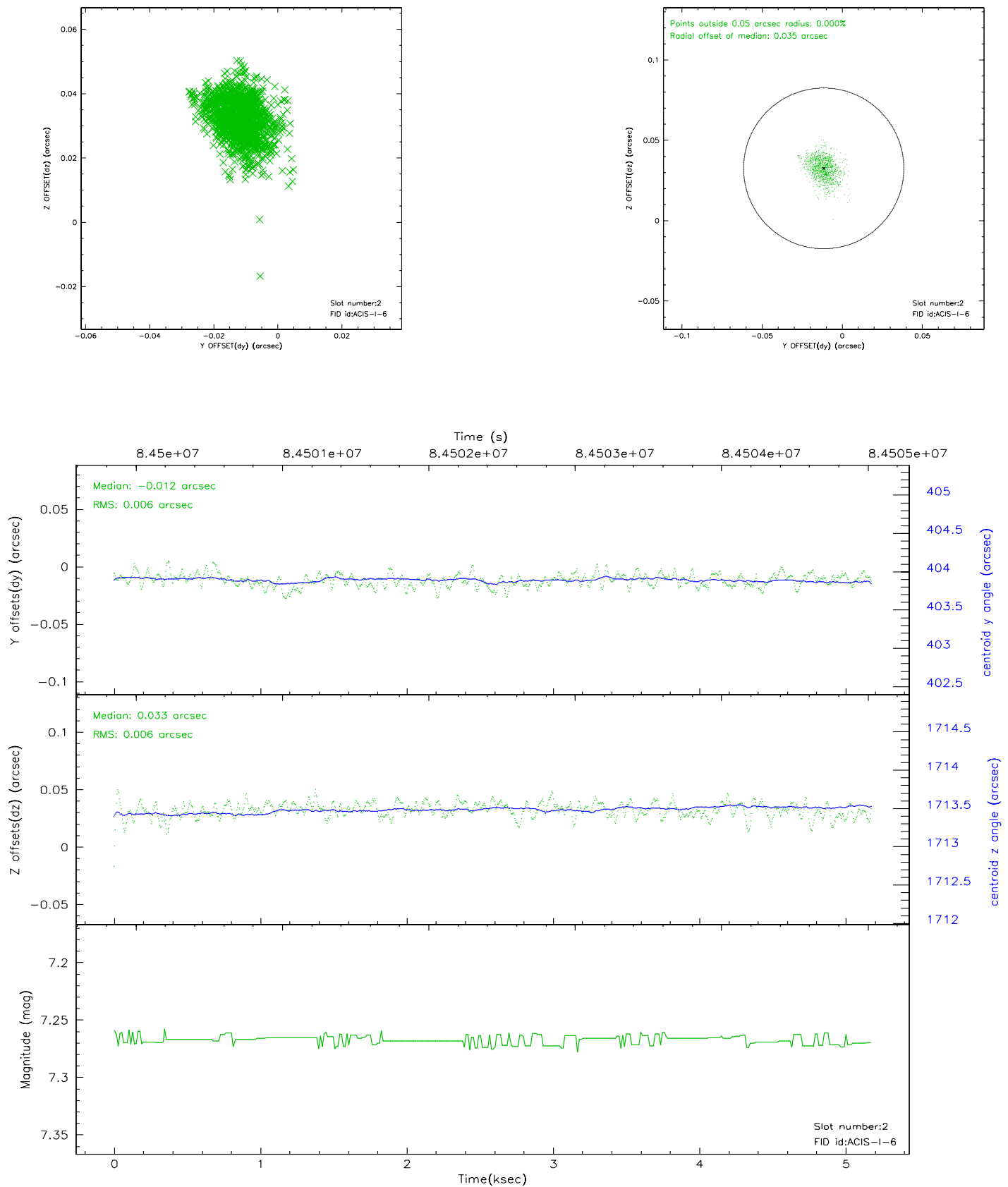
2.5.1 Slot 0



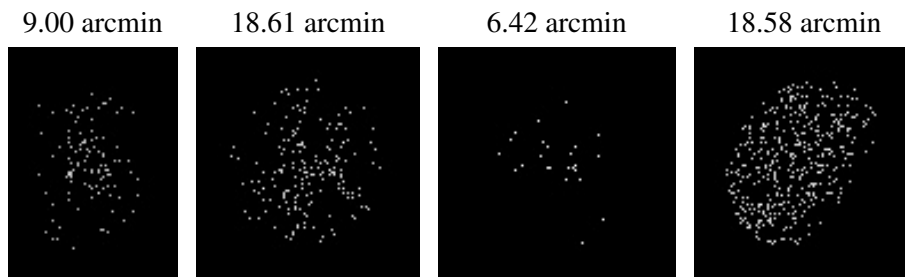
2.5.2 Slot 1



2.5.3 Slot 2



3 Point Sources



A Summary

A.1 Status

V&V Scientist	Jen Lauer
V&V Date (YYYY-MM-DD)	2007.06.07
V&V Edition	1
V&V Disposition and Status	OK
V&V Charge Time	4.454

A.2 Comments