

# V&V Reference Report

## L2 ASCDS Version : 8.4.4

Observation 9255 - L2 Version 2  
Chandra X-Ray Center

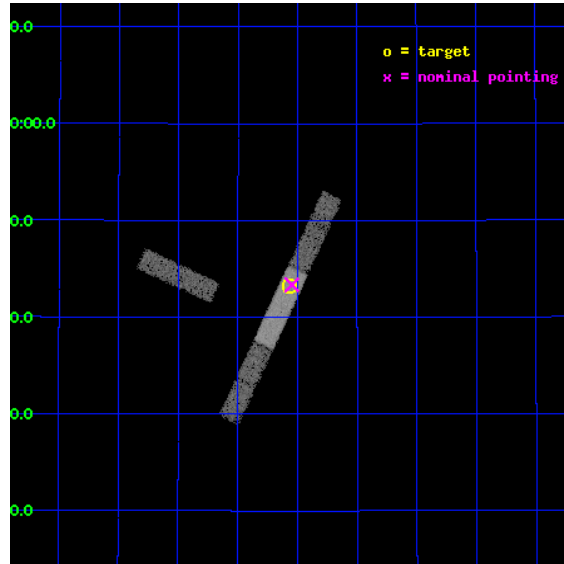
L2 Processing Date : May 9 2012

## Contents

<b>1</b>	<b>Front</b>	<b>2</b>
<b>2</b>	<b>OBI</b>	<b>3</b>
2.1	OBI . . . . .	3
2.1.1	Images . . . . .	3
2.1.2	Bias . . . . .	3
2.1.3	Parameters . . . . .	4
2.1.4	Events . . . . .	4
2.2	Compared Parameters . . . . .	5
2.3	Aspect . . . . .	6
2.4	Star Slots . . . . .	9
2.4.1	Slot 3 . . . . .	9
2.4.2	Slot 4 . . . . .	10
2.4.3	Slot 5 . . . . .	11
2.4.4	Slot 6 . . . . .	12
2.4.5	Slot 7 . . . . .	13
2.5	FID Slots . . . . .	14
2.5.1	Slot 0 . . . . .	14
2.5.2	Slot 1 . . . . .	15
2.5.3	Slot 2 . . . . .	16
<b>A</b>	<b>Summary</b>	<b>17</b>
A.1	Status . . . . .	17
A.2	Comments . . . . .	17

# 1 Front

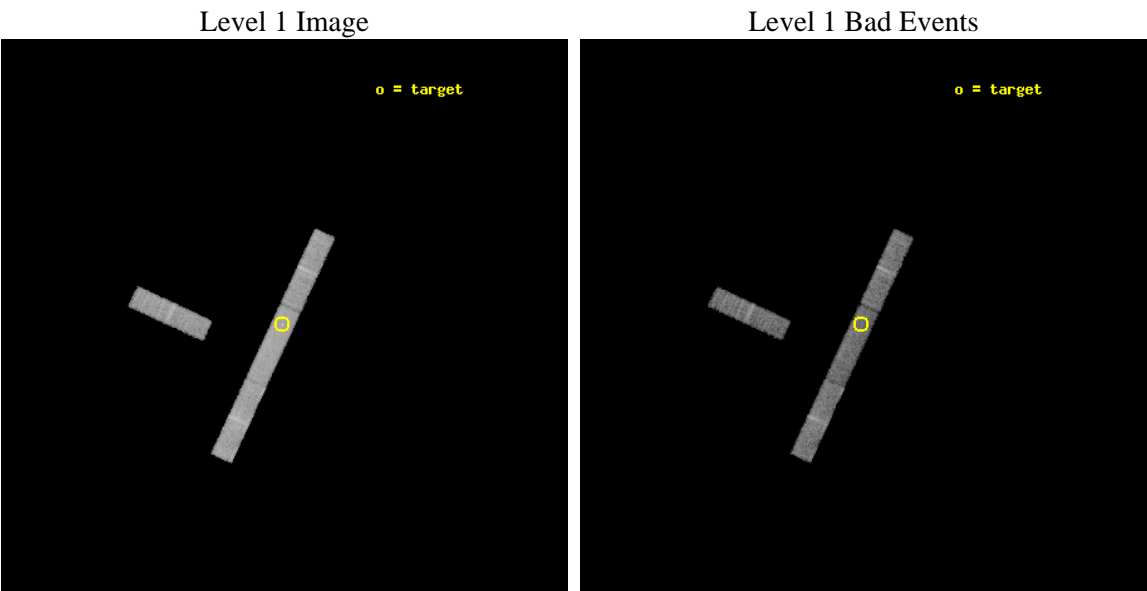
seq_num	701696	Sequence number
obs_id	9255	Observation id
title	Orientation effects in the X-ray and multi-wavelength properties of high-z, 3CRR quasars.	Proposal title
observer	Dr. Belinda Wilkes	Principal investigator
object	3CRR 270.1	Source name
dtcycle	0	&#160
cycle	P	events from which exps? Prim/Second/Both
ra_targ	185.141667	Observer's specified target RA [deg]
dec_targ	33.719861	Observer's specified target Dec [deg]
ra_nom	185.13670838842	Nominal RA [deg]
dec_nom	33.722555683747	Nominal Dec [deg]
roll_nom	115.02796641395	Nominal Roll [deg]
revision	2	Processing version of data
ontime	10069.978537261	Sum of GTIs [s]
livetime	9672.998671772	Livetime [s]
ontime3	10069.896457255	Sum of GTIs [s]
ontime6	10067.85543704	Sum of GTIs [s]
ontime7	10069.978537261	Sum of GTIs [s]
ontime8	10069.855417252	Sum of GTIs [s]
l2events	25642	Number of level 2 events



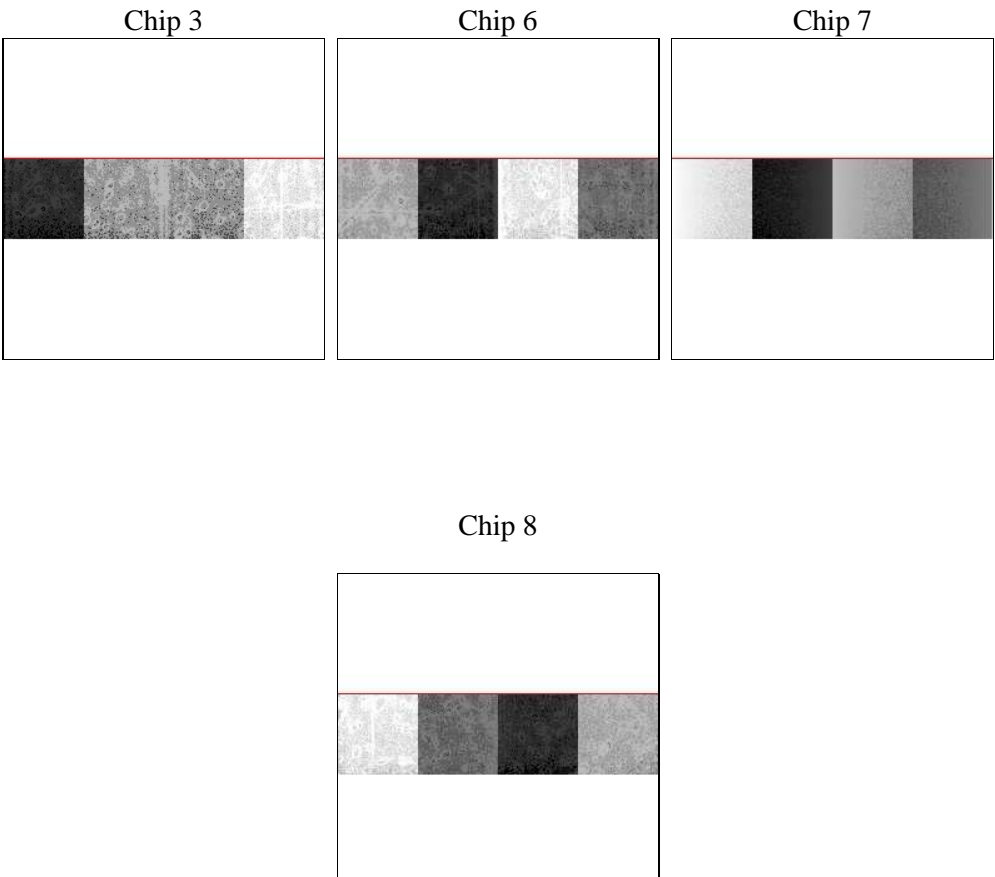
2 OBI

2.1 OBI

2.1.1 Images



2.1.2 Bias



### 2.1.3 Parameters

obi_num	1	Obi number	sched_exp_time	10000.000000	[s] Scheduled observation exposure time
ascdsver	8.4.4	Processing system revision	ontime	10069.978537261	Sum of GTIs [s]
caldsver	4.4.9	&#160	ontime3	10069.896457255	Sum of GTIs [s]
date	2012-05-09T18:37:35	Date and time of file creation	ontime6	10067.85543704	Sum of GTIs [s]
revision	2	Processing version of data	ontime7	10069.978537261	Sum of GTIs [s]
			ontime8	10069.855417252	Sum of GTIs [s]
			l1events	132053	Number of level 1 events

### 2.1.4 Events

	ccd 3	ccd 6	ccd 7	ccd 8
level 1 events	27228	30233	37034	37558
rejected events	23766	26660	20145	29526
rejected %	87%	88%	54%	78%

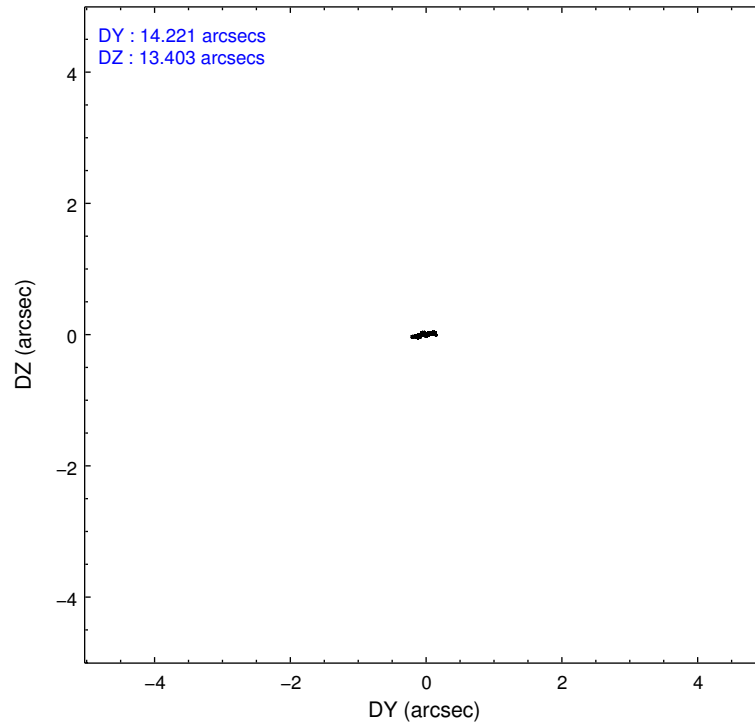
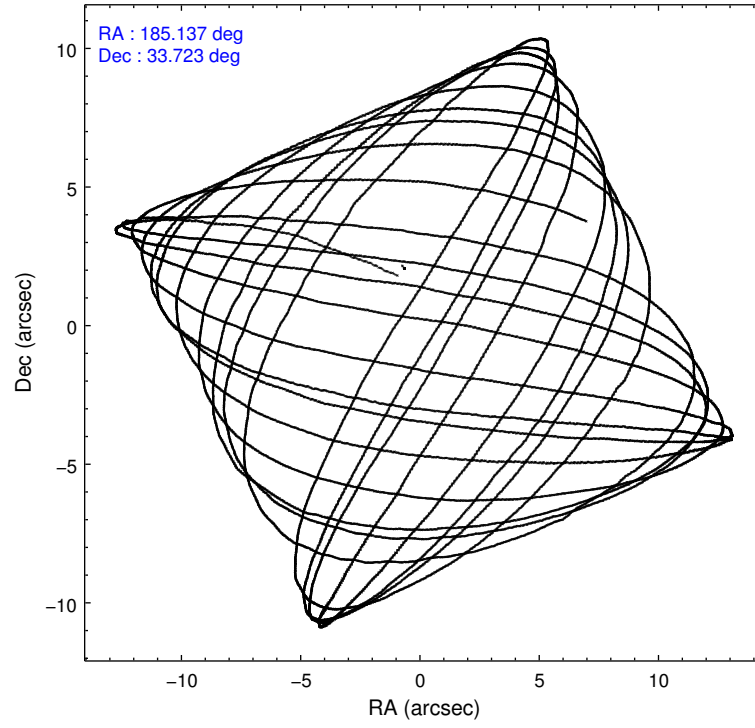
	ccd 3	ccd 6	ccd 7	ccd 8
grade 0 events	1338	1287	1962	2368
	4%	4%	5%	6%
grade 1 events	8	7	40	19
	0%	0%	0%	0%
grade 2 events	619	654	3531	1717
	2%	2%	9%	4%
grade 3 events	475	500	1747	870
	1%	1%	4%	2%
grade 4 events	448	472	1631	848
	1%	1%	4%	2%
grade 5 events	1112	1239	3443	1578
	4%	4%	9%	4%
grade 6 events	582	662	8021	2230
	2%	2%	21%	5%
grade 7 events	22646	25412	16659	27928
	83%	84%	44%	74%

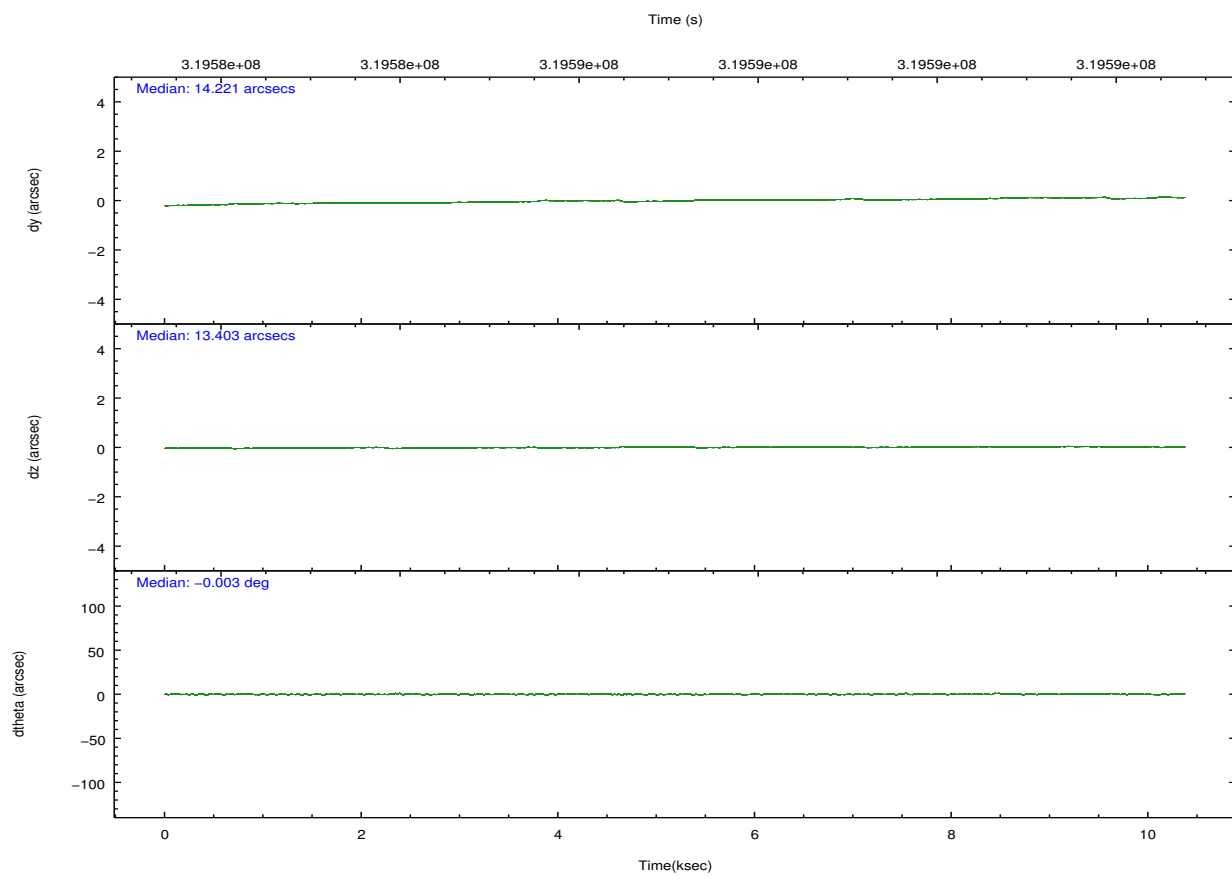
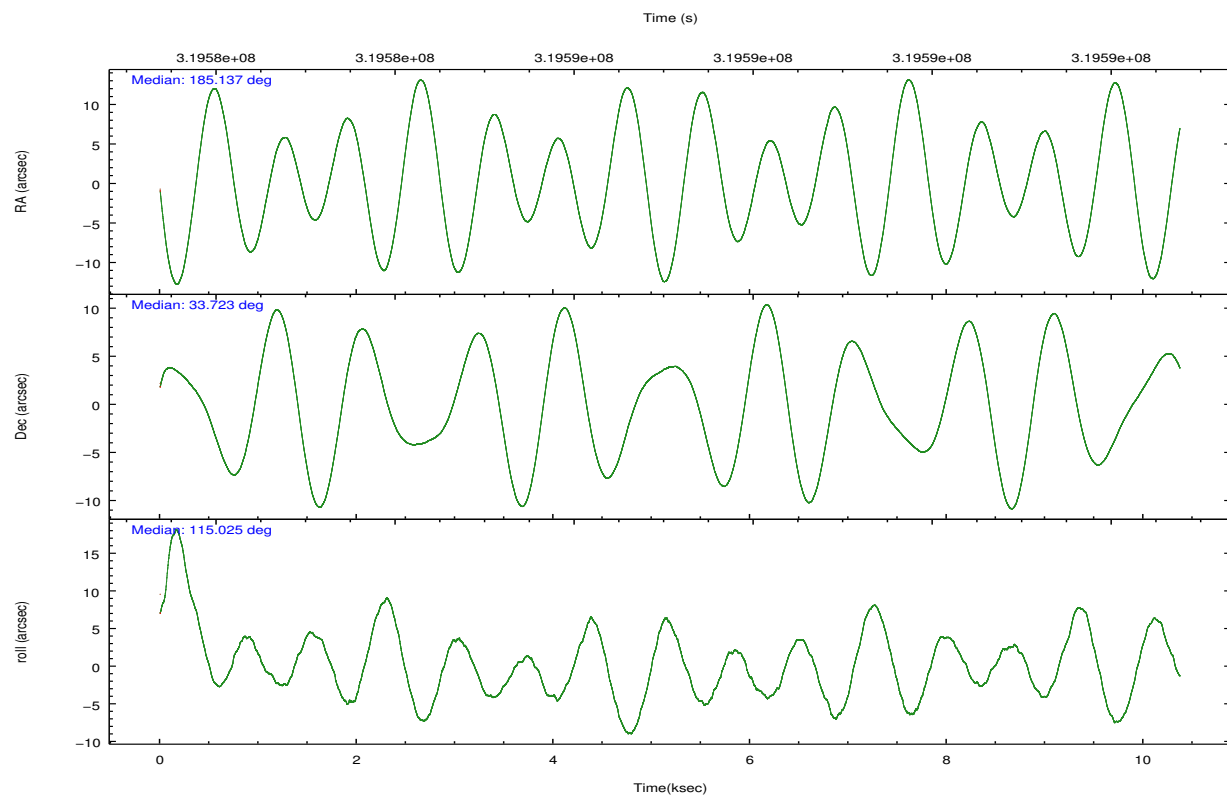


## 2.2 Compared Parameters

Parameter	Planned	Actual	Parameter	Planned	Actual
Instrument	ACIS	ACIS	Obspar format version number	7	7
Detector	ACIS-3678	ACIS-3678	Obspar file type	PREDICTED	ACTUAL
Grating	NONE	NONE	Obspar update status	NONE	UPDATED
Data mode	FAINT	FAINT	CCD I0 on	N	N
Observation mode	POINTING	POINTING	CCD I1 on	N	N
[deg] Pointing RA	185.163981	185.1367083884243	CCD I2 on	N	N
[deg] Pointing Dec	33.707154	33.72255568374656	CCD I3 on	O1	Y
[deg] Pointing Roll	114.856204	115.0279664139514	CCD S0 on	N	N
[mm] SIM focus pos	-0.684267	-0.6828225247311905	CCD S1 on	N	N
[mm] SIM defocus	0	0.001444936568705701	CCD S2 on	O3	Y
[mm] SIM translation stage pos	-190.132523	-190.1425803651734	CCD S3 on	Y	Y
[mm] SIM translation stage offset	0	0.01005778216563158	CCD S4 on	O2	Y
[s] Observation start time (MET)	319582266.184000	319581508.79919	CCD S5 on	N	N
Observation start date	2008-02-16T20:50:01	2008-02-16T20:38:28	Number of optional ACIS chips dropped	0	0
[s] Observation end time (MET)	319592266.184000	319592767.39974	On-chip summing requested	N	N
Observation end date	2008-02-16T23:36:41	2008-02-16T23:46:07	Subarray requested	CUSTOM	1/4
Read mode	TIMED	TIMED	Subarray start row	385	385
			Subarray row count	256	256
			Alternating exposures requested	N	N
			[s] Primary exposure time	0.000000	1

## 2.3 Aspect



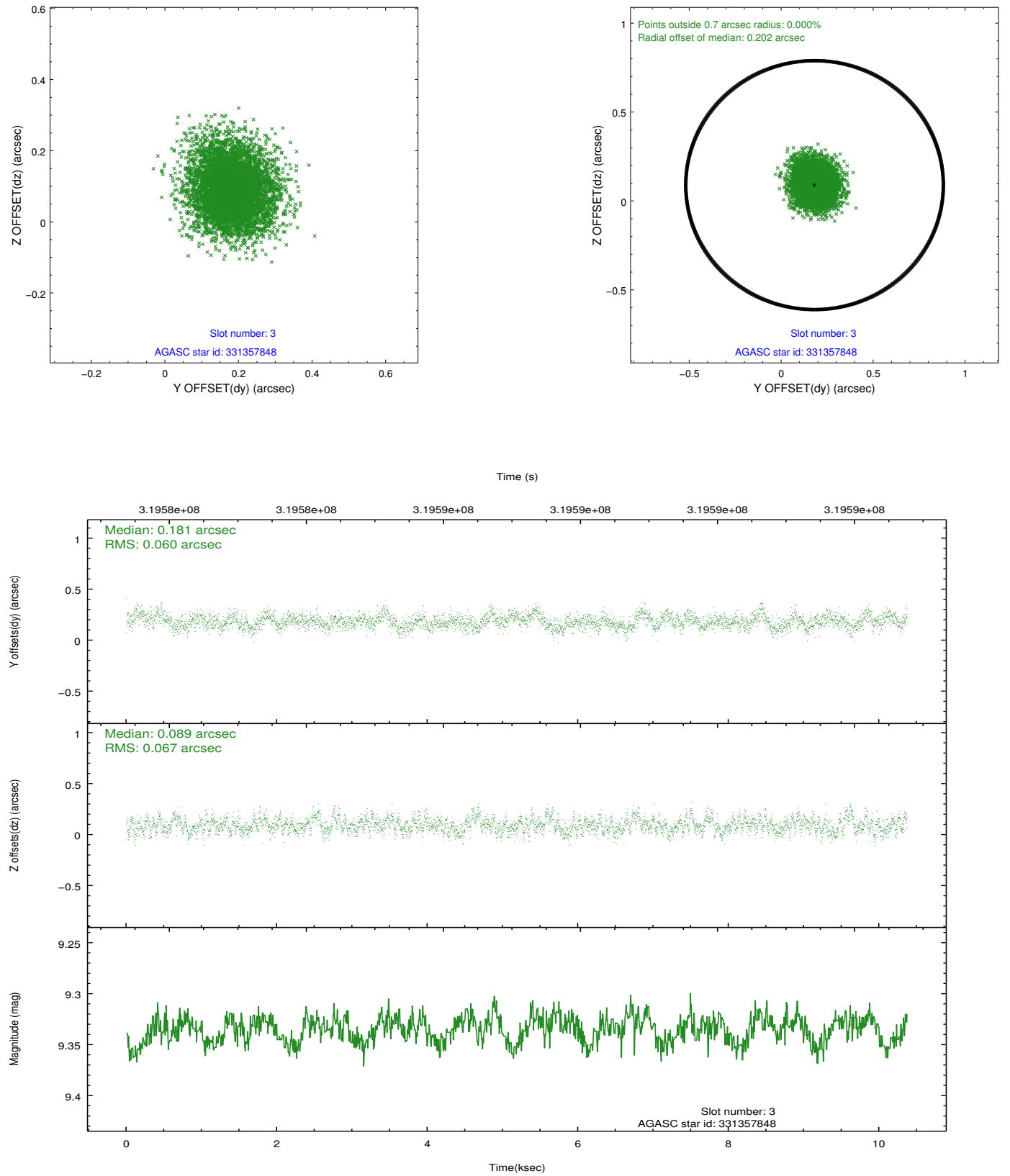


### Slot Statistics

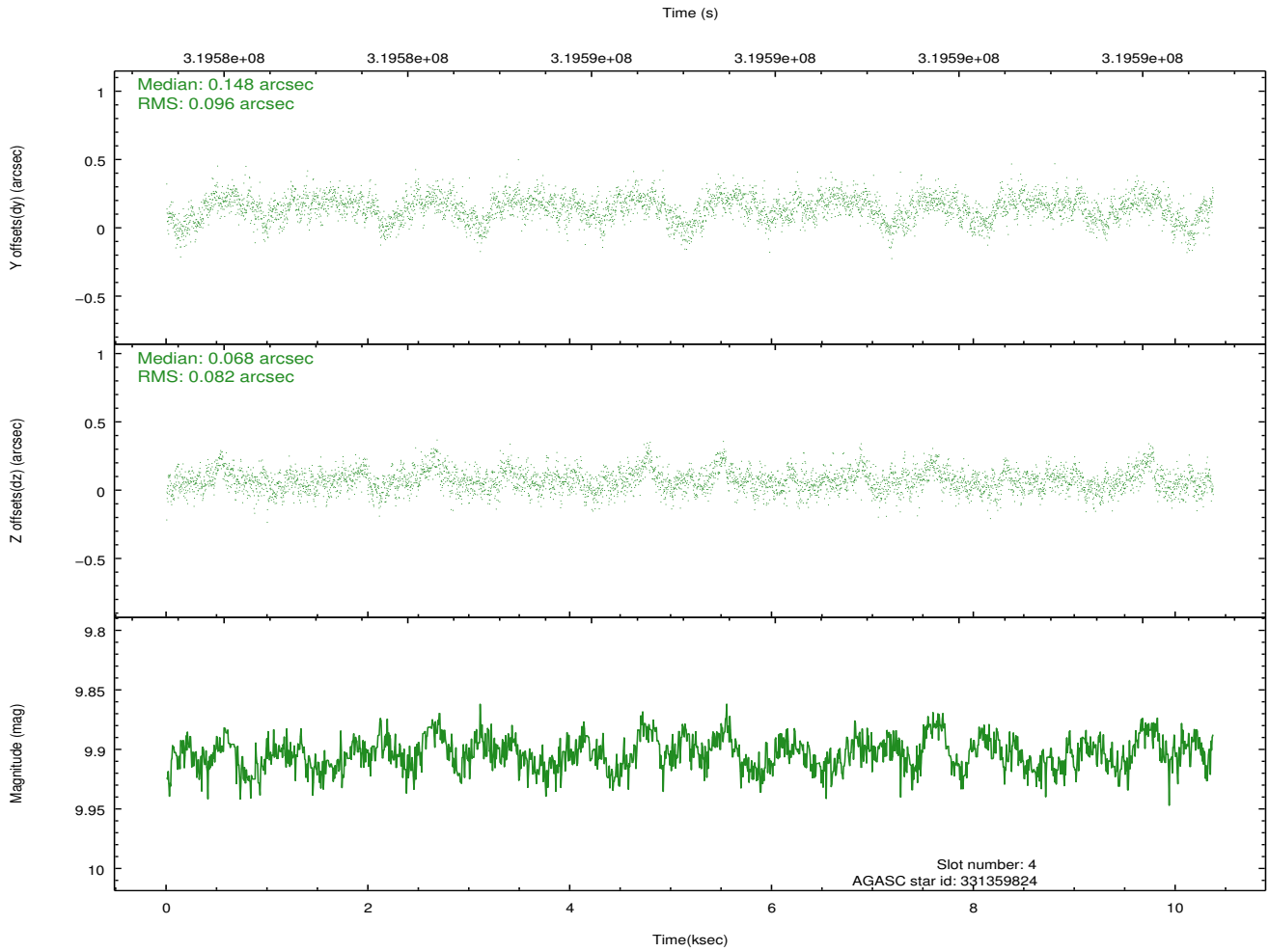
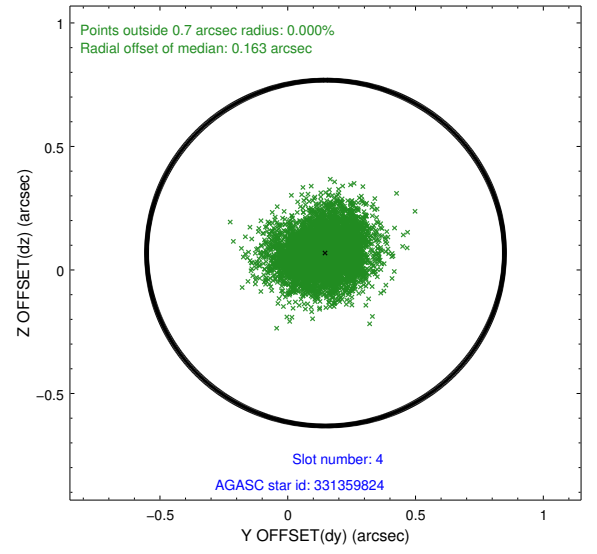
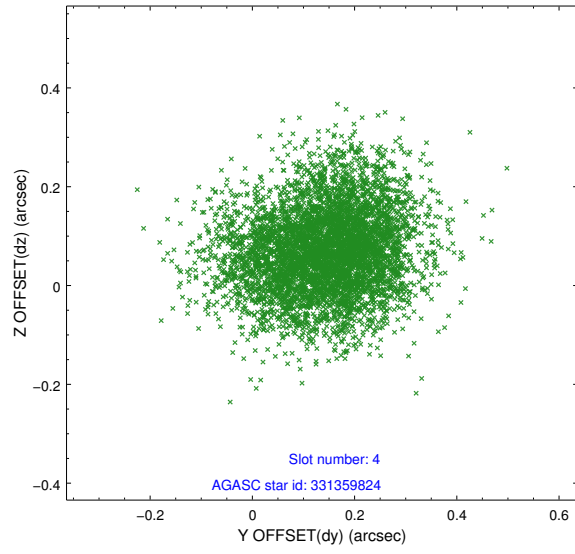
slot	status	id	mag	n_pts	med_dy	med_dz	dr1	dr2	ra	dec	mean_y	mean_z
0	FID	ACIS-S-2	7.10	2530	-0.052	-0.063	0.009	0.014	0.000000	0.000000	-767.23	-1734.74
1	FID	ACIS-S-4	7.19	2529	0.177	0.042	0.007	0.013	0.000000	0.000000	2146.07	173.29
2	FID	ACIS-S-5	7.23	2530	-0.156	0.030	0.006	0.011	0.000000	0.000000	-1819.51	167.57
3	GUIDE	331357848	9.34	5057	0.181	0.089	0.096	0.157	185.380866	33.469022	-1051.10	-230.79
4	GUIDE	331359824	9.90	5050	0.148	0.068	0.135	0.218	185.748520	33.293976	-2084.57	-972.63
5	GUIDE	331495560	10.28	5054	-0.227	-0.149	0.201	0.306	184.463673	33.790131	1157.64	1772.29
6	GUIDE	331617624	9.00	5054	-0.017	-0.023	0.078	0.129	185.131025	34.262865	1857.00	-751.05
7	GUIDE	331622976	8.84	5056	-0.076	0.020	0.088	0.139	185.510535	34.255670	1360.25	-1765.31

## 2.4 Star Slots

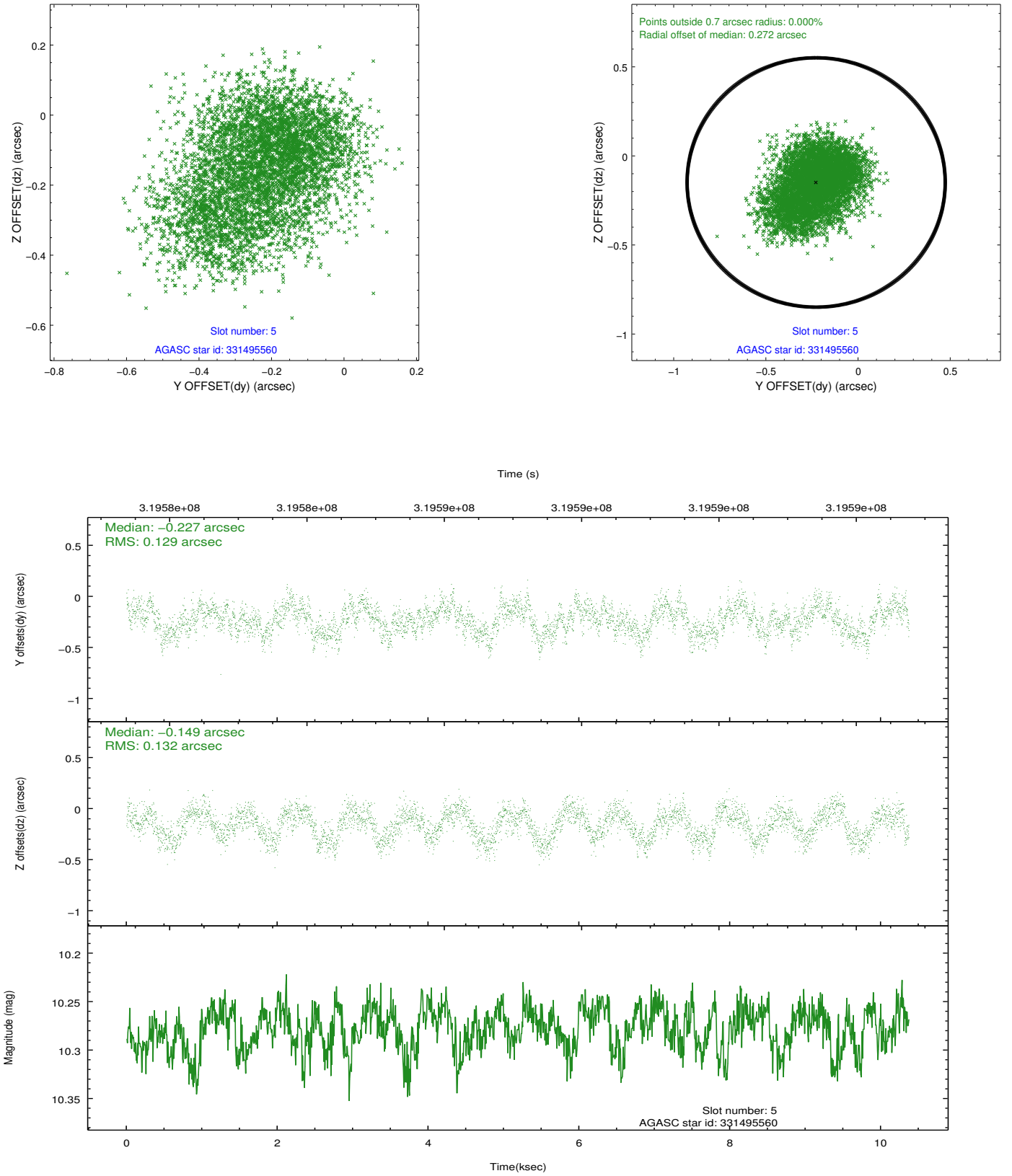
### 2.4.1 Slot 3



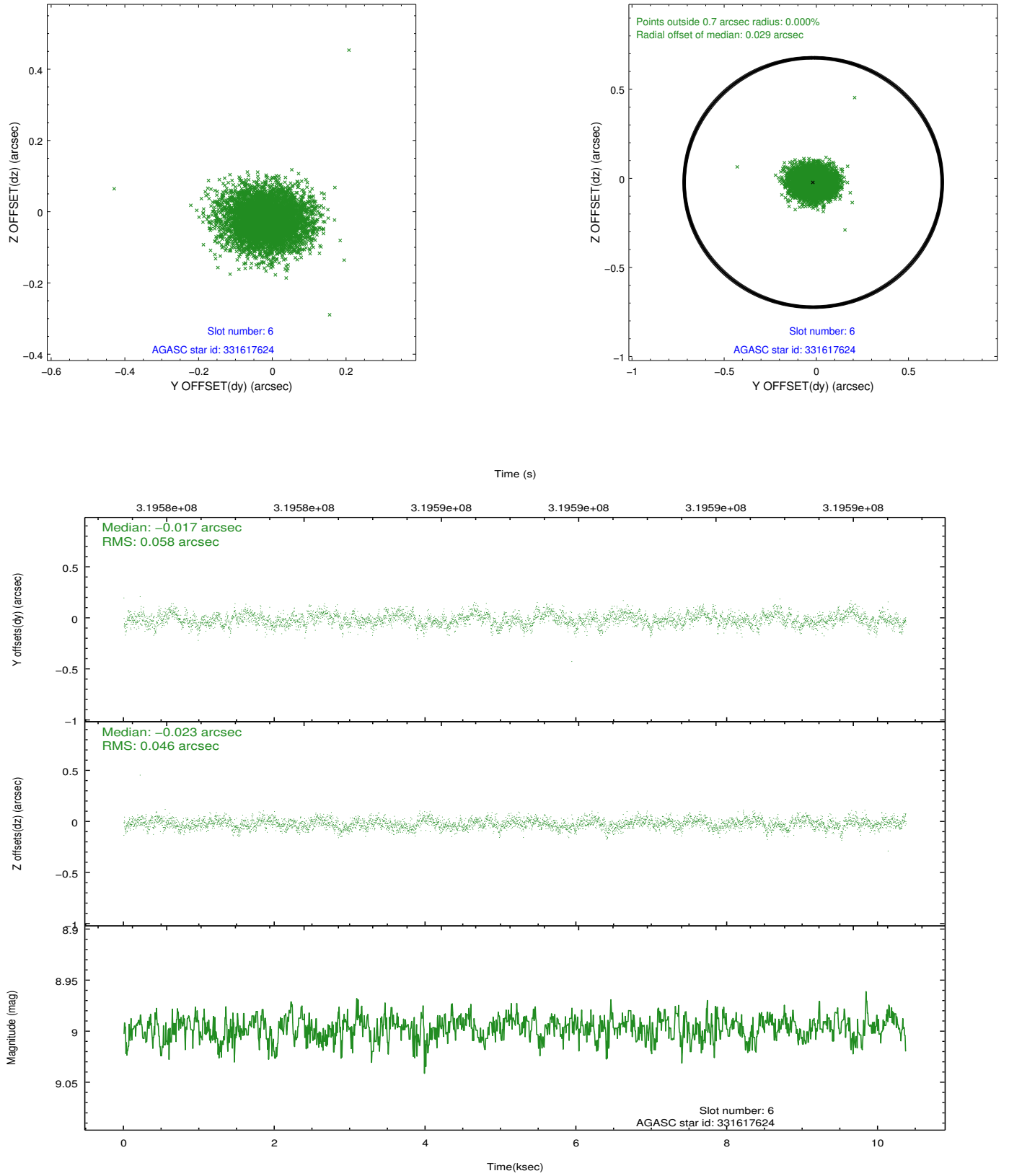
## 2.4.2 Slot 4



### 2.4.3 Slot 5

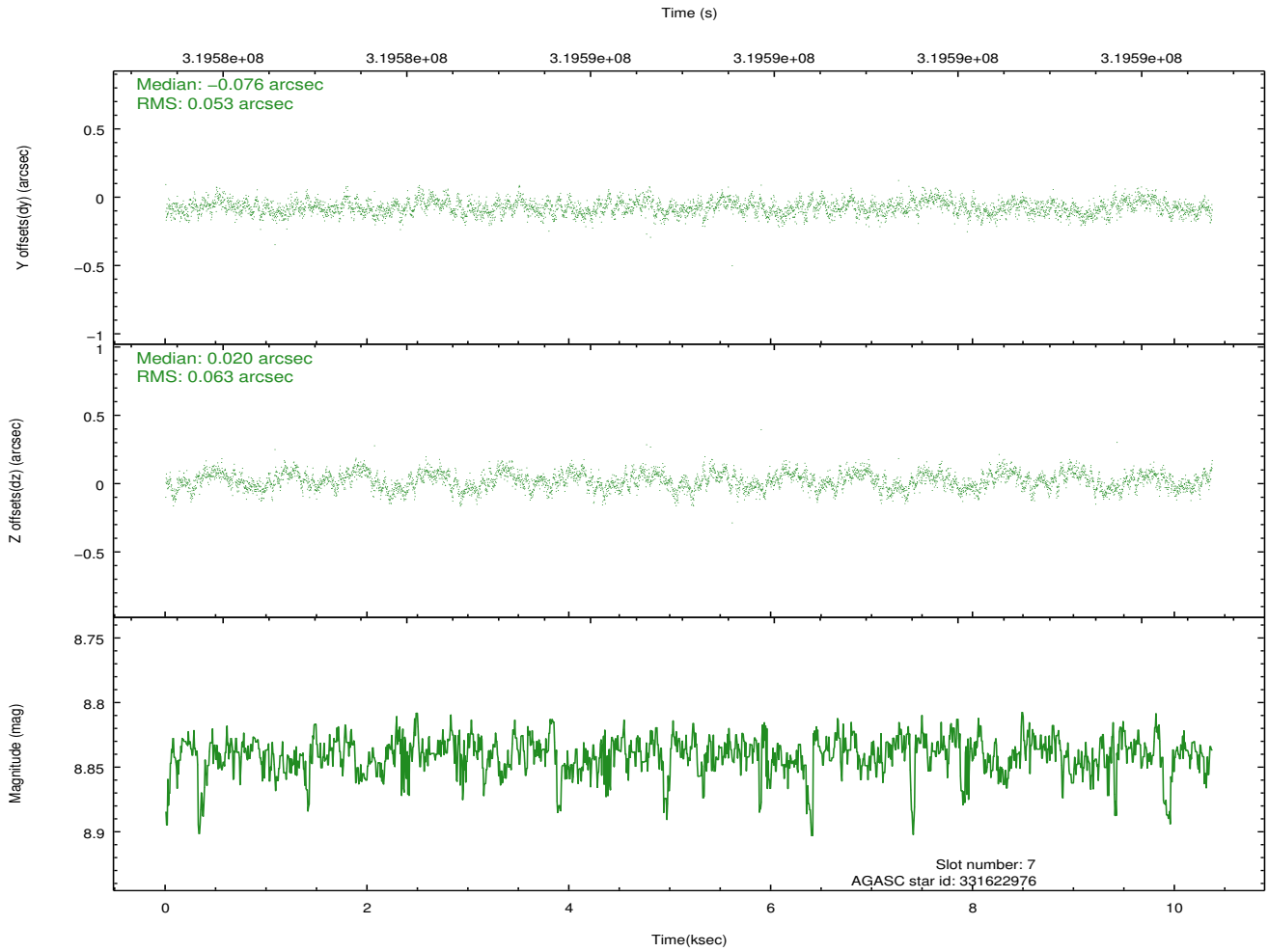
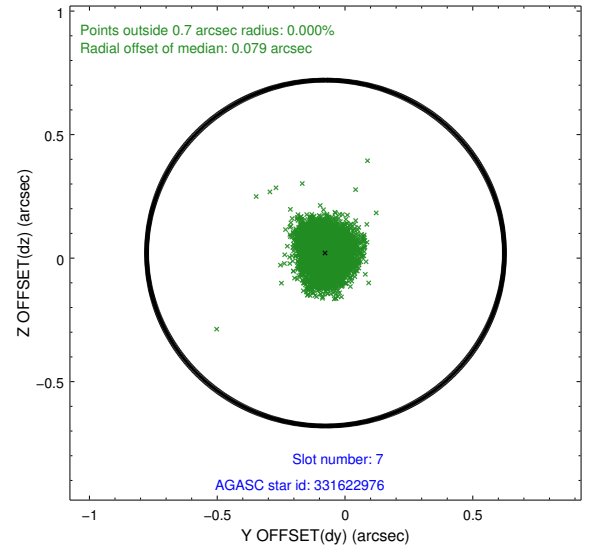
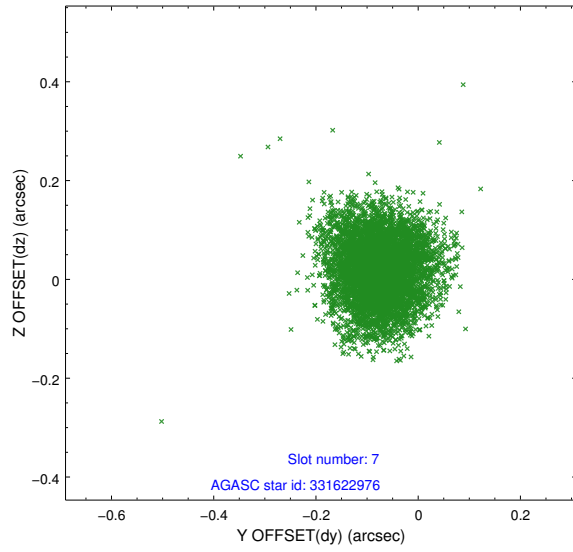


## 2.4.4 Slot 6



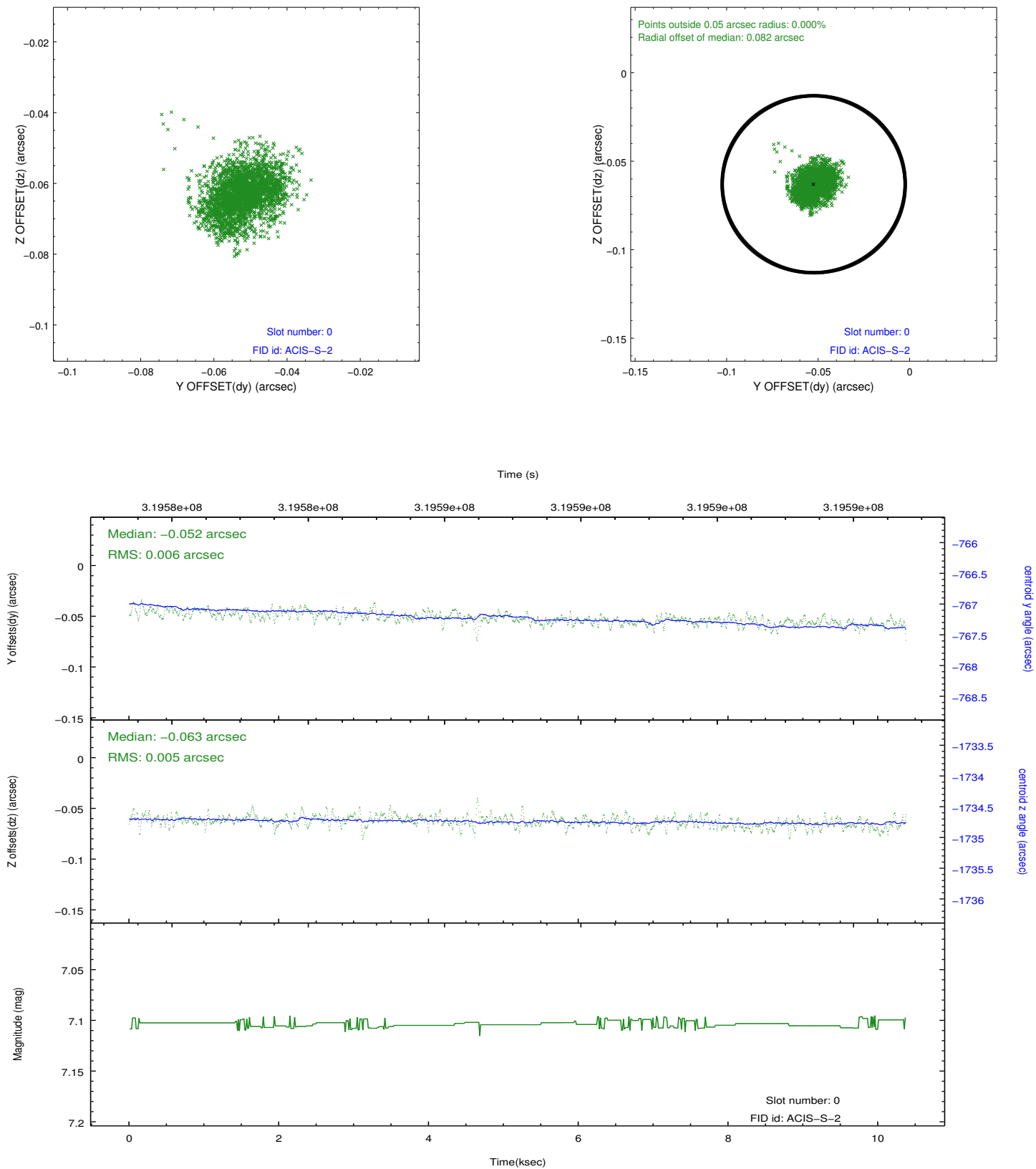


### 2.4.5 Slot 7

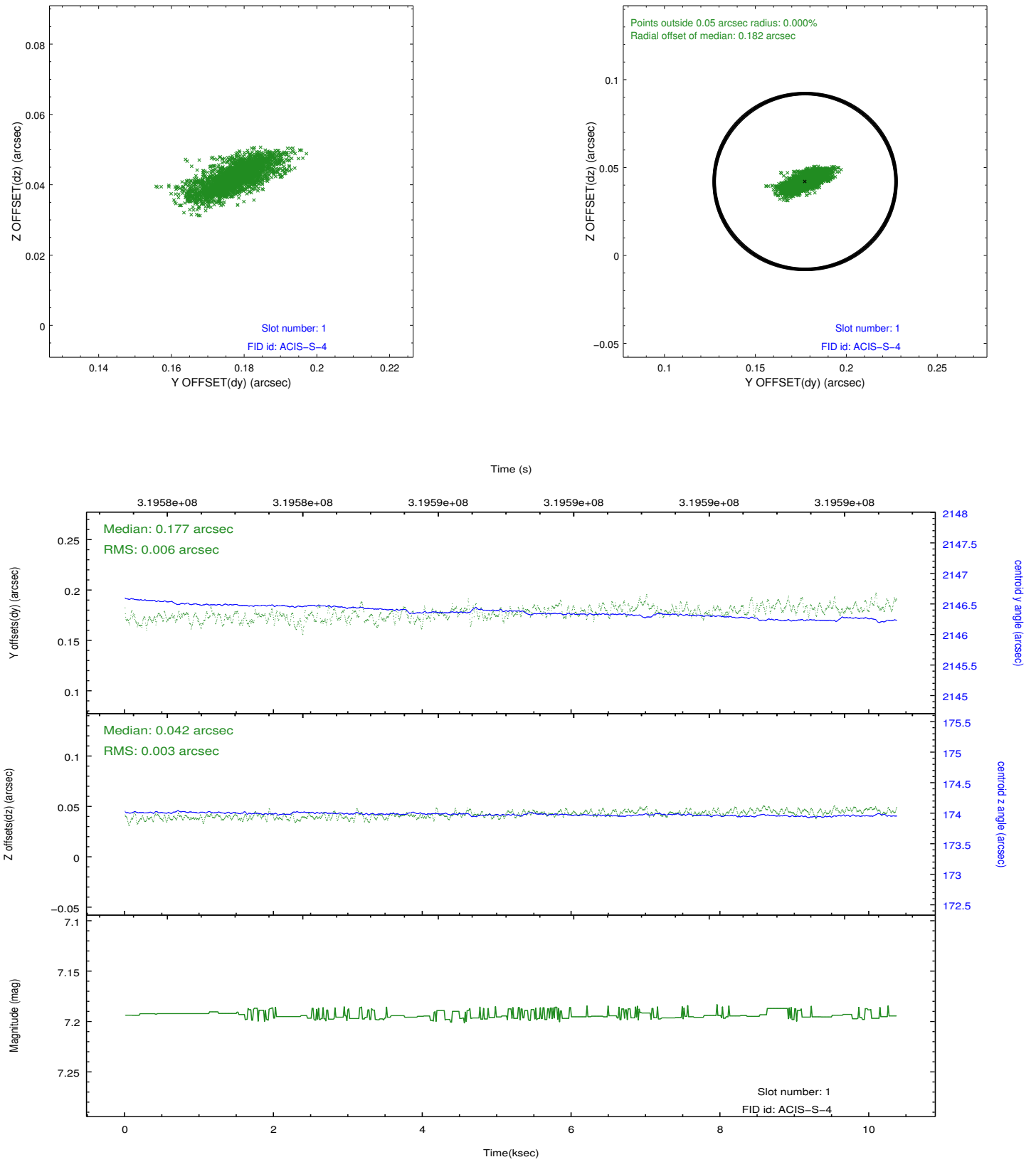


## 2.5 FID Slots

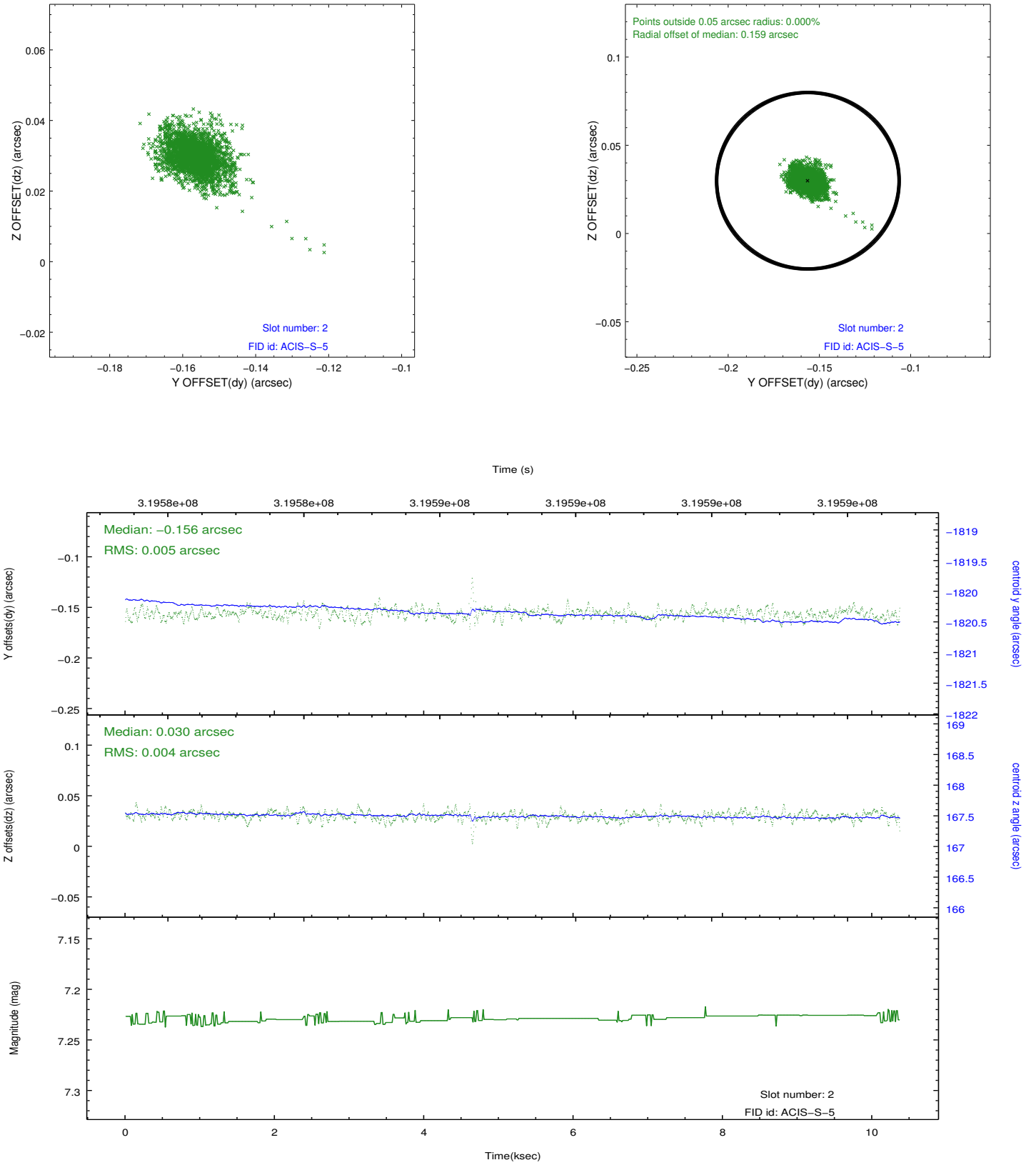
### 2.5.1 Slot 0



## 2.5.2 Slot 1



### 2.5.3 Slot 2



## **A Summary**

### **A.1 Status**

V&V Scientist	Jen Lauer
V&V Date (YYYY-MM-DD)	2012.05.11
V&V Edition	1
V&V Disposition and Status	OK
V&V Charge Time	10.07

### **A.2 Comments**