

# V&V Reference Report

## L2 ASCDS Version : 8.4.4

Observation 9165 - L2 Version 2  
Chandra X-Ray Center

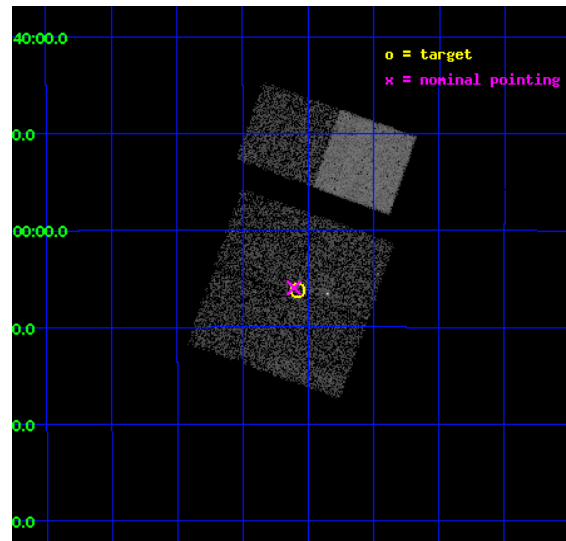
L2 Processing Date : May 6 2012

## Contents

<b>1</b>	<b>Front</b>	<b>2</b>
<b>2</b>	<b>OBI</b>	<b>3</b>
2.1	OBI . . . . .	3
2.1.1	Images . . . . .	3
2.1.2	Bias . . . . .	3
2.1.3	Parameters . . . . .	4
2.1.4	Events . . . . .	4
2.2	Compared Parameters . . . . .	5
2.3	Aspect . . . . .	6
2.4	Star Slots . . . . .	9
2.4.1	Slot 3 . . . . .	9
2.4.2	Slot 4 . . . . .	10
2.4.3	Slot 5 . . . . .	11
2.4.4	Slot 6 . . . . .	12
2.4.5	Slot 7 . . . . .	13
2.5	FID Slots . . . . .	14
2.5.1	Slot 0 . . . . .	14
2.5.2	Slot 1 . . . . .	15
2.5.3	Slot 2 . . . . .	16
<b>A</b>	<b>Summary</b>	<b>17</b>
A.1	Status . . . . .	17
A.2	Comments . . . . .	17

# 1 Front

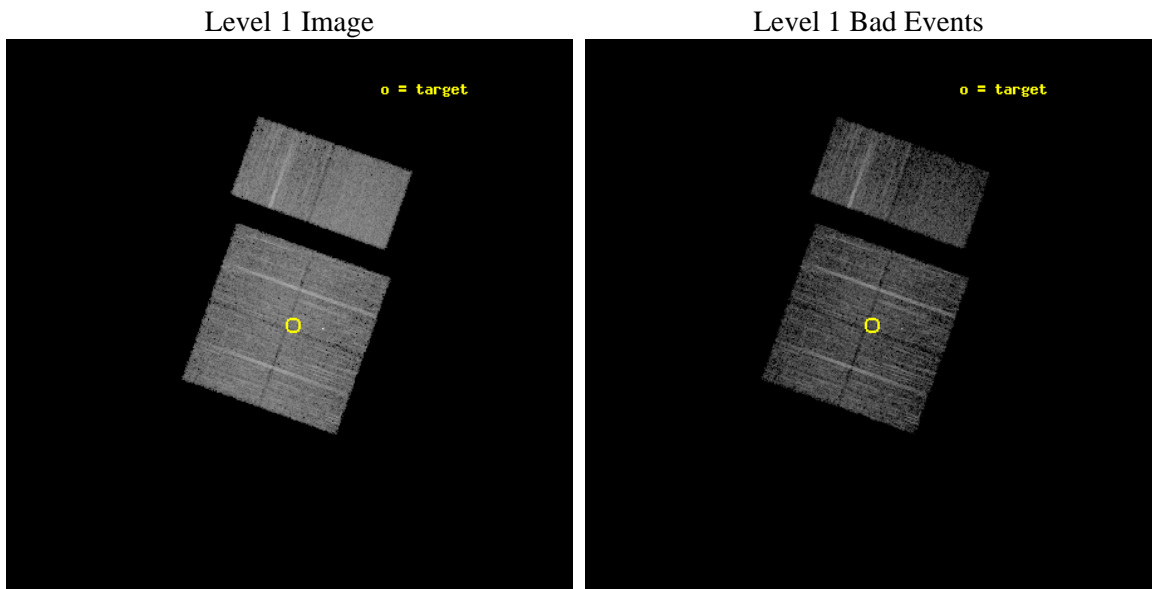
seq_num	701607	Sequence number
obs_id	9165	Observation id
title	Chandra follow-up observations of Swift/BAT unidentified sources: Searching for obscured type II quasars	Proposal title
observer	Dr. Peter Predehl	Principal investigator
object	J0727.5-2406	Source name
dtcycle	0	&#160
cycle	P	events from which exps? Prim/Second/Both
ra_targ	111.895	Observer's specified target RA [deg]
dec_targ	-24.103889	Observer's specified target Dec [deg]
ra_nom	111.90210141908	Nominal RA [deg]
dec_nom	-24.099065307742	Nominal Dec [deg]
roll_nom	19.551756258796	Nominal Roll [deg]
revision	2	Processing version of data
ontime	5139.1999809146	Sum of GTIs [s]
livetime	5074.1243363015	Livetime [s]
ontime0	5139.1999809146	Sum of GTIs [s]
ontime1	5139.1999809146	Sum of GTIs [s]
ontime2	5139.1999809146	Sum of GTIs [s]
ontime3	5139.1999809146	Sum of GTIs [s]
ontime6	5139.1999809146	Sum of GTIs [s]
ontime7	5139.1999809146	Sum of GTIs [s]
l2events	39557	Number of level 2 events



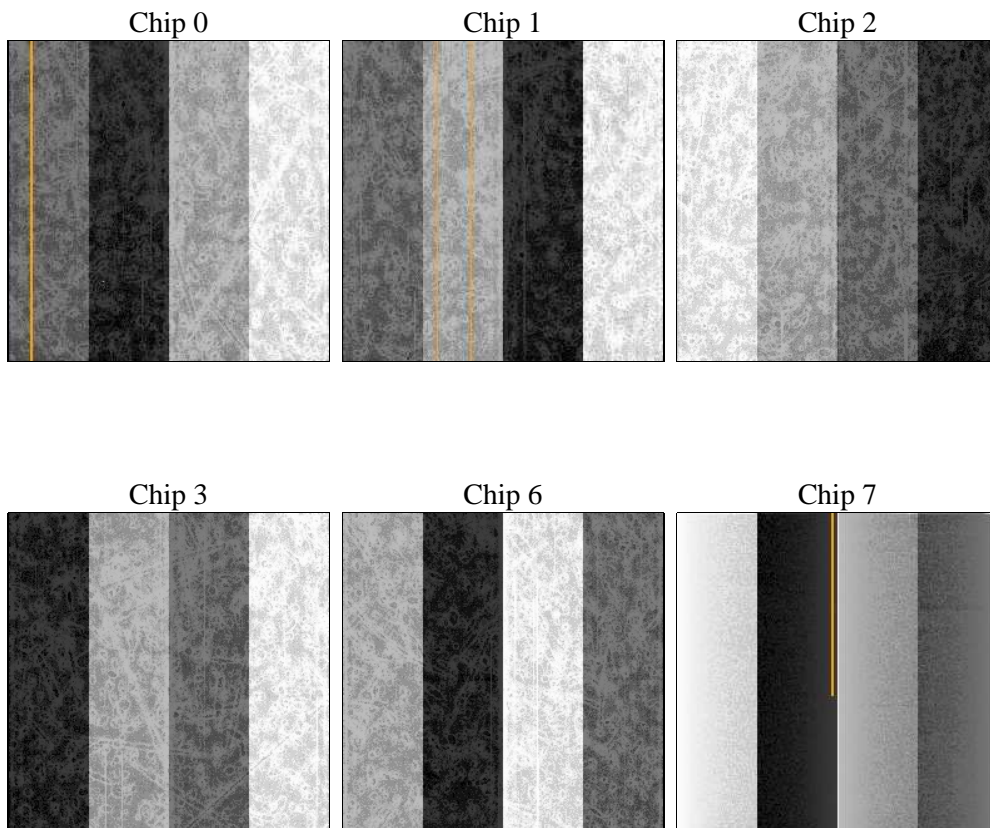
## 2 OBI

### 2.1 OBI

#### 2.1.1 Images



#### 2.1.2 Bias



### 2.1.3 Parameters

obi_num	0	Obi number	sched_exp_time	5000.000000	[s] Scheduled observation exposure time
ascdsver	8.4.4	Processing system revision	ontime	5139.1999809146	Sum of GTIs [s]
caldsver	4.4.9	&#160	ontime0	5139.1999809146	Sum of GTIs [s]
date	2012-05-06T14:50:03	Date and time of file creation	ontime1	5139.1999809146	Sum of GTIs [s]
revision	2	Processing version of data	ontime2	5139.1999809146	Sum of GTIs [s]
			ontime3	5139.1999809146	Sum of GTIs [s]
			ontime6	5139.1999809146	Sum of GTIs [s]
			ontime7	5139.1999809146	Sum of GTIs [s]
			l1events	279075	Number of level 1 events

### 2.1.4 Events

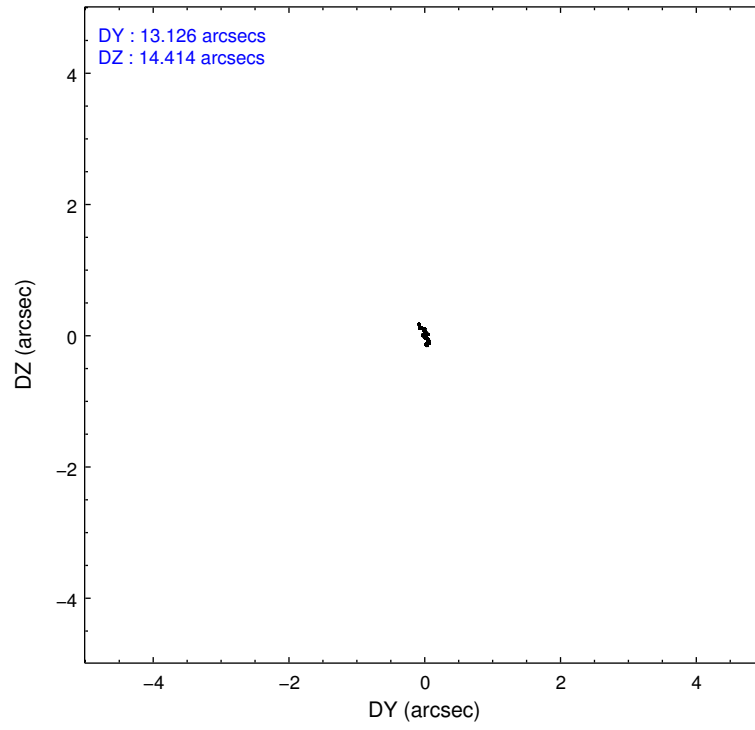
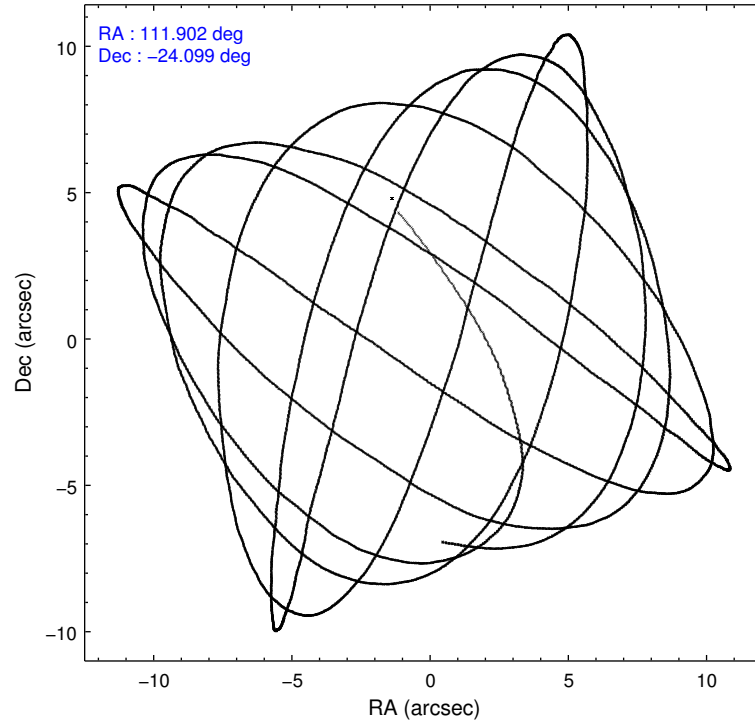
	ccd 0	ccd 1	ccd 2	ccd 3	ccd 6	ccd 7		ccd 0	ccd 1	ccd 2	ccd 3	ccd 6	ccd 7
level 1 events	42957	43906	45940	47609	48031	50632	grade 0 events	1469	1842	1638	2565	1663	2101
rejected events	38836	39117	41843	42272	43668	29418		3%	4%	3%	5%	3%	4%
rejected %	90%	89%	91%	88%	90%	58%	grade 1 events	29	35	26	96	29	77
								0%	0%	0%	0%	0%	0%
							grade 2 events	1118	1142	1081	1105	1001	4626
								2%	2%	2%	2%	2%	9%
							grade 3 events	505	592	458	557	533	2078
								1%	1%	0%	1%	1%	4%
							grade 4 events	459	541	480	576	522	2149
								1%	1%	1%	1%	1%	4%
							grade 5 events	1535	1768	1530	1913	1900	5226
								3%	4%	3%	4%	3%	10%
							grade 6 events	940	1060	800	927	1015	12108
								2%	2%	1%	1%	2%	23%
							grade 7 events	36902	36926	39927	39870	41368	22267
								85%	84%	86%	83%	86%	43%

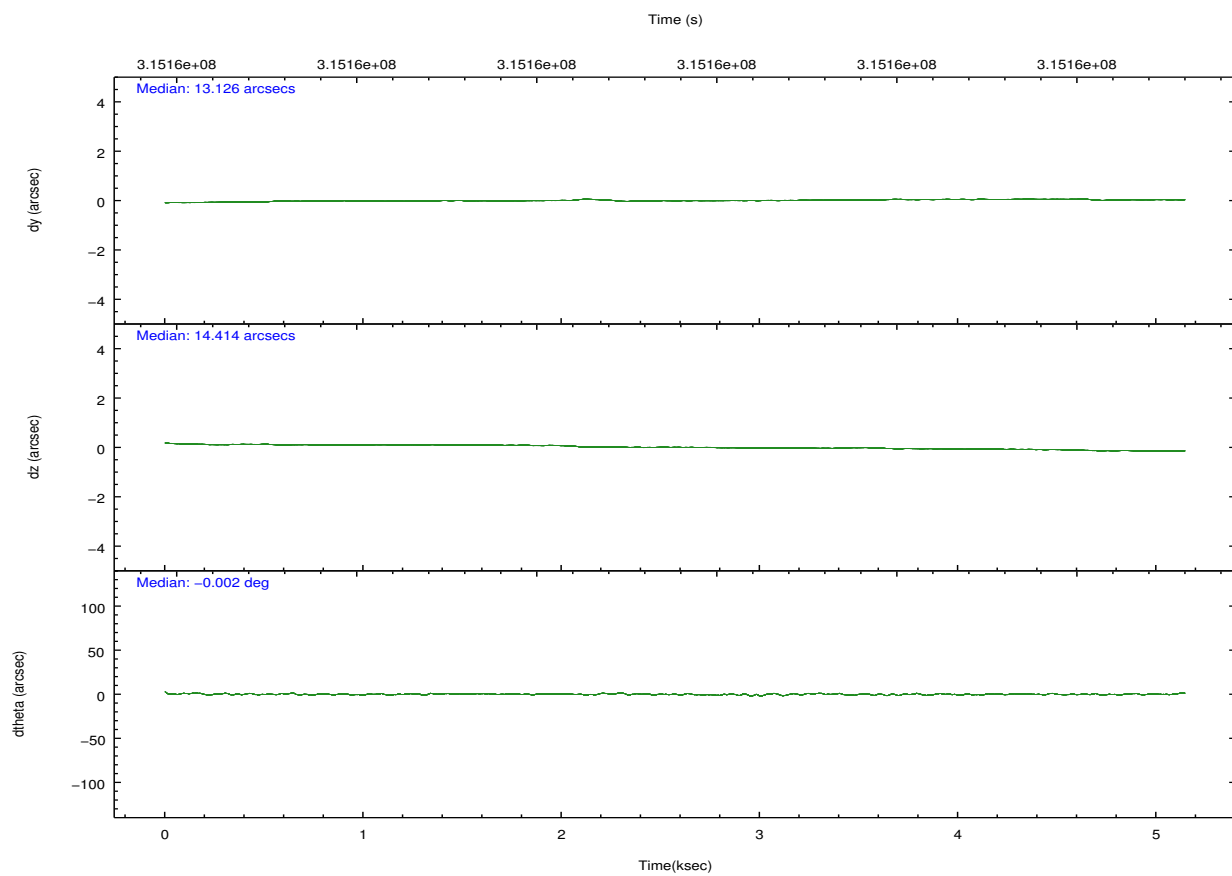
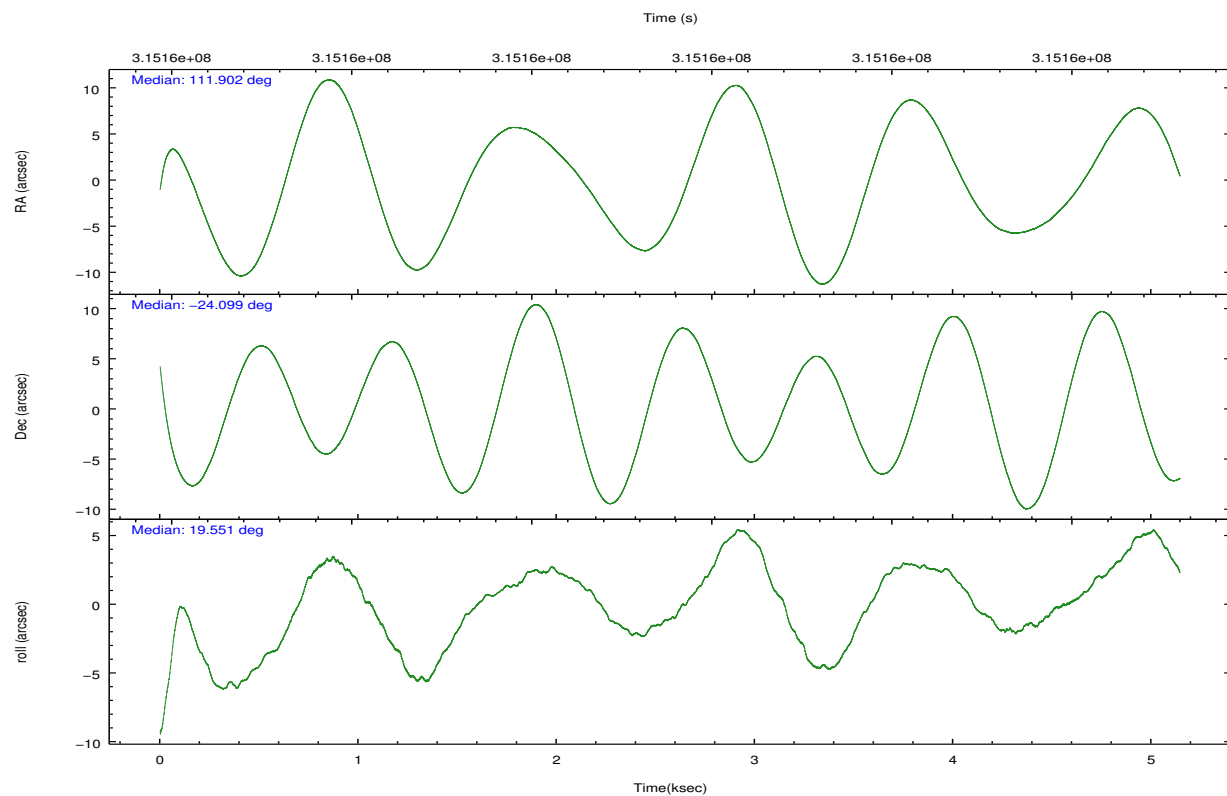


## 2.2 Compared Parameters

Parameter	Planned	Actual	Parameter	Planned	Actual
Instrument	ACIS	ACIS	Obspar format version number	7	7
Detector	ACIS-012367	ACIS-012367	Obspar file type	PREDICTED	ACTUAL
Grating	NONE	NONE	Obspar update status	NONE	UPDATED
Data mode	FAINT	FAINT	CCD I0 on	Y	Y
Observation mode	POINTING	POINTING	CCD I1 on	Y	Y
[deg] Pointing RA	111.882630	111.902101419083	CCD I2 on	Y	Y
[deg] Pointing Dec	-24.120039	-24.09906530774167	CCD I3 on	Y	Y
[deg] Pointing Roll	19.335127	19.5517562587959	CCD S0 on	N	N
[mm] SIM focus pos	-0.782348	-0.7809083437167272	CCD S1 on	N	N
[mm] SIM defocus	0	0.001439871863259334	CCD S2 on	O2	Y
[mm] SIM translation stage pos	-233.592463	-233.5874344608287	CCD S3 on	O1	Y
[mm] SIM translation stage offset	0	-0.005018542100998502	CCD S4 on	N	N
[s] Observation start time (MET)	315156340.184000	315155064.5346	CCD S5 on	N	N
Observation start date	2007-12-27T15:24:35	2007-12-27T15:04:24	Number of optional ACIS chips dropped	0	0
[s] Observation end time (MET)	315161340.184000	315162156.50994	On-chip summing requested	N	N
Observation end date	2007-12-27T16:47:55	2007-12-27T17:02:36	Subarray requested	NONE	NONE
Read mode	TIMED	TIMED	Alternating exposures requested	N	N
			[s] Primary exposure time	0.000000	3.2

## 2.3 Aspect



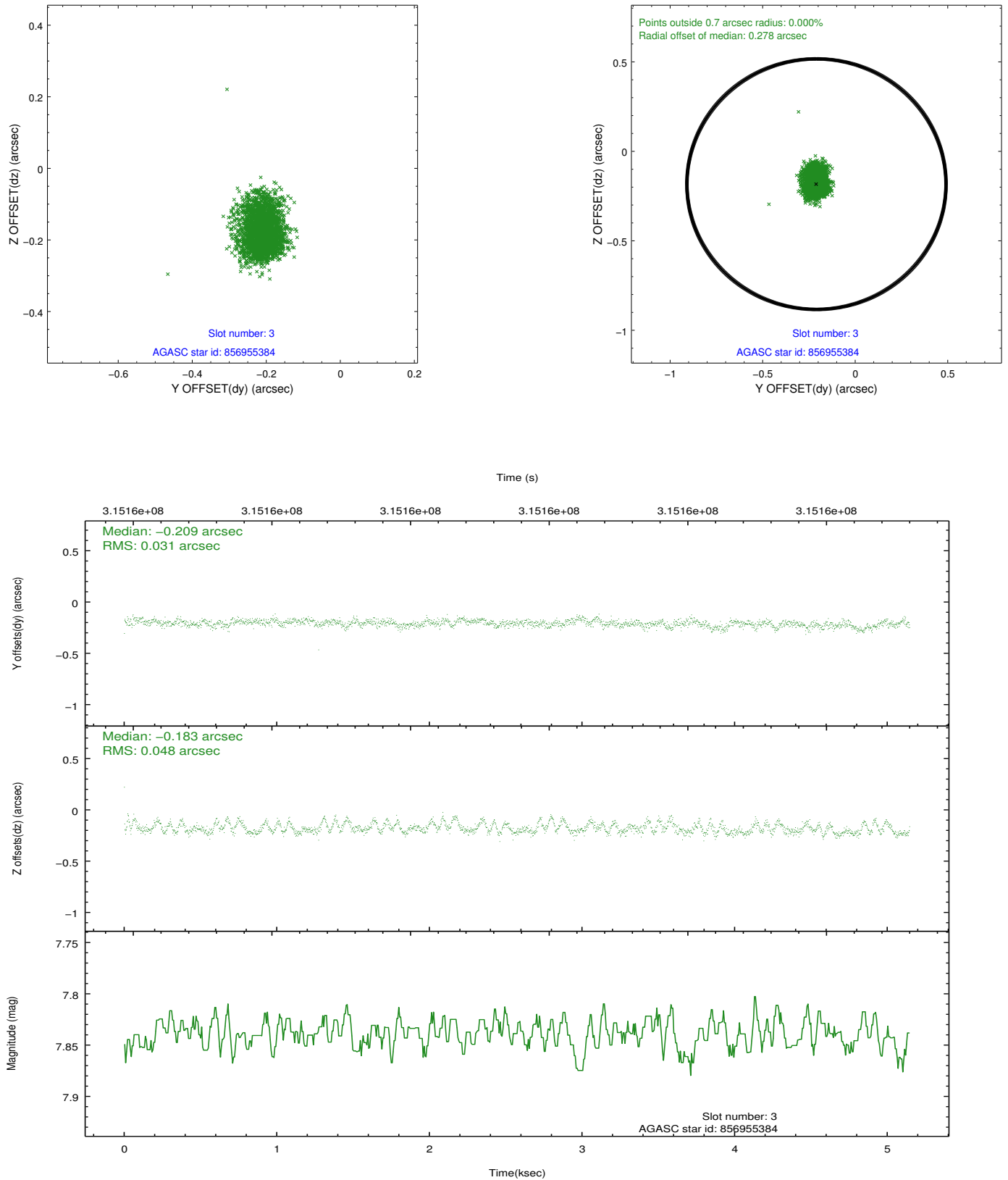


### Slot Statistics

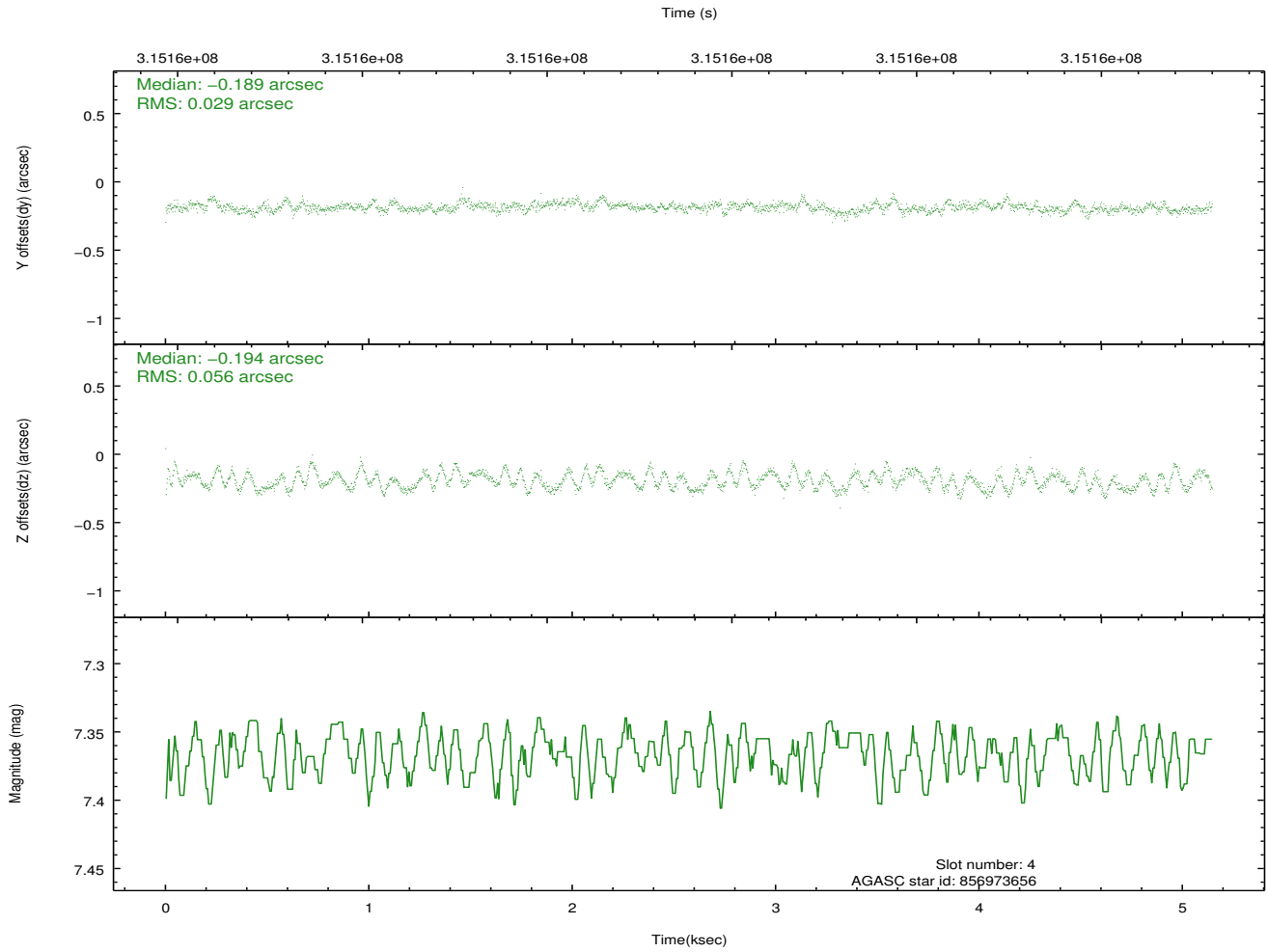
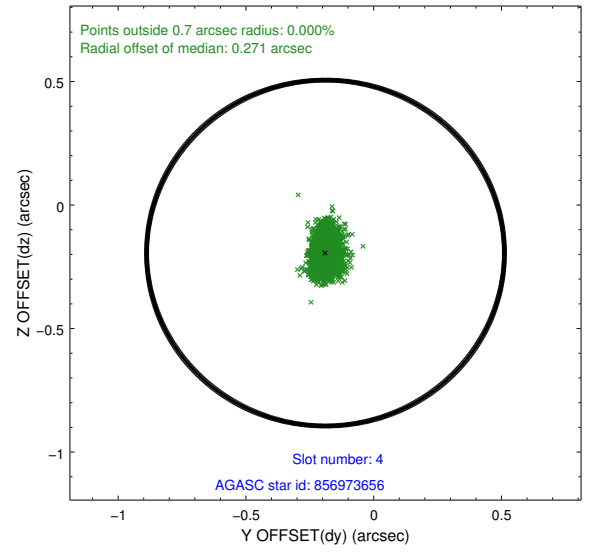
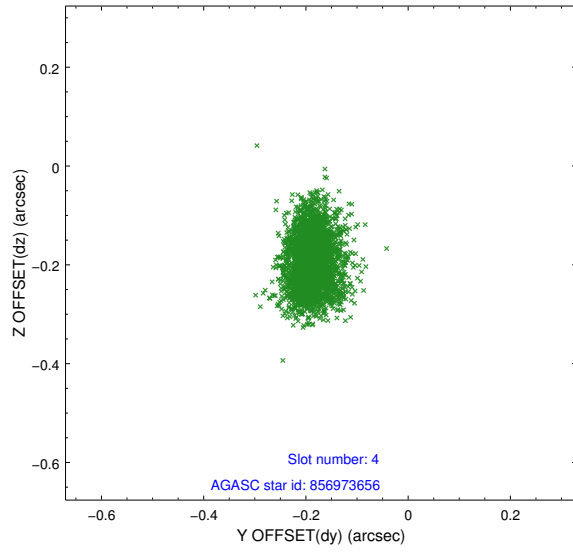
slot	status	id	mag	n_pts	med_dy	med_dz	dr1	dr2	ra	dec	mean_y	mean_z
0	FID	ACIS-I-1	7.23	1255	-0.024	0.018	0.012	0.024	0.000000	0.000000	926.36	-837.99
1	FID	ACIS-I-4	7.15	1255	0.192	0.022	0.010	0.019	0.000000	0.000000	2147.27	1061.23
2	FID	ACIS-I-5	7.21	1255	-0.267	0.030	0.010	0.019	0.000000	0.000000	-1820.37	1060.43
3	GUIDE	856955384	7.84	2511	-0.209	-0.183	0.058	0.099	112.023735	-23.519210	1155.50	1886.73
4	GUIDE	856973656	7.37	2511	-0.189	-0.194	0.068	0.110	111.981839	-23.489751	1060.88	2033.07
5	GUIDE	857473128	8.78	2507	0.195	0.086	0.083	0.133	111.667863	-24.462129	-1071.18	-928.51
6	GUIDE	857475336	8.52	2506	0.082	0.181	0.060	0.099	111.246046	-24.426336	-2335.72	-354.18
7	GUIDE	857495192	8.29	2509	0.117	0.106	0.057	0.094	111.381962	-24.699890	-2237.92	-1430.28

## 2.4 Star Slots

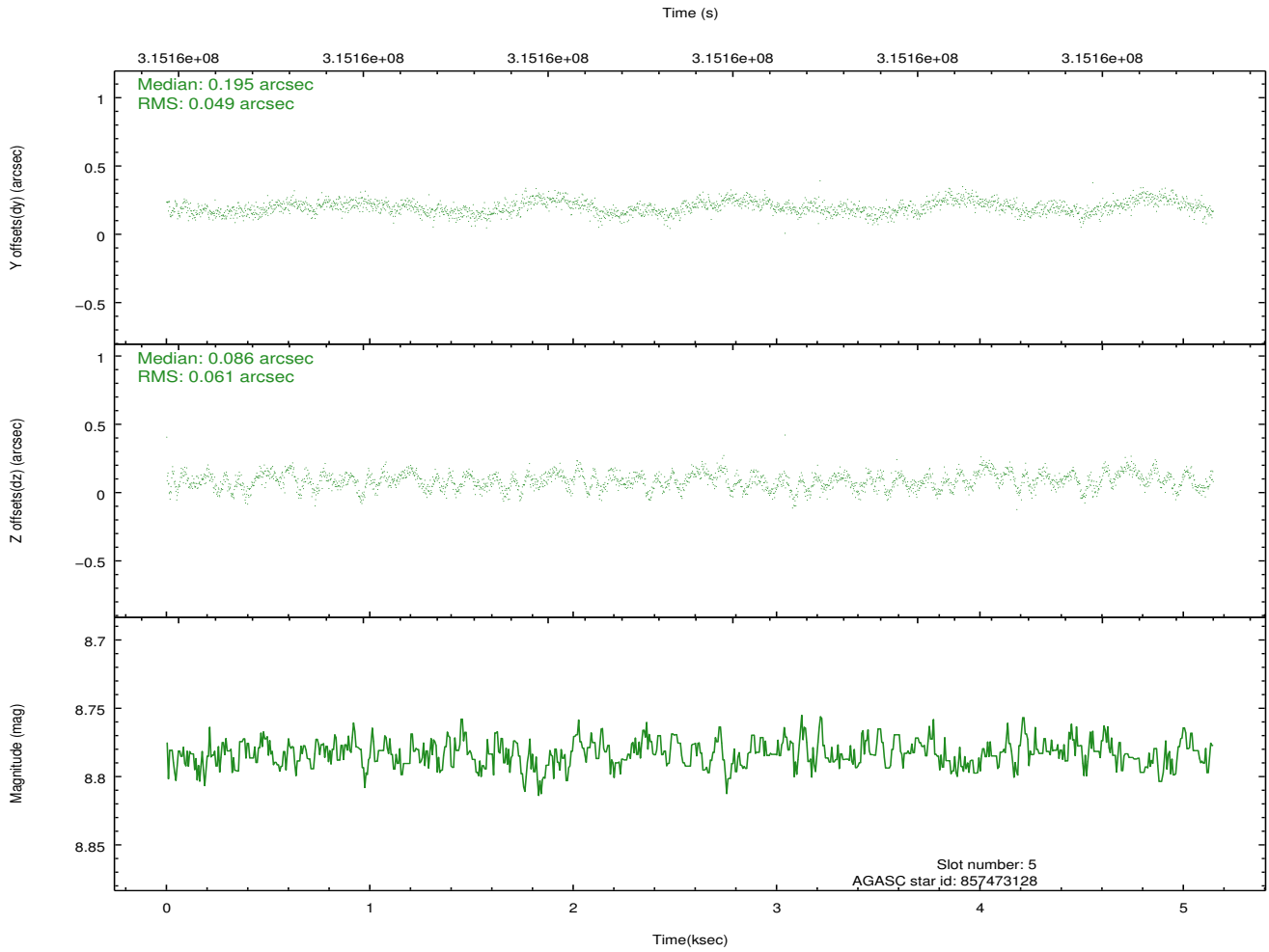
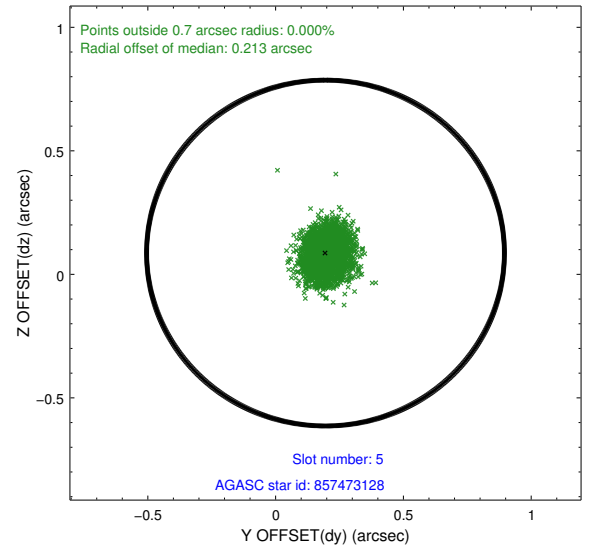
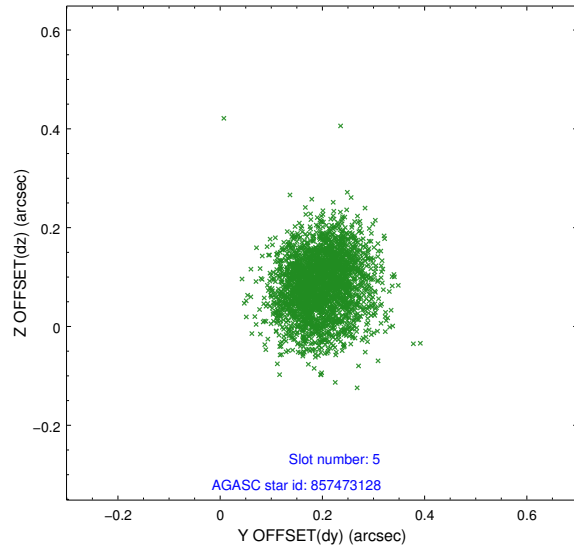
### 2.4.1 Slot 3



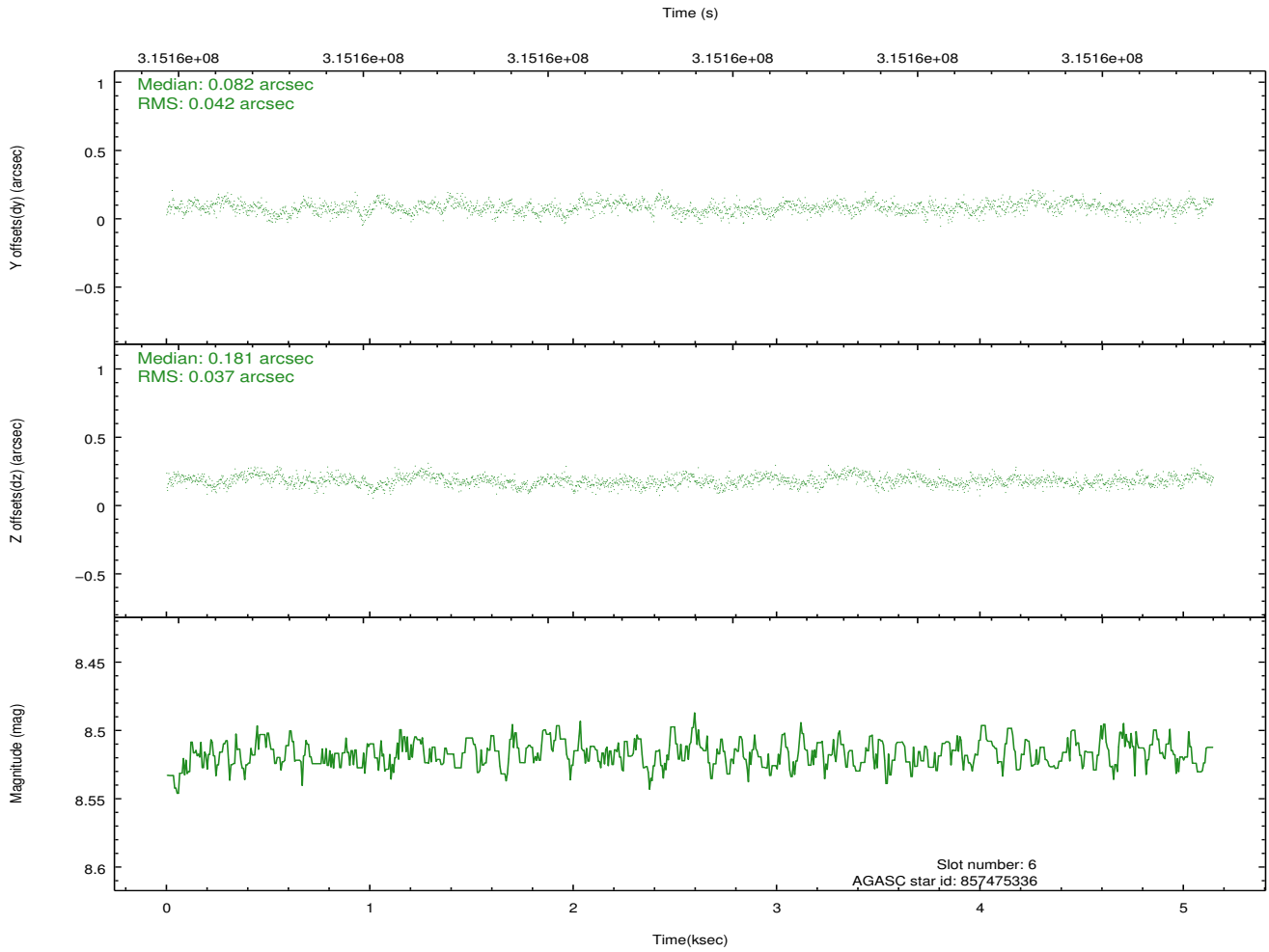
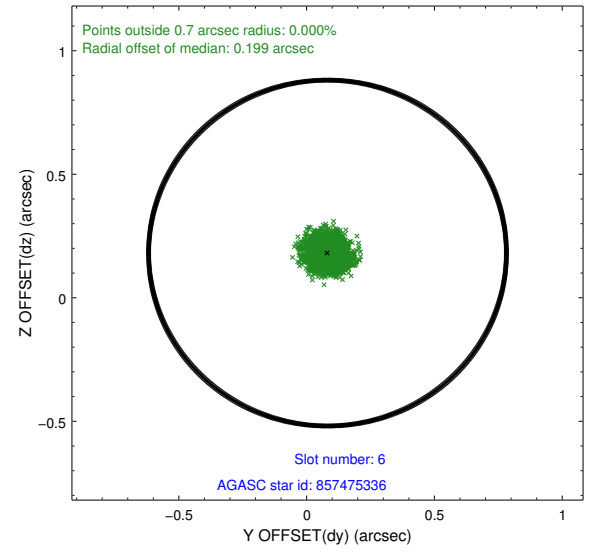
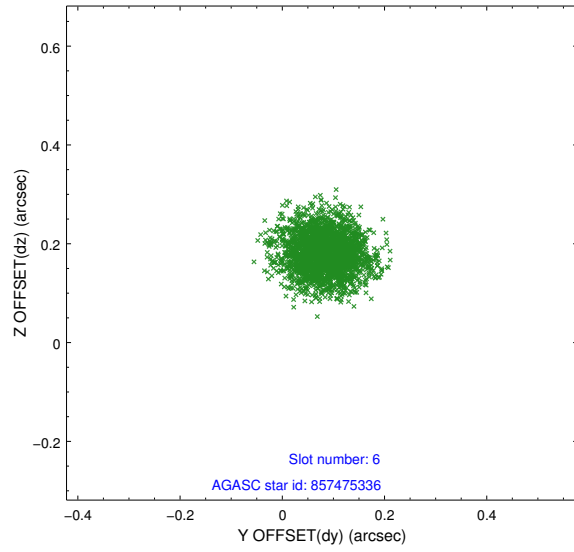
## 2.4.2 Slot 4



### 2.4.3 Slot 5

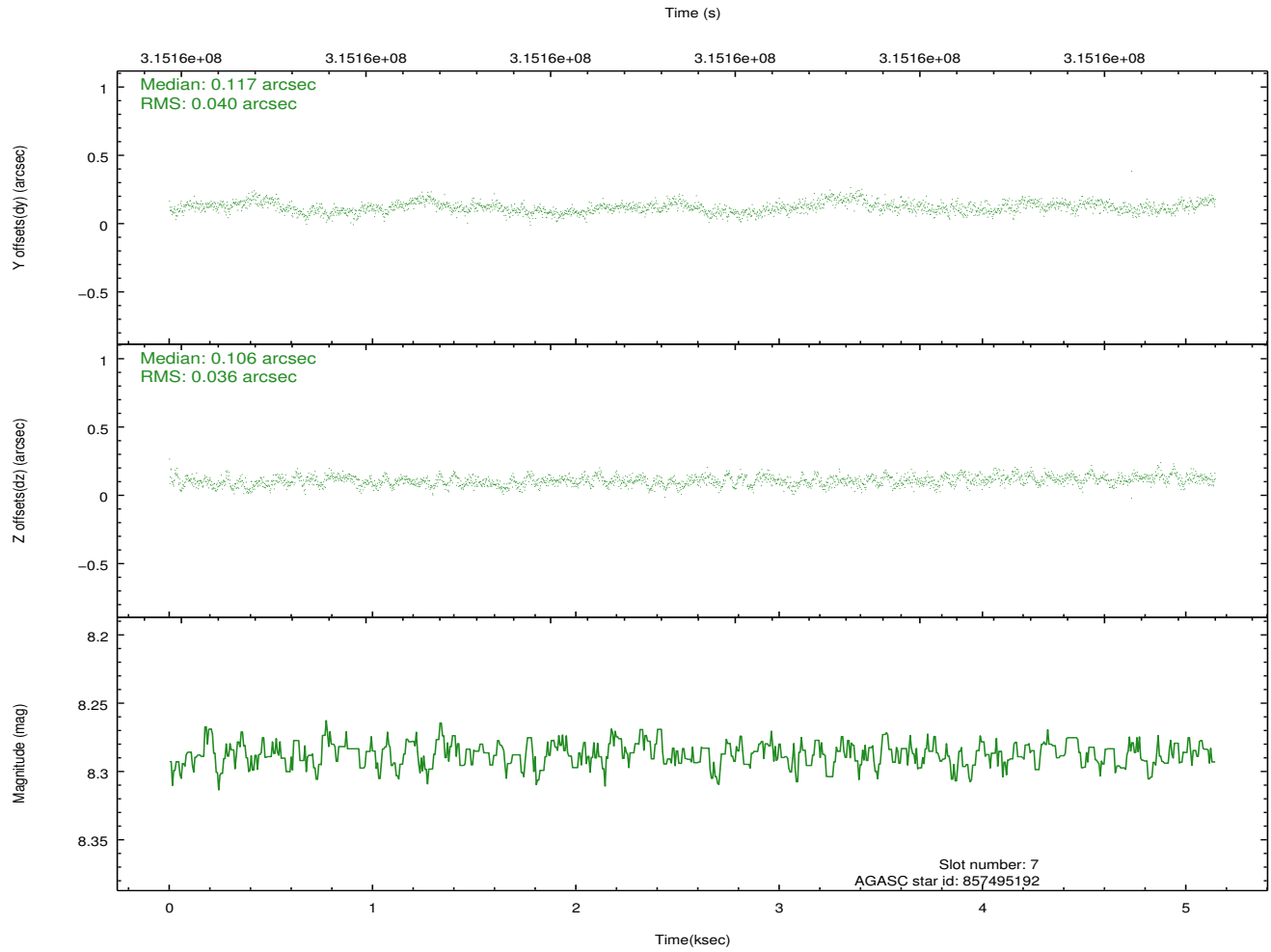
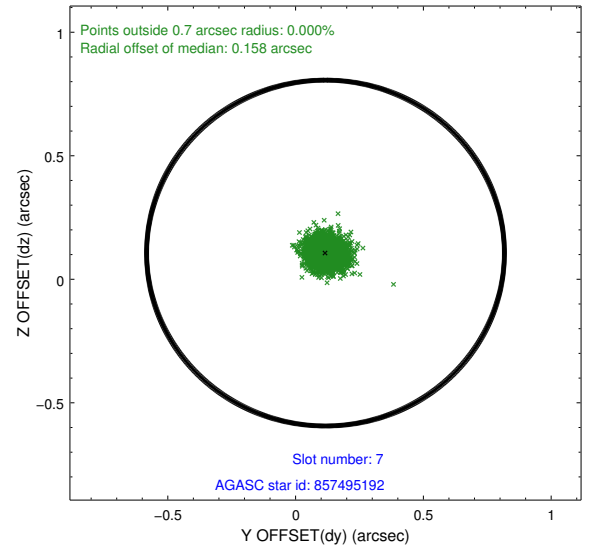
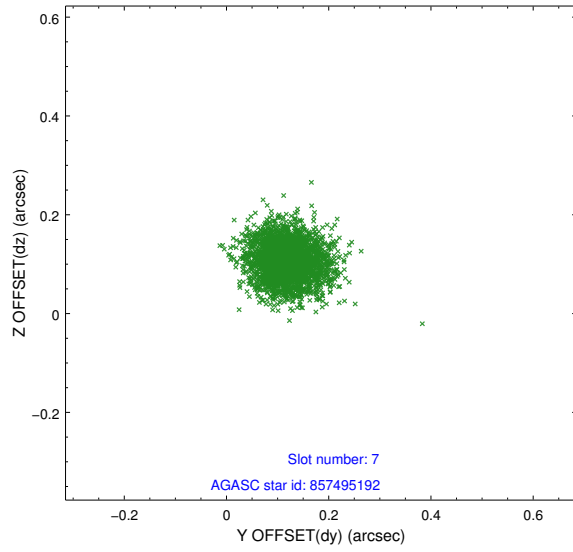


## 2.4.4 Slot 6



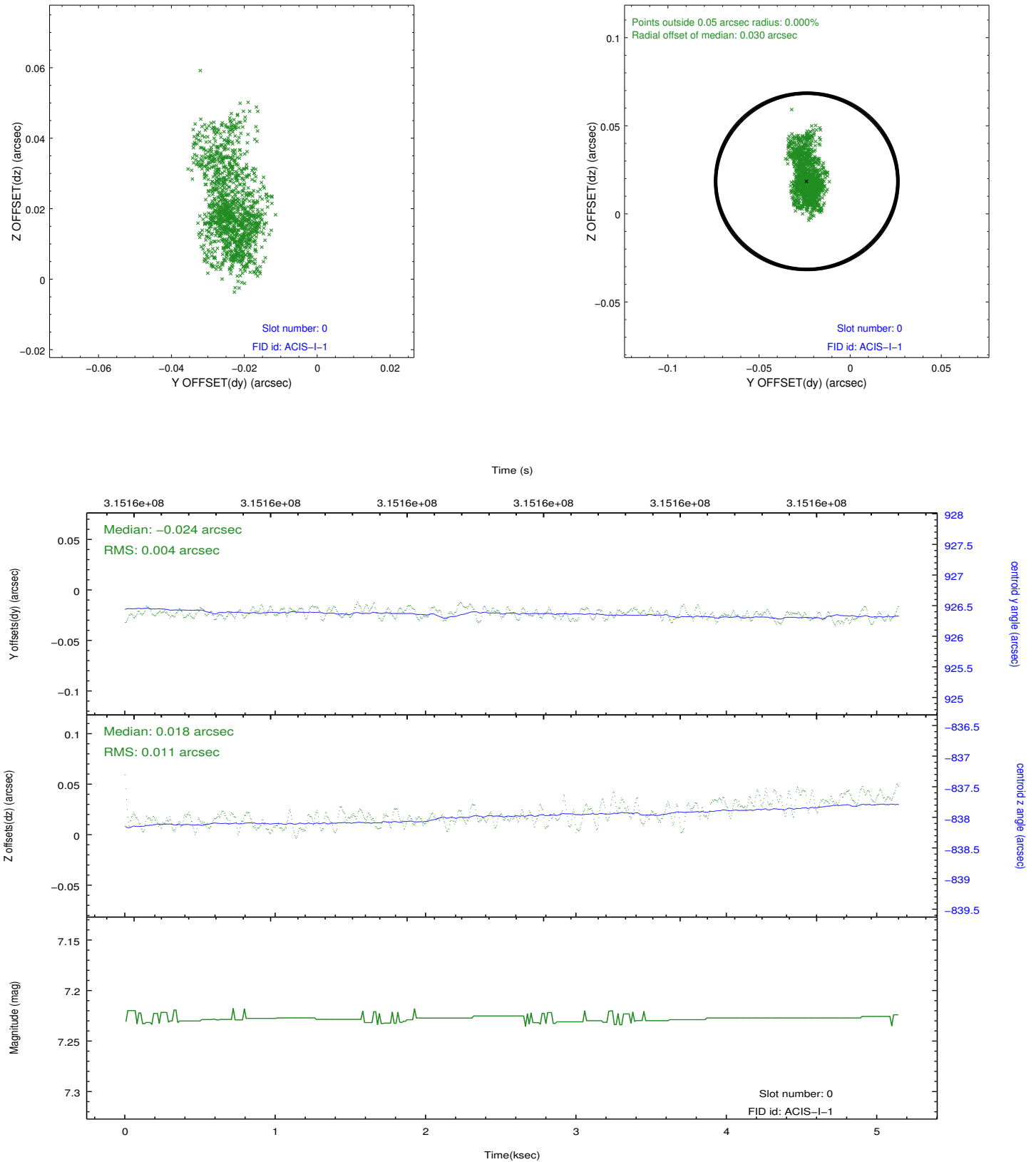


## 2.4.5 Slot 7

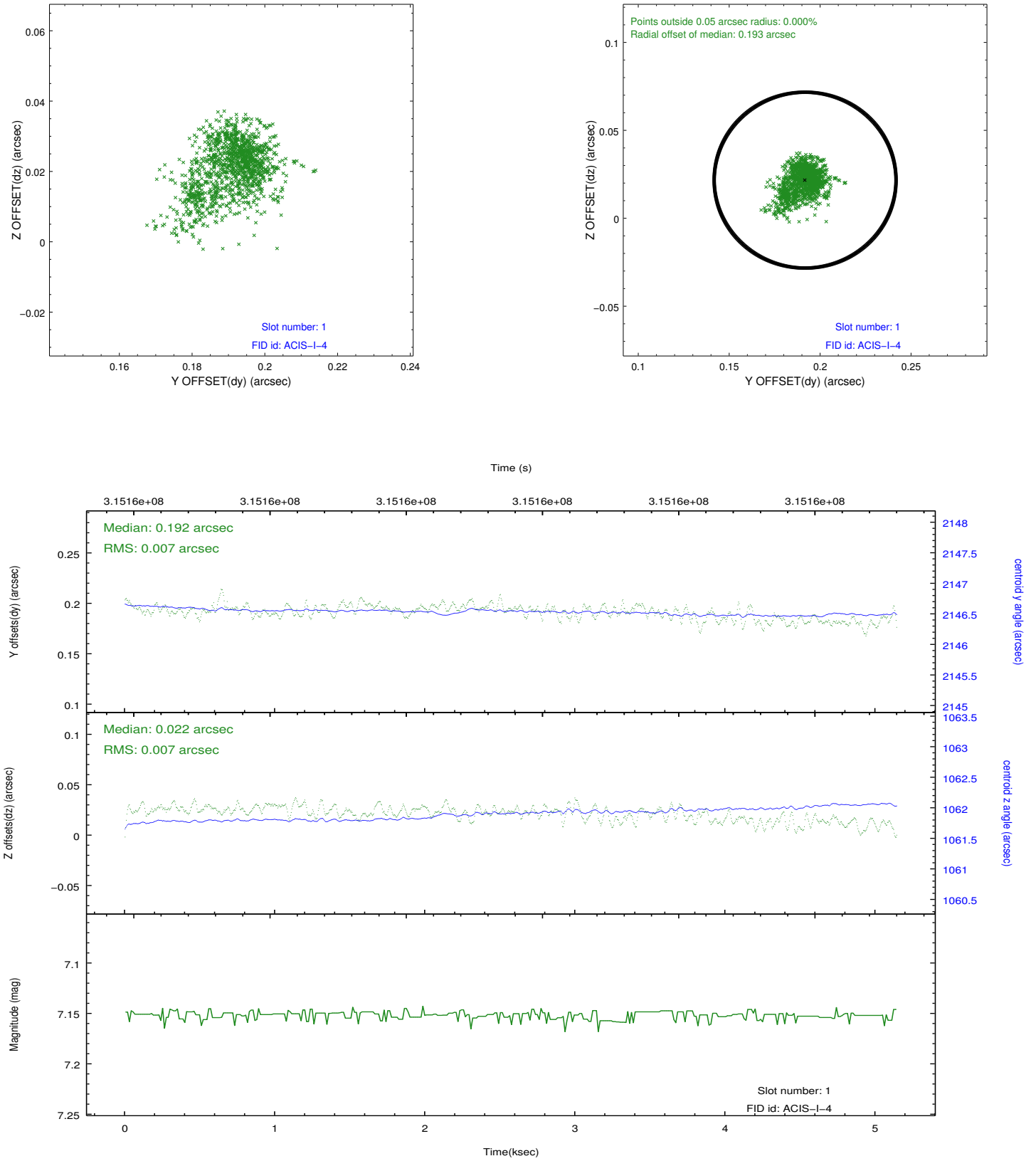


## 2.5 FID Slots

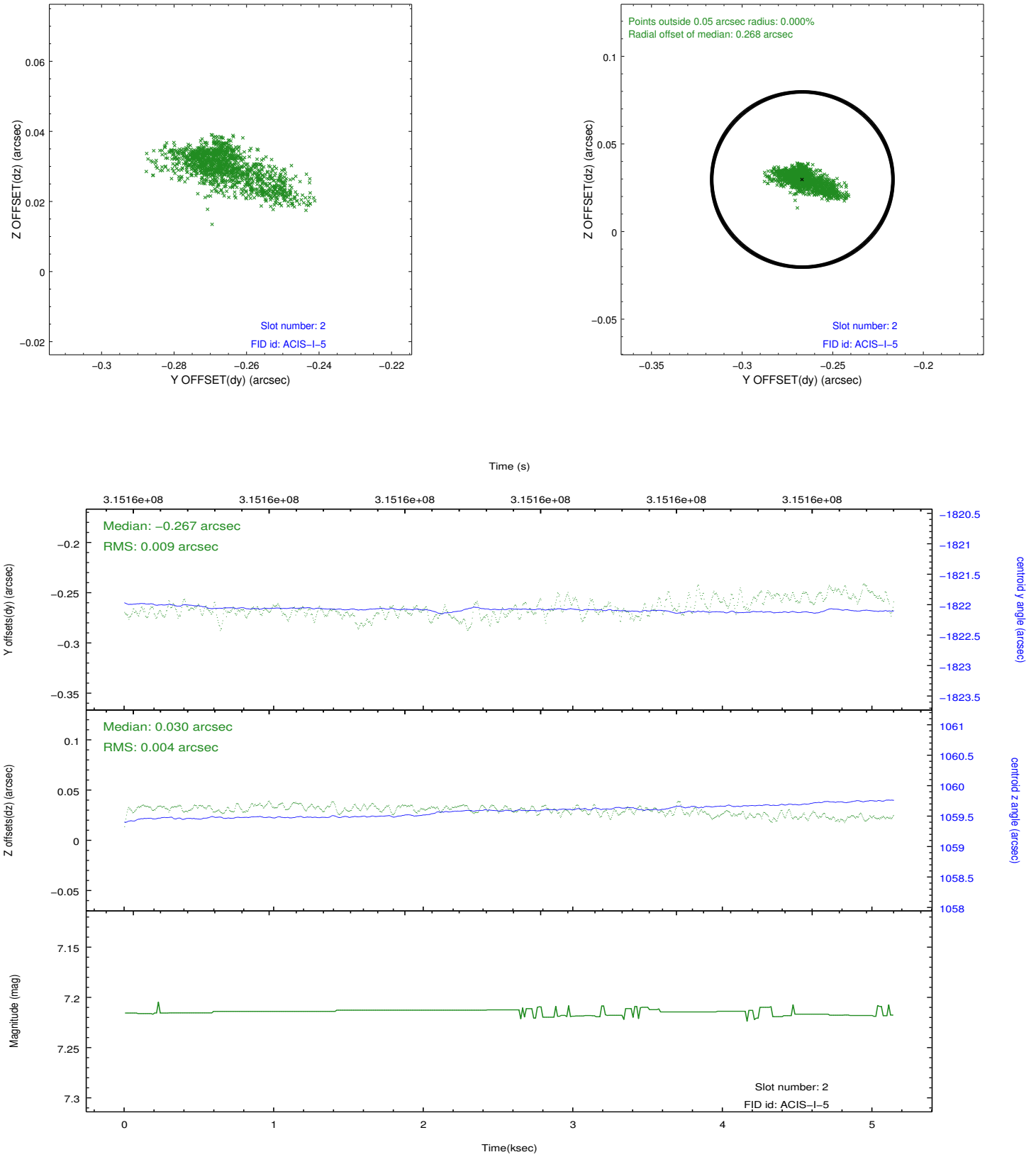
### 2.5.1 Slot 0



## 2.5.2 Slot 1



### 2.5.3 Slot 2



## **A Summary**

### **A.1 Status**

V&V Scientist	Jen Lauer
V&V Date (YYYY-MM-DD)	2012.05.08
V&V Edition	1
V&V Disposition and Status	OK
V&V Charge Time	5.13919998

### **A.2 Comments**