

# V&V Reference Report

## L2 ASCDS Version : 8.4.4

Observation 9105 - L2 Version 2  
Chandra X-Ray Center

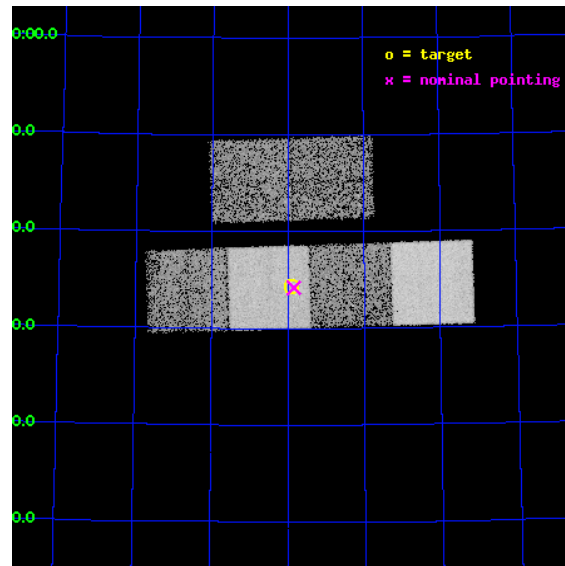
L2 Processing Date : May 17 2012

## Contents

<b>1</b>	<b>Front</b>	<b>2</b>
<b>2</b>	<b>OBI</b>	<b>3</b>
2.1	OBI . . . . .	3
2.1.1	Images . . . . .	3
2.1.2	Bias . . . . .	3
2.1.3	Parameters . . . . .	4
2.1.4	Events . . . . .	4
2.2	Compared Parameters . . . . .	5
2.3	Aspect . . . . .	6
2.4	Star Slots . . . . .	9
2.4.1	Slot 3 . . . . .	9
2.4.2	Slot 4 . . . . .	10
2.4.3	Slot 5 . . . . .	11
2.4.4	Slot 6 . . . . .	12
2.4.5	Slot 7 . . . . .	13
2.5	FID Slots . . . . .	14
2.5.1	Slot 0 . . . . .	14
2.5.2	Slot 1 . . . . .	15
2.5.3	Slot 2 . . . . .	16
<b>A</b>	<b>Summary</b>	<b>17</b>
A.1	Status . . . . .	17
A.2	Comments . . . . .	17

# 1 Front

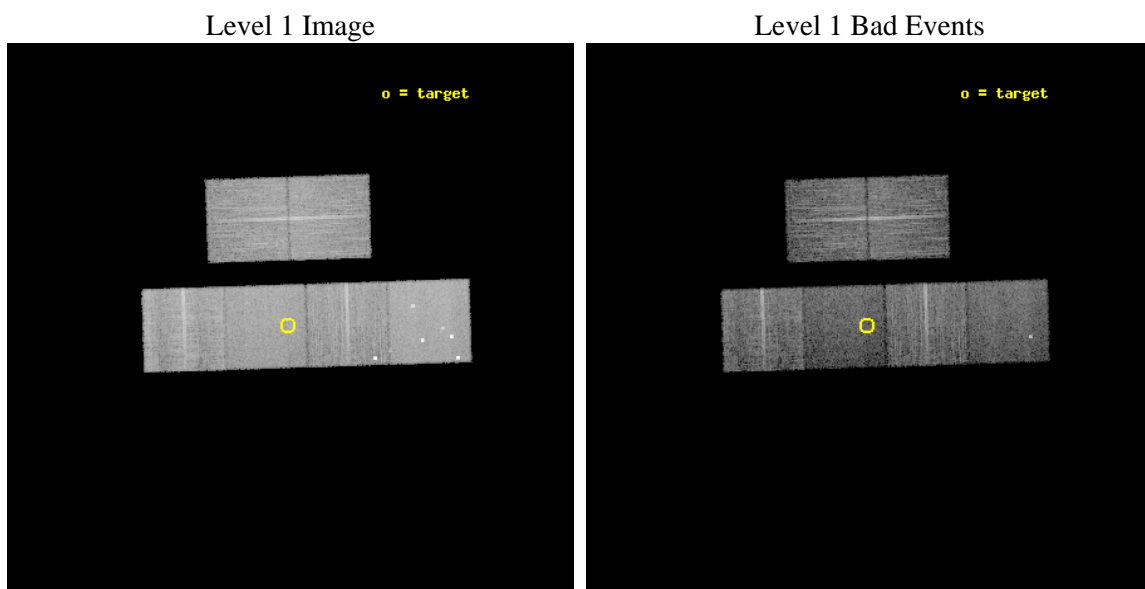
seq_num	500968	Sequence number
obs_id	9105	Observation id
title	Chandra Observations of New X-ray Supernovae	Proposal title
observer	Prof. David Pooley	Principal investigator
object	2008bo	Source name
dtcycle	0	&#160
cycle	P	events from which exps? Prim/Second/Both
ra_targ	274.97625	Observer's specified target RA [deg]
dec_targ	74.572472	Observer's specified target Dec [deg]
ra_nom	274.96040343281	Nominal RA [deg]
dec_nom	74.570053045589	Nominal Dec [deg]
roll_nom	178.15690541729	Nominal Roll [deg]
revision	2	Processing version of data
ontime	9427.1999649405	Sum of GTIs [s]
livetime	9307.8270826061	Livetime [s]
ontime2	9427.1999649405	Sum of GTIs [s]
ontime3	9423.958984673	Sum of GTIs [s]
ontime5	9427.1999649405	Sum of GTIs [s]
ontime6	9427.1999649405	Sum of GTIs [s]
ontime7	9427.1999649405	Sum of GTIs [s]
ontime8	9427.1999649405	Sum of GTIs [s]
l2events	112555	Number of level 2 events



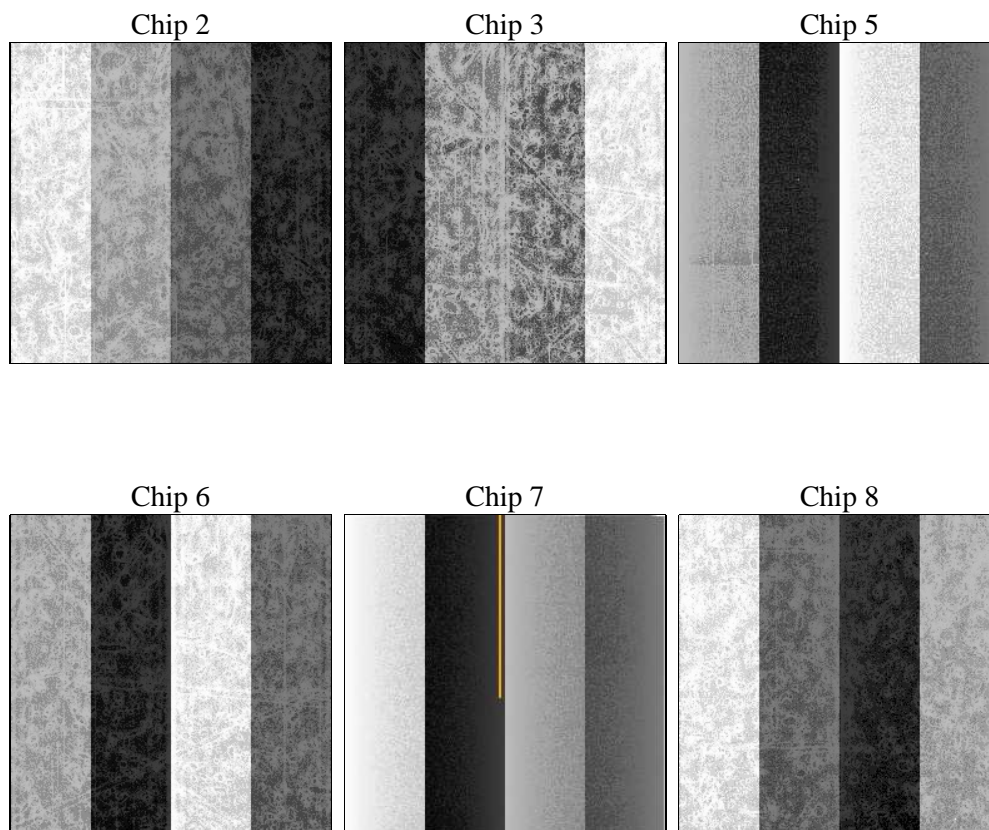
## 2 OBI

### 2.1 OBI

#### 2.1.1 Images



#### 2.1.2 Bias



### 2.1.3 Parameters

obi_num	0	Obi number	sched_exp_time	9250.000000	[s] Scheduled observation exposure time
ascdsver	8.4.4	Processing system revision	ontime	9427.1999649405	Sum of GTIs [s]
caldsver	4.4.9	&#160	ontime2	9427.1999649405	Sum of GTIs [s]
date	2012-05-17T02:26:51	Date and time of file creation	ontime3	9423.958984673	Sum of GTIs [s]
revision	2	Processing version of data	ontime5	9427.1999649405	Sum of GTIs [s]
			ontime6	9427.1999649405	Sum of GTIs [s]
			ontime7	9427.1999649405	Sum of GTIs [s]
			ontime8	9427.1999649405	Sum of GTIs [s]
			l1events	518847	Number of level 1 events

### 2.1.4 Events

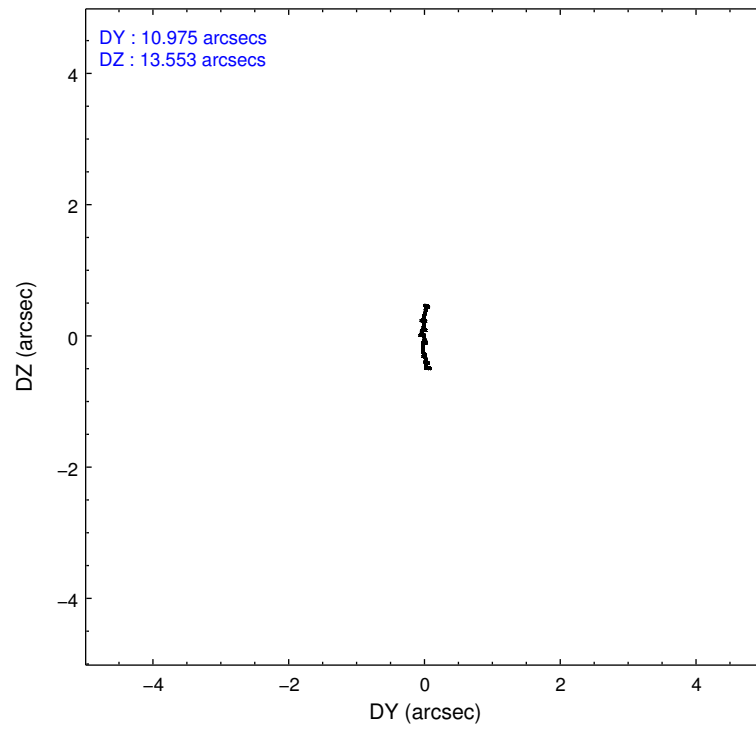
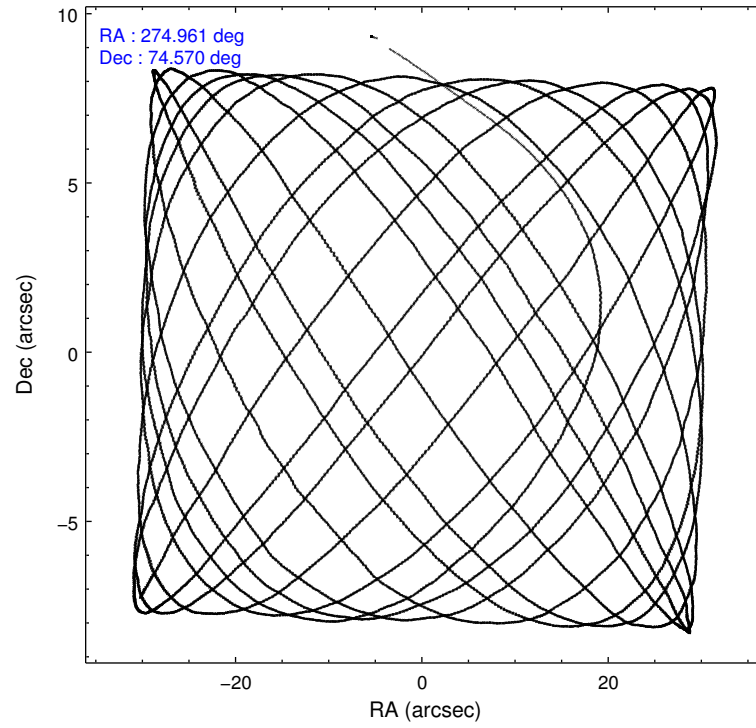
	ccd 2	ccd 3	ccd 5	ccd 6	ccd 7	ccd 8		ccd 2	ccd 3	ccd 5	ccd 6	ccd 7	ccd 8
level 1 events	78238	73633	111182	80114	83859	91821	grade 0 events	2627	2617	10819	5547	3784	6476
rejected events	70877	66458	53159	69552	45282	69788		3%	3%	9%	6%	4%	7%
rejected %	90%	90%	47%	86%	53%	76%	grade 1 events	39	44	722	63	108	67
								0%	0%	0%	0%	0%	0%
							grade 2 events	1773	1572	16131	1781	7955	5204
								2%	2%	14%	2%	9%	5%
							grade 3 events	766	809	2059	847	3657	2357
								0%	1%	1%	1%	4%	2%
							grade 4 events	824	779	2025	837	3510	2238
								1%	1%	1%	1%	4%	2%
							grade 5 events	2490	2914	8178	3032	8922	4319
								3%	3%	7%	3%	10%	4%
							grade 6 events	1404	1431	27224	1584	19864	5883
								1%	1%	24%	1%	23%	6%
							grade 7 events	68315	63467	44024	66423	36059	65277
								87%	86%	39%	82%	42%	71%

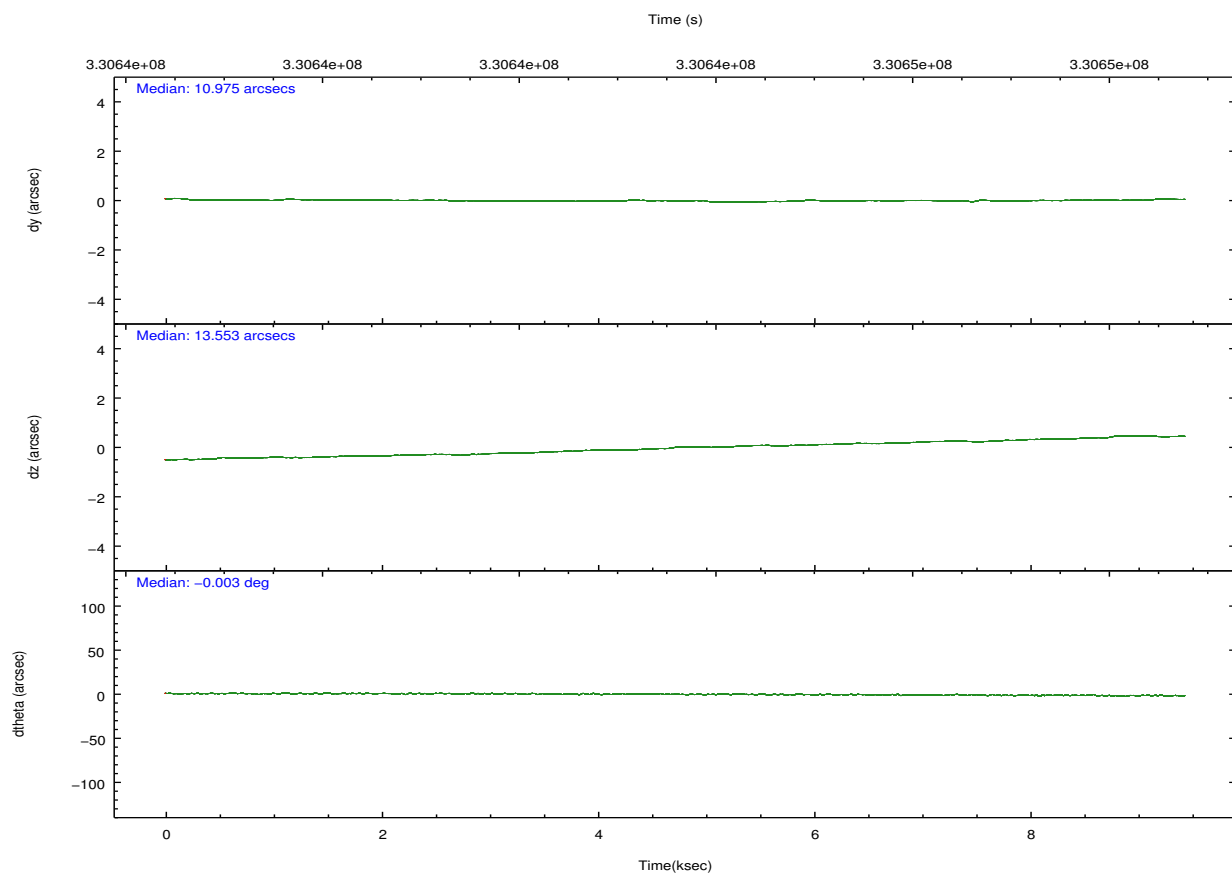
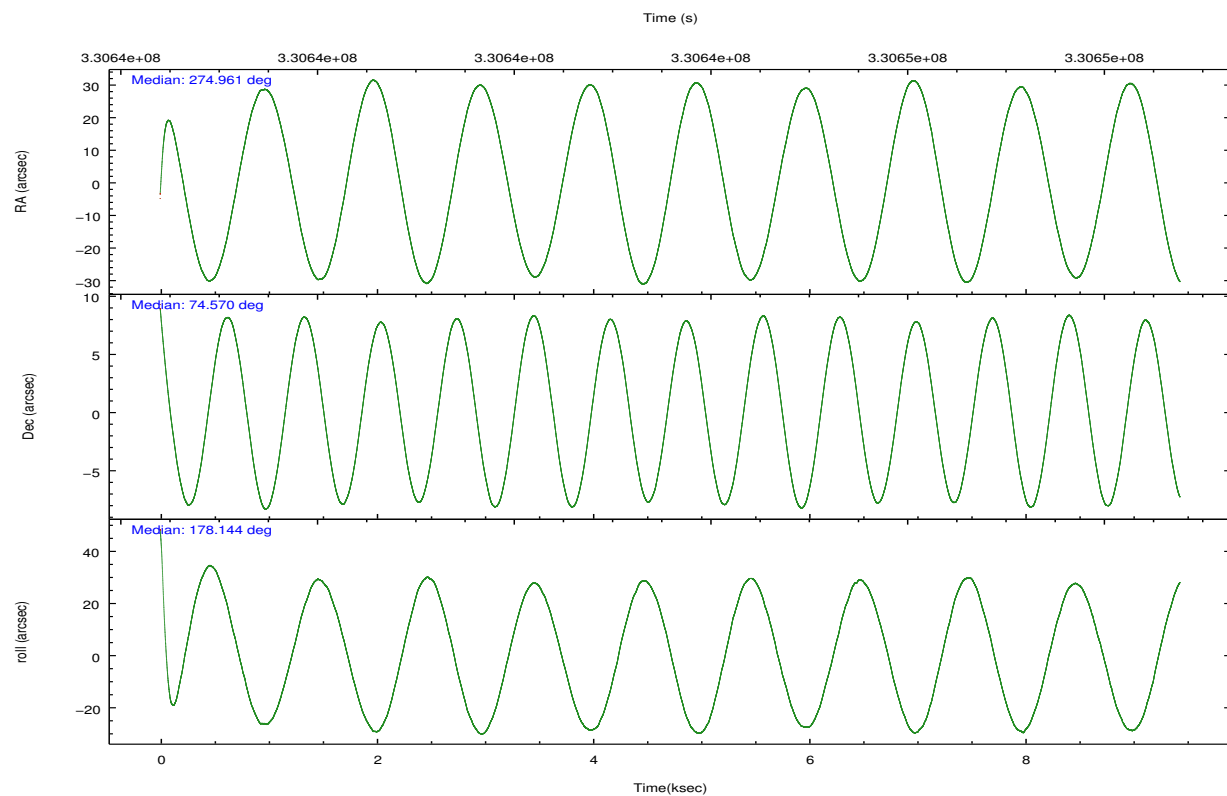


## 2.2 Compared Parameters

Parameter	Planned	Actual	Parameter	Planned	Actual
Instrument	ACIS	ACIS	Obspar format version number	7	7
Detector	ACIS-235678	ACIS-235678	Obspar file type	PREDICTED	ACTUAL
Grating	NONE	NONE	Obspar update status	NONE	UPDATED
Data mode	VFAINT	VFAINT	CCD I0 on	N	N
Observation mode	POINTING	POINTING	CCD I1 on	N	N
[deg] Pointing RA	275.050430	274.96040343281	CCD I2 on	O1	Y
[deg] Pointing Dec	74.583259	74.57005304558919	CCD I3 on	O2	Y
[deg] Pointing Roll	177.913427	178.1569054172891	CCD S0 on	N	N
[mm] SIM focus pos	-0.684267	-0.6828225247311905	CCD S1 on	Y	Y
[mm] SIM defocus	0	0.001444936568705701	CCD S2 on	Y	Y
[mm] SIM translation stage pos	-190.132523	-190.1400660498719	CCD S3 on	Y	Y
[mm] SIM translation stage offset	0	0.00754346686406393	CCD S4 on	Y	Y
[s] Observation start time (MET)	330639054.184000	330637962.93778	CCD S5 on	N	N
Observation start date	2008-06-23T20:09:49	2008-06-23T19:52:42	Number of optional ACIS chips dropped	0	0
[s] Observation end time (MET)	330648304.184000	330648854.07581	On-chip summing requested	N	N
Observation end date	2008-06-23T22:43:59	2008-06-23T22:54:14	Subarray requested	NONE	NONE
Read mode	TIMED	TIMED	Alternating exposures requested	N	N
			[s] Primary exposure time	0.000000	3.2

## 2.3 Aspect



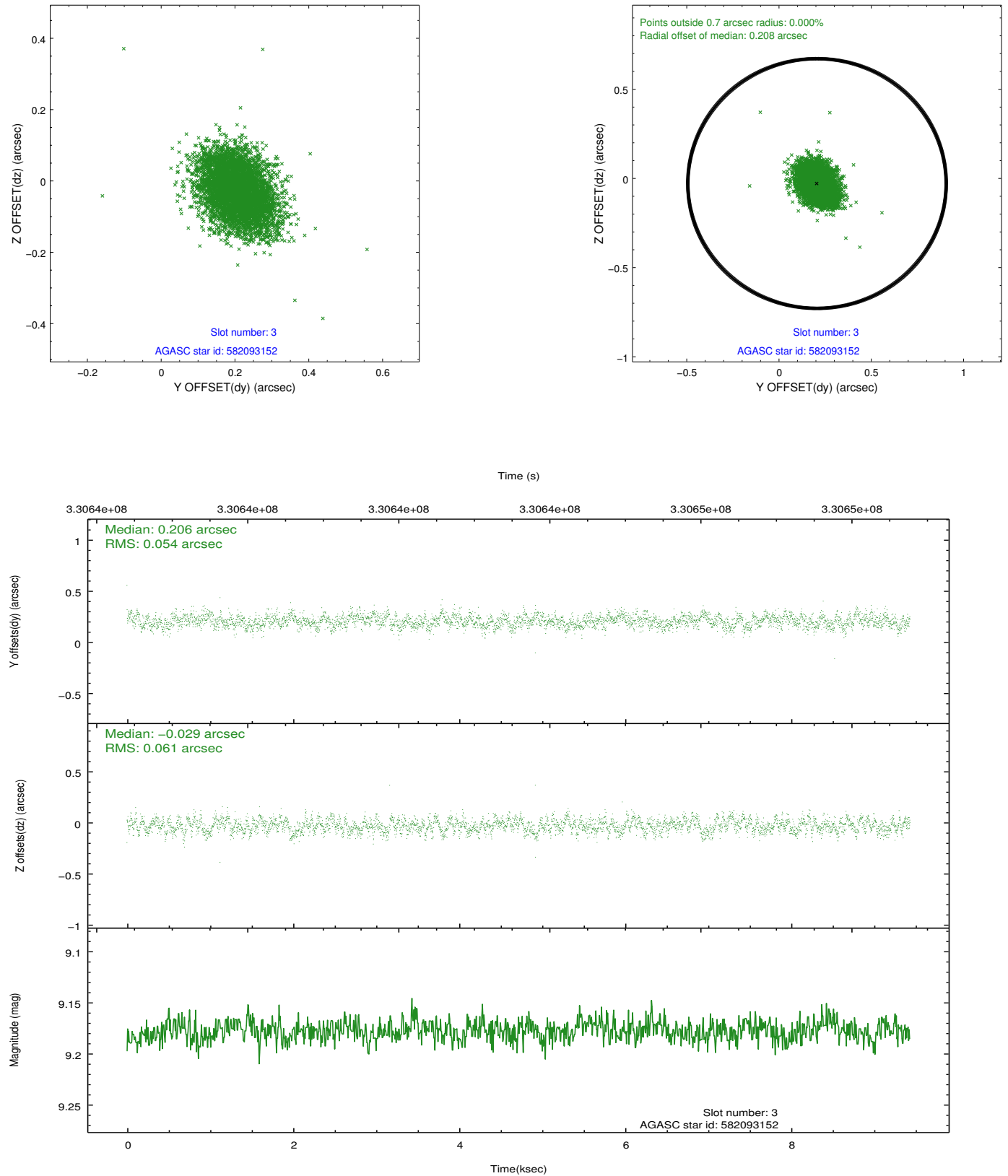


### Slot Statistics

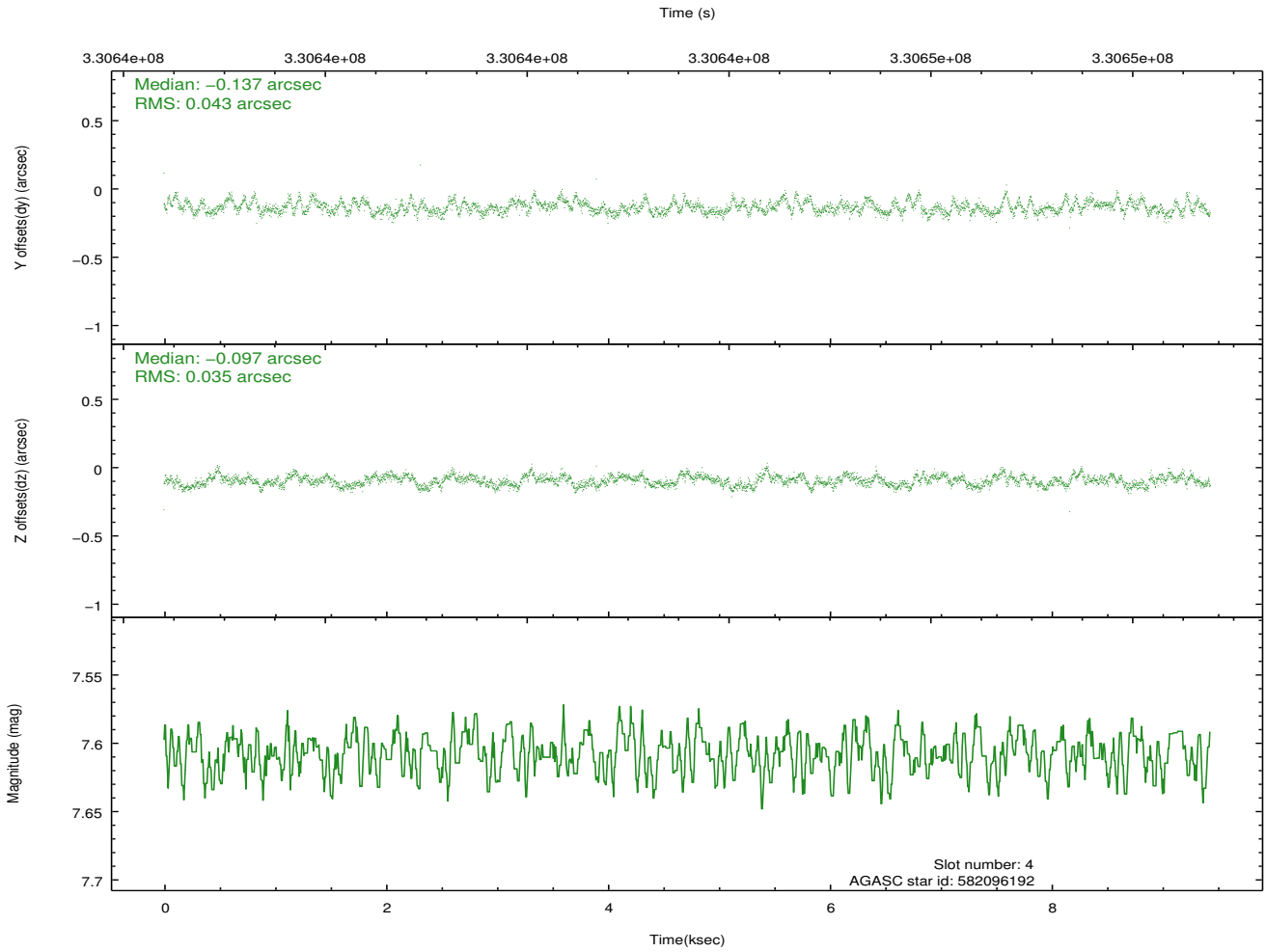
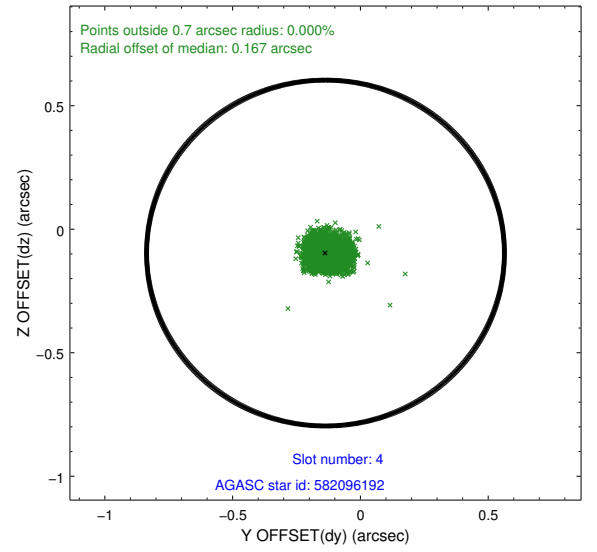
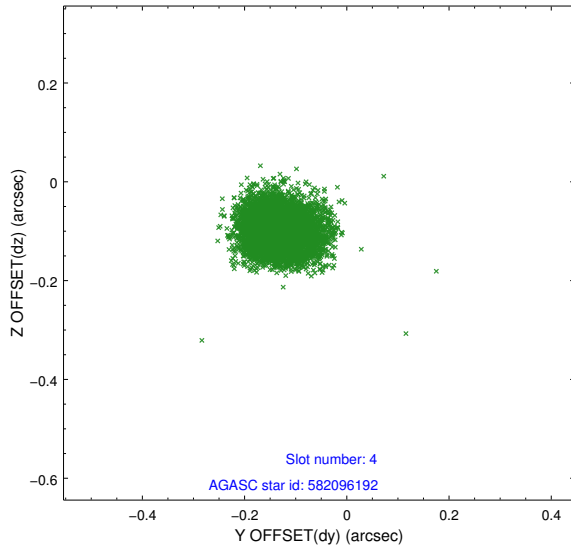
slot	status	id	mag	n_pts	med_dy	med_dz	dr1	dr2	ra	dec	mean_y	mean_z
0	FID	ACIS-S-2	6.86	2302	-0.029	-0.000	0.009	0.014	0.000000	0.000000	-763.88	-1734.85
1	FID	ACIS-S-4	6.95	2302	0.076	0.014	0.008	0.015	0.000000	0.000000	2149.26	173.03
2	FID	ACIS-S-5	6.97	2302	-0.079	-0.005	0.007	0.011	0.000000	0.000000	-1816.02	167.37
3	GUIDE	582093152	9.18	4597	0.206	-0.029	0.085	0.139	275.879645	74.167964	-867.84	1458.33
4	GUIDE	582096192	7.61	4600	-0.137	-0.097	0.058	0.095	273.025493	74.334045	1935.18	935.20
5	GUIDE	582097912	9.11	4602	-0.011	0.038	0.090	0.141	272.764567	74.001688	2191.74	2131.88
6	GUIDE	582098136	8.27	4600	-0.073	-0.068	0.057	0.091	272.884914	74.391481	2072.54	728.73
7	GUIDE	599008944	9.16	4599	0.015	0.155	0.096	0.154	273.127309	75.176704	1849.52	-2098.26

## 2.4 Star Slots

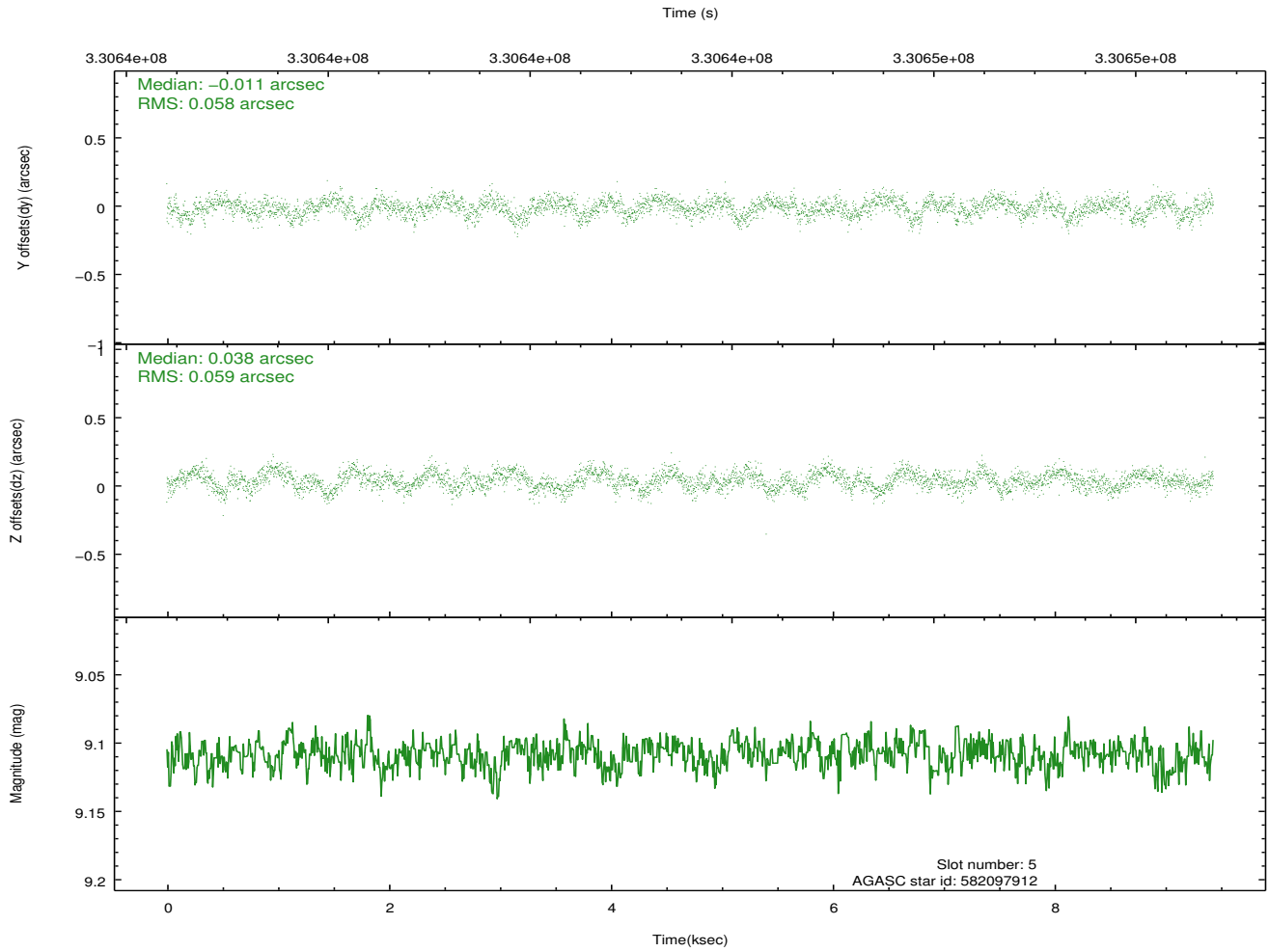
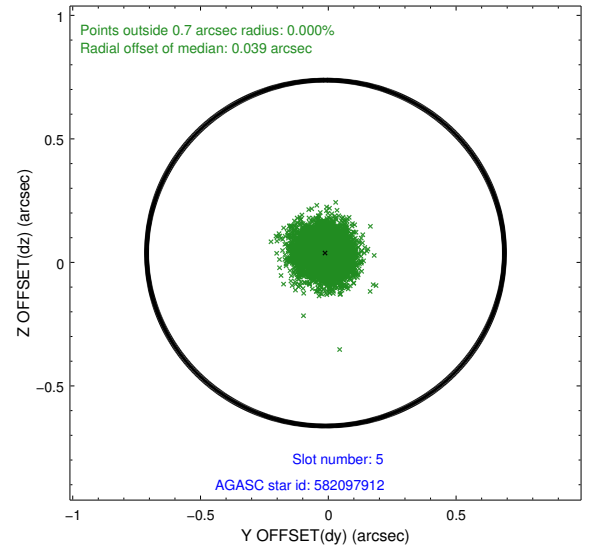
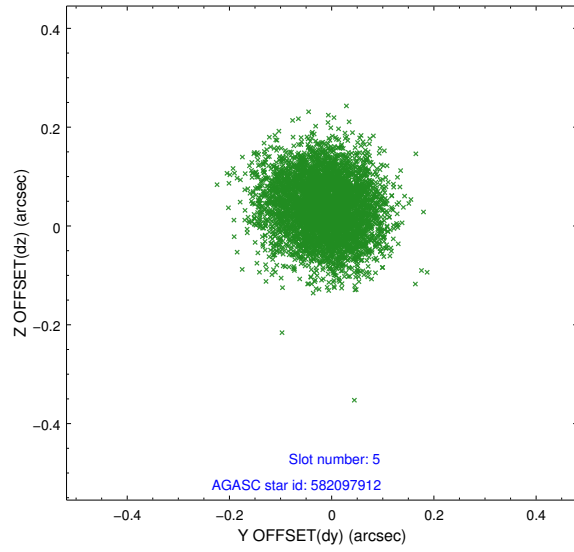
### 2.4.1 Slot 3



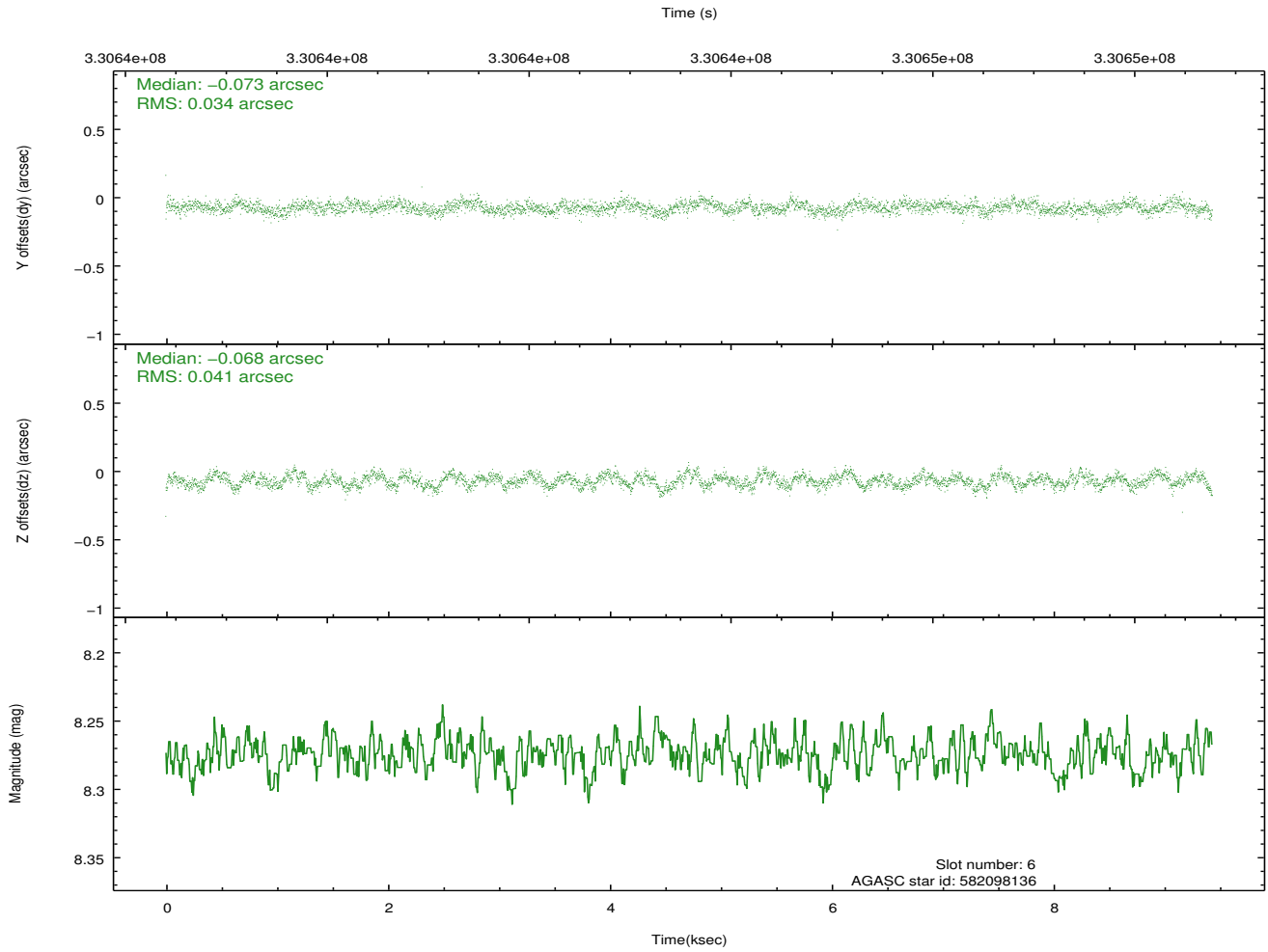
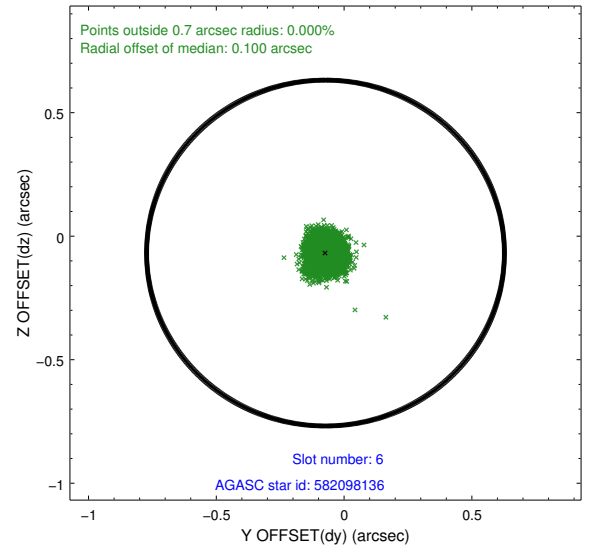
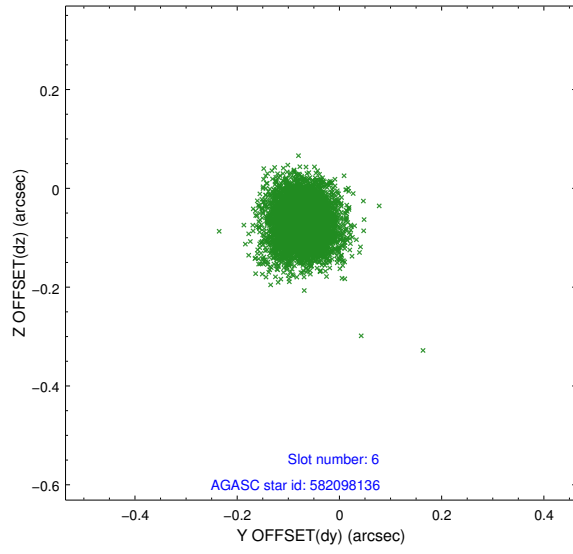
## 2.4.2 Slot 4



### 2.4.3 Slot 5

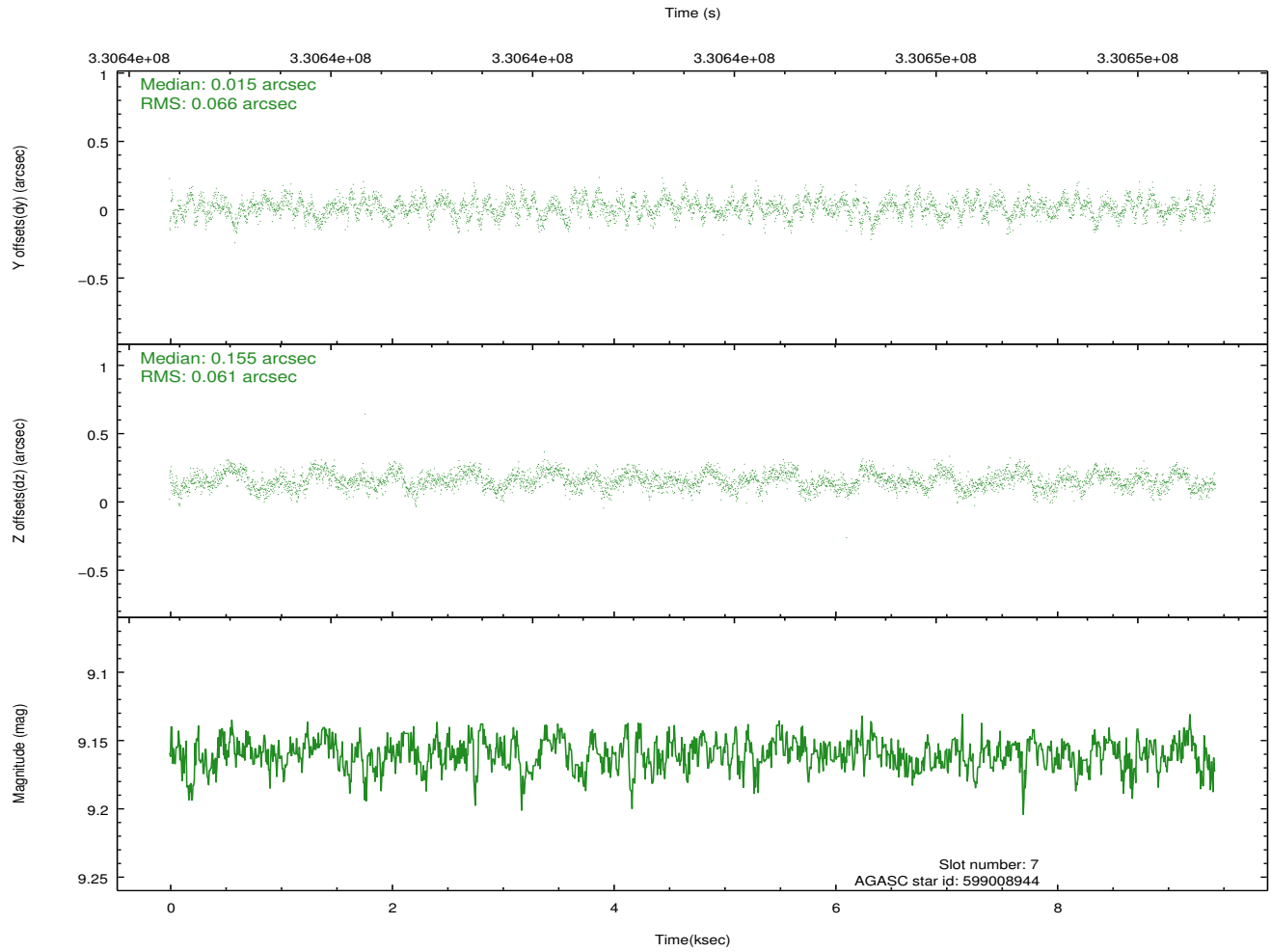
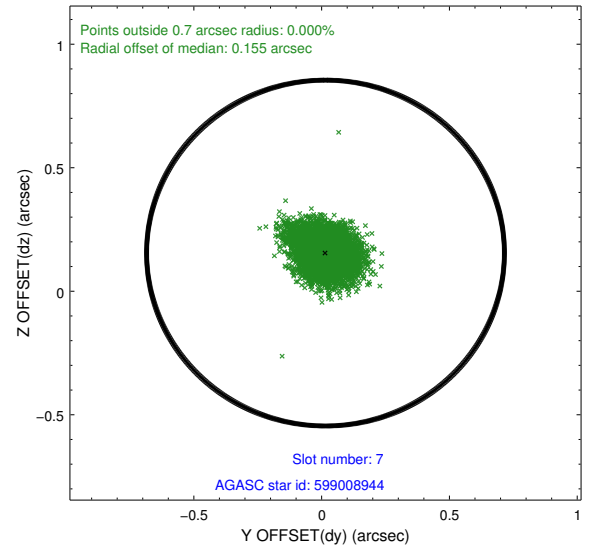
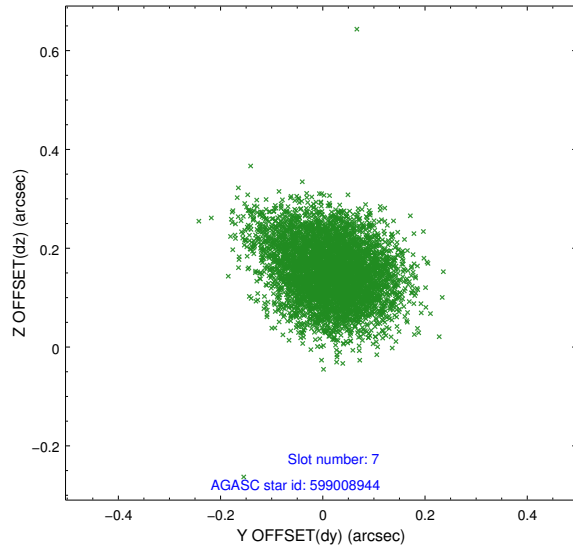


## 2.4.4 Slot 6



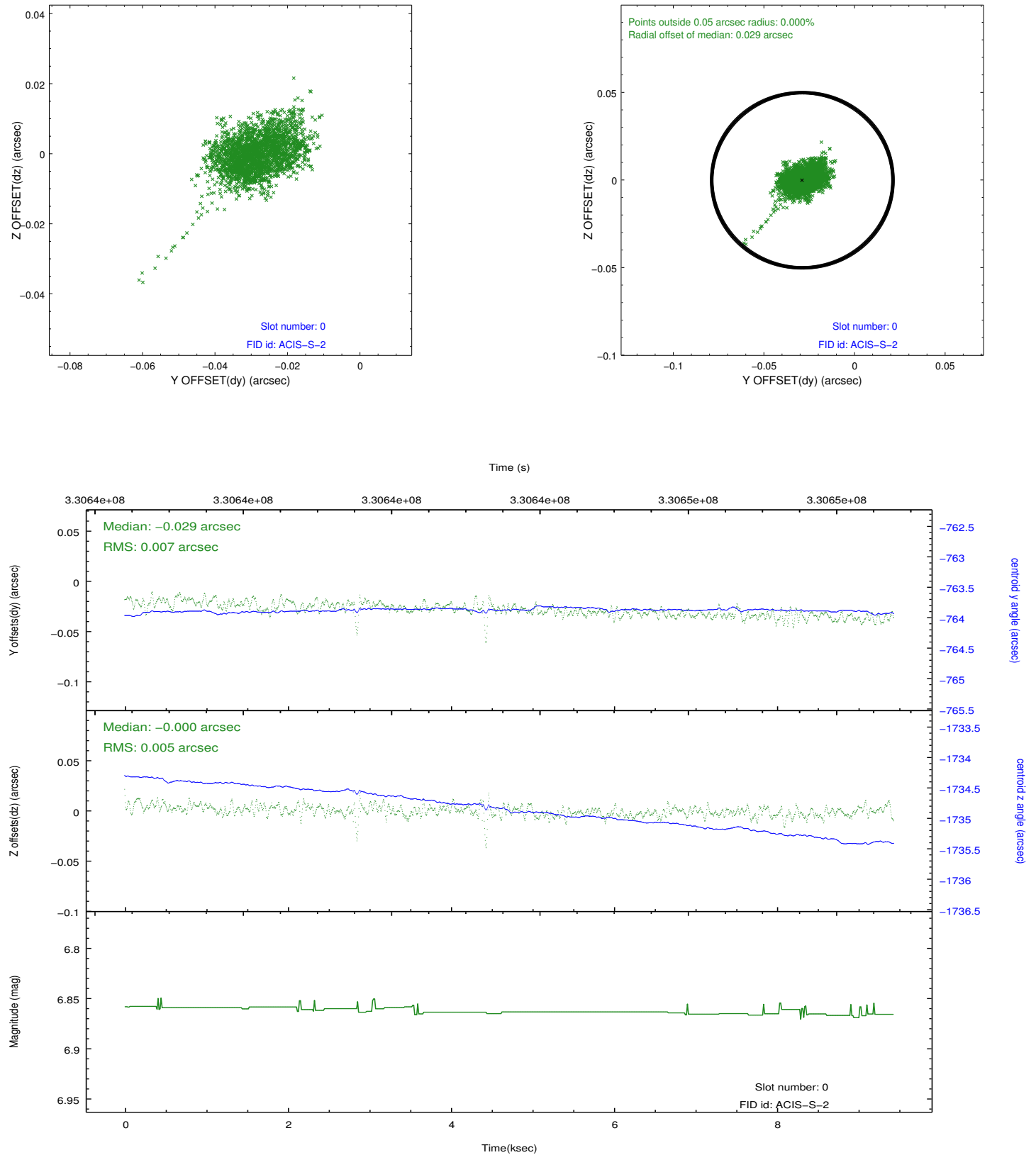


## 2.4.5 Slot 7

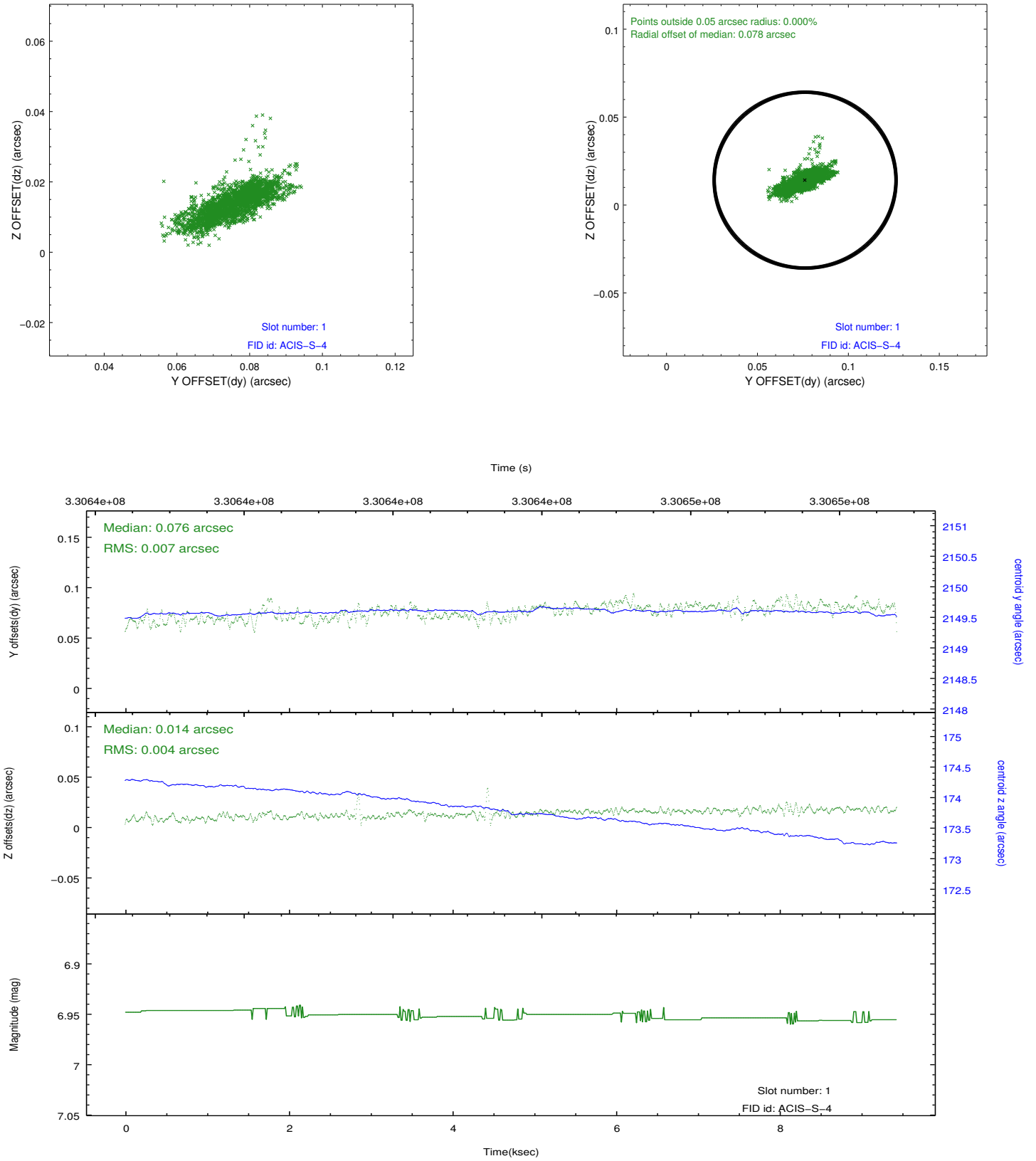


## 2.5 FID Slots

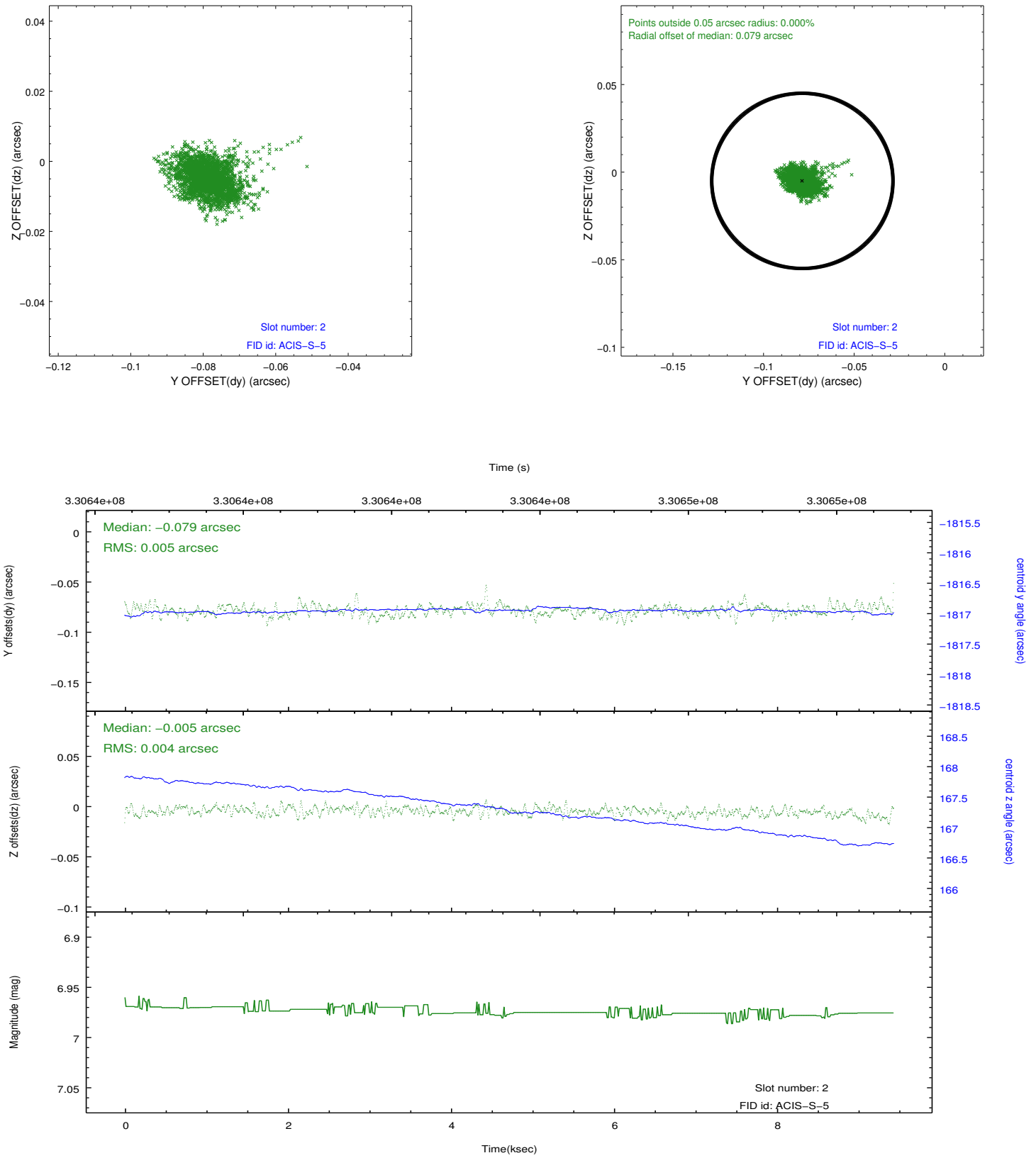
### 2.5.1 Slot 0



## 2.5.2 Slot 1



### 2.5.3 Slot 2



## A Summary

### A.1 Status

V&V Scientist	Jen Lauer
V&V Date (YYYY-MM-DD)	2012.05.22
V&V Edition	1
V&V Disposition and Status	OK
V&V Charge Time	9.42719996

### A.2 Comments