

# V&V Reference Report

## L2 ASCDS Version : 7.6.7.1

Observation 7195 - L2 Version 002  
Chandra X-Ray Center

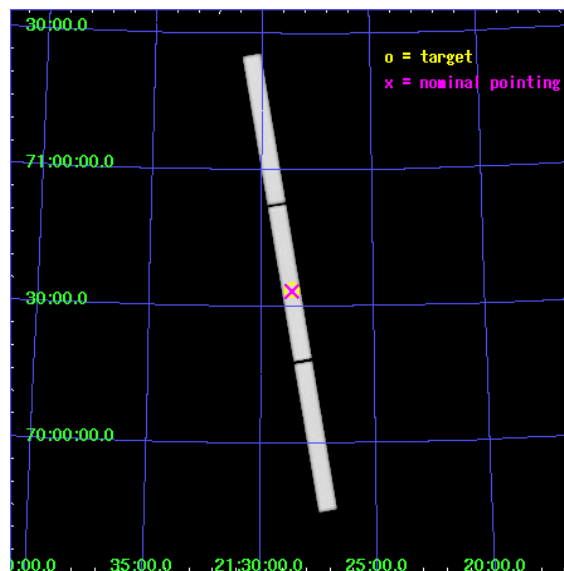
L2 Processing Date : Apr 4 2006

## Contents

<b>1</b>	<b>Front</b>	<b>2</b>
<b>2</b>	<b>OBI</b>	<b>3</b>
2.1	OBI . . . . .	3
2.1.1	Images . . . . .	3
2.1.2	Parameters . . . . .	4
2.1.3	Events . . . . .	4
2.2	Compared Parameters . . . . .	5
2.3	Aspect . . . . .	6
2.4	Star Slots . . . . .	9
2.4.1	Slot 3 . . . . .	9
2.4.2	Slot 4 . . . . .	10
2.4.3	Slot 5 . . . . .	11
2.4.4	Slot 6 . . . . .	12
2.4.5	Slot 7 . . . . .	13
2.5	FID Slots . . . . .	14
2.5.1	Slot 0 . . . . .	14
2.5.2	Slot 1 . . . . .	15
2.5.3	Slot 2 . . . . .	16
<b>3</b>	<b>Gratings</b>	<b>17</b>
3.1	LETG Arm . . . . .	17
<b>A</b>	<b>Summary</b>	<b>19</b>
A.1	Status . . . . .	19
A.2	Comments . . . . .	19

# 1 Front

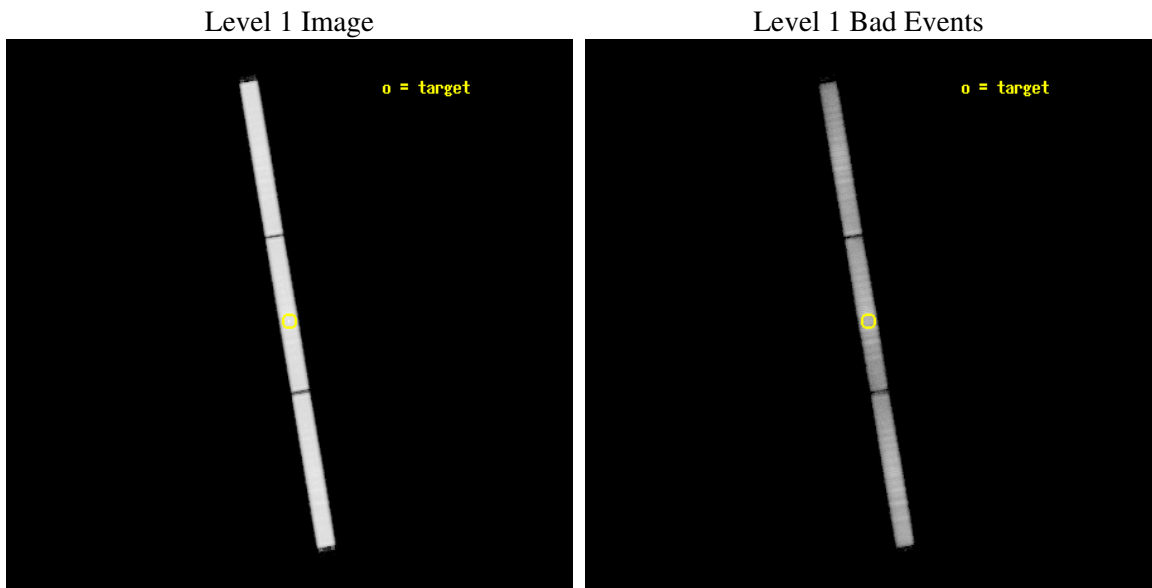
seq_num	200330
obs_id	7195
title	The location and spatial structure of the X-ray emitting plasma in the magnetically confined environment of beta Cep
observer	Dr Coralie Neiner
object	beta Cep
ra_targ	322.165
dec_targ	70.560717
ra_nom	322.16228784217
dec_nom	70.556123205707
roll_nom	260.26989840434
revision	2
ontime	27148.407502264
livetime	26933.423717612
l2events	1652632



## 2 OBI

### 2.1 OBI

#### 2.1.1 Images



### 2.1.2 Parameters

obi_num	0
ascdsver	7.6.7.1
caldbver	3.2.1
date	2006-04-04T14:15:30
revision	2

sched_exp_time	26576.063000
ontime	27149.176252276
l1events	2416162

### 2.1.3 Events

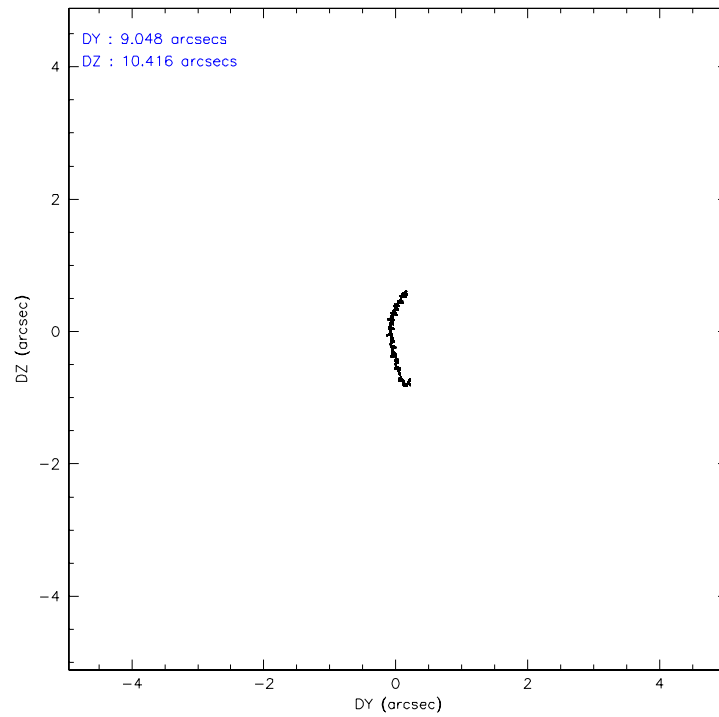
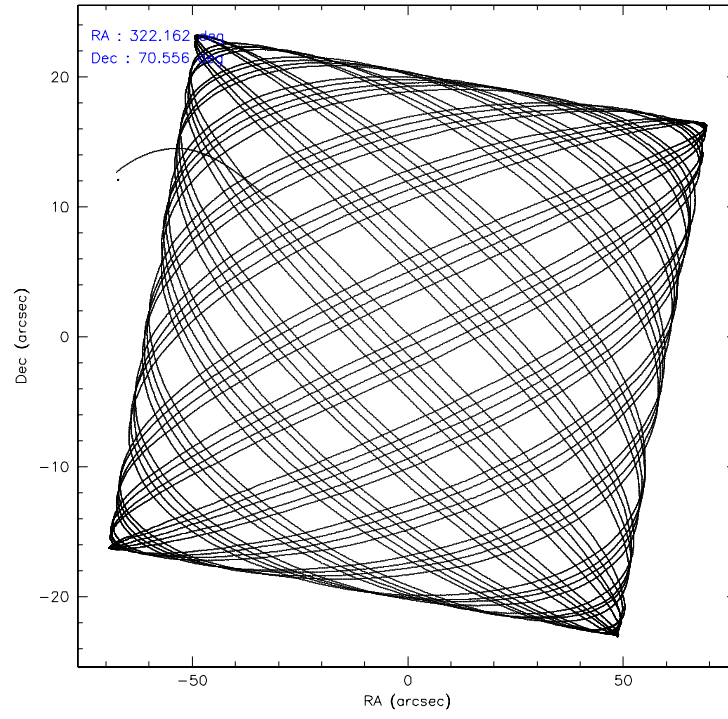
Level 1 Events

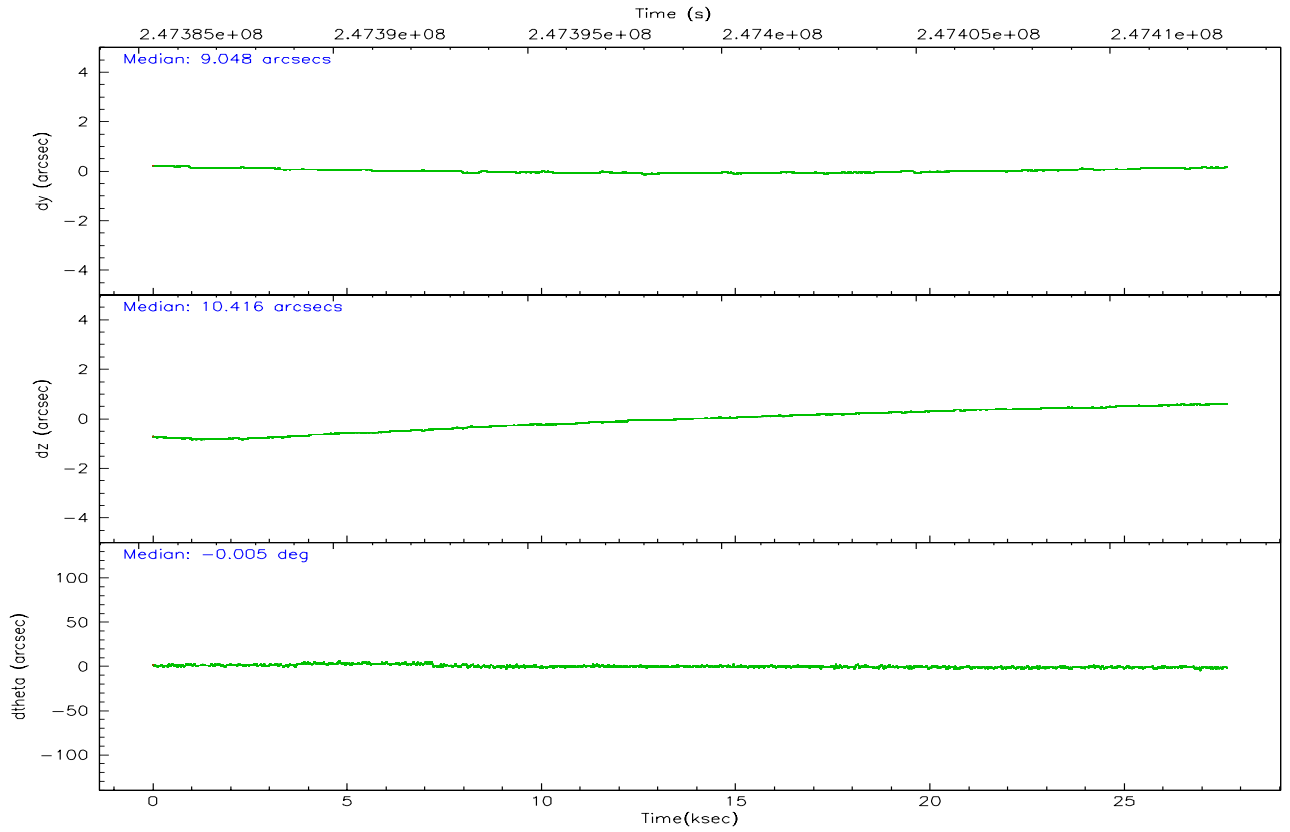
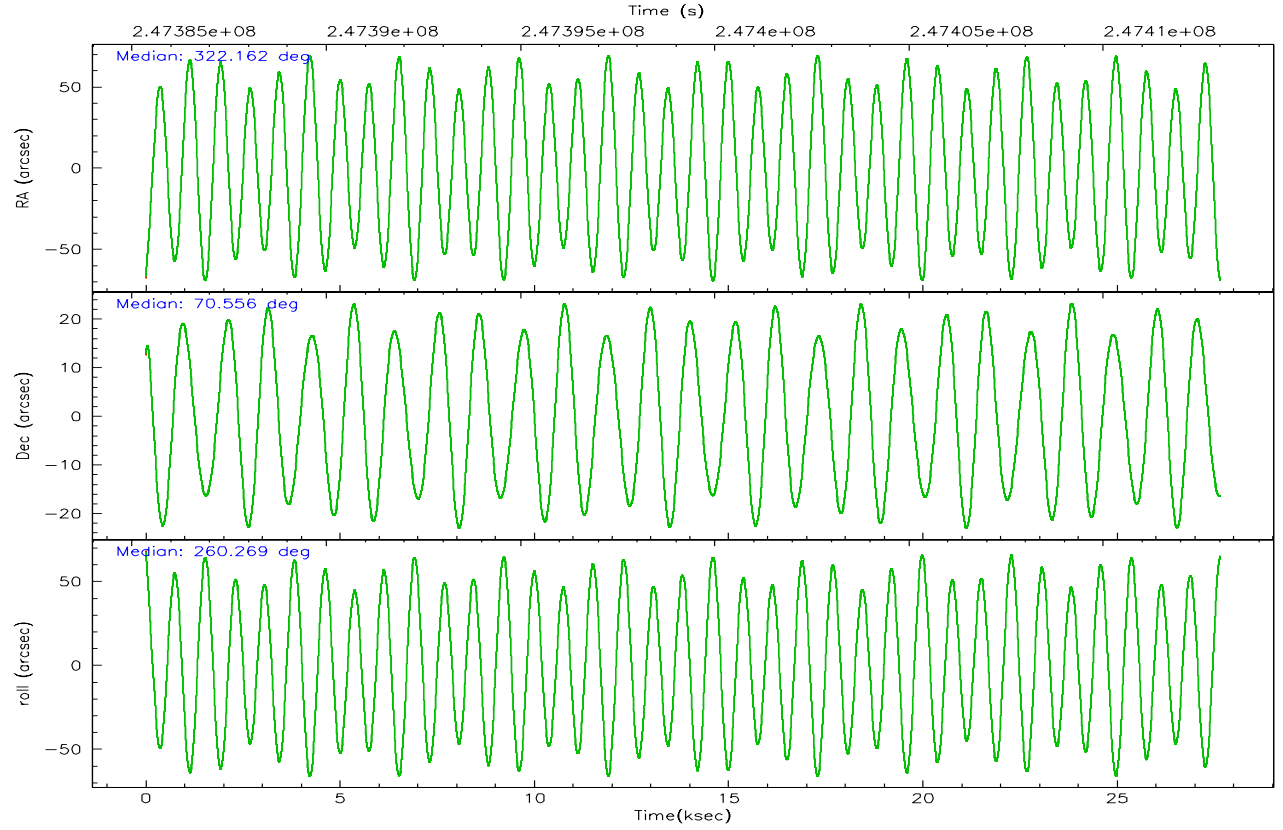
	<b>segment 1</b>	<b>segment 2</b>	<b>segment 3</b>
level 1 events	813425	794739	807998
rejected events	165400	181346	199163
rejected %	20%	22%	24%

## 2.2 Compared Parameters

Parameter	Planned	Actual	Parameter	Planned	Actual
Instrument	HRC	HRC	Obspar format version number	6	6
Detector	HRC-S	HRC-S	Obspar file type	PREDICTED	ACTUAL
Grating	LETG	LETG	Obspar update status	NONE	UPDATED
Data mode	OBSERVING	OBSERVING			
Observation mode	POINTING	POINTING			
Pointing RA	322.128446	322.1622878421695			
Pointing Dec	70.582433	70.55612320570732			
Pointing Roll	260.234471	260.2698984043415			
SIM focus pos (mm)	-1.429586	-1.428180813131781			
SIM defocus (mm)	0.1037507710433287	0.1051558262725154			
SIM translation stage pos (mm)	250.455976	250.466033080201			
SIM translation stage offset (mm)	0	-0.01005468664627074			
Phase constraints	Y	Y			
Phase period	12.000750	12.000750			
Phase epoch	53962.310000	53962.310000			
Phase start	0.966245	0.966245			
Phase end	0.033755	0.033755			
Phase start error	0.020000	0.020000			
Phase end error	0.020000	0.020000			
Observation start time	247385535.184000	247384588.98131			
Observation start date	2005-11-03T06:11:11	2005-11-03T05:56:28			
Observation end time	247412111.184000	247413628.25765			
Observation end date	2005-11-03T13:34:07	2005-11-03T14:00:28			

## 2.3 Aspect





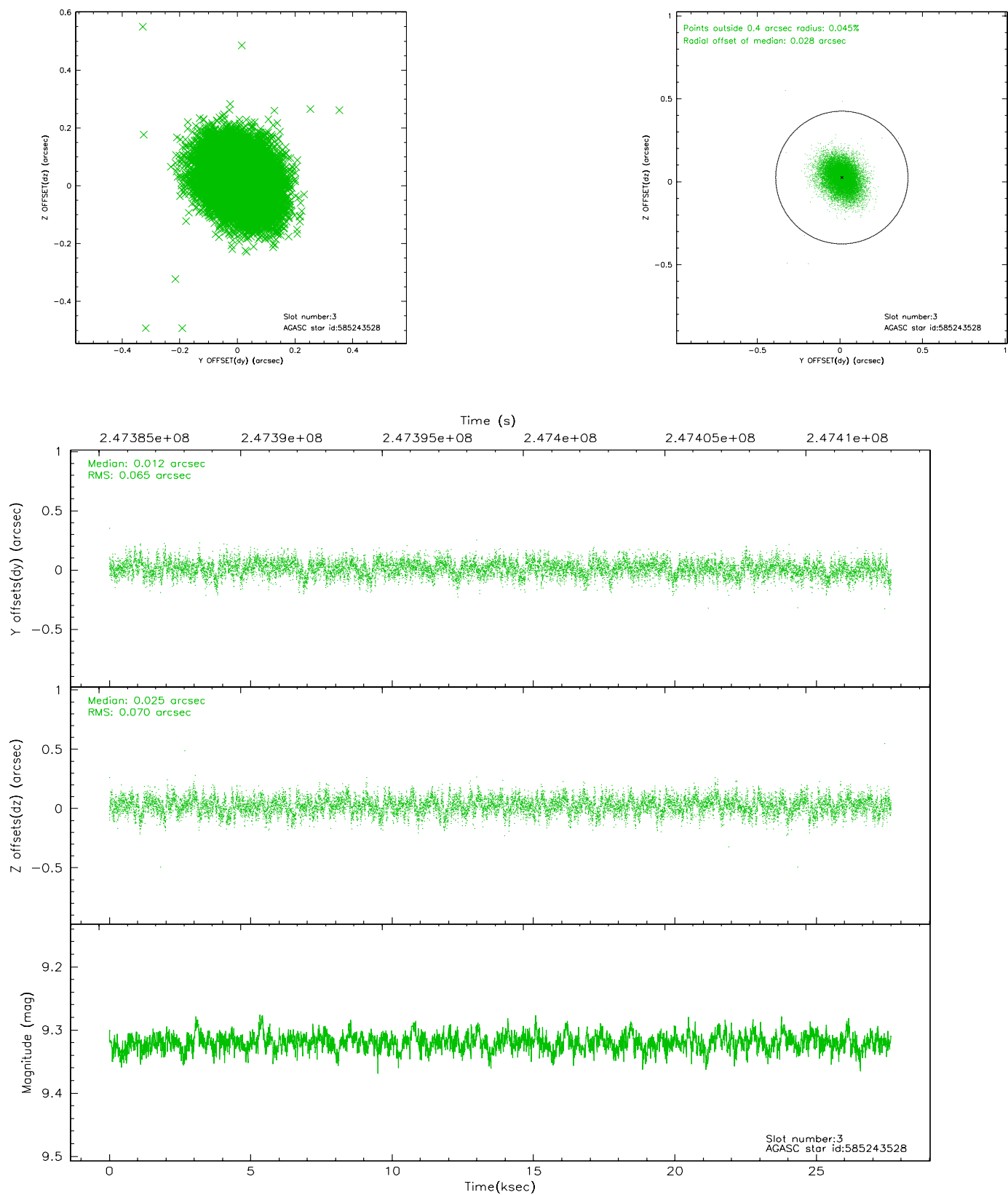
### Slot Statistics

slot	status	id	mag	n_pts	med_dy	med_dz	dr1	dr2	ra	dec	mean_y	mean_z
0	FID	HRC-S-1	7.02	6743	0.100	-0.132	0.006	0.020	0.000000	0.000000	-1163.28	-459.06
1	FID	HRC-S-2	7.02	6743	0.099	-0.162	0.020	0.045	0.000000	0.000000	1236.23	-451.73
2	FID	HRC-S-4	6.99	6744	0.203	-0.011	0.020	0.043	0.000000	0.000000	1235.24	573.14
3	GUIDE	585243528	9.32	13474	0.012	0.025	0.101	0.165	323.001841	70.190189	1203.90	1288.68
4	GUIDE	585244656	7.44	13485	-0.069	-0.011	0.076	0.121	322.746463	70.823219	-981.72	572.75
5	GUIDE	585245544	7.37	13486	-0.025	-0.069	0.067	0.107	321.319997	70.477535	530.59	-895.22
6	GUIDE	585249712	9.18	13478	0.094	0.023	0.102	0.168	322.943679	70.596904	-222.78	950.77
7	GUIDE	585244168	9.02	13481	-0.015	0.031	0.078	0.129	323.050612	69.955180	2023.97	1503.27

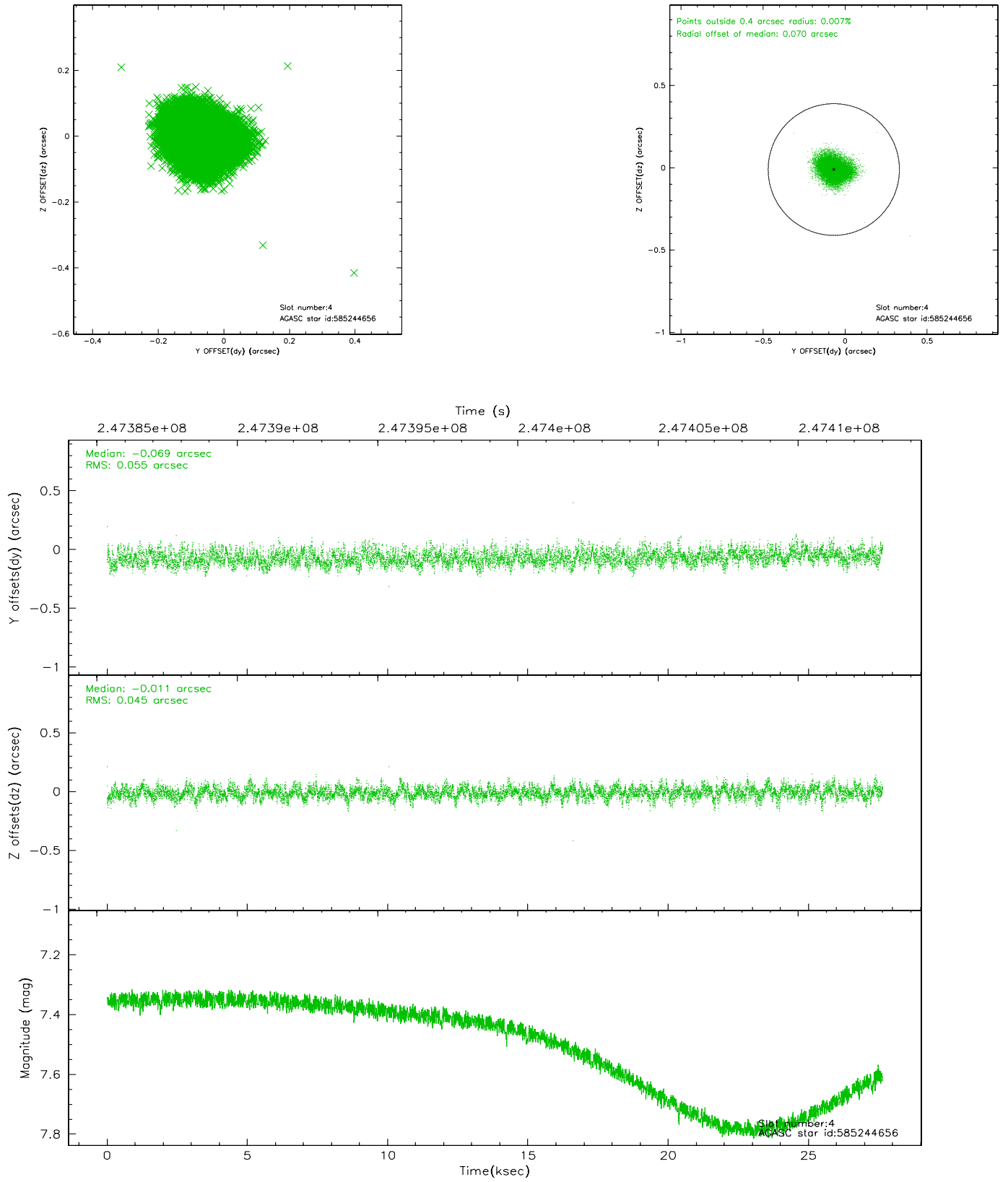


## 2.4 Star Slots

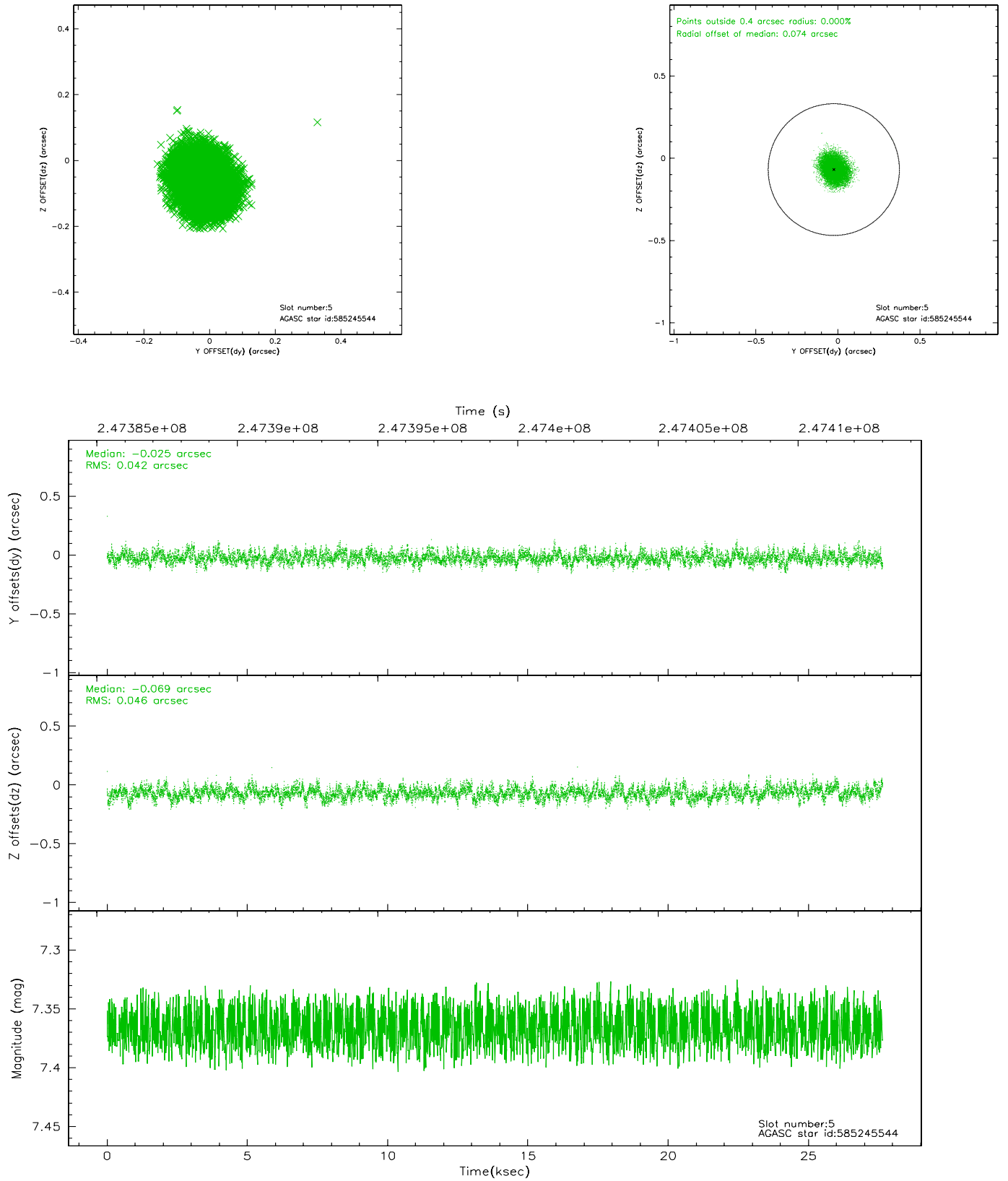
### 2.4.1 Slot 3



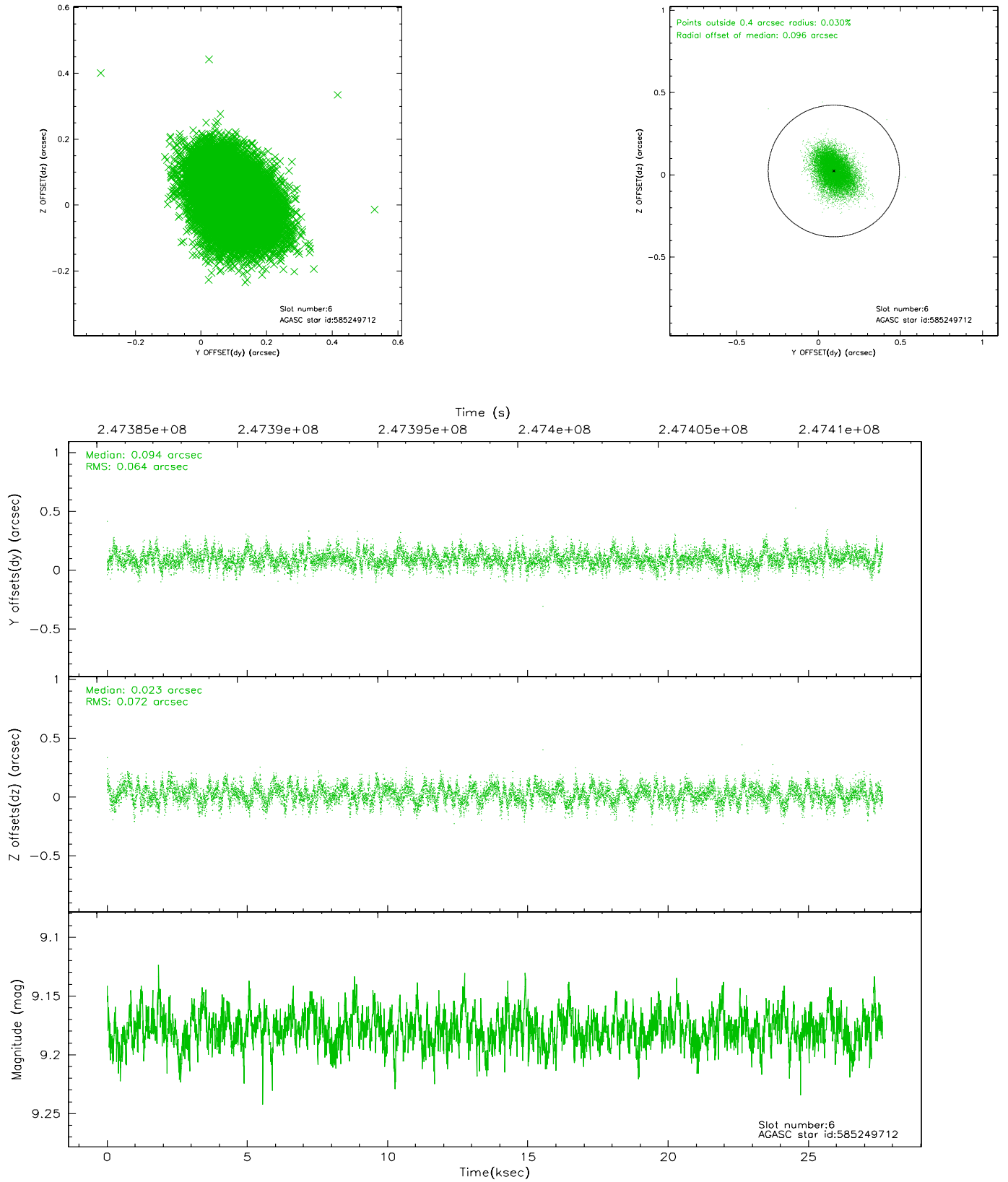
## 2.4.2 Slot 4



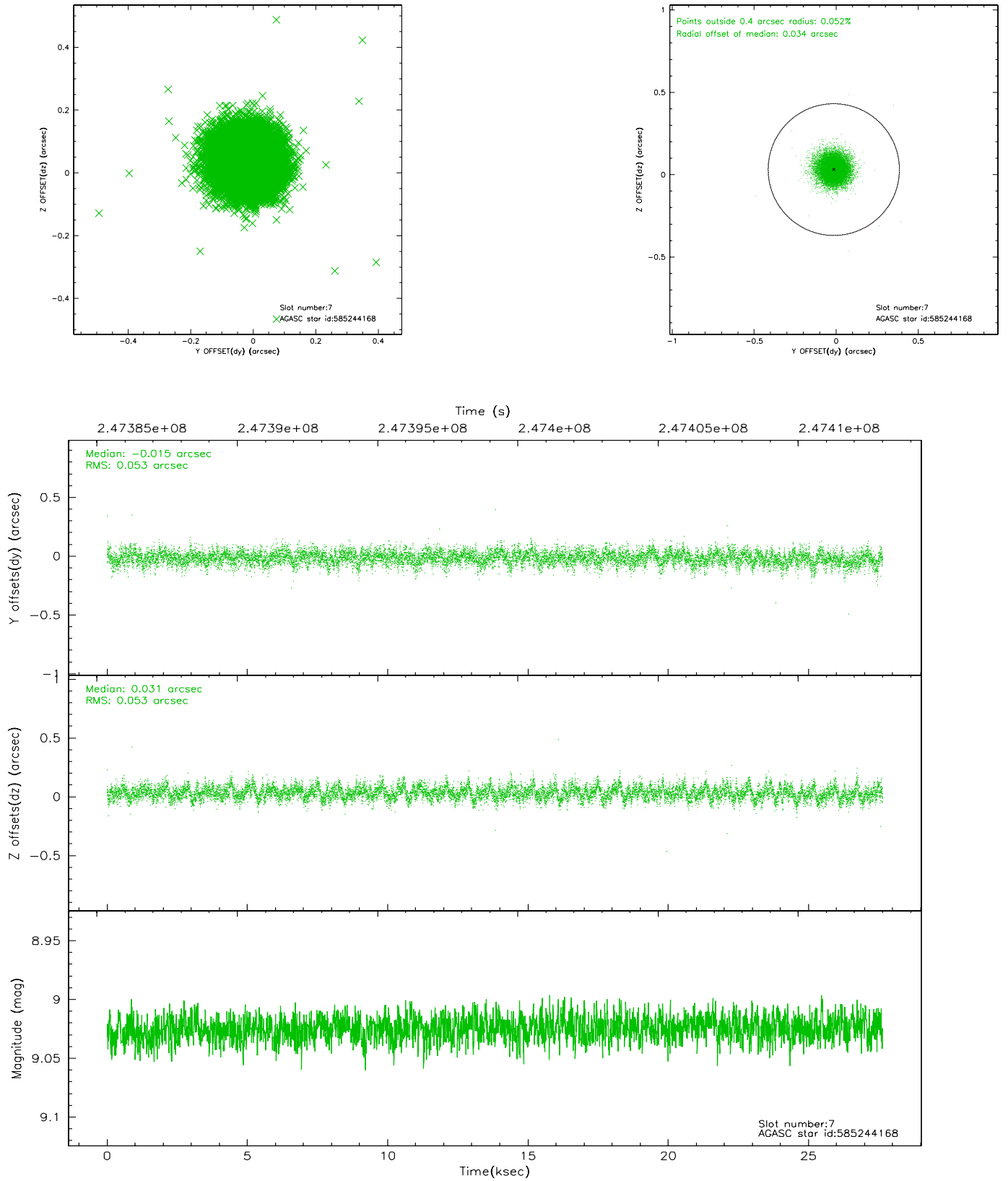
### 2.4.3 Slot 5



## 2.4.4 Slot 6

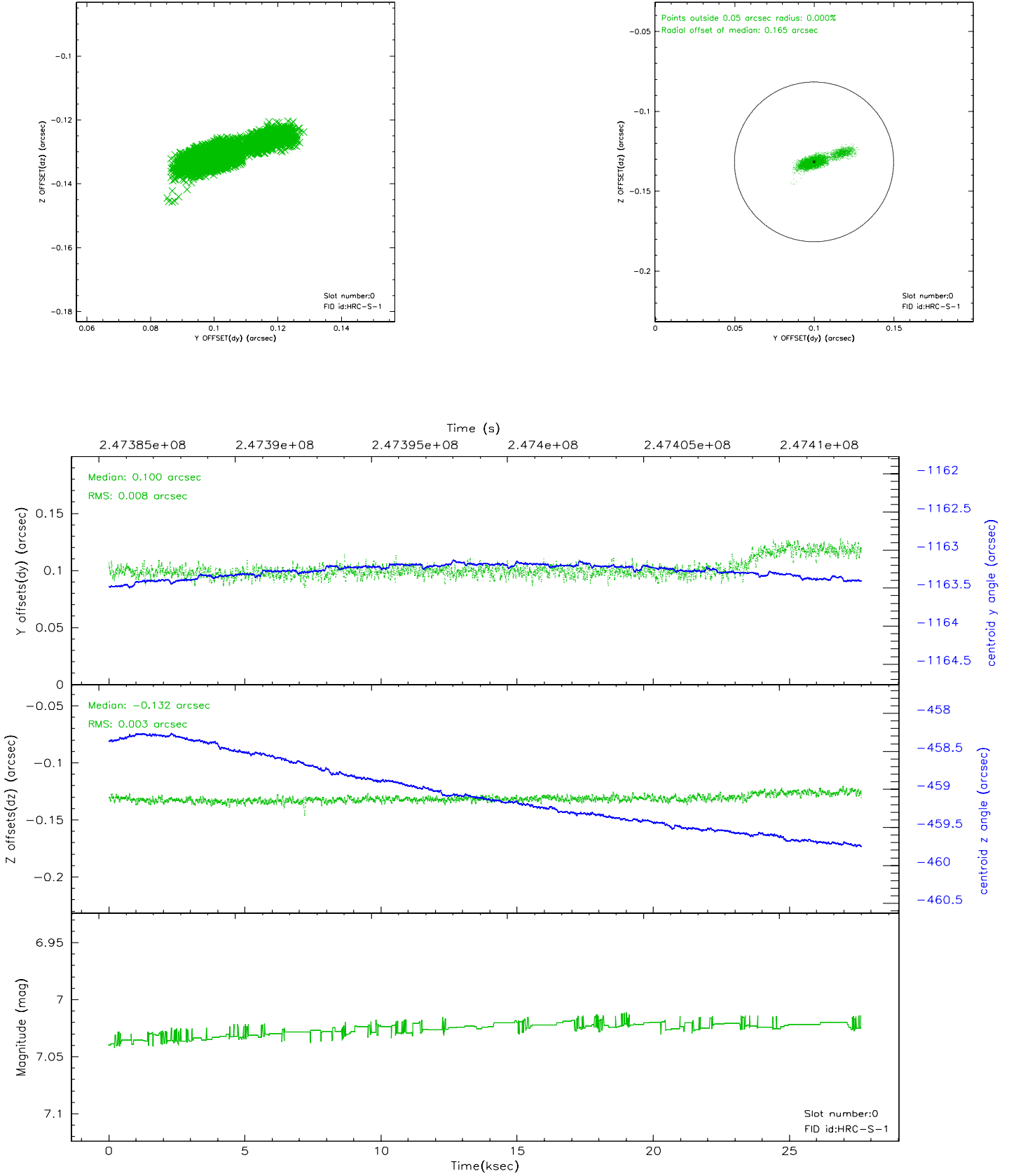


## 2.4.5 Slot 7

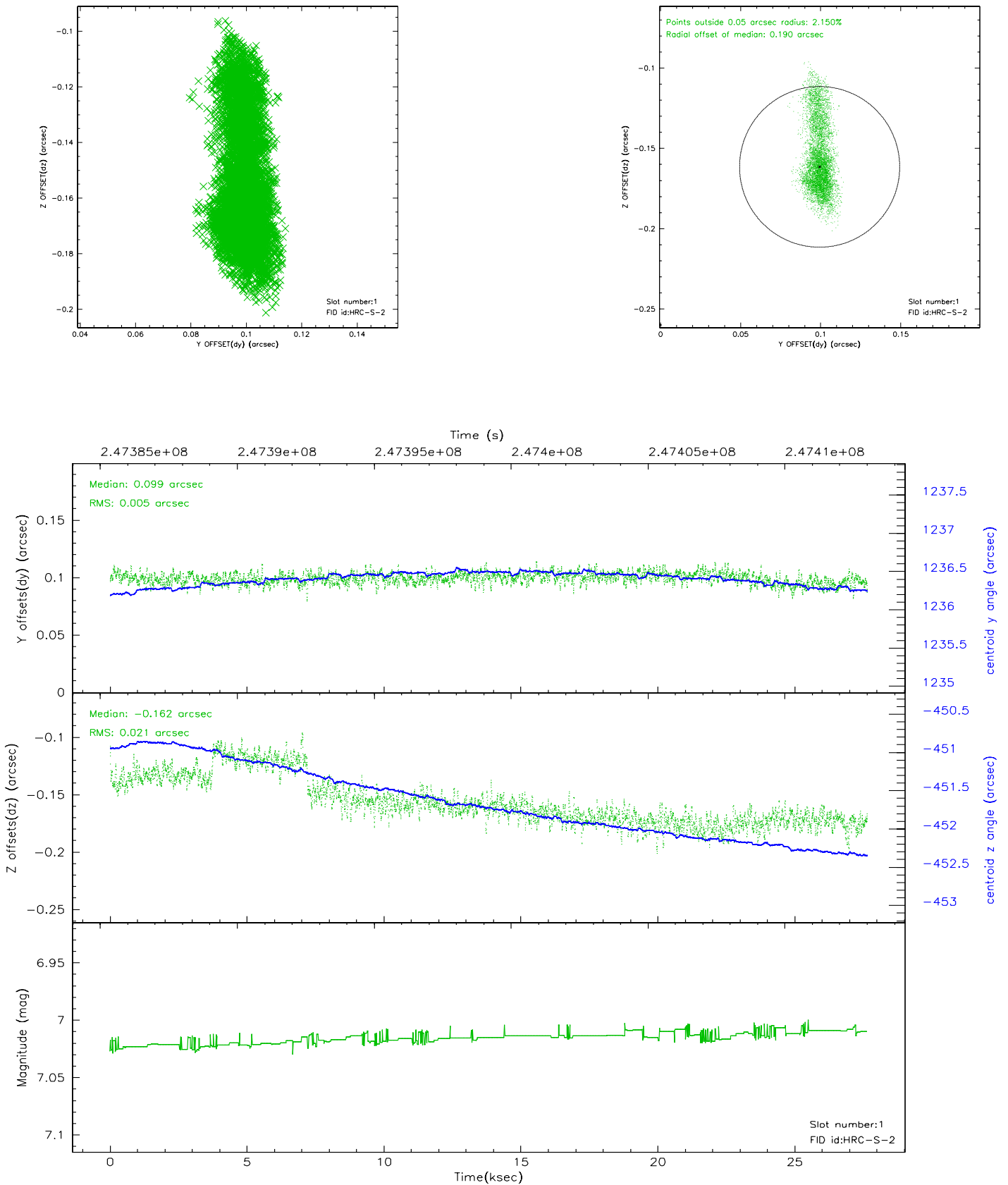


## 2.5 FID Slots

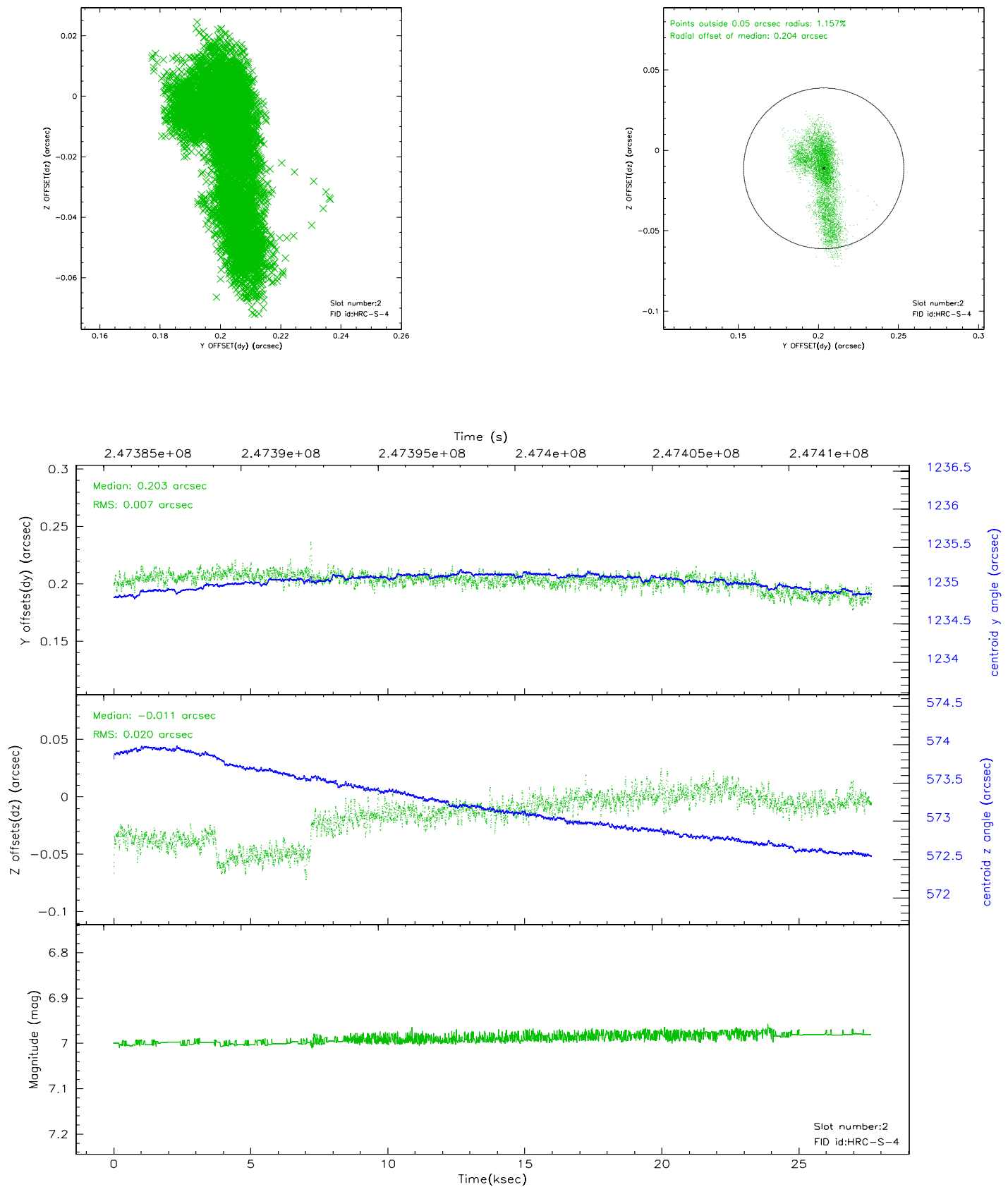
### 2.5.1 Slot 0



## 2.5.2 Slot 1



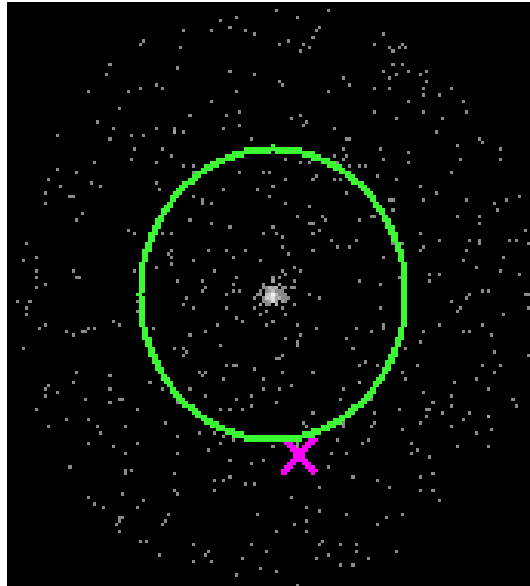
### 2.5.3 Slot 2



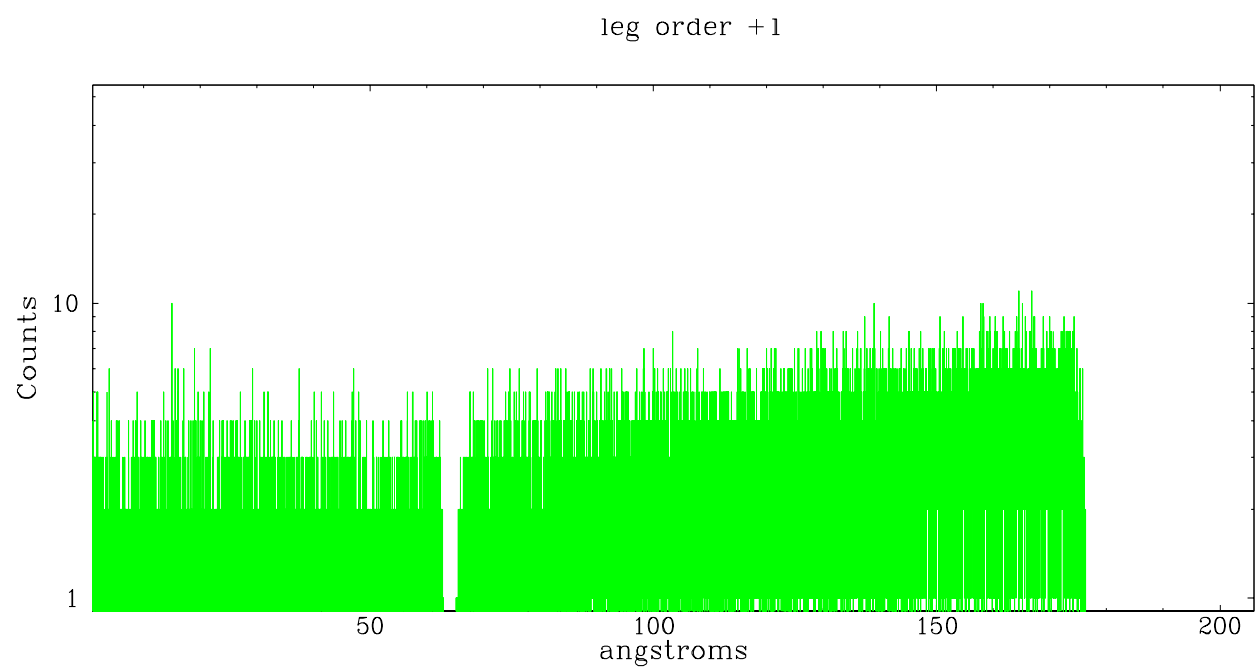
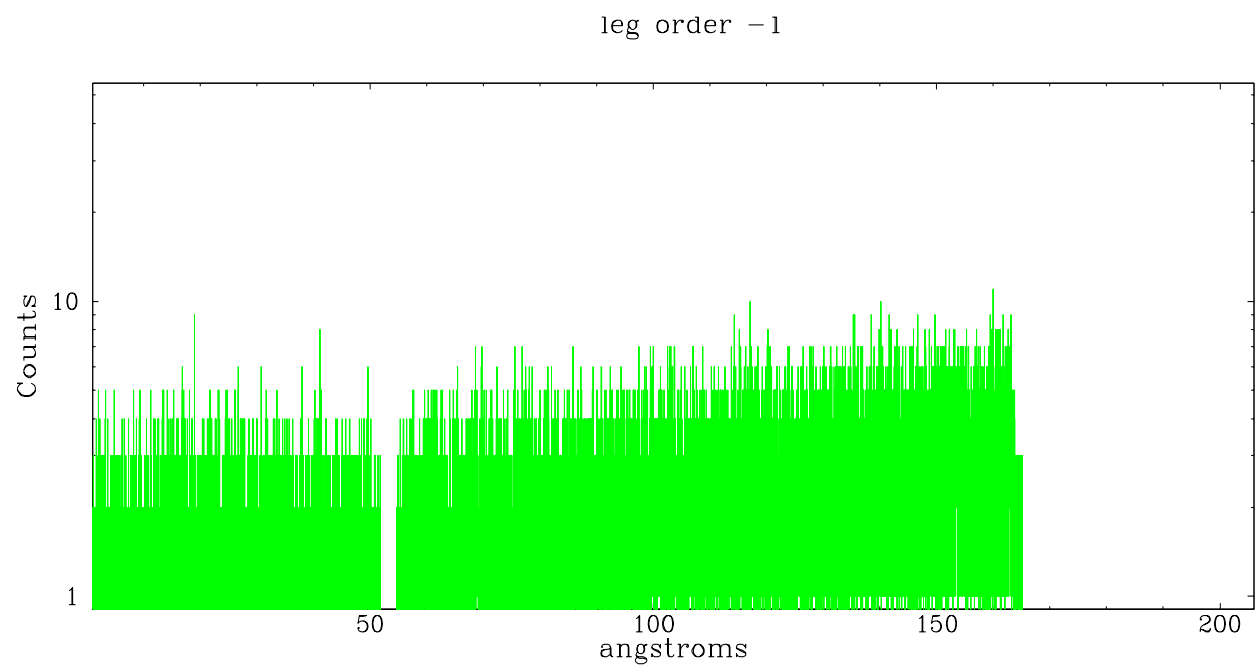


## 3 Gratings

### 3.1 LETG Arm



LETG Zero Order



## A Summary

### A.1 Status

V&V Scientist	Doug Morgan
V&V Date (YYYY-MM-DD)	2006.04.04
V&V Edition	1
V&V Disposition and Status	OK
V&V Charge Time	27.1484

### A.2 Comments