

V&V Reference Report

L2 ASCDS Version : 8.4.3

Observation 7135 - L2 Version 2
Chandra X-Ray Center

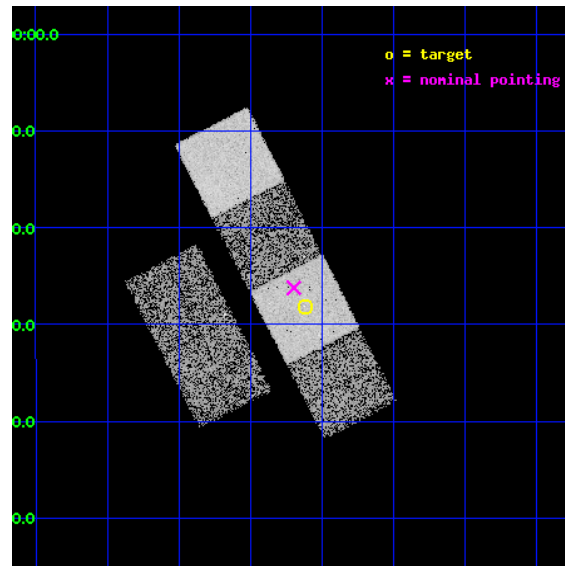
L2 Processing Date : Mar 25 2012

Contents

1	Front	2
2	OBI	3
2.1	OBI	3
2.1.1	Images	3
2.1.2	Bias	3
2.1.3	Parameters	4
2.1.4	Events	4
2.2	Compared Parameters	5
2.3	Aspect	6
2.4	Star Slots	9
2.4.1	Slot 3	9
2.4.2	Slot 4	10
2.4.3	Slot 5	11
2.4.4	Slot 6	12
2.4.5	Slot 7	13
2.5	FID Slots	14
2.5.1	Slot 0	14
2.5.2	Slot 1	15
2.5.3	Slot 2	16
A	Summary	17
A.1	Status	17
A.2	Comments	17

1 Front

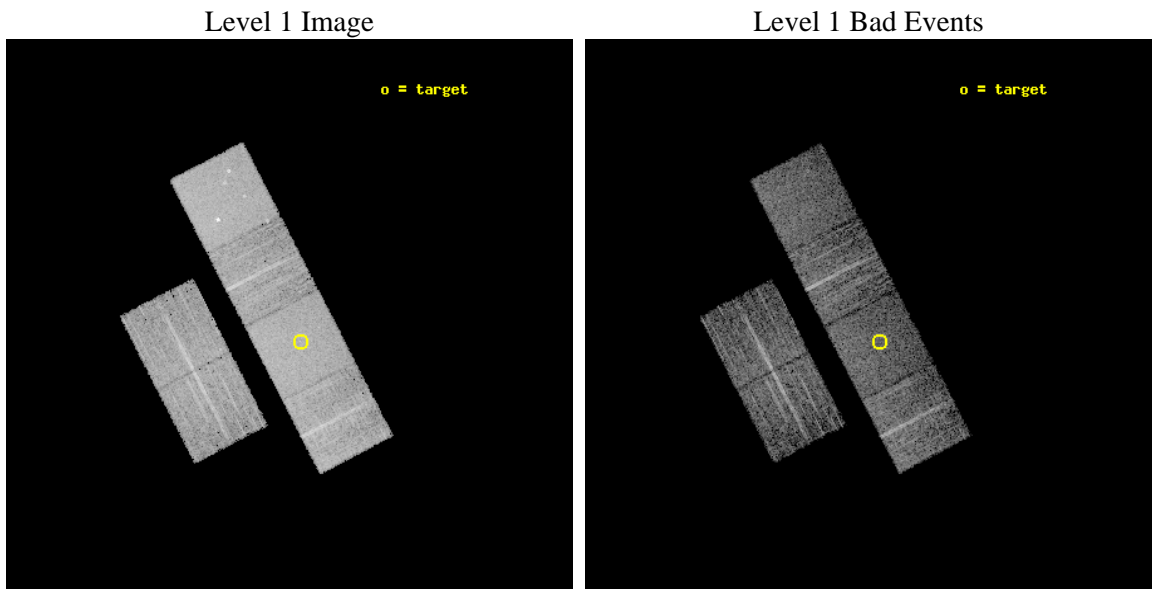
seq_num	600573	Sequence number
obs_id	7135	Observation id
title	A Complete Sample of ULX Host Galaxies	Proposal title
observer	Douglas Swartz	Principal investigator
object	UGC 06850	Source name
dtcycle	0	
cycle	P	events from which exps? Prim/Second/Both
ra_targ	178.155417	Observer's specified target RA [deg]
dec_targ	-2.469389	Observer's specified target Dec [deg]
ra_nom	178.17419094022	Nominal RA [deg]
dec_nom	-2.436982595274	Nominal Dec [deg]
roll_nom	62.630948243527	Nominal Roll [deg]
revision	2	Processing version of data
ontime	5126.3999809027	Sum of GTIs [s]
livetime	5061.486417597	Livetime [s]
ontime2	5126.3999809027	Sum of GTIs [s]
ontime3	5126.3999809027	Sum of GTIs [s]
ontime5	5126.3999809027	Sum of GTIs [s]
ontime6	5126.3999809027	Sum of GTIs [s]
ontime7	5126.3999809027	Sum of GTIs [s]
ontime8	5126.3999809027	Sum of GTIs [s]
l2events	70457	Number of level 2 events



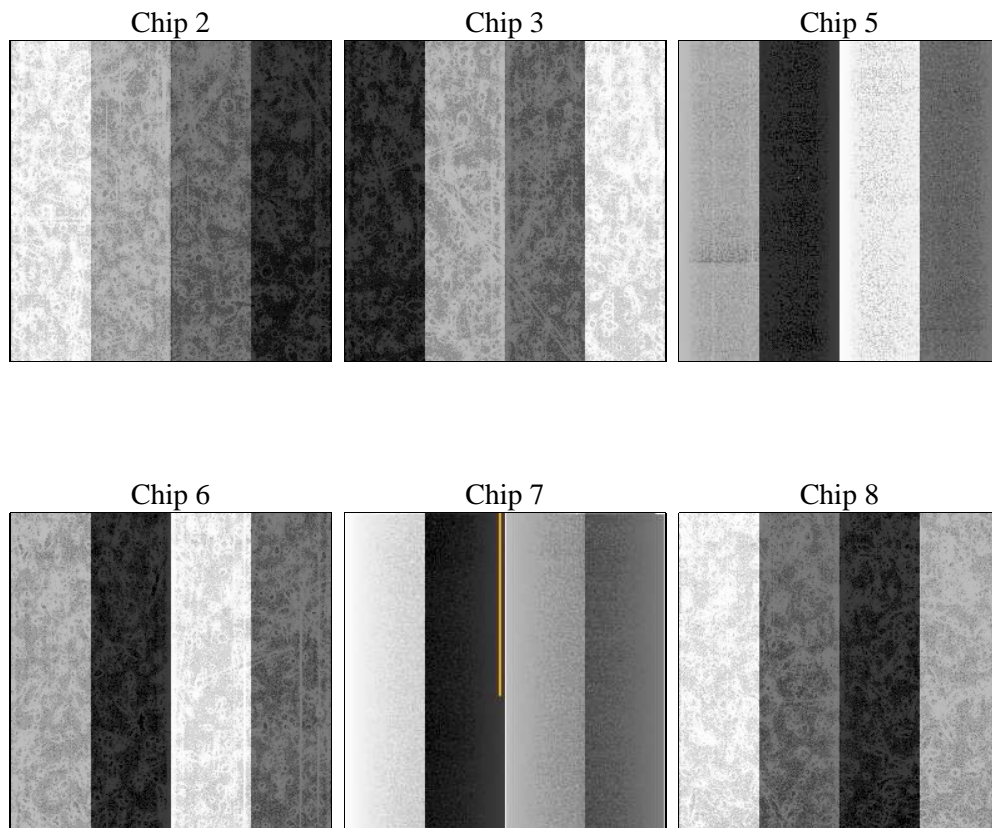
2 OBI

2.1 OBI

2.1.1 Images



2.1.2 Bias



2.1.3 Parameters

obi_num	0	Obi number	sched_exp_time	5010.000000	[s] Scheduled observation exposure time
ascdsver	8.4.3	Processing system revision	ontime	5126.3999809027	Sum of GTIs [s]
caldbver	4.4.8	 	ontime2	5126.3999809027	Sum of GTIs [s]
date	2012-03-25T15:19:22	Date and time of file creation	ontime3	5126.3999809027	Sum of GTIs [s]
revision	2	Processing version of data	ontime5	5126.3999809027	Sum of GTIs [s]
			ontime6	5126.3999809027	Sum of GTIs [s]
			ontime7	5126.3999809027	Sum of GTIs [s]
			ontime8	5126.3999809027	Sum of GTIs [s]
			l1events	328630	Number of level 1 events

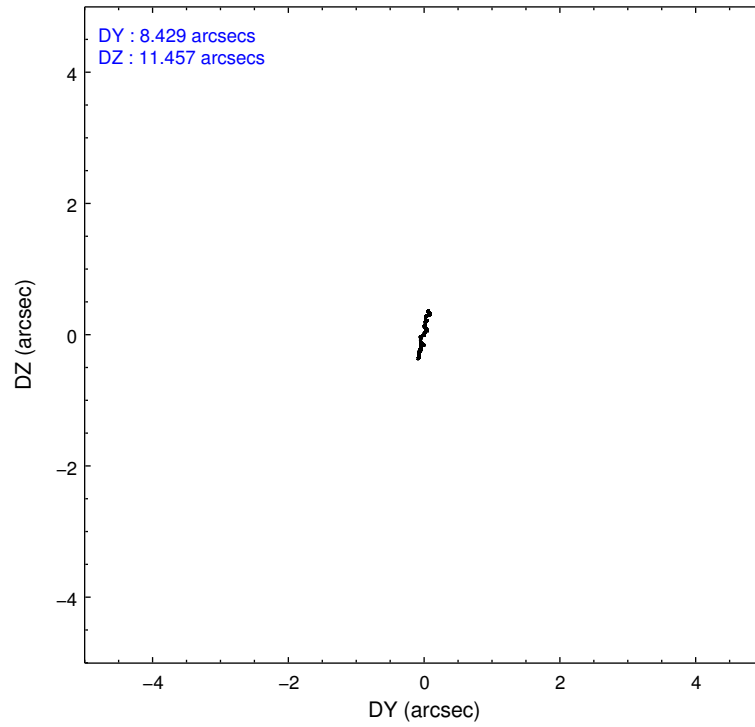
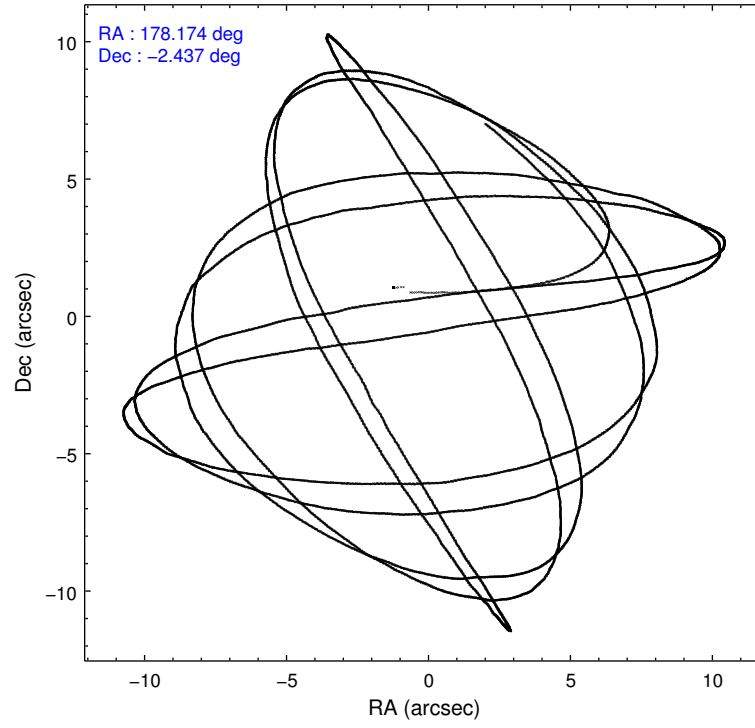
2.1.4 Events

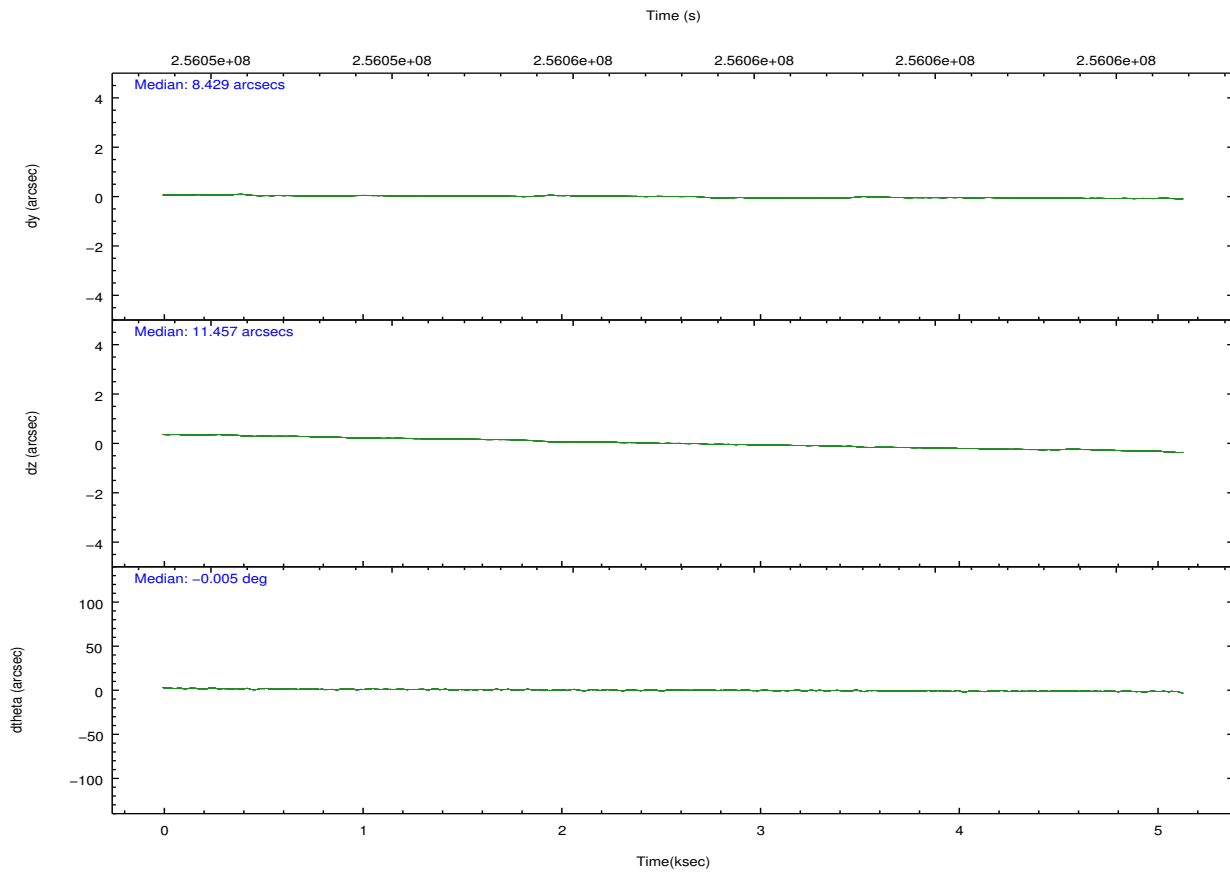
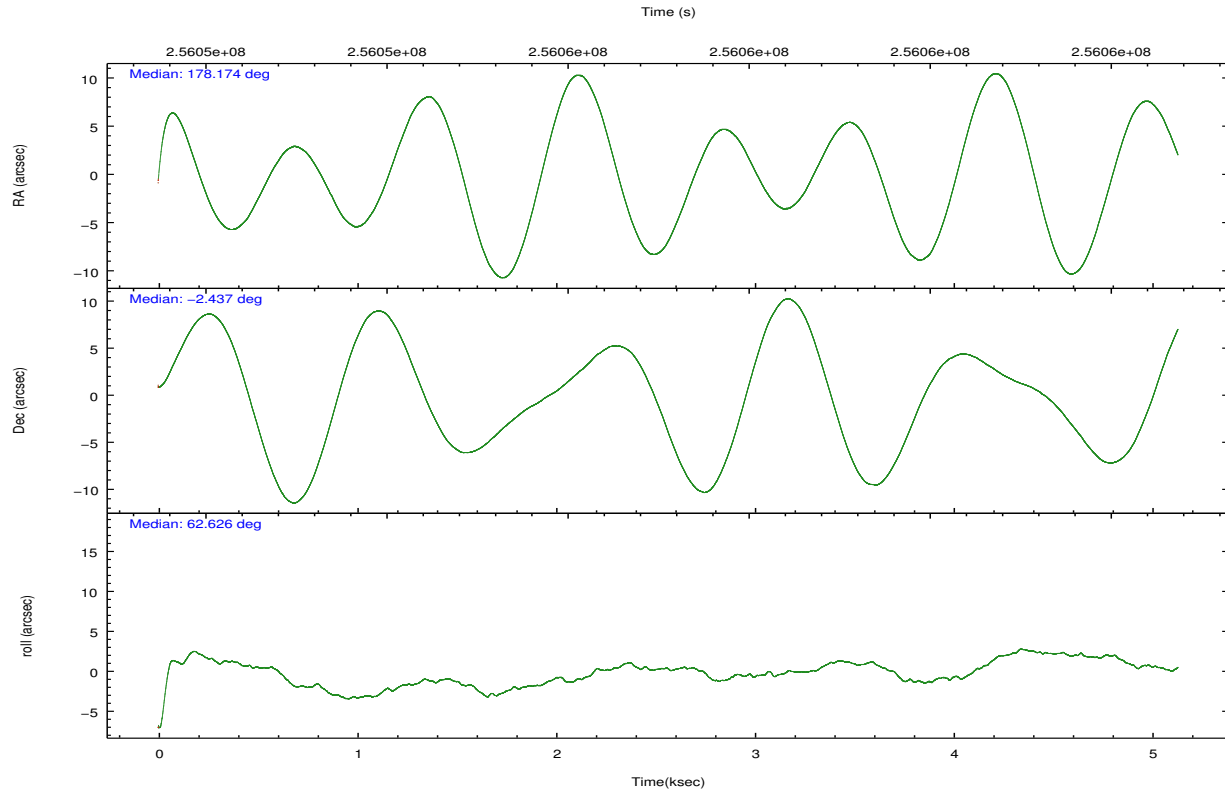
	ccd 2	ccd 3	ccd 5	ccd 6	ccd 7	ccd 8		ccd 2	ccd 3	ccd 5	ccd 6	ccd 7	ccd 8
level 1 events	45465	45644	69122	48345	62227	57827	grade 0 events	2476	2165	3561	2231	2328	3995
rejected events	40277	40714	38813	43049	37623	46035		5%	4%	5%	4%	3%	6%
rejected %	88%	89%	56%	89%	60%	79%	grade 1 events	25	25	116	22	57	48
								0%	0%	0%	0%	0%	0%
							grade 2 events	1054	1039	9571	1217	5319	2668
								2%	2%	13%	2%	8%	4%
							grade 3 events	540	512	1283	527	2288	1404
								1%	1%	1%	1%	3%	2%
							grade 4 events	522	536	1160	532	2256	1307
								1%	1%	1%	1%	3%	2%
							grade 5 events	1818	1989	4918	2170	5987	2790
								3%	4%	7%	4%	9%	4%
							grade 6 events	902	975	16564	1093	13895	3006
								1%	2%	23%	2%	22%	5%
							grade 7 events	38128	38403	31949	40553	30097	42609
								83%	84%	46%	83%	48%	73%

2.2 Compared Parameters

Parameter	Planned	Actual	Parameter	Planned	Actual
Instrument	ACIS	ACIS	Obspar format version number	7	7
Detector	ACIS-235678	ACIS-235678	Obspar file type	PREDICTED	ACTUAL
Grating	NONE	NONE	Obspar update status	NONE	UPDATED
Data mode	FAINT	FAINT	Number of optional ACIS chips dropped	0	0
Observation mode	POINTING	POINTING	On-chip summing requested	N	N
[deg] Pointing RA	178.175797	178.1741909402233	Subarray requested	NONE	NONE
[deg] Pointing Dec	-2.464214	-2.436982595273959	Alternating exposures requested	N	N
[deg] Pointing Roll	62.474409	62.63094824352706	[s] Primary exposure time	0.000000	3.2
[mm] SIM focus pos	-0.684267	-0.6828225247311905			
[mm] SIM defocus	0	0.001444936568705701			
[mm] SIM translation stage pos	-190.132523	-190.1400660498719			
[mm] SIM translation stage offset	0	0.00754346686406393			
[s] Observation start time (MET)	256053108.184000	256051916.60746			
Observation start date	2006-02-11T13:50:43	2006-02-11T13:31:56			
[s] Observation end time (MET)	256058118.184000	256058423.82026			
Observation end date	2006-02-11T15:14:13	2006-02-11T15:20:23			
Read mode	TIMED	TIMED			

2.3 Aspect



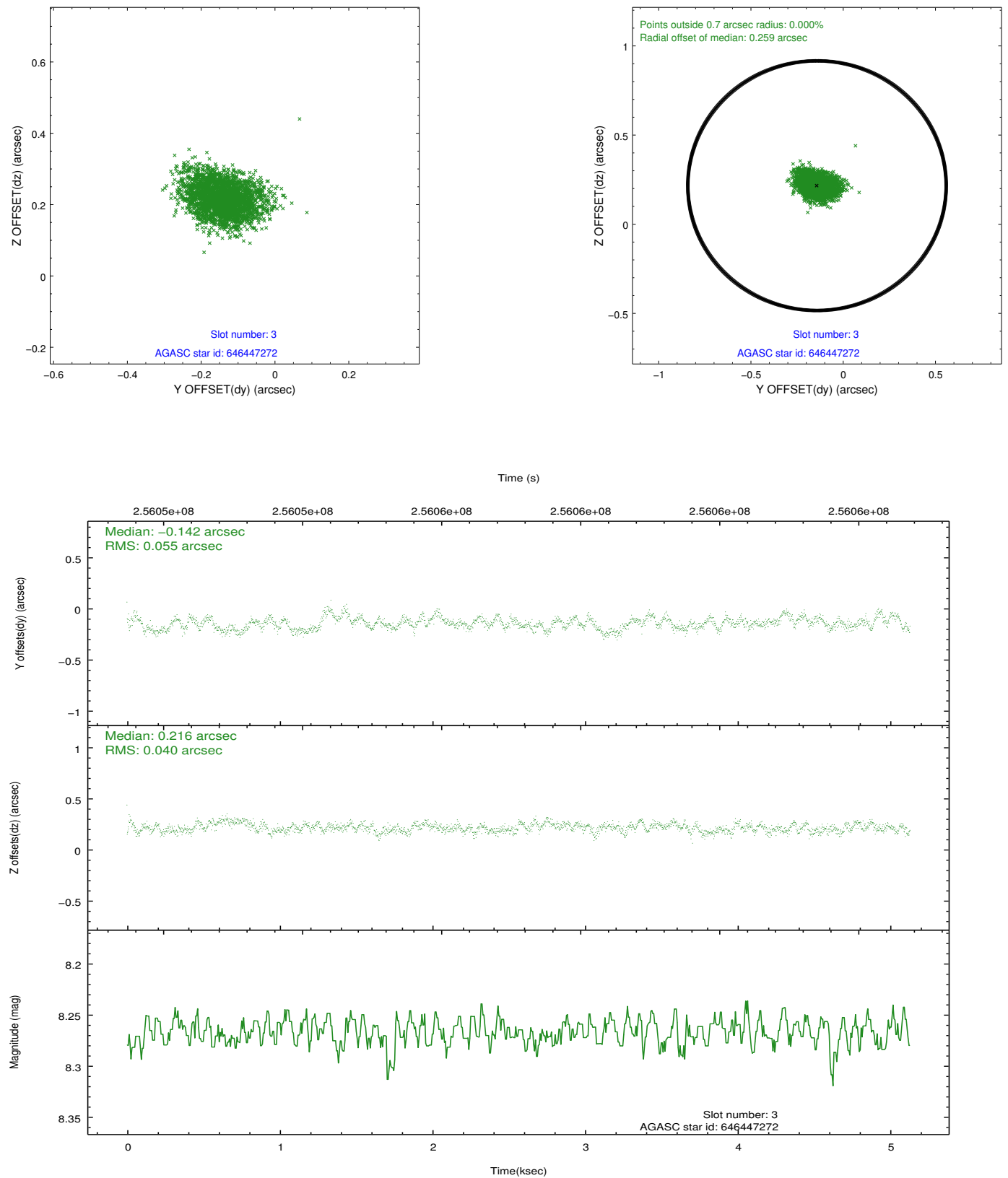


Slot Statistics

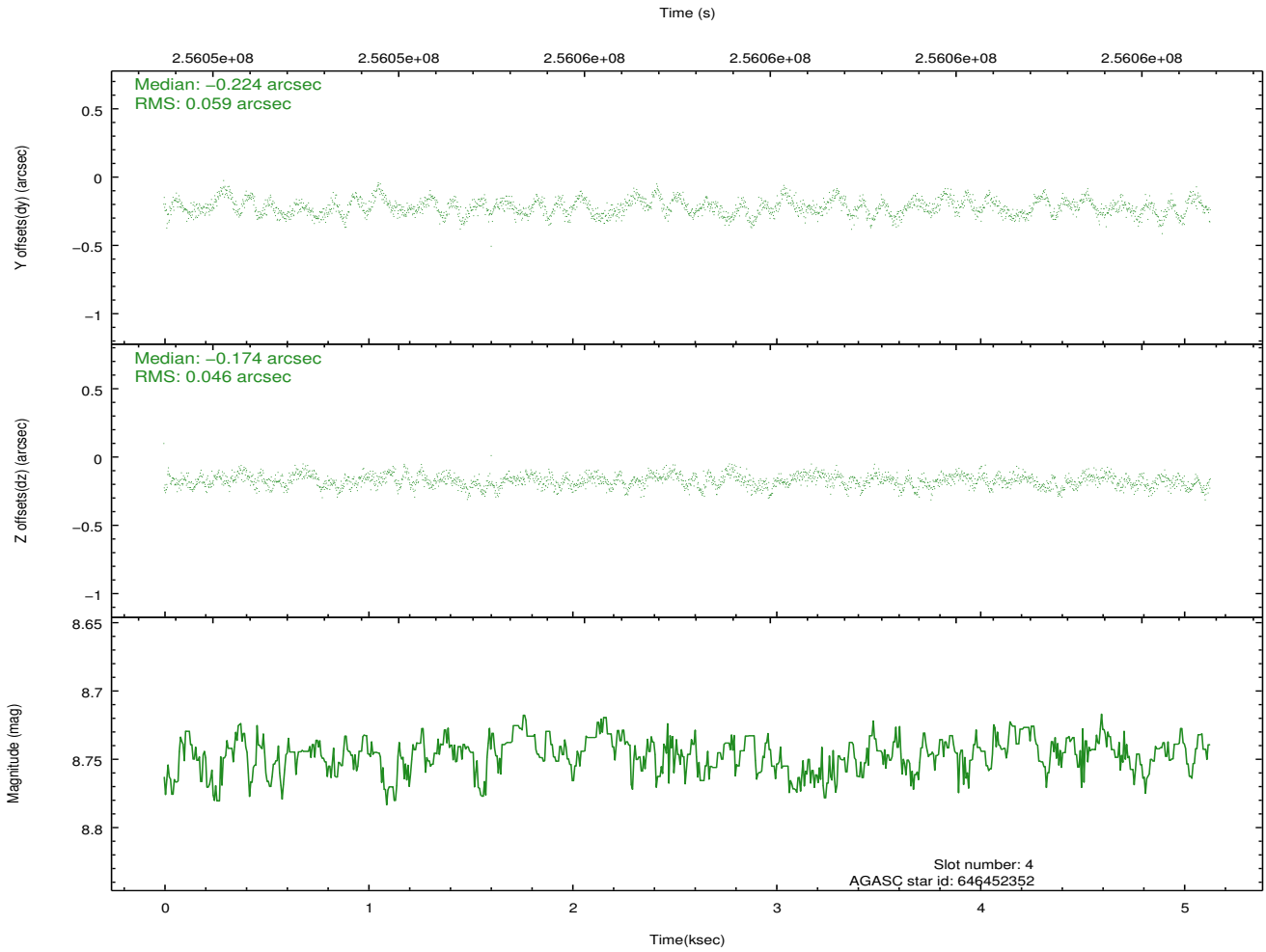
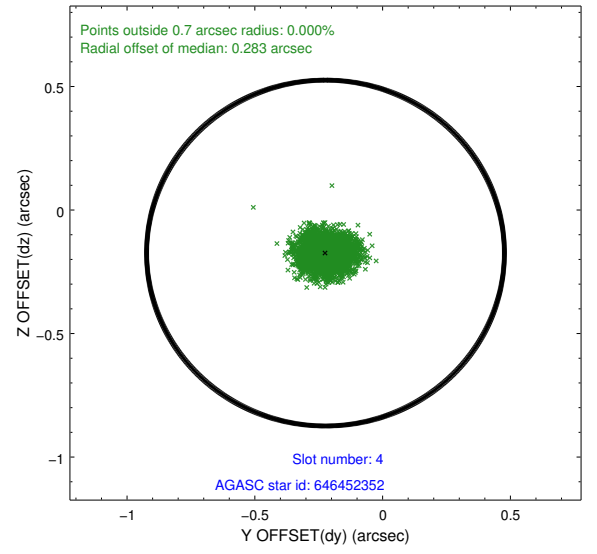
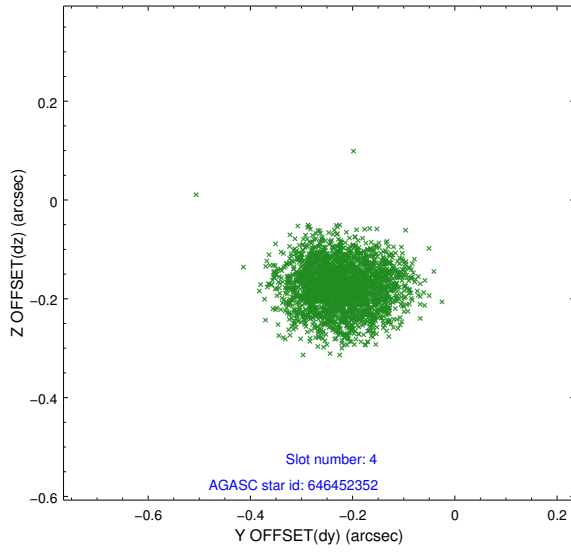
slot	status	id	mag	n_pts	med_dy	med_dz	dr1	dr2	ra	dec	mean_y	mean_z
0	FID	ACIS-S-2	7.10	1252	-0.025	-0.021	0.009	0.015	0.000000	0.000000	-761.22	-1732.78
1	FID	ACIS-S-4	7.20	1252	0.121	0.018	0.006	0.011	0.000000	0.000000	2151.65	174.55
2	FID	ACIS-S-5	7.23	1252	-0.127	0.012	0.009	0.014	0.000000	0.000000	-1812.66	169.52
3	GUIDE	646447272	8.27	2504	-0.142	0.216	0.073	0.119	178.727936	-2.375175	1201.64	-1612.94
4	GUIDE	646452352	8.75	2503	-0.224	-0.174	0.082	0.127	177.917180	-1.846689	1541.40	1852.08
5	GUIDE	646453112	9.68	2502	-0.026	0.085	0.103	0.171	178.954358	-2.174683	2218.64	-2001.42
6	GUIDE	646711952	8.95	2501	0.184	-0.082	0.089	0.142	177.400472	-2.745655	-2186.89	2003.10
7	GUIDE	646844112	9.60	2495	0.207	-0.045	0.099	0.158	177.703598	-2.779505	-1792.33	981.92

2.4 Star Slots

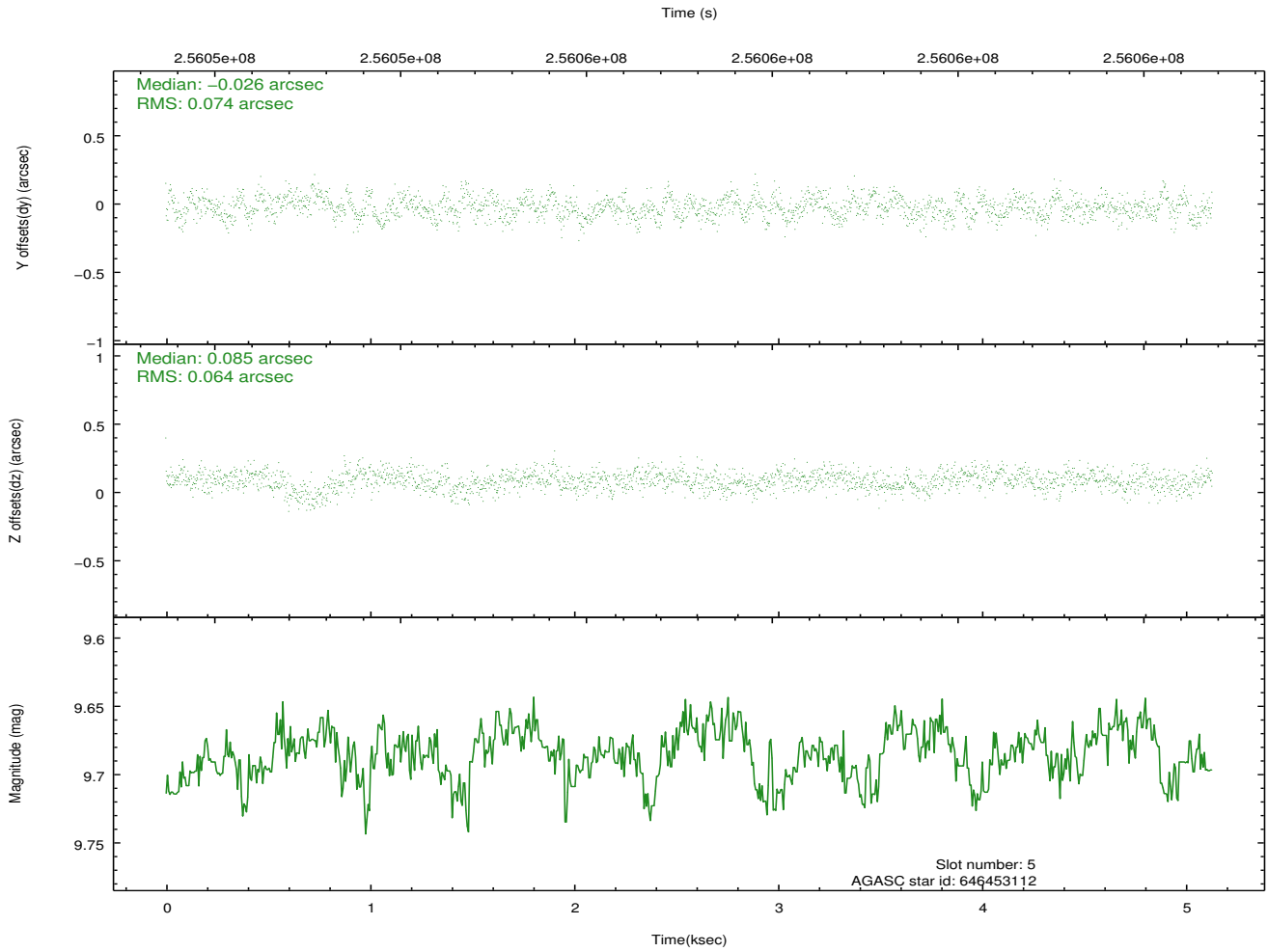
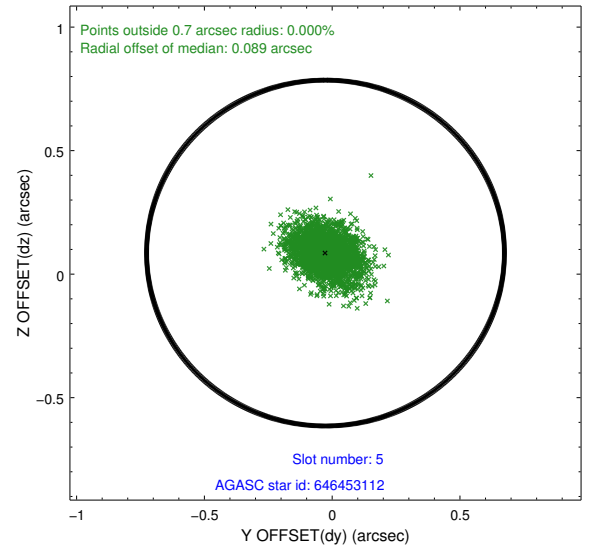
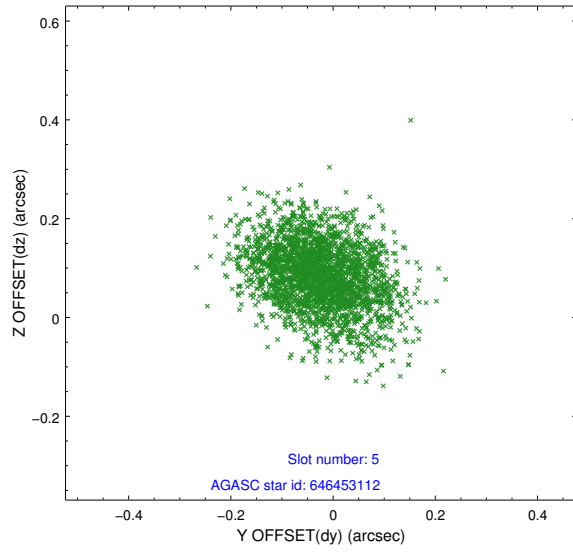
2.4.1 Slot 3



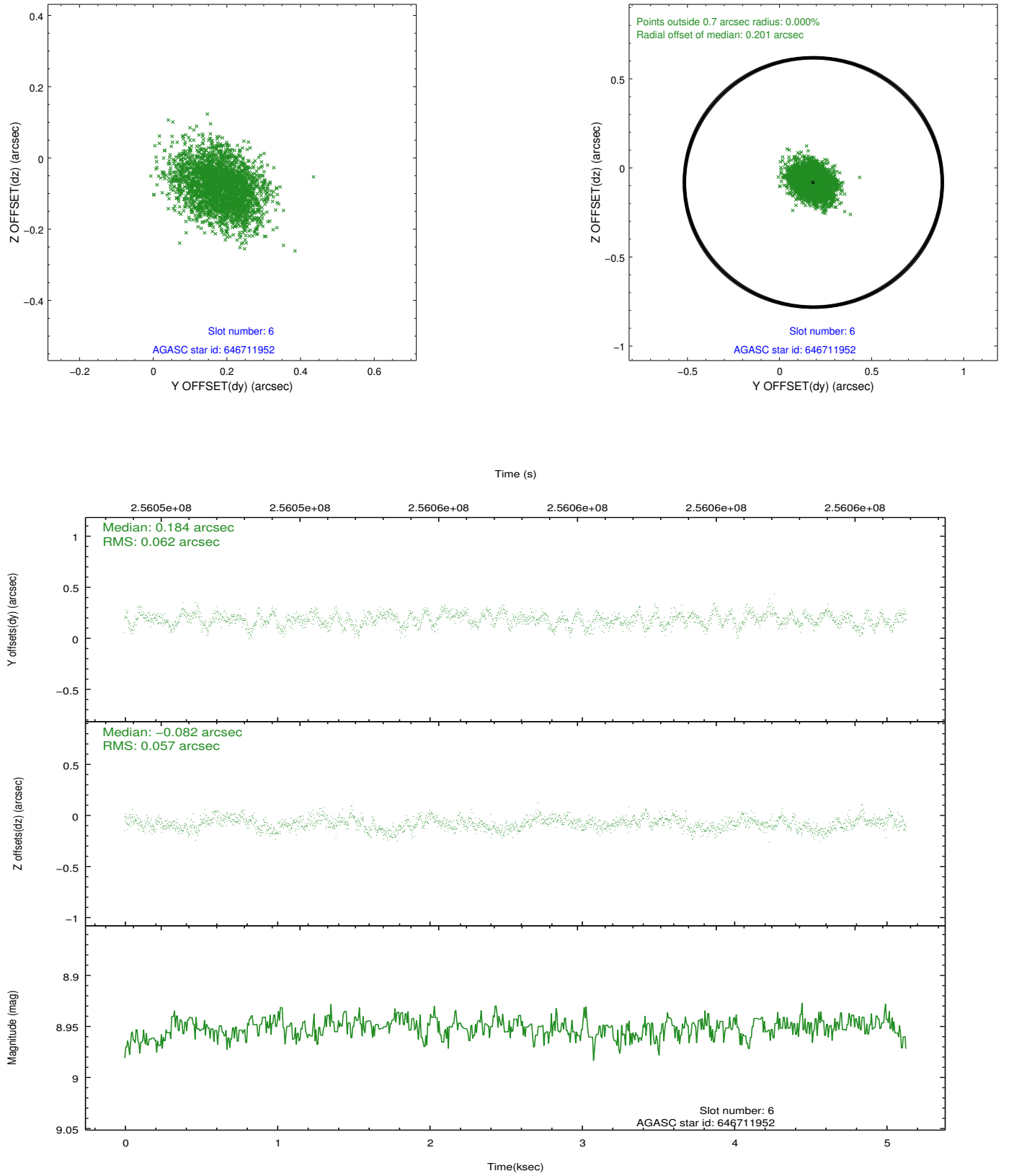
2.4.2 Slot 4



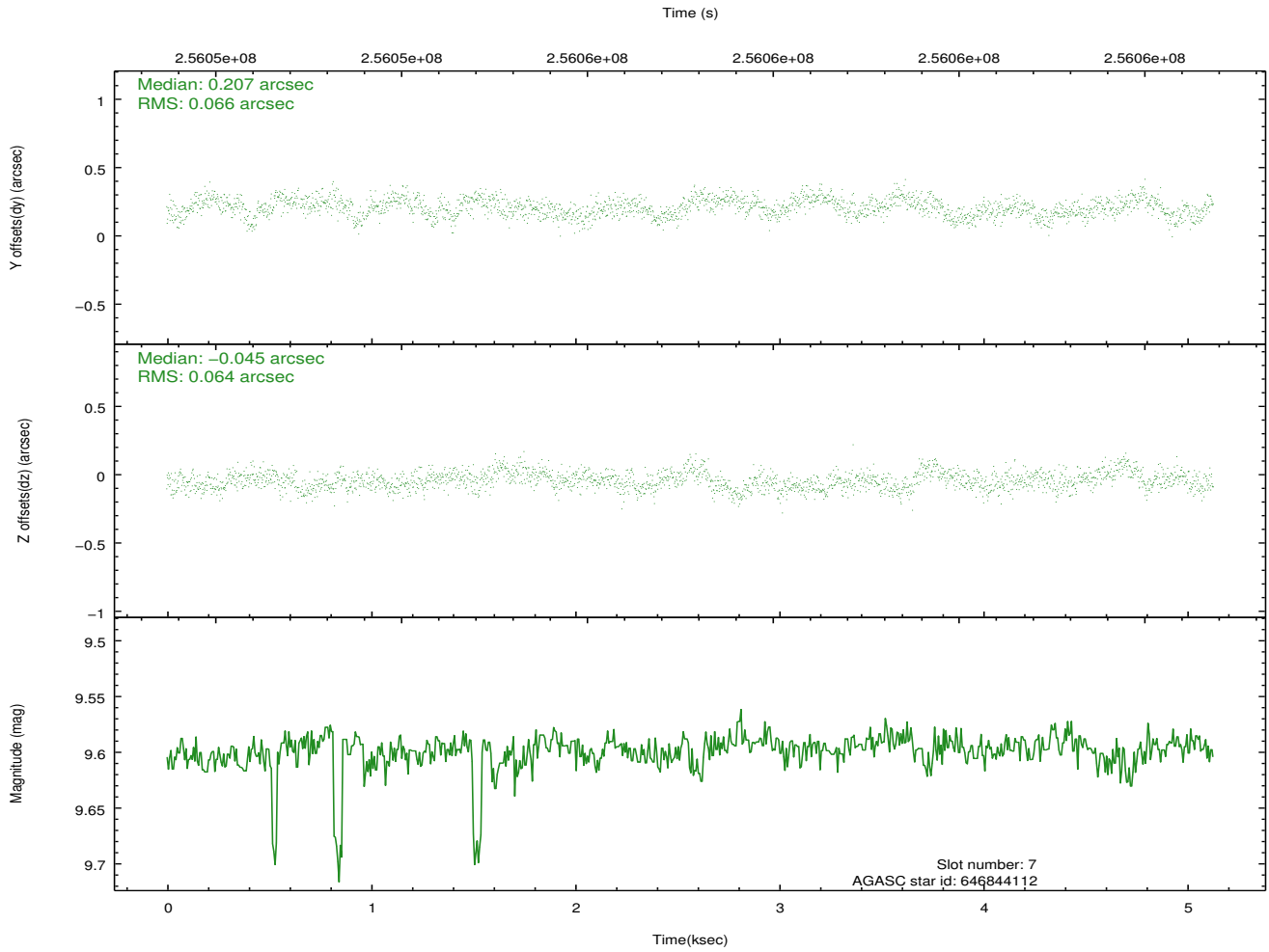
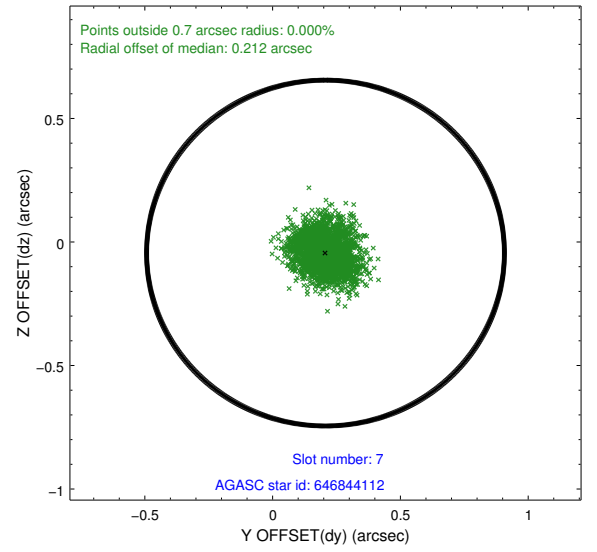
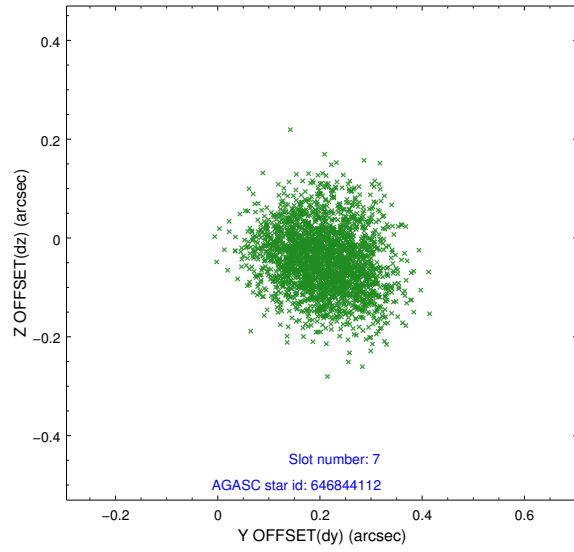
2.4.3 Slot 5



2.4.4 Slot 6

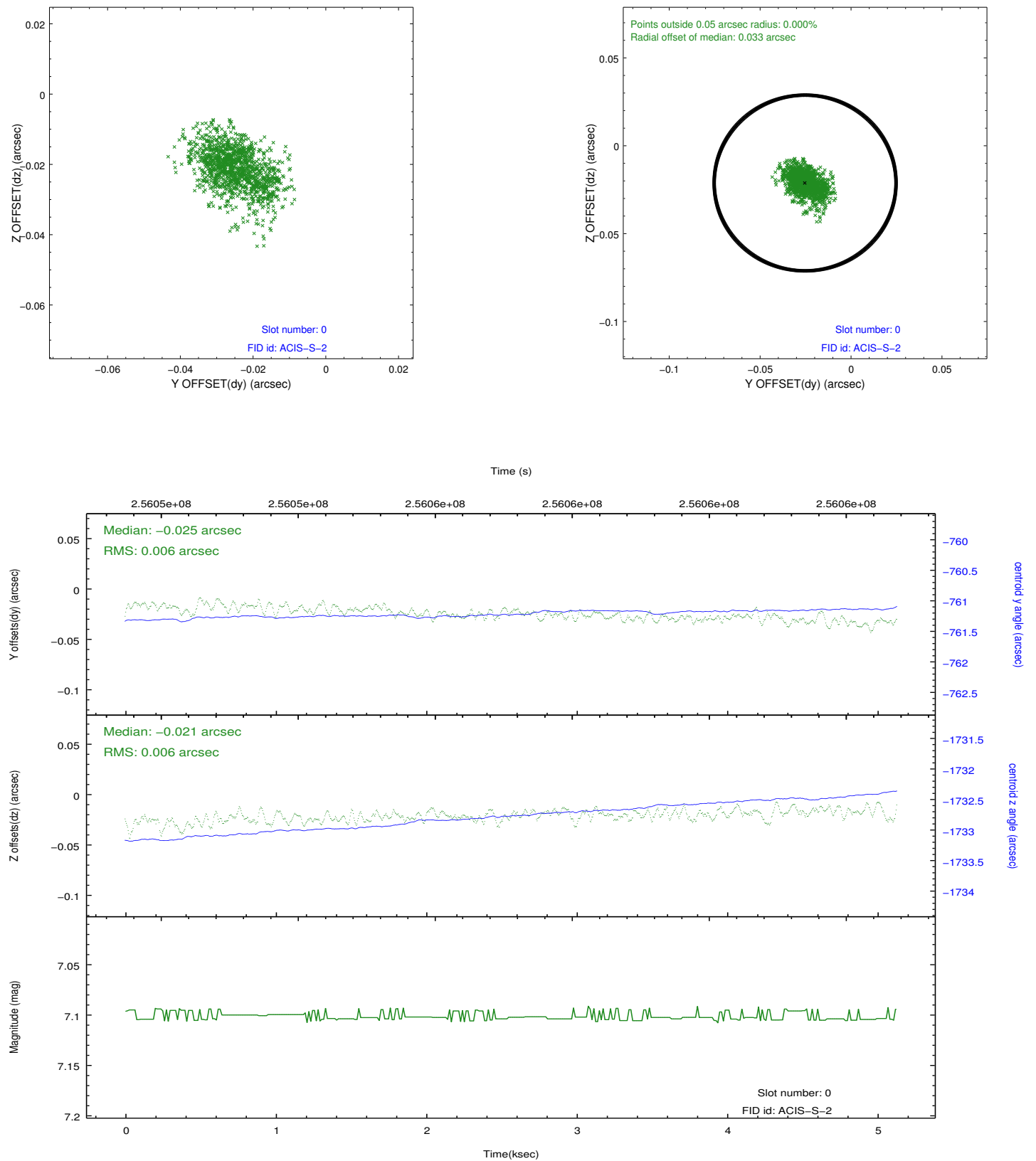


2.4.5 Slot 7

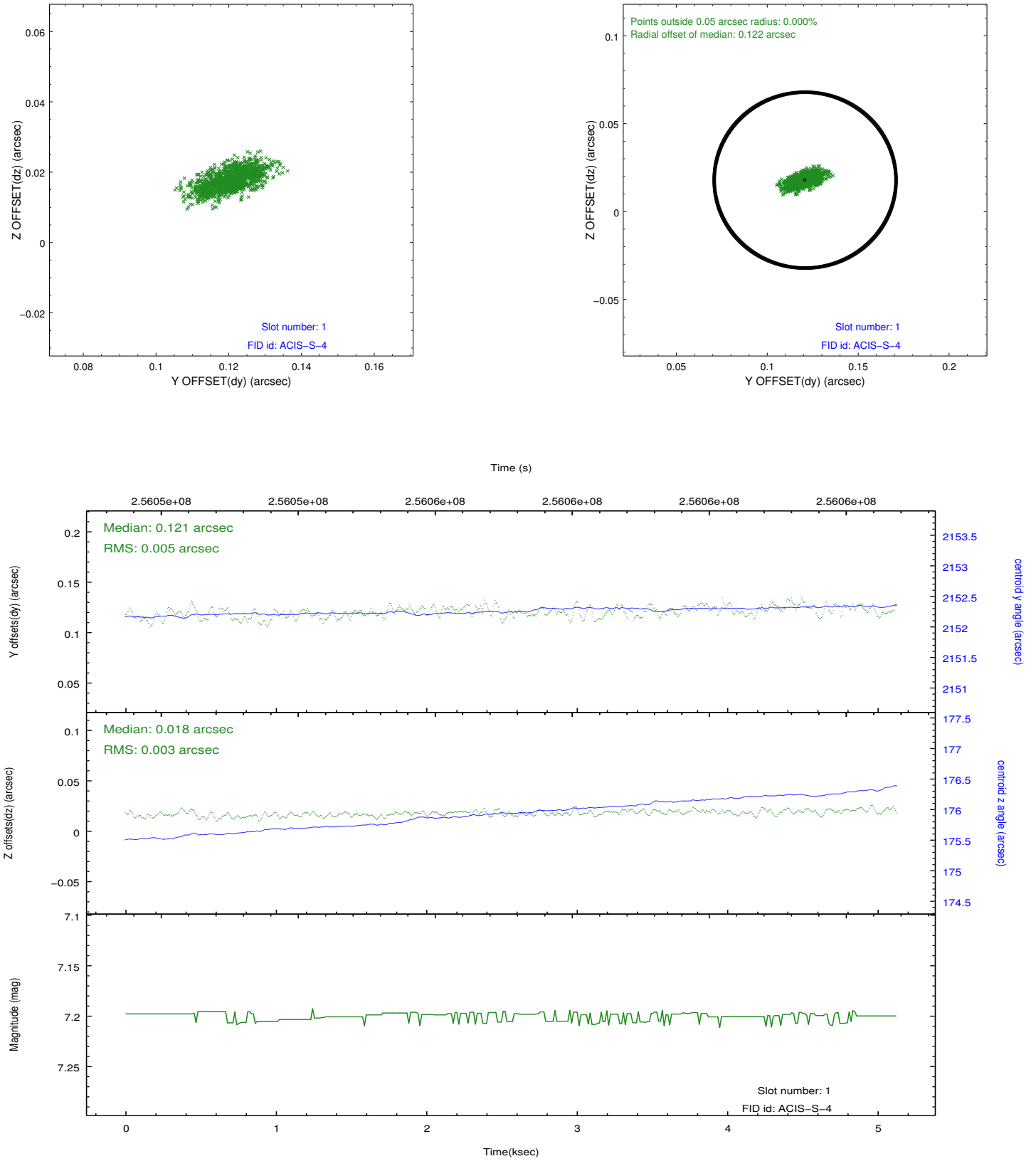


2.5 FID Slots

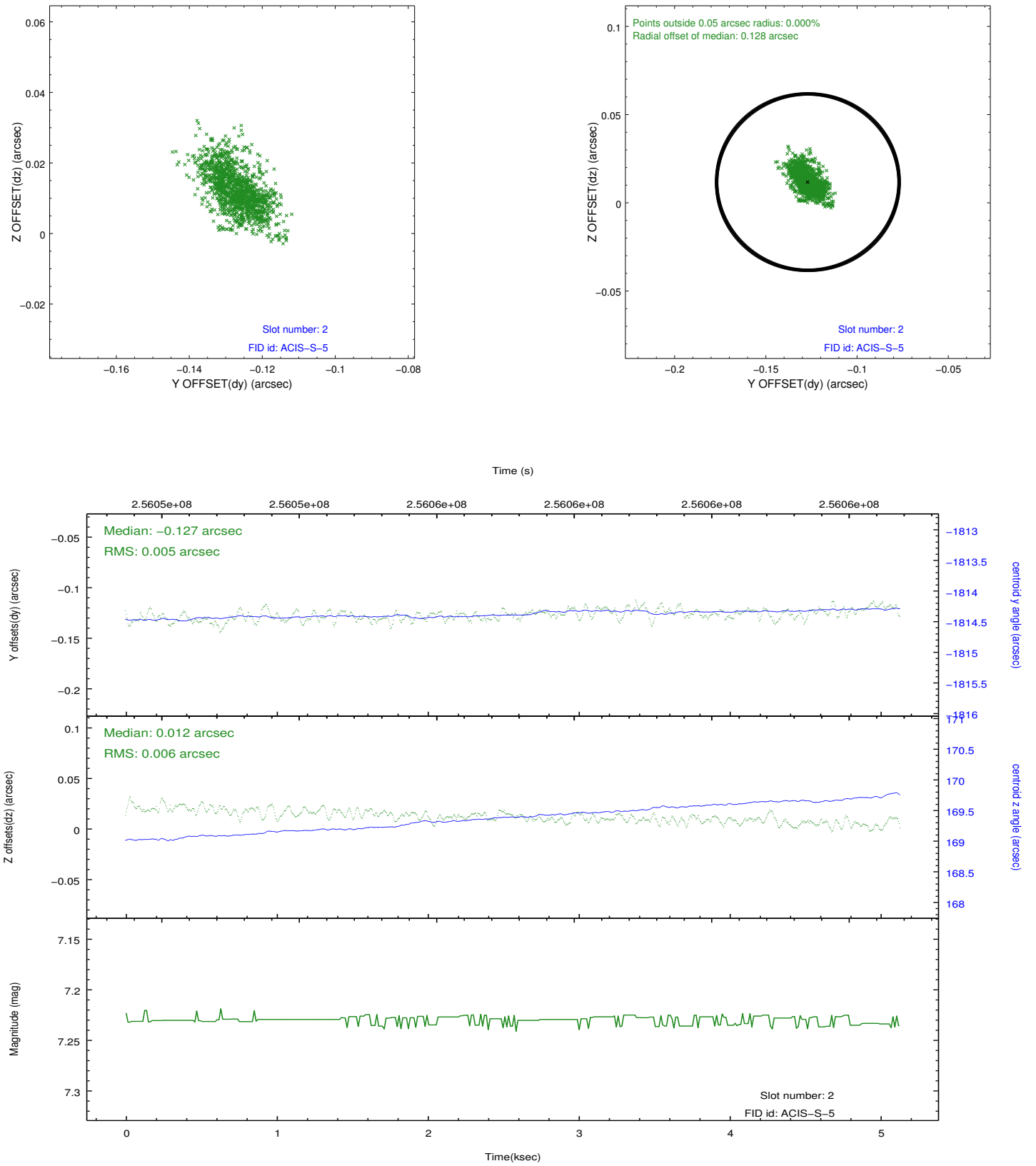
2.5.1 Slot 0



2.5.2 Slot 1



2.5.3 Slot 2



A Summary

A.1 Status

V&V Scientist	Beth Sundheim
V&V Date (YYYY-MM-DD)	2012.03.27
V&V Edition	1
V&V Disposition and Status	OK
V&V Charge Time	5.12639998

A.2 Comments