

# V&V Reference Report

## L2 ASCDS Version : 8.4.3.1

Observation 6985 - L2 Version 2  
Chandra X-Ray Center

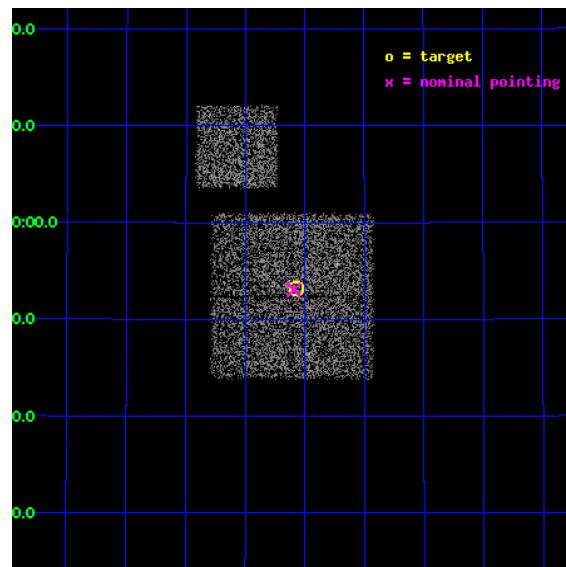
L2 Processing Date : Apr 12 2012

## Contents

<b>1</b>	<b>Front</b>	<b>2</b>
<b>2</b>	<b>OBI</b>	<b>3</b>
2.1	OBI . . . . .	3
2.1.1	Images . . . . .	3
2.1.2	Bias . . . . .	3
2.1.3	Parameters . . . . .	4
2.1.4	Events . . . . .	4
2.2	Compared Parameters . . . . .	5
2.3	Aspect . . . . .	6
2.4	Star Slots . . . . .	9
2.4.1	Slot 3 . . . . .	9
2.4.2	Slot 4 . . . . .	10
2.4.3	Slot 5 . . . . .	11
2.4.4	Slot 6 . . . . .	12
2.4.5	Slot 7 . . . . .	13
2.5	FID Slots . . . . .	14
2.5.1	Slot 0 . . . . .	14
2.5.2	Slot 1 . . . . .	15
2.5.3	Slot 2 . . . . .	16
<b>A</b>	<b>Summary</b>	<b>17</b>
A.1	Status . . . . .	17
A.2	Comments . . . . .	17

# 1 Front

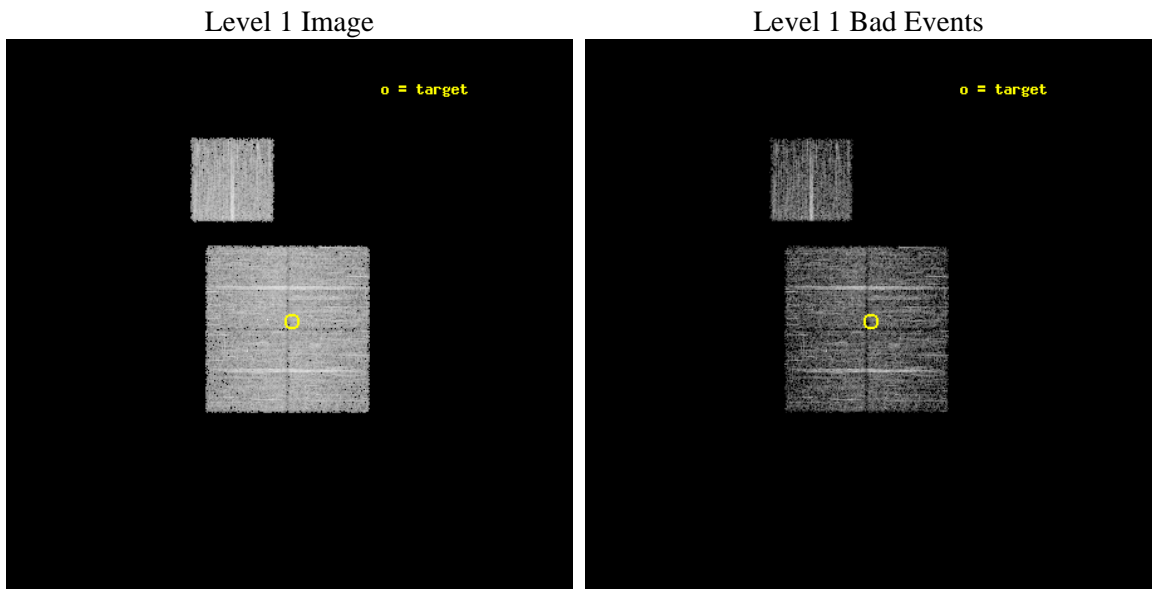
seq_num	900401	Sequence number
obs_id	6985	Observation id
title	Chandra Large Scale Survey of the NOAO Bootes Deep Field (A)	Propo
observer	Dr. Stephen Murray	Principal investigator
object	Bootes2 7	Source name
dtcycle	0	&#160
cycle	P	events from which exps? Prim/Second/Both
ra_targ	216.517729	Observer's specified target RA [deg]
dec_targ	33.885997	Observer's specified target Dec [deg]
ra_nom	216.52288781412	Nominal RA [deg]
dec_nom	33.884236316842	Nominal Dec [deg]
roll_nom	0.20579811673374	Nominal Roll [deg]
revision	2	Processing version of data
ontime	4693.0749748945	Sum of GTIs [s]
livetime	4631.756495356	Livetime [s]
ontime0	4692.9518848062	Sum of GTIs [s]
ontime1	4689.8519245386	Sum of GTIs [s]
ontime2	4693.0339348912	Sum of GTIs [s]
ontime3	4693.0749748945	Sum of GTIs [s]
ontime6	4692.9108148813	Sum of GTIs [s]
l2events	13744	Number of level 2 events



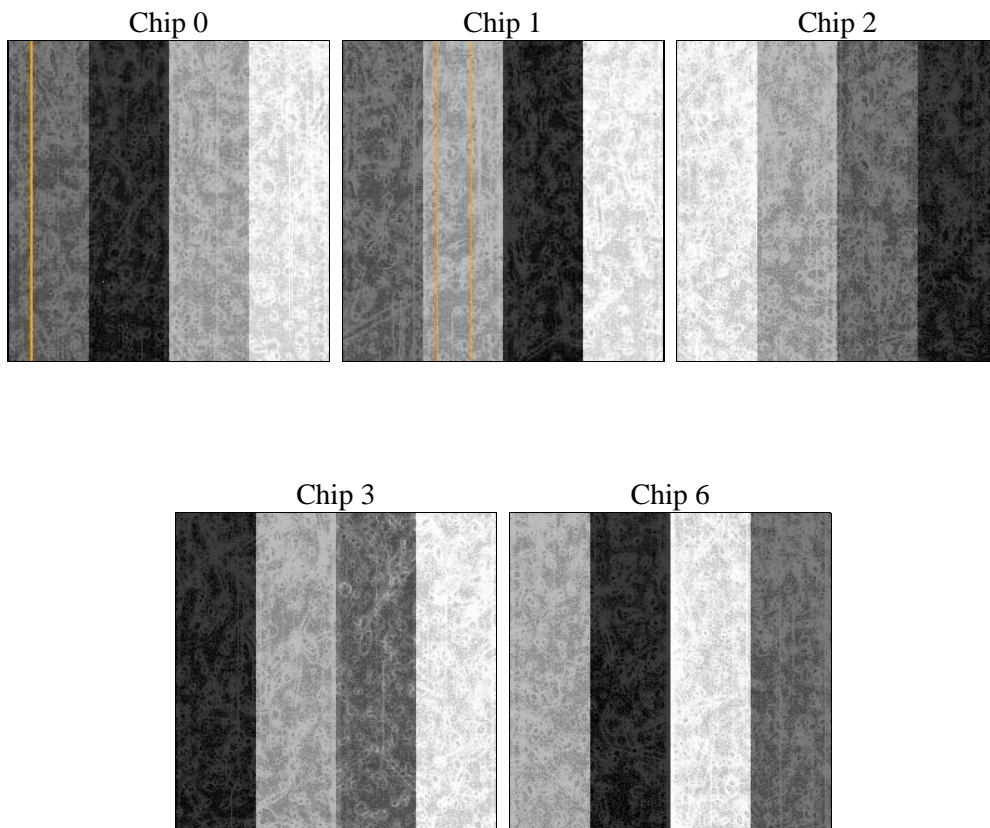
## 2 OBI

### 2.1 OBI

#### 2.1.1 Images



#### 2.1.2 Bias



### 2.1.3 Parameters

obi_num	0	Obi number	sched_exp_time	4916.911000	[s] Scheduled observation exposure time
ascdsver	8.4.3.1	Processing system revision	ontime	4693.0749748945	Sum of GTIs [s]
caldsver	4.4.9	&#160	ontime0	4692.9518848062	Sum of GTIs [s]
date	2012-04-12T22:57:25	Date and time of file creation	ontime1	4689.8519245386	Sum of GTIs [s]
revision	2	Processing version of data	ontime2	4693.0339348912	Sum of GTIs [s]
			ontime3	4693.0749748945	Sum of GTIs [s]
			ontime6	4692.9108148813	Sum of GTIs [s]
			l1events	168611	Number of level 1 events

### 2.1.4 Events

	ccd 0	ccd 1	ccd 2	ccd 3	ccd 6
level 1 events	31307	32657	36082	33995	34570
rejected events	28017	29246	32628	30769	31157
rejected %	89%	89%	90%	90%	90%

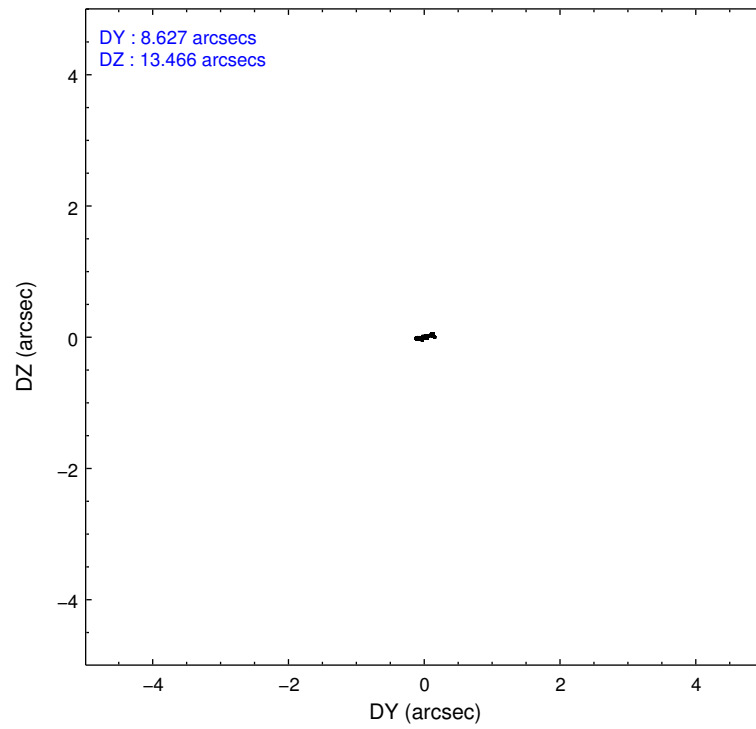
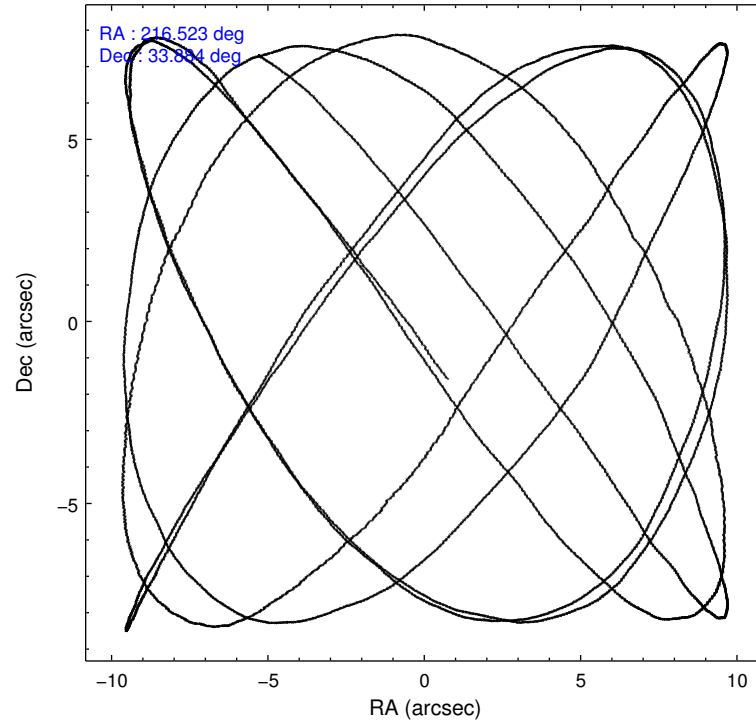
	ccd 0	ccd 1	ccd 2	ccd 3	ccd 6
grade 0 events	1183	1141	1365	1256	1300
	3%	3%	3%	3%	3%
grade 1 events	22	15	20	19	17
	0%	0%	0%	0%	0%
grade 2 events	773	714	794	687	693
	2%	2%	2%	2%	2%
grade 3 events	387	448	350	352	390
	1%	1%	0%	1%	1%
grade 4 events	347	388	390	357	366
	1%	1%	1%	1%	1%
grade 5 events	939	1121	909	1164	1171
	2%	3%	2%	3%	3%
grade 6 events	602	726	562	577	671
	1%	2%	1%	1%	1%
grade 7 events	27054	28104	31692	29583	29962
	86%	86%	87%	87%	86%

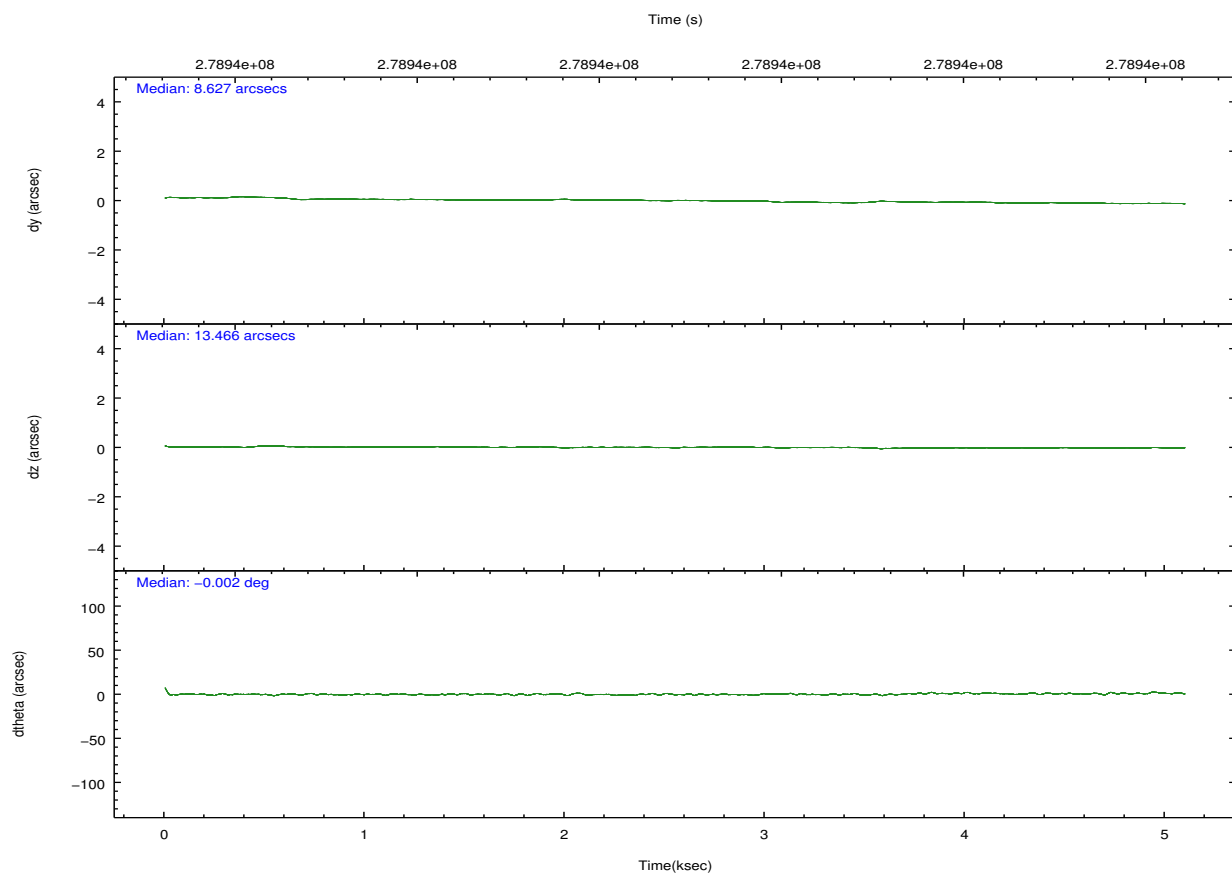
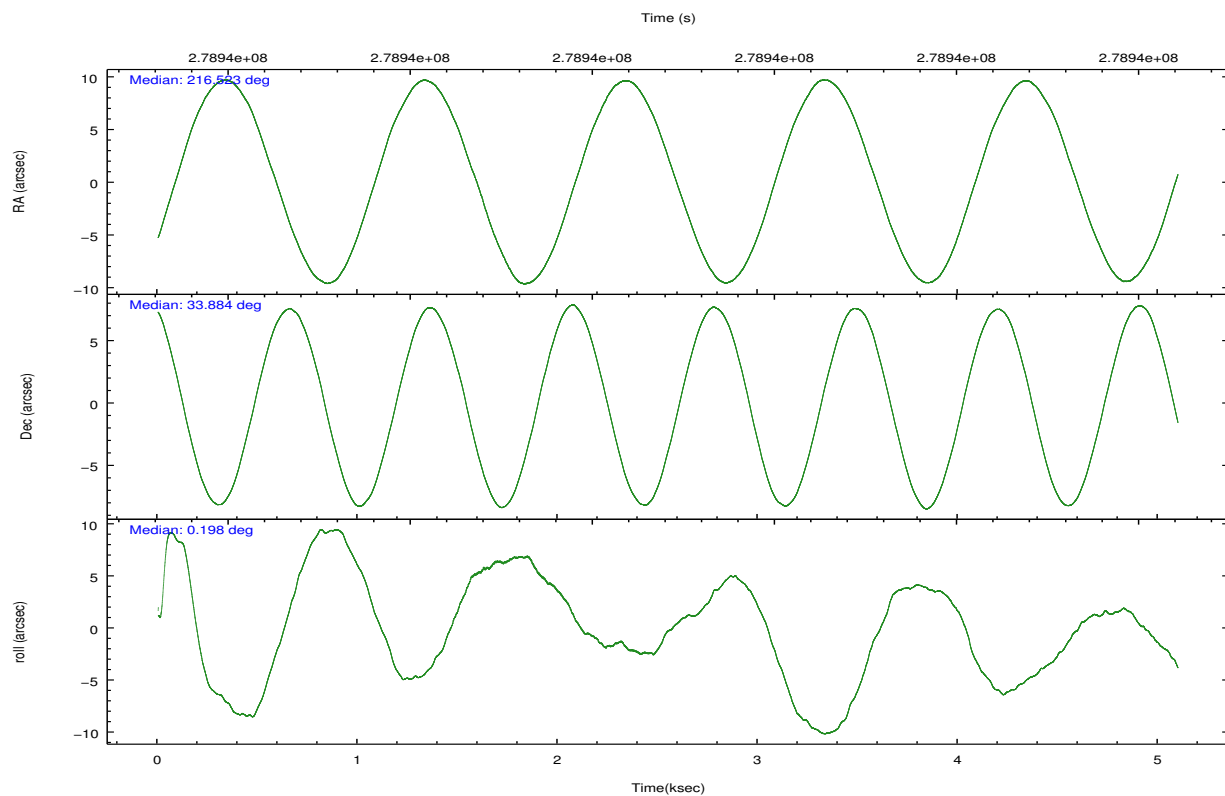


## 2.2 Compared Parameters

Parameter	Planned	Actual	Parameter	Planned	Actual
Instrument	ACIS	ACIS	Obspar format version number	7	7
Detector	ACIS-01236	ACIS-01236	Obspar file type	PREDICTED	ACTUAL
Grating	NONE	NONE	Obspar update status	NONE	UPDATED
Data mode	VFAINT	VFAINT	Number of optional ACIS chips dropped	0	0
Observation mode	POINTING	POINTING	On-chip summing requested	N	N
[deg] Pointing RA	216.494439	216.5228878141206	Subarray requested	NONE	NONE
[deg] Pointing Dec	33.870335	33.88423631684227	Alternating exposures requested	N	N
[deg] Pointing Roll	0.012981	0.2057981167337433	[s] Primary exposure time	0.000000	3.1
[mm] SIM focus pos	-0.782348	-0.7809083437167272			
[mm] SIM defocus	0	0.001439871863259334			
[mm] SIM translation stage pos	-233.592463	-233.5874344608287			
[mm] SIM translation stage offset	0	-0.005018542100998502			
[s] Observation start time (MET)	278936060.184000	278935683.81583			
Observation start date	2006-11-03T10:13:15	2006-11-03T10:08:03			
[s] Observation end time (MET)	278940977.184000	278941218.81609			
Observation end date	2006-11-03T11:35:12	2006-11-03T11:40:18			
Read mode	TIMED	TIMED			

## 2.3 Aspect



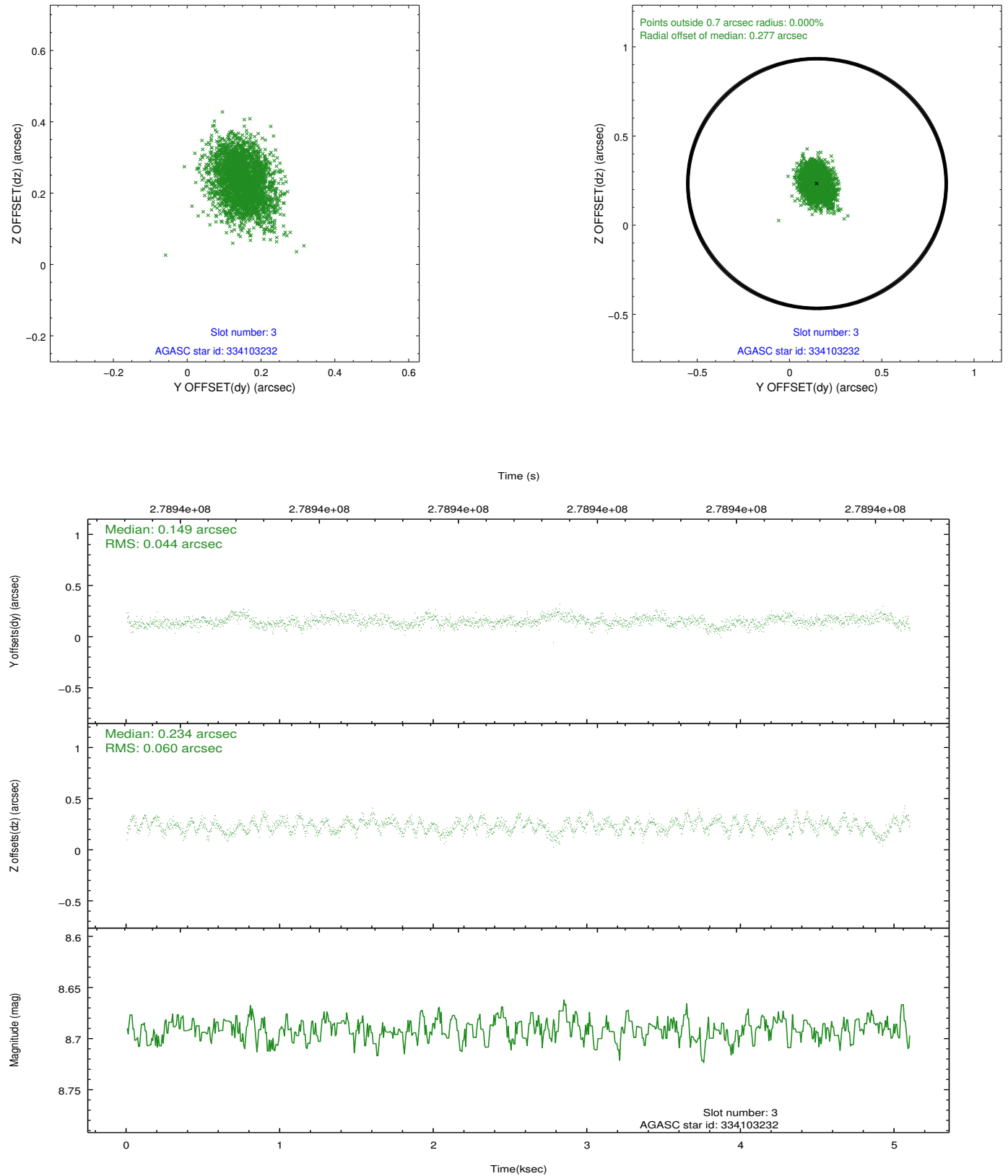


### Slot Statistics

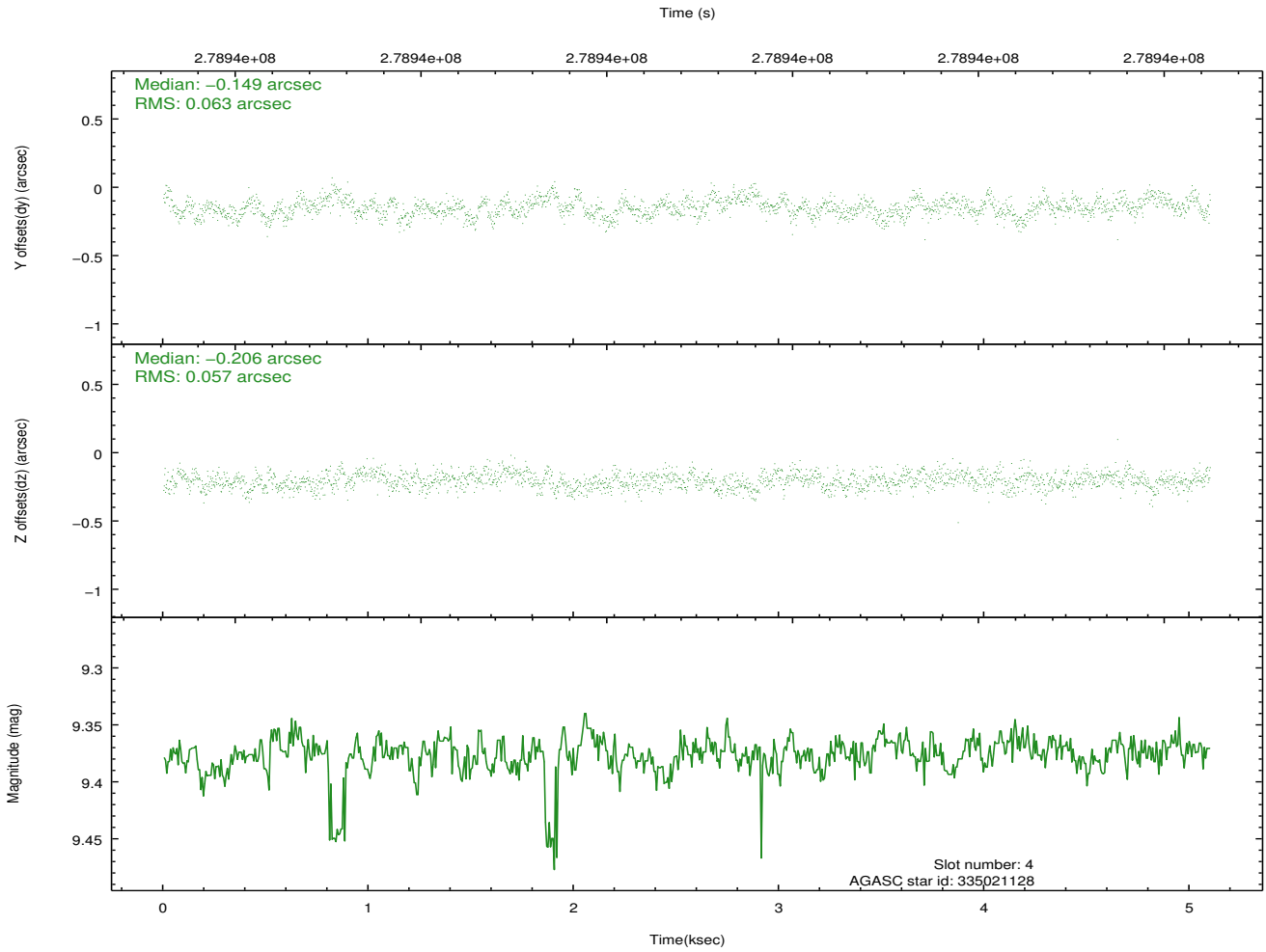
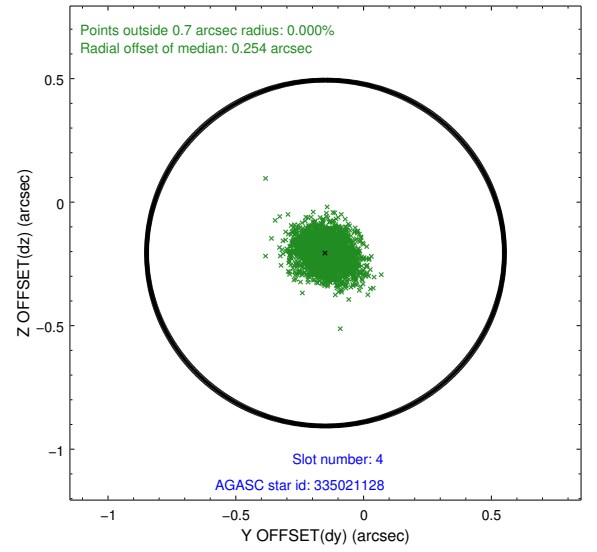
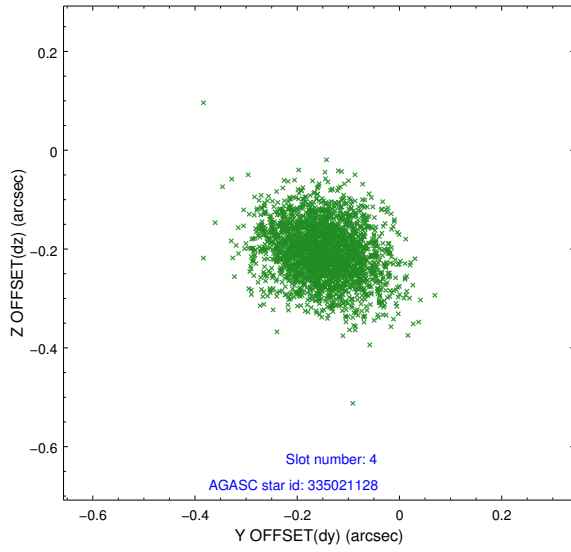
slot	status	id	mag	n_pts	med_dy	med_dz	dr1	dr2	ra	dec	mean_y	mean_z
0	FID	ACIS-I-1	7.24	1244	-0.024	0.013	0.010	0.017	0.000000	0.000000	930.99	-837.02
1	FID	ACIS-I-4	7.19	1243	0.175	0.026	0.012	0.017	0.000000	0.000000	2151.90	1062.20
2	FID	ACIS-I-5	7.23	1244	-0.249	0.031	0.008	0.015	0.000000	0.000000	-1815.70	1061.43
3	GUIDE	334103232	8.69	2486	0.149	0.234	0.079	0.127	215.850271	33.571936	-1932.05	-1067.78
4	GUIDE	335021128	9.38	2482	-0.149	-0.206	0.089	0.147	216.159551	34.422539	-995.20	1989.07
5	GUIDE	335024096	10.61	2473	0.408	-0.292	0.195	0.313	216.160719	34.374830	-991.33	1818.47
6	GUIDE	335028240	9.16	2487	-0.012	0.221	0.090	0.148	216.746851	33.385009	757.88	-1745.11
7	GUIDE	335028696	9.17	2486	-0.389	0.049	0.094	0.154	217.260519	33.844112	2290.56	-86.70

## 2.4 Star Slots

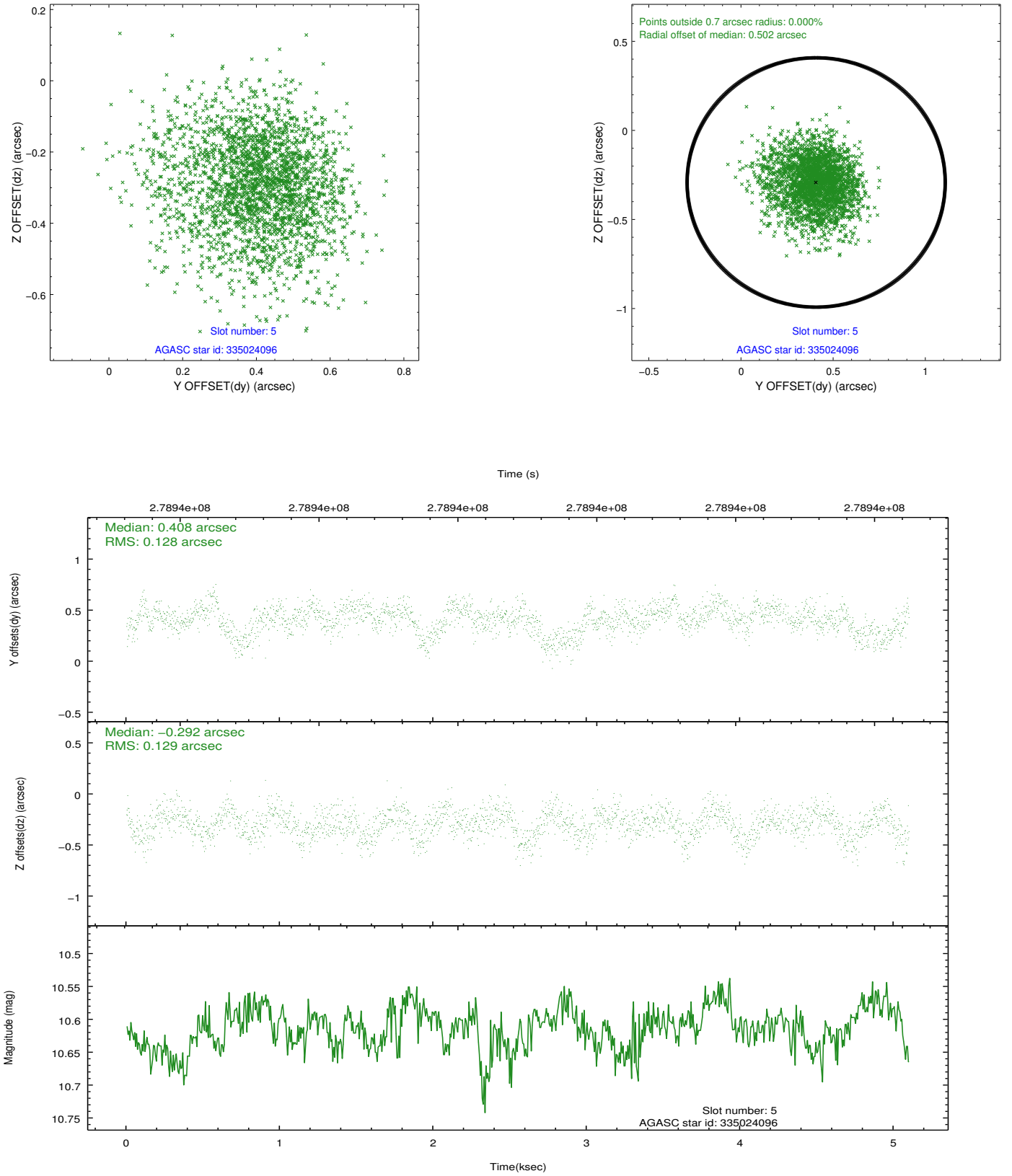
### 2.4.1 Slot 3



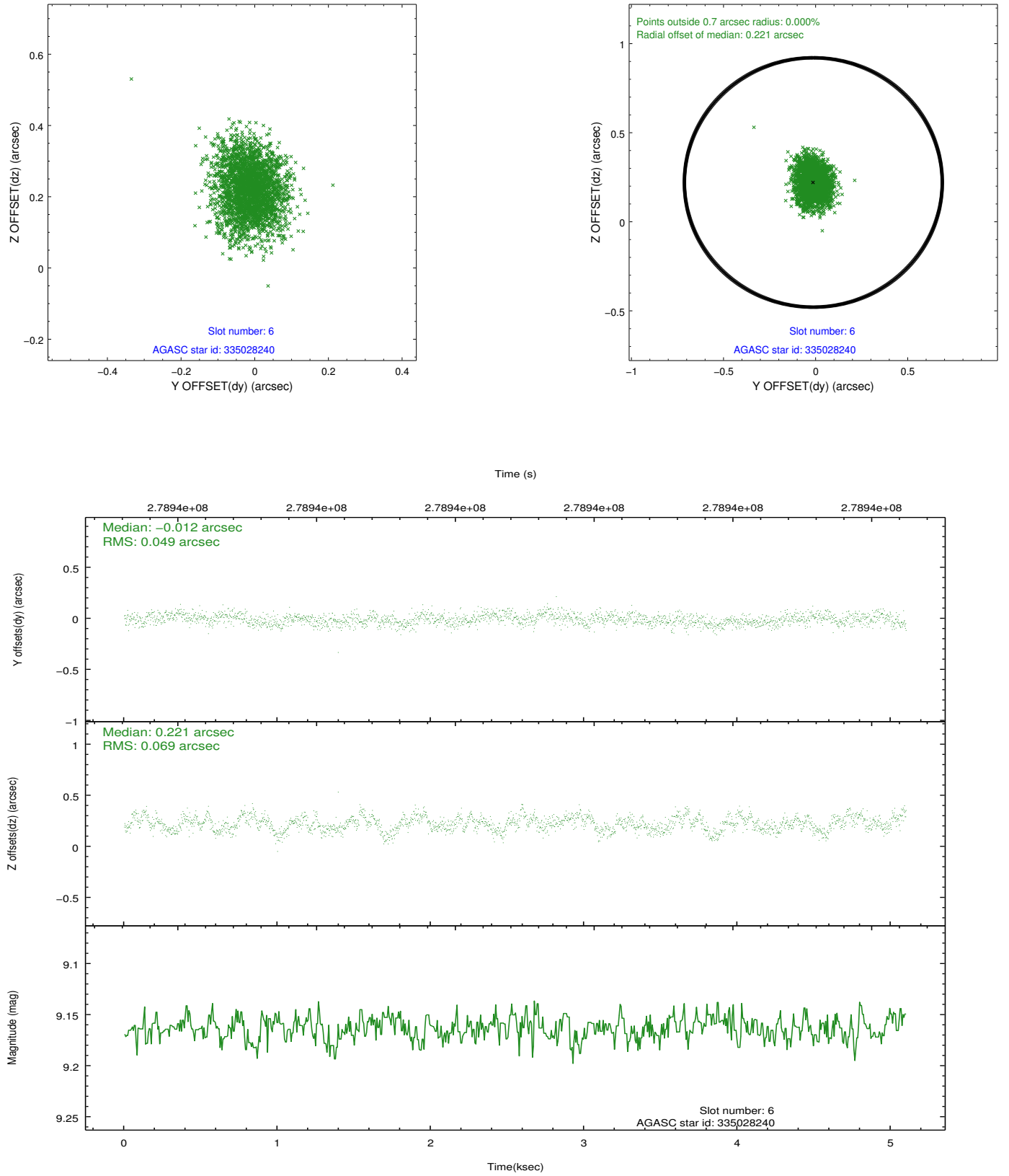
## 2.4.2 Slot 4



### 2.4.3 Slot 5

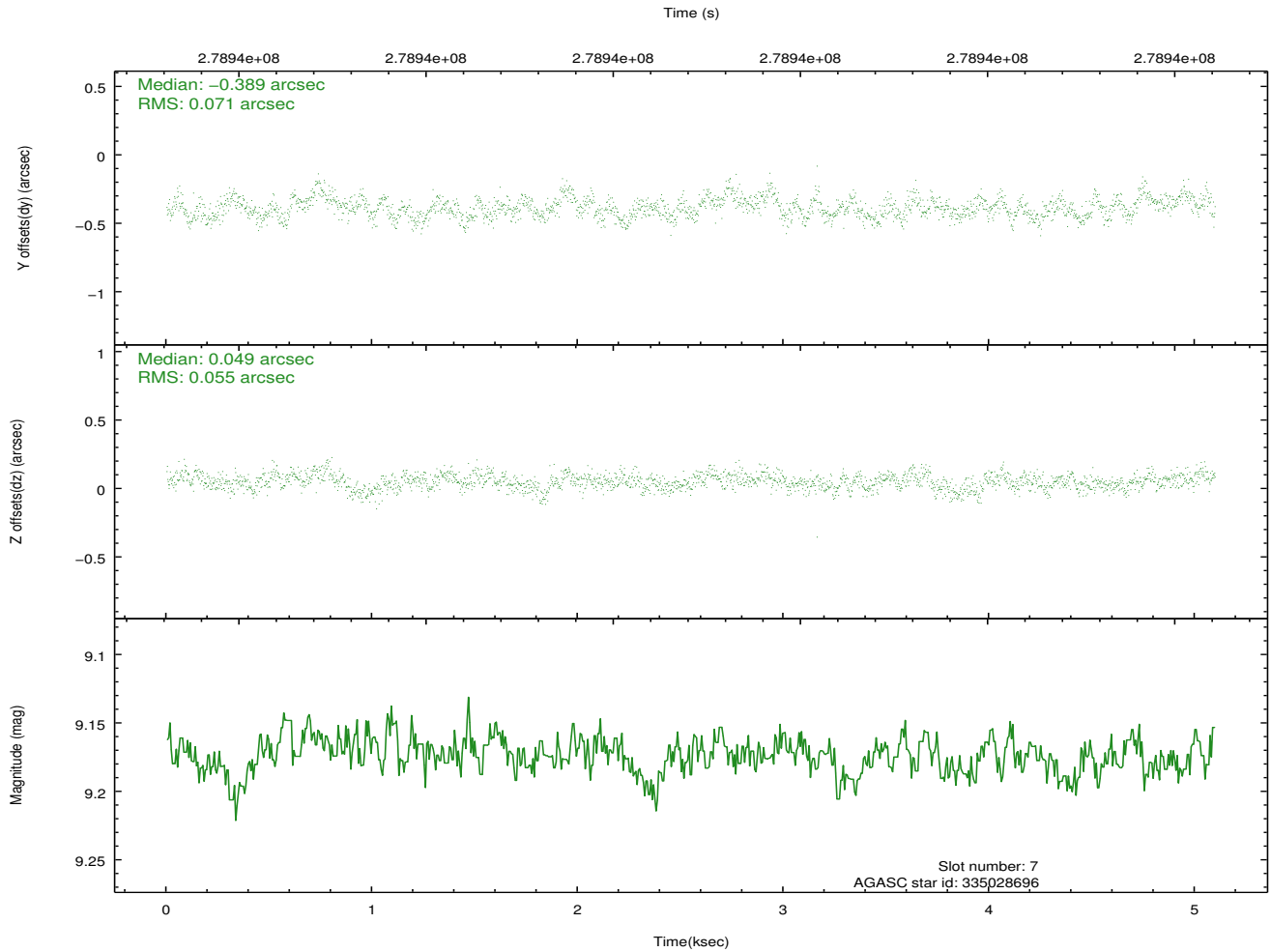
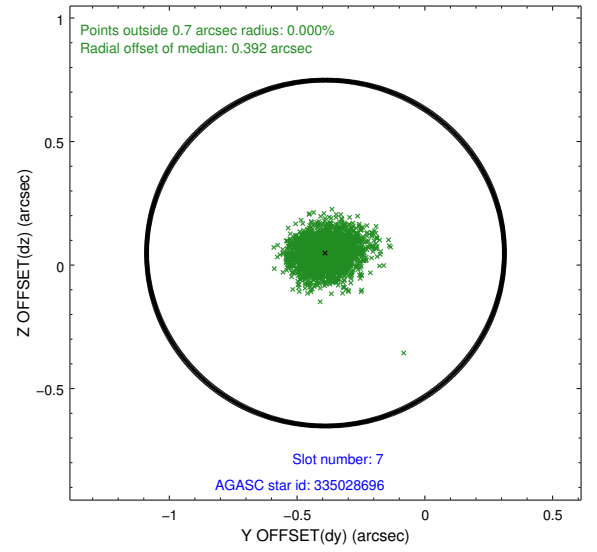
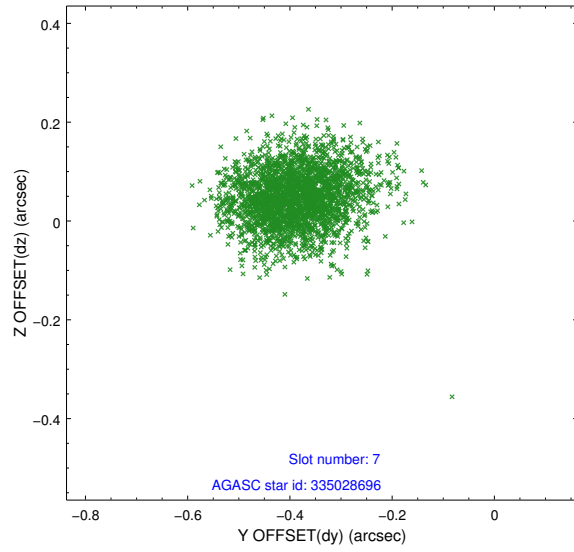


## 2.4.4 Slot 6



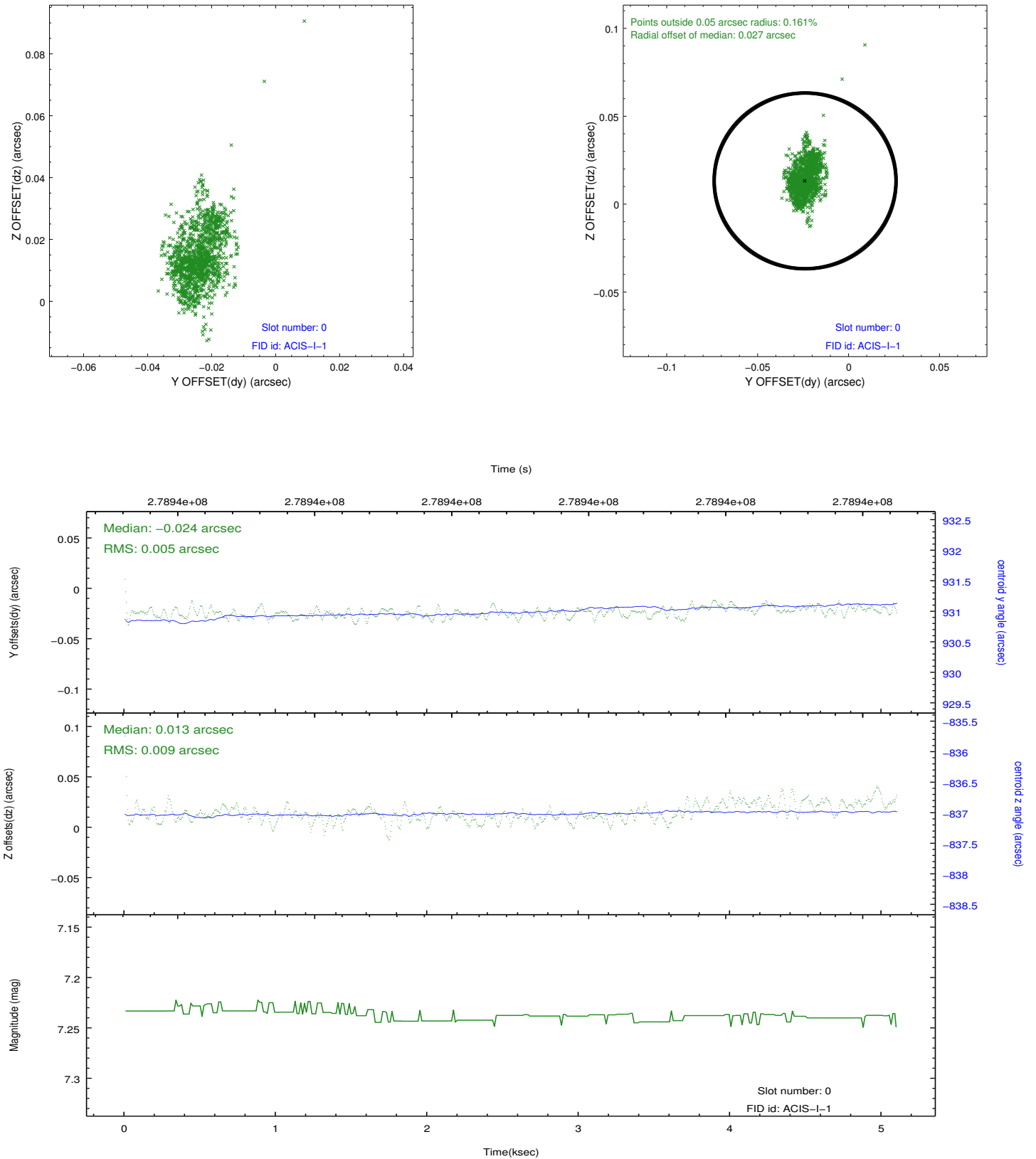


## 2.4.5 Slot 7

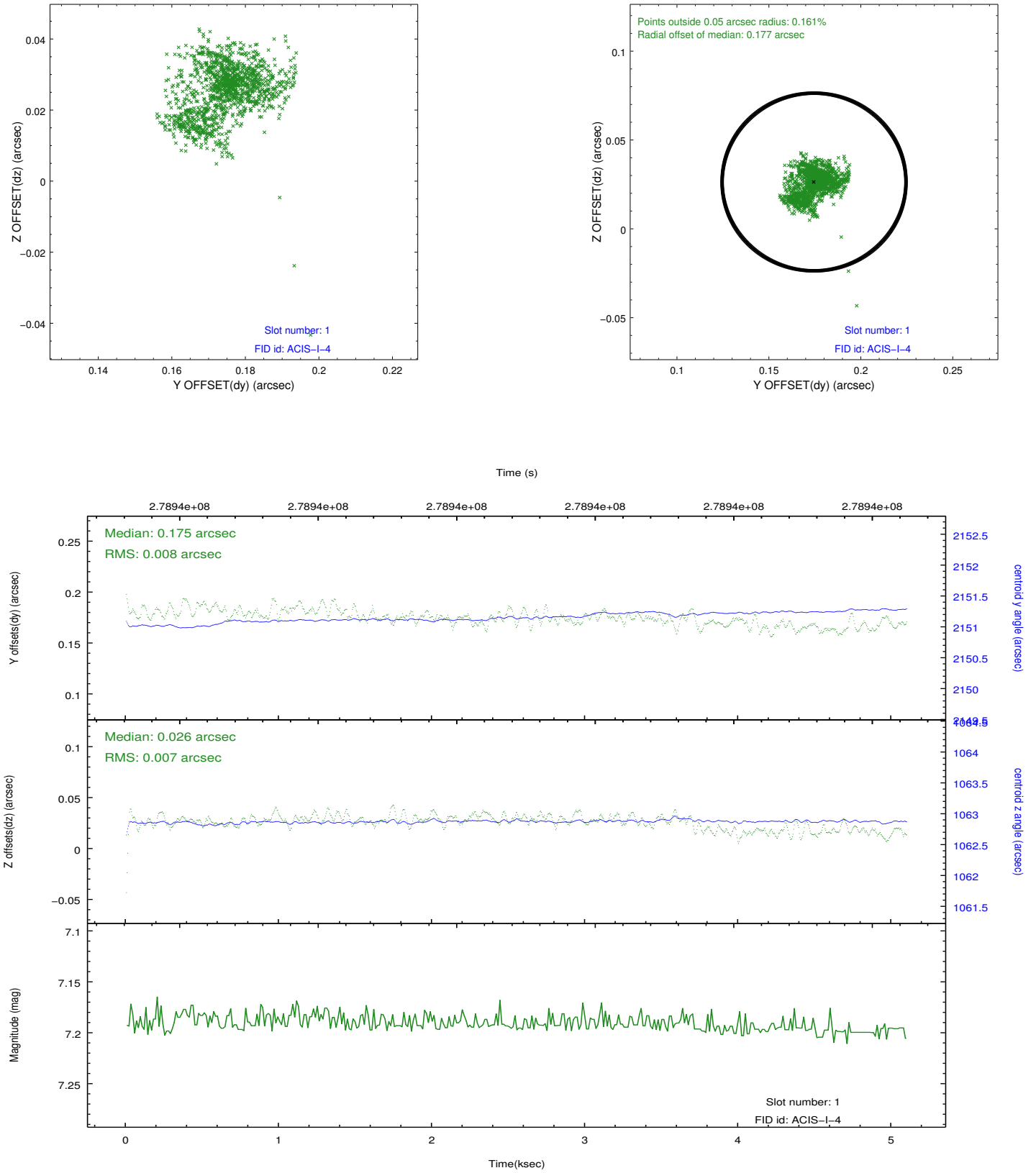


## 2.5 FID Slots

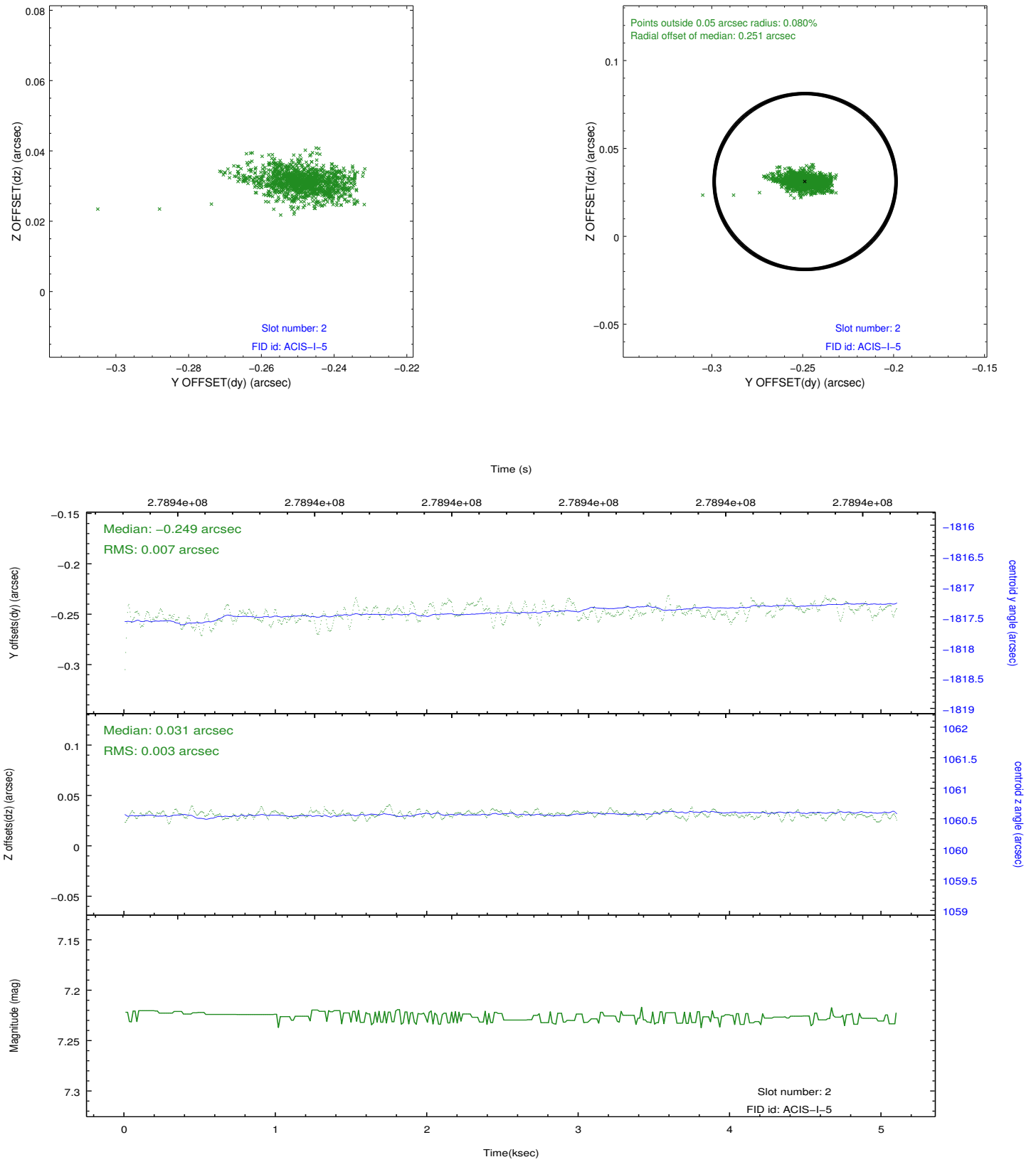
### 2.5.1 Slot 0



## 2.5.2 Slot 1



### 2.5.3 Slot 2



## A Summary

### A.1 Status

V&V Scientist	Joy Nichols
V&V Date (YYYY-MM-DD)	2012.04.13
V&V Edition	1
V&V Disposition and Status	OK
V&V Charge Time	4.69340003

### A.2 Comments