

V&V Reference Report

L2 ASCDS Version : 8.4.3.1

Observation 6705 - L2 Version 2
Chandra X-Ray Center

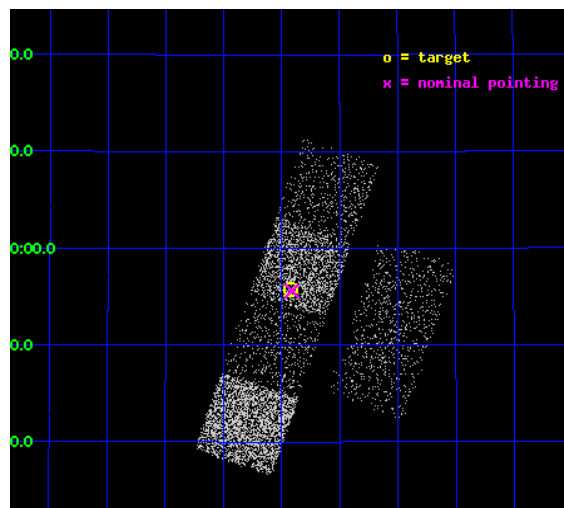
L2 Processing Date : Apr 9 2012

Contents

1	Front	2
2	OBI	3
2.1	OBI	3
2.1.1	Images	3
2.1.2	Bias	3
2.1.3	Parameters	4
2.1.4	Events	4
2.2	Compared Parameters	5
2.3	Aspect	6
2.4	Star Slots	9
2.4.1	Slot 3	9
2.4.2	Slot 4	10
2.4.3	Slot 5	11
2.4.4	Slot 6	12
2.4.5	Slot 7	13
2.5	FID Slots	14
2.5.1	Slot 0	14
2.5.2	Slot 1	15
2.5.3	Slot 2	16
A	Summary	17
A.1	Status	17
A.2	Comments	17

1 Front

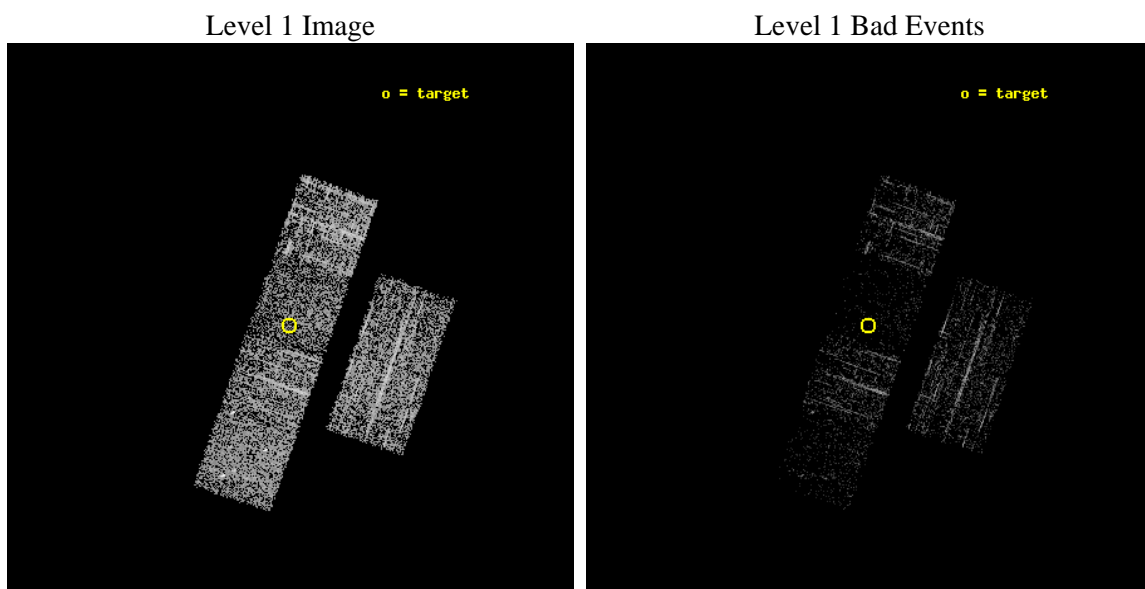
seq_num	500656	Sequence number
obs_id	6705	Observation id
title	A High Purity Discovery Program for Isolated Neutron Stars	Proposa
observer	Dr. Scott Anderson	Principal investigator
object	1RXS J151855.1+355543	Source name
dtcycle	0	
cycle	P	events from which exps? Prim/Second/Both
ra_targ	229.729583	Observer's specified target RA [deg]
dec_targ	35.928611	Observer's specified target Dec [deg]
ra_nom	229.72804874563	Nominal RA [deg]
dec_nom	35.926852404107	Nominal Dec [deg]
roll_nom	289.33779228219	Nominal Roll [deg]
revision	2	Processing version of data
ontime	1043.1999961734	Sum of GTIs [s]
livetime	1029.9903696822	Livetime [s]
ontime2	1043.1999961734	Sum of GTIs [s]
ontime3	1043.1999961734	Sum of GTIs [s]
ontime5	1043.1999961734	Sum of GTIs [s]
ontime6	1043.1999961734	Sum of GTIs [s]
ontime7	1043.1999961734	Sum of GTIs [s]
ontime8	1043.1999961734	Sum of GTIs [s]
l2events	7151	Number of level 2 events



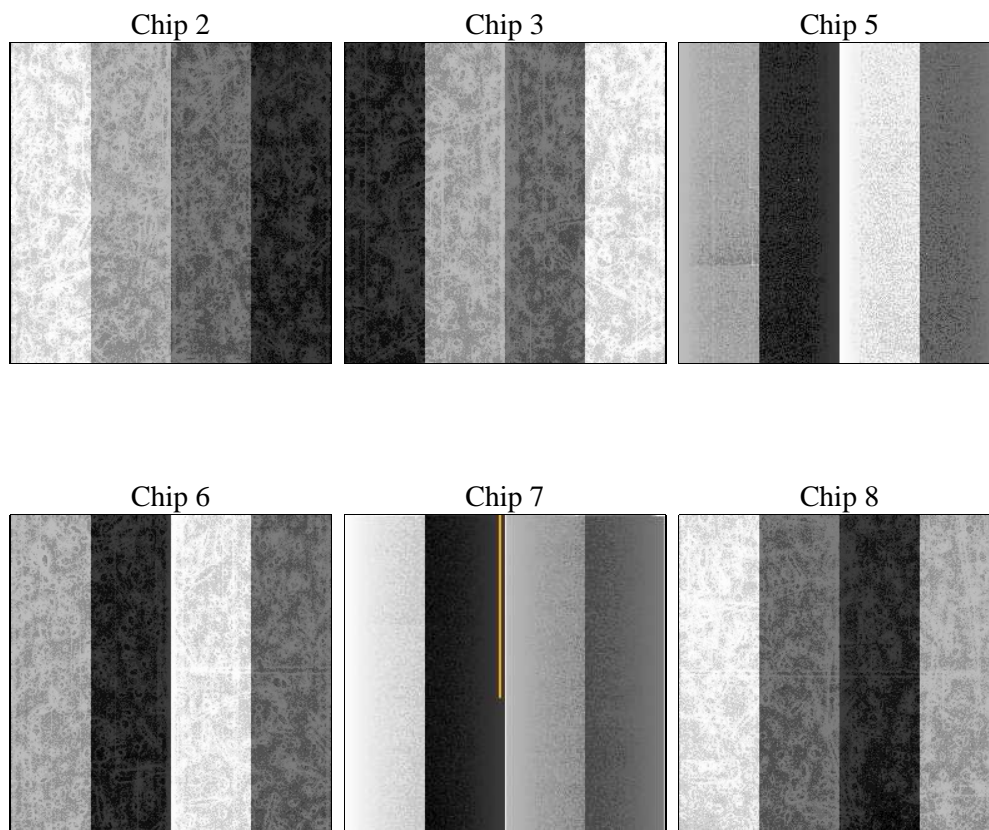
2 OBI

2.1 OBI

2.1.1 Images



2.1.2 Bias



2.1.3 Parameters

obi_num	0	Obi number	sched_exp_time	1000.000000	[s] Scheduled observation exposure time
ascdsver	8.4.3.1	Processing system revision	ontime	1043.1999961734	Sum of GTIs [s]
caldsver	4.4.9	 	ontime2	1043.1999961734	Sum of GTIs [s]
date	2012-04-09T15:31:07	Date and time of file creation	ontime3	1043.1999961734	Sum of GTIs [s]
revision	2	Processing version of data	ontime5	1043.1999961734	Sum of GTIs [s]
			ontime6	1043.1999961734	Sum of GTIs [s]
			ontime7	1043.1999961734	Sum of GTIs [s]
			ontime8	1043.1999961734	Sum of GTIs [s]
			l1events	37153	Number of level 1 events

2.1.4 Events

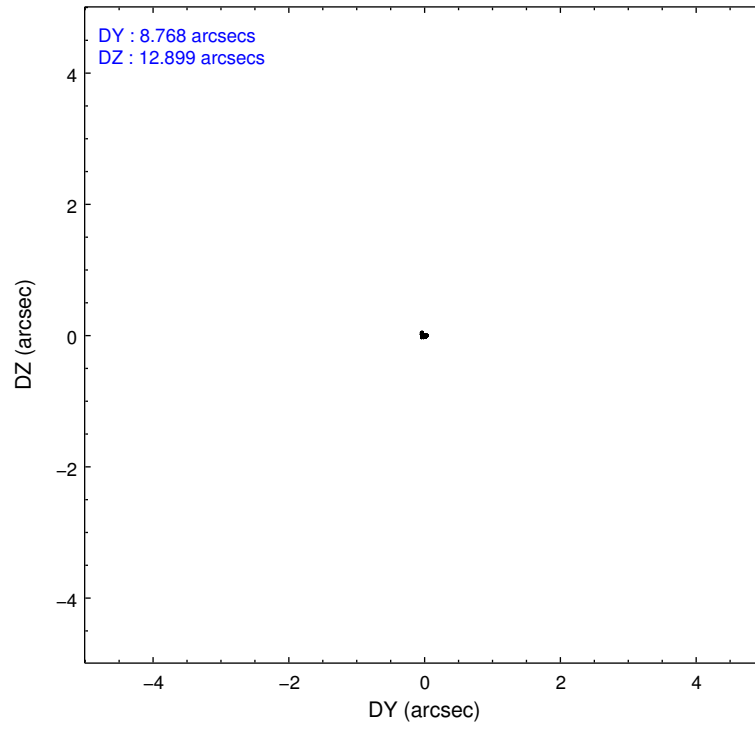
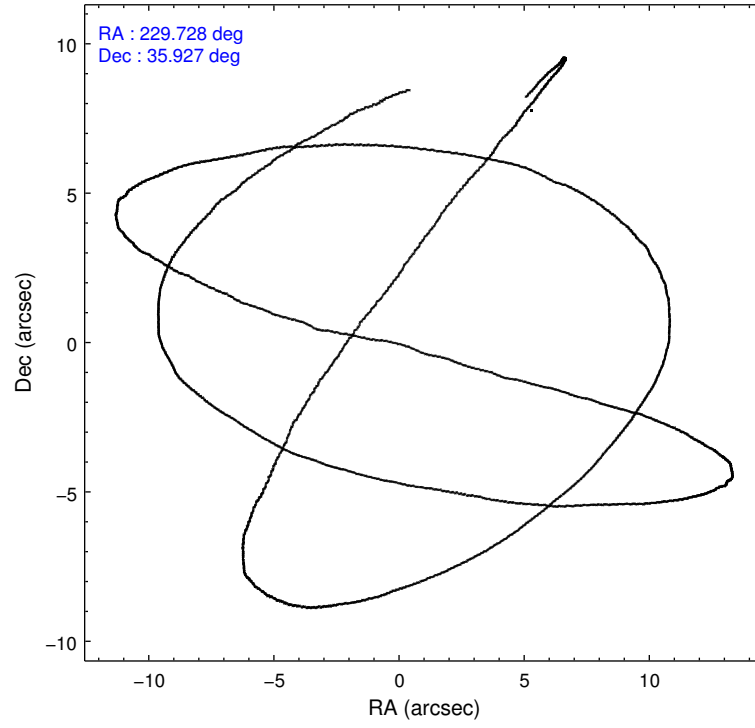
	ccd 2	ccd 3	ccd 5	ccd 6	ccd 7	ccd 8
level 1 events	7148	5650	6293	6265	3602	8195
rejected events	6551	5120	2356	5676	1505	6310
rejected %	91%	90%	37%	90%	41%	76%

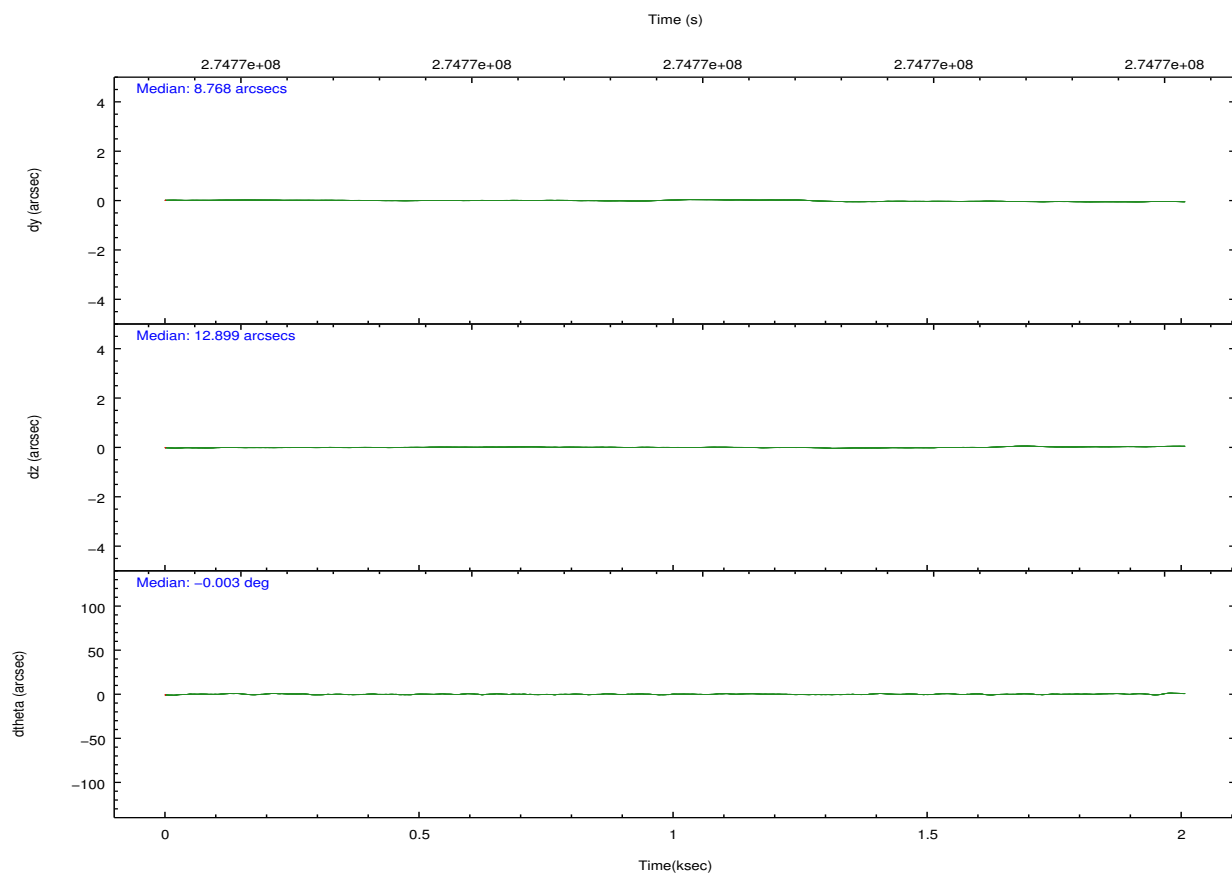
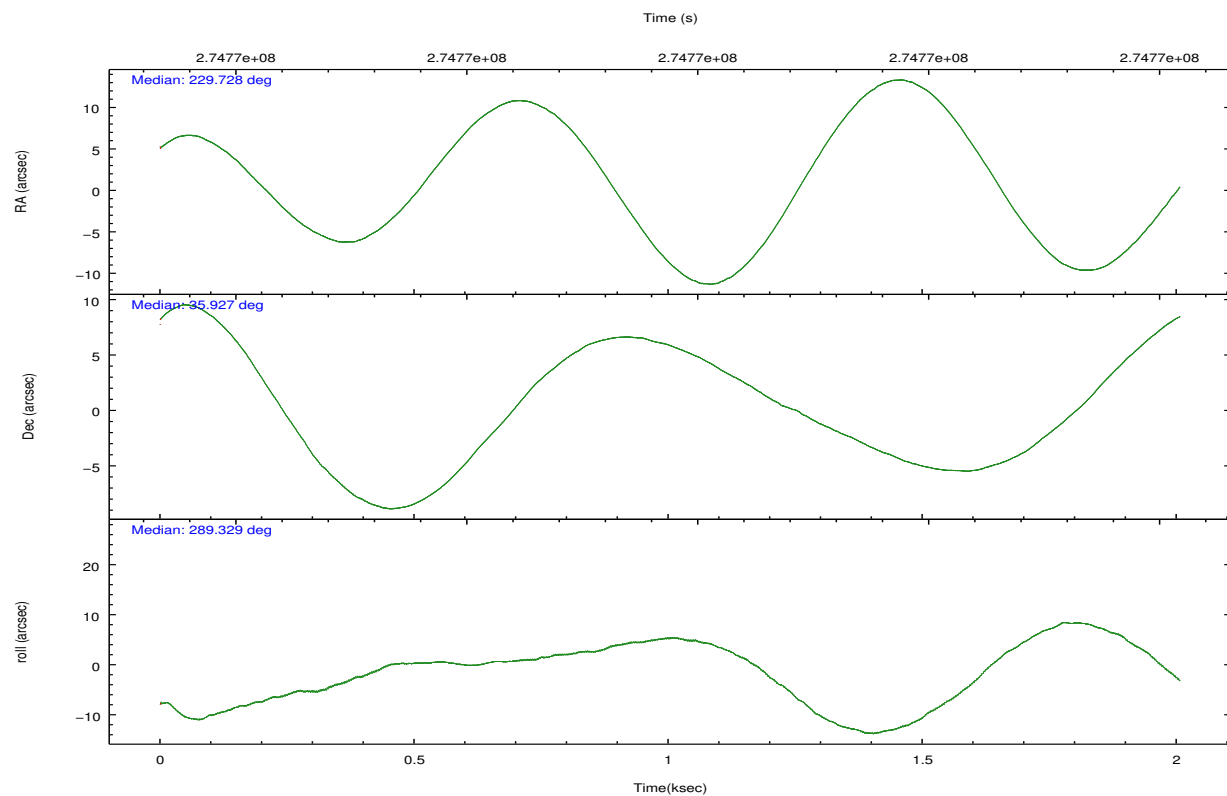
	ccd 2	ccd 3	ccd 5	ccd 6	ccd 7	ccd 8
grade 0 events	273	220	668	253	261	499
	3%	3%	10%	4%	7%	6%
grade 1 events	7	5	46	1	5	4
	0%	0%	0%	0%	0%	0%
grade 2 events	115	104	1248	127	512	487
	1%	1%	19%	2%	14%	5%
grade 3 events	62	69	205	62	239	200
	0%	1%	3%	0%	6%	2%
grade 4 events	64	55	231	63	213	179
	0%	0%	3%	1%	5%	2%
grade 5 events	81	122	465	133	372	219
	1%	2%	7%	2%	10%	2%
grade 6 events	88	84	1618	88	883	524
	1%	1%	25%	1%	24%	6%
grade 7 events	6458	4991	1812	5538	1117	6083
	90%	88%	28%	88%	31%	74%

2.2 Compared Parameters

Parameter	Planned	Actual	Parameter	Planned	Actual
Instrument	ACIS	ACIS	Obspar format version number	7	7
Detector	ACIS-235678	ACIS-235678	Obspar file type	PREDICTED	ACTUAL
Grating	NONE	NONE	Obspar update status	NONE	UPDATED
Data mode	VFAINT	VFAINT	Number of optional ACIS chips dropped	0	0
Observation mode	POINTING	POINTING	On-chip summing requested	N	N
[deg] Pointing RA	229.702334	229.7280487456266	Subarray requested	NONE	NONE
[deg] Pointing Dec	35.944347	35.92685240410745	Alternating exposures requested	N	N
[deg] Pointing Roll	289.196265	289.3377922821898	[s] Primary exposure time	0.000000	3.2
[mm] SIM focus pos	-0.684267	-0.6828225247311905			
[mm] SIM defocus	0	0.001444936568705701			
[mm] SIM translation stage pos	-190.132523	-190.1425803651734			
[mm] SIM translation stage offset	0	0.01005778216563158			
[s] Observation start time (MET)	274767440.184000	274766026.15685			
Observation start date	2006-09-16T04:16:15	2006-09-16T03:53:46			
[s] Observation end time (MET)	274768440.184000	274769481.94452			
Observation end date	2006-09-16T04:32:55	2006-09-16T04:51:21			
Read mode	TIMED	TIMED			

2.3 Aspect



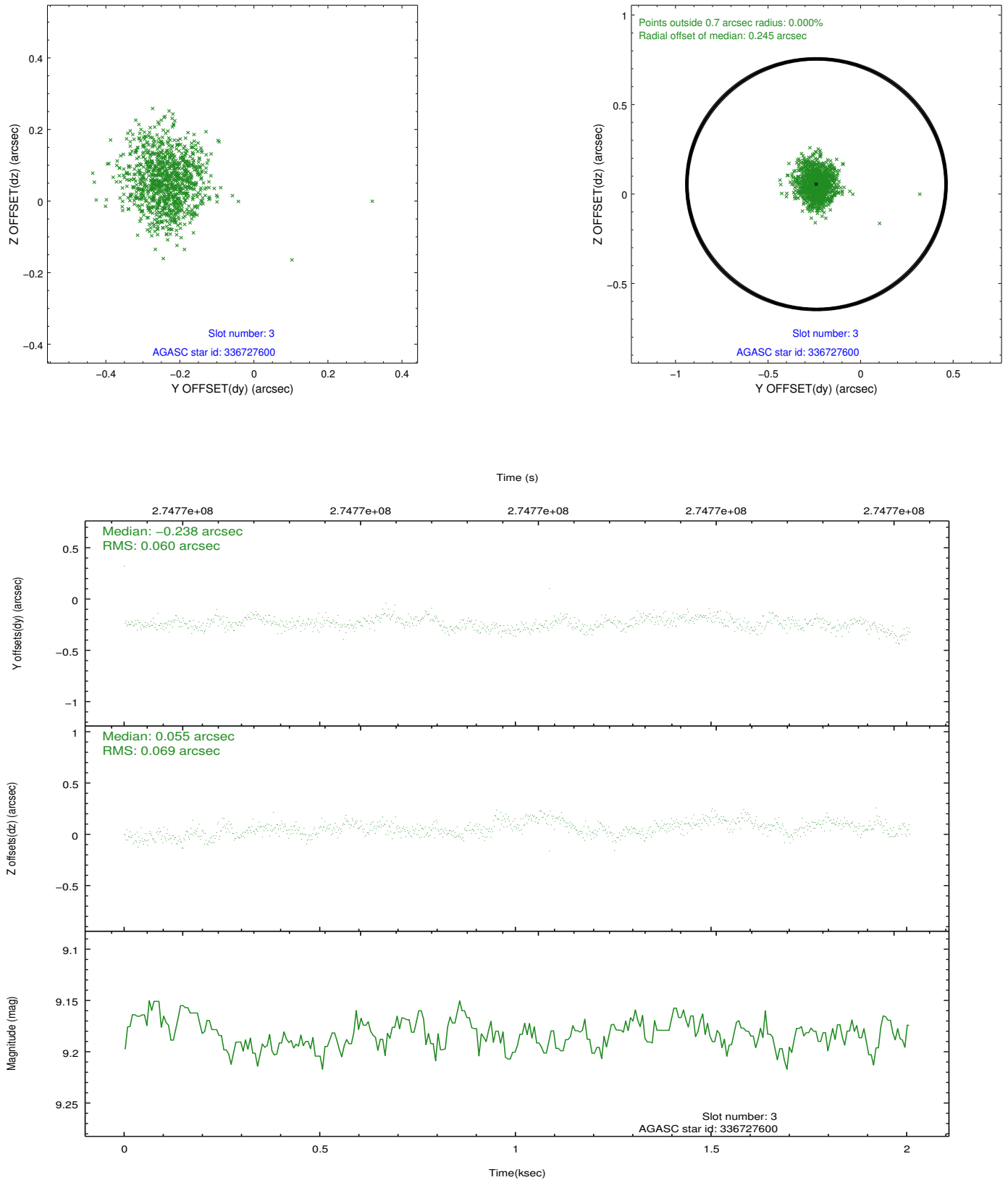


Slot Statistics

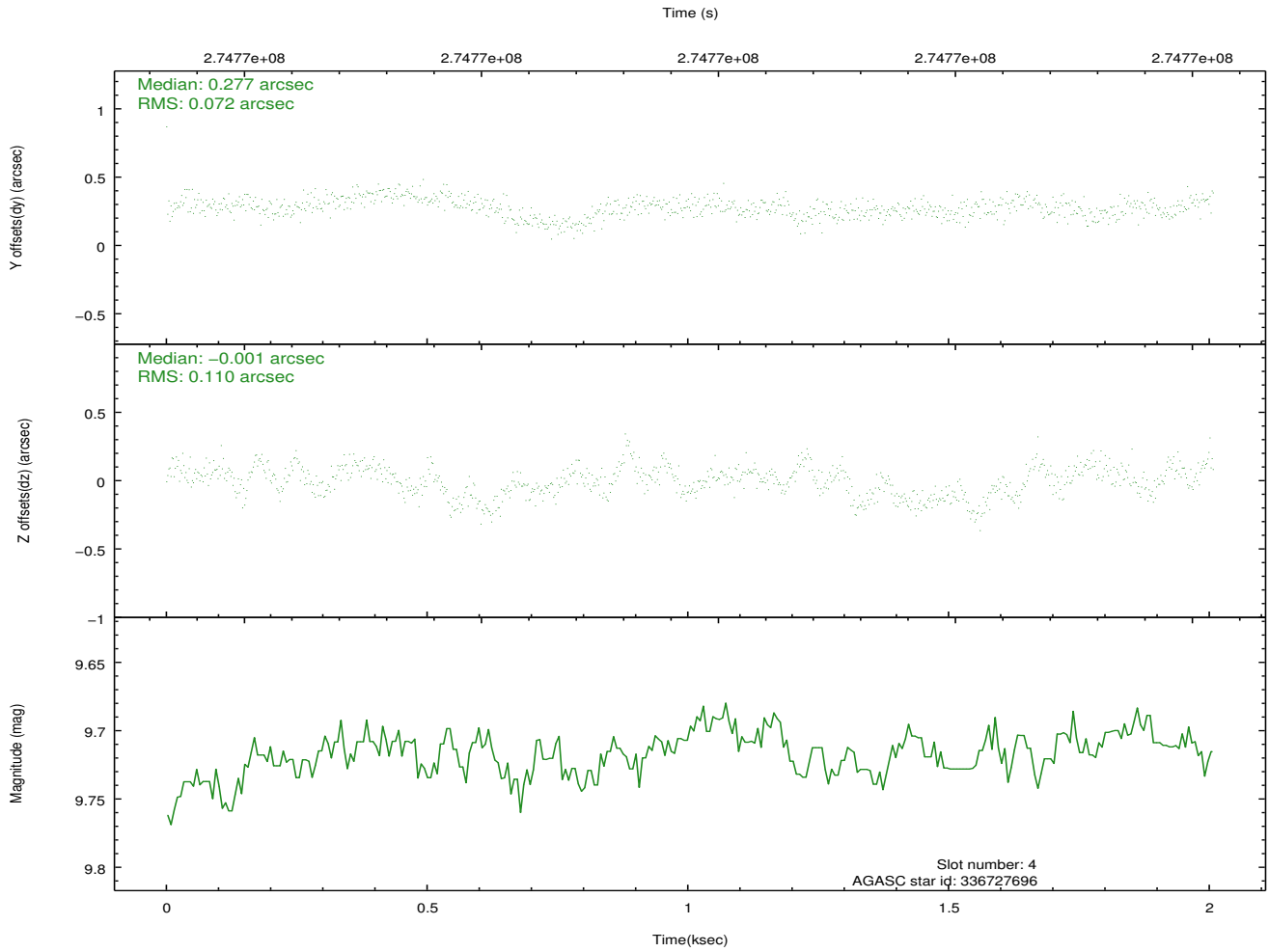
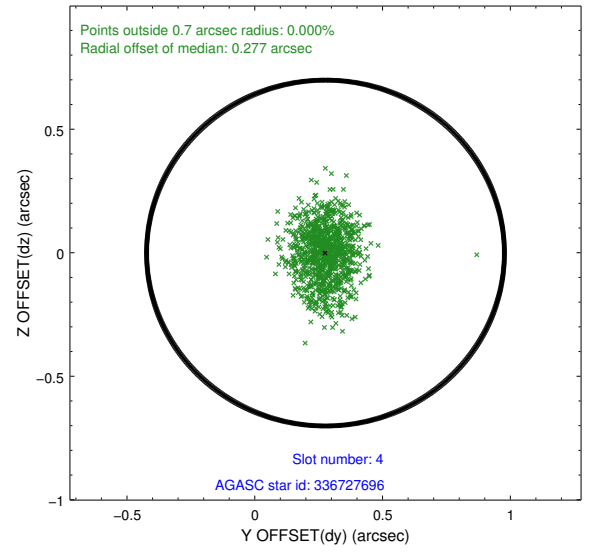
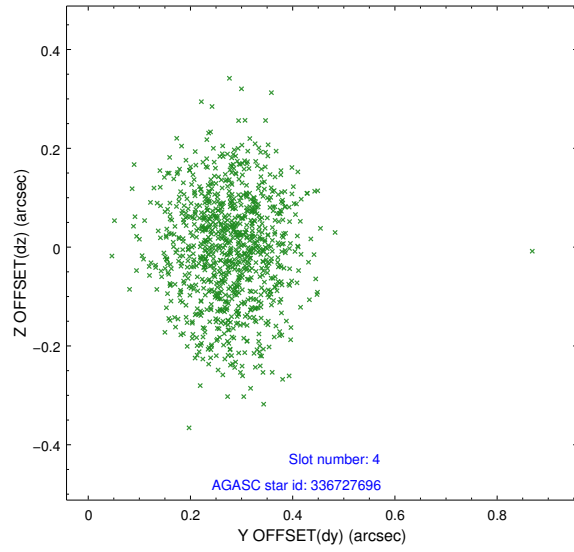
slot	status	id	mag	n_pts	med_dy	med_dz	dr1	dr2	ra	dec	mean_y	mean_z
0	FID	ACIS-S-2	7.10	490	-0.005	-0.042	0.007	0.011	0.000000	0.000000	-761.58	-1734.21
1	FID	ACIS-S-4	7.20	490	0.117	0.014	0.005	0.010	0.000000	0.000000	2150.35	170.92
2	FID	ACIS-S-5	7.24	490	-0.143	0.037	0.007	0.012	0.000000	0.000000	-1810.35	168.37
3	GUIDE	336727600	9.18	980	-0.238	0.055	0.096	0.151	228.970867	35.606684	437.10	-2418.33
4	GUIDE	336727696	9.72	979	0.277	-0.001	0.137	0.222	228.854734	35.962451	-882.32	-2309.64
5	GUIDE	336730192	10.17	976	0.010	-0.052	0.168	0.256	229.972737	36.100815	-275.05	926.38
6	GUIDE	336732528	9.88	980	0.021	0.046	0.163	0.258	230.369693	35.485120	2197.97	1307.89
7	GUIDE	336735888	8.41	979	-0.052	-0.034	0.092	0.152	229.405166	35.159591	2382.27	-1752.40

2.4 Star Slots

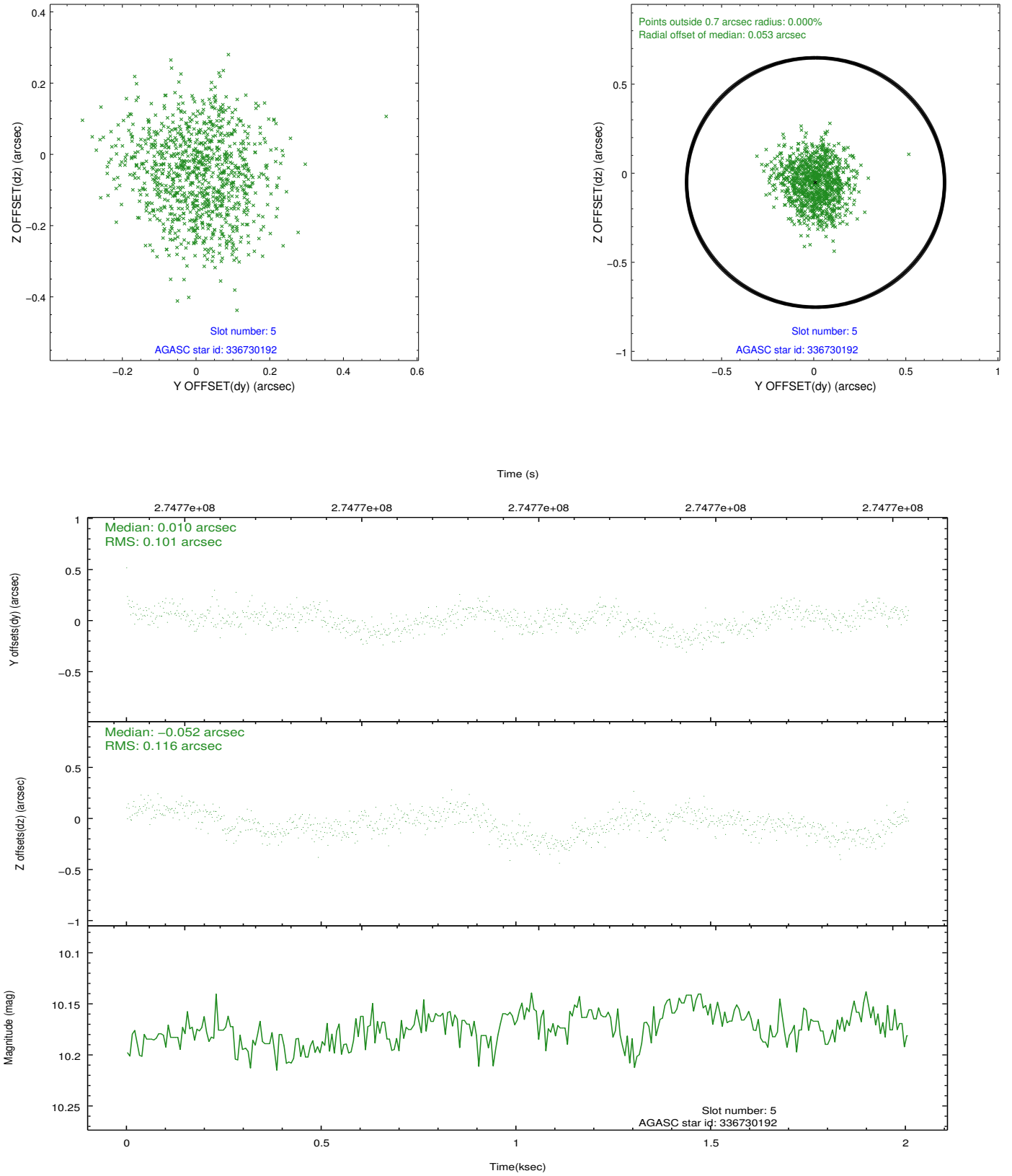
2.4.1 Slot 3



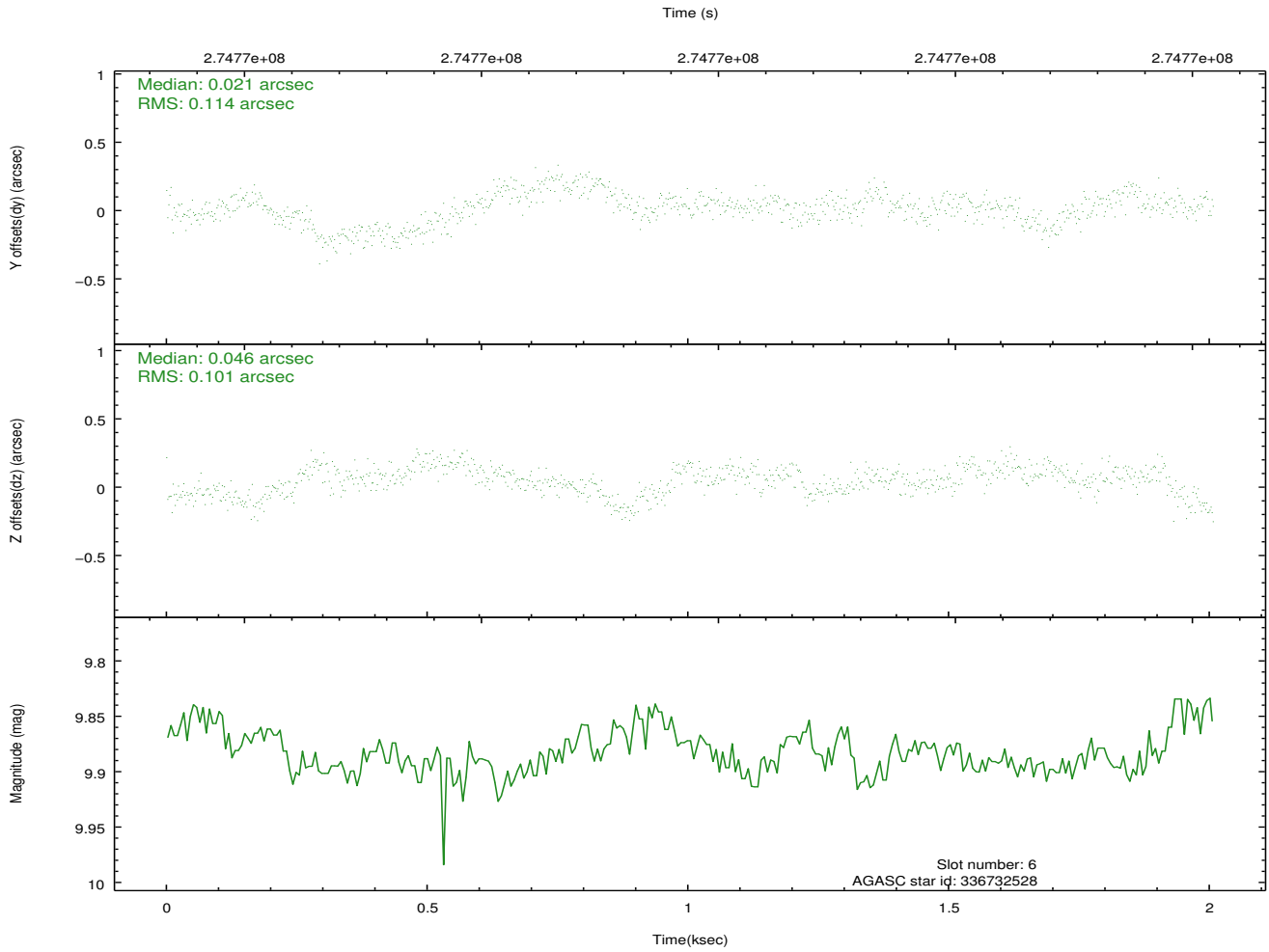
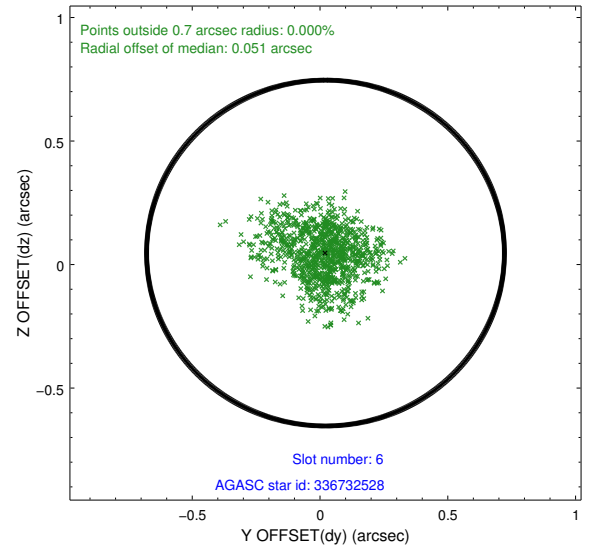
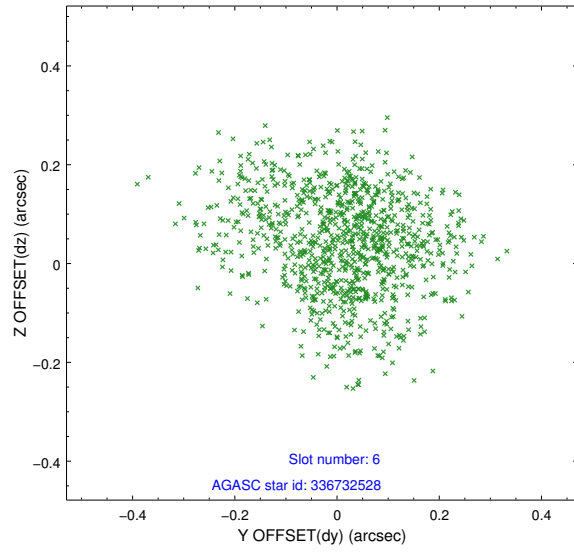
2.4.2 Slot 4



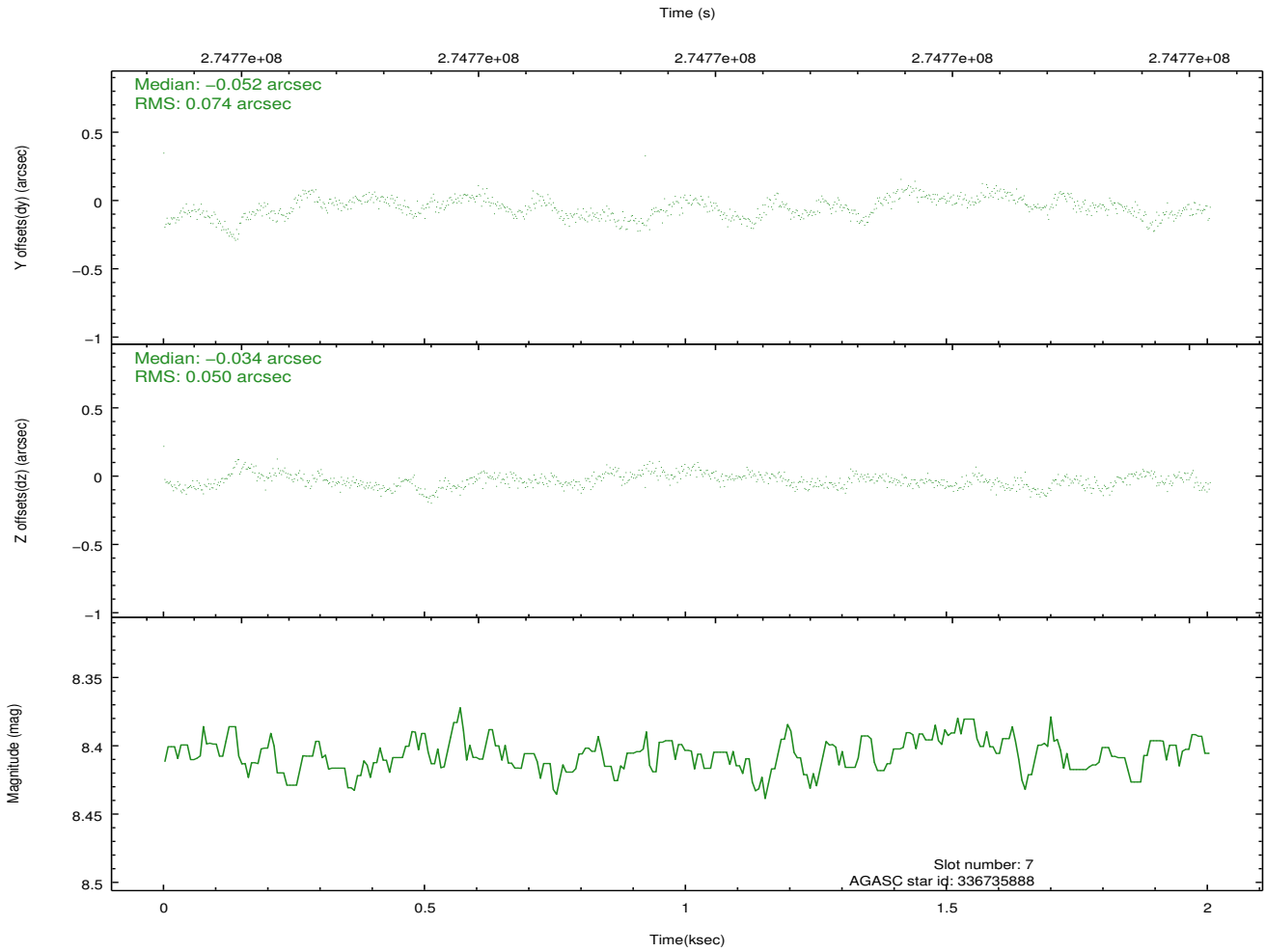
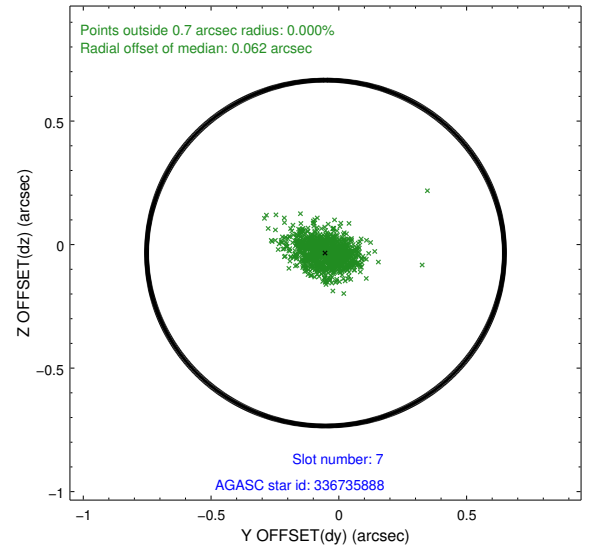
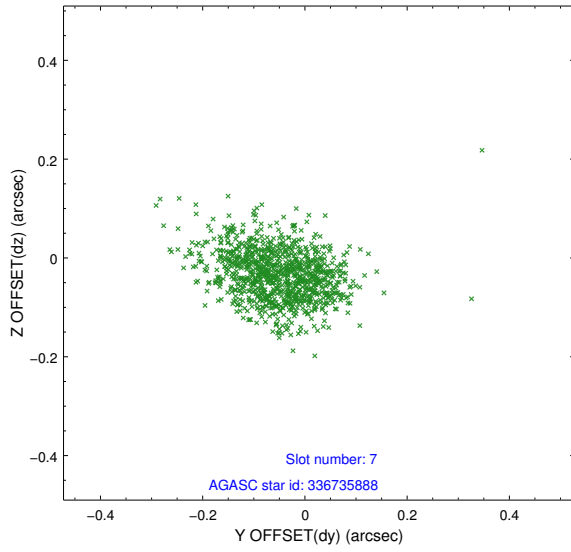
2.4.3 Slot 5



2.4.4 Slot 6

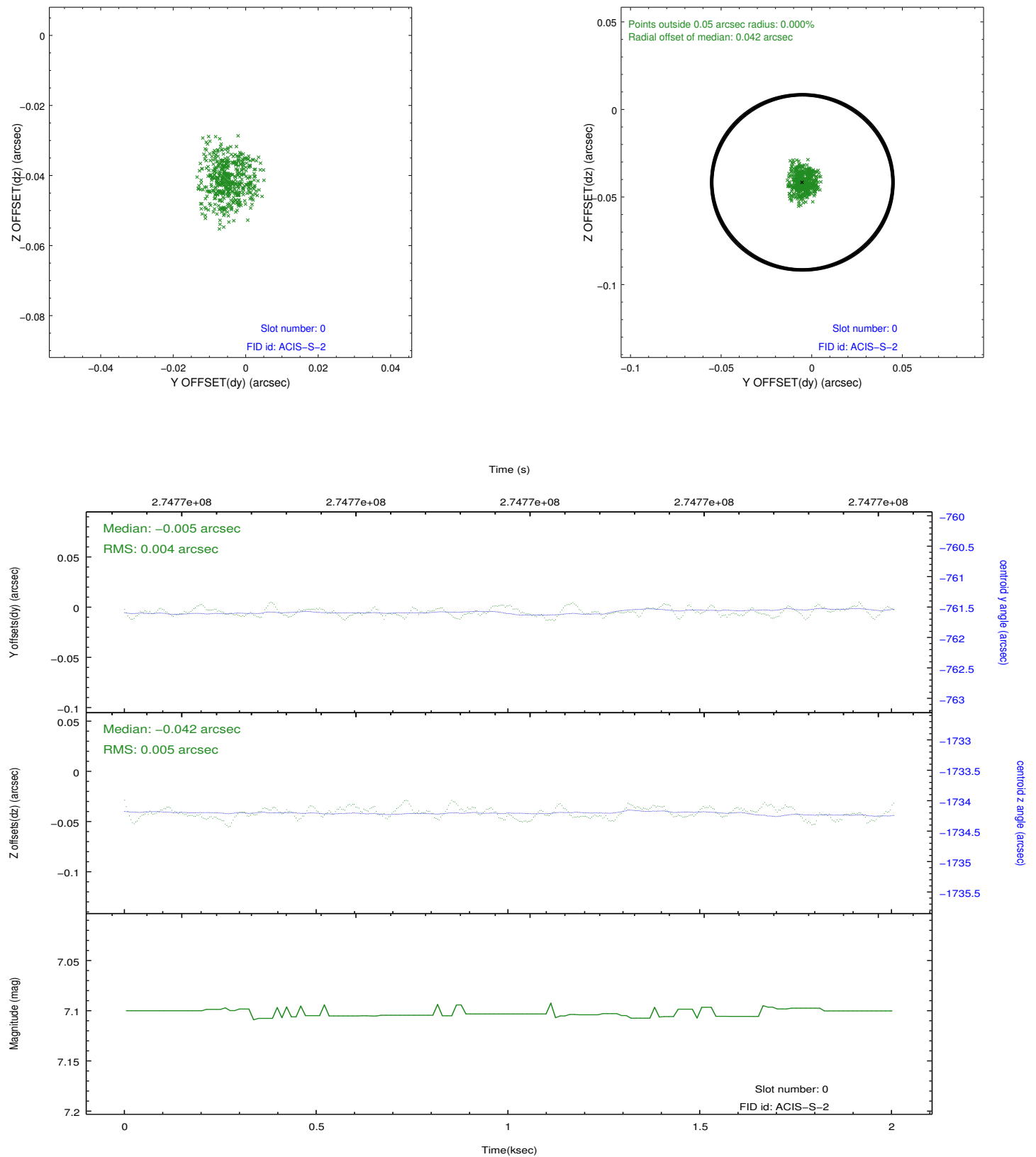


2.4.5 Slot 7

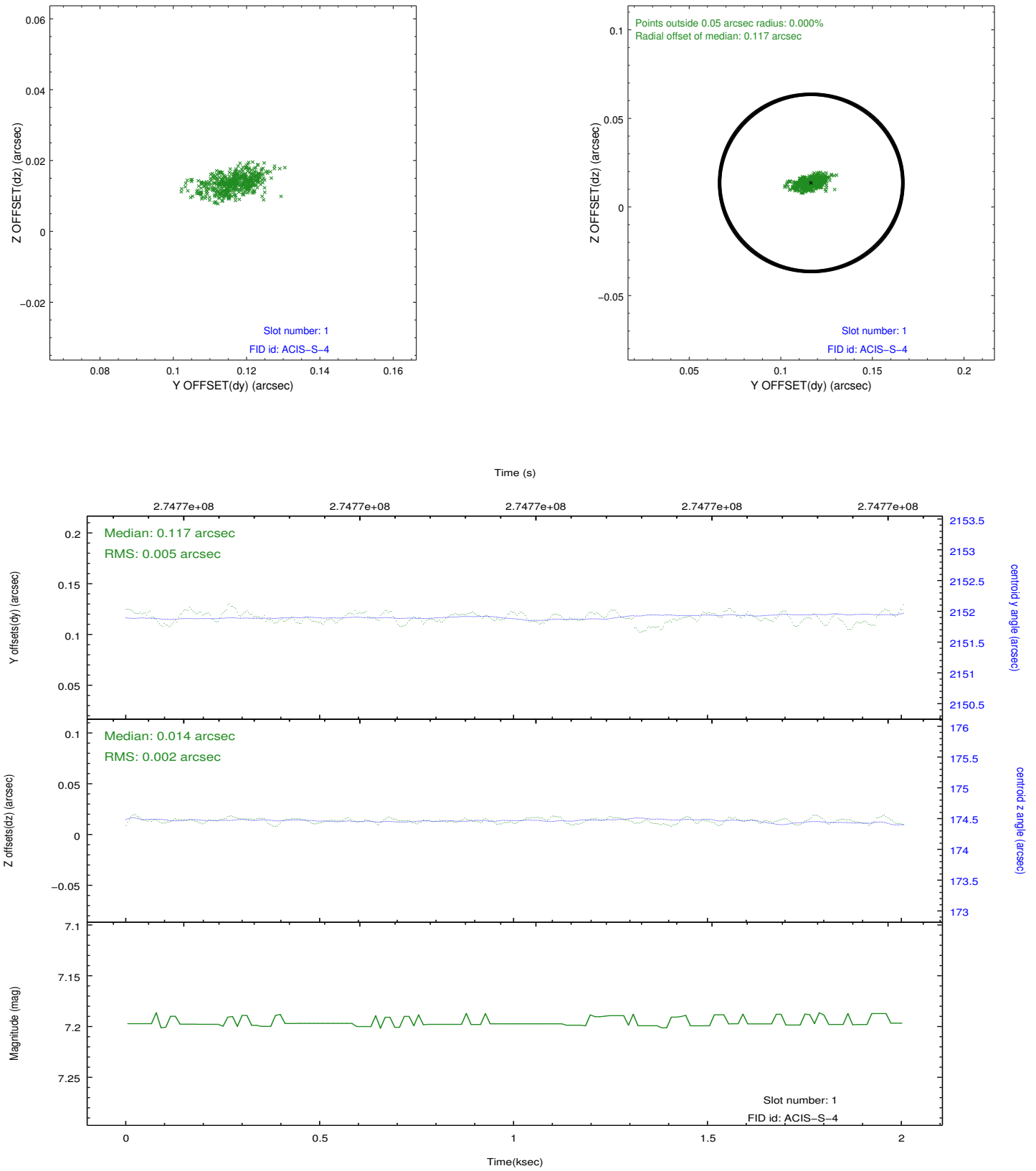


2.5 FID Slots

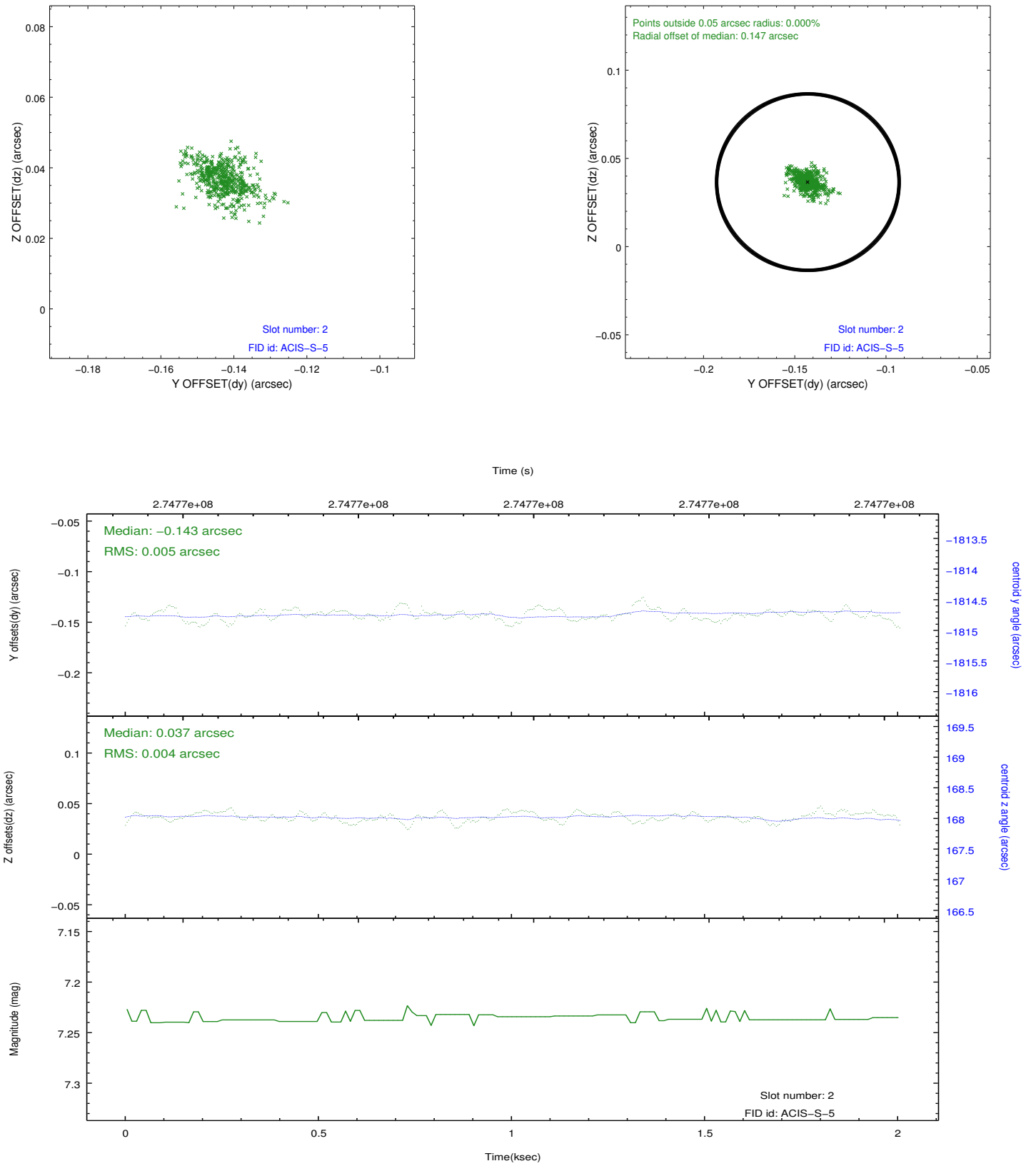
2.5.1 Slot 0



2.5.2 Slot 1



2.5.3 Slot 2



A Summary

A.1 Status

V&V Scientist	Jen Lauer
V&V Date (YYYY-MM-DD)	2012.04.09
V&V Edition	1
V&V Disposition and Status	OK
V&V Charge Time	1.04319999

A.2 Comments