

# V&V Reference Report

## L2 ASCDS Version : 8.3.2

Observation 62735 - L2 Version 4  
Chandra X-Ray Center

L2 Processing Date : Aug 15 2010

## Contents

<b>1</b>	<b>Front</b>	<b>2</b>
<b>2</b>	<b>OBI</b>	<b>3</b>
2.1	OBI . . . . .	3
2.1.1	Images . . . . .	3
2.1.2	Bias . . . . .	3
2.1.3	Parameters . . . . .	4
2.1.4	Events . . . . .	4
2.2	Compared Parameters . . . . .	5
2.3	Star Slots . . . . .	6
2.4	FID Slots . . . . .	6
<b>A</b>	<b>Summary</b>	<b>7</b>
A.1	Status . . . . .	7
A.2	Comments . . . . .	7

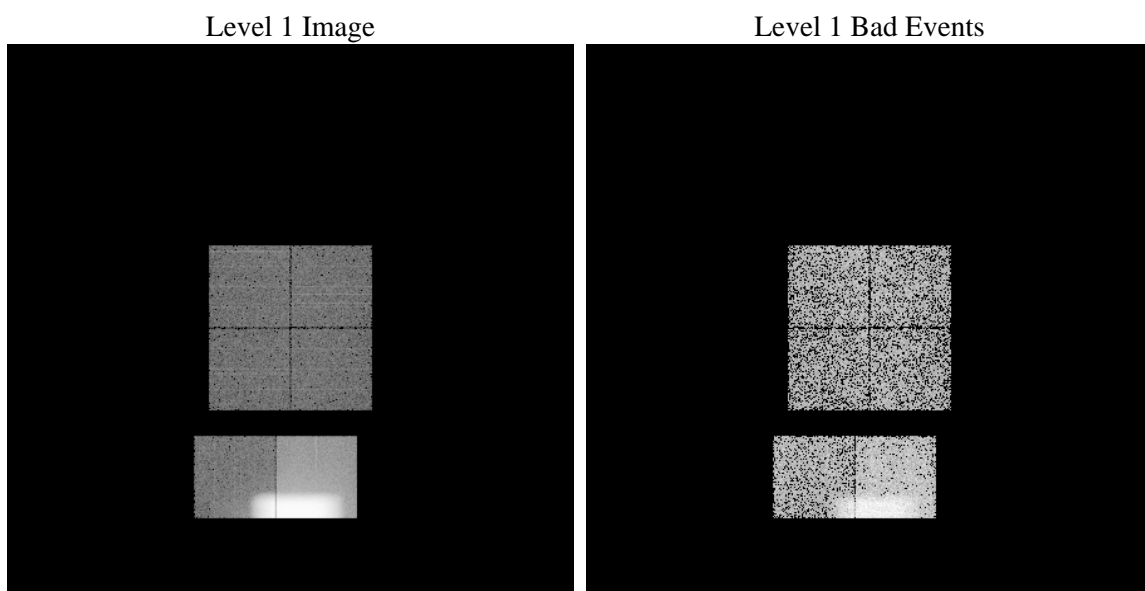
# 1 Front

seq_num	0	Sequence number
obs_id	62735	Observation id
title	ACIS internal cal	Proposal title
observer	CHANDRA orbital activation and checkout	Principal investigator
object	&#160	Source name
dtcycle	0	&#160
cycle	P	events from which exps? Prim/Second/Both
ra_targ	0.0	Observer's specified target RA
dec_targ	0.0	Observer's specified target Dec
ra_nom	218.26534659388	Nominal RA
dec_nom	-8.3360373181804	Nominal Dec
roll_nom	252.18041603561	Nominal Roll
revision	4	Processing version of data
ontime	8264.6862100437	Sum of GTIs [s]
livetime	8163.1661079018	Livetime [s]
ontime0	8294.7137919441	Sum of GTIs [s]
ontime1	8298.0137021542	Sum of GTIs [s]
ontime2	8291.2907417193	Sum of GTIs [s]
ontime3	8291.2497316673	Sum of GTIs [s]
ontime6	8291.2087116614	Sum of GTIs [s]
ontime7	8264.6862100437	Sum of GTIs [s]
l2events	672450	Number of level 2 events

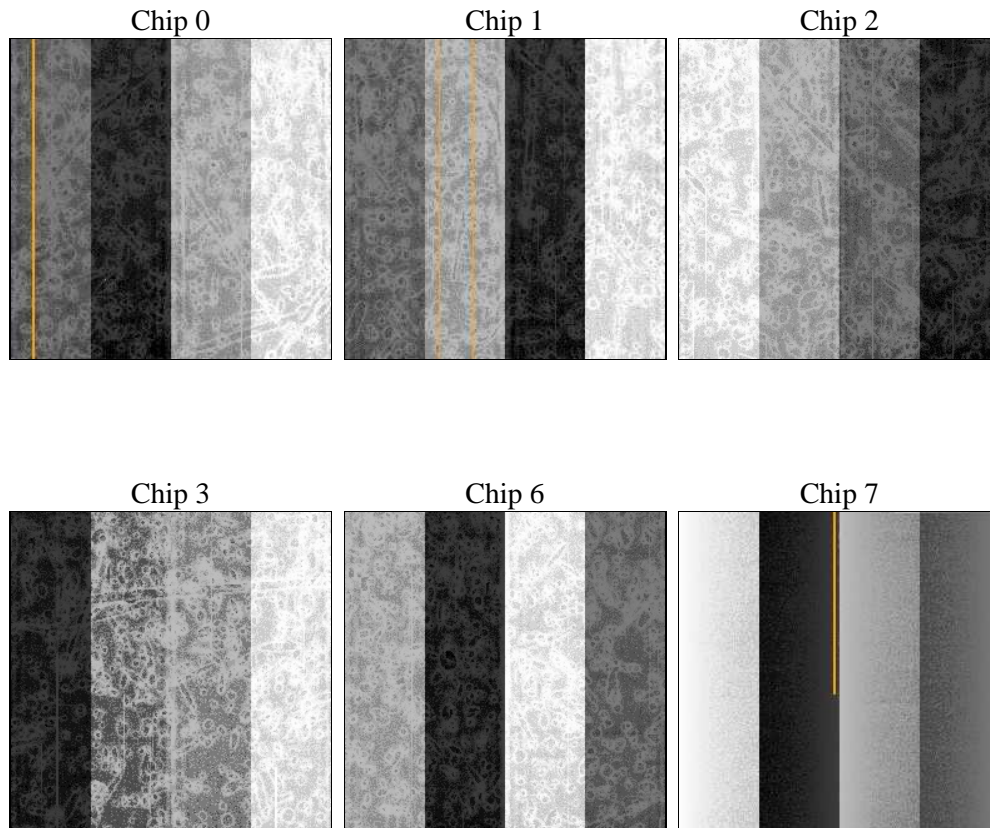
## 2 OBI

### 2.1 OBI

#### 2.1.1 Images



#### 2.1.2 Bias



### 2.1.3 Parameters

obi_num	0	Obi number		
ascdsver	8.3.2	ASCDS version number	sched_exp_time	0.0
caldsver	4.3.0	&#160		Scheduled observation exposure time
date	2010-08-15T13:18:03	Date and time of file creation	ontime	8264.6862100437
revision	4	Processing version of data	ontime0	8294.7137919441
			ontime1	8298.0137021542
			ontime2	8291.2907417193
			ontime3	8291.2497316673
			ontime6	8291.2087116614
			ontime7	8264.6862100437
			l1events	732339
				Sum of GTIs [s]
				Sum of GTIs [s]
				Sum of GTIs [s]
				Sum of GTIs [s]
				Sum of GTIs [s]
				Sum of GTIs [s]
				Sum of GTIs [s]
				Number of level 1 events

### 2.1.4 Events

	ccd 0	ccd 1	ccd 2	ccd 3	ccd 6	ccd 7
level 1 events	21647	21647	20847	20901	118701	528596
rejected events	6211	6069	5690	6047	8545	18669
rejected %	28%	28%	27%	28%	7%	3%

	ccd 0	ccd 1	ccd 2	ccd 3	ccd 6	ccd 7
grade 0 events	3811	3814	3887	3704	45196	103139
	17%	17%	18%	17%	38%	19%
grade 1 events	41	39	60	33	357	511
	0%	0%	0%	0%	0%	0%
grade 2 events	3336	3183	3256	3135	20771	118434
	15%	14%	15%	14%	17%	22%
grade 3 events	1545	1642	1403	1479	8132	40998
	7%	7%	6%	7%	6%	7%
grade 4 events	1406	1486	1347	1340	7875	40955
	6%	6%	6%	6%	6%	7%
grade 5 events	6023	5933	5543	5903	7542	14085
	27%	27%	26%	28%	6%	2%
grade 6 events	5451	5550	5351	5307	28828	210474
	25%	25%	25%	25%	24%	39%
grade 7 events	34	0	0	0	0	0
	0%	0%	0%	0%	0%	0%

## 2.2 Compared Parameters

Parameter	Planned	Actual	Parameter	Planned	Actual
Instrument	ACIS	ACIS	Obspar format version number	6	6
Detector	ACIS-012367	ACIS-012367	Obspar file type	PREDICTED	ACTUAL
Grating	NONE	NONE	Obspar update status	NONE	UPDATED
Data mode	FAINT	FAINT	On-chip summing requested	N	N
Observation mode	SECONDARY	SECONDARY	Subarray requested	NONE	NONE
Pointing RA	0	218.2653465938784	Alternating exposures requested	N	N
Pointing Dec	0	-8.33603731818042	Primary exposure time	0.000000	3.3
Pointing Roll	0.0	252.180416035613			
SIM focus pos (mm)	-0.782348	0.255451383487682			
SIM defocus (mm)	0	0.9397188447875782			
SIM translation stage pos (mm)	-233.592463	-190.1325231039672			
SIM translation stage offset (mm)	0	5.209593894051068e-07			
Observation start time	49956824.777	49956819.599641			
Observation start date	1999-08-02T04:53:45	1999-08-02T04:53:39			
Observation end time	49967000.605	49966999.899991			
Observation end date	1999-08-02T07:43:21	1999-08-02T07:43:19			
Read mode	TIMED	TIMED			

## 2.3 Star Slots

## 2.4 FID Slots

# A Summary

## A.1 Status

V&V Scientist	Beth Sundheim
V&V Date (YYYY-MM-DD)	2010.08.16
V&V Edition	1
V&V Disposition and Status	OK
V&V Charge Time	8.2646862100437

## A.2 Comments

This ACIS internal calibration observation was acquired before the ACIS door was open. A reflection of the door is visible in the image.

==

Focal plane temperature is warmer than -118.7 C degrees during this observation. The ACIS spectral response calibration for the front-illuminated chips is less accurate at these warmer temperatures than it is at -119.7 C. The back-illuminated chips are not affected at the focal plane temperatures recorded for this observation.