

V&V Reference Report

L2 ASCDS Version : 8.1.1

Observation 62305 - L2 Version 4
Chandra X-Ray Center

L2 Processing Date : Nov 24 2009

Contents

1	Front	2
2	OBI	3
2.1	OBI	3
2.1.1	Images	3
2.1.2	Bias	3
2.1.3	Parameters	4
2.1.4	Events	4
2.2	Compared Parameters	5
2.3	Star Slots	6
2.4	FID Slots	6
A	Summary	7
A.1	Status	7
A.2	Comments	7

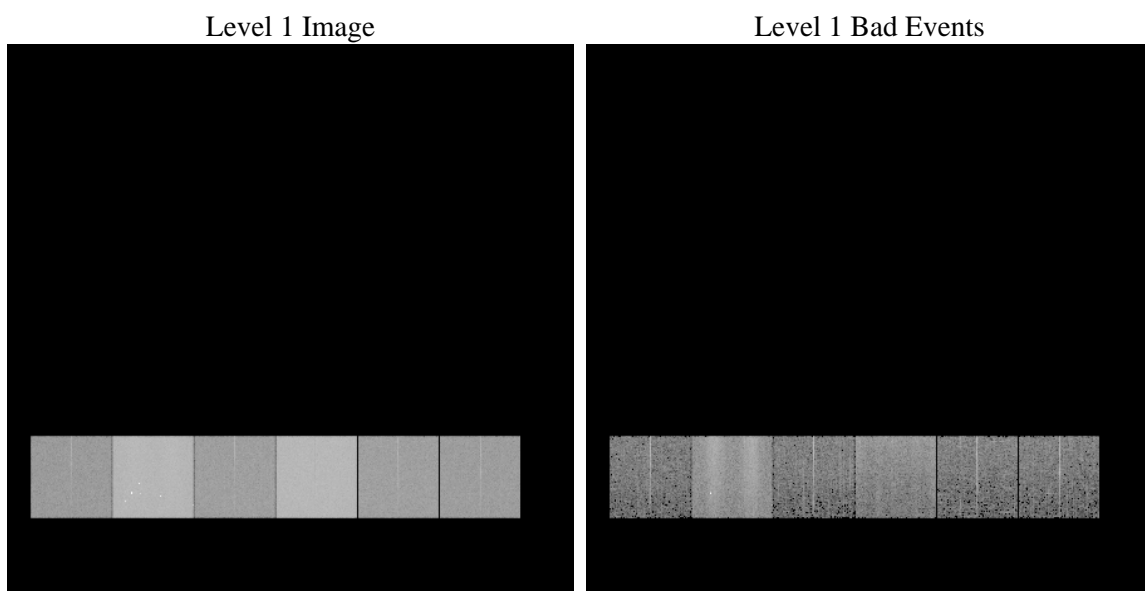
1 Front

seq_num	 	Sequence number
obs_id	62305	Observation id
title	ACIS-456789 diagnostics	Proposal title
observer	CHANDRA engineering request/realtime commanding	Principal investig
object	 	Source name
dtcycle	0	
cycle	P	events from which exps? Prim/Second/Both
ra_targ	0.0	Observer's specified target RA
dec_targ	0.0	Observer's specified target Dec
ra_nom	327.97655246006	Nominal RA
dec_nom	-30.487000419514	Nominal Dec
roll_nom	288.85624105651	Nominal Roll
revision	4	Processing version of data
ontime	4001.9697868079	Sum of GTIs [s]
livetime	3951.2944356704	Livetime [s]
ontime4	1536.9822832122	Sum of GTIs [s]
ontime5	4272.4082779288	Sum of GTIs [s]
ontime6	1684.7166116983	Sum of GTIs [s]
ontime7	4001.9697868079	Sum of GTIs [s]
ontime8	1704.2448419407	Sum of GTIs [s]
ontime9	1632.7368515953	Sum of GTIs [s]
l2events	1292432	Number of level 2 events

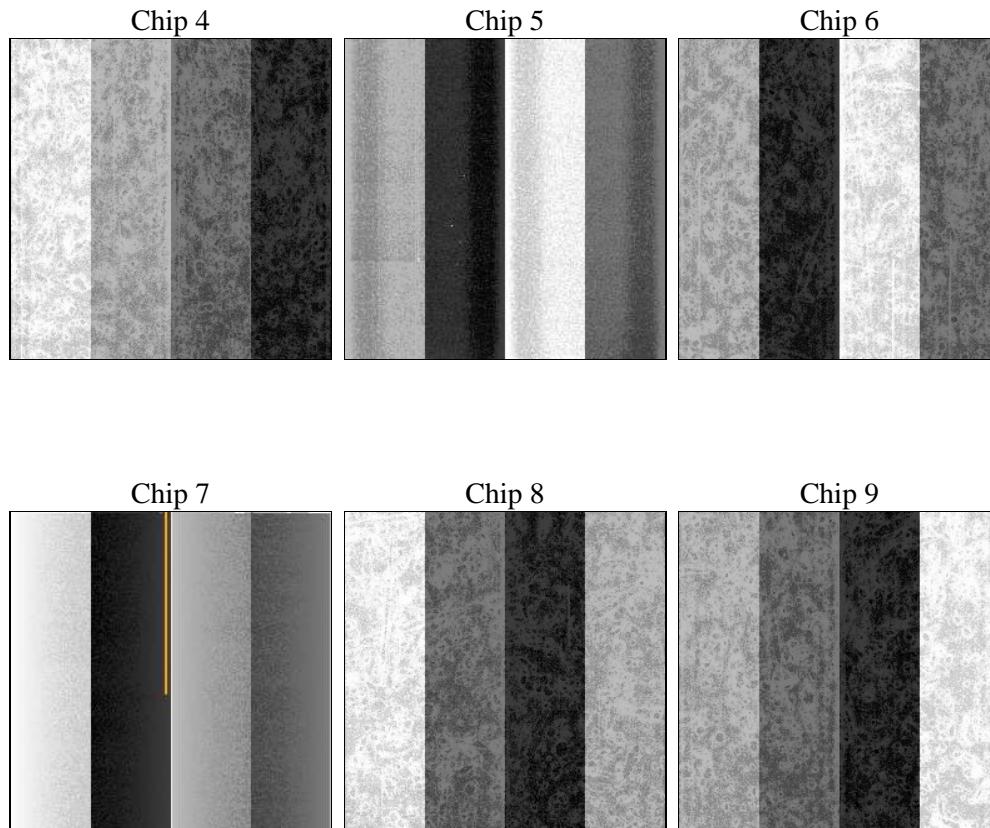
2 OBI

2.1 OBI

2.1.1 Images



2.1.2 Bias



2.1.3 Parameters

obi_num	0	Obi number		
ascdsver	8.1.1	ASCDS version number	sched_exp_time	0.0
caldsver	4.1.4	 		
date	2009-11-24T11:16:49	Date and time of file creation	ontime	4001.9697868079
revision	3	Processing version of data	ontime4	1536.9822832122
			ontime5	4272.4082779288
			ontime6	1684.7166116983
			ontime7	4001.9697868079
			ontime8	1704.2448419407
			ontime9	1632.7368515953
			l1events	1519779

2.1.4 Events

	ccd 4	ccd 5	ccd 6	ccd 7	ccd 8	ccd 9		ccd 4	ccd 5	ccd 6	ccd 7	ccd 8	ccd 9
level 1 events	153507	413565	179292	420826	184389	168200	grade 0 events	30230	37699	41952	68559	55492	44643
rejected events	24539	68067	26180	40821	25716	24236		19%	9%	23%	16%	30%	26%
rejected %	15%	16%	14%	9%	13%	14%	grade 1 events	121	214	179	171	260	193
								0%	0%	0%	0%	0%	0%
							grade 2 events	69171	133575	72525	106714	63055	63236
								45%	32%	40%	25%	34%	37%
							grade 3 events	3092	17935	4355	32932	5935	4628
								2%	4%	2%	7%	3%	2%
							grade 4 events	2966	15256	4368	29347	5955	4592
								1%	3%	2%	6%	3%	2%
							grade 5 events	1301	7071	1489	5858	1683	1449
								0%	1%	0%	1%	0%	0%
							grade 6 events	23750	141307	29912	142453	28236	26865
								15%	34%	16%	33%	15%	15%
							grade 7 events	22876	60508	24512	34792	23773	22594
								14%	14%	13%	8%	12%	13%

2.2 Compared Parameters

Parameter	Planned	Actual	Parameter	Planned	Actual
Instrument	ACIS	ACIS	Obspar format version number	6	6
Detector	ACIS-456789	ACIS-456789	Obspar file type	PREDICTED	ACTUAL
Grating	NONE	NONE	Obspar update status	NONE	UPDATED
Data mode	FAINT	FAINT	On-chip summing requested	N	N
Observation mode	SECONDARY	SECONDARY	Subarray requested	NONE	NONE
Pointing RA	0	327.9765524600633	Alternating exposures requested	N	N
Pointing Dec	0	-30.48700041951392	Primary exposure time	3.2	3.2
Pointing Roll	0.0	288.8562410565128			
SIM focus pos (mm)	-0.684267	-0.6828225247311905			
SIM defocus (mm)	0	0.8505141146731063			
SIM translation stage pos (mm)	-190.132523	250.466033080201			
SIM translation stage offset (mm)	0	-0.01005468664627074			
Observation start time	59432590.497111	59432589.728678			
Observation start date	1999-11-19T21:03:10	1999-11-19T21:03:09			
Observation end time	59442389.497466	59442388.729032			
Observation end date	1999-11-19T23:46:29	1999-11-19T23:46:28			
Read mode	TIMED	TIMED			

2.3 Star Slots

2.4 FID Slots

A Summary

A.1 Status

V&V Scientist	Beth Sundheim
V&V Date (YYYY-MM-DD)	2010.08.12
V&V Edition	1
V&V Disposition and Status	OK
V&V Charge Time	4.0019697868079

A.2 Comments

This observation was acquired with the focal plane temperature raised from -120C to -110C, for attempted recalibration of ACIS for the 1999-09-16 through 2000-01-28 period. This reprocessing of the data applies no CTI correction because none is available for that temperature.