

# V&V Reference Report

## L2 ASCDS Version : 8.4.5

Observation 62185 - L2 Version 4  
Chandra X-Ray Center

L2 Processing Date : Aug 22 2012

## Contents

<b>1</b>	<b>Front</b>	<b>2</b>
<b>2</b>	<b>OBI</b>	<b>3</b>
2.1	OBI . . . . .	3
2.1.1	Images . . . . .	3
2.1.2	Bias . . . . .	3
2.1.3	Parameters . . . . .	4
2.1.4	Events . . . . .	4
2.2	Compared Parameters . . . . .	5
2.3	Star Slots . . . . .	6
2.4	FID Slots . . . . .	6
<b>A</b>	<b>Summary</b>	<b>7</b>
A.1	Status . . . . .	7
A.2	Comments . . . . .	7

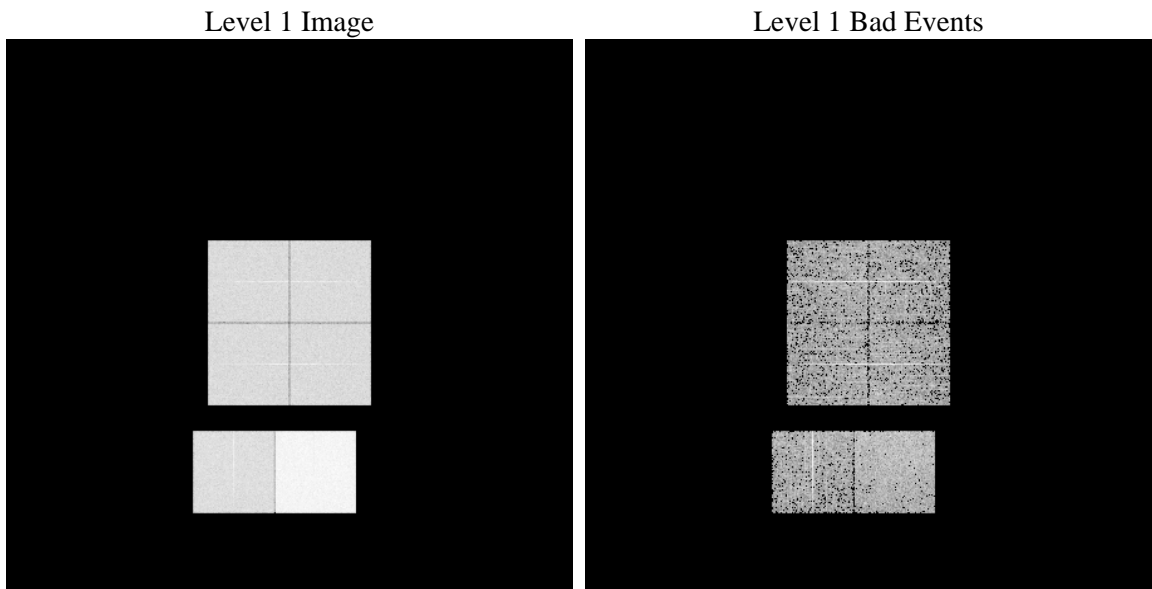
# 1 Front

seq_num	&#160	Sequence number
obs_id	62185	Observation id
title	ACIS-012367 diagnostics	Proposal title
observer	CHANDRA engineering request/realtime commanding	Principal investig
object	&#160	Source name
dtcycle	0	&#160
cycle	P	events from which exps? Prim/Second/Both
ra_targ	0.0	Observer's specified target RA [deg]
dec_targ	0.0	Observer's specified target Dec [deg]
ra_nom	184.95535808863	Nominal RA [deg]
dec_nom	55.013349645017	Nominal Dec [deg]
roll_nom	120.28510144107	Nominal Roll [deg]
revision	4	Processing version of data
ontime	3497.0611727759	Sum of GTIs [s]
livetime	3452.7792785288	Livetime [s]
ontime0	1413.0920165479	Sum of GTIs [s]
ontime1	1416.3330565542	Sum of GTIs [s]
ontime2	1377.4406263381	Sum of GTIs [s]
ontime3	1367.2165789455	Sum of GTIs [s]
ontime6	1512.8581991643	Sum of GTIs [s]
ontime7	3497.0611727759	Sum of GTIs [s]
l2events	922375	Number of level 2 events

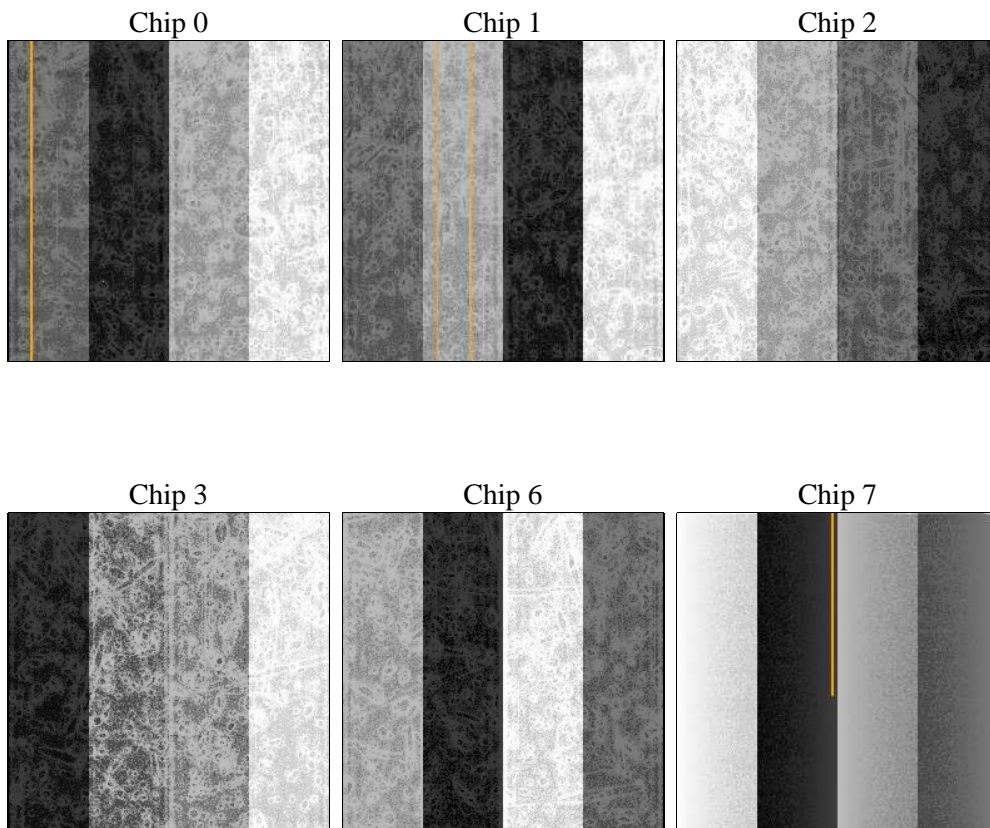
## 2 OBI

### 2.1 OBI

#### 2.1.1 Images



#### 2.1.2 Bias



### 2.1.3 Parameters

obi_num	0	Obi number	sched_exp_time	0.0	[s] Scheduled observation exposure time
ascdsver	8.4.5	Processing system revision	ontime	3497.0611727759	Sum of GTIs [s]
caldsver	4.5.1.1	&#160	ontime0	1413.0920165479	Sum of GTIs [s]
date	2012-08-22T03:03:38	Date and time of file creation	ontime1	1416.3330565542	Sum of GTIs [s]
revision	4	Processing version of data	ontime2	1377.4406263381	Sum of GTIs [s]
			ontime3	1367.2165789455	Sum of GTIs [s]
			ontime6	1512.8581991643	Sum of GTIs [s]
			ontime7	3497.0611727759	Sum of GTIs [s]
			l1events	1055581	Number of level 1 events

### 2.1.4 Events

	ccd 0	ccd 1	ccd 2	ccd 3	ccd 6	ccd 7		ccd 0	ccd 1	ccd 2	ccd 3	ccd 6	ccd 7
level 1 events	139265	138989	138377	136864	156592	345494	grade 0 events	68600	68701	68943	68105	76836	83361
rejected events	14704	14324	14439	15163	15985	20777		49%	49%	49%	49%	49%	24%
rejected %	10%	10%	10%	11%	10%	6%	grade 1 events	452	411	445	475	463	249
								0%	0%	0%	0%	0%	0%
							grade 2 events	21864	21825	21486	21259	24370	72586
								15%	15%	15%	15%	15%	21%
							grade 3 events	7925	7946	7997	7710	8696	33459
								5%	5%	5%	5%	5%	9%
							grade 4 events	7869	7920	7889	7685	8666	33010
								5%	5%	5%	5%	5%	9%
							grade 5 events	1038	1080	967	1058	1189	4702
								0%	0%	0%	0%	0%	1%
							grade 6 events	18303	18273	17623	16942	22039	102301
								13%	13%	12%	12%	14%	29%
							grade 7 events	13214	12833	13027	13630	14333	15826
								9%	9%	9%	9%	9%	4%

## 2.2 Compared Parameters

Parameter	Planned	Actual	Parameter	Planned	Actual
Instrument	ACIS	ACIS	Obspar format version number	7	7
Detector	ACIS-012367	ACIS-012367	Obspar file type	PREDICTED	ACTUAL
Grating	NONE	NONE	Obspar update status	NONE	UPDATED
Data mode	FAINT	FAINT	On-chip summing requested	N	N
Observation mode	SECONDARY	SECONDARY	Subarray requested	NONE	NONE
[deg] Pointing RA	0	184.9553580886265	Alternating exposures requested	N	N
[deg] Pointing Dec	0	55.01334964501712	[s] Primary exposure time	0.000000	3.2
[deg] Pointing Roll	0.0	120.2851014410728			
[mm] SIM focus pos	-0.782348	-0.6828225247311905			
[mm] SIM defocus	0	0.8505141146731063			
[mm] SIM translation stage pos	-233.592463	250.466033080201			
[mm] SIM translation stage offset	0	-0.01005468664627074			
[s] Observation start time (MET)	66237508.344	66237507.575413			
Observation start date	2000-02-06T15:18:28	2000-02-06T15:18:27			
[s] Observation end time (MET)	66245782.144	66245781.375715			
Observation end date	2000-02-06T17:36:22	2000-02-06T17:36:21			
Read mode	TIMED	TIMED			

## 2.3 Star Slots

## 2.4 FID Slots

## A Summary

### A.1 Status

V&V Scientist	Jen Lauer
V&V Date (YYYY-MM-DD)	2012.08.23
V&V Edition	1
V&V Disposition and Status	OK
V&V Charge Time	3.4970611727759

### A.2 Comments