

# V&V Reference Report

## L2 ASCDS Version : 8.4.5

Observation 62165 - L2 Version 4  
Chandra X-Ray Center

L2 Processing Date : Aug 22 2012

## Contents

<b>1</b>	<b>Front</b>	<b>2</b>
<b>2</b>	<b>OBI</b>	<b>3</b>
2.1	OBI . . . . .	3
2.1.1	Images . . . . .	3
2.1.2	Bias . . . . .	3
2.1.3	Parameters . . . . .	4
2.1.4	Events . . . . .	4
2.2	Compared Parameters . . . . .	5
2.3	Star Slots . . . . .	6
2.4	FID Slots . . . . .	6
<b>A</b>	<b>Summary</b>	<b>7</b>
A.1	Status . . . . .	7
A.2	Comments . . . . .	7

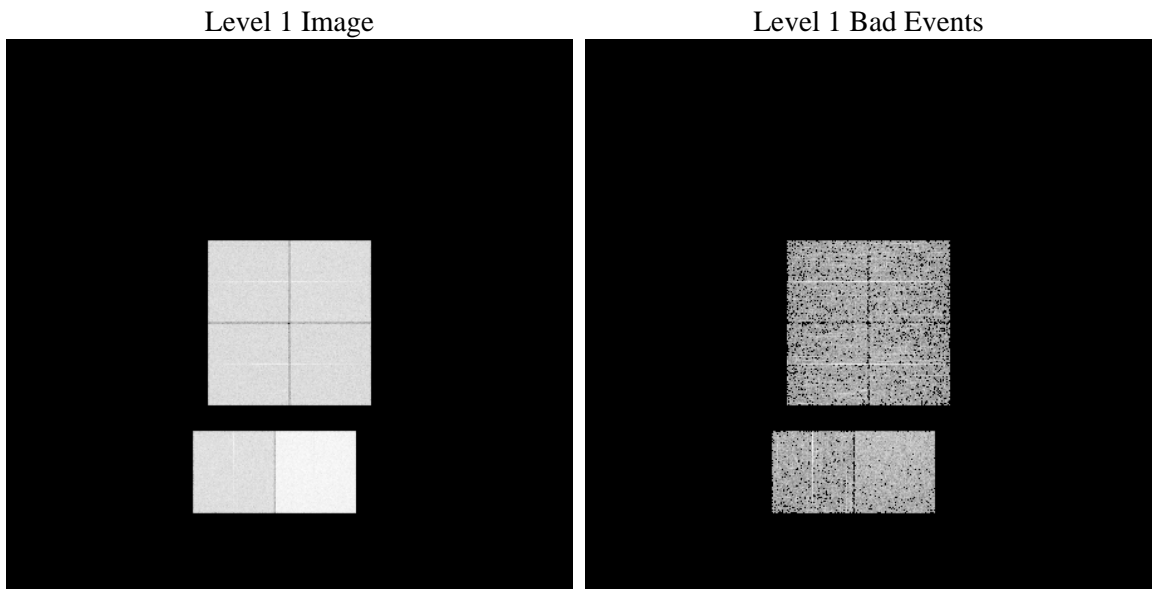
# 1 Front

seq_num	&#160	Sequence number
obs_id	62165	Observation id
title	ACIS-012367 diagnostics	Proposal title
observer	CHANDRA engineering request/realtime commanding	Principal investig
object	&#160	Source name
dtcycle	0	&#160
cycle	P	events from which exps? Prim/Second/Both
ra_targ	0.0	Observer's specified target RA [deg]
dec_targ	0.0	Observer's specified target Dec [deg]
ra_nom	108.0315341103	Nominal RA [deg]
dec_nom	-25.007591898547	Nominal Dec [deg]
roll_nom	310.31096774382	Nominal Roll [deg]
revision	4	Processing version of data
ontime	3397.5818615109	Sum of GTIs [s]
livetime	3354.5596342022	Livetime [s]
ontime0	1416.1663819626	Sum of GTIs [s]
ontime1	1481.0282021537	Sum of GTIs [s]
ontime2	1383.8380419612	Sum of GTIs [s]
ontime3	1386.9149219692	Sum of GTIs [s]
ontime6	1524.2779220119	Sum of GTIs [s]
ontime7	3397.5818615109	Sum of GTIs [s]
l2events	921827	Number of level 2 events

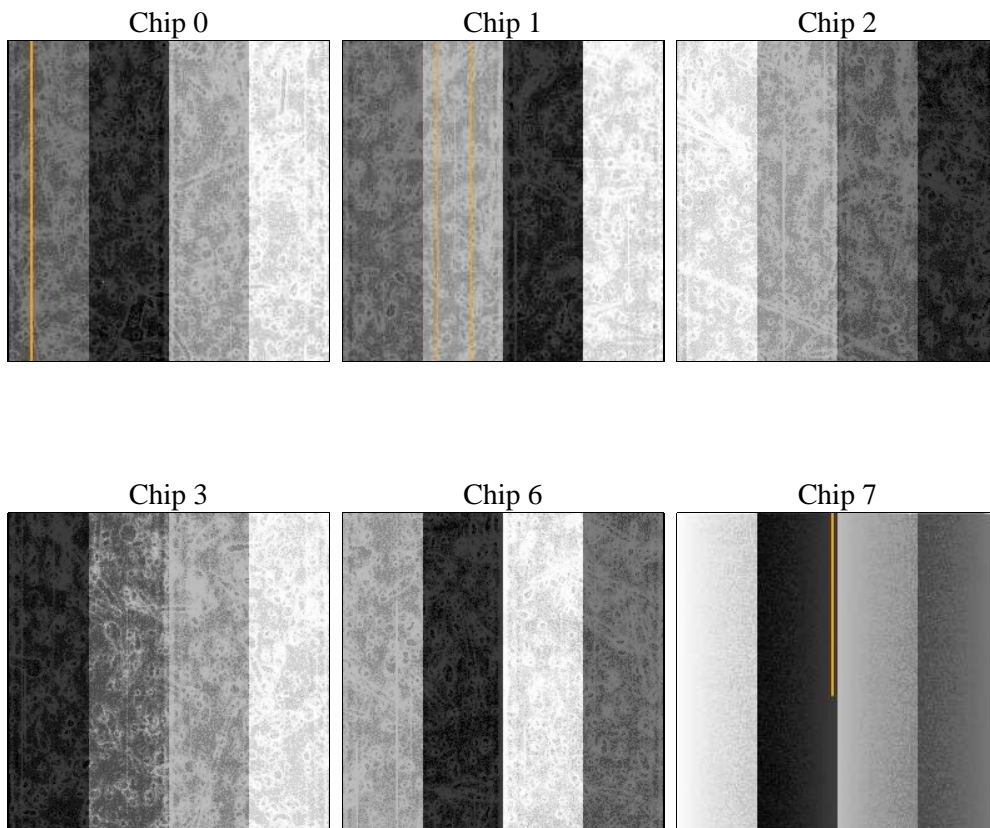
## 2 OBI

### 2.1 OBI

#### 2.1.1 Images



#### 2.1.2 Bias



### 2.1.3 Parameters

obi_num	0	Obi number	sched_exp_time	0.0	[s] Scheduled observation exposure time
ascdsver	8.4.5	Processing system revision	ontime	3397.5818615109	Sum of GTIs [s]
caldsver	4.5.1.1	&#160	ontime0	1416.1663819626	Sum of GTIs [s]
date	2012-08-22T19:26:14	Date and time of file creation	ontime1	1481.0282021537	Sum of GTIs [s]
revision	4	Processing version of data	ontime2	1383.8380419612	Sum of GTIs [s]
			ontime3	1386.9149219692	Sum of GTIs [s]
			ontime6	1524.2779220119	Sum of GTIs [s]
			ontime7	3397.5818615109	Sum of GTIs [s]
			l1events	1050626	Number of level 1 events

### 2.1.4 Events

	ccd 0	ccd 1	ccd 2	ccd 3	ccd 6	ccd 7		ccd 0	ccd 1	ccd 2	ccd 3	ccd 6	ccd 7
level 1 events	138213	145500	138034	137499	157428	333952	grade 0 events	68404	72485	68800	69272	77968	81610
rejected events	13712	13812	14374	13814	15319	19477		49%	49%	49%	50%	49%	24%
rejected %	9%	9%	10%	10%	9%	5%	grade 1 events	430	413	392	452	451	223
								0%	0%	0%	0%	0%	0%
							grade 2 events	22054	23064	21774	21663	24706	70077
								15%	15%	15%	15%	15%	20%
							grade 3 events	7964	8485	7744	7929	8761	32150
								5%	5%	5%	5%	5%	9%
							grade 4 events	7957	8421	7894	7805	8661	32142
								5%	5%	5%	5%	5%	9%
							grade 5 events	1028	1037	1030	1008	1192	4483
								0%	0%	0%	0%	0%	1%
							grade 6 events	18122	19233	17448	17016	22300	98810
								13%	13%	12%	12%	14%	29%
							grade 7 events	12254	12362	12952	12354	13389	14457
								8%	8%	9%	8%	8%	4%

## 2.2 Compared Parameters

Parameter	Planned	Actual	Parameter	Planned	Actual
Instrument	ACIS	ACIS	Obspar format version number	7	7
Detector	ACIS-012367	ACIS-012367	Obspar file type	PREDICTED	ACTUAL
Grating	NONE	NONE	Obspar update status	NONE	UPDATED
Data mode	FAINT	FAINT	On-chip summing requested	N	N
Observation mode	SECONDARY	SECONDARY	Subarray requested	NONE	NONE
[deg] Pointing RA	0	108.0315341102964	Alternating exposures requested	N	N
[deg] Pointing Dec	0	-25.00759189854711	[s] Primary exposure time	0.000000	3.2
[deg] Pointing Roll	0.0	310.3109677438202			
[mm] SIM focus pos	-0.782348	-1.428180813131781			
[mm] SIM defocus	0	0.1051558262725154			
[mm] SIM translation stage pos	-233.592463	250.466033080201			
[mm] SIM translation stage offset	0	-0.01005468664627074			
[s] Observation start time (MET)	66980838.371	66980837.602504			
Observation start date	2000-02-15T05:47:18	2000-02-15T05:47:17			
[s] Observation end time (MET)	66988138.421	66988137.65277			
Observation end date	2000-02-15T07:48:58	2000-02-15T07:48:57			
Read mode	TIMED	TIMED			

## **2.3 Star Slots**

## **2.4 FID Slots**

## A Summary

### A.1 Status

V&V Scientist	Jen Lauer
V&V Date (YYYY-MM-DD)	2012.08.23
V&V Edition	1
V&V Disposition and Status	OK
V&V Charge Time	3.3975818615109

### A.2 Comments