

V&V Reference Report

L2 ASCDS Version : 8.4.5

Observation 62135 - L2 Version 4
Chandra X-Ray Center

L2 Processing Date : Aug 24 2012

Contents

1	Front	2
2	OBI	3
2.1	OBI	3
2.1.1	Images	3
2.1.2	Bias	3
2.1.3	Parameters	4
2.1.4	Events	4
2.2	Compared Parameters	5
2.3	Star Slots	6
2.4	FID Slots	6
A	Summary	7
A.1	Status	7
A.2	Comments	7

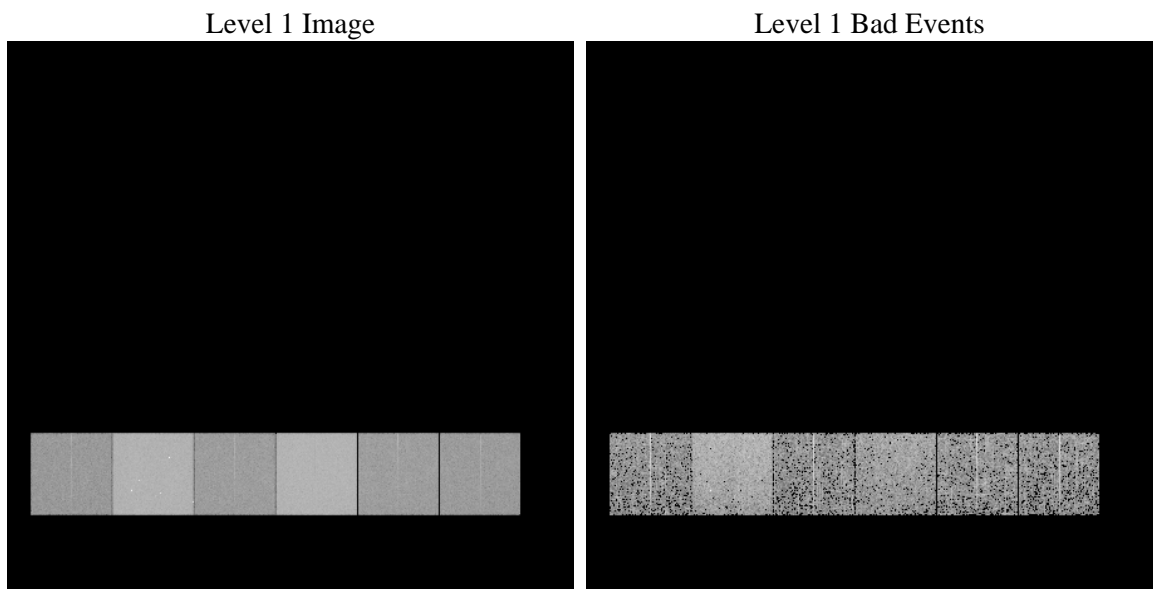
1 Front

seq_num	 	Sequence number
obs_id	62135	Observation id
title	ACIS-456789 diagnostics	Proposal title
observer	CHANDRA engineering request/realtime commanding	Principal investig
object	 	Source name
dtcycle	0	
cycle	P	events from which exps? Prim/Second/Both
ra_targ	0.0	Observer's specified target RA [deg]
dec_targ	0.0	Observer's specified target Dec [deg]
ra_nom	281.50018798694	Nominal RA [deg]
dec_nom	76.98235613422	Nominal Dec [deg]
roll_nom	65.552596924398	Nominal Roll [deg]
revision	4	Processing version of data
ontime	2984.4062472731	Sum of GTIs [s]
livetime	2946.6158983764	Livetime [s]
ontime4	1192.915143609	Sum of GTIs [s]
ontime5	3175.6651176661	Sum of GTIs [s]
ontime6	1286.9053632021	Sum of GTIs [s]
ontime7	2984.4062472731	Sum of GTIs [s]
ontime8	1321.9256164432	Sum of GTIs [s]
ontime9	1250.4175366312	Sum of GTIs [s]
l2events	926756	Number of level 2 events

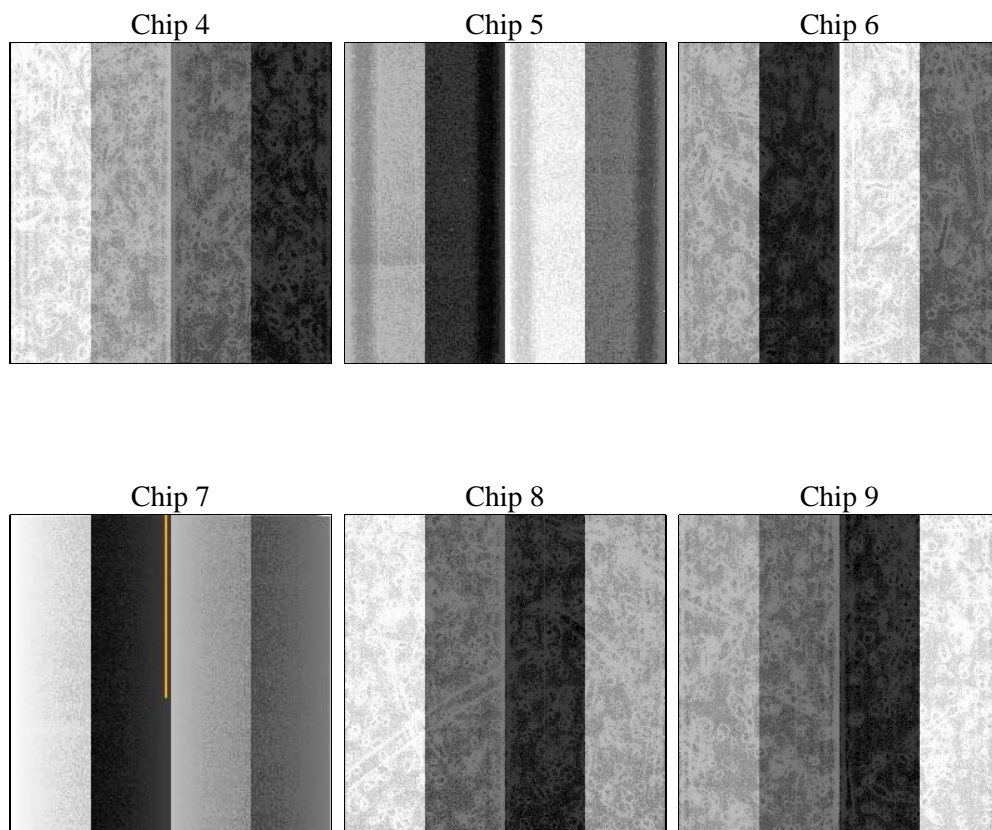
2 OBI

2.1 OBI

2.1.1 Images



2.1.2 Bias



2.1.3 Parameters

obi_num	0	Obi number	sched_exp_time	0.0	[s] Scheduled observation exposure time
ascdsver	8.4.5	Processing system revision	ontime	2984.4062472731	Sum of GTIs [s]
caldsver	4.5.1.1	 	ontime4	1192.915143609	Sum of GTIs [s]
date	2012-08-24T05:22:01	Date and time of file creation	ontime5	3175.6651176661	Sum of GTIs [s]
revision	4	Processing version of data	ontime6	1286.9053632021	Sum of GTIs [s]
			ontime7	2984.4062472731	Sum of GTIs [s]
			ontime8	1321.9256164432	Sum of GTIs [s]
			ontime9	1250.4175366312	Sum of GTIs [s]
			l1events	1064654	Number of level 1 events

2.1.4 Events

	ccd 4	ccd 5	ccd 6	ccd 7	ccd 8	ccd 9		ccd 4	ccd 5	ccd 6	ccd 7	ccd 8	ccd 9
level 1 events	113672	277257	130963	286220	134477	122065	grade 0 events	57147	64445	64615	69594	66274	60106
rejected events	13195	26432	13278	16772	14527	12983		50%	23%	49%	24%	49%	49%
rejected %	11%	9%	10%	5%	10%	10%	grade 1 events	349	334	386	219	357	376
								0%	0%	0%	0%	0%	0%
							grade 2 events	17765	88032	20348	59818	21148	19094
								15%	31%	15%	20%	15%	15%
							grade 3 events	6119	16495	7267	27827	7511	6676
								5%	5%	5%	9%	5%	5%
							grade 4 events	6133	16280	7369	27564	7492	6776
								5%	5%	5%	9%	5%	5%
							grade 5 events	889	5529	1013	3903	1037	950
								0%	1%	0%	1%	0%	0%
							grade 6 events	13591	65573	18411	84645	17525	16430
								11%	23%	14%	29%	13%	13%
							grade 7 events	11679	20569	11554	12650	13133	11657
								10%	7%	8%	4%	9%	9%

2.2 Compared Parameters

Parameter	Planned	Actual	Parameter	Planned	Actual
Instrument	ACIS	ACIS	Obspar format version number	7	7
Detector	ACIS-456789	ACIS-456789	Obspar file type	PREDICTED	ACTUAL
Grating	NONE	NONE	Obspar update status	NONE	UPDATED
Data mode	FAINT	FAINT	On-chip summing requested	N	N
Observation mode	SECONDARY	SECONDARY	Subarray requested	NONE	NONE
[deg] Pointing RA	0	281.5001879869449	Alternating exposures requested	N	N
[deg] Pointing Dec	0	76.98235613422025	[s] Primary exposure time	3.2	3.2
[deg] Pointing Roll	0.0	65.55259692439846			
[mm] SIM focus pos	-0.684267	-0.6828225247311905			
[mm] SIM defocus	0	0.8505141146731063			
[mm] SIM translation stage pos	-190.132523	250.466033080201			
[mm] SIM translation stage offset	0	-0.01005468664627074			
[s] Observation start time (MET)	68757198.339689	68757197.57122			
Observation start date	2000-03-06T19:13:18	2000-03-06T19:13:17			
[s] Observation end time (MET)	68798378.741193	68798377.97272401			
Observation end date	2000-03-07T06:39:39	2000-03-07T06:39:37			
Read mode	TIMED	TIMED			

2.3 Star Slots

2.4 FID Slots

A Summary

A.1 Status

V&V Scientist	Jen Lauer
V&V Date (YYYY-MM-DD)	2012.08.24
V&V Edition	1
V&V Disposition and Status	OK
V&V Charge Time	2.9844062472731

A.2 Comments