

V&V Reference Report

L2 ASCDS Version : 8.4.5

Observation 62125 - L2 Version 4
Chandra X-Ray Center

L2 Processing Date : Aug 24 2012

Contents

1	Front	2
2	OBI	3
2.1	OBI	3
2.1.1	Images	3
2.1.2	Bias	3
2.1.3	Parameters	4
2.1.4	Events	4
2.2	Compared Parameters	5
2.3	Star Slots	6
2.4	FID Slots	6
A	Summary	7
A.1	Status	7
A.2	Comments	7

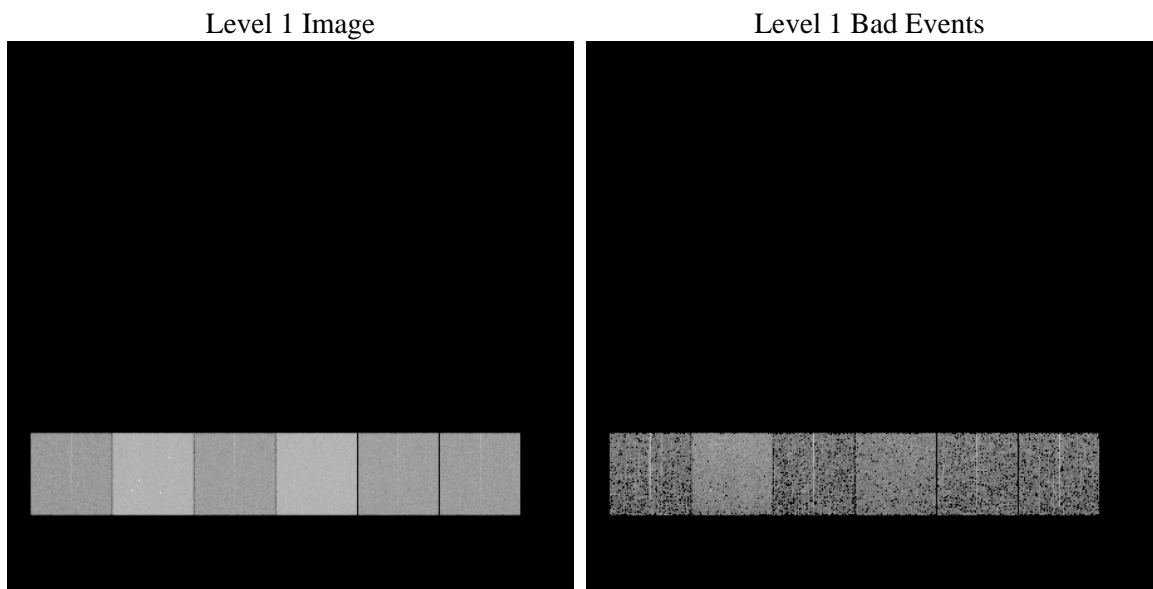
1 Front

seq_num	 	Sequence number
obs_id	62125	Observation id
title	ACIS-456789 diagnostics	Proposal title
observer	CHANDRA engineering request/realtime commanding	Principal investig
object	 	Source name
dtcycle	0	
cycle	P	events from which exps? Prim/Second/Both
ra_targ	0.0	Observer's specified target RA [deg]
dec_targ	0.0	Observer's specified target Dec [deg]
ra_nom	82.37580221766	Nominal RA [deg]
dec_nom	0.99833657717602	Nominal Dec [deg]
roll_nom	273.57802459253	Nominal Roll [deg]
revision	4	Processing version of data
ontime	2985.1617135257	Sum of GTIs [s]
livetime	2947.3617984604	Livetime [s]
ontime4	1192.8752828985	Sum of GTIs [s]
ontime5	3194.2196979076	Sum of GTIs [s]
ontime6	1295.0240367204	Sum of GTIs [s]
ontime7	2985.1617135257	Sum of GTIs [s]
ontime8	1321.0344865173	Sum of GTIs [s]
ontime9	1281.9368963689	Sum of GTIs [s]
l2events	928286	Number of level 2 events

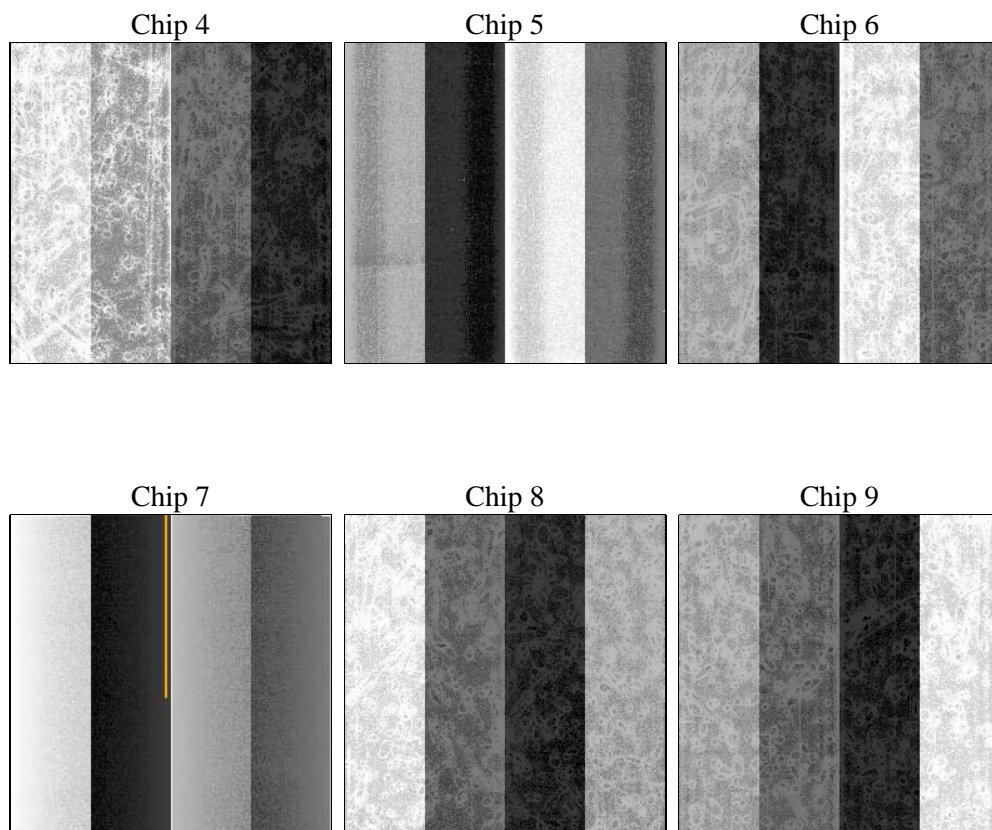
2 OBI

2.1 OBI

2.1.1 Images



2.1.2 Bias



2.1.3 Parameters

obi_num	0	Obi number	sched_exp_time	0.0	[s] Scheduled observation exposure time
ascdsver	8.4.5	Processing system revision	ontime	2985.1617135257	Sum of GTIs [s]
caldsver	4.5.1.1	 	ontime4	1192.8752828985	Sum of GTIs [s]
date	2012-08-24T09:41:21	Date and time of file creation	ontime5	3194.2196979076	Sum of GTIs [s]
revision	4	Processing version of data	ontime6	1295.0240367204	Sum of GTIs [s]
			ontime7	2985.1617135257	Sum of GTIs [s]
			ontime8	1321.0344865173	Sum of GTIs [s]
			ontime9	1281.9368963689	Sum of GTIs [s]
			l1events	1063606	Number of level 1 events

2.1.4 Events

	ccd 4	ccd 5	ccd 6	ccd 7	ccd 8	ccd 9		ccd 4	ccd 5	ccd 6	ccd 7	ccd 8	ccd 9
level 1 events	112990	276589	130521	285611	133651	124244	grade 0 events	56481	64132	64275	69055	66557	61193
rejected events	13458	26206	12765	16528	13528	12879		49%	23%	49%	24%	49%	49%
rejected %	11%	9%	9%	5%	10%	10%	grade 1 events	394	204	373	209	389	374
								0%	0%	0%	0%	0%	0%
							grade 2 events	17562	87445	20402	59503	20852	19699
								15%	31%	15%	20%	15%	15%
							grade 3 events	6208	16704	7230	27654	7464	6820
								5%	6%	5%	9%	5%	5%
							grade 4 events	6069	16644	7302	27720	7659	6825
								5%	6%	5%	9%	5%	5%
							grade 5 events	834	5646	1033	3863	1046	961
								0%	2%	0%	1%	0%	0%
							grade 6 events	13483	65458	18547	85151	17591	16828
								11%	23%	14%	29%	13%	13%
							grade 7 events	11959	20356	11359	12456	12093	11544
								10%	7%	8%	4%	9%	9%

2.2 Compared Parameters

Parameter	Planned	Actual	Parameter	Planned	Actual
Instrument	ACIS	ACIS	Obspar format version number	7	7
Detector	ACIS-456789	ACIS-456789	Obspar file type	PREDICTED	ACTUAL
Grating	NONE	NONE	Obspar update status	NONE	UPDATED
Data mode	FAINT	FAINT	On-chip summing requested	N	N
Observation mode	SECONDARY	SECONDARY	Subarray requested	NONE	NONE
[deg] Pointing RA	0	82.37580221765953	Alternating exposures requested	N	N
[deg] Pointing Dec	0	0.9983365771760172	[s] Primary exposure time	3.2	3.2
[deg] Pointing Roll	0.0	273.5780245925322			
[mm] SIM focus pos	-0.684267	-0.7809083437167272			
[mm] SIM defocus	0	0.7524282956875696			
[mm] SIM translation stage pos	-190.132523	250.4635187648994			
[mm] SIM translation stage offset	0	-0.007540371344731511			
[s] Observation start time (MET)	69257486.50795101	69257485.73949701			
Observation start date	2000-03-12T14:11:27	2000-03-12T14:11:25			
[s] Observation end time (MET)	69264786.558218	69264785.789764			
Observation end date	2000-03-12T16:13:07	2000-03-12T16:13:05			
Read mode	TIMED	TIMED			

2.3 Star Slots

2.4 FID Slots

A Summary

A.1 Status

V&V Scientist	Jen Lauer
V&V Date (YYYY-MM-DD)	2012.08.27
V&V Edition	1
V&V Disposition and Status	OK
V&V Charge Time	2.9851617135257

A.2 Comments