

V&V Reference Report

L2 ASCDS Version : 8.4.5

Observation 62085 - L2 Version 5
Chandra X-Ray Center

L2 Processing Date : Aug 25 2012

Contents

1	Front	2
2	OBI	3
2.1	OBI	3
2.1.1	Images	3
2.1.2	Bias	3
2.1.3	Parameters	4
2.1.4	Events	4
2.2	Compared Parameters	5
2.3	Star Slots	6
2.4	FID Slots	6
A	Summary	7
A.1	Status	7
A.2	Comments	7

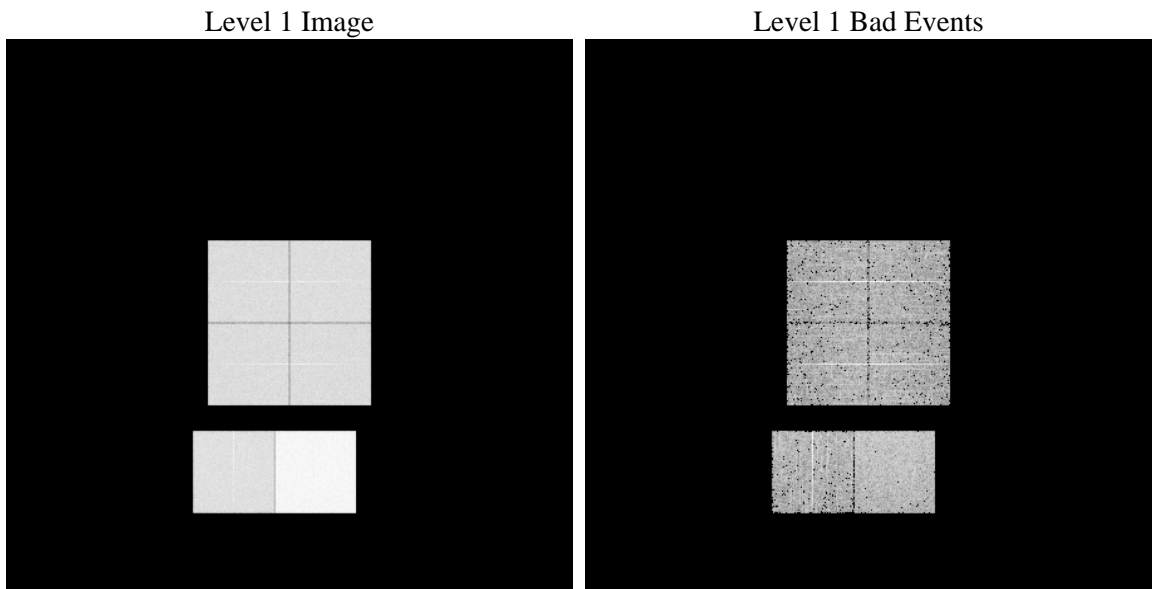
1 Front

seq_num	 	Sequence number
obs_id	62085	Observation id
title	ACIS-012367 diagnostics	Proposal title
observer	CHANDRA engineering request/realtime commanding	Principal investig
object	 	Source name
dtcycle	0	
cycle	P	events from which exps? Prim/Second/Both
ra_targ	0.0	Observer's specified target RA [deg]
dec_targ	0.0	Observer's specified target Dec [deg]
ra_nom	145.02775645099	Nominal RA [deg]
dec_nom	-40.019501572777	Nominal Dec [deg]
roll_nom	285.24793918841	Nominal Roll [deg]
revision	5	Processing version of data
ontime	5498.68729873	Sum of GTIs [s]
livetime	5429.0596092415	Livetime [s]
ontime0	2245.803006649	Sum of GTIs [s]
ontime1	2294.4596266001	Sum of GTIs [s]
ontime2	2168.1000470966	Sum of GTIs [s]
ontime3	2148.4898665249	Sum of GTIs [s]
ontime6	2401.4958069623	Sum of GTIs [s]
ontime7	5498.68729873	Sum of GTIs [s]
l2events	1392578	Number of level 2 events

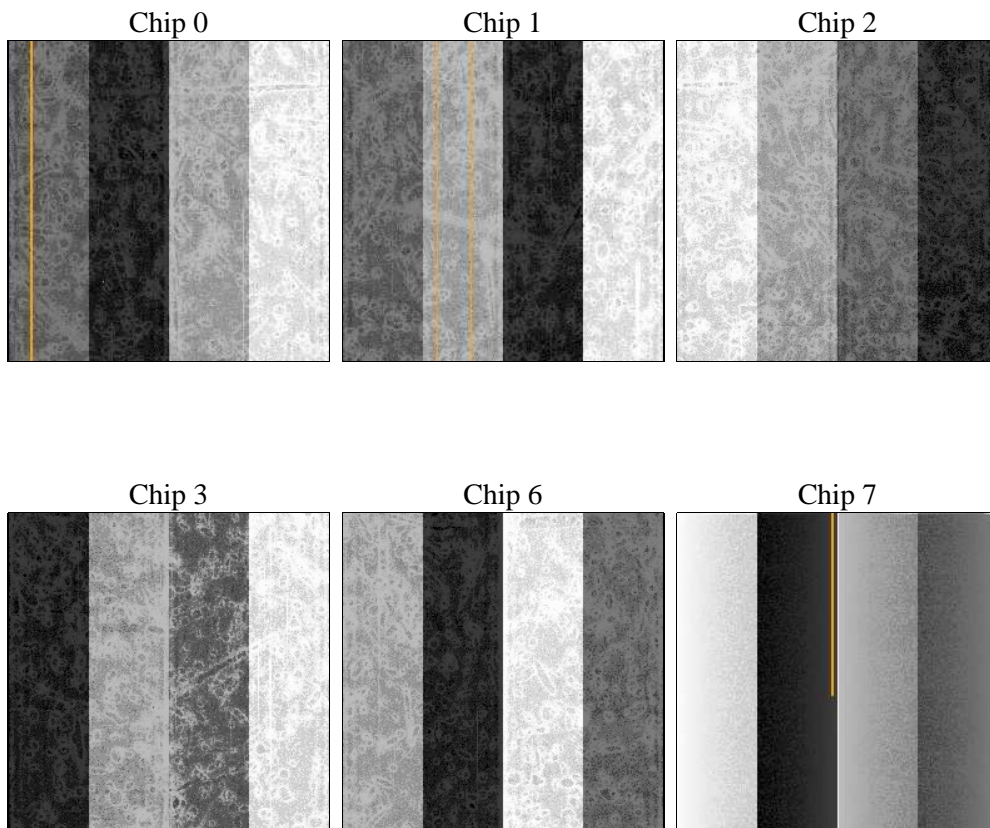
2 OBI

2.1 OBI

2.1.1 Images



2.1.2 Bias



2.1.3 Parameters

obi_num	0	Obi number	sched_exp_time	0.0	[s] Scheduled observation exposure time
ascdsver	8.4.5	Processing system revision	ontime	5498.68729873	Sum of GTIs [s]
caldsver	4.5.1.1	 	ontime0	2245.803006649	Sum of GTIs [s]
date	2012-08-25T19:13:15	Date and time of file creation	ontime1	2294.4596266001	Sum of GTIs [s]
revision	5	Processing version of data	ontime2	2168.1000470966	Sum of GTIs [s]
			ontime3	2148.4898665249	Sum of GTIs [s]
			ontime6	2401.4958069623	Sum of GTIs [s]
			ontime7	5498.68729873	Sum of GTIs [s]
			l1events	1587296	Number of level 1 events

2.1.4 Events

	ccd 0	ccd 1	ccd 2	ccd 3	ccd 6	ccd 7		ccd 0	ccd 1	ccd 2	ccd 3	ccd 6	ccd 7
level 1 events	209118	214501	207071	205133	235836	515637	grade 0 events	104257	107211	103605	102702	115995	124369
rejected events	20250	20678	21190	21483	23094	30346		49%	49%	50%	50%	49%	24%
rejected %	9%	9%	10%	10%	9%	5%	grade 1 events	621	674	628	688	658	364
								0%	0%	0%	0%	0%	0%
							grade 2 events	32973	34039	32286	31789	36694	107008
								15%	15%	15%	15%	15%	20%
							grade 3 events	12002	12132	11710	11750	13211	49813
								5%	5%	5%	5%	5%	9%
							grade 4 events	12085	12313	11722	11806	13306	49659
								5%	5%	5%	5%	5%	9%
							grade 5 events	1599	1568	1474	1494	1742	6988
								0%	0%	0%	0%	0%	1%
							grade 6 events	27551	28128	26558	25603	33536	154442
								13%	13%	12%	12%	14%	29%
							grade 7 events	18030	18436	19088	19301	20694	22994
								8%	8%	9%	9%	8%	4%

2.2 Compared Parameters

Parameter	Planned	Actual
Instrument	ACIS	ACIS
Detector	ACIS-012367	ACIS-012367
Grating	NONE	NONE
Data mode	FAINT	FAINT
Observation mode	SECONDARY	SECONDARY
[deg] Pointing RA	0	145.027756450986
[deg] Pointing Dec	0	-40.01950157277739
[deg] Pointing Roll	0.0	285.2479391884143
[mm] SIM focus pos	-0.782348	-0.6828225247311905
[mm] SIM defocus	0	0.8505141146731063
[mm] SIM translation stage pos	-233.592463	250.466033080201
[mm] SIM translation stage offset	0	-0.01005468664627074
[s] Observation start time (MET)	71995302.608	71995301.83968
Observation start date	2000-04-13T06:41:43	2000-04-13T06:41:41
[s] Observation end time (MET)	72006967.109	72006966.34010801
Observation end date	2000-04-13T09:56:07	2000-04-13T09:56:06
Read mode	TIMED	TIMED

Parameter	Planned	Actual
Obspar format version number	7	7
Obspar file type	PREDICTED	ACTUAL
Obspar update status	NONE	UPDATED
On-chip summing requested	N	N
Subarray requested	NONE	NONE
Alternating exposures requested	N	N
[s] Primary exposure time	0.000000	3.2

2.3 Star Slots

2.4 FID Slots

A Summary

A.1 Status

V&V Scientist	Jen Lauer
V&V Date (YYYY-MM-DD)	2012.08.28
V&V Edition	1
V&V Disposition and Status	OK
V&V Charge Time	5.49868729873

A.2 Comments