

V&V Reference Report

L2 ASCDS Version : 8.4.5

Observation 61945 - L2 Version 3
Chandra X-Ray Center

L2 Processing Date : Sep 1 2012

Contents

1	Front	2
2	OBI	3
2.1	OBI	3
2.1.1	Images	3
2.1.2	Bias	3
2.1.3	Parameters	4
2.1.4	Events	4
2.2	Compared Parameters	5
2.3	Star Slots	6
2.4	FID Slots	6
A	Summary	7
A.1	Status	7
A.2	Comments	7

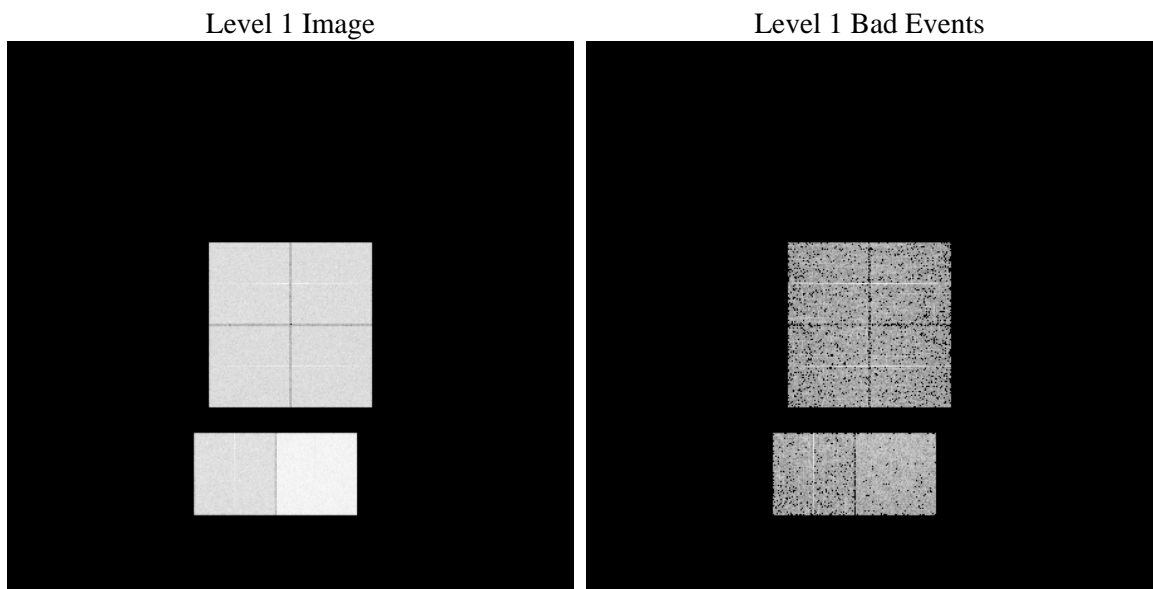
1 Front

seq_num	 	Sequence number
obs_id	61945	Observation id
title	ACIS-012367 diagnostics	Proposal title
observer	CHANDRA engineering request/realtime commanding	Principal investig
object	 	Source name
dtcycle	0	
cycle	P	events from which exps? Prim/Second/Both
ra_targ	0.0	Observer's specified target RA [deg]
dec_targ	0.0	Observer's specified target Dec [deg]
ra_nom	247.4524978523	Nominal RA [deg]
dec_nom	-31.376324261379	Nominal Dec [deg]
roll_nom	261.17536327336	Nominal Roll [deg]
revision	3	Processing version of data
ontime	3968.7801357061	Sum of GTIs [s]
livetime	3918.5250519153	Livetime [s]
ontime0	1778.7848035991	Sum of GTIs [s]
ontime1	1746.415483579	Sum of GTIs [s]
ontime2	1668.6716534644	Sum of GTIs [s]
ontime3	1649.061233595	Sum of GTIs [s]
ontime6	1811.3182936609	Sum of GTIs [s]
ontime7	3968.7801357061	Sum of GTIs [s]
l2events	990587	Number of level 2 events

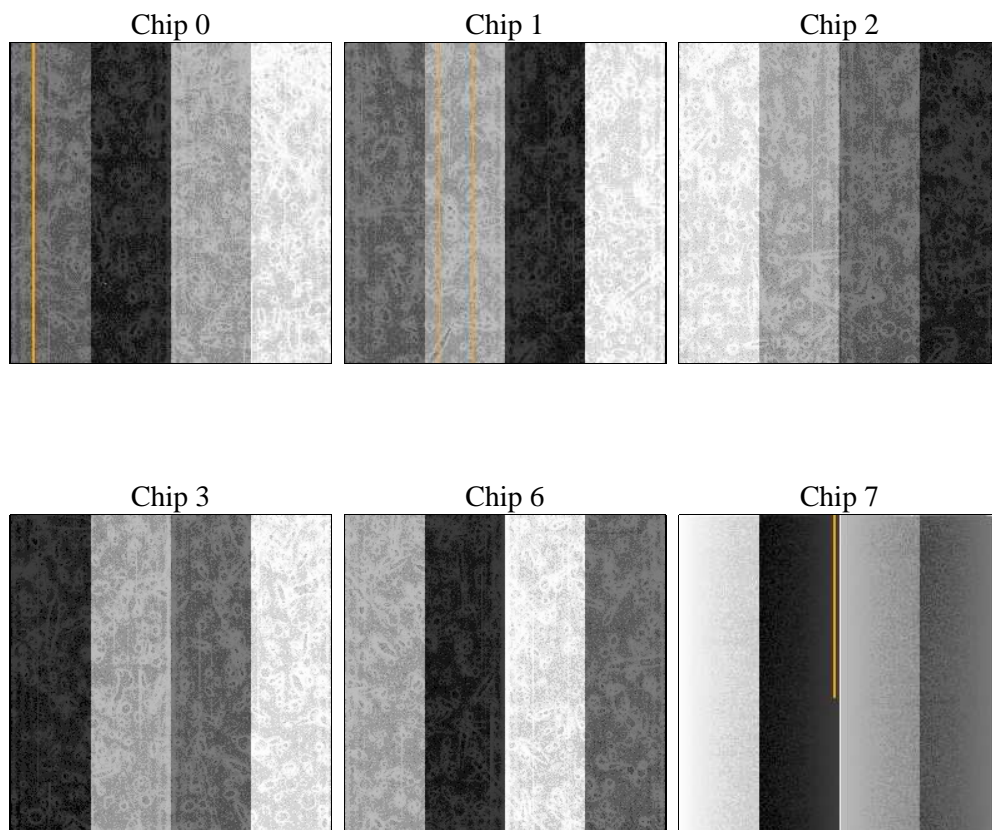
2 OBI

2.1 OBI

2.1.1 Images



2.1.2 Bias



2.1.3 Parameters

obi_num	0	Obi number	sched_exp_time	0.0	[s] Scheduled observation exposure time
ascdsver	8.4.5	Processing system revision	ontime	3968.7801357061	Sum of GTIs [s]
caldsver	4.5.1.1	 	ontime0	1778.7848035991	Sum of GTIs [s]
date	2012-09-01T07:47:03	Date and time of file creation	ontime1	1746.415483579	Sum of GTIs [s]
revision	3	Processing version of data	ontime2	1668.6716534644	Sum of GTIs [s]
			ontime3	1649.061233595	Sum of GTIs [s]
			ontime6	1811.3182936609	Sum of GTIs [s]
			ontime7	3968.7801357061	Sum of GTIs [s]
			l1events	1126366	Number of level 1 events

2.1.4 Events

	ccd 0	ccd 1	ccd 2	ccd 3	ccd 6	ccd 7		ccd 0	ccd 1	ccd 2	ccd 3	ccd 6	ccd 7
level 1 events	156916	154629	149302	148041	168649	348829	grade 0 events	78516	76722	74229	74291	82832	84806
rejected events	14434	14629	14402	14121	15680	20817		50%	49%	49%	50%	49%	24%
rejected %	9%	9%	9%	9%	9%	5%	grade 1 events	462	407	450	470	478	221
								0%	0%	0%	0%	0%	0%
							grade 2 events	24815	24809	23817	23604	26402	72089
								15%	16%	15%	15%	15%	20%
							grade 3 events	9056	8909	8455	8374	9424	33036
								5%	5%	5%	5%	5%	9%
							grade 4 events	9037	8776	8445	8411	9370	32952
								5%	5%	5%	5%	5%	9%
							grade 5 events	1087	1115	1035	1174	1248	4602
								0%	0%	0%	0%	0%	1%
							grade 6 events	21058	20784	19954	19240	24941	105129
								13%	13%	13%	12%	14%	30%
							grade 7 events	12885	13107	12917	12477	13954	15994
								8%	8%	8%	8%	8%	4%

2.2 Compared Parameters

Parameter	Planned	Actual
Instrument	ACIS	ACIS
Detector	ACIS-012367	ACIS-012367
Grating	NONE	NONE
Data mode	FAINT	FAINT
Observation mode	SECONDARY	SECONDARY
[deg] Pointing RA	0	247.4524978522983
[deg] Pointing Dec	0	-31.37632426137871
[deg] Pointing Roll	0.0	261.1753632733584
[mm] SIM focus pos	-0.782348	-0.7809083437167272
[mm] SIM defocus	0	0.7524282956875696
[mm] SIM translation stage pos	-233.592463	250.466033080201
[mm] SIM translation stage offset	0	-0.01005468664627074
[s] Observation start time (MET)	84291885.71273699	84291884.944288
Observation start date	2000-09-02T14:24:46	2000-09-02T14:24:44
[s] Observation end time (MET)	84314247.11357699	84314246.345128
Observation end date	2000-09-02T20:37:27	2000-09-02T20:37:26
Read mode	TIMED	TIMED

Parameter	Planned	Actual
Obspar format version number	7	7
Obspar file type	PREDICTED	ACTUAL
Obspar update status	NONE	UPDATED
On-chip summing requested	N	N
Subarray requested	NONE	NONE
Alternating exposures requested	N	N
[s] Primary exposure time	3.2	3.2

2.3 Star Slots

2.4 FID Slots

A Summary

A.1 Status

V&V Scientist	Beth Sundheim
V&V Date (YYYY-MM-DD)	2012.09.09
V&V Edition	1
V&V Disposition and Status	OK
V&V Charge Time	3.9687801357061

A.2 Comments