

# V&V Reference Report

## L2 ASCDS Version : 7.6.10

Observation 61885 - L2 Version 001  
Chandra X-Ray Center

L2 Processing Date : Jun 12 2007

## Contents

<b>1</b>	<b>Front</b>	<b>2</b>
<b>2</b>	<b>OBI</b>	<b>3</b>
2.1	OBI . . . . .	3
2.1.1	Images . . . . .	3
2.1.2	Bias . . . . .	3
2.1.3	Parameters . . . . .	4
2.1.4	Events . . . . .	4
2.2	Compared Parameters . . . . .	5
2.3	Star Slots . . . . .	6
2.4	FID Slots . . . . .	6
<b>A</b>	<b>Summary</b>	<b>7</b>
A.1	Status . . . . .	7
A.2	Comments . . . . .	7

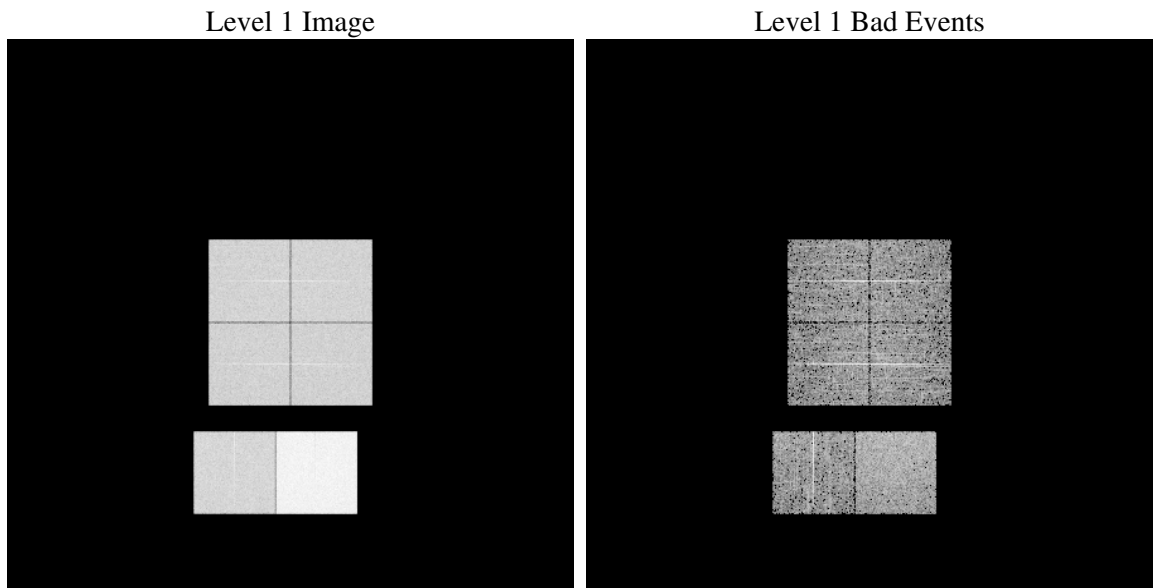
# 1 Front

seq_num	&#160
obs_id	61885
title	ACIS-012367 diagnostics
observer	CHANDRA engineering request/realtime commanding
object	&#160
dtcycle	0
cycle	P
ra_targ	0.0
dec_targ	0.0
ra_nom	287.76759164246
dec_nom	-60.015991540599
roll_nom	262.67120172037
revision	2
ontime	5425.1155070662
livetime	5356.4194279034
ontime0	2362.4828930497
ontime1	2391.6932630092
ontime2	2249.1285732388
ontime3	2223.0094194561
ontime6	2446.8729031682
ontime7	5425.1155070662
l2events	1256084

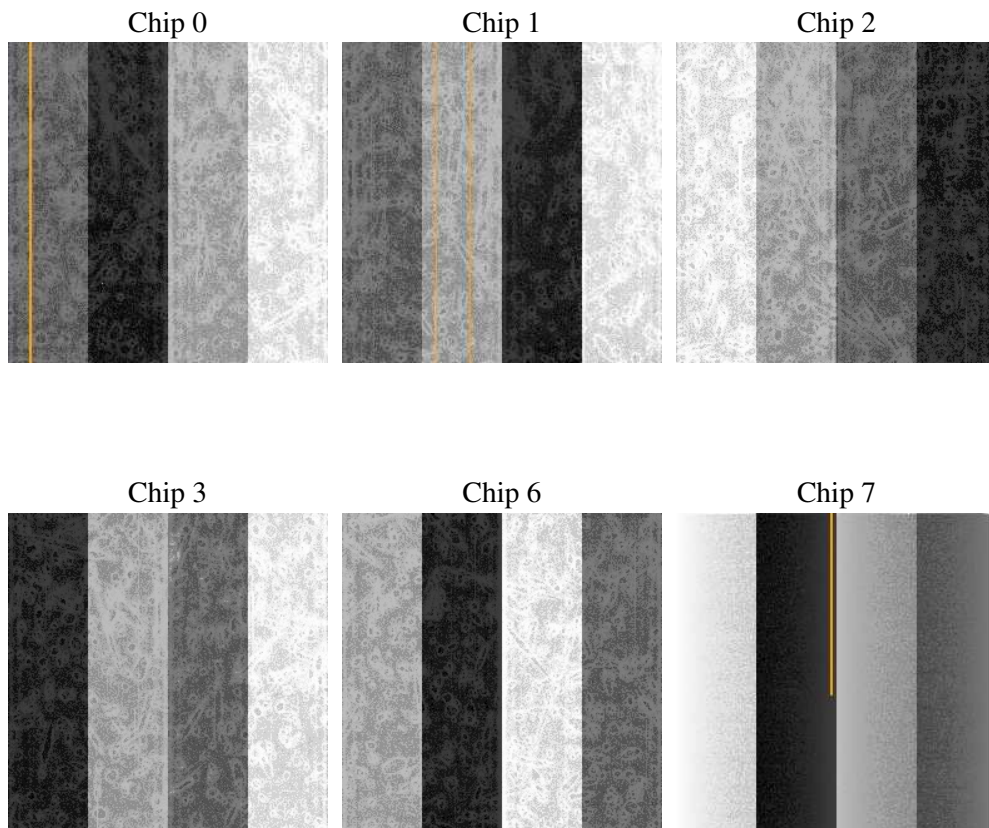
## 2 OBI

### 2.1 OBI

#### 2.1.1 Images



#### 2.1.2 Bias



### 2.1.3 Parameters

obi_num	0
ascdsver	7.6.10
caldsver	3.4.0
date	2007-06-12T19:36:20
revision	2

sched_exp_time	0.0
ontime	5425.1155070662
ontime0	2362.4828930497
ontime1	2391.6932630092
ontime2	2249.1285732388
ontime3	2223.0094194561
ontime6	2446.8729031682
ontime7	5425.1155070662
l1events	1429446

### 2.1.4 Events

	ccd 0	ccd 1	ccd 2	ccd 3	ccd 6	ccd 7
level 1 events	196204	197202	188607	187708	212564	447161
rejected events	18378	17833	18302	19046	19302	27524
rejected %	9%	9%	9%	10%	9%	6%

	ccd 0	ccd 1	ccd 2	ccd 3	ccd 6	ccd 7
grade 0 events	98192	98882	95128	94861	105310	108741
	50%	50%	50%	50%	49%	24%
grade 1 events	548	496	493	531	555	296
	0%	0%	0%	0%	0%	0%
grade 2 events	31162	31508	29600	29411	33405	92872
	15%	15%	15%	15%	15%	20%
grade 3 events	11201	11455	10590	10608	11876	42866
	5%	5%	5%	5%	5%	9%
grade 4 events	11392	11350	10832	10665	12013	42448
	5%	5%	5%	5%	5%	9%
grade 5 events	1422	1376	1281	1272	1554	6252
	0%	0%	0%	0%	0%	1%
grade 6 events	25879	26174	24155	23117	30658	132710
	13%	13%	12%	12%	14%	29%
grade 7 events	16408	15961	16528	17243	17193	20976
	8%	8%	8%	9%	8%	4%

## 2.2 Compared Parameters

Parameter	Planned	Actual	Parameter	Planned	Actual
Instrument	ACIS	ACIS	Obspar format version number	6	6
Detector	ACIS-012367	ACIS-012367	Obspar file type	PREDICTED	ACTUAL
Grating	NONE	NONE	Obspar update status	NONE	UPDATED
Data mode	FAINT	FAINT	On-chip summing requested	N	N
Observation mode	SECONDARY	SECONDARY	Subarray requested	NONE	NONE
Pointing RA	0	287.7675916424554	Alternating exposures requested	N	N
Pointing Dec	0	-60.01599154059871	Primary exposure time	0.000000	3.2
Pointing Roll	0.0	262.6712017203657			
SIM focus pos (mm)	-0.782348	-0.6828225247311905			
SIM defocus (mm)	0	0.8505141146731063			
SIM translation stage pos (mm)	-233.592463	250.4635187648994			
SIM translation stage offset (mm)	0	-0.007540371344731511			
Observation start time	87946304	87946303.23189799			
Observation start date	2000-10-14T21:31:44	2000-10-14T21:31:43			
Observation end time	87957089.051	87957088.282305			
Observation end date	2000-10-15T00:31:29	2000-10-15T00:31:28			
Read mode	TIMED	TIMED			

## **2.3 Star Slots**

## **2.4 FID Slots**

## A Summary

### A.1 Status

V&V Scientist	Jen Lauer
V&V Date (YYYY-MM-DD)	2007.06.13
V&V Edition	1
V&V Disposition and Status	OK
V&V Charge Time	5.4251155

### A.2 Comments