

V&V Reference Report

L2 ASCDS Version : 7.6.7

Observation 6185 - L2 Version 002
Chandra X-Ray Center

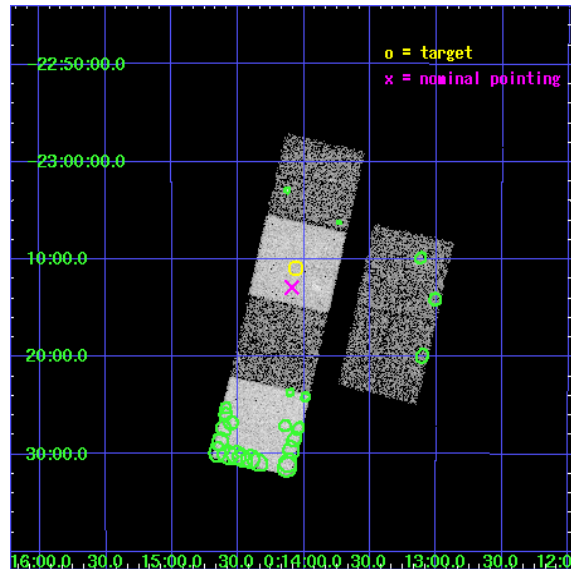
L2 Processing Date: Feb 16 2006

Contents

1	Front	2
2	OBI	3
2.1	OBI	3
2.1.1	Images	3
2.1.2	Bias	3
2.1.3	Parameters	4
2.1.4	Events	4
2.2	Compared Parameters	5
2.3	Aspect	6
2.4	Star Slots	9
2.4.1	Slot 3	9
2.4.2	Slot 4	10
2.4.3	Slot 5	11
2.4.4	Slot 6	12
2.4.5	Slot 7	13
2.5	FID Slots	14
2.5.1	Slot 0	14
2.5.2	Slot 1	15
2.5.3	Slot 2	16
3	Point Sources	17
A	Summary	18
A.1	Status	18
A.2	Comments	18

1 Front

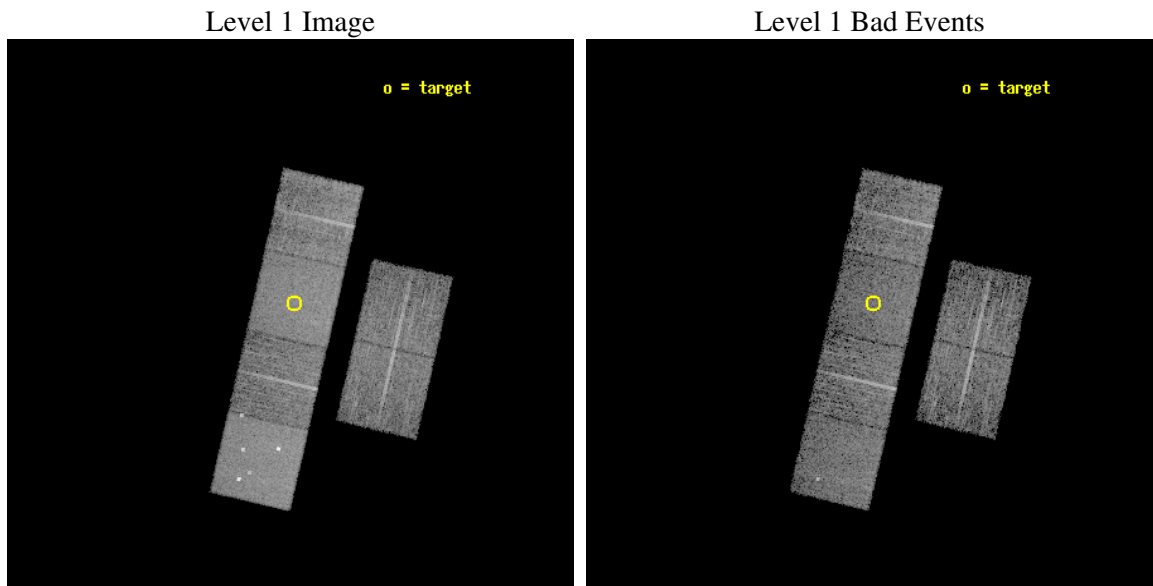
seq_num	600345
obs_id	6185
title	An X-ray Search for Extragalactic Supernova Remnants in Three Nearby Galaxies: NGC 45, NGC 247 and NGC 300
observer	Dr. Thomas Pannuti
object	NGC 45
dtcycle	0
cycle	P
ra_targ	3.516667
dec_targ	-23.181667
ra_nom	3.5230905133241
dec_nom	-23.215201430838
roll_nom	283.00916099166
revision	2
ontime	6092.7999773026
livetime	6015.6492753462
ontime2	6092.7999773026
ontime3	6092.7999773026
ontime5	6092.7999773026
ontime6	6092.7999773026
ontime7	6092.7999773026
ontime8	6092.7999773026
l2events	73712



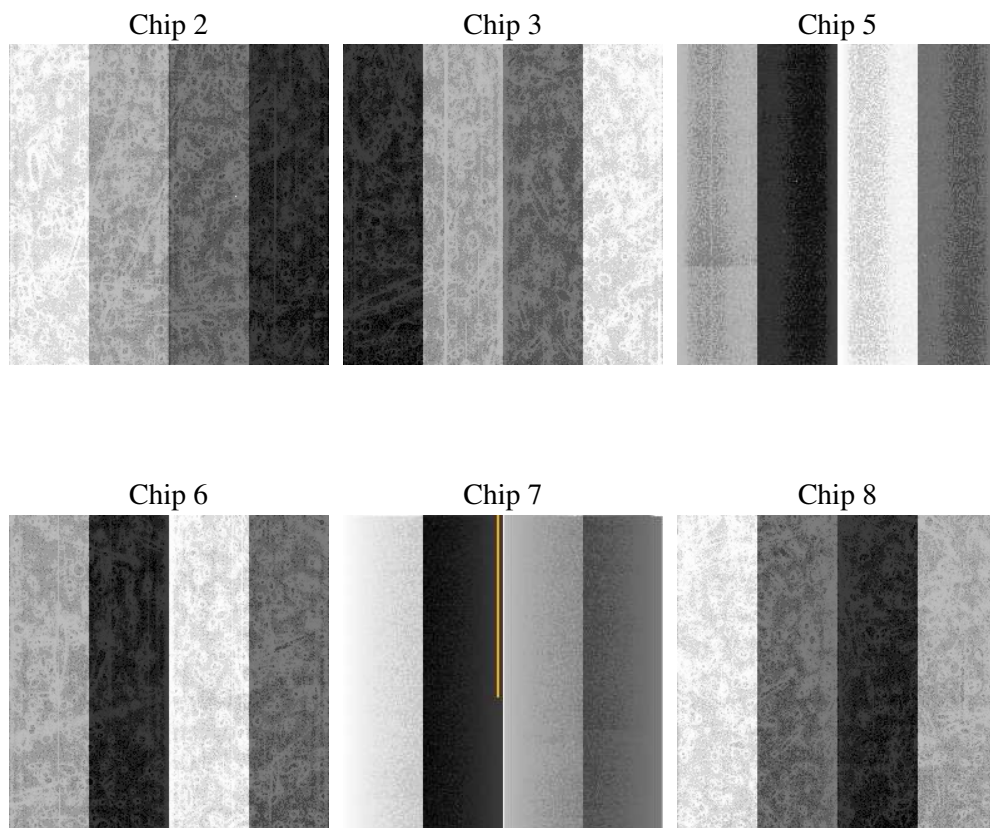
2 OBI

2.1 OBI

2.1.1 Images



2.1.2 Bias



2.1.3 Parameters

obi_num	0
ascdsver	7.6.7
caldbver	3.2.1
date	2006-02-17T03:58:01
revision	2

sched_exp_time	6000.000000
ontime	6096.3238550425
ontime2	6096.3238351047
ontime3	6096.3238351047
ontime5	6096.3238351047
ontime6	6096.3238351047
ontime7	6096.3238550425
ontime8	6096.3238351047
l1events	324966

2.1.4 Events

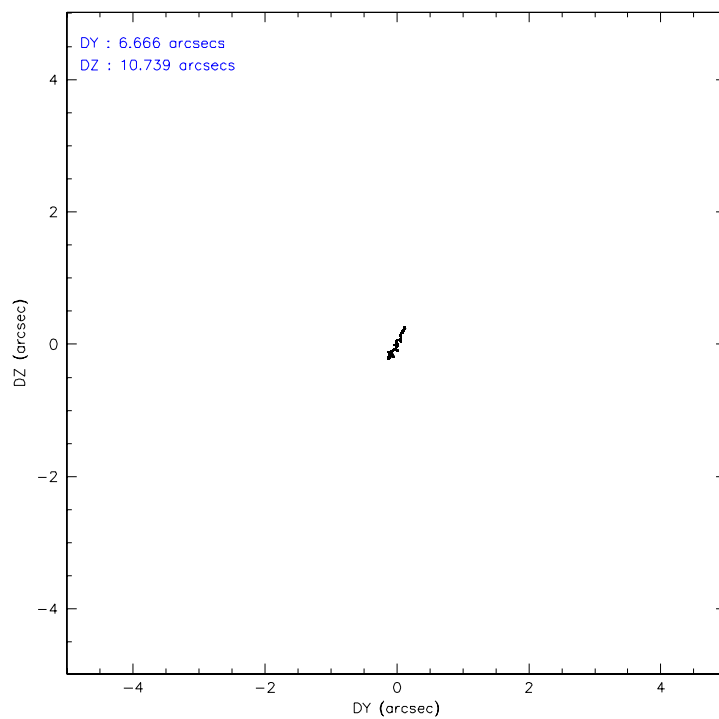
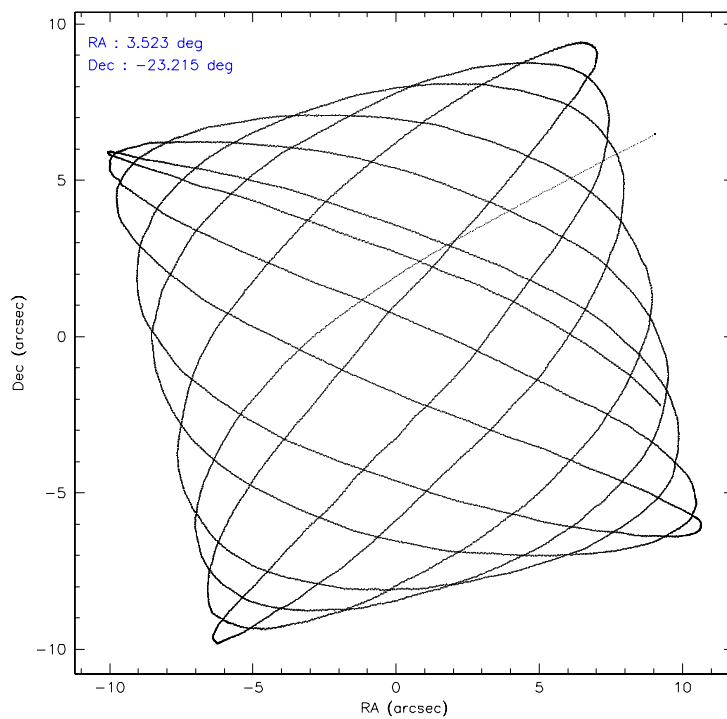
	ccd 2	ccd 3	ccd 5	ccd 6	ccd 7	ccd 8
level 1 events	44245	43560	71793	46922	62055	56391
rejected events	38833	37932	37822	41365	36675	44447
rejected %	87%	87%	52%	88%	59%	78%

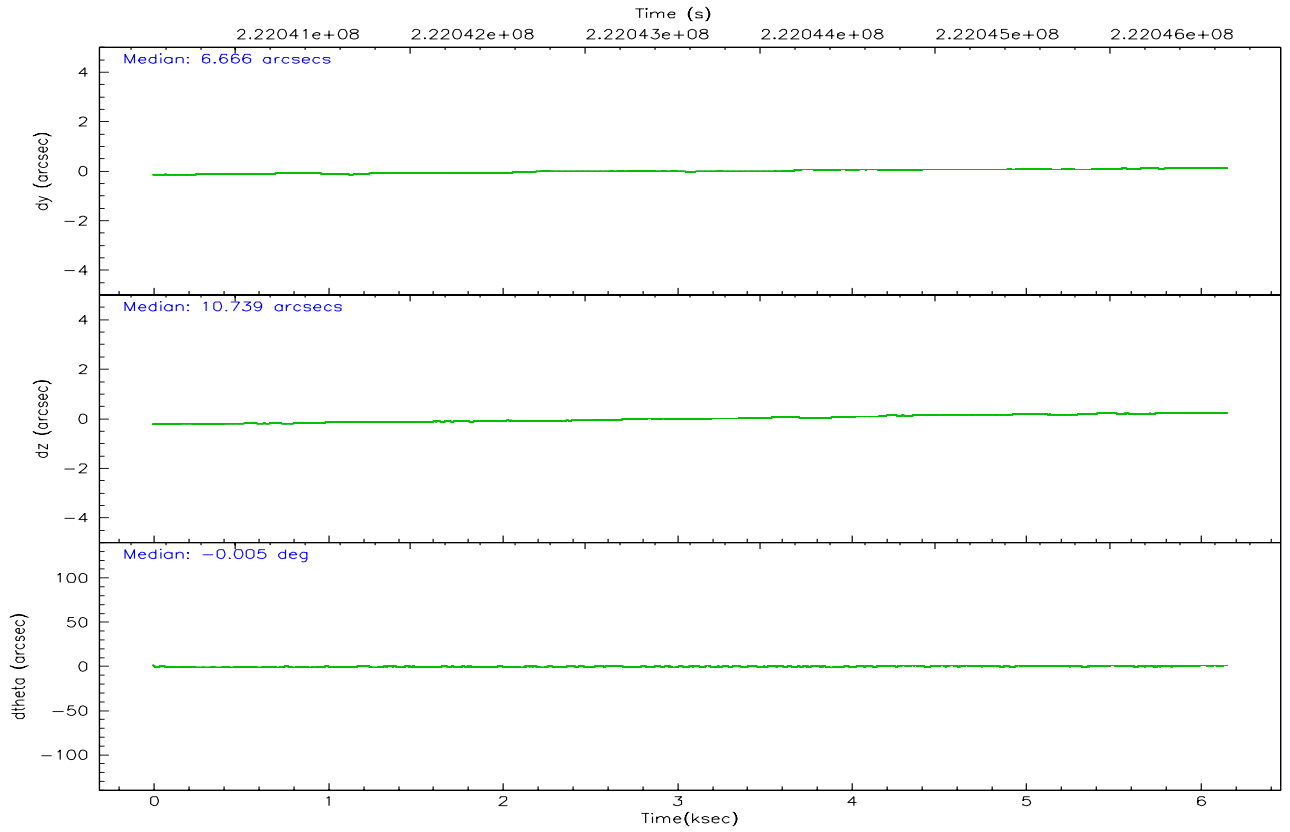
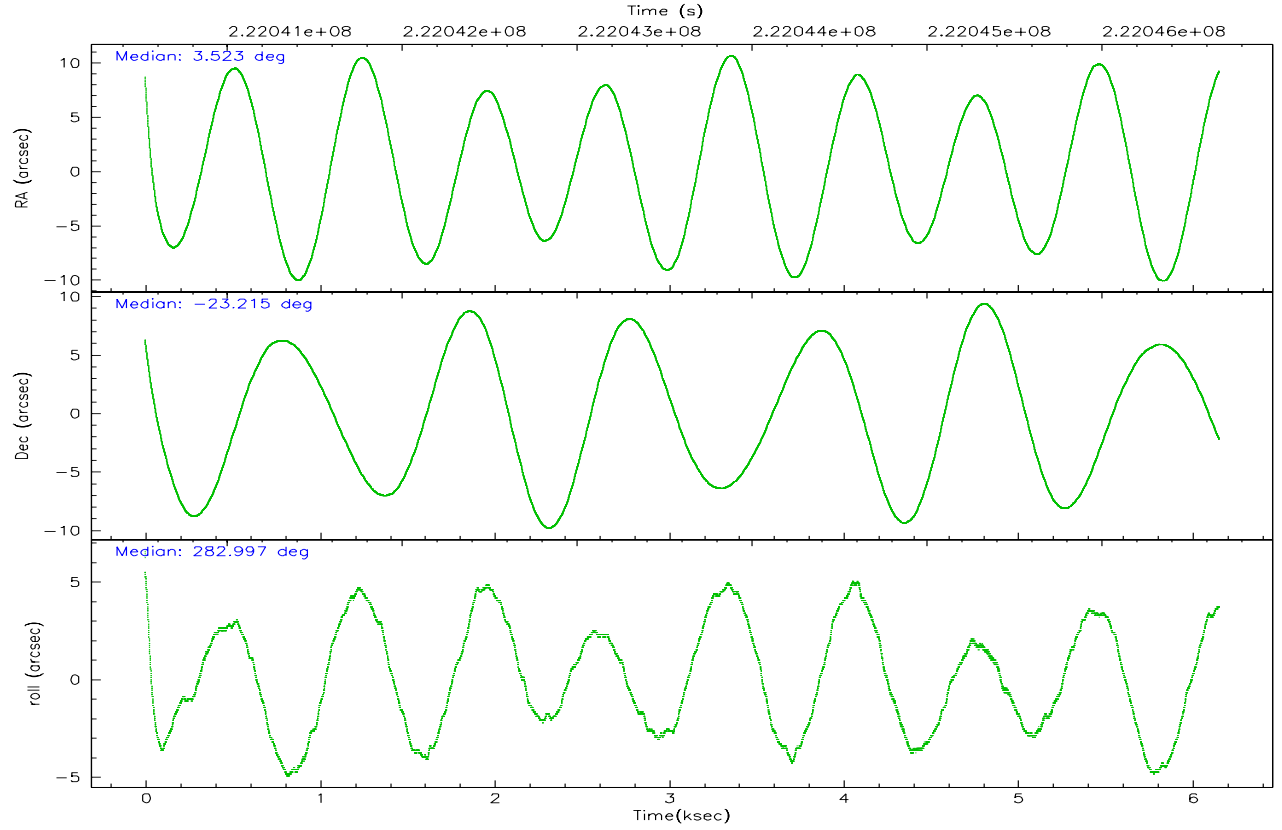
	ccd 2	ccd 3	ccd 5	ccd 6	ccd 7	ccd 8
grade 0 events	2484	2624	4417	2277	1633	3900
	5%	6%	6%	4%	2%	6%
grade 1 events	28	25	111	22	41	34
	0%	0%	0%	0%	0%	0%
grade 2 events	1088	1000	10521	1135	6297	2617
	2%	2%	14%	2%	10%	4%
grade 3 events	486	524	694	521	1362	1168
	1%	1%	0%	1%	2%	2%
grade 4 events	443	562	641	519	1247	1110
	1%	1%	0%	1%	2%	1%
grade 5 events	1818	1877	3286	1975	4004	2632
	4%	4%	4%	4%	6%	4%
grade 6 events	912	922	17719	1112	14851	3155
	2%	2%	24%	2%	23%	5%
grade 7 events	36986	36026	34404	39361	32620	41775
	83%	82%	47%	83%	52%	74%

2.2 Compared Parameters

Parameter	Planned	Actual	Parameter	Planned	Actual
Instrument	ACIS	ACIS	Obspar format version number	6	6
Detector	ACIS-235678	ACIS-235678	Obspar file type	PREDICTED	ACTUAL
Grating	NONE	NONE	Obspar update status	NONE	UPDATED
Data mode	VFAINT	VFAINT	On-chip summing requested	N	N
Observation mode	POINTING	POINTING	Subarray requested	NONE	NONE
Pointing RA	3.502628	3.523090513324107	Alternating exposures requested	N	N
Pointing Dec	-23.195544	-23.21520143083833	Primary exposure time	0.000000	3.2
Pointing Roll	282.844470	283.009160991664			
SIM focus pos (mm)	-0.684267	-0.6828225247311905			
SIM defocus (mm)	0	0.001444936568705701			
SIM translation stage pos (mm)	-190.132523	-190.1425803651734			
SIM translation stage offset (mm)	0	0.01005778216563158			
Observation start time	222040677.184000	222039648.06226			
Observation start date	2005-01-13T21:56:53	2005-01-13T21:40:48			
Observation end time	222046677.184000	222047581.05012			
Observation end date	2005-01-13T23:36:53	2005-01-13T23:53:01			
Read mode	TIMED	TIMED			

2.3 Aspect



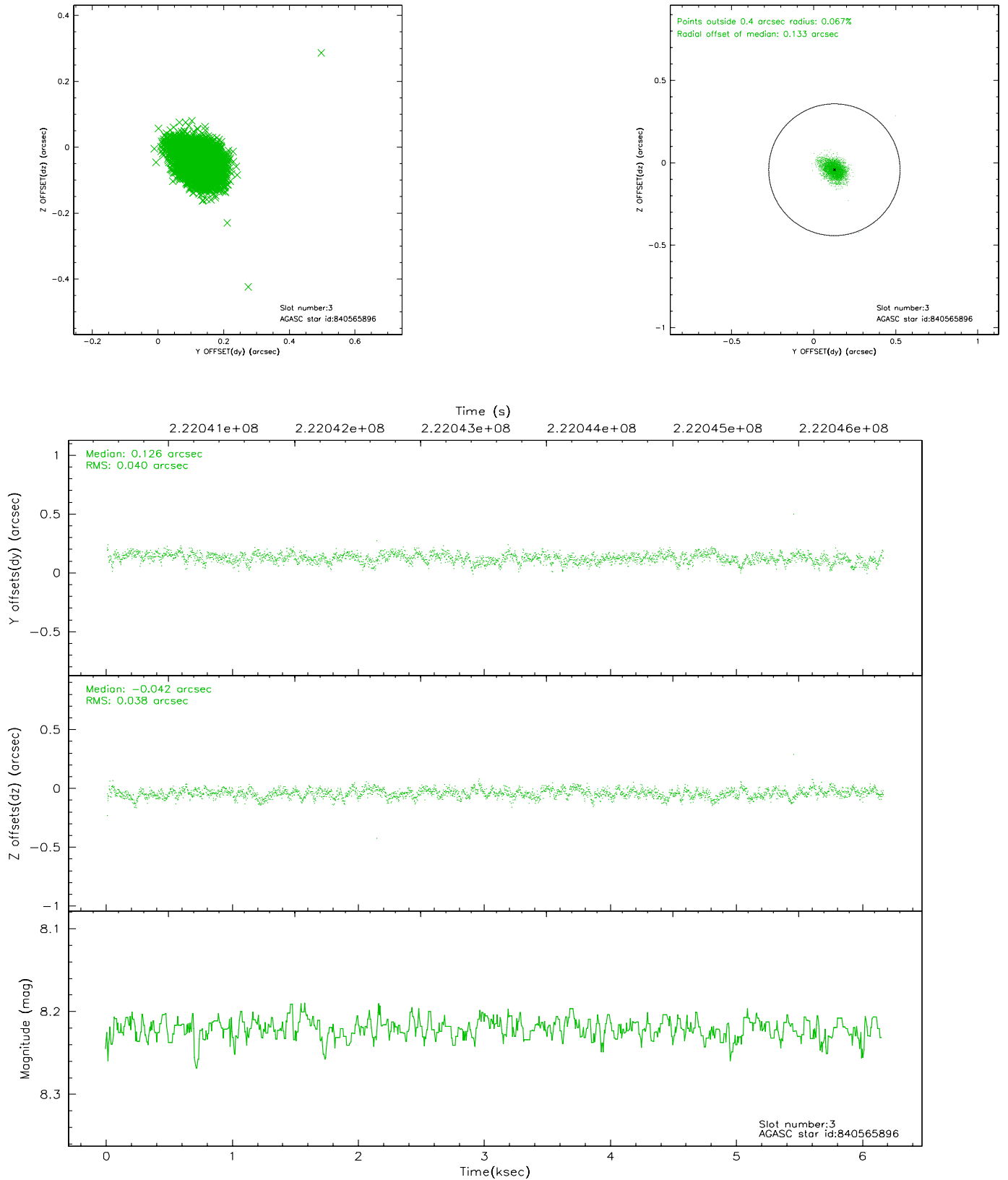


Slot Statistics

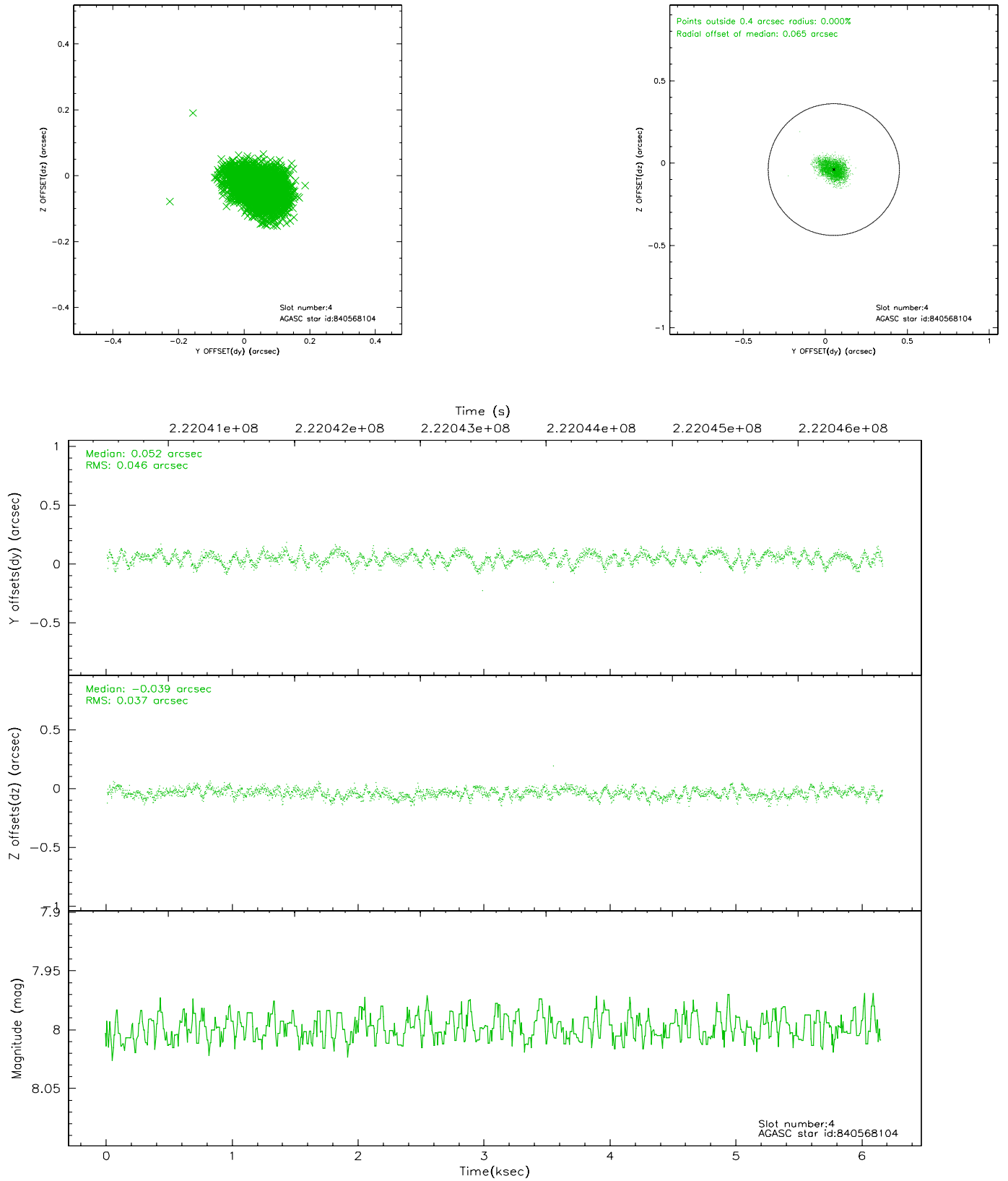
slot	status	id	mag	n_pts	med_dy	med_dz	dr1	dr2	ra	dec	mean_y	mean_z
0	FID	ACIS-S-2	7.10	1502	-0.045	0.011	0.009	0.022	0.000000	0.000000	-759.42	-1731.97
1	FID	ACIS-S-4	7.20	1502	0.034	0.019	0.008	0.034	0.000000	0.000000	2153.47	175.59
2	FID	ACIS-S-5	7.23	1503	-0.022	-0.020	0.008	0.022	0.000000	0.000000	-1811.04	170.23
3	GUIDE	840565896	8.22	3004	0.126	-0.042	0.056	0.094	3.323646	-23.732514	1754.55	-1004.12
4	GUIDE	840568104	8.00	3005	0.052	-0.039	0.063	0.101	3.814856	-22.890920	-837.30	1253.11
5	GUIDE	840569088	8.00	3005	-0.054	0.074	0.053	0.092	2.901742	-23.632364	1097.09	-2281.51
6	GUIDE	840570320	8.75	2999	-0.087	-0.004	0.074	0.118	3.286958	-22.935511	-1070.39	-489.60
7	GUIDE	840565040	9.56	3000	-0.033	0.011	0.112	0.178	4.068979	-22.578007	-1745.96	2329.04

2.4 Star Slots

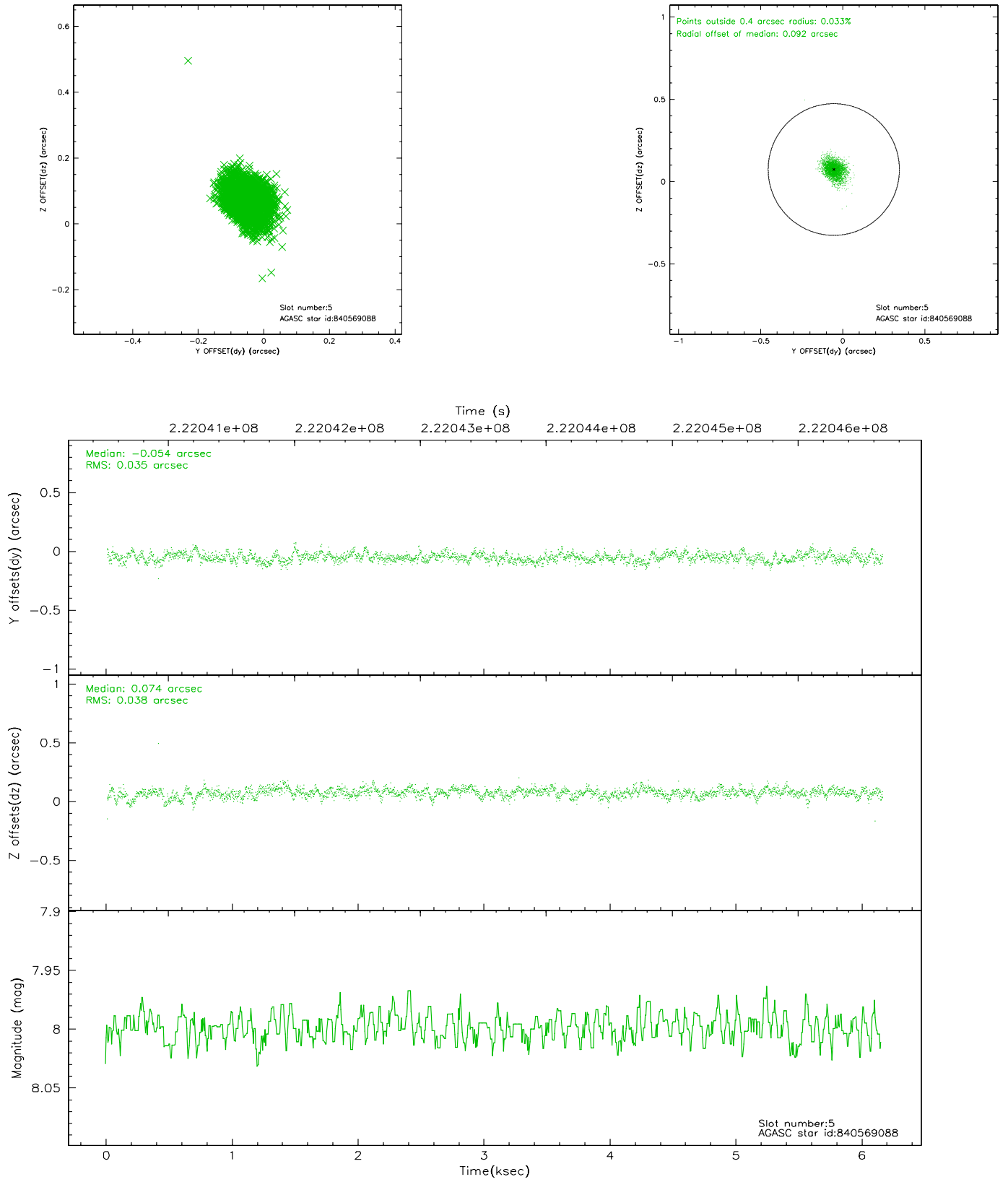
2.4.1 Slot 3



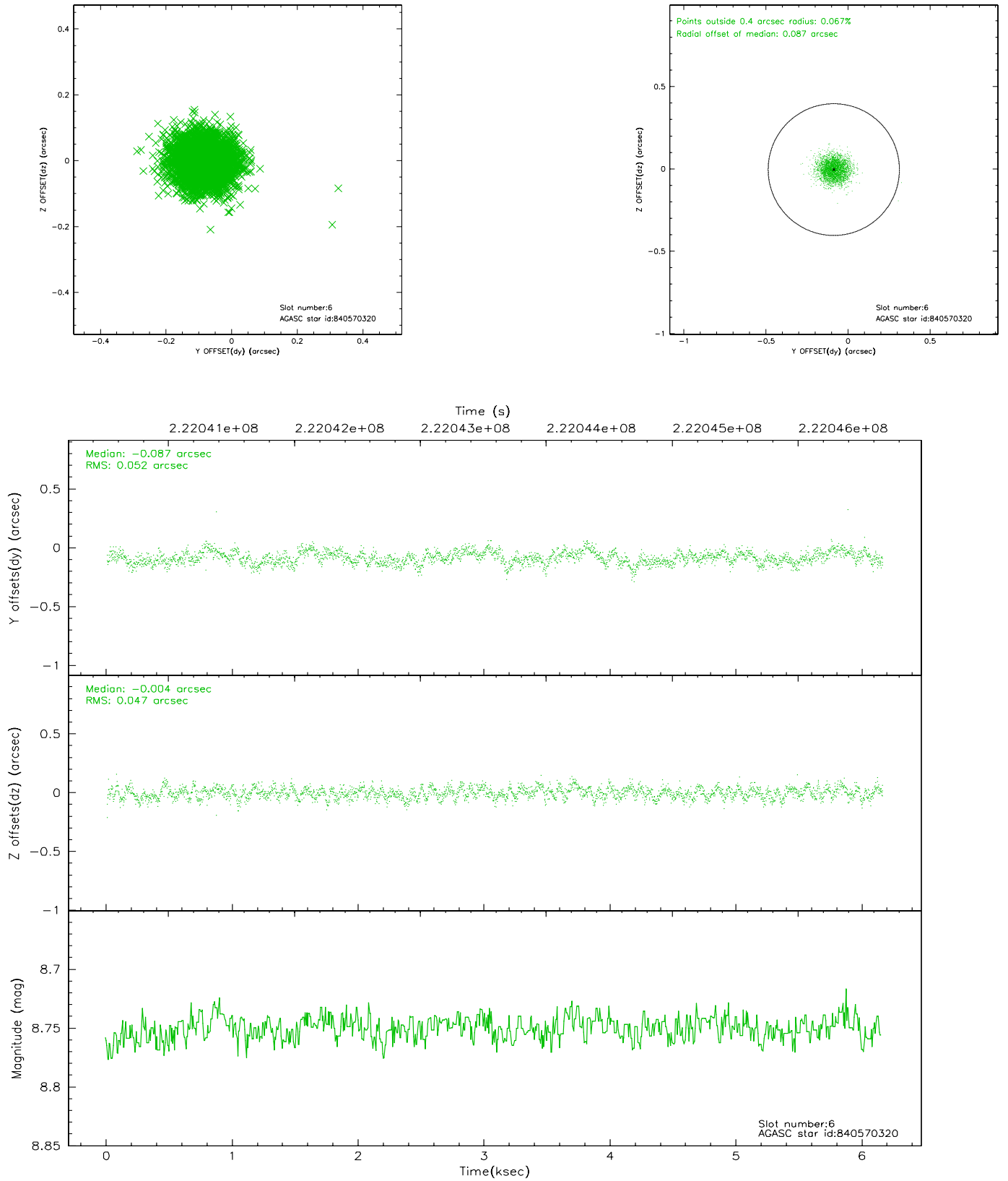
2.4.2 Slot 4



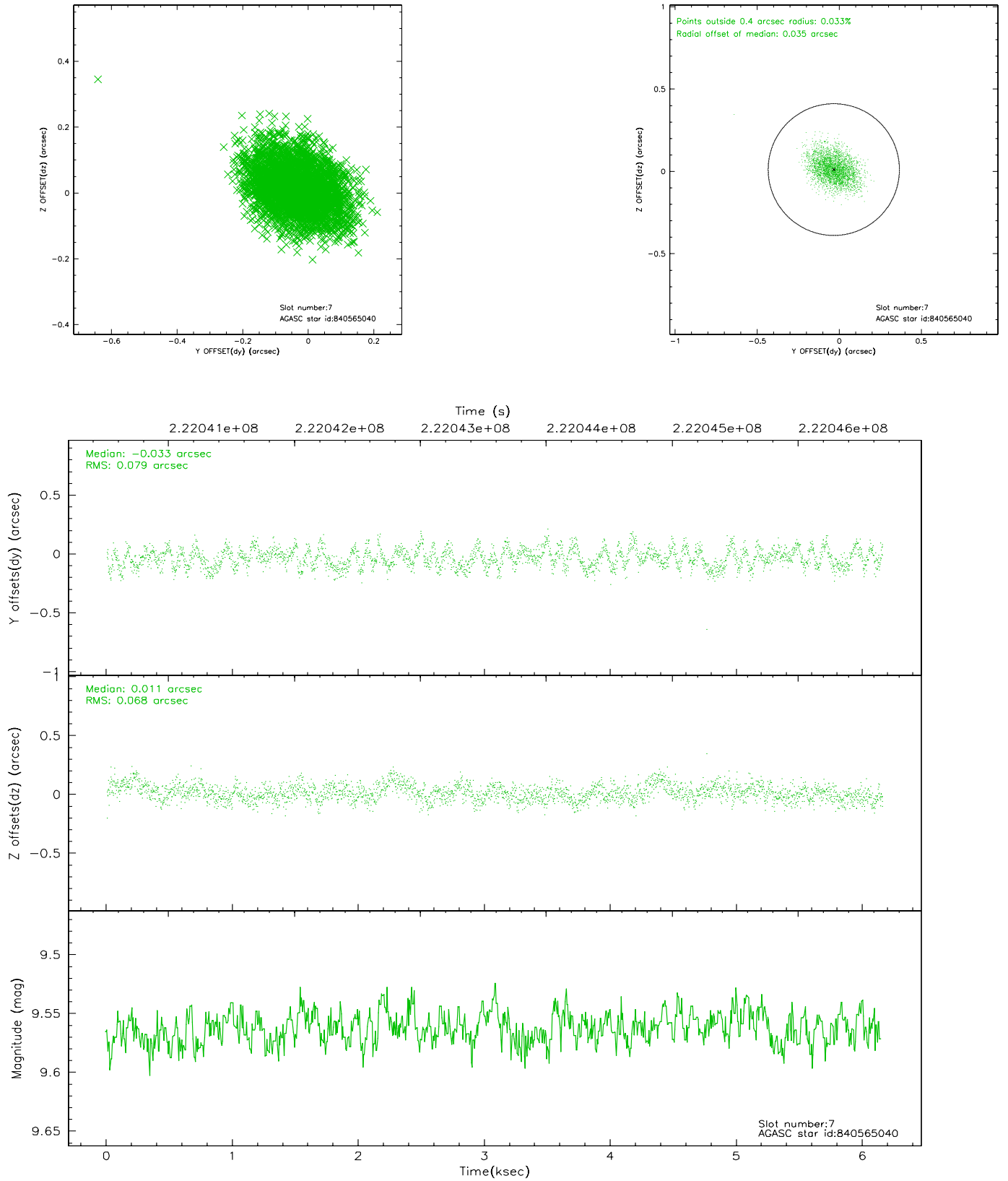
2.4.3 Slot 5



2.4.4 Slot 6

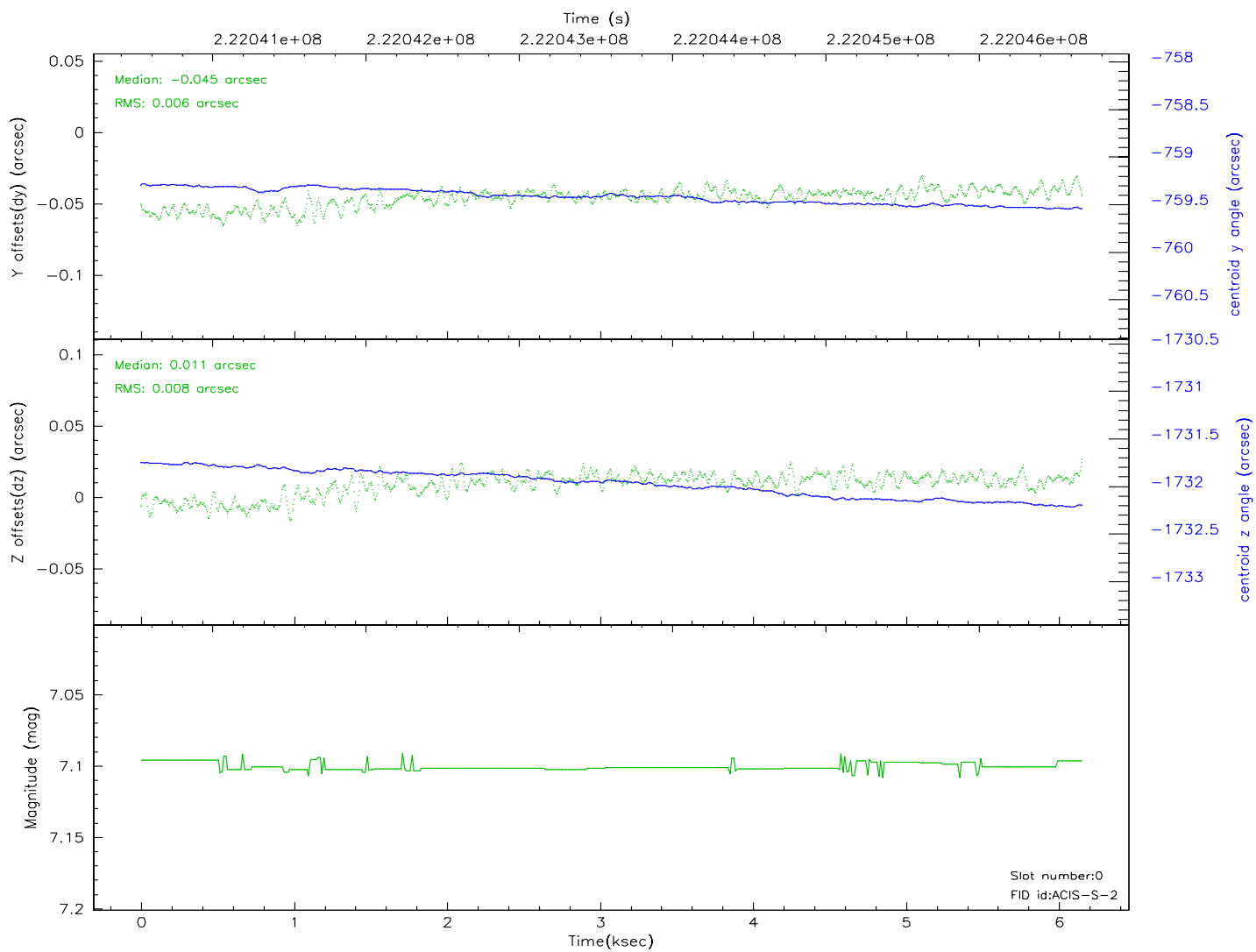
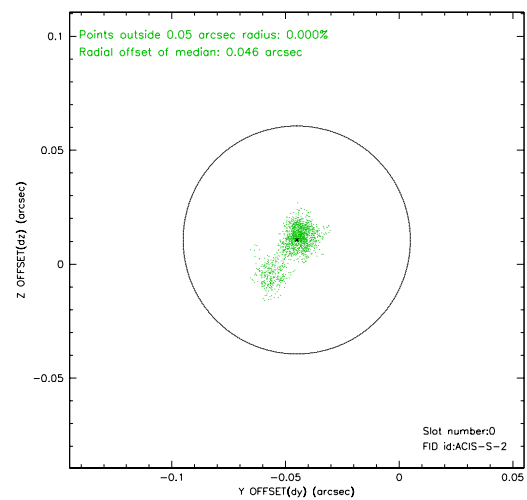
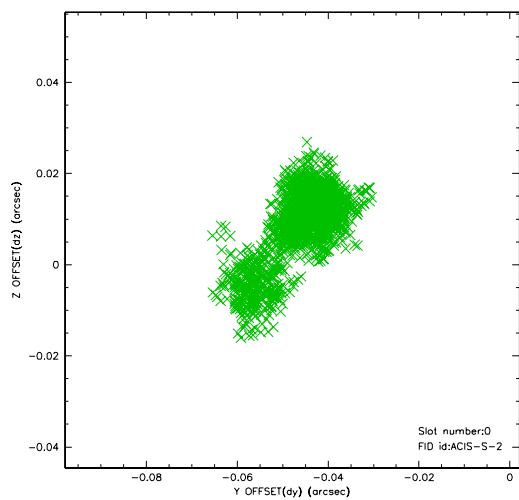


2.4.5 Slot 7

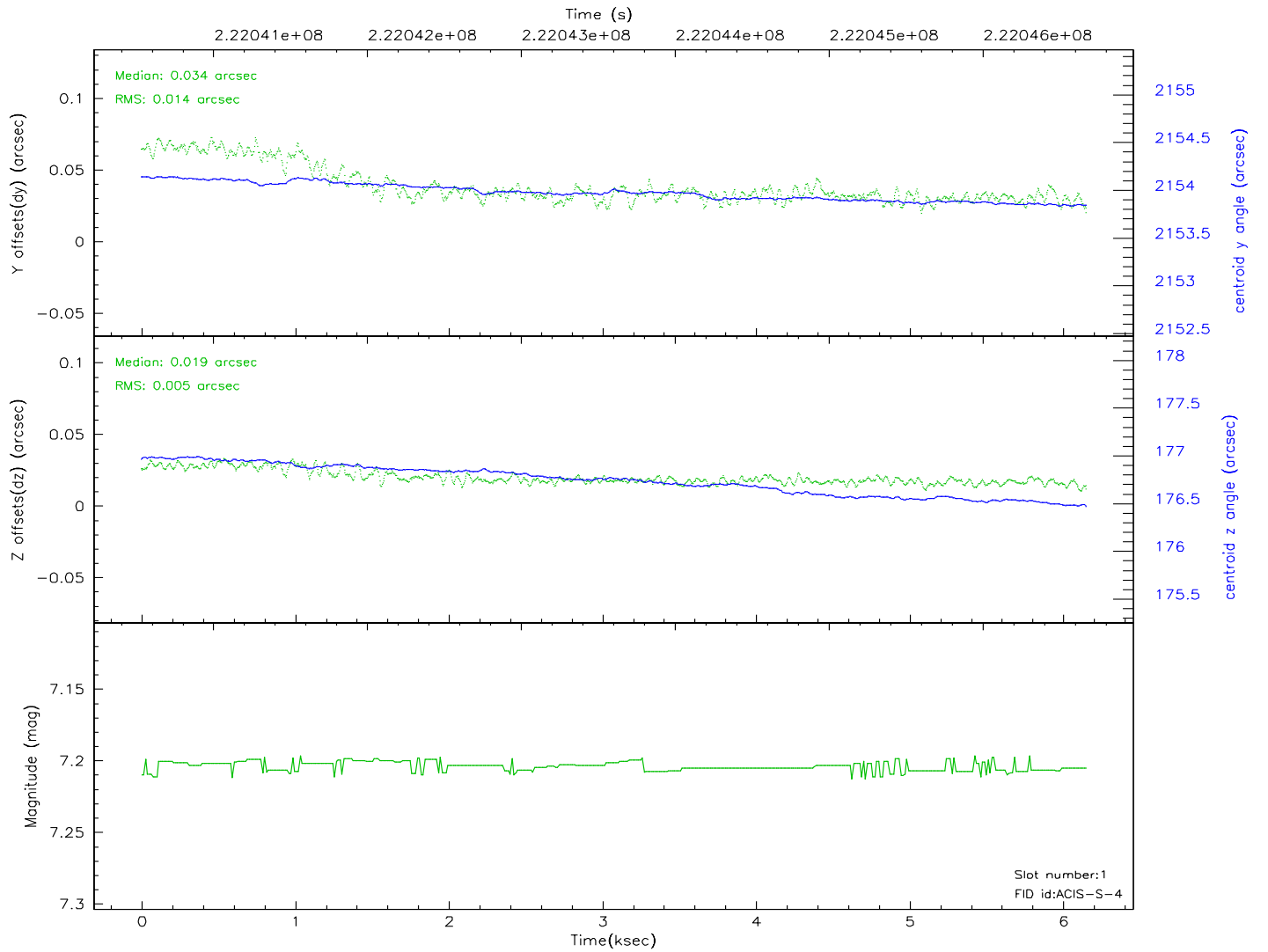
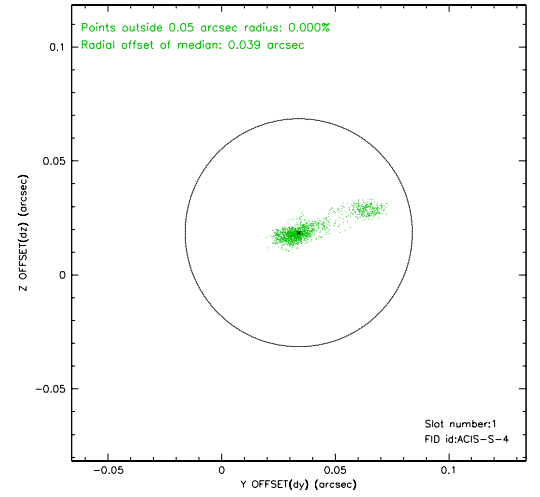
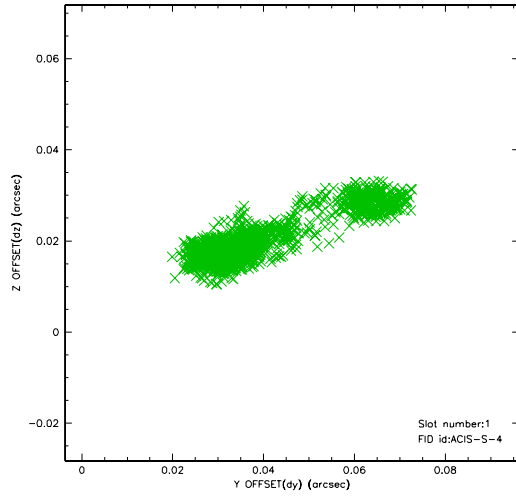


2.5 FID Slots

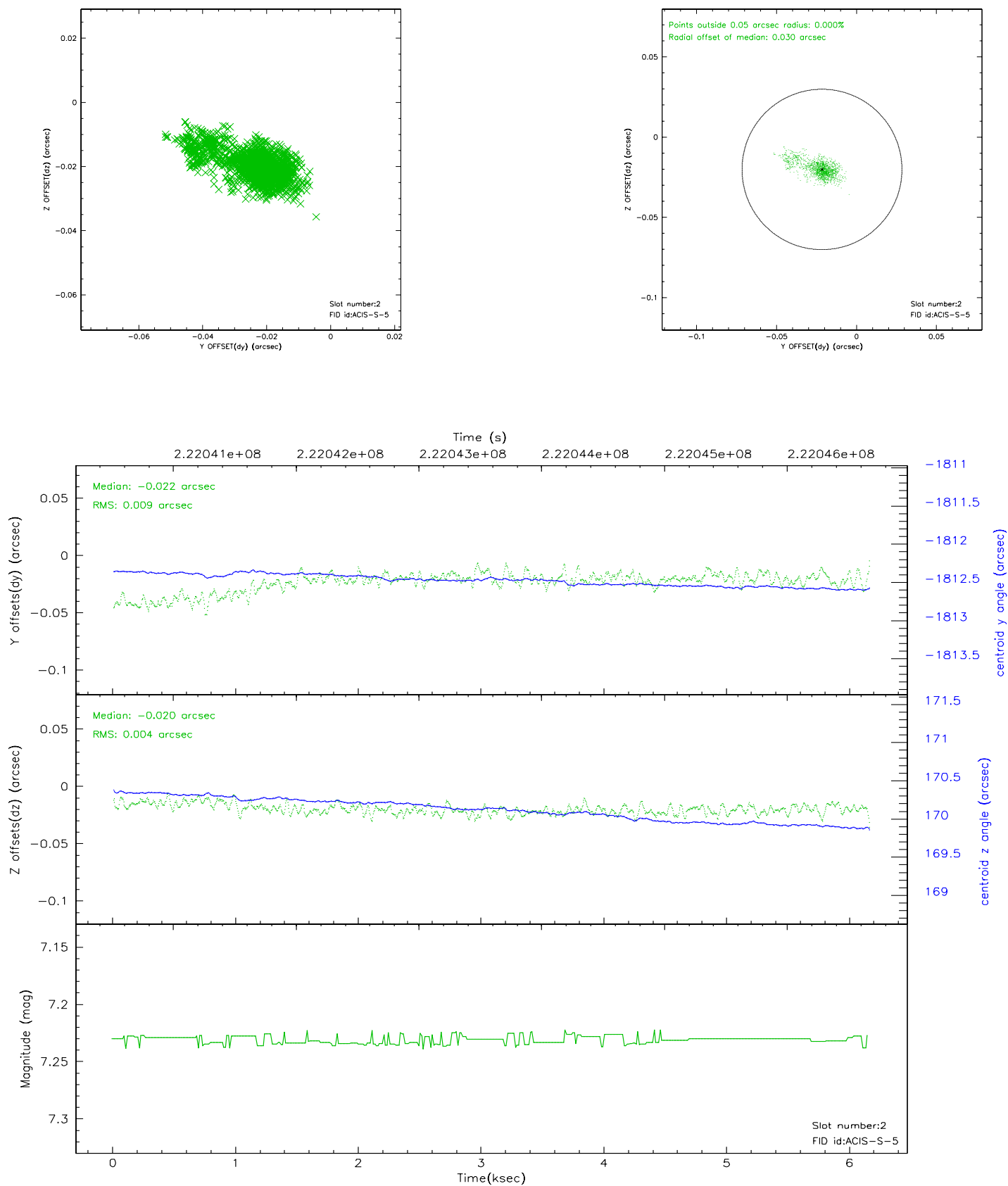
2.5.1 Slot 0



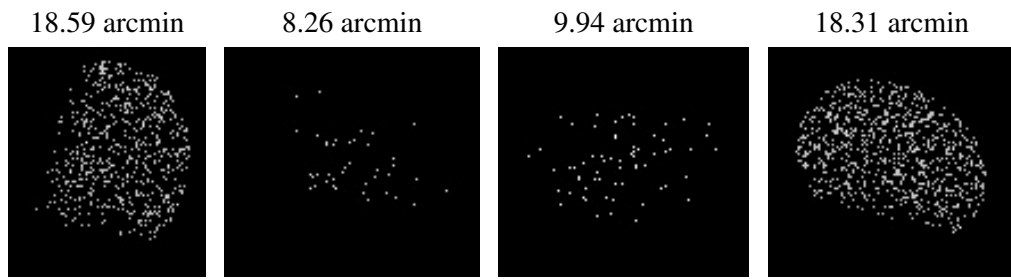
2.5.2 Slot 1



2.5.3 Slot 2



3 Point Sources



A Summary

A.1 Status

V&V Scientist	Beth Sundheim
V&V Date (YYYY-MM-DD)	2006.02.17
V&V Edition	1
V&V Disposition and Status	OK
V&V Charge Time	6.092799

A.2 Comments

Charge time:

Using existing charge time of 6.092799.