

V&V Reference Report

L2 ASCDS Version : 7.6.9

Observation 61615 - L2 Version 001
Chandra X-Ray Center

L2 Processing Date : Nov 23 2006

Contents

1	Front	2
2	OBI	3
2.1	OBI	3
2.1.1	Images	3
2.1.2	Bias	3
2.1.3	Parameters	4
2.1.4	Events	4
2.2	Compared Parameters	5
2.3	Aspect	6
2.4	Star Slots	8
2.5	FID Slots	8
A	Summary	9
A.1	Status	9
A.2	Comments	9

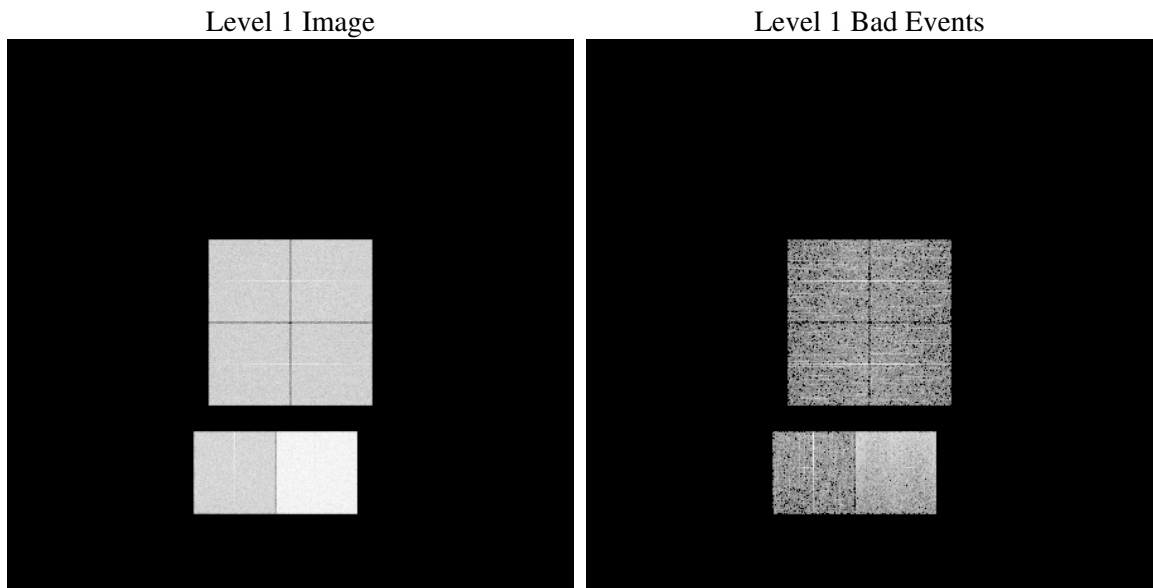
1 Front

seq_num	
obs_id	61615
title	ACIS-012367 diagnostics
observer	CHANDRA engineering request/realtime commanding
object	
dtcycle	0
cycle	P
ra_targ	0.0
dec_targ	0.0
ra_nom	357.97786957207
dec_nom	17.019272702812
roll_nom	105.0365244733
revision	2
ontime	5556.6977532953
livetime	5486.3355005014
ontime0	2212.0054764003
ontime1	2283.3076283187
ontime2	2163.6026605666
ontime3	2166.6794208586
ontime6	2396.7439782172
ontime7	5556.6977532953
l2events	1045966

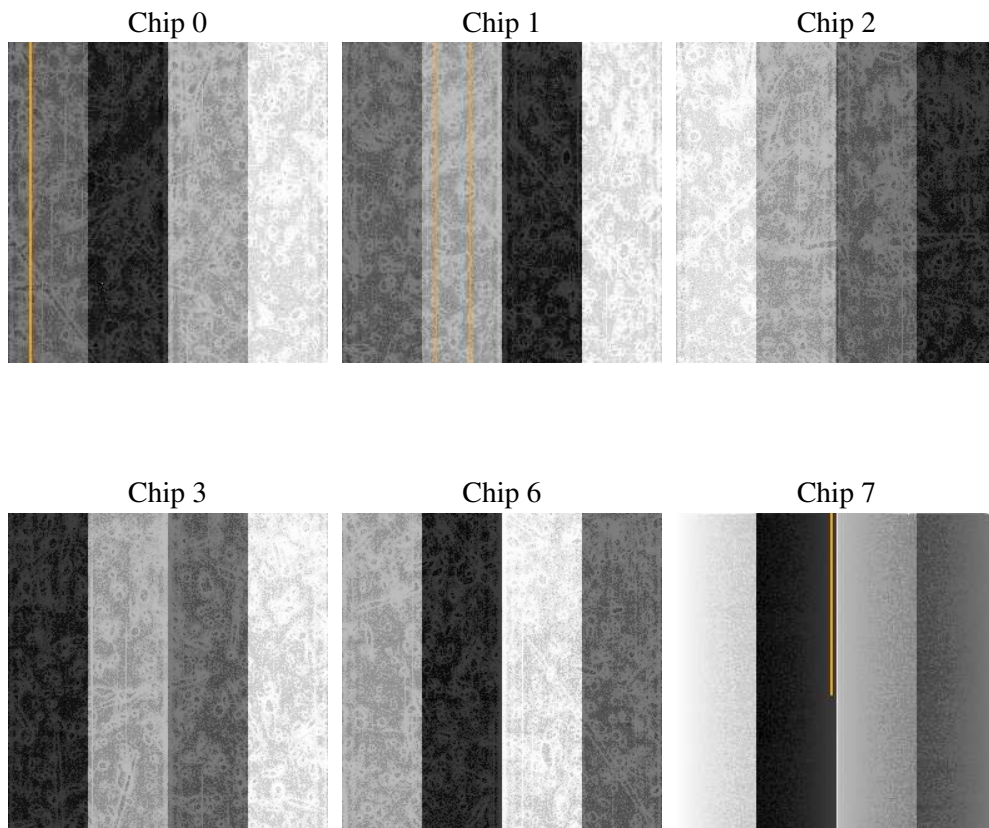
2 OBI

2.1 OBI

2.1.1 Images



2.1.2 Bias



2.1.3 Parameters

obi_num	0
ascdsver	7.6.9
caldsver	3.2.4
date	2006-11-23T07:17:33
revision	2

sched_exp_time	0.0
ontime	5558.3201684654
ontime0	2213.6278915703
ontime1	2284.9300434887
ontime2	2165.0121620148
ontime3	2168.2530823052
ontime6	2398.3663933873
ontime7	5558.3201684654
l1events	1217063

2.1.4 Events

	ccd 0	ccd 1	ccd 2	ccd 3	ccd 6	ccd 7
level 1 events	158997	163768	157702	157789	180536	398271
rejected events	17120	16930	17072	17484	18593	39175
rejected %	10%	10%	10%	11%	10%	9%

	ccd 0	ccd 1	ccd 2	ccd 3	ccd 6	ccd 7
grade 0 events	78199	81135	78080	78121	88571	69791
	49%	49%	49%	49%	49%	17%
grade 1 events	396	449	400	435	446	160
	0%	0%	0%	0%	0%	0%
grade 2 events	25017	25882	24741	24814	28093	105891
	15%	15%	15%	15%	15%	26%
grade 3 events	9122	9459	8917	8914	10043	28079
	5%	5%	5%	5%	5%	7%
grade 4 events	8977	9247	8781	8975	9944	28106
	5%	5%	5%	5%	5%	7%
grade 5 events	1265	1230	1172	1163	1416	5825
	0%	0%	0%	0%	0%	1%
grade 6 events	20562	21115	20111	19481	25292	127229
	12%	12%	12%	12%	14%	31%
grade 7 events	15459	15251	15500	15886	16731	33190
	9%	9%	9%	10%	9%	8%

2.2 Compared Parameters

Parameter	Planned	Actual	Parameter	Planned	Actual
Instrument	ACIS	ACIS	Obspar format version number	6	6
Detector	ACIS-012367	ACIS-012367	Obspar file type	PREDICTED	ACTUAL
Grating	NONE	NONE	Obspar update status	NONE	UPDATED
Data mode	FAINT	FAINT	On-chip summing requested	N	N
Observation mode	SECONDARY	SECONDARY	Subarray requested	NONE	NONE
Pointing RA	0	357.9778695720702	Alternating exposures requested	N	N
Pointing Dec	0	17.01927270281218	Primary exposure time	3.2	3.2
Pointing Roll	0.0	105.0365244733031			
SIM focus pos (mm)	-0.782348	-0.6828225247311905			
SIM defocus (mm)	0	0.8505141146731063			
SIM translation stage pos (mm)	-233.592463	250.466033080201			
SIM translation stage offset (mm)	0	-0.01005468664627074			
Observation start time	107187684.690039	107187683.92157			
Observation start date	2001-05-25T14:21:25	2001-05-25T14:21:23			
Observation end time	107196083.540366	107196082.7719			
Observation end date	2001-05-25T16:41:24	2001-05-25T16:41:22			
Read mode	TIMED	TIMED			

2.3 Aspect

2.4 Star Slots

2.5 FID Slots

A Summary

A.1 Status

V&V Scientist	Jen Lauer
V&V Date (YYYY-MM-DD)	2006.11.24
V&V Edition	1
V&V Disposition and Status	OK
V&V Charge Time	5.55669775

A.2 Comments