

V&V Reference Report

L2 ASCDS Version : 8.4.5

Observation 61585 - L2 Version 3
Chandra X-Ray Center

L2 Processing Date : Sep 18 2012

Contents

1	Front	2
2	OBI	3
2.1	OBI	3
2.1.1	Images	3
2.1.2	Bias	3
2.1.3	Parameters	4
2.1.4	Events	4
2.2	Compared Parameters	5
2.3	Star Slots	6
2.4	FID Slots	6
A	Summary	7
A.1	Status	7
A.2	Comments	7

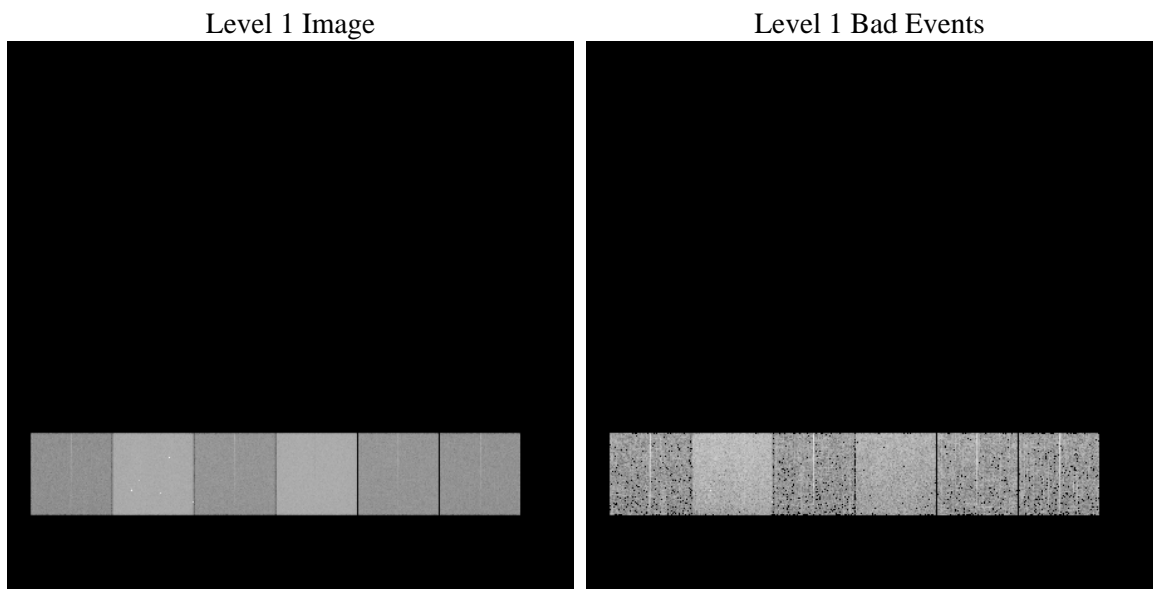
1 Front

seq_num	 	Sequence number
obs_id	61585	Observation id
title	ACIS-456789 diagnostics	Proposal title
observer	CHANDRA engineering request/realtime commanding	Principal investig
object	 	Source name
dtcycle	0	
cycle	P	events from which exps? Prim/Second/Both
ra_targ	0.0	Observer's specified target RA [deg]
dec_targ	0.0	Observer's specified target Dec [deg]
ra_nom	291.98052461778	Nominal RA [deg]
dec_nom	-22.977602661401	Nominal Dec [deg]
roll_nom	96.099655551931	Nominal Roll [deg]
revision	3	Processing version of data
ontime	5501.473911345	Sum of GTIs [s]
livetime	5431.8109360897	Livetime [s]
ontime4	2065.8868727684	Sum of GTIs [s]
ontime5	5854.6985283941	Sum of GTIs [s]
ontime6	2338.1751724035	Sum of GTIs [s]
ontime7	5501.473911345	Sum of GTIs [s]
ontime8	2328.3698927611	Sum of GTIs [s]
ontime9	2221.6208428442	Sum of GTIs [s]
l2events	1223379	Number of level 2 events

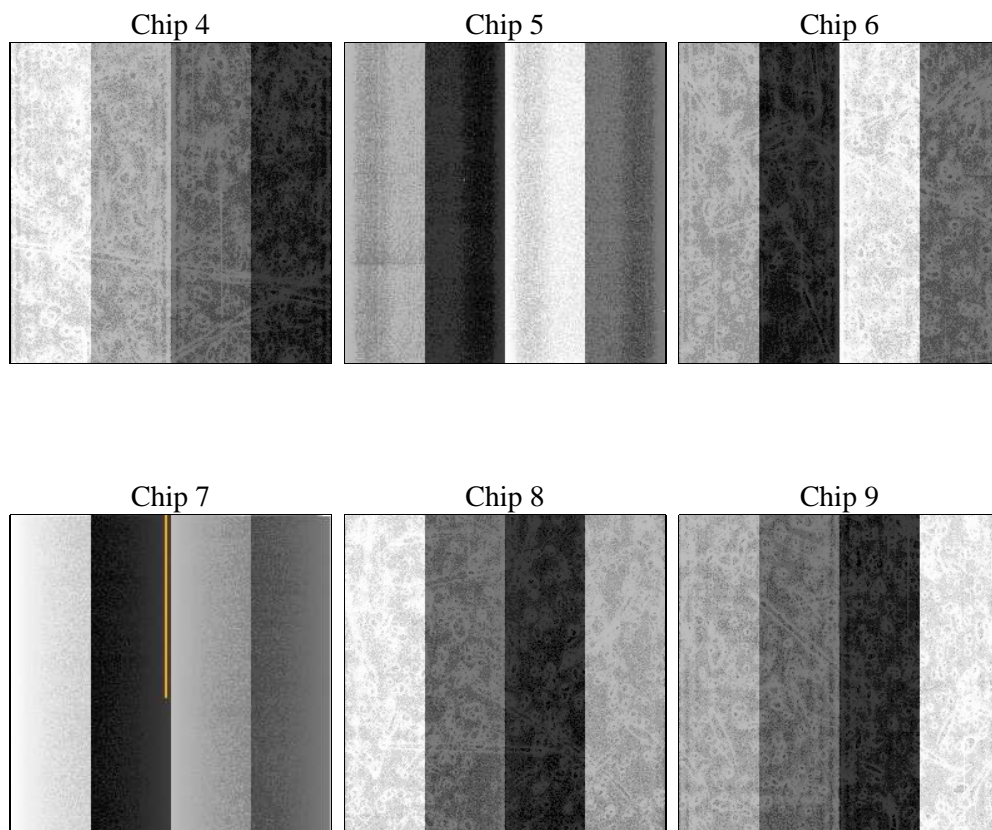
2 OBI

2.1 OBI

2.1.1 Images



2.1.2 Bias



2.1.3 Parameters

obi_num	0	Obi number	sched_exp_time	0.0	[s] Scheduled observation exposure time
ascdsver	8.4.5	Processing system revision	ontime	5501.473911345	Sum of GTIs [s]
caldsver	4.5.1.1	 	ontime4	2065.8868727684	Sum of GTIs [s]
date	2012-09-18T03:32:52	Date and time of file creation	ontime5	5854.6985283941	Sum of GTIs [s]
revision	3	Processing version of data	ontime6	2338.1751724035	Sum of GTIs [s]
			ontime7	5501.473911345	Sum of GTIs [s]
			ontime8	2328.3698927611	Sum of GTIs [s]
			ontime9	2221.6208428442	Sum of GTIs [s]
			l1events	1429885	Number of level 1 events

2.1.4 Events

	ccd 4	ccd 5	ccd 6	ccd 7	ccd 8	ccd 9		ccd 4	ccd 5	ccd 6	ccd 7	ccd 8	ccd 9
level 1 events	145593	382210	174720	391252	175917	160193	grade 0 events	72164	87517	85437	93005	85248	77365
rejected events	18511	42319	18886	29332	21454	19320		49%	22%	48%	23%	48%	48%
rejected %	12%	11%	10%	7%	12%	12%	grade 1 events	412	387	435	240	439	476
								0%	0%	0%	0%	0%	0%
							grade 2 events	22420	119153	26922	80429	27073	24936
								15%	31%	15%	20%	15%	15%
							grade 3 events	7710	22271	9674	37224	9791	8630
								5%	5%	5%	9%	5%	5%
							grade 4 events	7883	22235	9444	36685	9752	8774
								5%	5%	5%	9%	5%	5%
							grade 5 events	1180	8272	1488	6179	1598	1403
								0%	2%	0%	1%	0%	0%
							grade 6 events	17115	88901	24590	114800	22832	21364
								11%	23%	14%	29%	12%	13%
							grade 7 events	16709	33474	16730	22690	19184	17245
								11%	8%	9%	5%	10%	10%

2.2 Compared Parameters

Parameter	Planned	Actual	Parameter	Planned	Actual
Instrument	ACIS	ACIS	Obspar format version number	7	7
Detector	ACIS-456789	ACIS-456789	Obspar file type	PREDICTED	ACTUAL
Grating	NONE	NONE	Obspar update status	NONE	UPDATED
Data mode	FAINT	FAINT	On-chip summing requested	N	N
Observation mode	SECONDARY	SECONDARY	Subarray requested	NONE	NONE
[deg] Pointing RA	0	291.9805246177824	Alternating exposures requested	N	N
[deg] Pointing Dec	0	-22.97760266140138	[s] Primary exposure time	0.000000	3.2
[deg] Pointing Roll	0.0	96.09965555193101			
[mm] SIM focus pos	-0.684267	-0.7809083437167272			
[mm] SIM defocus	0	0.7524282956875696			
[mm] SIM translation stage pos	-190.132523	250.466033080201			
[mm] SIM translation stage offset	0	-0.01005468664627074			
[s] Observation start time (MET)	109194593.768	109194592.99976			
Observation start date	2001-06-17T19:49:54	2001-06-17T19:49:52			
[s] Observation end time (MET)	109204446.069	109204445.30015			
Observation end date	2001-06-17T22:34:06	2001-06-17T22:34:05			
Read mode	TIMED	TIMED			

2.3 Star Slots

2.4 FID Slots

A Summary

A.1 Status

V&V Scientist	Beth Sundheim
V&V Date (YYYY-MM-DD)	2012.09.20
V&V Edition	1
V&V Disposition and Status	OK
V&V Charge Time	5.501473911345

A.2 Comments