

V&V Reference Report

L2 ASCDS Version : 7.6.9

Observation 61585 - L2 Version 001
Chandra X-Ray Center

L2 Processing Date : Dec 8 2006

Contents

1	Front	2
2	OBI	3
2.1	OBI	3
2.1.1	Images	3
2.1.2	Bias	3
2.1.3	Parameters	4
2.1.4	Events	4
2.2	Compared Parameters	5
2.3	Aspect	6
2.4	Star Slots	8
2.5	FID Slots	8
A	Summary	9
A.1	Status	9
A.2	Comments	9

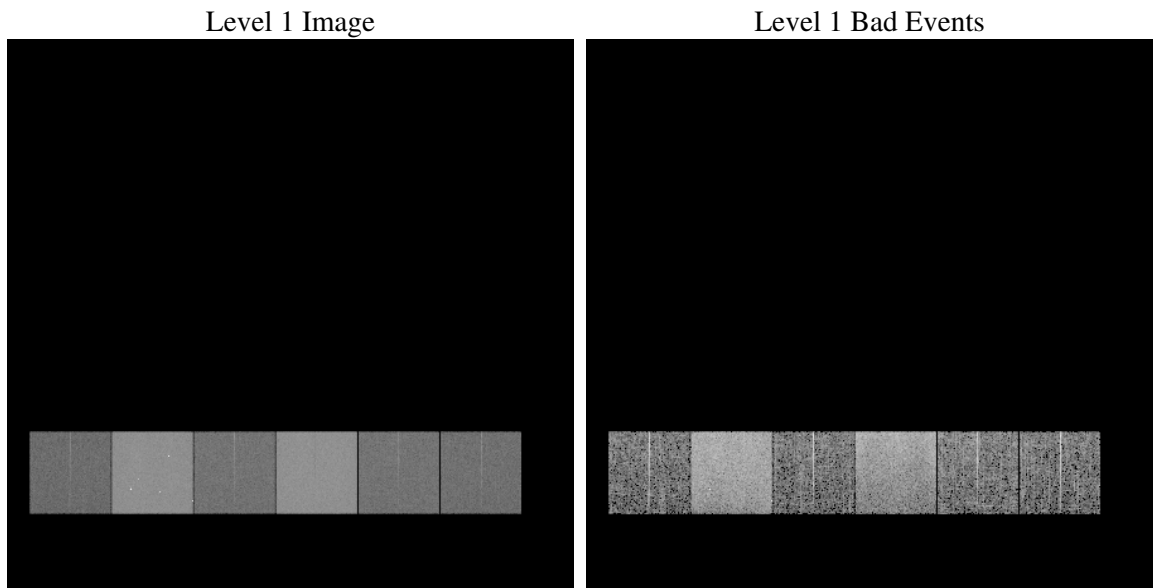
1 Front

seq_num	
obs_id	61585
title	ACIS-456789 diagnostics
observer	CHANDRA engineering request/realtime commanding
object	
dtcycle	0
cycle	P
ra_targ	0.0
dec_targ	0.0
ra_nom	291.9805246193
dec_nom	-22.977602672241
roll_nom	96.09965555034
revision	2
ontime	5502.972319901
livetime	5433.2903708943
ontime4	2067.4868727773
ontime5	5856.2379769534
ontime6	2339.7556609511
ontime7	5502.972319901
ontime8	2329.9698927701
ontime9	2223.0782113969
l2events	1204474

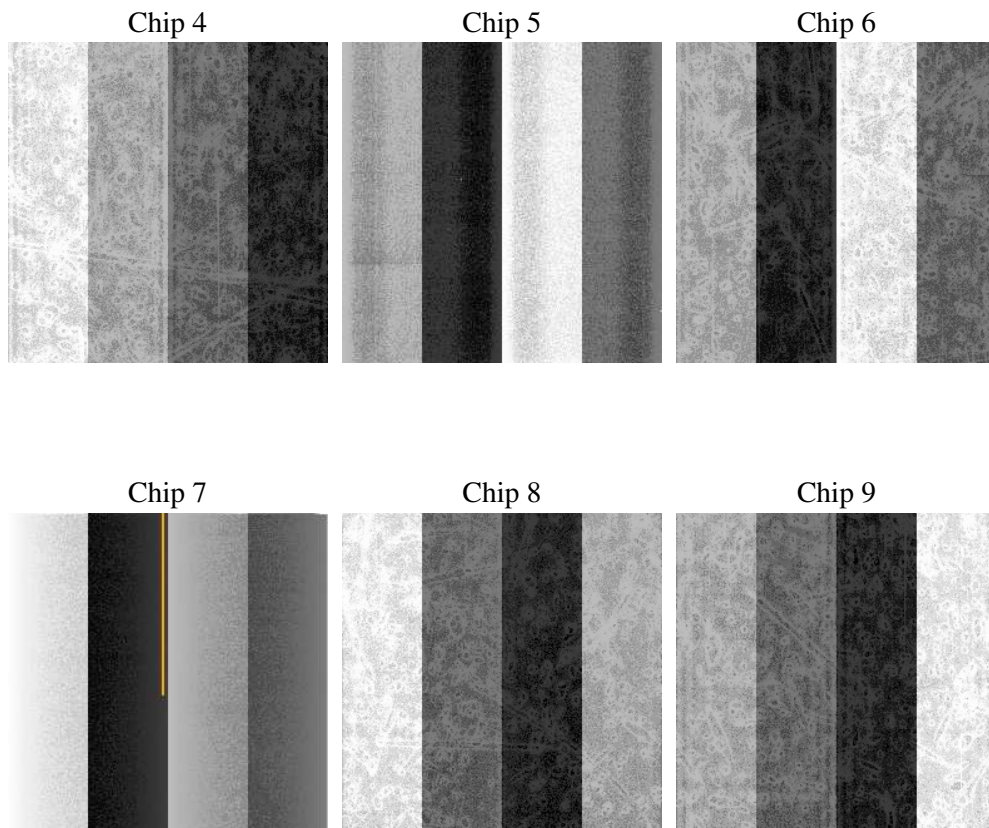
2 OBI

2.1 OBI

2.1.1 Images



2.1.2 Bias



2.1.3 Parameters

obi_num	0
ascdsver	7.6.9
caldbver	3.2.4
date	2006-12-08T16:07:59
revision	2

sched_exp_time	0.0
ontime	5503.2457094043
ontime4	2067.7817908227
ontime5	5856.5113664567
ontime6	2340.0290504545
ontime7	5503.2457094043
ontime8	2330.3058508188
ontime9	2223.3516009003
l1events	1429885

2.1.4 Events

	ccd 4	ccd 5	ccd 6	ccd 7	ccd 8	ccd 9
level 1 events	145593	382210	174720	391252	175917	160193
rejected events	18302	51563	18654	40097	21221	19126
rejected %	12%	13%	10%	10%	12%	11%

	ccd 4	ccd 5	ccd 6	ccd 7	ccd 8	ccd 9
grade 0 events	72157	45638	85431	68005	85241	77362
	49%	11%	48%	17%	48%	48%
grade 1 events	412	256	435	156	438	476
	0%	0%	0%	0%	0%	0%
grade 2 events	22427	156971	26928	103473	27080	24939
	15%	41%	15%	26%	15%	15%
grade 3 events	7709	11998	9673	27466	9789	8628
	5%	3%	5%	7%	5%	5%
grade 4 events	7883	11796	9442	26866	9749	8772
	5%	3%	5%	6%	5%	5%
grade 5 events	1180	6315	1488	5917	1598	1403
	0%	1%	0%	1%	0%	0%
grade 6 events	17115	104244	24592	125345	22837	21366
	11%	27%	14%	32%	12%	13%
grade 7 events	16710	44992	16731	34024	19185	17247
	11%	11%	9%	8%	10%	10%

2.2 Compared Parameters

Parameter	Planned	Actual	Parameter	Planned	Actual
Instrument	ACIS	ACIS	Obspar format version number	6	6
Detector	ACIS-456789	ACIS-456789	Obspar file type	PREDICTED	ACTUAL
Grating	NONE	NONE	Obspar update status	NONE	UPDATED
Data mode	FAINT	FAINT	On-chip summing requested	N	N
Observation mode	SECONDARY	SECONDARY	Subarray requested	NONE	NONE
Pointing RA	0	291.9805246192979	Alternating exposures requested	N	N
Pointing Dec	0	-22.97760267224099	Primary exposure time	0.000000	3.2
Pointing Roll	0.0	96.09965555033986			
SIM focus pos (mm)	-0.684267	-0.7809083437167272			
SIM defocus (mm)	0	0.7524282956875696			
SIM translation stage pos (mm)	-190.132523	250.466033080201			
SIM translation stage offset (mm)	0	-0.01005468664627074			
Observation start time	109194593.768	109194592.99976			
Observation start date	2001-06-17T19:49:54	2001-06-17T19:49:52			
Observation end time	109204446.069	109204445.30015			
Observation end date	2001-06-17T22:34:06	2001-06-17T22:34:05			
Read mode	TIMED	TIMED			

2.3 Aspect

2.4 Star Slots

2.5 FID Slots

A Summary

A.1 Status

V&V Scientist	Beth Sundheim
V&V Date (YYYY-MM-DD)	2006.12.08
V&V Edition	1
V&V Disposition and Status	OK
V&V Charge Time	5.50297231

A.2 Comments