

V&V Reference Report

L2 ASCDS Version : 7.6.9

Observation 61555 - L2 Version 001
Chandra X-Ray Center

L2 Processing Date : Dec 11 2006

Contents

1	Front	2
2	OBI	3
2.1	OBI	3
2.1.1	Images	3
2.1.2	Bias	3
2.1.3	Parameters	4
2.1.4	Events	4
2.2	Compared Parameters	5
2.3	Aspect	6
2.4	Star Slots	8
2.5	FID Slots	8
A	Summary	9
A.1	Status	9
A.2	Comments	9

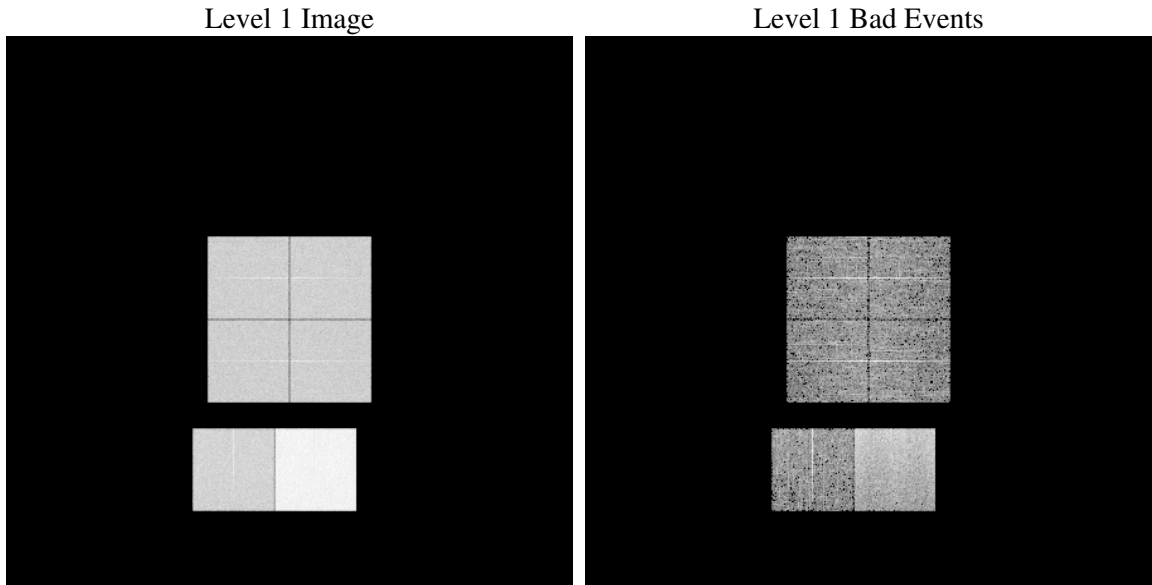
1 Front

seq_num	
obs_id	61555
title	ACIS-012367 diagnostics
observer	CHANDRA engineering request/realtime commanding
object	
dtcycle	0
cycle	P
ra_targ	0.0
dec_targ	0.0
ra_nom	359.97501352006
dec_nom	11.0148723737
roll_nom	116.09410081363
revision	2
ontime	6728.0596655756
livetime	6642.8649229389
ontime0	2670.9175977856
ontime1	2693.0360324383
ontime2	2556.9130705893
ontime3	2567.1222978383
ontime6	2829.1595428139
ontime7	6728.0596655756
l2events	1218561

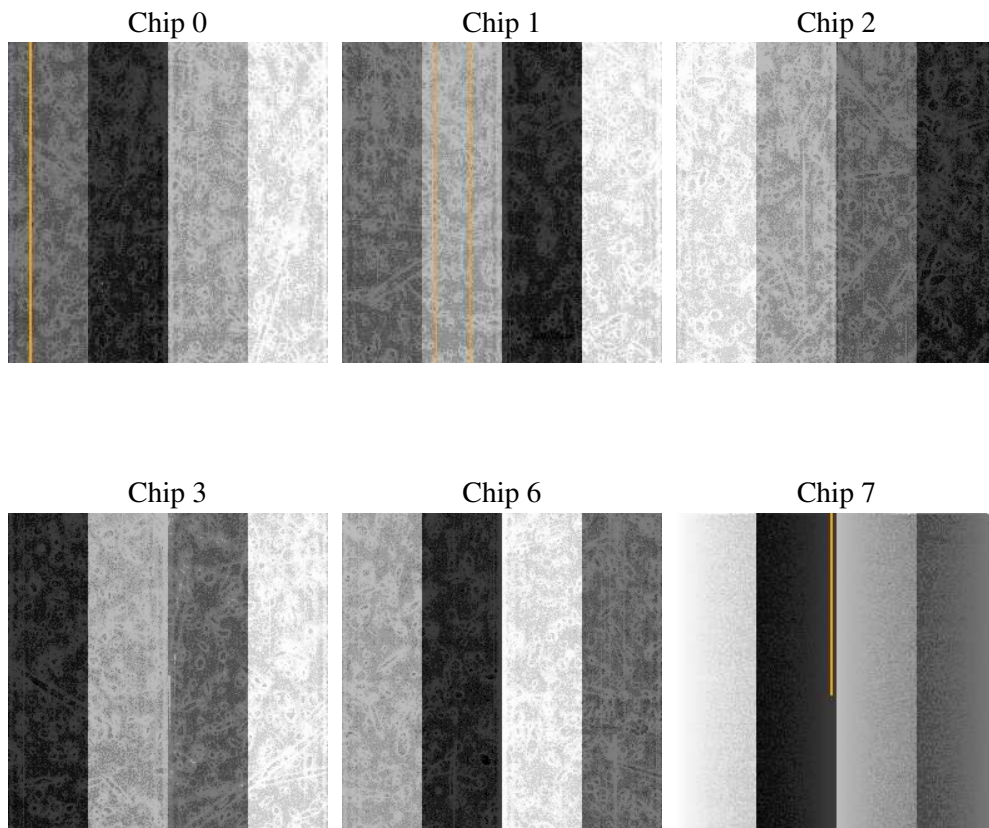
2 OBI

2.1 OBI

2.1.1 Images



2.1.2 Bias



2.1.3 Parameters

obi_num	0
ascdsver	7.6.9
caldbver	3.2.4
date	2006-12-12T03:13:38
revision	2

sched_exp_time	0.0
ontime	6731.5657961071
ontime0	2673.8550823778
ontime1	2696.5421629697
ontime2	2560.4192011207
ontime3	2570.1418624371
ontime6	2832.6656733453
ontime7	6731.5657961071
l1events	1426259

2.1.4 Events

	ccd 0	ccd 1	ccd 2	ccd 3	ccd 6	ccd 7
level 1 events	186861	189142	183489	183888	209343	473536
rejected events	20751	20807	21135	21221	22610	49836
rejected %	11%	11%	11%	11%	10%	10%

	ccd 0	ccd 1	ccd 2	ccd 3	ccd 6	ccd 7
grade 0 events	91595	92942	90360	90949	101641	81397
	49%	49%	49%	49%	48%	17%
grade 1 events	477	491	475	492	513	192
	0%	0%	0%	0%	0%	0%
grade 2 events	29400	29661	28608	28522	32321	125507
	15%	15%	15%	15%	15%	26%
grade 3 events	10478	10659	10151	10331	11492	32475
	5%	5%	5%	5%	5%	6%
grade 4 events	10554	10546	10185	10413	11445	32034
	5%	5%	5%	5%	5%	6%
grade 5 events	1397	1464	1496	1442	1788	7129
	0%	0%	0%	0%	0%	1%
grade 6 events	24294	24738	23262	22744	30078	152493
	13%	13%	12%	12%	14%	32%
grade 7 events	18666	18641	18952	18995	20065	42309
	9%	9%	10%	10%	9%	8%

2.2 Compared Parameters

Parameter	Planned	Actual	Parameter	Planned	Actual
Instrument	ACIS	ACIS	Obspar format version number	6	6
Detector	ACIS-012367	ACIS-012367	Obspar file type	PREDICTED	ACTUAL
Grating	NONE	NONE	Obspar update status	NONE	UPDATED
Data mode	FAINT	FAINT	On-chip summing requested	N	N
Observation mode	SECONDARY	SECONDARY	Subarray requested	NONE	NONE
Pointing RA	0	359.975013520064	Alternating exposures requested	N	N
Pointing Dec	0	11.01487237370032	Primary exposure time	0.000000	3.2
Pointing Roll	0.0	116.0941008136253			
SIM focus pos (mm)	-0.782348	-1.038866356238299			
SIM defocus (mm)	0	0.4944702831659975			
SIM translation stage pos (mm)	-233.592463	250.466033080201			
SIM translation stage offset (mm)	0	-0.01005468664627074			
Observation start time	111020731.79	111020731.02106			
Observation start date	2001-07-08T23:05:32	2001-07-08T23:05:31			
Observation end time	111032183.09	111032182.32151			
Observation end date	2001-07-09T02:16:23	2001-07-09T02:16:22			
Read mode	TIMED	TIMED			

2.3 Aspect

2.4 Star Slots

2.5 FID Slots

A Summary

A.1 Status

V&V Scientist	Jen Lauer
V&V Date (YYYY-MM-DD)	2006.12.12
V&V Edition	1
V&V Disposition and Status	OK
V&V Charge Time	6.72805966

A.2 Comments