

V&V Reference Report

L2 ASCDS Version : 7.6.10

Observation 61385 - L2 Version 001
Chandra X-Ray Center

L2 Processing Date : Jan 18 2007

Contents

1	Front	2
2	OBI	3
2.1	OBI	3
2.1.1	Images	3
2.1.2	Bias	3
2.1.3	Parameters	4
2.1.4	Events	4
2.2	Compared Parameters	5
2.3	Star Slots	6
2.4	FID Slots	6
A	Summary	7
A.1	Status	7
A.2	Comments	7

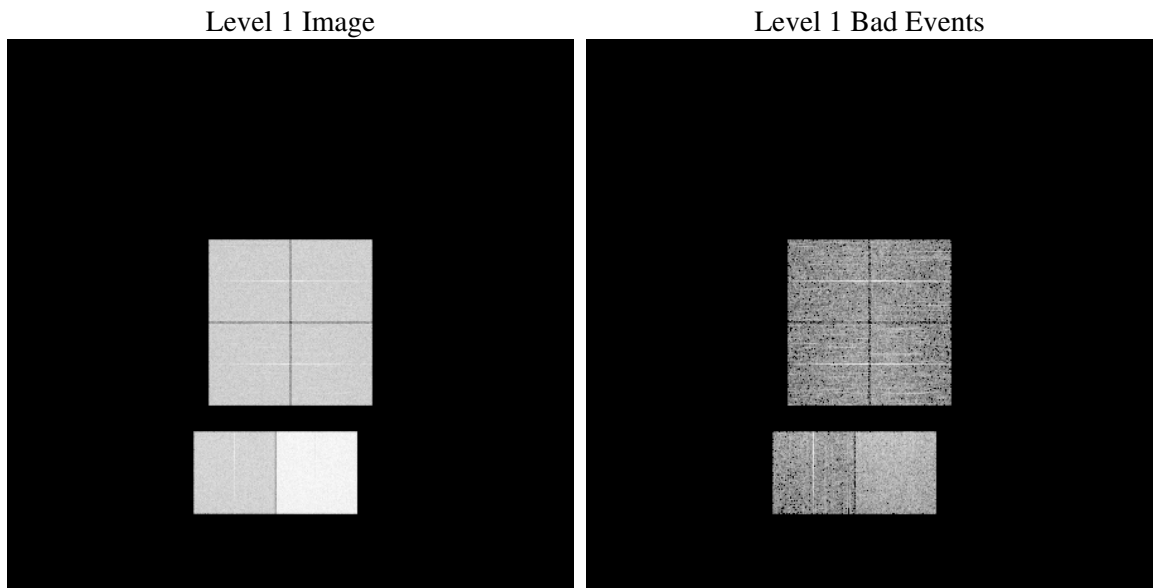
1 Front

seq_num	
obs_id	61385
title	ACIS-012367 diagnostics
observer	CHANDRA engineering request/realtime commanding
object	
dtcycle	0
cycle	P
ra_targ	0.0
dec_targ	0.0
ra_nom	142.96484820069
dec_nom	56.020825752654
roll_nom	100.56376161672
revision	2
ontime	7570.5036925524
livetime	7474.6414163873
ontime0	2868.1295440495
ontime1	2945.6302971542
ontime2	2806.6323327422
ontime3	2838.8784033358
ontime6	3081.7536379099
ontime7	7570.5036925524
l2events	1215394

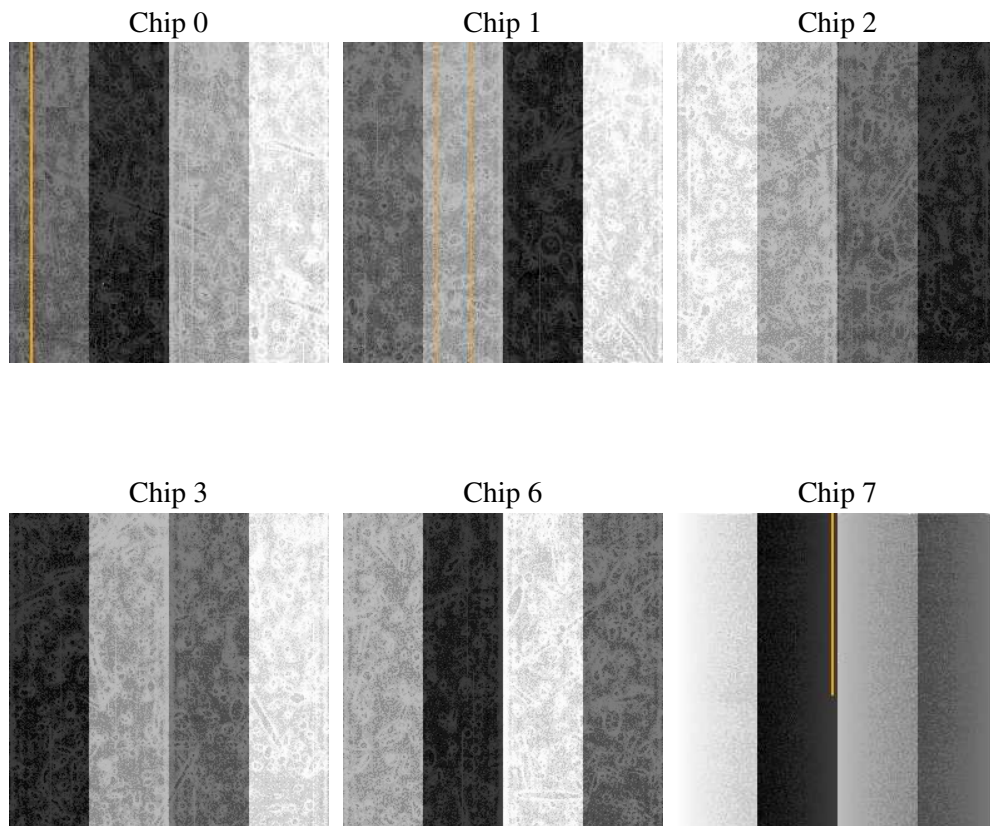
2 OBI

2.1 OBI

2.1.1 Images



2.1.2 Bias



2.1.3 Parameters

obi_num	0
ascdsver	7.6.10
caldsver	3.3.0
date	2007-01-18T10:00:55
revision	2

sched_exp_time	0.0
ontime	7570.5036925524
ontime0	2868.1295440495
ontime1	2945.6302971542
ontime2	2806.6323327422
ontime3	2838.8784033358
ontime6	3081.7536379099
ontime7	7570.5036925524
l1events	1420594

2.1.4 Events

	ccd 0	ccd 1	ccd 2	ccd 3	ccd 6	ccd 7
level 1 events	181189	186131	181083	183713	204949	483529
rejected events	21464	21989	22360	23742	23712	41539
rejected %	11%	11%	12%	12%	11%	8%

	ccd 0	ccd 1	ccd 2	ccd 3	ccd 6	ccd 7
grade 0 events	88254	90392	88314	89620	98760	112012
	48%	48%	48%	48%	48%	23%
grade 1 events	471	501	489	461	522	301
	0%	0%	0%	0%	0%	0%
grade 2 events	28054	29083	27912	28008	31521	97465
	15%	15%	15%	15%	15%	20%
grade 3 events	10076	10441	9875	10110	11237	45004
	5%	5%	5%	5%	5%	9%
grade 4 events	9991	10384	10117	10131	11169	44847
	5%	5%	5%	5%	5%	9%
grade 5 events	1562	1630	1444	1562	1755	8584
	0%	0%	0%	0%	0%	1%
grade 6 events	23350	23842	22505	22102	28550	142662
	12%	12%	12%	12%	13%	29%
grade 7 events	19431	19858	20427	21719	21435	32654
	10%	10%	11%	11%	10%	6%

2.2 Compared Parameters

Parameter	Planned	Actual	Parameter	Planned	Actual
Instrument	ACIS	ACIS	Obspar format version number	6	6
Detector	ACIS-012367	ACIS-012367	Obspar file type	PREDICTED	ACTUAL
Grating	NONE	NONE	Obspar update status	NONE	UPDATED
Data mode	FAINT	FAINT	On-chip summing requested	N	N
Observation mode	SECONDARY	SECONDARY	Subarray requested	NONE	NONE
Pointing RA	0	142.9648482006904	Alternating exposures requested	N	N
Pointing Dec	0	56.02082575265443	Primary exposure time	0.000000	3.2
Pointing Roll	0.0	100.5637616167237			
SIM focus pos (mm)	-0.782348	-0.6828225247311905			
SIM defocus (mm)	0	0.8505141146731063			
SIM translation stage pos (mm)	-233.592463	250.466033080201			
SIM translation stage offset (mm)	0	-0.01005468664627074			
Observation start time	124729162.283	124729161.51414			
Observation start date	2001-12-14T14:59:22	2001-12-14T14:59:21			
Observation end time	124766673.184	124766672.41565			
Observation end date	2001-12-15T01:24:33	2001-12-15T01:24:32			
Read mode	TIMED	TIMED			

2.3 Star Slots

2.4 FID Slots

A Summary

A.1 Status

V&V Scientist	Jen Lauer
V&V Date (YYYY-MM-DD)	2007.01.18
V&V Edition	1
V&V Disposition and Status	OK
V&V Charge Time	7.57050369

A.2 Comments