

V&V Reference Report

L2 ASCDS Version : 8.4.5

Observation 61375 - L2 Version 3
Chandra X-Ray Center

L2 Processing Date : Sep 29 2012

Contents

1	Front	2
2	OBI	3
2.1	OBI	3
2.1.1	Images	3
2.1.2	Bias	3
2.1.3	Parameters	4
2.1.4	Events	4
2.2	Compared Parameters	5
2.3	Star Slots	6
2.4	FID Slots	6
A	Summary	7
A.1	Status	7
A.2	Comments	7

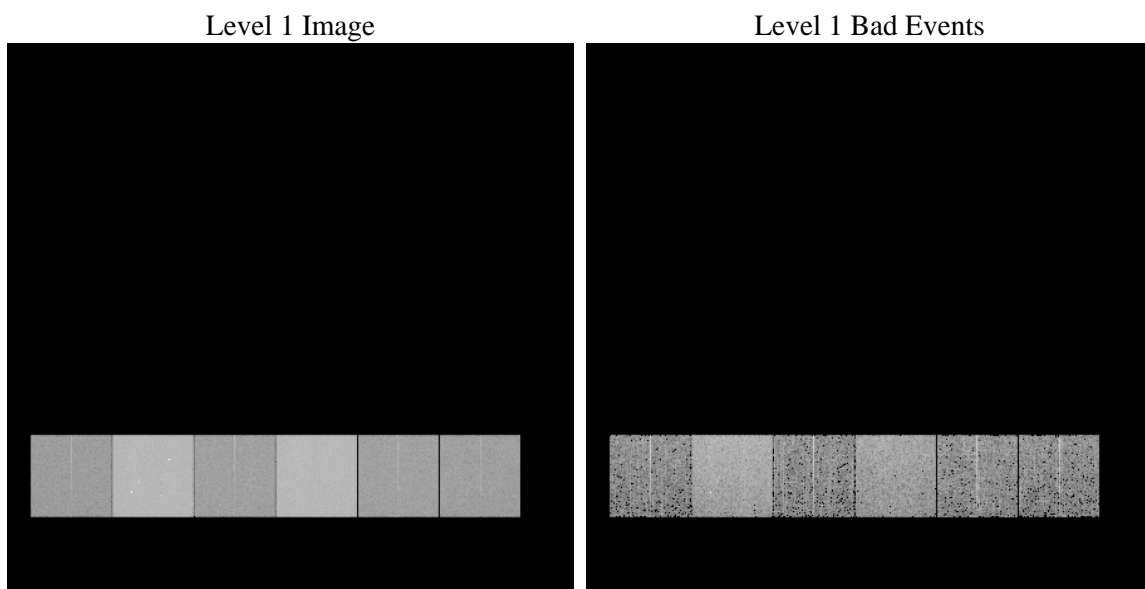
1 Front

seq_num	 	Sequence number
obs_id	61375	Observation id
title	ACIS-456789 diagnostics	Proposal title
observer	CHANDRA engineering request/realtime commanding	Principal investig
object	 	Source name
dtcycle	0	
cycle	P	events from which exps? Prim/Second/Both
ra_targ	0.0	Observer's specified target RA [deg]
dec_targ	0.0	Observer's specified target Dec [deg]
ra_nom	95.021148967267	Nominal RA [deg]
dec_nom	0.01905841938455	Nominal Dec [deg]
roll_nom	9.6776348846831	Nominal Roll [deg]
revision	3	Processing version of data
ontime	6167.6503148973	Sum of GTIs [s]
livetime	6089.5518128969	Livetime [s]
ontime4	2333.5468322039	Sum of GTIs [s]
ontime5	6629.6782857776	Sum of GTIs [s]
ontime6	2524.7680722028	Sum of GTIs [s]
ontime7	6167.6503148973	Sum of GTIs [s]
ontime8	2576.6245625764	Sum of GTIs [s]
ontime9	2450.2242619693	Sum of GTIs [s]
l2events	1210402	Number of level 2 events

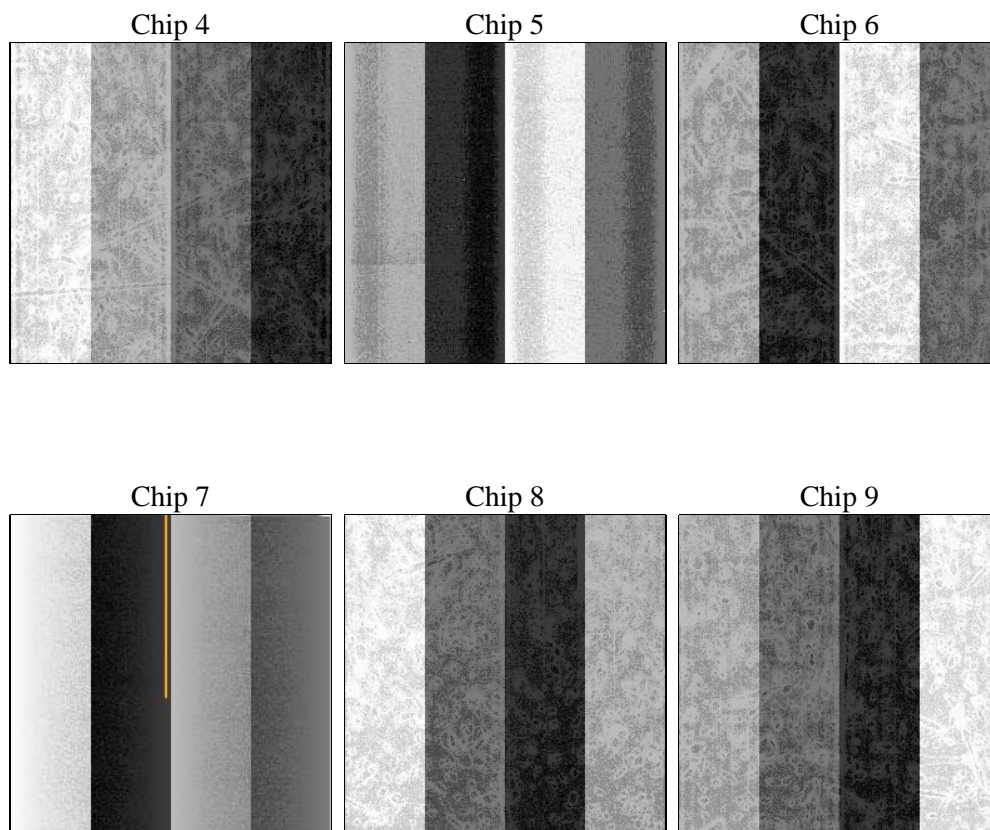
2 OBI

2.1 OBI

2.1.1 Images



2.1.2 Bias



2.1.3 Parameters

obi_num	0	Obi number	sched_exp_time	0.0	[s] Scheduled observation exposure time
ascdsver	8.4.5	Processing system revision	ontime	6167.6503148973	Sum of GTIs [s]
caldbver	4.5.2	 	ontime4	2333.5468322039	Sum of GTIs [s]
date	2012-09-29T14:34:52	Date and time of file creation	ontime5	6629.6782857776	Sum of GTIs [s]
revision	3	Processing version of data	ontime6	2524.7680722028	Sum of GTIs [s]
			ontime7	6167.6503148973	Sum of GTIs [s]
			ontime8	2576.6245625764	Sum of GTIs [s]
			ontime9	2450.2242619693	Sum of GTIs [s]
			l1events	1423438	Number of level 1 events

2.1.4 Events

	ccd 4	ccd 5	ccd 6	ccd 7	ccd 8	ccd 9		ccd 4	ccd 5	ccd 6	ccd 7	ccd 8	ccd 9
level 1 events	146301	386802	168323	392306	172523	157183	grade 0 events	71792	87875	80684	91662	83156	76091
rejected events	19268	46005	20192	33355	21497	18926		49%	22%	47%	23%	48%	48%
rejected %	13%	11%	11%	8%	12%	12%	grade 1 events	386	492	393	223	421	389
								0%	0%	0%	0%	0%	0%
							grade 2 events	22438	117029	25797	79584	26621	24521
								15%	30%	15%	20%	15%	15%
							grade 3 events	7975	22989	9234	36357	9549	8504
								5%	5%	5%	9%	5%	5%
							grade 4 events	7806	22652	9191	36591	9378	8529
								5%	5%	5%	9%	5%	5%
							grade 5 events	1228	8502	1493	6855	1666	1409
								0%	2%	0%	1%	0%	0%
							grade 6 events	17022	90252	23225	114757	22322	20612
								11%	23%	13%	29%	12%	13%
							grade 7 events	17654	37011	18306	26277	19410	17128
								12%	9%	10%	6%	11%	10%

2.2 Compared Parameters

Parameter	Planned	Actual	Parameter	Planned	Actual
Instrument	ACIS	ACIS	Obspar format version number	7	7
Detector	ACIS-456789	ACIS-456789	Obspar file type	PREDICTED	ACTUAL
Grating	NONE	NONE	Obspar update status	NONE	UPDATED
Data mode	FAINT	FAINT	On-chip summing requested	N	N
Observation mode	SECONDARY	SECONDARY	Subarray requested	NONE	NONE
[deg] Pointing RA	0	95.02114896726661	Alternating exposures requested	N	N
[deg] Pointing Dec	0	0.0190584193845502	[s] Primary exposure time	0.000000	3.2
[deg] Pointing Roll	0.0	9.677634884683144			
[mm] SIM focus pos	-0.684267	-0.6828225247311905			
[mm] SIM defocus	0	0.8505141146731063			
[mm] SIM translation stage pos	-190.132523	250.466033080201			
[mm] SIM translation stage offset	0	-0.01005468664627074			
[s] Observation start time (MET)	125414497.81	125414497.0416			
Observation start date	2001-12-22T13:21:38	2001-12-22T13:21:37			
[s] Observation end time (MET)	125427287.761	125427286.99211			
Observation end date	2001-12-22T16:54:48	2001-12-22T16:54:46			
Read mode	TIMED	TIMED			

2.3 Star Slots

2.4 FID Slots

A Summary

A.1 Status

V&V Scientist	Jen Lauer
V&V Date (YYYY-MM-DD)	2012.10.01
V&V Edition	1
V&V Disposition and Status	OK
V&V Charge Time	6.1676503148973

A.2 Comments