

V&V Reference Report

L2 ASCDS Version : 7.6.10

Observation 61375 - L2 Version 001
Chandra X-Ray Center

L2 Processing Date : Jan 18 2007

Contents

1	Front	2
2	OBI	3
2.1	OBI	3
2.1.1	Images	3
2.1.2	Bias	3
2.1.3	Parameters	4
2.1.4	Events	4
2.2	Compared Parameters	5
2.3	Star Slots	6
2.4	FID Slots	6
A	Summary	7
A.1	Status	7
A.2	Comments	7

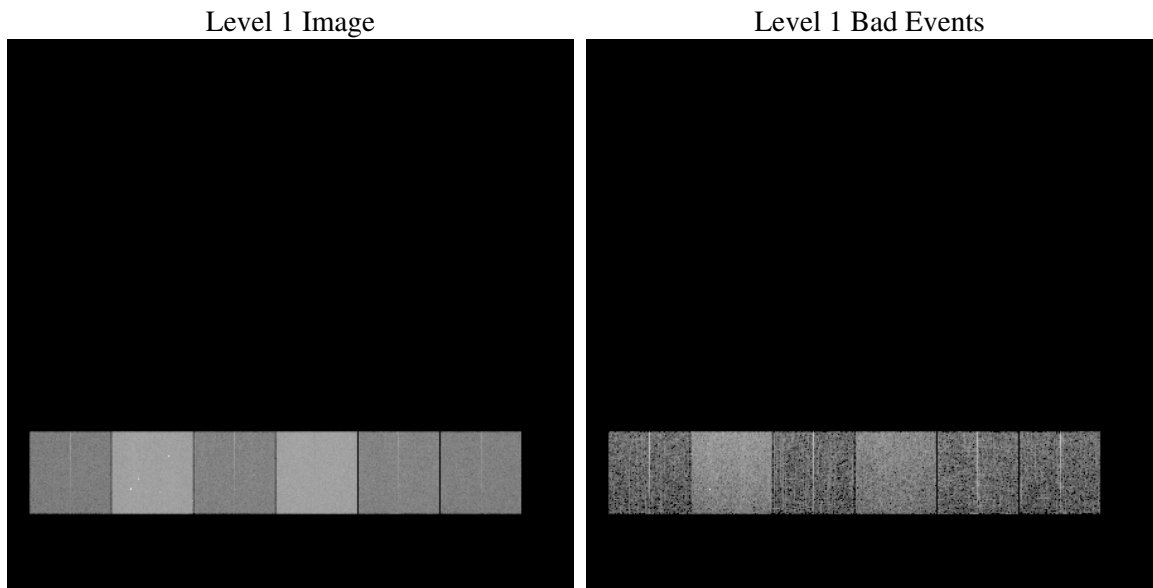
1 Front

seq_num	
obs_id	61375
title	ACIS-456789 diagnostics
observer	CHANDRA engineering request/realtime commanding
object	
dtcycle	0
cycle	P
ra_targ	0.0
dec_targ	0.0
ra_nom	95.021148967659
dec_nom	0.019058443624834
roll_nom	9.6776348560607
revision	2
ontime	6166.9937639087
livetime	6088.9035755523
ontime4	2333.0134012103
ontime5	6630.4937921315
ontime6	2524.1936012059
ontime7	6166.9937639087
ontime8	2576.1321715862
ontime9	2449.5266709775
l2events	1210582

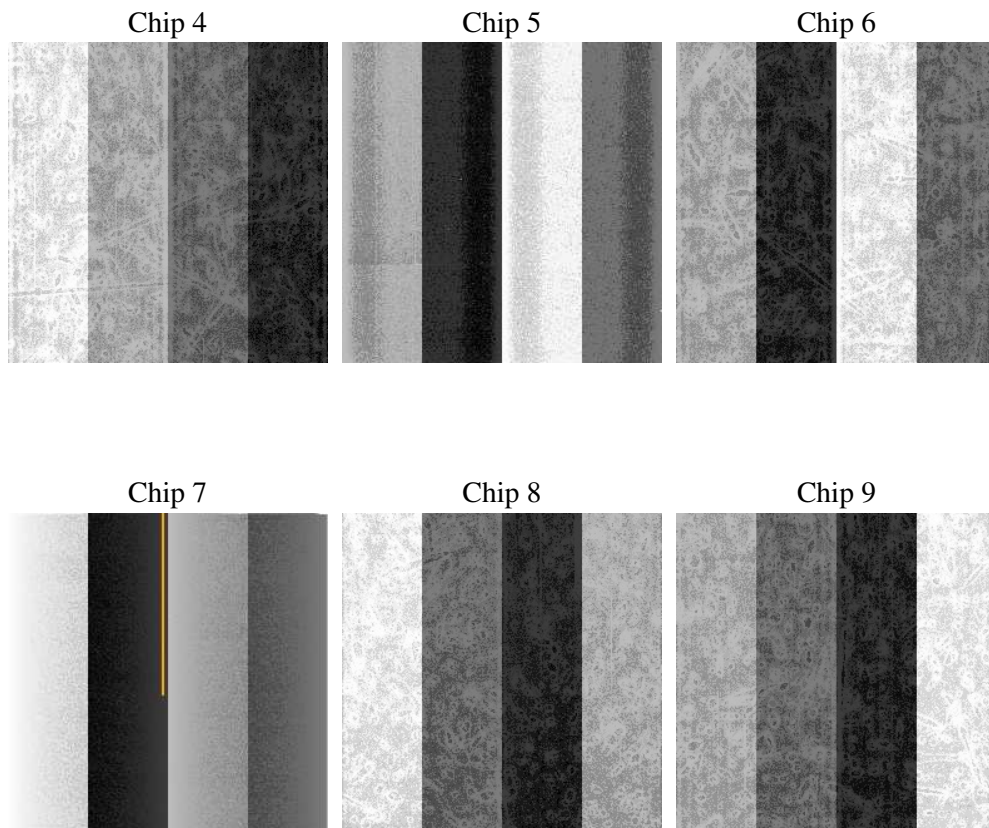
2 OBI

2.1 OBI

2.1.1 Images



2.1.2 Bias



2.1.3 Parameters

obi_num	0
ascdsver	7.6.10
caldsver	3.3.0
date	2007-01-18T11:01:41
revision	2

sched_exp_time	0.0
ontime	6166.9937639087
ontime4	2333.0134012103
ontime5	6630.4937921315
ontime6	2524.1936012059
ontime7	6166.9937639087
ontime8	2576.1321715862
ontime9	2449.5266709775
l1events	1423438

2.1.4 Events

	ccd 4	ccd 5	ccd 6	ccd 7	ccd 8	ccd 9
level 1 events	146301	386802	168323	392306	172523	157183
rejected events	19268	45997	20194	33351	21497	18925
rejected %	13%	11%	11%	8%	12%	12%

	ccd 4	ccd 5	ccd 6	ccd 7	ccd 8	ccd 9
grade 0 events	71793	87911	80683	91668	83156	76090
	49%	22%	47%	23%	48%	48%
grade 1 events	386	492	393	223	421	389
	0%	0%	0%	0%	0%	0%
grade 2 events	22437	116993	25798	79577	26621	24522
	15%	30%	15%	20%	15%	15%
grade 3 events	7974	22992	9234	36359	9549	8504
	5%	5%	5%	9%	5%	5%
grade 4 events	7805	22658	9190	36594	9377	8528
	5%	5%	5%	9%	5%	5%
grade 5 events	1227	8505	1493	6855	1666	1408
	0%	2%	0%	1%	0%	0%
grade 6 events	17024	90251	23224	114757	22323	20614
	11%	23%	13%	29%	12%	13%
grade 7 events	17655	37000	18308	26273	19410	17128
	12%	9%	10%	6%	11%	10%

2.2 Compared Parameters

Parameter	Planned	Actual	Parameter	Planned	Actual
Instrument	ACIS	ACIS	Obspar format version number	6	6
Detector	ACIS-456789	ACIS-456789	Obspar file type	PREDICTED	ACTUAL
Grating	NONE	NONE	Obspar update status	NONE	UPDATED
Data mode	FAINT	FAINT	On-chip summing requested	N	N
Observation mode	SECONDARY	SECONDARY	Subarray requested	NONE	NONE
Pointing RA	0	95.02114896765853	Alternating exposures requested	N	N
Pointing Dec	0	0.01905844362483439	Primary exposure time	0.000000	3.2
Pointing Roll	0.0	9.677634856060735			
SIM focus pos (mm)	-0.684267	-0.6828225247311905			
SIM defocus (mm)	0	0.8505141146731063			
SIM translation stage pos (mm)	-190.132523	250.466033080201			
SIM translation stage offset (mm)	0	-0.01005468664627074			
Observation start time	125414497.81	125414497.0416			
Observation start date	2001-12-22T13:21:38	2001-12-22T13:21:37			
Observation end time	125427287.761	125427286.99211			
Observation end date	2001-12-22T16:54:48	2001-12-22T16:54:46			
Read mode	TIMED	TIMED			

2.3 Star Slots

2.4 FID Slots

A Summary

A.1 Status

V&V Scientist	Jen Lauer
V&V Date (YYYY-MM-DD)	2007.01.18
V&V Edition	1
V&V Disposition and Status	OK
V&V Charge Time	6.16699376

A.2 Comments