

V&V Reference Report

L2 ASCDS Version : 7.6.8.1

Observation 61345 - L2 Version 001
Chandra X-Ray Center

L2 Processing Date : Aug 28 2006

Contents

1	Front	2
2	OBI	3
2.1	OBI	3
2.1.1	Images	3
2.1.2	Bias	3
2.1.3	Parameters	4
2.1.4	Events	4
2.2	Compared Parameters	5
2.3	Aspect	6
2.4	Star Slots	8
2.5	FID Slots	8
A	Summary	9
A.1	Status	9
A.2	Comments	9

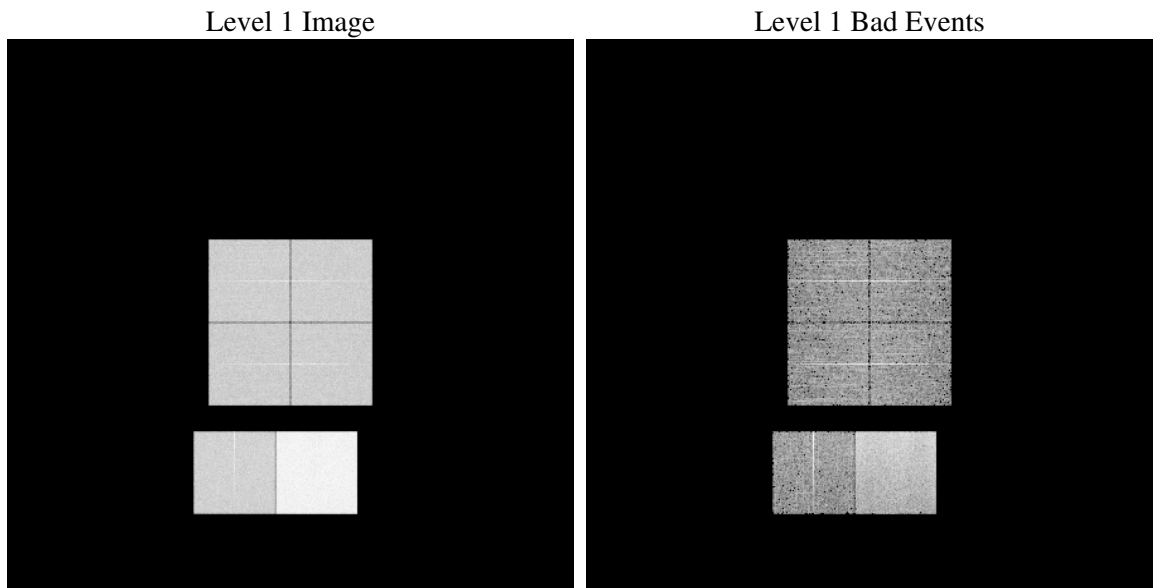
1 Front

seq_num	
obs_id	61345
title	ACIS-012367 diagnostics
observer	CHANDRA engineering request/realtime commanding
object	
dtcycle	0
cycle	P
ra_targ	0.0
dec_targ	0.0
ra_nom	177.99700347464
dec_nom	-5.9715355377264
roll_nom	63.222551407331
revision	2
ontime	8182.4000076205
livetime	8078.7895318742
ontime0	3285.2833959609
ontime1	3261.9780110717
ontime2	3035.7239543349
ontime3	3138.6965373456
ontime6	3385.7545894384
ontime7	8182.4000076205
l2events	1283588

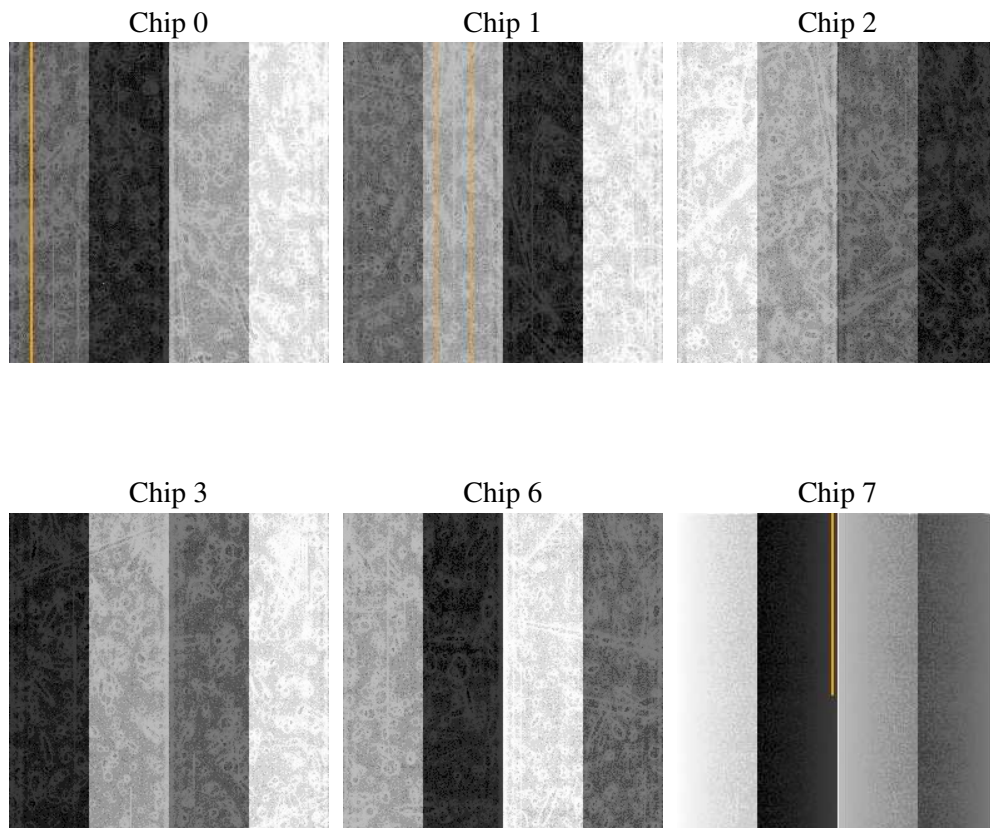
2 OBI

2.1 OBI

2.1.1 Images



2.1.2 Bias



2.1.3 Parameters

obi_num	0
ascdsver	7.6.8.1
caldsver	3.2.3
date	2006-08-28T08:05:59
revision	2

sched_exp_time	0.0
ontime	8300.2025939077
ontime0	3331.7844676077
ontime1	3302.6149781495
ontime2	3082.2249761522
ontime3	3179.4566244185
ontime6	3435.4967010766
ontime7	8300.2025939077
l1events	1535941

2.1.4 Events

	ccd 0	ccd 1	ccd 2	ccd 3	ccd 6	ccd 7
level 1 events	204546	202824	193804	199111	221045	514611
rejected events	25642	25232	26687	26675	27380	66418
rejected %	12%	12%	13%	13%	12%	12%

	ccd 0	ccd 1	ccd 2	ccd 3	ccd 6	ccd 7
grade 0 events	99937	98996	94188	97811	106946	83432
	48%	48%	48%	49%	48%	16%
grade 1 events	533	508	487	531	523	189
	0%	0%	0%	0%	0%	0%
grade 2 events	31938	31697	29948	30588	34261	136762
	15%	15%	15%	15%	15%	26%
grade 3 events	11669	11495	10684	11164	12077	34320
	5%	5%	5%	5%	5%	6%
grade 4 events	11456	11375	10720	10944	12144	33550
	5%	5%	5%	5%	5%	6%
grade 5 events	1690	1724	1507	1792	1952	8321
	0%	0%	0%	0%	0%	1%
grade 6 events	26537	26369	24302	24236	31232	166686
	12%	13%	12%	12%	14%	32%
grade 7 events	20786	20660	21968	22045	21910	51351
	10%	10%	11%	11%	9%	9%

2.2 Compared Parameters

Parameter	Planned	Actual	Parameter	Planned	Actual
Instrument	ACIS	ACIS	Obspar format version number	6	6
Detector	ACIS-012367	ACIS-012367	Obspar file type	PREDICTED	ACTUAL
Grating	NONE	NONE	Obspar update status	NONE	UPDATED
Data mode	FAINT	FAINT	On-chip summing requested	N	N
Observation mode	SECONDARY	SECONDARY	Subarray requested	NONE	NONE
Pointing RA	0	177.9970034746419	Alternating exposures requested	N	N
Pointing Dec	0	-5.971535537726427	Primary exposure time	3.2	3.2
Pointing Roll	0.0	63.22255140733121			
SIM focus pos (mm)	-0.782348	-0.6828225247311905			
SIM defocus (mm)	0	0.8505141146731063			
SIM translation stage pos (mm)	-233.592463	250.466033080201			
SIM translation stage offset (mm)	0	-0.01005468664627074			
Observation start time	127734886.753291	127734885.98483			
Observation start date	2002-01-18T09:54:47	2002-01-18T09:54:45			
Observation end time	127756196.504148	127756195.73569			
Observation end date	2002-01-18T15:49:57	2002-01-18T15:49:55			
Read mode	TIMED	TIMED			

2.3 Aspect

2.4 Star Slots

2.5 FID Slots

A Summary

A.1 Status

V&V Scientist	Jen Lauer
V&V Date (YYYY-MM-DD)	2006.08.28
V&V Edition	1
V&V Disposition and Status	OK
V&V Charge Time	8.1824

A.2 Comments