

V&V Reference Report

L2 ASCDS Version : 8.4.5

Observation 61235 - L2 Version 3
Chandra X-Ray Center

L2 Processing Date : Oct 5 2012

Contents

1	Front	2
2	OBI	3
2.1	OBI	3
2.1.1	Images	3
2.1.2	Bias	3
2.1.3	Parameters	4
2.1.4	Events	4
2.2	Compared Parameters	5
2.3	Star Slots	6
2.4	FID Slots	6
A	Summary	7
A.1	Status	7
A.2	Comments	7

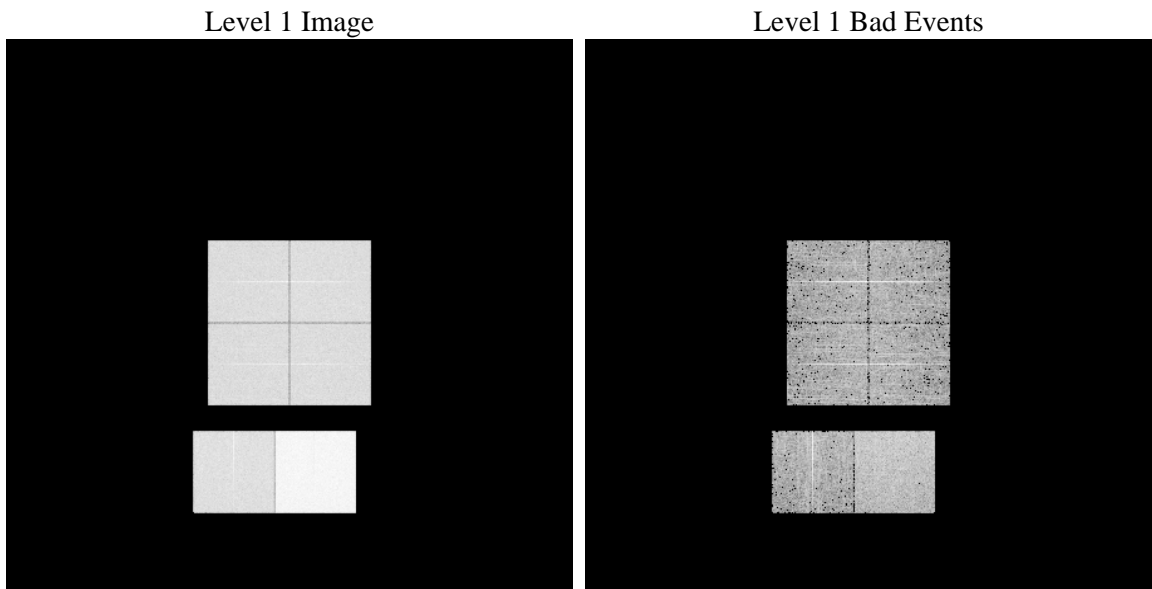
1 Front

seq_num	 	Sequence number
obs_id	61235	Observation id
title	ACIS-012367 diagnostics	Proposal title
observer	CHANDRA engineering request/realtime commanding	Principal investig
object	 	Source name
dtcycle	0	
cycle	P	events from which exps? Prim/Second/Both
ra_targ	0.0	Observer's specified target RA [deg]
dec_targ	0.0	Observer's specified target Dec [deg]
ra_nom	100.0351149123	Nominal RA [deg]
dec_nom	59.977406336607	Nominal Dec [deg]
roll_nom	275.03312156296	Nominal Roll [deg]
revision	3	Processing version of data
ontime	7793.7040435374	Sum of GTIs [s]
livetime	7695.0154701329	Livetime [s]
ontime0	3261.0780062079	Sum of GTIs [s]
ontime1	3373.0992829502	Sum of GTIs [s]
ontime2	3115.2318549156	Sum of GTIs [s]
ontime3	3168.7924177051	Sum of GTIs [s]
ontime6	3467.1708453	Sum of GTIs [s]
ontime7	7793.7040435374	Sum of GTIs [s]
l2events	1228774	Number of level 2 events

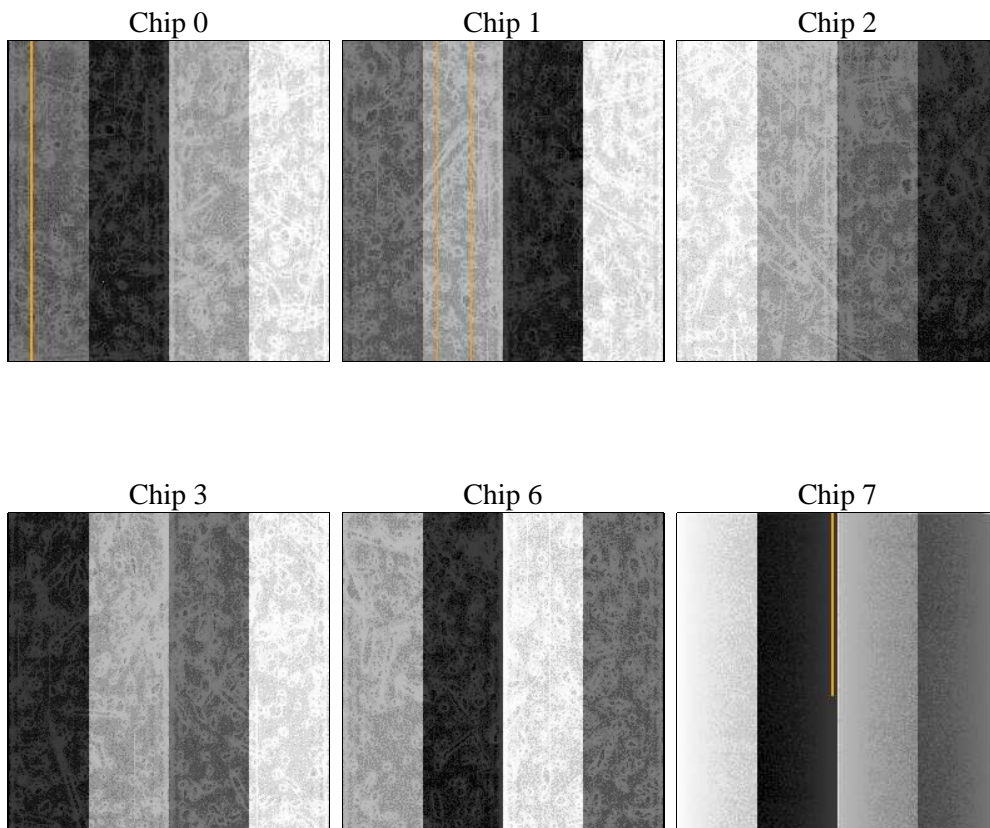
2 OBI

2.1 OBI

2.1.1 Images



2.1.2 Bias



2.1.3 Parameters

obi_num	2	Obi number	sched_exp_time	0.0	[s] Scheduled observation exposure time
ascdsver	8.4.5	Processing system revision	ontime	7793.7040435374	Sum of GTIs [s]
caldsver	4.5.2	 	ontime0	3261.0780062079	Sum of GTIs [s]
date	2012-10-05T15:06:00	Date and time of file creation	ontime1	3373.0992829502	Sum of GTIs [s]
revision	3	Processing version of data	ontime2	3115.2318549156	Sum of GTIs [s]
			ontime3	3168.7924177051	Sum of GTIs [s]
			ontime6	3467.1708453	Sum of GTIs [s]
			ontime7	7793.7040435374	Sum of GTIs [s]
			l1events	1441359	Number of level 1 events

2.1.4 Events

	ccd 0	ccd 1	ccd 2	ccd 3	ccd 6	ccd 7		ccd 0	ccd 1	ccd 2	ccd 3	ccd 6	ccd 7
level 1 events	191149	196959	187387	189407	214261	462196	grade 0 events	92978	96346	90910	92291	103067	107293
rejected events	22721	22708	24194	24051	25164	41408		48%	48%	48%	48%	48%	23%
rejected %	11%	11%	12%	12%	11%	8%	grade 1 events	476	479	465	456	497	265
								0%	0%	0%	0%	0%	0%
							grade 2 events	29967	30738	28841	28922	32759	93086
								15%	15%	15%	15%	15%	20%
							grade 3 events	10664	11072	10323	10519	11733	42845
								5%	5%	5%	5%	5%	9%
							grade 4 events	10619	11084	10241	10498	11613	42331
								5%	5%	5%	5%	5%	9%
							grade 5 events	1542	1736	1567	1716	1885	8328
								0%	0%	0%	0%	0%	1%
							grade 6 events	24388	25309	23165	23126	29925	135233
								12%	12%	12%	12%	13%	29%
							grade 7 events	20515	20195	21875	21879	22782	32815
								10%	10%	11%	11%	10%	7%

2.2 Compared Parameters

Parameter	Planned	Actual	Parameter	Planned	Actual
Instrument	ACIS	ACIS	Obspar format version number	7	7
Detector	ACIS-012367	ACIS-012367	Obspar file type	PREDICTED	ACTUAL
Grating	NONE	NONE	Obspar update status	NONE	UPDATED
Data mode	FAINT	FAINT	On-chip summing requested	N	N
Observation mode	SECONDARY	SECONDARY	Subarray requested	NONE	NONE
[deg] Pointing RA	0	100.0351149122961	Alternating exposures requested	N	N
[deg] Pointing Dec	0	59.97740633660666	[s] Primary exposure time	3.2	3.2
[deg] Pointing Roll	0.0	275.0331215629607			
[mm] SIM focus pos	-0.782348	-0.6828225247311905			
[mm] SIM defocus	0	0.8505141146731063			
[mm] SIM translation stage pos	-233.592463	250.466033080201			
[mm] SIM translation stage offset	0	-0.01005468664627074			
[s] Observation start time (MET)	135011071.203752	135011070.17904			
Observation start date	2002-04-12T15:04:31	2002-04-12T15:04:30			
[s] Observation end time (MET)	135044410.355106	135044409.3304			
Observation end date	2002-04-13T00:20:10	2002-04-13T00:20:09			
Read mode	TIMED	TIMED			

2.3 Star Slots

2.4 FID Slots

A Summary

A.1 Status

V&V Scientist	Beth Sundheim
V&V Date (YYYY-MM-DD)	2012.10.11
V&V Edition	1
V&V Disposition and Status	OK
V&V Charge Time	7.7937040435374

A.2 Comments