

V&V Reference Report

L2 ASCDS Version : 7.6.8.1

Observation 61235 - L2 Version 001
Chandra X-Ray Center

L2 Processing Date : Sep 11 2006

Contents

1	Front	2
2	OBI	3
2.1	OBI	3
2.1.1	Images	3
2.1.2	Bias	3
2.1.3	Parameters	4
2.1.4	Events	4
2.2	Compared Parameters	5
2.3	Aspect	6
2.4	Star Slots	8
2.5	FID Slots	8
A	Summary	9
A.1	Status	9
A.2	Comments	9

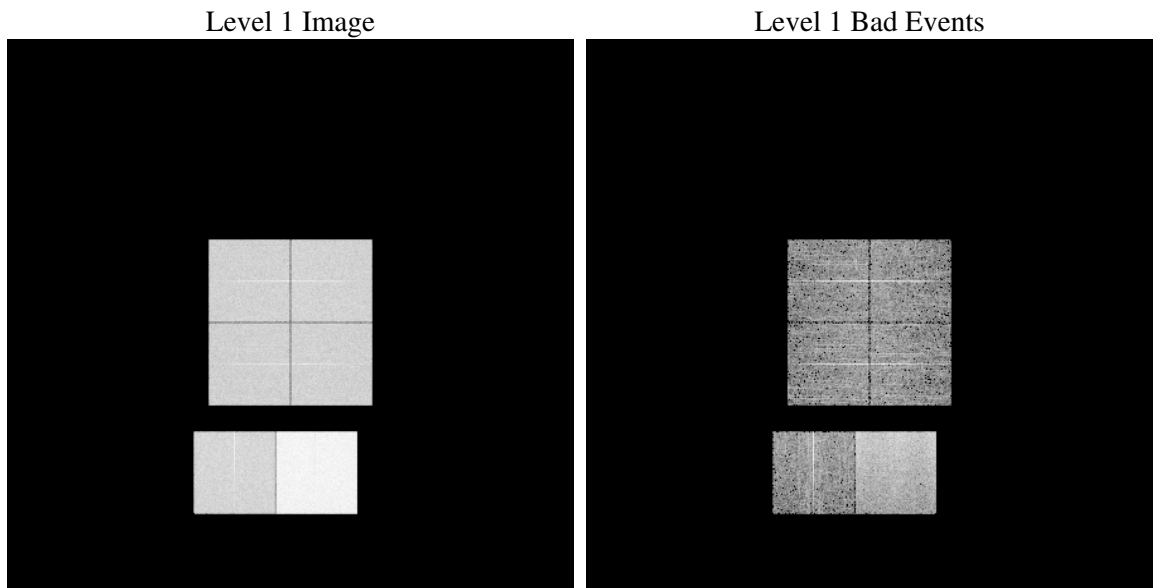
1 Front

seq_num	
obs_id	61235
title	ACIS-012367 diagnostics
observer	CHANDRA engineering request/realtime commanding
object	
dtcycle	0
cycle	P
ra_targ	0.0
dec_targ	0.0
ra_nom	100.03511490656
dec_nom	59.977406338896
roll_nom	275.03312156744
revision	2
ontime	7792.1040435433
livetime	7693.4357303022
ontime0	3261.0780062079
ontime1	3371.4992829561
ontime2	3115.2318549156
ontime3	3167.192417711
ontime6	3465.5708453059
ontime7	7792.1040435433
l2events	1214673

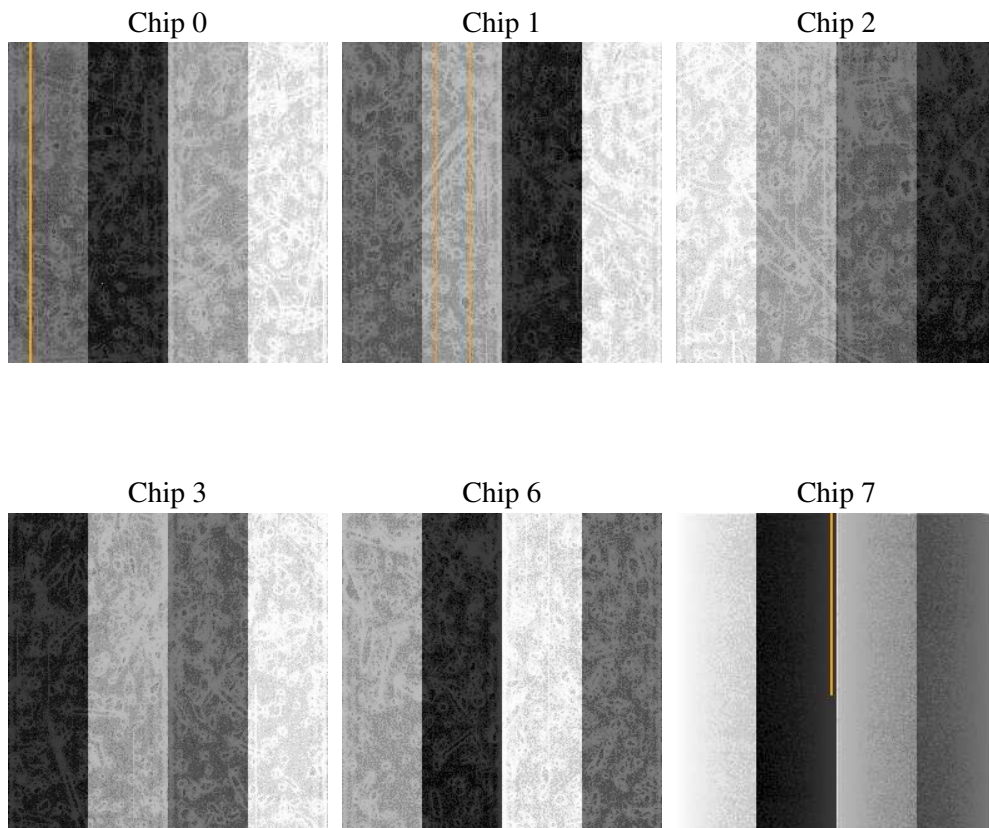
2 OBI

2.1 OBI

2.1.1 Images



2.1.2 Bias



2.1.3 Parameters

obi_num	2
ascdsver	7.6.8.1
caldsver	3.2.3
date	2006-09-11T06:32:07
revision	2

sched_exp_time	0.0
ontime	7794.6020367444
ontime0	3263.7210820913
ontime1	3373.9151961505
ontime2	3117.874930799
ontime3	3169.7314509153
ontime6	3467.9046785235
ontime7	7794.6020367444
l1events	1441359

2.1.4 Events

	ccd 0	ccd 1	ccd 2	ccd 3	ccd 6	ccd 7
level 1 events	191149	196959	187387	189407	214261	462196
rejected events	22690	22860	24204	24215	25361	55164
rejected %	11%	11%	12%	12%	11%	11%

	ccd 0	ccd 1	ccd 2	ccd 3	ccd 6	ccd 7
grade 0 events	92978	96346	90910	92291	103067	76332
	48%	48%	48%	48%	48%	16%
grade 1 events	476	479	465	456	497	182
	0%	0%	0%	0%	0%	0%
grade 2 events	29967	30738	28841	28922	32759	121748
	15%	15%	15%	15%	15%	26%
grade 3 events	10664	11072	10323	10519	11733	30998
	5%	5%	5%	5%	5%	6%
grade 4 events	10619	11084	10241	10499	11613	30479
	5%	5%	5%	5%	5%	6%
grade 5 events	1542	1736	1567	1715	1884	7546
	0%	0%	0%	0%	0%	1%
grade 6 events	24388	25309	23165	23126	29925	147651
	12%	12%	12%	12%	13%	31%
grade 7 events	20515	20195	21875	21879	22783	47260
	10%	10%	11%	11%	10%	10%

2.2 Compared Parameters

Parameter	Planned	Actual	Parameter	Planned	Actual
Instrument	ACIS	ACIS	Obspar format version number	6	6
Detector	ACIS-012367	ACIS-012367	Obspar file type	PREDICTED	ACTUAL
Grating	NONE	NONE	Obspar update status	NONE	UPDATED
Data mode	FAINT	FAINT	On-chip summing requested	N	N
Observation mode	SECONDARY	SECONDARY	Subarray requested	NONE	NONE
Pointing RA	0	100.0351149065617	Alternating exposures requested	N	N
Pointing Dec	0	59.97740633889602	Primary exposure time	3.2	3.2
Pointing Roll	0.0	275.0331215674404			
SIM focus pos (mm)	-0.782348	-0.6828225247311905			
SIM defocus (mm)	0	0.8505141146731063			
SIM translation stage pos (mm)	-233.592463	250.466033080201			
SIM translation stage offset (mm)	0	-0.01005468664627074			
Observation start time	135011071.203752	135011070.17904			
Observation start date	2002-04-12T15:04:31	2002-04-12T15:04:30			
Observation end time	135044410.355106	135044409.3304			
Observation end date	2002-04-13T00:20:10	2002-04-13T00:20:09			
Read mode	TIMED	TIMED			

2.3 Aspect

2.4 Star Slots

2.5 FID Slots

A Summary

A.1 Status

V&V Scientist	Jen Lauer
V&V Date (YYYY-MM-DD)	2006.09.11
V&V Edition	1
V&V Disposition and Status	OK
V&V Charge Time	7.79210404

A.2 Comments