

V&V Reference Report

L2 ASCDS Version : 8.4.5

Observation 61145 - L2 Version 3
Chandra X-Ray Center

L2 Processing Date : Oct 10 2012

Contents

1	Front	2
2	OBI	3
2.1	OBI	3
2.1.1	Images	3
2.1.2	Bias	3
2.1.3	Parameters	4
2.1.4	Events	4
2.2	Compared Parameters	5
2.3	Star Slots	6
2.4	FID Slots	6
A	Summary	7
A.1	Status	7
A.2	Comments	7

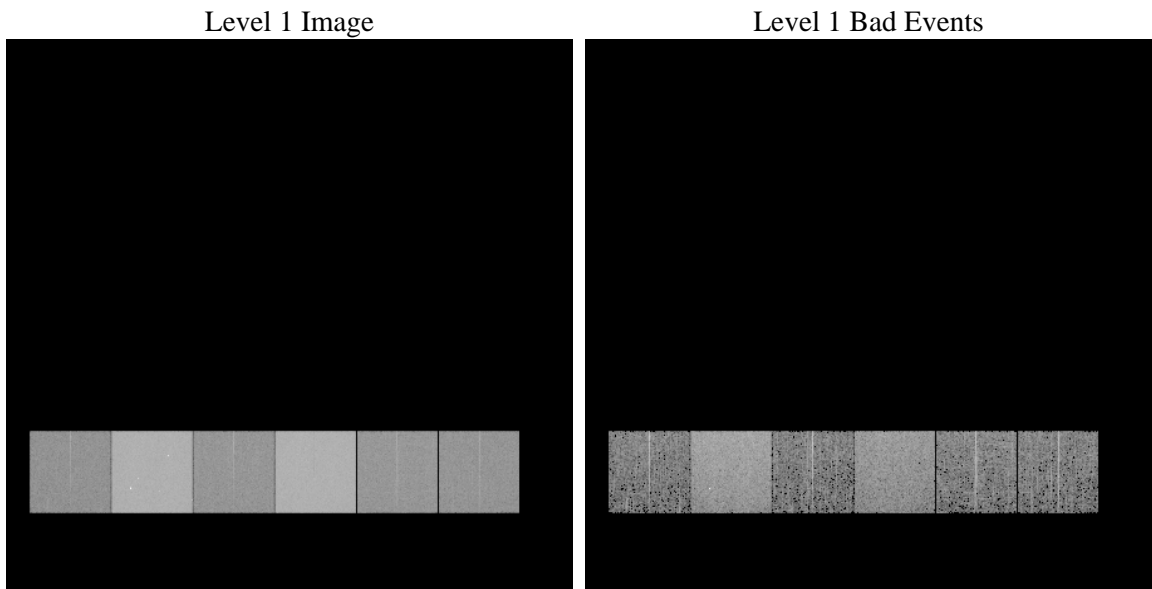
1 Front

seq_num	 	Sequence number
obs_id	61145	Observation id
title	ACIS-456789 diagnostics	Proposal title
observer	CHANDRA engineering request/realtime commanding	Principal investig
object	 	Source name
dtcycle	0	
cycle	P	events from which exps? Prim/Second/Both
ra_targ	0.0	Observer's specified target RA [deg]
dec_targ	0.0	Observer's specified target Dec [deg]
ra_nom	151.89710120388	Nominal RA [deg]
dec_nom	-22.028480850369	Nominal Dec [deg]
roll_nom	231.67163008649	Nominal Roll [deg]
revision	3	Processing version of data
ontime	7211.2061811686	Sum of GTIs [s]
livetime	7119.8935464355	Livetime [s]
ontime4	2537.7316125333	Sum of GTIs [s]
ontime5	7713.5136024654	Sum of GTIs [s]
ontime6	2732.1934040189	Sum of GTIs [s]
ontime7	7211.2061811686	Sum of GTIs [s]
ontime8	2842.3882155418	Sum of GTIs [s]
ontime9	2699.7831238508	Sum of GTIs [s]
l2events	1210596	Number of level 2 events

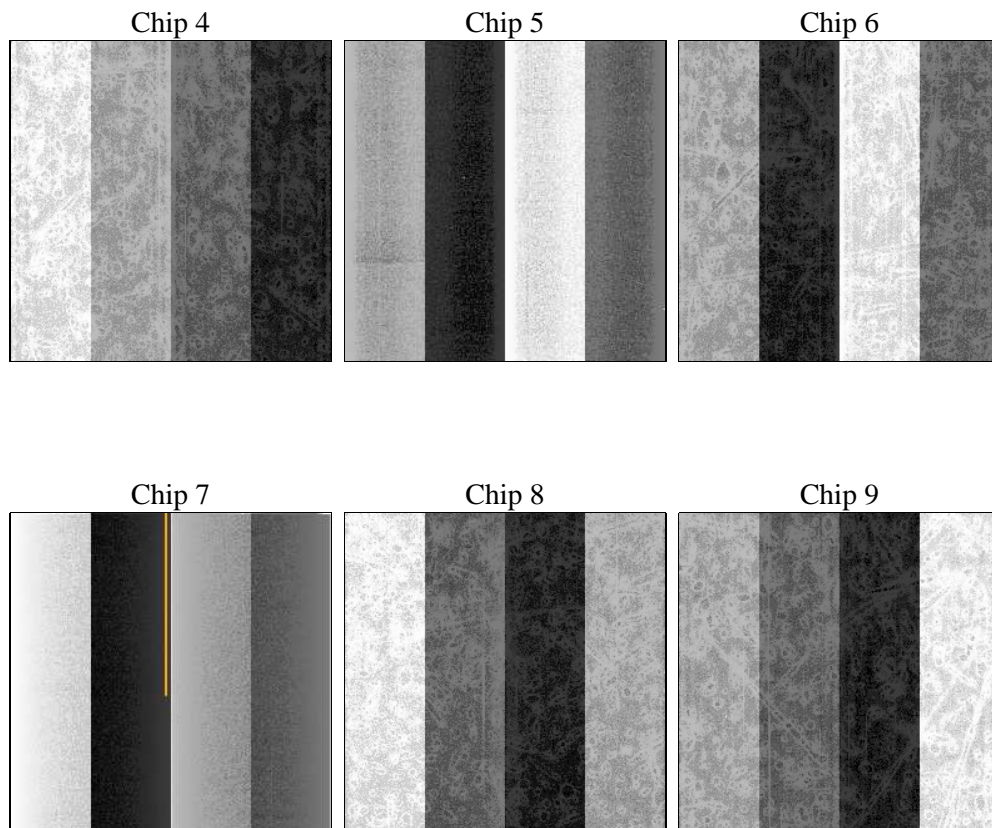
2 OBI

2.1 OBI

2.1.1 Images



2.1.2 Bias



2.1.3 Parameters

obi_num	0	Obi number	sched_exp_time	0.0	[s] Scheduled observation exposure time
ascdsver	8.4.5	Processing system revision	ontime	7211.2061811686	Sum of GTIs [s]
caldsver	4.5.2	 	ontime4	2537.7316125333	Sum of GTIs [s]
date	2012-10-10T08:44:11	Date and time of file creation	ontime5	7713.5136024654	Sum of GTIs [s]
revision	3	Processing version of data	ontime6	2732.1934040189	Sum of GTIs [s]
			ontime7	7211.2061811686	Sum of GTIs [s]
			ontime8	2842.3882155418	Sum of GTIs [s]
			ontime9	2699.7831238508	Sum of GTIs [s]
			l1events	1444449	Number of level 1 events

2.1.4 Events

	ccd 4	ccd 5	ccd 6	ccd 7	ccd 8	ccd 9		ccd 4	ccd 5	ccd 6	ccd 7	ccd 8	ccd 9
level 1 events	141829	405724	161431	410362	170114	154989	grade 0 events	68202	87000	76508	93461	80248	72840
rejected events	21245	54239	21252	39533	23582	21531		48%	21%	47%	22%	47%	46%
rejected %	14%	13%	13%	9%	13%	13%	grade 1 events	387	707	354	262	370	377
								0%	0%	0%	0%	0%	0%
							grade 2 events	21137	122631	24209	81991	25779	23743
								14%	30%	14%	19%	15%	15%
							grade 3 events	7471	23000	8687	37642	9401	8412
								5%	5%	5%	9%	5%	5%
							grade 4 events	7331	22878	8616	36901	9353	8131
								5%	5%	5%	8%	5%	5%
							grade 5 events	1287	9691	1544	8016	1732	1576
								0%	2%	0%	1%	1%	1%
							grade 6 events	16443	95976	22159	120834	21751	20332
								11%	23%	13%	29%	12%	13%
							grade 7 events	19571	43841	19354	31255	21480	19578
								13%	10%	11%	7%	12%	12%

2.2 Compared Parameters

Parameter	Planned	Actual
Instrument	ACIS	ACIS
Detector	ACIS-456789	ACIS-456789
Grating	NONE	NONE
Data mode	FAINT	FAINT
Observation mode	SECONDARY	SECONDARY
[deg] Pointing RA	0	151.8971012038757
[deg] Pointing Dec	0	-22.02848085036949
[deg] Pointing Roll	0.0	231.6716300864946
[mm] SIM focus pos	-0.684267	-0.6828225247311905
[mm] SIM defocus	0	0.8505141146731063
[mm] SIM translation stage pos	-190.132523	250.466033080201
[mm] SIM translation stage offset	0	-0.01005468664627074
[s] Observation start time (MET)	141865254.683557	141865253.65882
Observation start date	2002-06-30T23:00:55	2002-06-30T23:00:53
[s] Observation end time (MET)	141875676.883985	141875675.85925
Observation end date	2002-07-01T01:54:37	2002-07-01T01:54:35
Read mode	TIMED	TIMED

Parameter	Planned	Actual
Obspar format version number	7	7
Obspar file type	PREDICTED	ACTUAL
Obspar update status	NONE	UPDATED
On-chip summing requested	N	N
Subarray requested	NONE	NONE
Alternating exposures requested	N	N
[s] Primary exposure time	3.2	3.2

2.3 Star Slots

2.4 FID Slots

A Summary

A.1 Status

V&V Scientist	Jen Lauer
V&V Date (YYYY-MM-DD)	2012.10.19
V&V Edition	1
V&V Disposition and Status	OK
V&V Charge Time	7.2112061811686

A.2 Comments