

V&V Reference Report

L2 ASCDS Version : 7.6.9

Observation 61145 - L2 Version 001
Chandra X-Ray Center

L2 Processing Date : Sep 21 2006

Contents

1	Front	2
2	OBI	3
2.1	OBI	3
2.1.1	Images	3
2.1.2	Bias	3
2.1.3	Parameters	4
2.1.4	Events	4
2.2	Compared Parameters	5
2.3	Aspect	6
2.4	Star Slots	8
2.5	FID Slots	8
A	Summary	9
A.1	Status	9
A.2	Comments	9

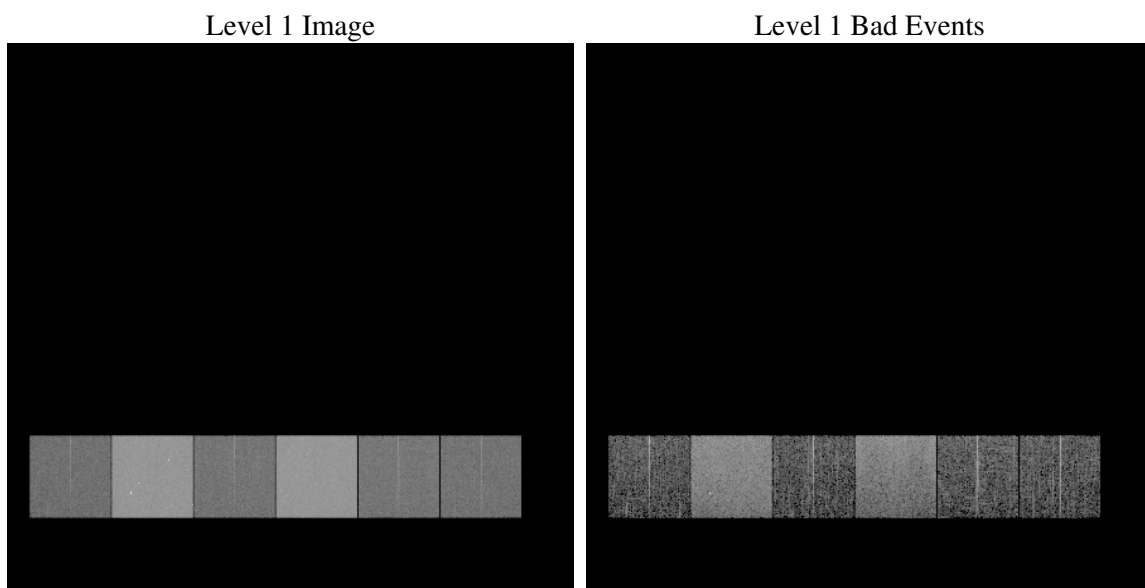
1 Front

seq_num	
obs_id	61145
title	ACIS-456789 diagnostics
observer	CHANDRA engineering request/realtime commanding
object	
dtcycle	0
cycle	P
ra_targ	0.0
dec_targ	0.0
ra_nom	151.89710007856
dec_nom	-22.028481409826
roll_nom	231.67162966491
revision	2
ontime	7210.2914227545
livetime	7118.9903712433
ontime4	2536.9171141684
ontime5	7712.680924058
ontime6	2731.3378656507
ontime7	7210.2914227545
ontime8	2841.6147571504
ontime9	2698.8044654727
l2events	1187896

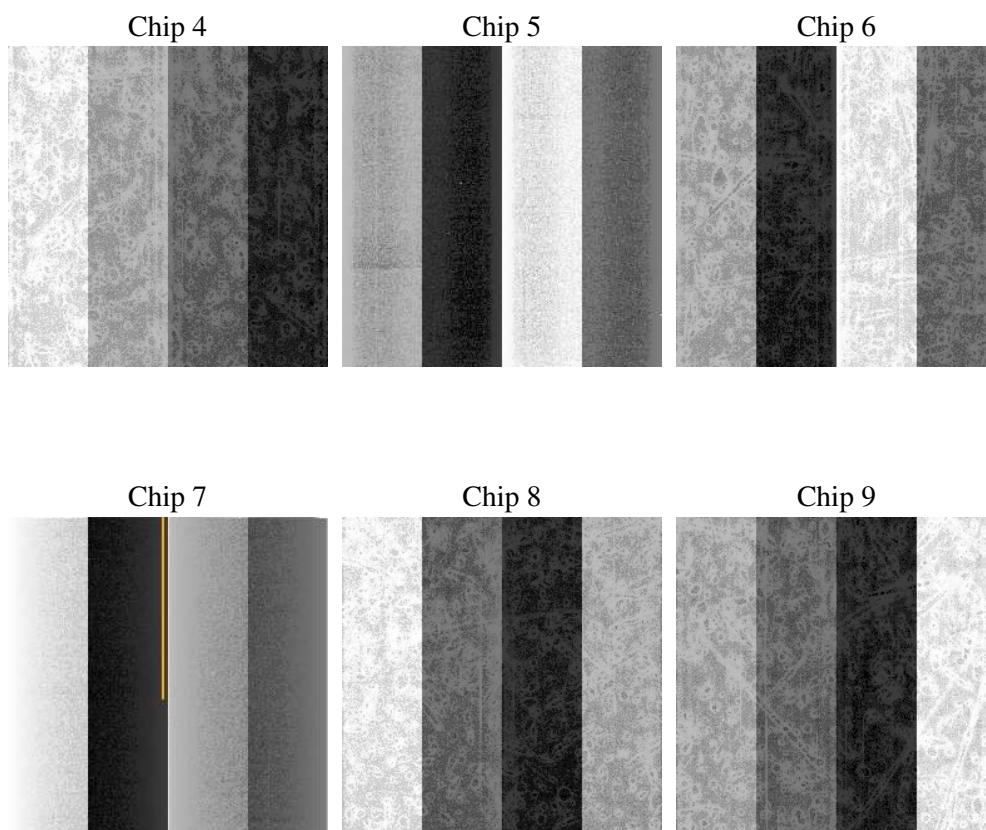
2 OBI

2.1 OBI

2.1.1 Images



2.1.2 Bias



2.1.3 Parameters

obi_num	0
ascdsver	7.6.9
caldsver	3.2.3
date	2006-09-21T12:40:20
revision	2

sched_exp_time	0.0
ontime	7211.2290411294
ontime4	2537.7316125333
ontime5	7713.5775024295
ontime6	2732.1934040189
ontime7	7211.2290411294
ontime8	2842.3882155418
ontime9	2699.7831238508
l1events	1444449

2.1.4 Events

	ccd 4	ccd 5	ccd 6	ccd 7	ccd 8	ccd 9
level 1 events	141829	405724	161431	410362	170114	154989
rejected events	21245	64316	21250	52531	23582	21531
rejected %	14%	15%	13%	12%	13%	13%

	ccd 4	ccd 5	ccd 6	ccd 7	ccd 8	ccd 9
grade 0 events	68205	44144	76510	65971	80251	72843
	48%	10%	47%	16%	47%	46%
grade 1 events	387	539	354	166	370	377
	0%	0%	0%	0%	0%	0%
grade 2 events	21134	161259	24207	107398	25776	23740
	14%	39%	14%	26%	15%	15%
grade 3 events	7471	12178	8687	26805	9402	8414
	5%	3%	5%	6%	5%	5%
grade 4 events	7331	12049	8620	26085	9353	8131
	5%	2%	5%	6%	5%	5%
grade 5 events	1288	7221	1543	7232	1733	1577
	0%	1%	0%	1%	1%	1%
grade 6 events	16443	111778	22157	131572	21750	20330
	11%	27%	13%	32%	12%	13%
grade 7 events	19570	56556	19353	45133	21479	19577
	13%	13%	11%	10%	12%	12%

2.2 Compared Parameters

Parameter	Planned	Actual	Parameter	Planned	Actual
Instrument	ACIS	ACIS	Obspar format version number	6	6
Detector	ACIS-456789	ACIS-456789	Obspar file type	PREDICTED	ACTUAL
Grating	NONE	NONE	Obspar update status	NONE	UPDATED
Data mode	FAINT	FAINT	On-chip summing requested	N	N
Observation mode	SECONDARY	SECONDARY	Subarray requested	NONE	NONE
Pointing RA	0	151.8971000785557	Alternating exposures requested	N	N
Pointing Dec	0	-22.0284814098263	Primary exposure time	3.2	3.2
Pointing Roll	0.0	231.6716296649058			
SIM focus pos (mm)	-0.684267	-0.6828225247311905			
SIM defocus (mm)	0	0.8505141146731063			
SIM translation stage pos (mm)	-190.132523	250.466033080201			
SIM translation stage offset (mm)	0	-0.01005468664627074			
Observation start time	141865254.683557	141865253.65882			
Observation start date	2002-06-30T23:00:55	2002-06-30T23:00:53			
Observation end time	141875676.883985	141875675.85925			
Observation end date	2002-07-01T01:54:37	2002-07-01T01:54:35			
Read mode	TIMED	TIMED			

2.3 Aspect

2.4 Star Slots

2.5 FID Slots

A Summary

A.1 Status

V&V Scientist	Jen Lauer
V&V Date (YYYY-MM-DD)	2006.09.21
V&V Edition	1
V&V Disposition and Status	OK
V&V Charge Time	7.21029142

A.2 Comments