

# V&V Reference Report

## L2 ASCDS Version : 8.4.5

Observation 60585 - L2 Version 3  
Chandra X-Ray Center

L2 Processing Date : Nov 3 2012

## Contents

<b>1</b>	<b>Front</b>	<b>2</b>
<b>2</b>	<b>OBI Primary</b>	<b>3</b>
2.1	OBI . . . . .	3
2.1.1	Images . . . . .	3
2.1.2	Bias . . . . .	3
2.1.3	Parameters . . . . .	4
2.1.4	Events . . . . .	4
2.2	Compared Parameters . . . . .	5
2.3	Star Slots . . . . .	6
2.4	FID Slots . . . . .	6
<b>3</b>	<b>OBI Secondary</b>	<b>6</b>
3.1	OBI . . . . .	6
3.1.1	Images . . . . .	6
3.1.2	Bias . . . . .	6
3.1.3	Parameters . . . . .	7
3.1.4	Events . . . . .	7
<b>A</b>	<b>Summary</b>	<b>8</b>
A.1	Status . . . . .	8
A.2	Comments . . . . .	8

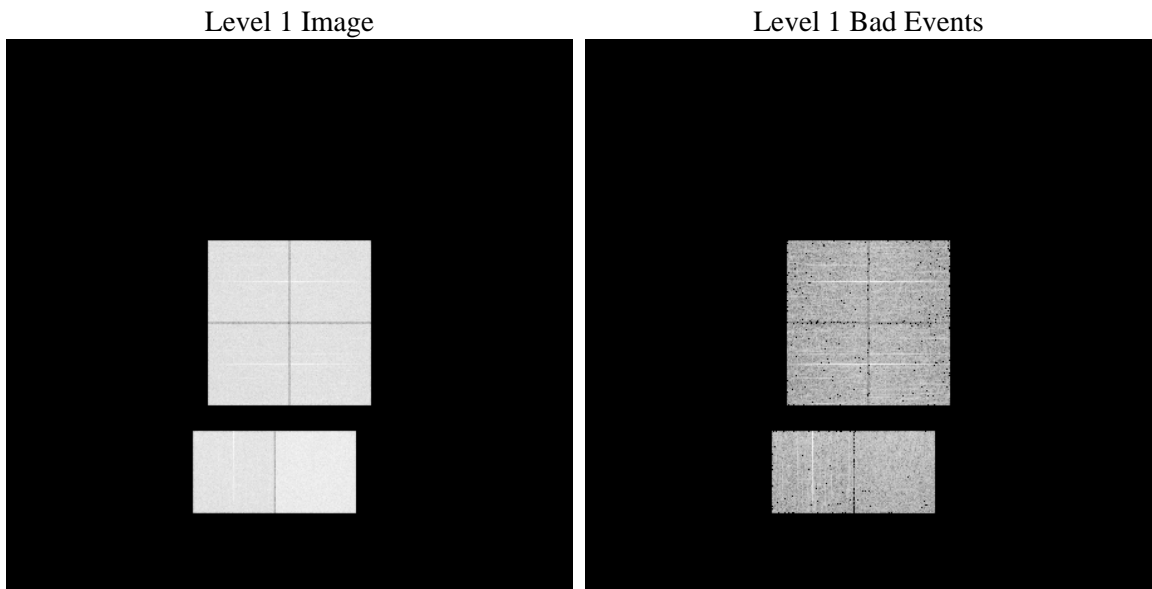
# 1 Front

seq_num	&#160	Sequence number
obs_id	60585	Observation id
title	ACIS-012367 diagnostics	Proposal title
observer	CHANDRA engineering request/realtime commanding	Principal investig
object	&#160	Source name
dtcycle	0	&#160
cycle	P	events are from which exps? P[rimary] S[econdar
ra_targ	0.0	Observer's specified target RA [deg]
dec_targ	0.0	Observer's specified target Dec [deg]
ra_nom	270.21822930729	Nominal RA [deg]
dec_nom	-26.023476505364	Nominal Dec [deg]
roll_nom	272.03921323669	Nominal Roll [deg]
revision	3	Processing version of data
ontime	6662.9049821794	Sum of GTIs [s]
livetime	6595.2378419213	Livetime [s]
ontime0	4795.789268285	Sum of GTIs [s]
ontime1	4888.7742283344	Sum of GTIs [s]
ontime2	4562.3341637254	Sum of GTIs [s]
ontime3	4783.7892682552	Sum of GTIs [s]
ontime6	5022.9627564847	Sum of GTIs [s]
ontime7	6662.9049821794	Sum of GTIs [s]
l2events	1101360	Number of level 2 events

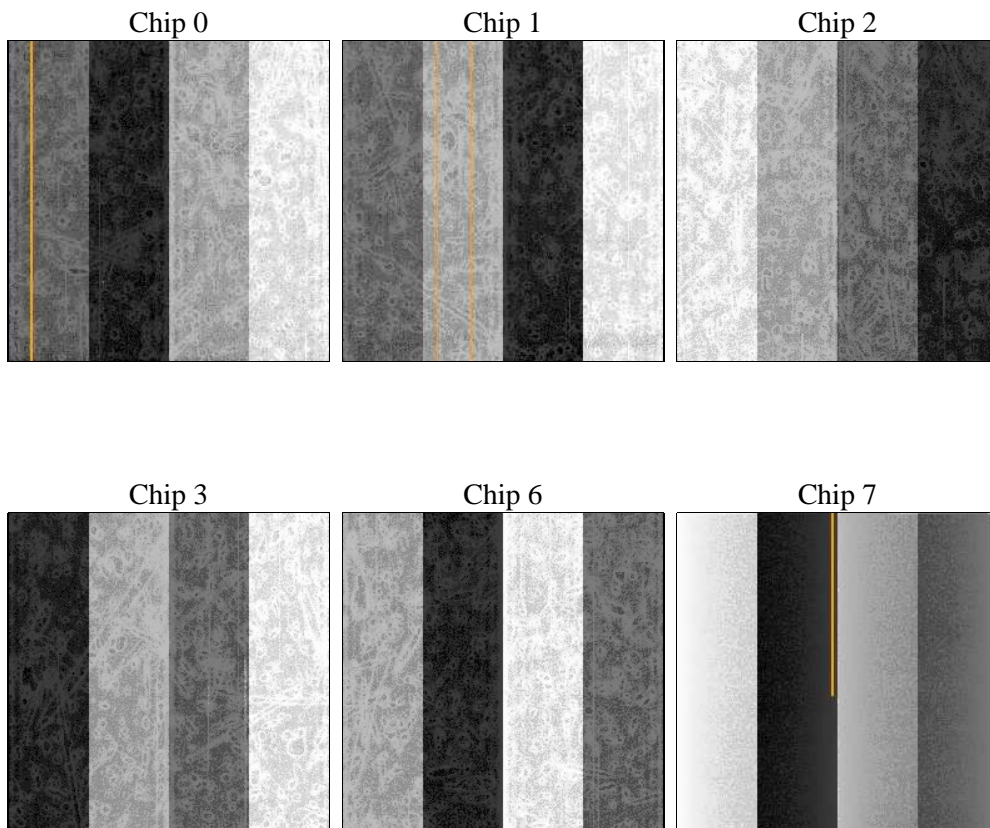
## 2 OBI Primary

### 2.1 OBI

#### 2.1.1 Images



#### 2.1.2 Bias



### 2.1.3 Parameters

obi_num	0	Obi number	sched_exp_time	0.0	[s] Scheduled observation exposure time
ascdsver	8.4.5	Processing system revision	ontime	6662.9049821794	Sum of GTIs [s]
caldsver	4.5.2	&#160	ontime0	4795.789268285	Sum of GTIs [s]
date	2012-11-03T17:00:40	Date and time of file creation	ontime1	4888.7742283344	Sum of GTIs [s]
revision	3	Processing version of data	ontime2	4562.3341637254	Sum of GTIs [s]
			ontime3	4783.7892682552	Sum of GTIs [s]
			ontime6	5022.9627564847	Sum of GTIs [s]
			ontime7	6662.9049821794	Sum of GTIs [s]
			l1events	1331939	Number of level 1 events

### 2.1.4 Events

	ccd 0	ccd 1	ccd 2	ccd 3	ccd 6	ccd 7		ccd 0	ccd 1	ccd 2	ccd 3	ccd 6	ccd 7
level 1 events	202199	208002	197361	207751	223916	292710	grade 0 events	96693	98793	95031	99356	104877	65639
rejected events	26843	28143	28466	30839	31569	31706		47%	47%	48%	47%	46%	22%
rejected %	13%	13%	14%	14%	14%	10%	grade 1 events	570	507	577	655	594	208
								0%	0%	0%	0%	0%	0%
							grade 2 events	30578	31896	28699	30105	33174	58026
								15%	15%	14%	14%	14%	19%
							grade 3 events	11331	11415	10884	11472	11719	26571
								5%	5%	5%	5%	5%	9%
							grade 4 events	11334	11434	10964	11565	12143	26338
								5%	5%	5%	5%	5%	8%
							grade 5 events	2135	2012	1938	2201	2382	6288
								1%	0%	0%	1%	1%	2%
							grade 6 events	25420	26321	23317	24414	30434	84430
								12%	12%	11%	11%	13%	28%
							grade 7 events	24138	25624	25951	27983	28593	25210
								11%	12%	13%	13%	12%	8%

## 2.2 Compared Parameters

Parameter	Planned	Actual	Parameter	Planned	Actual
Instrument	ACIS	ACIS	Obspar format version number	7	7
Detector	ACIS-012367	ACIS-012367	Obspar file type	PREDICTED	ACTUAL
Grating	NONE	NONE	Obspar update status	NONE	UPDATED
Data mode	FAINT	FAINT	On-chip summing requested	N	N
Observation mode	SECONDARY	SECONDARY	Subarray requested	NONE	NONE
[deg] Pointing RA	0	270.2182293072935	Alternating exposures requested	N	Y
[deg] Pointing Dec	0	-26.02347650536446	[s] Primary exposure time	0.000000	4
[deg] Pointing Roll	0.0	272.0392132366892	[s] Secondary exposure time	N/A	3.2
[mm] SIM focus pos	-0.782348	-0.6828225247311905	Duty cycle	N/A	1
[mm] SIM defocus	0	0.8505141146731063			
[mm] SIM translation stage pos	-233.592463	250.466033080201			
[mm] SIM translation stage offset	0	-0.01005468664627074			
[s] Observation start time (MET)	177501570.576302	177501569.55158			
Observation start date	2003-08-17T09:59:31	2003-08-17T09:59:29			
[s] Observation end time (MET)	177546453.278222	177546452.2535			
Observation end date	2003-08-17T22:27:33	2003-08-17T22:27:32			
Read mode	TIMED	TIMED			

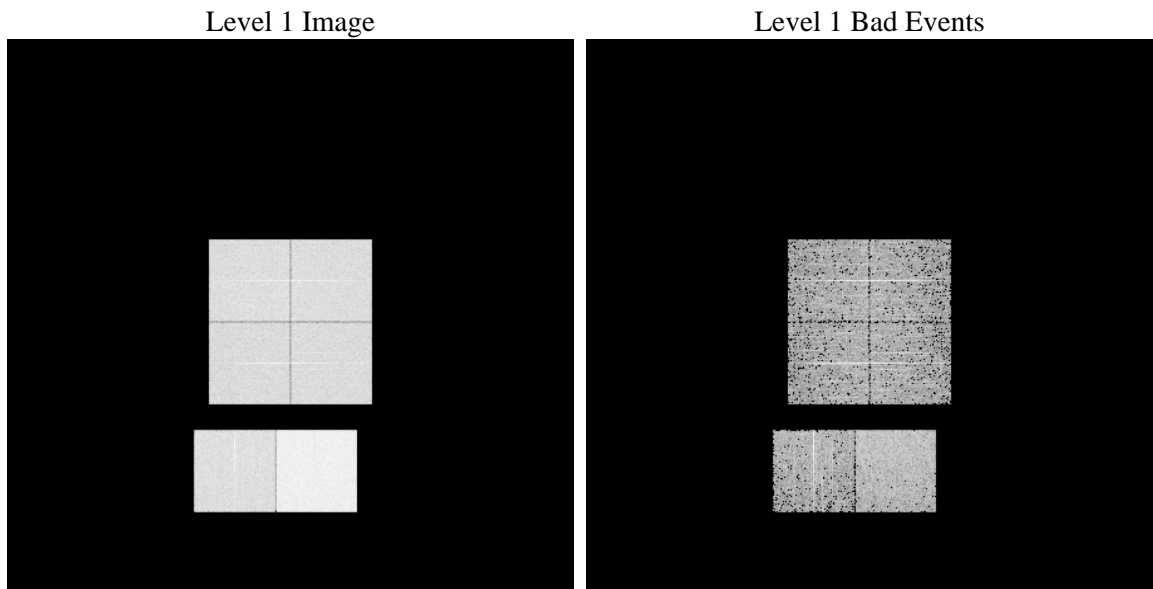
## 2.3 Star Slots

## 2.4 FID Slots

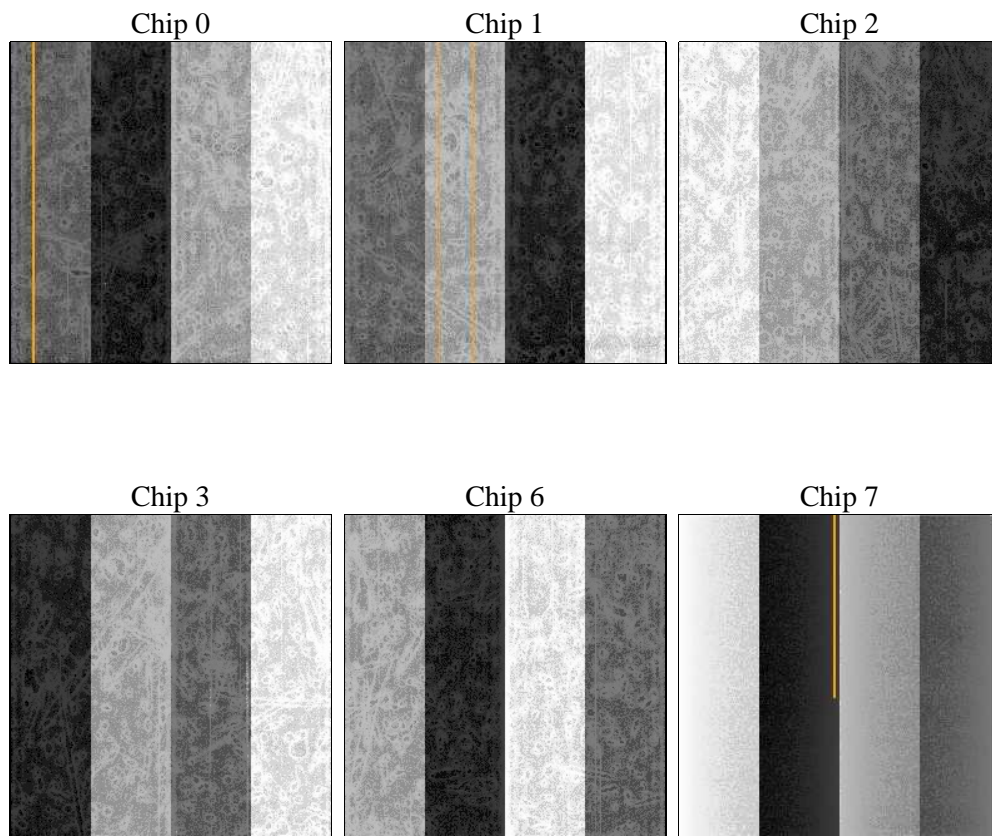
# 3 OBI Secondary

## 3.1 OBI

### 3.1.1 Images



### 3.1.2 Bias



### 3.1.3 Parameters

obi_num	0	Obi number			
ascdsver	8.4.5	Processing system revision	sched_exp_time	0.0	[s] Scheduled observation exposure time
caldsver	4.5.2	&#160	ontime	5340.5138702691	Sum of GTIs [s]
date	2012-11-03T17:06:14	Date and time of file creation	ontime0	2968.9478844106	Sum of GTIs [s]
revision	3	Processing version of data	ontime1	2861.9525247216	Sum of GTIs [s]
			ontime2	2625.3155653477	Sum of GTIs [s]
			ontime3	2670.6490852237	Sum of GTIs [s]
			ontime6	2894.2487123013	Sum of GTIs [s]
			ontime7	5340.5138702691	Sum of GTIs [s]
			l1events	850849	Number of level 1 events

### 3.1.4 Events

	ccd 0	ccd 1	ccd 2	ccd 3	ccd 6	ccd 7
level 1 events	126191	123040	115508	117563	132076	236471
rejected events	17812	17537	17704	17907	19600	27136
rejected %	14%	14%	15%	15%	14%	11%

	ccd 0	ccd 1	ccd 2	ccd 3	ccd 6	ccd 7
grade 0 events	60032	58146	55123	55963	61192	52512
	47%	47%	47%	47%	46%	22%
grade 1 events	309	265	307	298	277	156
	0%	0%	0%	0%	0%	0%
grade 2 events	18848	18591	16669	17261	19668	46063
	14%	15%	14%	14%	14%	19%
grade 3 events	7047	6805	6239	6559	7082	21197
	5%	5%	5%	5%	5%	8%
grade 4 events	6967	6652	6376	6549	6916	21196
	5%	5%	5%	5%	5%	8%
grade 5 events	1220	1219	1176	1208	1358	5312
	0%	0%	1%	1%	1%	2%
grade 6 events	15596	15445	13517	13437	17738	68501
	12%	12%	11%	11%	13%	28%
grade 7 events	16172	15917	16101	16288	17845	21534
	12%	12%	13%	13%	13%	9%



## A Summary

### A.1 Status

V&V Scientist	Jen Lauer
V&V Date (YYYY-MM-DD)	2012.12.06
V&V Edition	1
V&V Disposition and Status	OK
V&V Charge Time	12.0034188524485

### A.2 Comments

Observation was done in interleaved mode.