

V&V Reference Report

L2 ASCDS Version : 8.5.1

Observation 6055 - L2 Version 3
Chandra X-Ray Center

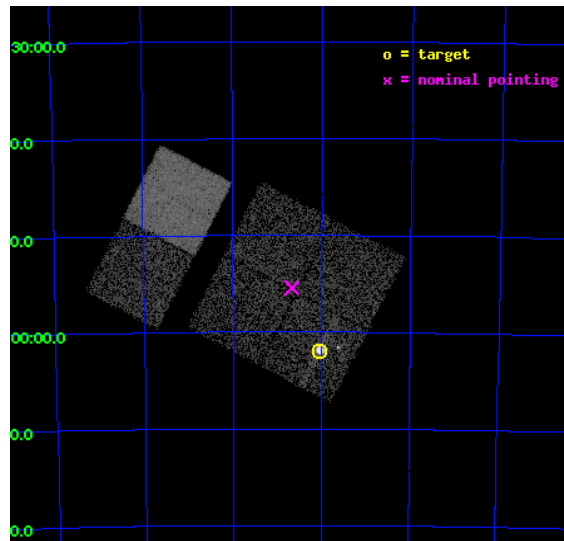
L2 Processing Date : Dec 14 2012

Contents

1	Front	2
2	OBI	3
2.1	OBI	3
2.1.1	Images	3
2.1.2	Bias	3
2.1.3	Parameters	4
2.1.4	Events	4
2.2	Compared Parameters	5
2.3	Aspect	6
2.4	Star Slots	9
2.4.1	Slot 3	9
2.4.2	Slot 4	10
2.4.3	Slot 5	11
2.4.4	Slot 6	12
2.4.5	Slot 7	13
2.5	FID Slots	14
2.5.1	Slot 0	14
2.5.2	Slot 1	15
2.5.3	Slot 2	16
A	Summary	17
A.1	Status	17
A.2	Comments	17

1 Front

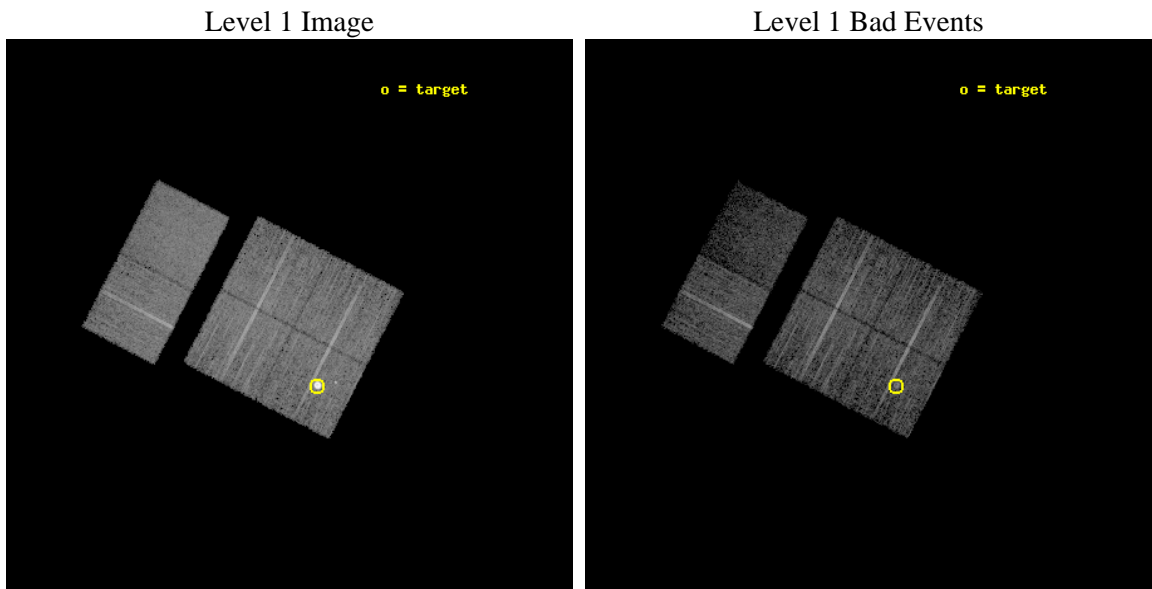
seq_num	590382	Sequence number
obs_id	6055	Observation id
title	AO6A ACIS-I Calibration Observations of E0102-72	Proposal title
observer	Dr. CXC Calibration	Principal investigator
object	E0102-72[I0,-120,4.7,-5.68,0]	Source name
dtcycle	0	
cycle	P	events from which exps? Prim/Second/Both
ra_targ	16.01	Observer's specified target RA [deg]
dec_targ	-72.032028	Observer's specified target Dec [deg]
ra_nom	16.16814997914	Nominal RA [deg]
dec_nom	-71.923777764231	Nominal Dec [deg]
roll_nom	297.3925441935	Nominal Roll [deg]
revision	3	Processing version of data
ontime	7955.1999703646	Sum of GTIs [s]
livetime	7854.4664382935	Livetime [s]
ontime0	7955.1999703646	Sum of GTIs [s]
ontime1	7955.1999703646	Sum of GTIs [s]
ontime2	7955.1999703646	Sum of GTIs [s]
ontime3	7955.1999703646	Sum of GTIs [s]
ontime6	7951.9589802027	Sum of GTIs [s]
ontime7	7955.1999703646	Sum of GTIs [s]
l2events	65678	Number of level 2 events



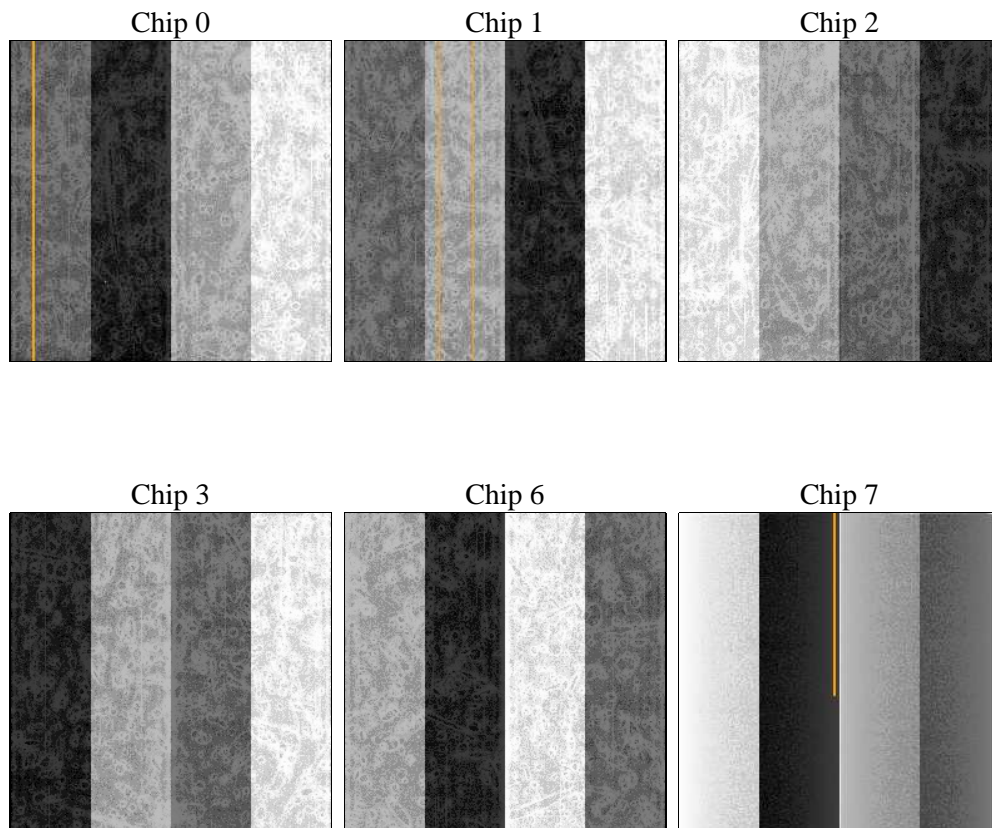
2 OBI

2.1 OBI

2.1.1 Images



2.1.2 Bias



2.1.3 Parameters

obi_num	1	Obi number	sched_exp_time	8000.000000	[s] Scheduled observation exposure time
ascdsver	8.5.1	Processing system revision	ontime	7955.1999703646	Sum of GTIs [s]
caldsver	4.5.5	 	ontime0	7955.1999703646	Sum of GTIs [s]
date	2012-12-14T20:27:45	Date and time of file creation	ontime1	7955.1999703646	Sum of GTIs [s]
revision	3	Processing version of data	ontime2	7955.1999703646	Sum of GTIs [s]
			ontime3	7955.1999703646	Sum of GTIs [s]
			ontime6	7951.9589802027	Sum of GTIs [s]
			ontime7	7955.1999703646	Sum of GTIs [s]
			l1events	309429	Number of level 1 events

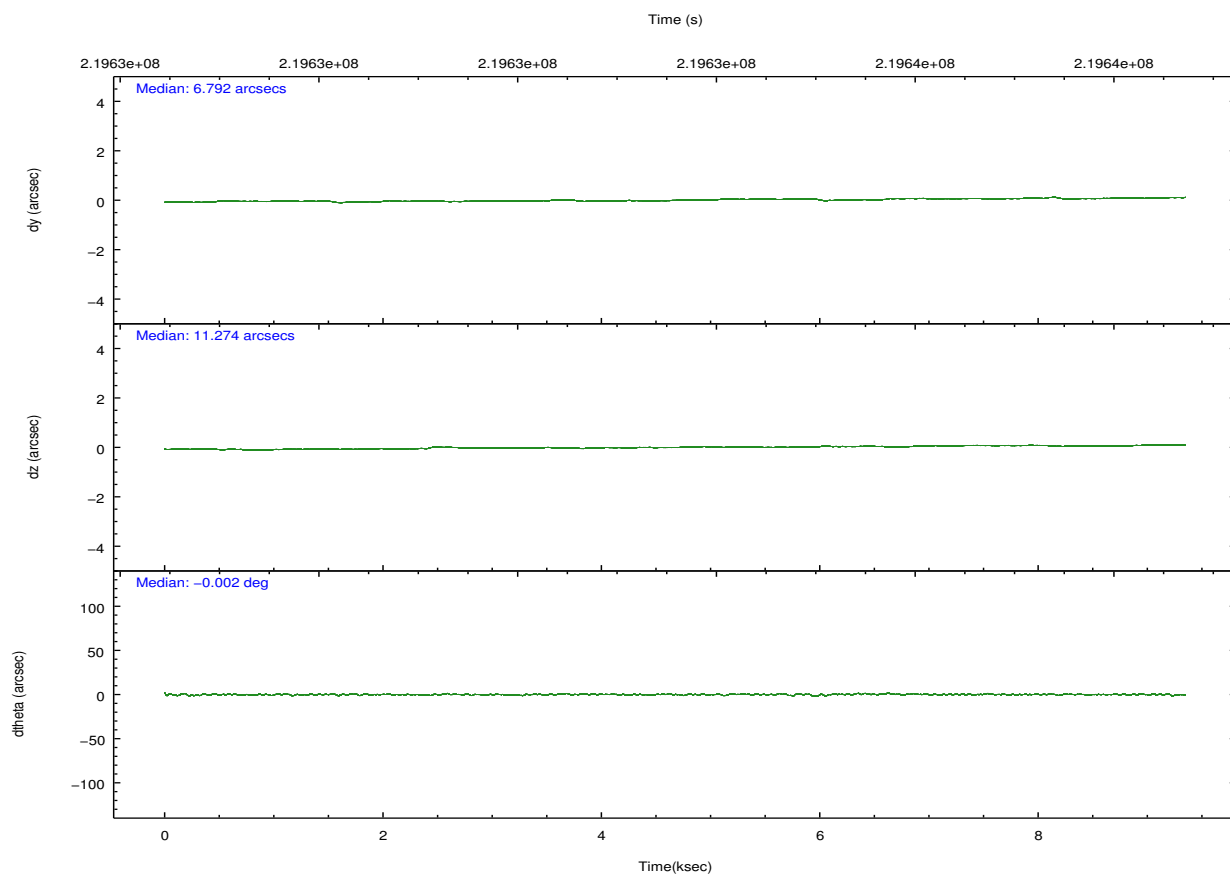
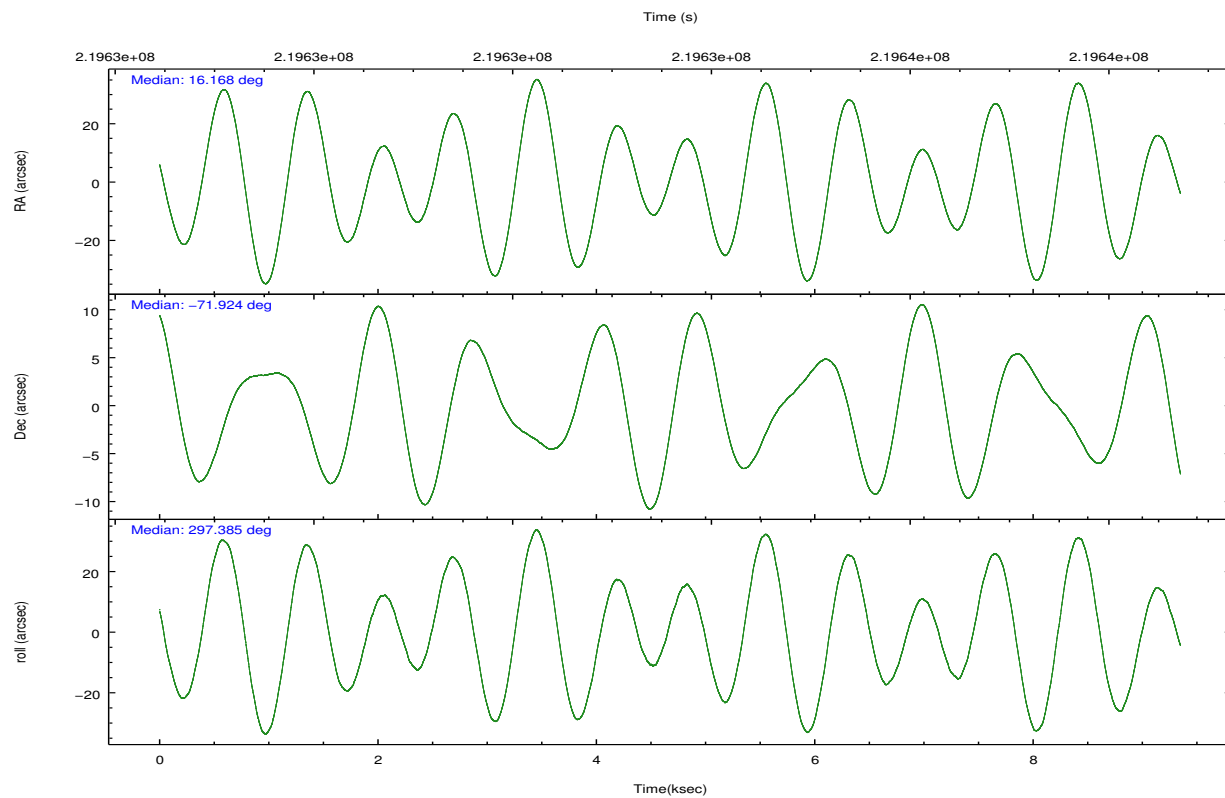
2.1.4 Events

	ccd 0	ccd 1	ccd 2	ccd 3	ccd 6	ccd 7		ccd 0	ccd 1	ccd 2	ccd 3	ccd 6	ccd 7
level 1 events	67316	45992	52129	47330	49632	47030	grade 0 events	21901	1845	1841	1585	1862	2594
rejected events	39769	40966	47412	43011	44539	22776		32%	4%	3%	3%	3%	5%
rejected %	59%	89%	90%	90%	89%	48%	grade 1 events	184	12	35	20	23	43
								0%	0%	0%	0%	0%	0%
							grade 2 events	2784	1066	1013	913	1109	5079
								4%	2%	1%	1%	2%	10%
							grade 3 events	923	642	520	511	571	2314
								1%	1%	0%	1%	1%	4%
							grade 4 events	899	589	556	490	557	2325
								1%	1%	1%	1%	1%	4%
							grade 5 events	1482	1553	1322	1573	1717	4856
								2%	3%	2%	3%	3%	10%
							grade 6 events	1049	885	789	821	997	11949
								1%	1%	1%	1%	2%	25%
							grade 7 events	38094	39400	46053	41417	42796	17870
								56%	85%	88%	87%	86%	37%

2.2 Compared Parameters

Parameter	Planned	Actual	Parameter	Planned	Actual
Instrument	ACIS	ACIS	Obspar format version number	7	7
Detector	ACIS-012367	ACIS-012367	Obspar file type	PREDICTED	ACTUAL
Grating	NONE	NONE	Obspar update status	NONE	UPDATED
Data mode	VFAINT	VFAINT	Number of optional ACIS chips dropped	0	0
Observation mode	POINTING	POINTING	On-chip summing requested	N	N
[deg] Pointing RA	16.093642	16.16814997914028	Subarray requested	NONE	NONE
[deg] Pointing Dec	-71.909102	-71.92377776423075	Alternating exposures requested	N	N
[deg] Pointing Roll	297.113033	297.3925441935027	[s] Primary exposure time	0.000000	3.2
[s] Window start time (MET)	215654464.184000	215654464.184000			
[s] Window stop time (MET)	220838464.184000	220838464.184000			
[mm] SIM focus pos	-0.782348	-0.7809083437167272			
[mm] SIM defocus	0	0.001439871863259334			
[mm] SIM translation stage pos	-233.592463	-233.5874344608287			
[mm] SIM translation stage offset	0	-0.005018542100998502			
[s] Observation start time (MET)	219630262.184000	219628716.24112			
Observation start date	2004-12-17T00:23:18	2004-12-16T23:58:36			
[s] Observation end time (MET)	219638262.184000	219639549.4666			
Observation end date	2004-12-17T02:36:38	2004-12-17T02:59:09			
Read mode	TIMED	TIMED			

2.3 Aspect

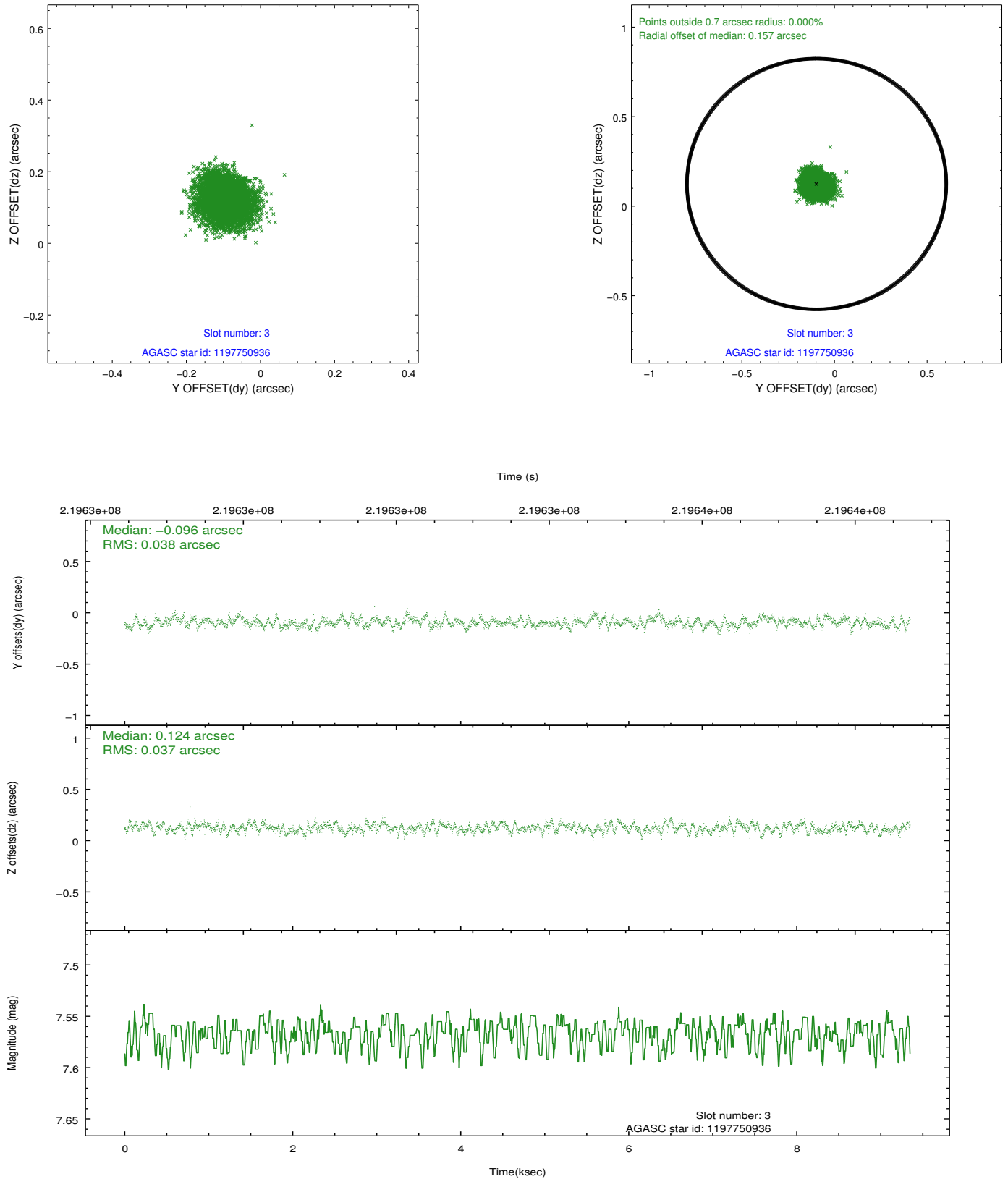


Slot Statistics

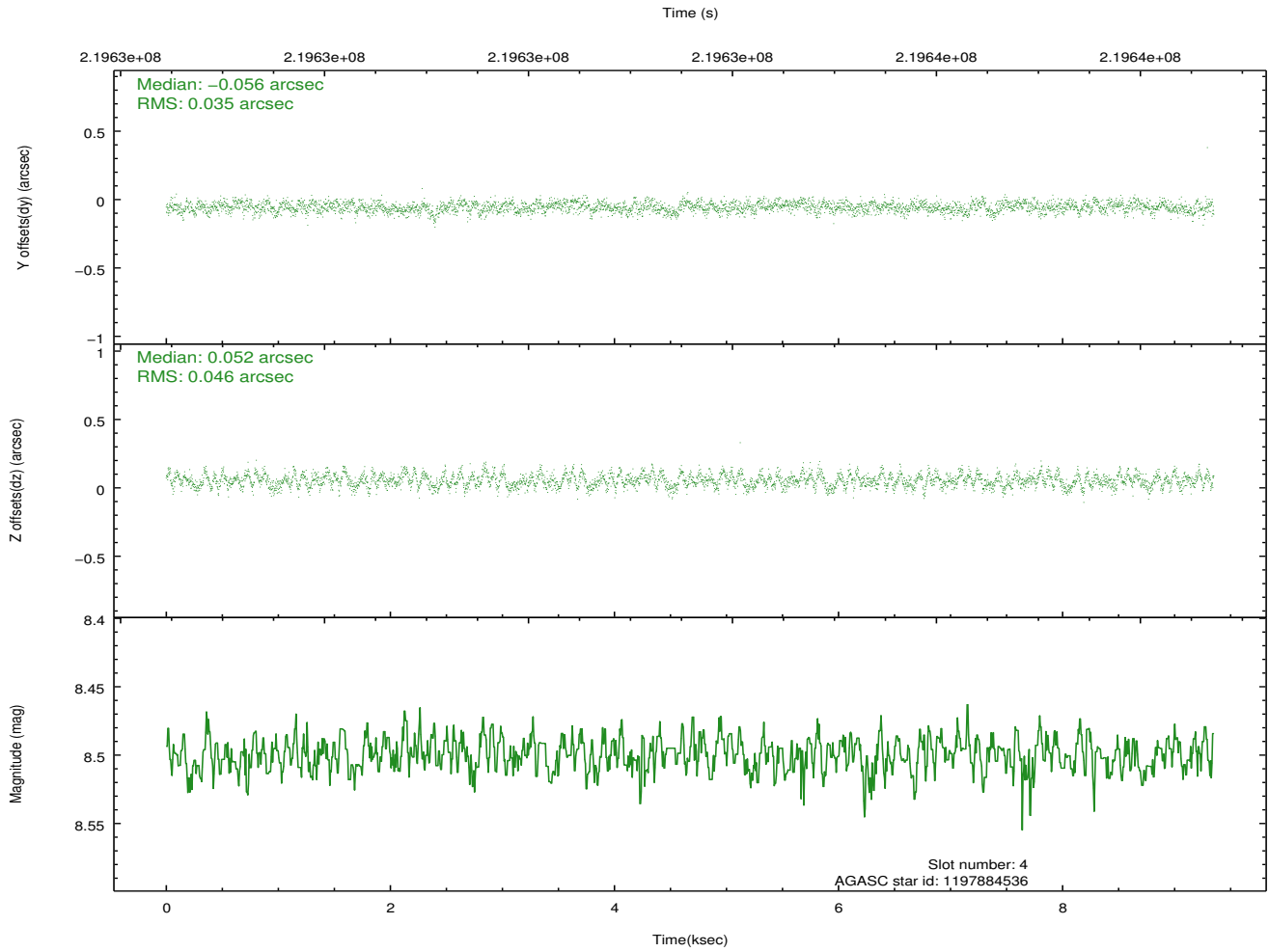
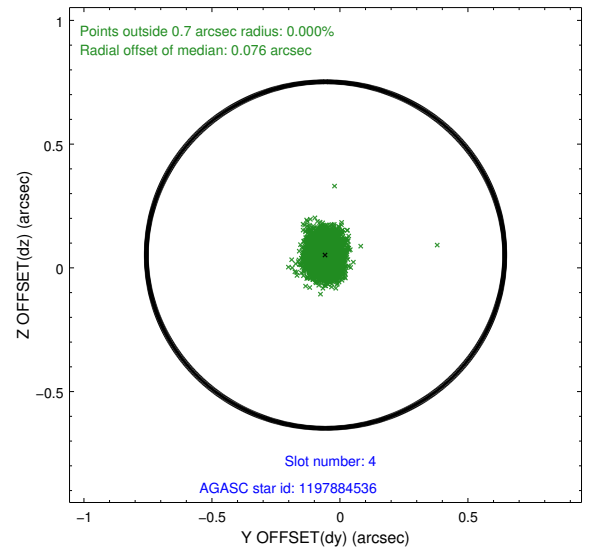
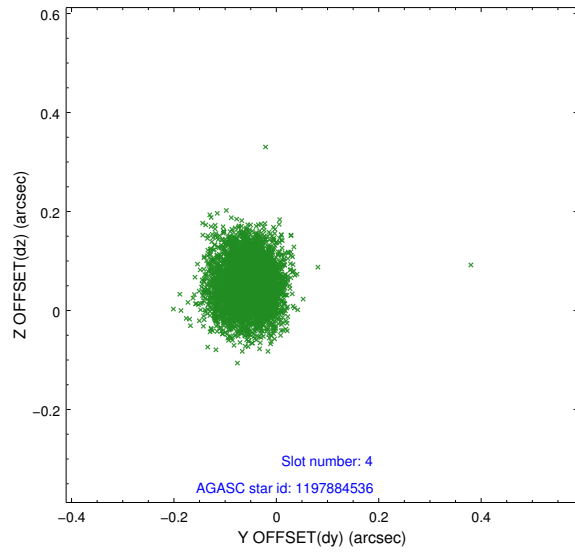
slot	status	id	mag	n_pts	med_dy	med_dz	dr1	dr2	ra	dec	mean_y	mean_z
0	FID	ACIS-I-1	7.24	2281	-0.008	-0.069	0.008	0.014	0.000000	0.000000	932.88	-834.85
1	FID	ACIS-I-4	7.18	2281	0.089	0.075	0.008	0.013	0.000000	0.000000	2153.35	1064.81
2	FID	ACIS-I-5	7.22	2281	-0.180	0.065	0.007	0.013	0.000000	0.000000	-1814.54	1063.32
3	GUIDE	1197750936	7.57	4562	-0.096	0.124	0.057	0.090	15.387940	-71.549550	-1513.91	-128.02
4	GUIDE	1197884536	8.50	4561	-0.056	0.052	0.061	0.100	17.160729	-71.835289	318.48	1182.28
5	GUIDE	1197884712	8.31	4562	0.102	0.009	0.067	0.109	16.087398	-72.252690	1098.50	-569.40
6	GUIDE	1197885328	7.23	4562	0.001	-0.128	0.052	0.083	16.283090	-71.733943	-463.01	477.75
7	GUIDE	1198189696	7.40	4560	0.053	-0.055	0.062	0.105	15.223750	-72.697522	2108.67	-2125.34

2.4 Star Slots

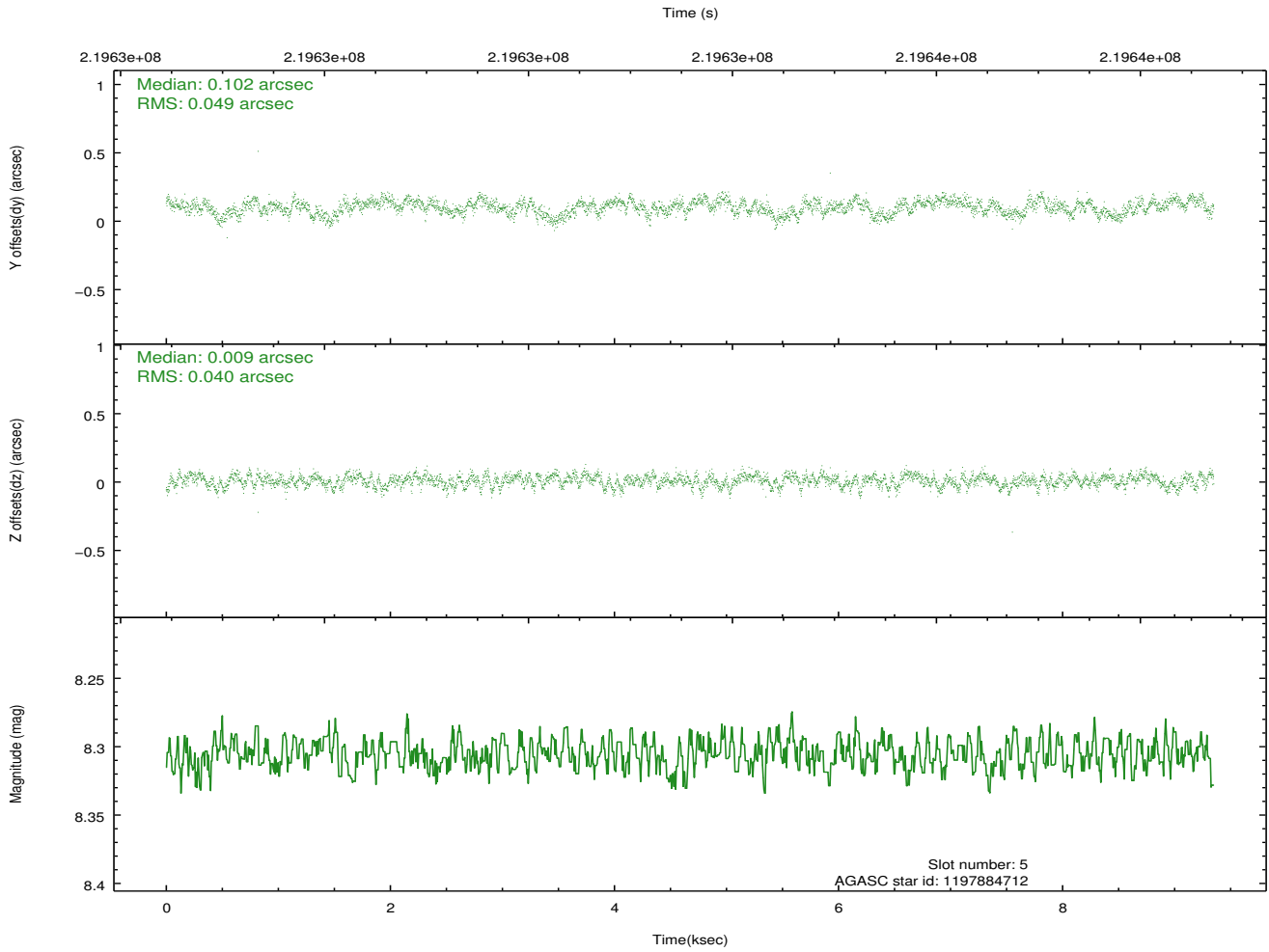
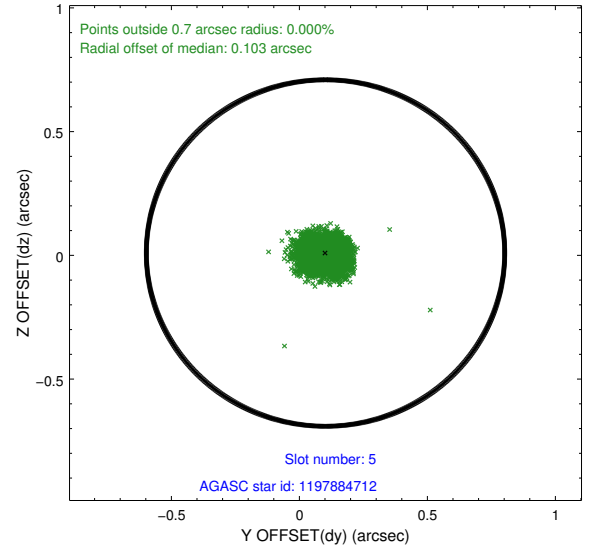
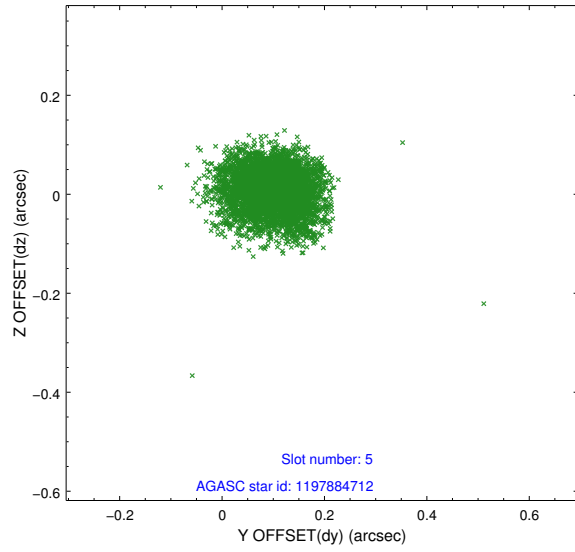
2.4.1 Slot 3



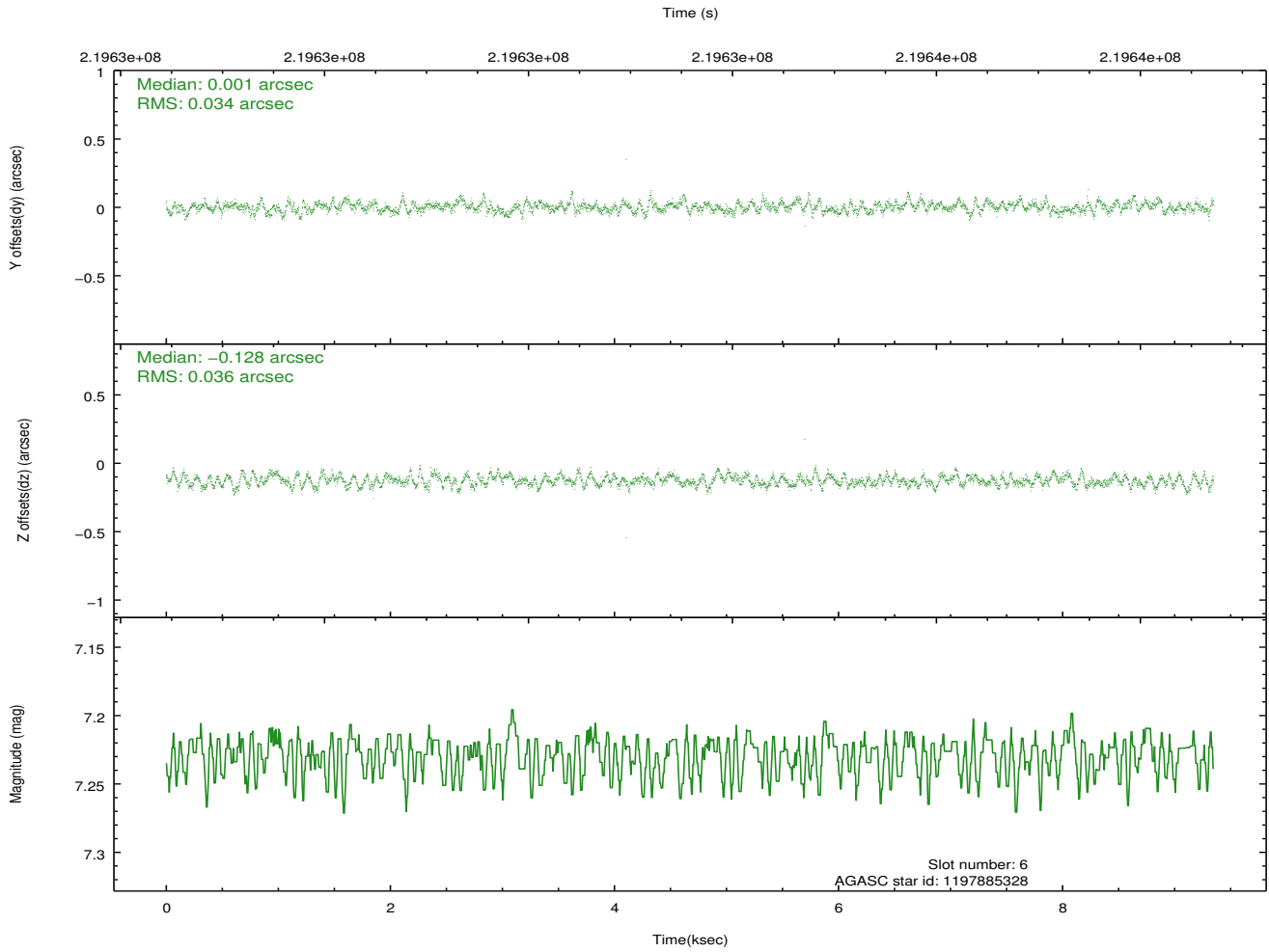
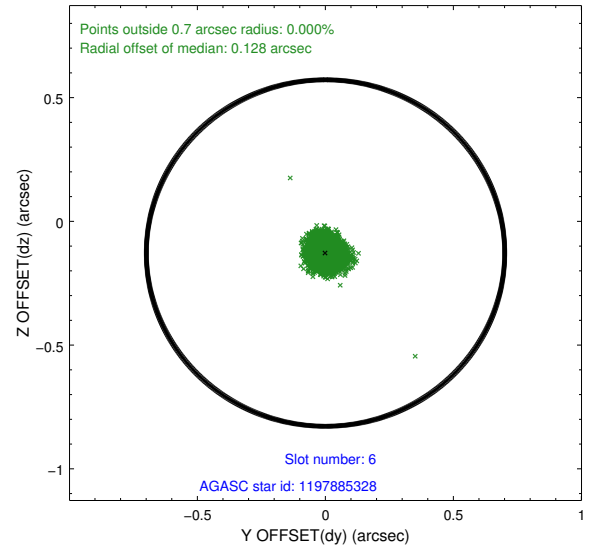
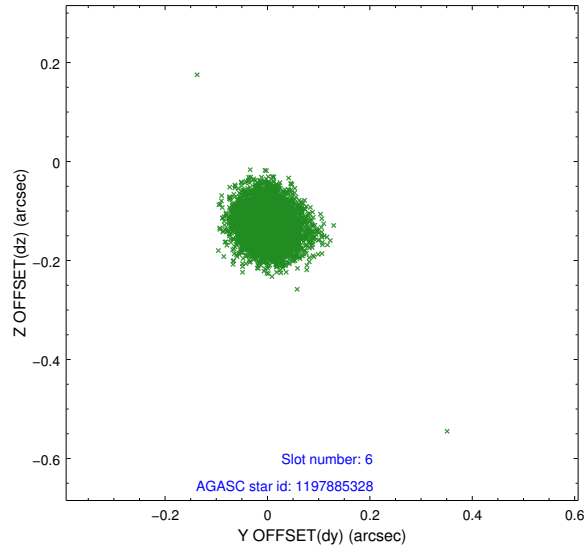
2.4.2 Slot 4



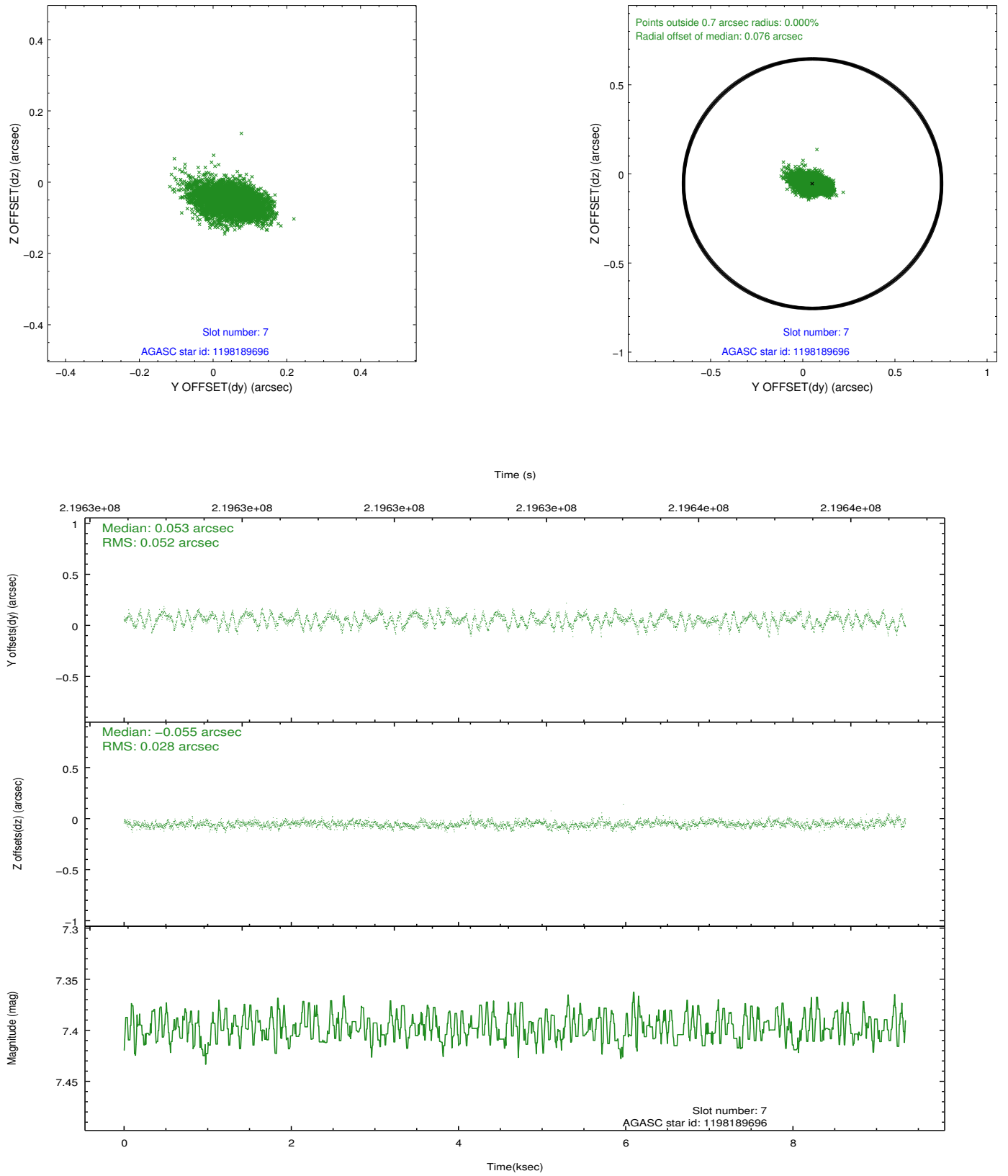
2.4.3 Slot 5



2.4.4 Slot 6

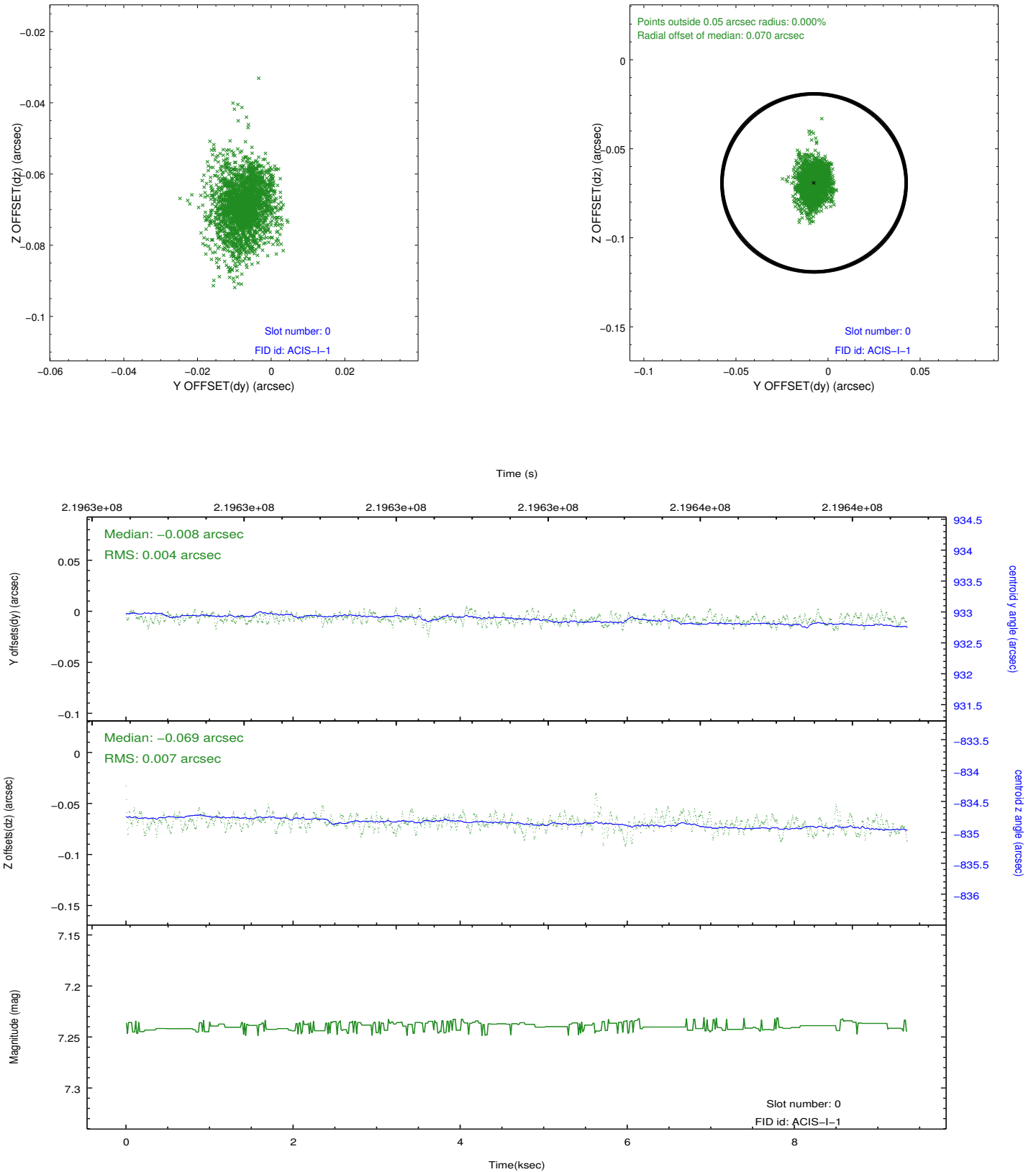


2.4.5 Slot 7

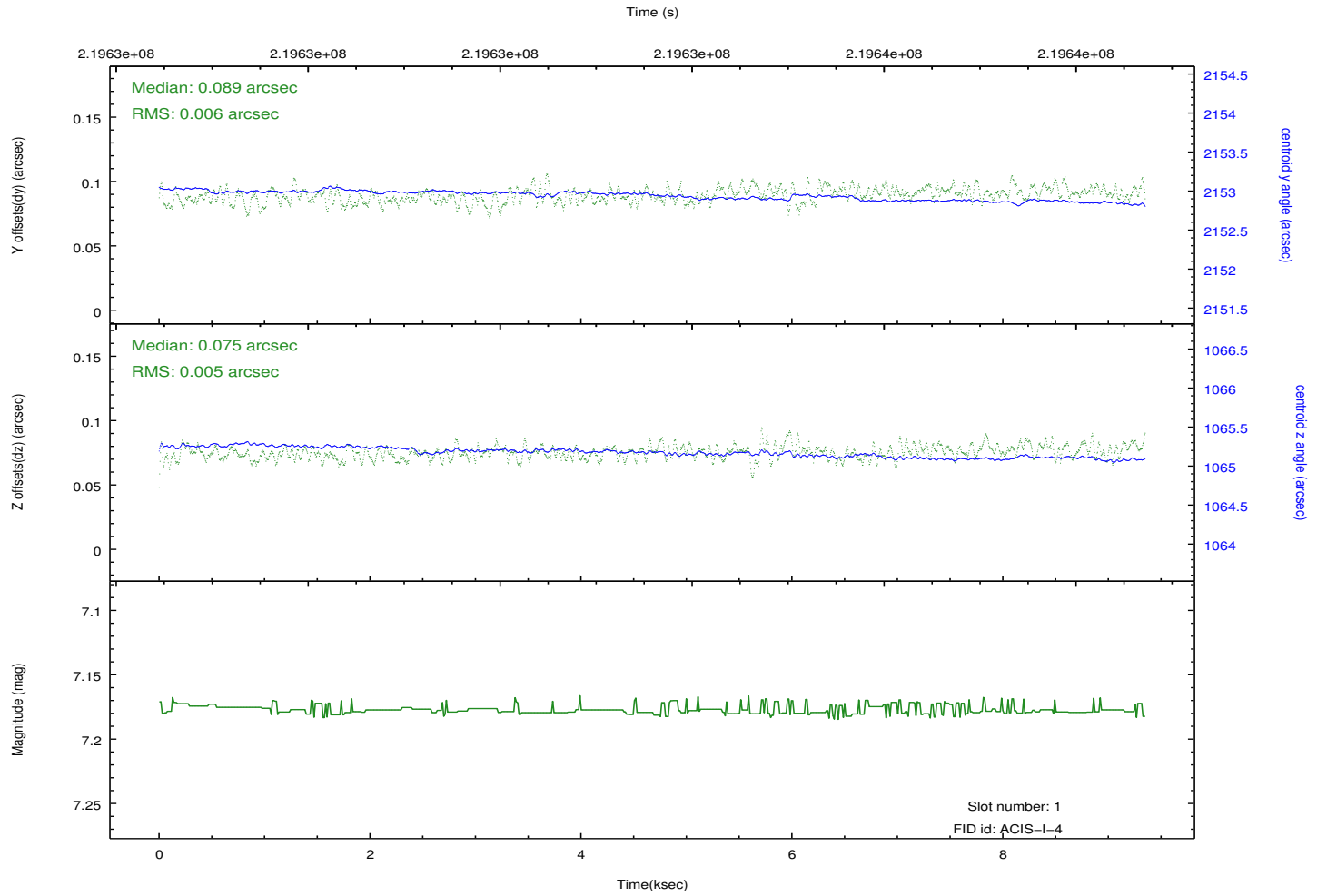
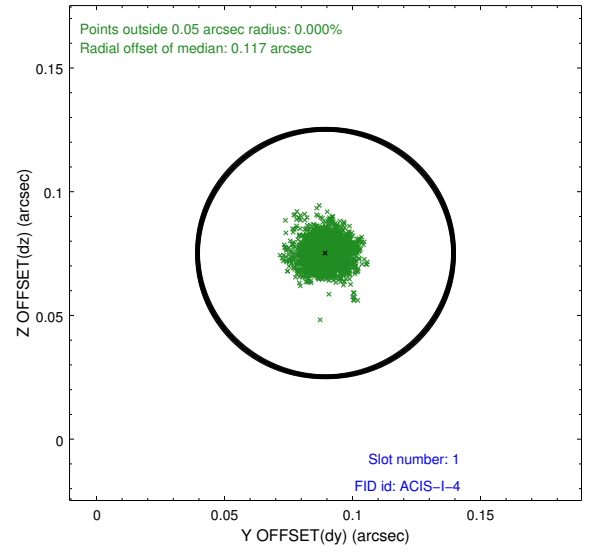
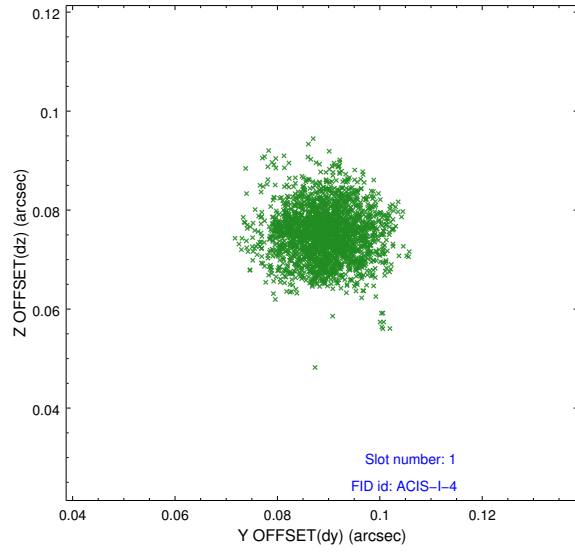


2.5 FID Slots

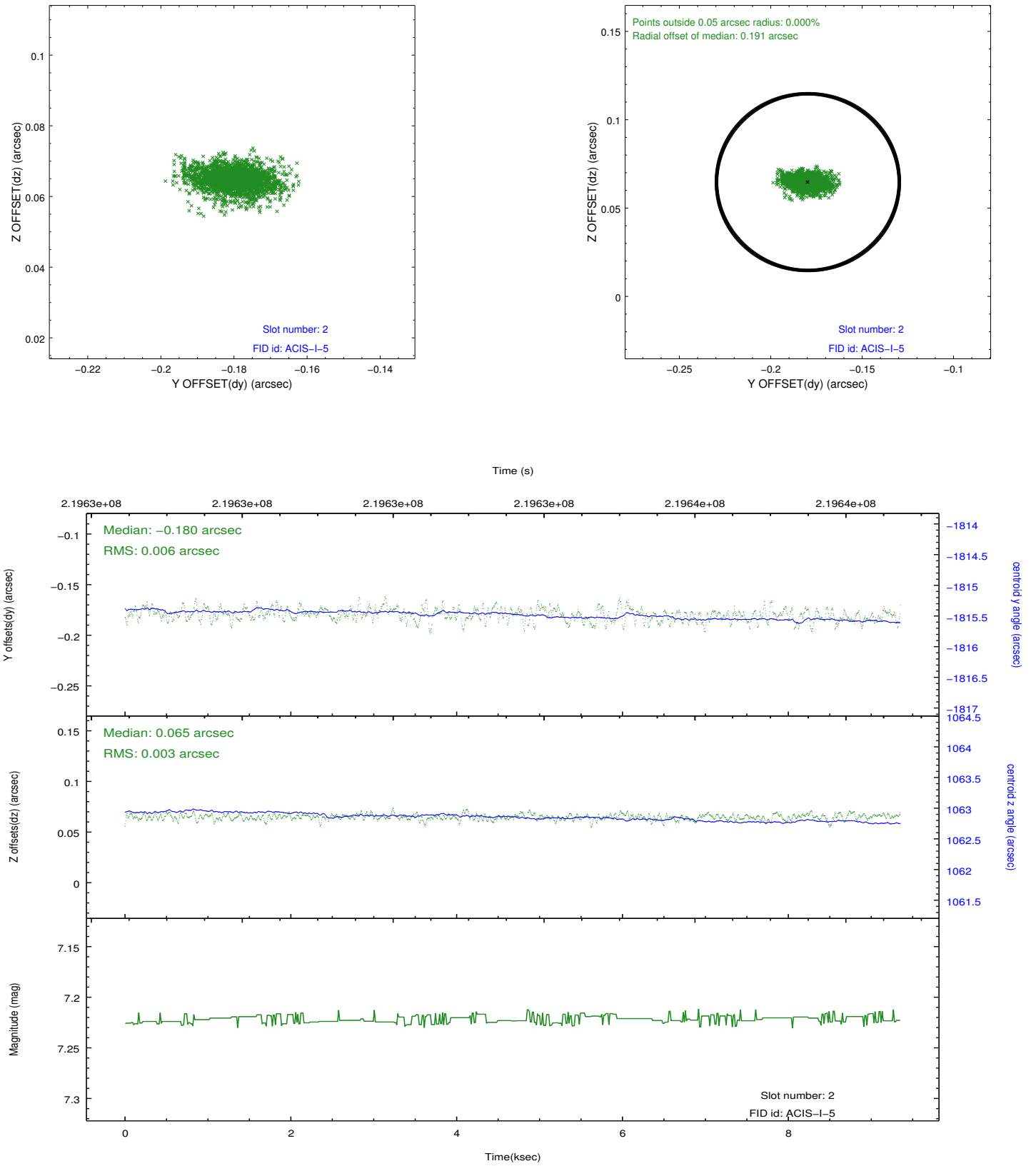
2.5.1 Slot 0



2.5.2 Slot 1



2.5.3 Slot 2



A Summary

A.1 Status

V&V Scientist	Jen Lauer
V&V Date (YYYY-MM-DD)	2013.01.04
V&V Edition	1
V&V Disposition and Status	OK
V&V Charge Time	7.955199

A.2 Comments

Window constraint satisfied.