

# V&V Reference Report

## L2 ASCDS Version : 7.6.8

Observation 60475 - L2 Version 001  
Chandra X-Ray Center

L2 Processing Date : Jun 26 2006

## Contents

<b>1</b>	<b>Front</b>	<b>2</b>
<b>2</b>	<b>OBI</b>	<b>3</b>
2.1	OBI . . . . .	3
2.1.1	Images . . . . .	3
2.1.2	Bias . . . . .	3
2.1.3	Parameters . . . . .	4
2.1.4	Events . . . . .	4
2.2	Compared Parameters . . . . .	5
2.3	Aspect . . . . .	6
2.4	Star Slots . . . . .	8
2.5	FID Slots . . . . .	8
<b>A</b>	<b>Summary</b>	<b>9</b>
A.1	Status . . . . .	9
A.2	Comments . . . . .	9

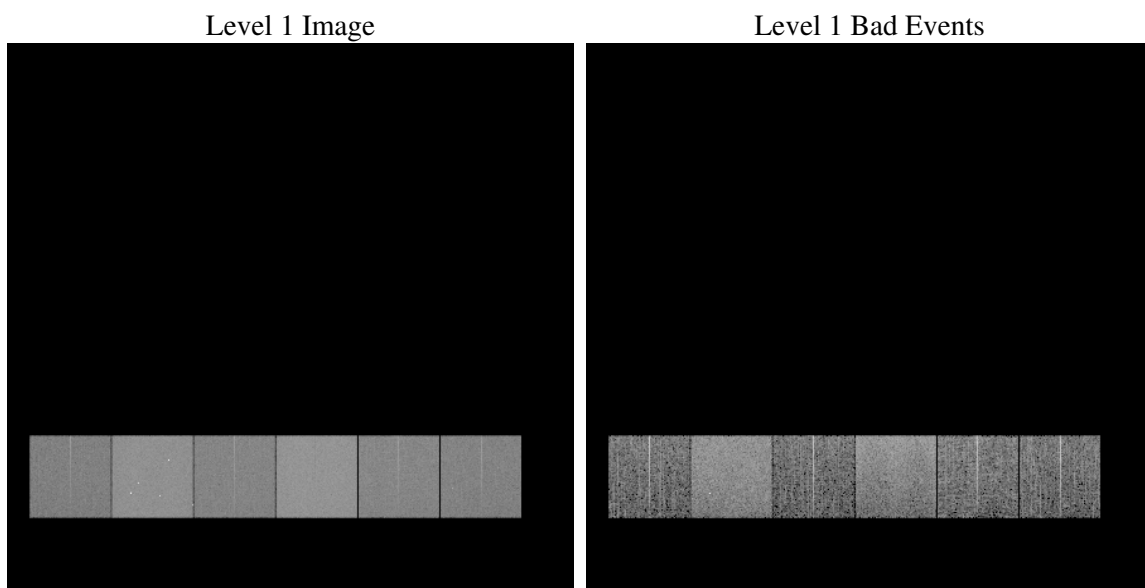
# 1 Front

seq_num	&#160
obs_id	60475
title	ACIS-456789 diagnostics
observer	CHANDRA engineering request/realtime commanding
object	&#160
dtcycle	0
cycle	P
ra_targ	0.0
dec_targ	0.0
ra_nom	130.25492752068
dec_nom	36.105857728371
roll_nom	82.372099515116
revision	2
ontime	8460.7999684811
livetime	8353.664224798
ontime4	5028.6074165702
ontime5	8460.7999684811
ontime6	5472.6224759221
ontime7	8460.7999684811
ontime8	5550.4064605236
ontime9	5243.3856275082
l2events	1251248

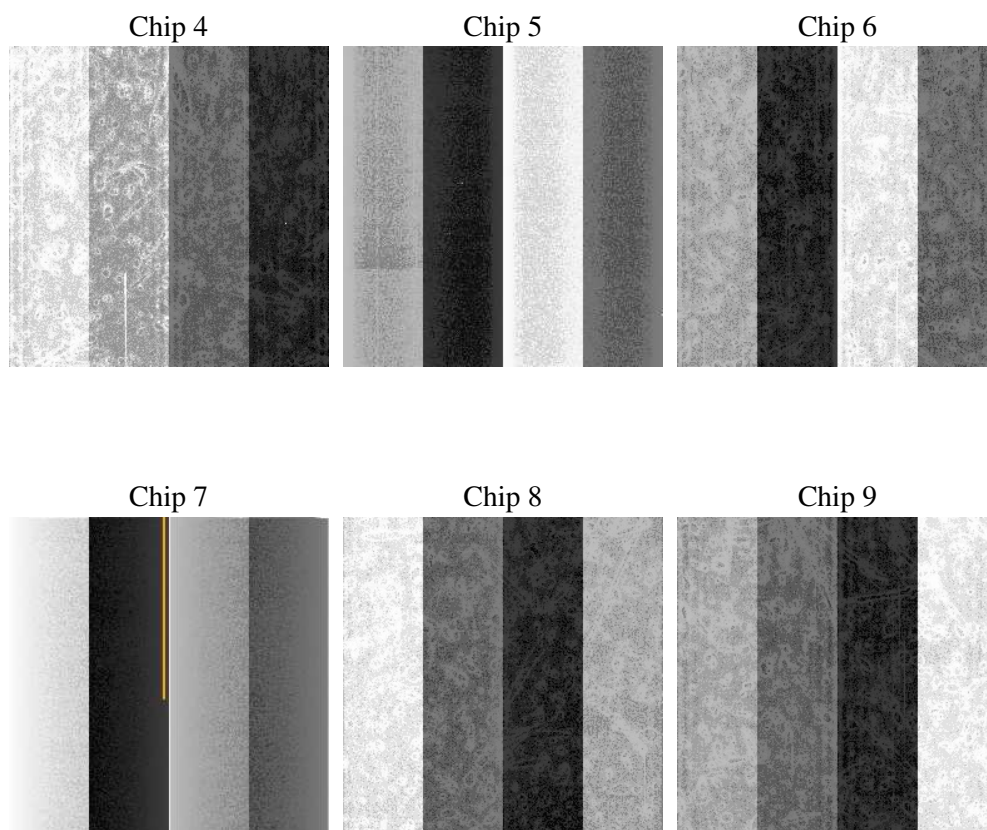
## 2 OBI

### 2.1 OBI

#### 2.1.1 Images



#### 2.1.2 Bias



### 2.1.3 Parameters

obi_num	0
ascdsver	7.6.8
caldsver	3.2.2
date	2006-06-27T01:42:34
revision	2

sched_exp_time	0.0
ontime	8465.5008767247
ontime4	5033.3083547056
ontime5	8468.7418769002
ontime6	5477.3234140575
ontime7	8465.5008767247
ontime8	5555.107398659
ontime9	5247.2139670849
l1events	1536237

### 2.1.4 Events

	ccd 4	ccd 5	ccd 6	ccd 7	ccd 8	ccd 9
level 1 events	199397	315796	227302	341949	237588	214205
rejected events	28481	52424	27275	46858	32263	28562
rejected %	14%	16%	11%	13%	13%	13%

	ccd 4	ccd 5	ccd 6	ccd 7	ccd 8	ccd 9
grade 0 events	99833	32381	109519	52515	113174	102714
	50%	10%	48%	15%	47%	47%
grade 1 events	552	122	436	129	493	482
	0%	0%	0%	0%	0%	0%
grade 2 events	27127	126875	34379	90434	35844	32023
	13%	40%	15%	26%	15%	14%
grade 3 events	11273	8394	12485	21449	13121	11792
	5%	2%	5%	6%	5%	5%
grade 4 events	11247	8147	12280	21233	13143	11656
	5%	2%	5%	6%	5%	5%
grade 5 events	1855	5722	2045	5982	2452	2200
	0%	1%	0%	1%	1%	1%
grade 6 events	21544	87760	31485	109564	30165	27574
	10%	27%	13%	32%	12%	12%
grade 7 events	25966	46395	24673	40643	29196	25764
	13%	14%	10%	11%	12%	12%

## 2.2 Compared Parameters

Parameter	Planned	Actual	Parameter	Planned	Actual
Instrument	ACIS	ACIS	Obspar format version number	6	6
Detector	ACIS-456789	ACIS-456789	Obspar file type	PREDICTED	ACTUAL
Grating	NONE	NONE	Obspar update status	NONE	UPDATED
Data mode	FAINT	FAINT	On-chip summing requested	N	N
Observation mode	SECONDARY	SECONDARY	Subarray requested	NONE	NONE
Pointing RA	0	130.2549275206777	Alternating exposures requested	N	N
Pointing Dec	0	36.10585772837144	Primary exposure time	0.000000	3.2
Pointing Roll	0.0	82.37209951511642			
SIM focus pos (mm)	-0.684267	-0.6828225247311905			
SIM defocus (mm)	0	0.8505141146731063			
SIM translation stage pos (mm)	-190.132523	250.466033080201			
SIM translation stage offset (mm)	0	-0.01005468664627074			
Observation start time	185769061.031811	185769060.00708			
Observation start date	2003-11-21T02:31:01	2003-11-21T02:31:00			
Observation end time	185791389.63278	185791388.60804			
Observation end date	2003-11-21T08:43:10	2003-11-21T08:43:08			
Read mode	TIMED	TIMED			

## 2.3 Aspect



## 2.4 Star Slots

## 2.5 FID Slots



## A Summary

### A.1 Status

V&V Scientist	Jen Lauer
V&V Date (YYYY-MM-DD)	2006.06.27
V&V Edition	1
V&V Disposition and Status	OK
V&V Charge Time	8.46079996

### A.2 Comments