

# V&V Reference Report

## L2 ASCDS Version : 8.4.5

Observation 60455 - L2 Version 3  
Chandra X-Ray Center

L2 Processing Date : Nov 9 2012

## Contents

<b>1</b>	<b>Front</b>	<b>2</b>
<b>2</b>	<b>OBI</b>	<b>3</b>
2.1	OBI . . . . .	3
2.1.1	Images . . . . .	3
2.1.2	Bias . . . . .	3
2.1.3	Parameters . . . . .	4
2.1.4	Events . . . . .	4
2.2	Compared Parameters . . . . .	5
2.3	Star Slots . . . . .	6
2.4	FID Slots . . . . .	6
<b>A</b>	<b>Summary</b>	<b>7</b>
A.1	Status . . . . .	7
A.2	Comments . . . . .	7

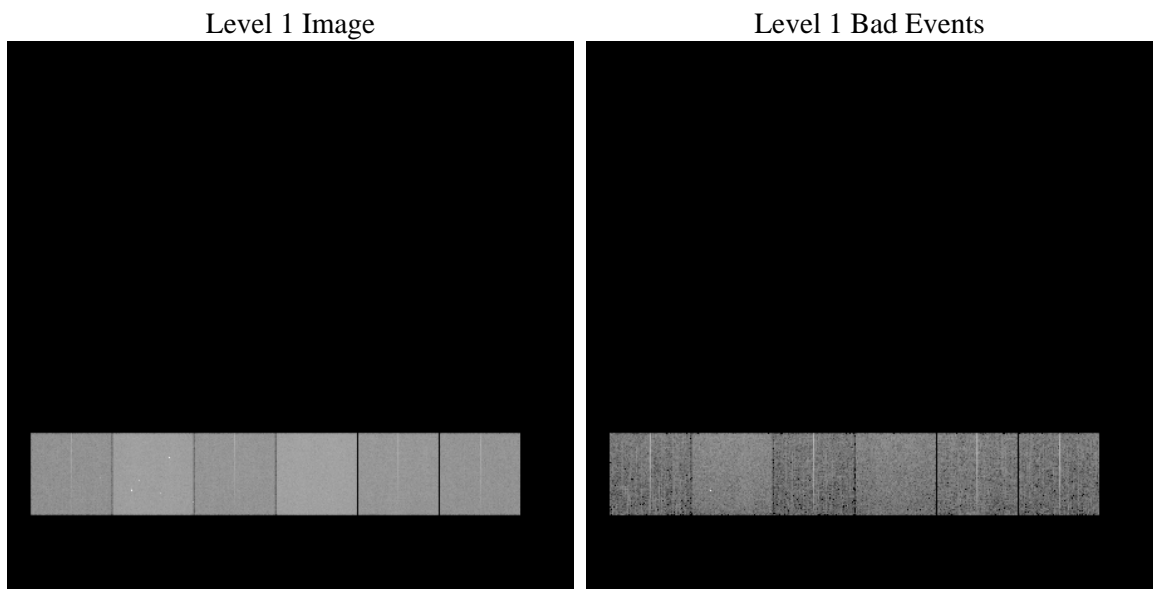
# 1 Front

seq_num	&#160	Sequence number
obs_id	60455	Observation id
title	ACIS-456789 diagnostics	Proposal title
observer	CHANDRA engineering request/realtime commanding	Principal investig
object	&#160	Source name
dtcycle	0	&#160
cycle	P	events from which exps? Prim/Second/Both
ra_targ	0.0	Observer's specified target RA [deg]
dec_targ	0.0	Observer's specified target Dec [deg]
ra_nom	133.19906147173	Nominal RA [deg]
dec_nom	-6.6713957942335	Nominal Dec [deg]
roll_nom	58.967641920159	Nominal Roll [deg]
revision	3	Processing version of data
ontime	8463.9999684691	Sum of GTIs [s]
livetime	8356.8237044595	Livetime [s]
ontime4	4882.7198260427	Sum of GTIs [s]
ontime5	8463.9999684691	Sum of GTIs [s]
ontime6	5353.7764906883	Sum of GTIs [s]
ontime7	8463.9999684691	Sum of GTIs [s]
ontime8	5479.0612468719	Sum of GTIs [s]
ontime9	5213.3005486727	Sum of GTIs [s]
l2events	1239027	Number of level 2 events

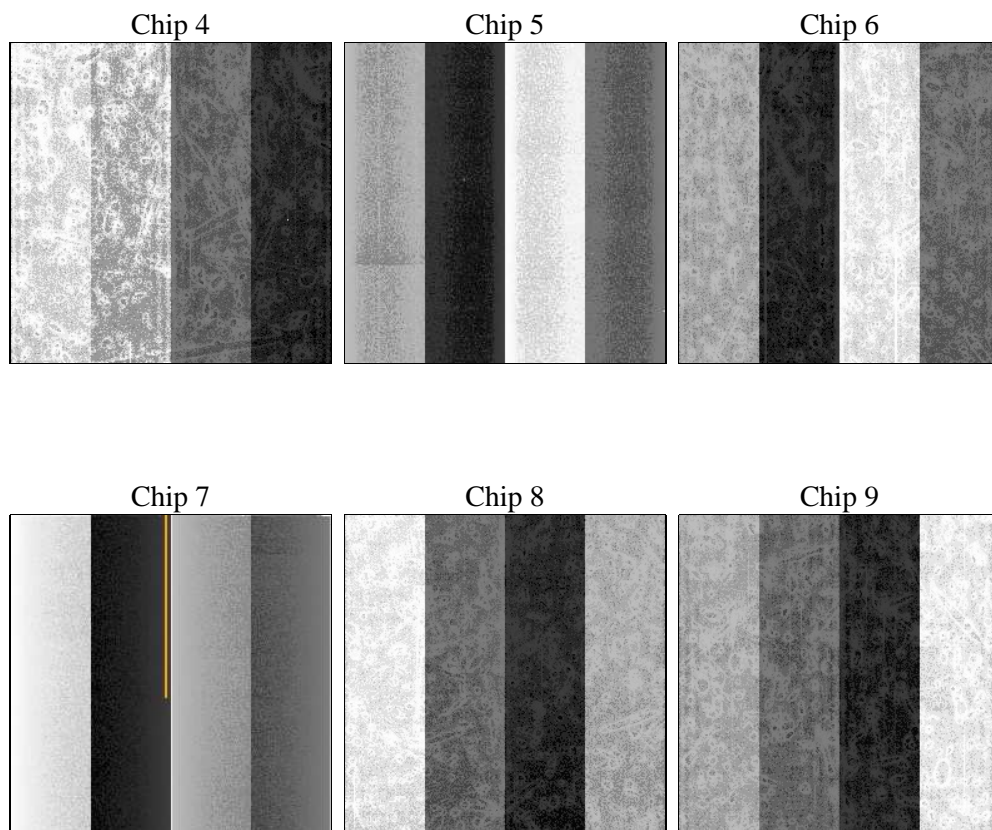
## 2 OBI

### 2.1 OBI

#### 2.1.1 Images



#### 2.1.2 Bias



### 2.1.3 Parameters

obi_num	0	Obi number	sched_exp_time	0.0	[s] Scheduled observation exposure time
ascdsver	8.4.5	Processing system revision	ontime	8463.9999684691	Sum of GTIs [s]
caldsver	4.5.2	&#160	ontime4	4882.7198260427	Sum of GTIs [s]
date	2012-11-09T06:43:08	Date and time of file creation	ontime5	8463.9999684691	Sum of GTIs [s]
revision	3	Processing version of data	ontime6	5353.7764906883	Sum of GTIs [s]
			ontime7	8463.9999684691	Sum of GTIs [s]
			ontime8	5479.0612468719	Sum of GTIs [s]
			ontime9	5213.3005486727	Sum of GTIs [s]
			l1events	1535244	Number of level 1 events

### 2.1.4 Events

	ccd 4	ccd 5	ccd 6	ccd 7	ccd 8	ccd 9		ccd 4	ccd 5	ccd 6	ccd 7	ccd 8	ccd 9
level 1 events	195295	322223	222914	346781	237345	210686	grade 0 events	94502	61998	104901	75836	109640	98999
rejected events	33082	51625	31642	41918	37781	31956		48%	19%	47%	21%	46%	46%
rejected %	16%	16%	14%	12%	15%	15%	grade 1 events	617	221	478	203	488	520
								0%	0%	0%	0%	0%	0%
							grade 2 events	25968	99168	32623	67303	34902	30778
								13%	30%	14%	19%	14%	14%
							grade 3 events	10708	15883	11906	30581	12771	11336
								5%	4%	5%	8%	5%	5%
							grade 4 events	10598	16006	11808	30531	12728	11345
								5%	4%	5%	8%	5%	5%
							grade 5 events	2147	8981	2264	7817	2744	2454
								1%	2%	1%	2%	1%	1%
							grade 6 events	20437	77543	30034	100612	29523	26272
								10%	24%	13%	29%	12%	12%
							grade 7 events	30318	42423	28900	33898	34549	28982
								15%	13%	12%	9%	14%	13%

## 2.2 Compared Parameters

Parameter	Planned	Actual	Parameter	Planned	Actual
Instrument	ACIS	ACIS	Obspar format version number	7	7
Detector	ACIS-456789	ACIS-456789	Obspar file type	PREDICTED	ACTUAL
Grating	NONE	NONE	Obspar update status	NONE	UPDATED
Data mode	FAINT	FAINT	On-chip summing requested	N	N
Observation mode	SECONDARY	SECONDARY	Subarray requested	NONE	NONE
[deg] Pointing RA	0	133.1990614717288	Alternating exposures requested	N	N
[deg] Pointing Dec	0	-6.671395794233473	[s] Primary exposure time	0.000000	3.2
[deg] Pointing Roll	0.0	58.96764192015888			
[mm] SIM focus pos	-0.684267	-0.6828225247311905			
[mm] SIM defocus	0	0.8505141146731063			
[mm] SIM translation stage pos	-190.132523	250.466033080201			
[mm] SIM translation stage offset	0	-0.01005468664627074			
[s] Observation start time (MET)	187594485.660916	187594484.63622			
Observation start date	2003-12-12T05:34:46	2003-12-12T05:34:44			
[s] Observation end time (MET)	187617412.86191	187617411.83721			
Observation end date	2003-12-12T11:56:53	2003-12-12T11:56:51			
Read mode	TIMED	TIMED			

## **2.3 Star Slots**

## **2.4 FID Slots**

## A Summary

### A.1 Status

V&V Scientist	Beth Sundheim
V&V Date (YYYY-MM-DD)	2012.12.14
V&V Edition	1
V&V Disposition and Status	OK
V&V Charge Time	8.4639999684691

### A.2 Comments