

# V&V Reference Report

## L2 ASCDS Version : 8.4.5

Observation 60385 - L2 Version 3  
Chandra X-Ray Center

L2 Processing Date : Nov 11 2012

## Contents

<b>1</b>	<b>Front</b>	<b>2</b>
<b>2</b>	<b>OBI</b>	<b>3</b>
2.1	OBI . . . . .	3
2.1.1	Images . . . . .	3
2.1.2	Bias . . . . .	3
2.1.3	Parameters . . . . .	4
2.1.4	Events . . . . .	4
2.2	Compared Parameters . . . . .	5
2.3	Star Slots . . . . .	6
2.4	FID Slots . . . . .	6
<b>A</b>	<b>Summary</b>	<b>7</b>
A.1	Status . . . . .	7
A.2	Comments . . . . .	7

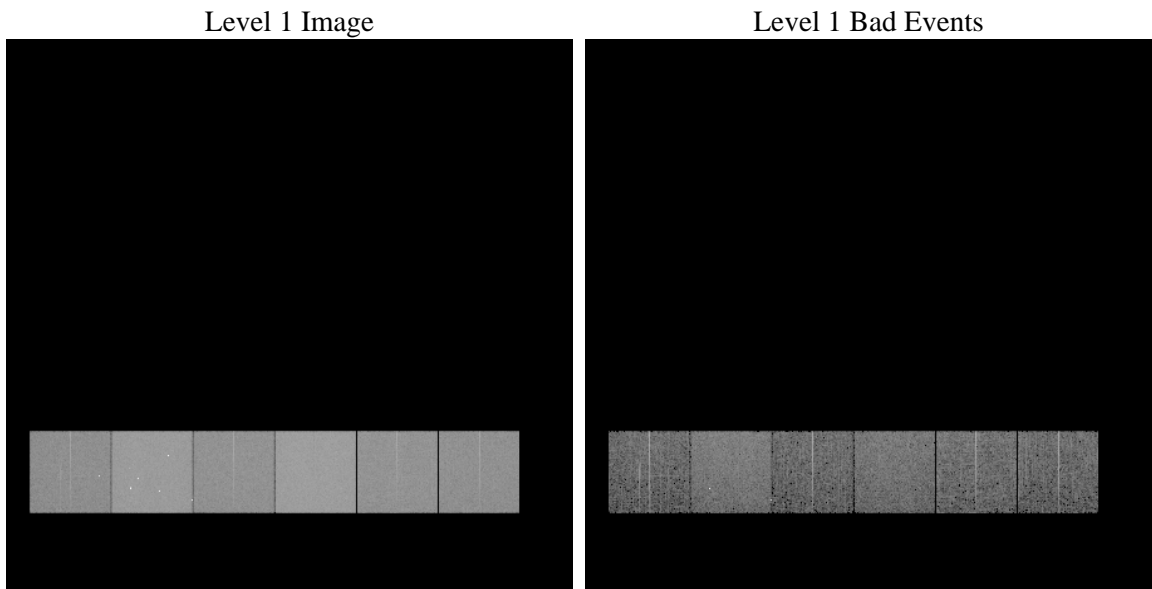
# 1 Front

seq_num	&#160	Sequence number
obs_id	60385	Observation id
title	ACIS-456789 diagnostics	Proposal title
observer	CHANDRA engineering request/realtime commanding	Principal investig
object	&#160	Source name
dtcycle	0	&#160
cycle	P	events from which exps? Prim/Second/Both
ra_targ	0.0	Observer's specified target RA [deg]
dec_targ	0.0	Observer's specified target Dec [deg]
ra_nom	168.97709385221	Nominal RA [deg]
dec_nom	26.019897369292	Nominal Dec [deg]
roll_nom	103.03012436569	Nominal Roll [deg]
revision	3	Processing version of data
ontime	7801.5620352924	Sum of GTIs [s]
livetime	7702.7739592648	Livetime [s]
ontime4	4728.6520338356	Sum of GTIs [s]
ontime5	7801.5209952891	Sum of GTIs [s]
ontime6	5143.4978329837	Sum of GTIs [s]
ontime7	7801.5620352924	Sum of GTIs [s]
ontime8	5192.113383323	Sum of GTIs [s]
ontime9	4978.20495525	Sum of GTIs [s]
l2events	1124922	Number of level 2 events

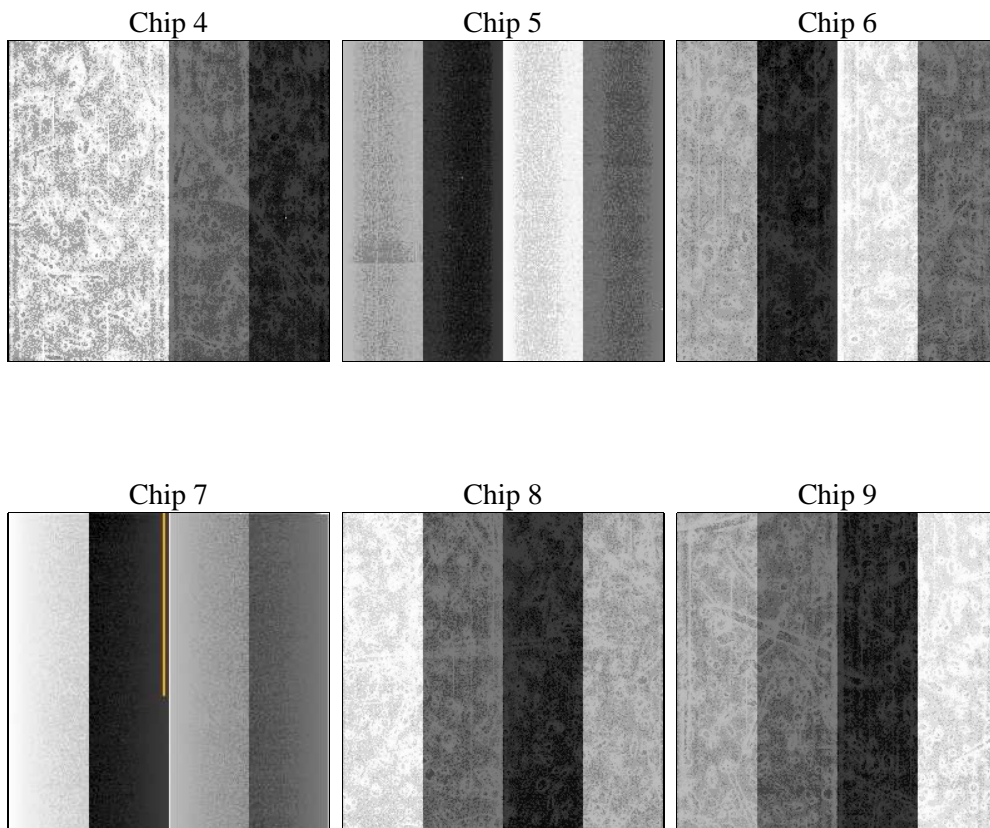
## 2 OBI

### 2.1 OBI

#### 2.1.1 Images



#### 2.1.2 Bias



### 2.1.3 Parameters

obi_num	0	Obi number	sched_exp_time	0.0	[s] Scheduled observation exposure time
ascdsver	8.4.5	Processing system revision	ontime	7801.5620352924	Sum of GTIs [s]
caldsver	4.5.2	&#160	ontime4	4728.6520338356	Sum of GTIs [s]
date	2012-11-11T14:07:01	Date and time of file creation	ontime5	7801.5209952891	Sum of GTIs [s]
revision	3	Processing version of data	ontime6	5143.4978329837	Sum of GTIs [s]
			ontime7	7801.5620352924	Sum of GTIs [s]
			ontime8	5192.113383323	Sum of GTIs [s]
			ontime9	4978.20495525	Sum of GTIs [s]
			l1events	1416600	Number of level 1 events

### 2.1.4 Events

	ccd 4	ccd 5	ccd 6	ccd 7	ccd 8	ccd 9		ccd 4	ccd 5	ccd 6	ccd 7	ccd 8	ccd 9
level 1 events	183090	298291	207629	314377	217133	196080	grade 0 events	88858	56482	96454	67650	99521	90978
rejected events	31596	51508	31256	40351	36297	31768		48%	18%	46%	21%	45%	46%
rejected %	17%	17%	15%	12%	16%	16%	grade 1 events	566	394	454	178	485	461
								0%	0%	0%	0%	0%	0%
							grade 2 events	23887	90681	30469	60475	31481	27938
								13%	30%	14%	19%	14%	14%
							grade 3 events	10062	13927	10927	27498	11581	10550
								5%	4%	5%	8%	5%	5%
							grade 4 events	9816	13779	10870	27501	11600	10504
								5%	4%	5%	8%	5%	5%
							grade 5 events	2074	8892	2266	7460	2651	2280
								1%	2%	1%	2%	1%	1%
							grade 6 events	18871	72013	27653	91013	26653	24342
								10%	24%	13%	28%	12%	12%
							grade 7 events	28956	42123	28536	32602	33161	29027
								15%	14%	13%	10%	15%	14%

## 2.2 Compared Parameters

Parameter	Planned	Actual	Parameter	Planned	Actual
Instrument	ACIS	ACIS	Obspar format version number	7	7
Detector	ACIS-456789	ACIS-456789	Obspar file type	PREDICTED	ACTUAL
Grating	NONE	NONE	Obspar update status	NONE	UPDATED
Data mode	FAINT	FAINT	On-chip summing requested	N	N
Observation mode	SECONDARY	SECONDARY	Subarray requested	NONE	NONE
[deg] Pointing RA	0	168.9770938522053	Alternating exposures requested	N	N
[deg] Pointing Dec	0	26.01989736929159	[s] Primary exposure time	0.000000	3.2
[deg] Pointing Roll	0.0	103.0301243656932			
[mm] SIM focus pos	-0.684267	-0.6828225247311905			
[mm] SIM defocus	0	0.8505141146731063			
[mm] SIM translation stage pos	-190.132523	250.466033080201			
[mm] SIM translation stage offset	0	-0.01005468664627074			
[s] Observation start time (MET)	192357002.818379	192357001.79365			
Observation start date	2004-02-05T08:30:03	2004-02-05T08:30:01			
[s] Observation end time (MET)	192374198.219131	192374197.1944			
Observation end date	2004-02-05T13:16:38	2004-02-05T13:16:37			
Read mode	TIMED	TIMED			

## 2.3 Star Slots

## 2.4 FID Slots

## A Summary

### A.1 Status

V&V Scientist	Beth Sundheim
V&V Date (YYYY-MM-DD)	2012.12.11
V&V Edition	1
V&V Disposition and Status	OK
V&V Charge Time	7.8015620352924

### A.2 Comments