

V&V Reference Report

L2 ASCDS Version : 7.6.7.2

Observation 60345 - L2 Version 001
Chandra X-Ray Center

L2 Processing Date : May 31 2006

Contents

1	Front	2
2	OBI	3
2.1	OBI	3
2.1.1	Images	3
2.1.2	Bias	3
2.1.3	Parameters	4
2.1.4	Events	4
2.2	Compared Parameters	5
2.3	Aspect	6
2.4	Star Slots	8
2.5	FID Slots	8
A	Summary	9
A.1	Status	9
A.2	Comments	9

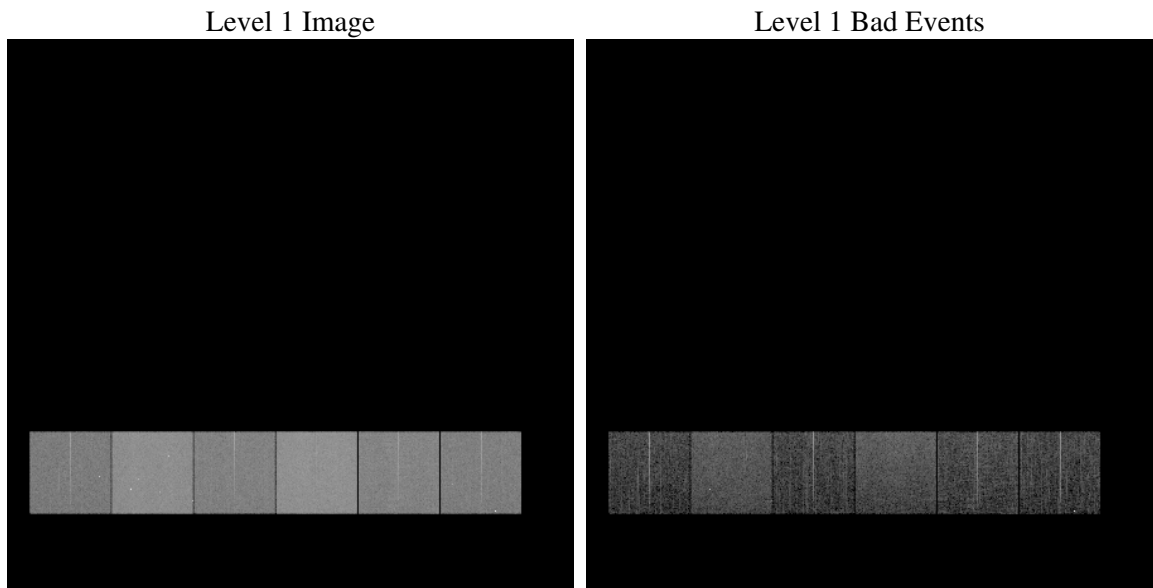
1 Front

seq_num	
obs_id	60345
title	ACIS-456789 diagnostics
observer	CHANDRA engineering request/realtime commanding
object	
dtcycle	0
cycle	P
ra_targ	0.0
dec_targ	0.0
ra_nom	138.01670921429
dec_nom	3.9767660926502
roll_nom	272.75832160226
revision	2
ontime	7798.3999709487
livetime	7699.6519348838
ontime4	4639.5237872005
ontime5	7798.3999709487
ontime6	5137.5532897115
ontime7	7798.3999709487
ontime8	5289.8792735934
ontime9	4946.3348064721
l2events	1091392

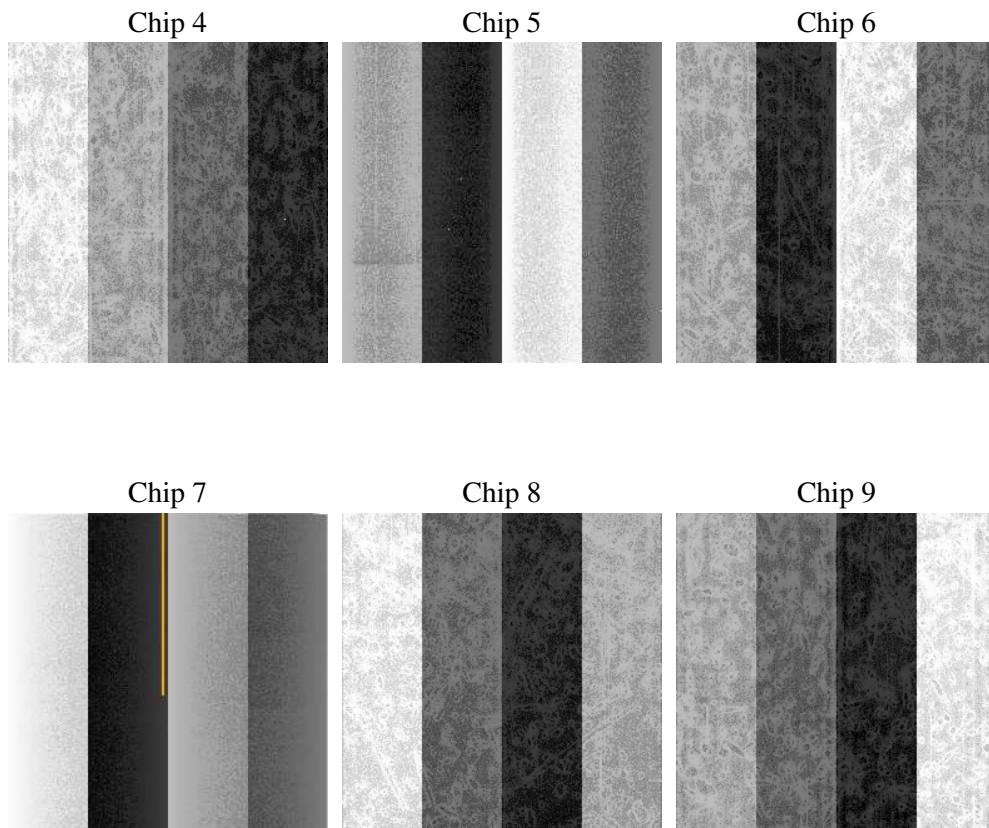
2 OBI

2.1 OBI

2.1.1 Images



2.1.2 Bias



2.1.3 Parameters

obi_num	0
ascdsver	7.6.7.2
caldbver	3.2.2
date	2006-05-31T21:40:07
revision	2

sched_exp_time	0.0
ontime	7801.1083520055
ontime4	4641.1492647827
ontime5	7801.1083520055
ontime6	5140.2616707683
ontime7	7801.1083520055
ontime8	5292.5876546502
ontime9	4949.0431875288
l1events	1414715

2.1.4 Events

	ccd 4	ccd 5	ccd 6	ccd 7	ccd 8	ccd 9
level 1 events	179580	293071	209553	313468	222654	196389
rejected events	35638	58727	36253	54619	41172	36899
rejected %	19%	20%	17%	17%	18%	18%

	ccd 4	ccd 5	ccd 6	ccd 7	ccd 8	ccd 9
grade 0 events	84230	27872	94817	45099	99075	88298
	46%	9%	45%	14%	44%	44%
grade 1 events	604	432	416	132	493	1955
	0%	0%	0%	0%	0%	0%
grade 2 events	22386	109857	30022	79154	31660	27171
	12%	37%	14%	25%	14%	13%
grade 3 events	9439	8006	10683	18860	11837	10114
	5%	2%	5%	6%	5%	5%
grade 4 events	9679	7621	10732	18333	11798	10169
	5%	2%	5%	5%	5%	5%
grade 5 events	2054	6011	2457	6480	2965	2520
	1%	2%	1%	2%	1%	1%
grade 6 events	18309	81061	27166	97520	27112	23854
	10%	27%	12%	31%	12%	12%
grade 7 events	32879	52211	33260	47890	37714	32308
	18%	17%	15%	15%	16%	16%

2.2 Compared Parameters

Parameter	Planned	Actual	Parameter	Planned	Actual
Instrument	ACIS	ACIS	Obspar format version number	6	6
Detector	ACIS-456789	ACIS-456789	Obspar file type	PREDICTED	ACTUAL
Grating	NONE	NONE	Obspar update status	NONE	UPDATED
Data mode	FAINT	FAINT	On-chip summing requested	N	N
Observation mode	SECONDARY	SECONDARY	Subarray requested	NONE	NONE
Pointing RA	0	138.0167092142889	Alternating exposures requested	N	N
Pointing Dec	0	3.976766092650188	Primary exposure time	0.000000	3.2
Pointing Roll	0.0	272.7583216022619			
SIM focus pos (mm)	-0.684267	-0.6828225247311905			
SIM defocus (mm)	0	0.8505141146731063			
SIM translation stage pos (mm)	-190.132523	250.4635187648994			
SIM translation stage offset (mm)	0	-0.007540371344731511			
Observation start time	195101214.938485	195101213.91378			
Observation start date	2004-03-08T02:46:55	2004-03-08T02:46:53			
Observation end time	195140353.540202	195140352.5155			
Observation end date	2004-03-08T13:39:14	2004-03-08T13:39:12			
Read mode	TIMED	TIMED			

2.3 Aspect

2.4 Star Slots

2.5 FID Slots

A Summary

A.1 Status

V&V Scientist	Jen Lauer
V&V Date (YYYY-MM-DD)	2006.06.01
V&V Edition	1
V&V Disposition and Status	OK
V&V Charge Time	7.79839997

A.2 Comments

The ACIS focal plane temperature is above calibration limits for the first 3 ksec of the observation.