

# V&V Reference Report

## L2 ASCDS Version : 7.6.7.2

Observation 60335 - L2 Version 001  
Chandra X-Ray Center

L2 Processing Date : May 29 2006

## Contents

<b>1</b>	<b>Front</b>	<b>2</b>
<b>2</b>	<b>OBI</b>	<b>3</b>
2.1	OBI . . . . .	3
2.1.1	Images . . . . .	3
2.1.2	Bias . . . . .	3
2.1.3	Parameters . . . . .	4
2.1.4	Events . . . . .	4
2.2	Compared Parameters . . . . .	5
2.3	Aspect . . . . .	6
2.4	Star Slots . . . . .	8
2.5	FID Slots . . . . .	8
<b>A</b>	<b>Summary</b>	<b>9</b>
A.1	Status . . . . .	9
A.2	Comments . . . . .	9

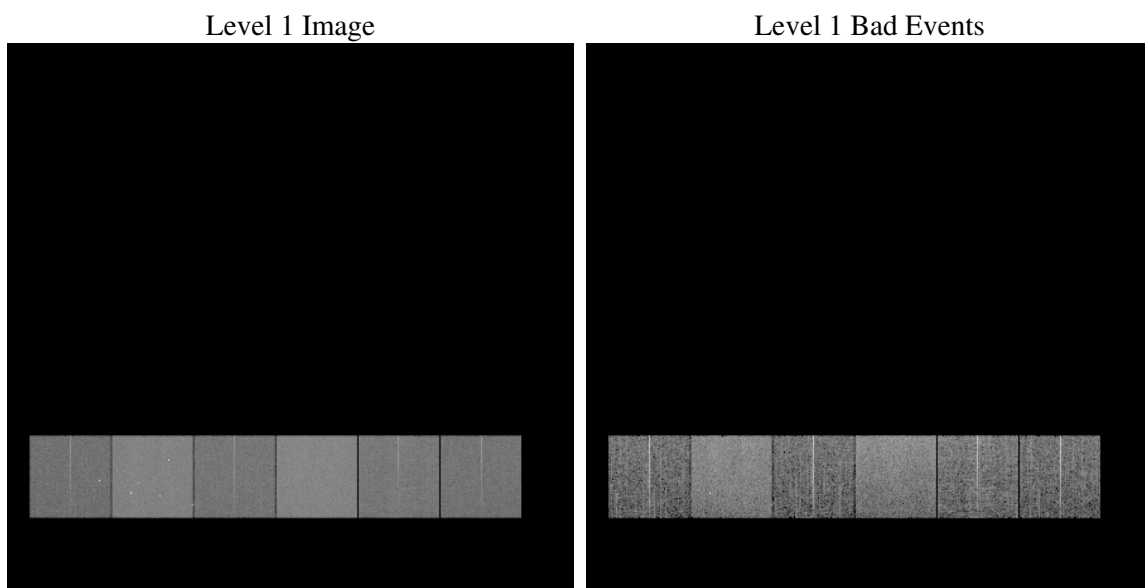
# 1 Front

seq_num	&#160
obs_id	60335
title	ACIS-456789 diagnostics
observer	CHANDRA engineering request/realtime commanding
object	&#160
dtcycle	0
cycle	P
ra_targ	0.0
dec_targ	0.0
ra_nom	199.97307069094
dec_nom	17.012417450126
roll_nom	121.40388792585
revision	2
ontime	8457.5589981973
livetime	8350.4642936315
ontime4	5083.6985636353
ontime5	8454.3179980516
ontime6	5582.8102916777
ontime7	8457.5589981973
ontime8	5702.7267707288
ontime9	5404.5564077795
l2events	1180452

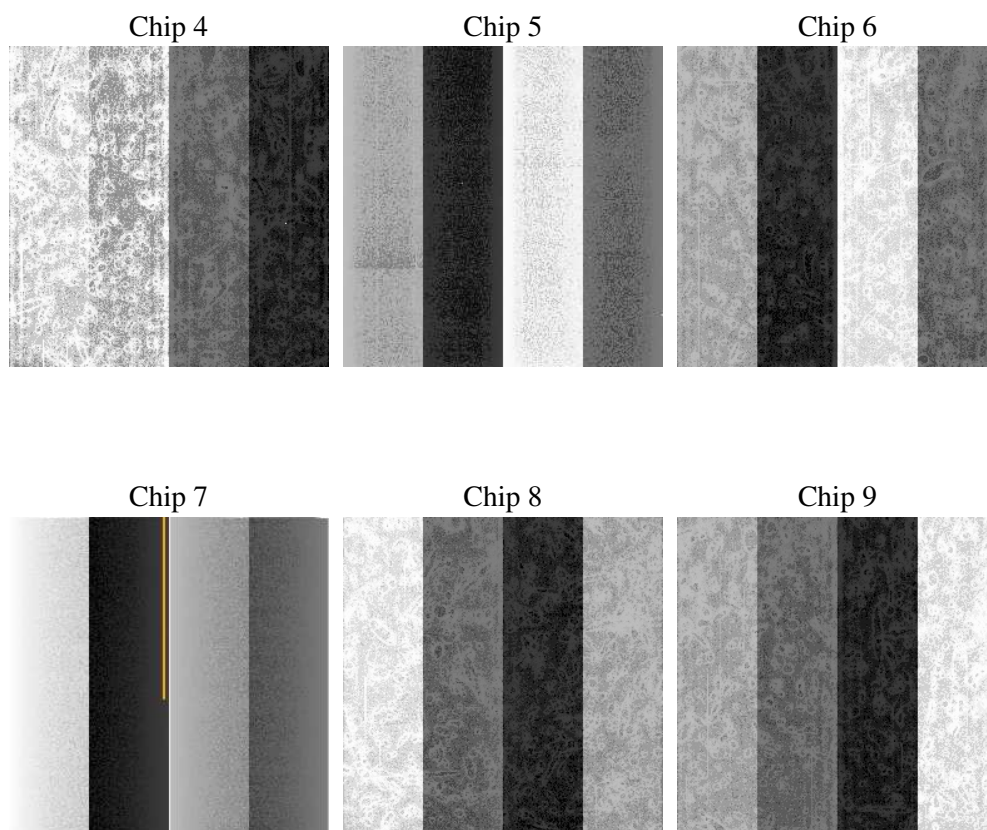
## 2 OBI

### 2.1 OBI

#### 2.1.1 Images



#### 2.1.2 Bias



### 2.1.3 Parameters

obi_num	0
ascdsver	7.6.7.2
caldsver	3.2.2
date	2006-05-29T21:10:32
revision	2

sched_exp_time	0.0
ontime	8459.0275109708
ontime4	5085.1670764089
ontime5	8455.7865108252
ontime6	5584.2788044512
ontime7	8459.0275109708
ontime8	5704.1952835023
ontime9	5406.024920553
l1events	1532549

### 2.1.4 Events

	ccd 4	ccd 5	ccd 6	ccd 7	ccd 8	ccd 9
level 1 events	196900	318966	224817	340539	239314	212013
rejected events	37940	63922	38629	59333	44803	38149
rejected %	19%	20%	17%	17%	18%	17%

	ccd 4	ccd 5	ccd 6	ccd 7	ccd 8	ccd 9
grade 0 events	92561	31389	101592	50074	106143	95997
	47%	9%	45%	14%	44%	45%
grade 1 events	620	129	538	132	511	539
	0%	0%	0%	0%	0%	0%
grade 2 events	25142	119596	31873	84131	34030	30116
	12%	37%	14%	24%	14%	14%
grade 3 events	10405	8176	11557	20900	12398	11176
	5%	2%	5%	6%	5%	5%
grade 4 events	10656	8028	11559	20183	12752	11087
	5%	2%	5%	5%	5%	5%
grade 5 events	2368	6738	2686	7285	3172	2709
	1%	2%	1%	2%	1%	1%
grade 6 events	20196	88056	29662	105918	29188	25488
	10%	27%	13%	31%	12%	12%
grade 7 events	34952	56854	35350	51916	41120	34901
	17%	17%	15%	15%	17%	16%

## 2.2 Compared Parameters

Parameter	Planned	Actual	Parameter	Planned	Actual
Instrument	ACIS	ACIS	Obspar format version number	6	6
Detector	ACIS-456789	ACIS-456789	Obspar file type	PREDICTED	ACTUAL
Grating	NONE	NONE	Obspar update status	NONE	UPDATED
Data mode	FAINT	FAINT	On-chip summing requested	N	N
Observation mode	SECONDARY	SECONDARY	Subarray requested	NONE	NONE
Pointing RA	0	199.973070690942	Alternating exposures requested	N	N
Pointing Dec	0	17.01241745012637	Primary exposure time	0.000000	3.2
Pointing Roll	0.0	121.4038879258508			
SIM focus pos (mm)	-0.684267	-1.038866356238299			
SIM defocus (mm)	0	0.4944702831659975			
SIM translation stage pos (mm)	-190.132523	250.466033080201			
SIM translation stage offset (mm)	0	-0.01005468664627074			
Observation start time	195823343.870461	195823342.84545			
Observation start date	2004-03-16T11:22:24	2004-03-16T11:22:22			
Observation end time	195847060.321502	195847059.29649			
Observation end date	2004-03-16T17:57:40	2004-03-16T17:57:39			
Read mode	TIMED	TIMED			

## 2.3 Aspect



## **2.4 Star Slots**

## **2.5 FID Slots**



## A Summary

### A.1 Status

V&V Scientist	Beth Sundheim
V&V Date (YYYY-MM-DD)	2006.05.30
V&V Edition	1
V&V Disposition and Status	OK
V&V Charge Time	8.45755899

### A.2 Comments