

V&V Reference Report

L2 ASCDS Version : 7.6.7.2

Observation 60265 - L2 Version 001
Chandra X-Ray Center

L2 Processing Date : May 22 2006

Contents

1	Front	2
2	OBI	3
2.1	OBI	3
2.1.1	Images	3
2.1.2	Bias	3
2.1.3	Parameters	4
2.1.4	Events	4
2.2	Compared Parameters	5
2.3	Aspect	6
2.4	Star Slots	8
2.5	FID Slots	8
A	Summary	9
A.1	Status	9
A.2	Comments	9

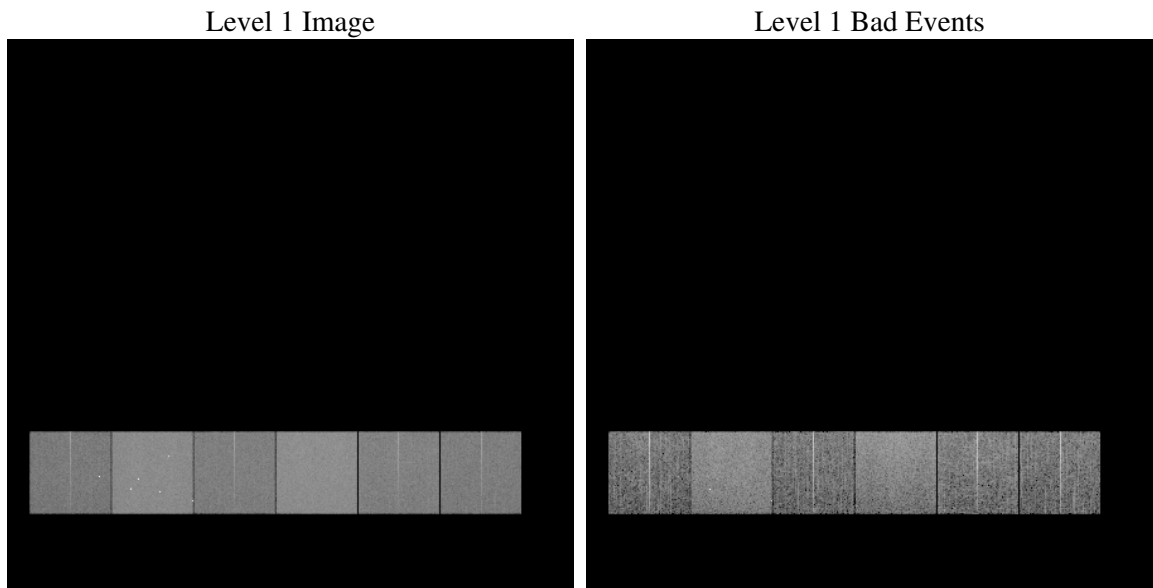
1 Front

seq_num	
obs_id	60265
title	ACIS-456789 diagnostics
observer	CHANDRA engineering request/realtime commanding
object	
dtcycle	0
cycle	P
ra_targ	0.0
dec_targ	0.0
ra_nom	223.9718094106
dec_nom	1.5051851174636
roll_nom	136.64991074814
revision	2
ontime	7971.199970305
livetime	7870.2638366006
ontime4	4885.7894861996
ontime5	7971.199970305
ontime6	5323.3224581778
ontime7	7971.199970305
ontime8	5472.4070915282
ontime9	5194.1925741732
l2events	1097834

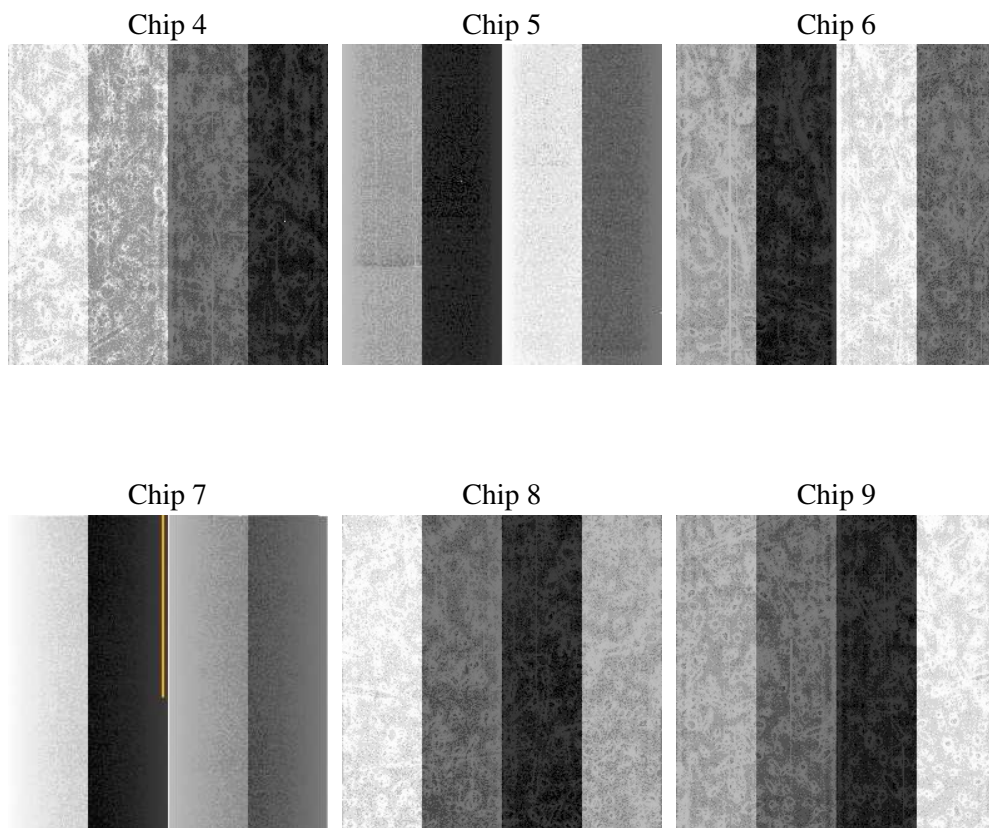
2 OBI

2.1 OBI

2.1.1 Images



2.1.2 Bias



2.1.3 Parameters

obi_num	0
ascdsver	7.6.7.2
caldbver	3.2.2
date	2006-05-22T14:04:37
revision	2

sched_exp_time	0.0
ontime	8047.4166145027
ontime4	4929.5963078439
ontime5	8047.4166145027
ontime6	5373.6113100052
ontime7	8047.4166145027
ontime8	5532.4189041257
ontime9	5253.6947219968
l1events	1458909

2.1.4 Events

	ccd 4	ccd 5	ccd 6	ccd 7	ccd 8	ccd 9
level 1 events	188387	302914	214219	319658	228775	204956
rejected events	39610	65254	40418	61187	47214	41408
rejected %	21%	21%	18%	19%	20%	20%

	ccd 4	ccd 5	ccd 6	ccd 7	ccd 8	ccd 9
grade 0 events	87546	30512	95295	44611	99587	91200
	46%	10%	44%	13%	43%	44%
grade 1 events	625	244	461	119	532	524
	0%	0%	0%	0%	0%	0%
grade 2 events	23581	110678	30278	79165	32489	28378
	12%	36%	14%	24%	14%	13%
grade 3 events	9943	7795	10873	18643	11947	10502
	5%	2%	5%	5%	5%	5%
grade 4 events	9950	7876	11103	18281	12177	10363
	5%	2%	5%	5%	5%	5%
grade 5 events	2302	6556	2643	7084	3242	2750
	1%	2%	1%	2%	1%	1%
grade 6 events	19037	83031	27817	100103	27272	24853
	10%	27%	12%	31%	11%	12%
grade 7 events	35403	56222	35749	51652	41529	36386
	18%	18%	16%	16%	18%	17%

2.2 Compared Parameters

Parameter	Planned	Actual	Parameter	Planned	Actual
Instrument	ACIS	ACIS	Obspar format version number	6	6
Detector	ACIS-456789	ACIS-456789	Obspar file type	PREDICTED	ACTUAL
Grating	NONE	NONE	Obspar update status	NONE	UPDATED
Data mode	FAINT	FAINT	On-chip summing requested	N	N
Observation mode	SECONDARY	SECONDARY	Subarray requested	NONE	NONE
Pointing RA	0	223.9718094106023	Alternating exposures requested	N	N
Pointing Dec	0	1.505185117463599	Primary exposure time	0.000000	3.2
Pointing Roll	0.0	136.6499107481426			
SIM focus pos (mm)	-0.684267	-0.6828225247311905			
SIM defocus (mm)	0	0.8505141146731063			
SIM translation stage pos (mm)	-190.132523	250.466033080201			
SIM translation stage offset (mm)	0	-0.01005468664627074			
Observation start time	199032684.611597	199032683.58658			
Observation start date	2004-04-22T14:51:25	2004-04-22T14:51:23			
Observation end time	199044560.262121	199044559.2371			
Observation end date	2004-04-22T18:09:20	2004-04-22T18:09:19			
Read mode	TIMED	TIMED			

2.3 Aspect

2.4 Star Slots

2.5 FID Slots

A Summary

A.1 Status

V&V Scientist	Jen Lauer
V&V Date (YYYY-MM-DD)	2006.05.22
V&V Edition	1
V&V Disposition and Status	OK
V&V Charge Time	7.97119997

A.2 Comments